

## 32-Channel, 60-BAY Rackmount Network Video Recorder



NVR-6000

---

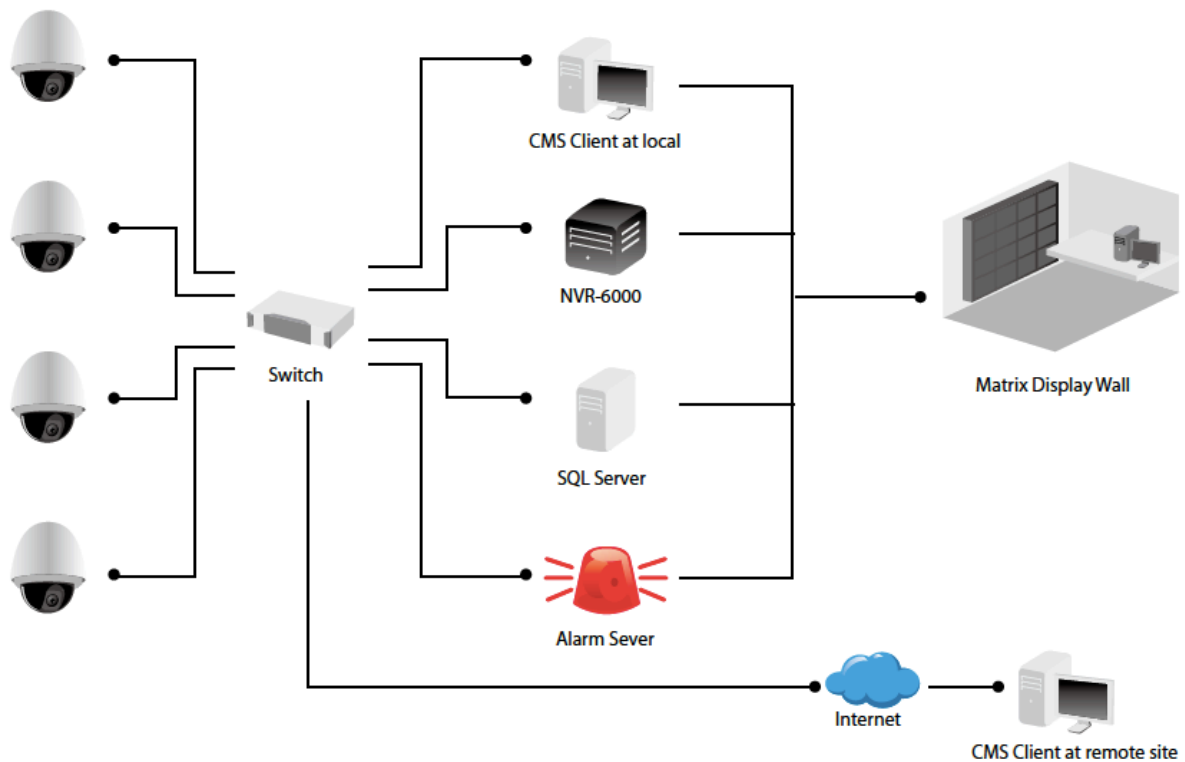
H/W Version: 1

The LevelOne NVR-6000 is a 32-Channel, 60-Bay, Rackmount Network Video Recorder System designed for large-scale and high-level enterprise projects. It has the most powerful alarm management system and can control unlimited matrices or viewing consoles in the centralized control room. NVR-6000 is comes with Management Software that supports Multi-Server, and Multi-Tier Client-Server architecture that can be expanded as your organization grows with no limits.

### Key Features

- Record and Monitor up to 32 Channels Simultaneously
  - 60-Bay Storage, support up to 240TB of video recording
  - Client-Server Architecture with built-in CMS Platform and CMS License for 32-CH
  - Support H.264/MJPEG/MPEG4 compression
  - Unlimited Matrix display wall
  - Unlimited layers of E-Map indicates Camera, and I/O devices
  - Real-time alarm management
  - Support integrations with external Alarm system such as Fire Alarm system via Networked (IP) I/O device
  - Advanced Log Management with Real-time Views and Log Search
-

## Diagram



## Technical Specification

### NVR: Recording

<b>Compatibility</b>	Compatible with <ul style="list-style-type: none"> <li>• LevelOne IP cameras</li> <li>• ONVIF certified IP cameras</li> <li>• IP cameras from 65+ other manufacturers (list available)</li> </ul>
<b>Hybrid Camera Management</b>	Support CCTV analog cameras integration via Video Encoder
<b>Recording</b>	<ul style="list-style-type: none"> <li>• Maximum Recording FPS: 60 fps</li> <li>• Continuous recording</li> <li>• Manual recording/snapshot</li> <li>• Record by schedule</li> <li>• Record by digital input or triggered event</li> <li>• Record moving event only (pre/post record buffer is up to 60 seconds)</li> </ul>
<b>Multi-Stream Recording</b>	<ul style="list-style-type: none"> <li>• Multi-Stream recording supported. User can select different stream profile by camera</li> </ul>

<b>Log Viewer</b>	<ul style="list-style-type: none"> <li>• System and User Events</li> <li>• Hardware Events</li> </ul>
<b>Digital Watermark</b>	Support Digital Watermark technology to prevent unauthorized recording modifications

**NVR: Playback**

<b>Simultaneous Playback</b>	16 Channels
<b>Image Enhancer</b>	Improve recorded video to get better image during playback and can be applied during export
<b>Search for Recordings</b>	Search for recordings based on date, time or specific video parameters
<b>Playback</b>	Controllable speed 1/16x~16x or frame by frame
<b>Video Clip Export</b>	Export single BMP/JPEG images to file or printer Export video in AVI

**NVR: IVA**

<b>Smart Guard</b>	Events triggered by general motion detection, missing/ foreign object detection, signal lost, camera occlusion, lose focus, external input or system status
<b>Motion Detection</b>	Camera-based motion detection with image exclude filter for image areas of no interest in specific period
<b>Smart Search</b>	Search unusual events with specific parameters from recorded video
<b>Counting Application</b>	Count how many times objects moving between different locations

**NVR: User Privilege and Management**

<b>User Privilege</b>	Support Multi-level User Privilege such as Administrator, Power User, and User
<b>Management</b>	Bundled with Management Software for Multi-NVR Management
<b>Remote Access</b>	Remote Access up to 10 clients

**NVR: Hardware**

<b>CPU</b>	1 x Intel Xeon Processor E5-2623 3.0GHz
<b>Chipset</b>	Intel C612
<b>System Memory</b>	8GB DDR3-ECC
<b>Front Storage Drives</b>	60 x 3.5" Drive Bay for Video Data (hot-swap)
<b>Rear Storage Drives</b>	2 x 2.5" Drive Bays for Operating System

<b>RAID</b>	LSI 9260-8i Hardware RAID support RAID 0,1,5,6,1+0
<b>Ethernet Port</b>	2 x RJ45
<b>Expansion Slot</b>	7 x PCIe slots (full height, full length)
	5 x USB 3.0 (Type A) Support up to 5Gbps I/O speed for external disk expansion
	iSCSI Support
<b>Power Supply</b>	3+1 hot-swap Redundant Power Supply
<b>Environmental</b>	Operating temperature: 0° - 35°C Storage temperature: -20° - 60°C System relative humidity: 5% - 95% (38°C) non-condensing
<b>Gross Weight</b>	35 kg. (77 lbs.)
<b>Mounting</b>	Standard 19" Rack Mount with 28" depth tool-less slide rail
<b>Certifications</b>	FCC, CE, RoHS

### Management Software: Live View and Matrix System

<b>Live Viewing</b>	Up to 64 concurrent cameras
<b>Grid Type</b>	Standard Screen – 1 / 4 / 9 / 12+1 / 16 / 25 / 36 / 49 / 64
	Wide Screen – 1+3 / 2+4 / 3+8 / 12 / 48
<b>Sequence View</b>	Yes
<b>Pop-up</b>	Shows the live video associated with alarms
<b>PTZ Panel</b>	Floating PTZ panel to manipulate cameras
<b>Joystick Support</b>	Control PTZ camera by Joystick via CMS Client

### Management Software: E-MAP

<b>Map Tree</b>	Unlimited level of site map
<b>Map Format</b>	BMP, GIF, JPEG, PNG and TIFF
<b>Surveillance Servers</b>	New / Edit / Delete / Disable or Enable
<b>Cameras</b>	New / Edit / Delete / Disable or Enable
<b>Navigation Operation</b>	Zoom In / Zoom Out / Drag & Drop
<b>Indicators</b>	Icon for <ul style="list-style-type: none"> <li>• Maps</li> <li>• Servers</li> <li>• Cameras</li> <li>• I/O devices and POS</li> </ul>
	Indicator icons support image format with alpha channel (TIFF)
	Display camera coverage
	Easy to find device on Map and Matrix View
<b>Instant Status Notification</b>	Shows corresponding icon nearby device icons to notify users of the events automatically
<b>Operation</b>	Open Last Alarm
	Open Live Video Window
	Open Instant Playback Window

	Backup Recorded Video
	View Server Status Report
	Search POS transaction data
<b>Pop-up Window</b>	Live popup window to use audio/talk functions
	Show live video with PTZ control panel
	Set stream profile to change video quality
	Snapshot and POS transaction overlay
	Remote playback for replay recorded video and audio

### Management Software: Alarm Management

<b>Alarm Type</b>	Video Signal Abnormal
	Digital Input Trigger (Normal / Emergency)
	POS Alarm Trigger
	Network Abnormal
	DVR / NVR Abnormal
	Motion / Missing / Foreign / Focus / Blocked
	Low Disk Space
	CPU temperature High
	Fan Speed Low
<b>Action when Alarmed</b>	Instant notifications on map and event list
	Go to specific map layer
	Play sounds
	Automatically show live video on popup window
	Automatically show live video on live matrix system
	Send SMS
	Send Email
	PTZ PRESET GO
	Signal digital output
<b>Viewing</b>	On screen display and instant recording.
<b>Pop-up</b>	Filter tools to survey existing alarm history
	Show a specific alarm with image preview
	Print a specific alarm with image preview
<b>Advanced Alarm Search</b>	Provides a comprehensive set of filters to search events by Alarm Name, Owner Name, Alarm Status, Alarm Priority and Date / Time period
<b>Alarm Database</b>	SQL Server 2005 Express as database to store all alarms
<b>Central Server</b>	Store the site map data by hierarchical structures
	Directly connect to surveillance server to get alarm notifications
	Provide TCP service for CMS client access through network
	Registers different time zones into UTC format

**Management Software: P/T/Z and I/O**

<b>PTZ Support</b>	Control of PTZ cameras and preset positions
<b>Preset Patrolling</b>	Multiple cameras patrolling
<b>Go to Preset on Event</b>	Yes
<b>Input/Output Control</b>	Support digital input/output control

**Management Software: Remote Playback**

	Up to 16 concurrent cameras
	1 / 4 / 9 / 16 Grid Type
	Export to image / video / print
	Smart Search by specific event
	<ul style="list-style-type: none"> <li>• General Motion</li> <li>• Missing Object</li> <li>• Foreign Object</li> <li>• Lose Focus</li> <li>• Camera Occlusion</li> </ul>

**Management Software: Remote Access**

<b>Remote Client Application</b>	Remote live Viewer/ Remote Playback
<b>PTZ Support</b>	Control of PTZ cameras
<b>Max # of Cameras Live View</b>	Up to 16 Channels from different servers
<b>Max # of Cameras Playback</b>	Up to 16 Channels
<b>Mobile Application</b>	Android and iOS application available
<b>DDNS</b>	Support DtDNS and DynDNS

**Management Software: User Group Authority**

<b>User Group Authority</b>	Alarm Management
	View Alarm Image
	View Live Video
	View Recorded Video
	PTZ Control (Priority Dispatch / Forward Priority Dispatch)
	Control Digital Output
	Remote Desktop
	View and Search POS transaction
	Audio / Talk
	Access Devices
<b>User Account</b>	Multiple user authentication levels with password restriction rules for unlimited users
<b>Account Properties</b>	User/Password
	Phone Number
	Email / Phone number

---

User Group  
Coverage  
Matrix View Groups

---

**Language**

---

**Support Language**

- Chinese (Simplified)
- Chinese (Traditional)
- Danish
- English
- Finnish
- French
- Hebrew
- Hungarian
- Japanese
- Korean
- Portuguese
- Russian
- Serbian
- Spanish
- Thai

---