

DataSheet_FBR-2000

2-WAN Broadband Router

LevelOne's FBR-2000 has dual WAN ports that allow you to provide network connectivity and ultimate redundancy. This device can simultaneously connect two broadband Internet connections of different type of WAN lines with your LAN. The FBR-2000's two WAN ports provide significantly increased bandwidth through our outbound Load Balancing feature. This equipment also provides network backup solution via its automatic fail-over function.

FBR-2000 offers firewall capabilities including NAT, SPI, DoS attack protection, access control by single or Group with different access authorization, packet filter and URL & Component blocking features. In addition, the embedded DES & 3DES IPsec and 256-bit AES encryption hardware accelerator ensures state-of-the-art VPN performance and robust security, with over 200 VPN tunnels permitted concurrently.

The dual WAN port can achieve outbound load balancing according to your requirement. You can set the algorithm by Round Robin, Weighted Round Robin, Traffic, Application, Session, Service and User to increase bandwidth. The MRTG & Policy statistics can dynamically detect traffic loading for you efficiently to arrange the available bandwidth.

The virtual server and dedicated DMZ port allow you to protect your server in the Intranet while providing specified services to the Internet user by public IP. The built-in DHCP server eliminates the need to configure each IP address manually. The system can be configured and monitored by IT manager with Web-based management interface, SNMP and E-mail alert. In order to keep up with future technology, software download and upgrades are easily done via network with our built-in TFTP.



FBR-2000

Key Features

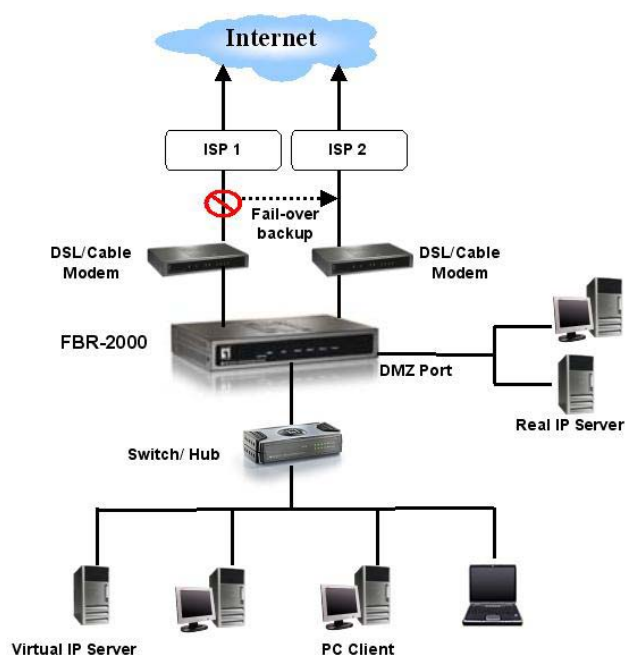
- 2 WAN ports for outbound load balancing and fail over connections
- Dedicate 1 DMZ connection
- Built-in IPsec and PPTP VPN (VPN Router)
- Smart NAT (Routing by Optimal Path)/ Multiple NAT
- Full Firewall Functions
- VPN Connection Tunnels (IPsec) : 250
- Hardware-based DES & 3DES IPsec and 256-bit AES encryption
- Built-in Web server for web-based configuration
- Remote software upgrade through TFTP

DataSheet_FBR-2000

Technical Specification

- **Network Interface**
 - 1 x 10/100Mbps TX RJ-45 LAN port Auto-MDIX
 - 2 x 10/100Mbps RJ-45 WAN port Auto-MDIX
 - 1 x 10/100Mbps DMZ port Auto-MDIX
- **CPU**
 - Intel® IXP425 400MHz
- **Memory**
 - 8MB Flash Memory
 - 64MB SDRAM
- **Firewall Security**
 - Transparent Mode
 - Smart NAT & Multiple NAT
 - Packet Filter
 - URL & Component Blocking
 - Access Control by single or group
 - Time Schedule Management
 - Stateful Packet Inspection (SPI)
 - DoS Attack detected item select
 - DoS Attack alert (Email & Log)
- **Network Attack Protections**
 - SYN/ ICMP/UDP Flood Threshold
 - Ping of Death
 - Tear Drop
 - Land Attack
- **VPN Features**
 - Site-to-Site/ Client-to-Site
 - 56-bit (DES) & 168-bit (3DEX)
 - PPTP Server/ Client & GRE/ IPSec
 - 256-bit AES
 - Concurrent VPN tunnels: over 200 Channels
 - Key management: manual and automated
 - Authentication: MD5 and SHA-1
 - Keep Alive
- **Performance**
 - Concurrent Sessions: 45,000
 - VPN Tunnels: 250
 - Policy: 360
- **Outbound Load Balancing Policy**
 - Round Robin
 - By Application/ Port/ Session/ User/ Traffic
 - Auto Mode
- **Log**
 - System/ Incoming/ Outgoing/ Intruder Log
- **Statistic**
 - Packet Statistic
 - MRTG
 - Accounting Report
- **Application**
 - DDNS & DNA Proxy
 - Virtual Server
 - Special Internet Application
 - Multi-Servers Load Balancing
 - Multi-DMZ host (Mapped IP)
 - Dial-on-Demand, Auto-Disconnect & Reconnect
 - Authentication w/ PAP & CHAP for PPPoE
- **Firmware Upgrade**
 - Web Interface
- **LEDs**
 - 1 x Power/ 1 x Status/ 1 x LAN/ 2 x WAN/ 1 x DMZ Port
- **Power Supply**
 - 5V/2.5A, external power
- **Temperature**
 - Operating: 0°C~60°C (°F ~ 122°F)
- **Humidity**
 - Operating: 5% ~ 95% (non-condensing)
- **Dimension**
 - 220mm(W) * 150mm(D) *5mm(H)
- **Weight**
 - 885 g
- **EMI and Safety**
 - FCC Part 15, CE

Product Diagram



Ordering Information

- FBR-2000:2-WAN Broadband Router