



OneSecure Video Management Software



FCS-9364

SPECIAL FEATURES



Up to 100 channels synchronized playback



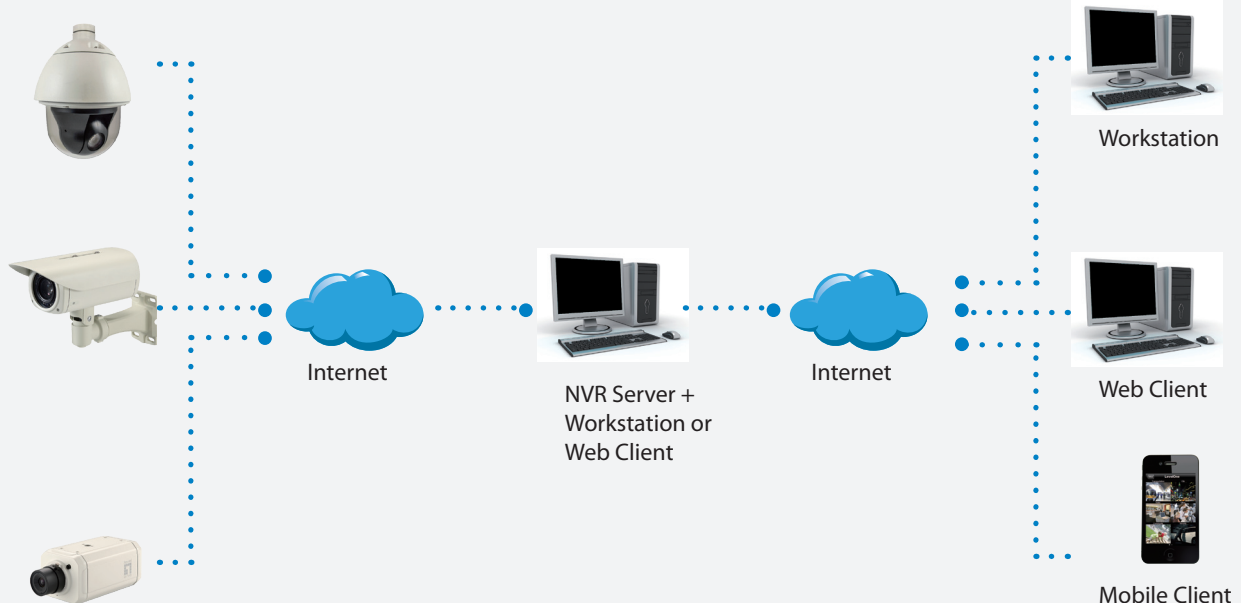
Instant playback in live view window

Key Features

- Free bundle 64 Channels. License fee is required to unlock additional channel - Maximum up to 100 Channels total.
- Recording up to 100 Channels
- Live view local up to 100 Channels, remote up to 100 Channels
- Synchronized playback local up to 100 Channels
- Export video with RAW and AVI formats
- Event trigger, response and notification
- Mobile Client, Web Client, Workstation
- Location-based management with eMap
- Smart search function
- Non-Level1 camera supported via licensed Camera Device Pack - license fee is required

Product Diagram

Camera Site



* Latest product information: <http://global.level1.com/>

Technical Specification

General		OneSecure	
Full Name	OneSecure Video Management Software		
Maximum Number of Clients	Unlimited, Concurrent User Number by PC performances		
Maximum Number of Cameras	100		
Free License	64 channels		
Compression	H.265, H.264, MPEG-4, MJPEG		
Live View			
Display Layout Mode	1, 4, 5, 6, 8, 9, 10, 12, 16, 18, 24, 25, 35, 36, 48, 49, 64		
View Manager	An interface to define display layouts and the pre-set cameras within layout in the public or private view		
View Patrol	Automatic switch between different views or devices		
View Panel	Contains the list of pre-defined views for quick launch		
Device Panel	Drag and drop video source from device panel into display layout; display camera status		
Digital Zoom	Zoom in/out digitally by mouse scroll wheel or by zoom control buttons		
Manual Recording / Snapshot	Instant recording upon mouse click / Instant snapshot upon mouse click or hot key		
Event Panel	Display event status upon alarm or upon connection loss or recovery between server and client or when the allocated disk space is full		
Two-way Audio	Audio sound from and to all the audio supported devices; audio broadcast to multiple devices at the same time		
Dual Stream Management	Live view of stream 1 or stream 2 of dual stream devices		
Instant Playback	Instant playback in live view window		
e-Map			
Layout	Area maps with camera icons, small live view windows; hyperlinked		
Setup	e-Map image upload; camera positioning; vision angle and pointed direction of camera; view positioning; source positioning		
PTZ Mode	Mouse PTZ mode to control e-Map video streams		
PTZ			
Control	Pan, tilt and zoom controls; speed control; both buttons and overlay controls		
Preset Points and Tours	Create preset points; create auto tours between preset points		
Number of Preset Points	32		
Joystick	USB based joystick supported		
Support Protocol	Auto-detect camera's PTZ protocol. Available protocols: Pelco-P, Pelco-D, Dynacolor, Visca		
Recording			
Scheduled Recording	Record video with user defined schedule		
Event Recording	Record video when the alarm event is triggered, including the pre-event buffered video clip		
Speed Up	Different recording frame rate settings for non-event and triggered event		
Manual Recording	Instant recording upon mouse click		
Pre-Event Recording	User-defined time period to record before event occurs. The maximum buffer is 5 seconds		
Post-Event Recording	User-defined time period to record after event occurs. The maximum buffer is 300 seconds		
Dual Stream Management	Recording of stream 1 or stream 2 of dual stream devices		
Search & Playback			
Recording Search	Search video recordings by time, event, channel and listed as clickable thumbnails for full-size view and snapshot download		
Playback Control	Continuous forward and backward playback with speeds 1x/2x/4x/8x or frame-by-frame; pause; stop		
Synchronized Playback	100 channels		
Manual Snapshot	Instant snapshot from playback upon mouse click		
Digital Zoom	Zoom in/out digitally by PiP (Picture-in-Picture)		
Video Export	Export video clips in AVI or RAW format; text overlay supported		
Event Management			
Event Trigger	Video motion detection; Passive IR sensor; External device through digital input; Video loss and recovery; Network loss and recovery; Server loss and recovery; Disk full; Disk not found		
Event Response	Record video; Pop-up window with live video; Switch to hotspot window; Play beep sound; Activate external device through digital output; Upload snapshot to FTP server; Execute system command to activate other programs; E-mail notification with snapshots; Command a PTZ device to go to a preset point		
Manual Event	Manually activate external devices through digital output via live view monitor		
Event Handling	Define the schedule of event manager		
System			
Permission Control	Unlimited number of users, Active Directory, Customizable permissions for user groups		
Language	Multi-language support		
Language Import/Export	Possibility to import or export language packs for convenient local language management		
Customizable User Interface	Define the layout of user interface for live view and playback		
Quick Setup	Configure basic settings of NVR		
Remote Access			
PC Client Program	User interface program (Workstation) with live view, PTZ, playback, e-Map, event management, setup		
PC Web Browser	Microsoft Internet Explorer with live view, PTZ, playback, e-Map, event management, setup		
Mobile Client Program	Mobile device application (Active Mobile Client) supports live view, PTZ control, event or time based search and playback Supported devices: iPhone, iPad, iTouch and Android device		
Display Mode	Live Layout	Minimum	Recommended
Server PC with Local Client	1-16	Intel Core 2 Quad 2.4 GHz, 4GB RAM	Intel i5 2.4 GHz, 4GB RAM
	17-100	Intel i5 2.4 GHz, 4GB RAM	Intel i7-920 2.67 GHz, 4GB RAM
Server PC without Local Client	0	Intel Core 2 Quad 2.4 GHz, 4GB RAM	Intel i5 2.4 GHz, 4GB RAM
Remote Client PC	1-16	Intel Core 2 Quad 2.4 GHz, 4GB RAM	Intel i5 2.4 GHz, 4GB RAM
	17-64	Intel i5 2.4 GHz, 4GB RAM	Intel i7-920 2.67 GHz, 4GB RAM
PC Operating System	Windows 7, Windows 8, Windows Server 2012		
PC Web Browser	Internet Explorer 8, Internet Explorer 9, Internet Explorer 10		
Integration			
Unified Solution	Fully compatible with LevelOne cameras, encoders and CMS		
ISV CMS Integration	Software Development Kit (SDK) available		

* These specifications are based on following camera settings: Single stream mode: 1280x1024, 3Mbps, 18fps, MPEG-4

Dual stream mode:

Stream 1 : 1280x1024, 3Mbps, 18fps, H.264, H.265

Stream 2 : 640x480, High Quality, 18fps, MJPEG

For more details about system requirements, please refer to Project Planner on <http://global.level1.com/>

Order Information

FCS-9364: OneSecure Video Management

License Order Code:

FCS-9364

For 65 to 100 channels

FCS-9364T

Non-LevelOne brand camera,Third-part camera (Onvif)