

## 4-bay NAS Tower w/ SATA Interface

**Reliable Hardware Structure**--LevelOne's FNS-7000B is designed for premier NAS usage featuring ease of installation and lower purchase cost. With its tower form, powered by an VIA C3 800MHz CPU, the FNS-7000B delivers an enterprise-level NAS solution. Flash memory is plug-in type for easy maintenance, should flash failed, and for flexible to upgrade memory when your business expands. System status is easily and clearly visible through LEDs and LCD panel indicator. You can check current system situations including power, error, network connection and remote duplication status. With its UPS and optional hot-swappable power redundant unit, FNS-7000B ensures continuous power and system functionality.

**Versatile Backup Functions**—The use of SATA improves fault isolation and provides scalable performance. FNS-7000B supports 4 SATA HDD with hot swap functions that provide storage capacities of up to 2TB. It also supports multiple disk-array technologies for backend storage, including JBOD, RAID 0, RAID 1 RAID 5 and Hot Spare. Moreover, this device also provides a mechanism to burn offline data to CD or DVD through USB interface, and can be restored from the disks to NAS folders.

**Extensive Software Support**—FNS-7000B provides extensive backup software and management tools. Remote replication of FNS-7000B provides a secure mechanism for reliable and instant data backup. It supports scheduled automatic file backup to ensure ease of management, incremental backup according to the data being changed, synchronization backup to ensure data consistency and block level remote replication to enhance backup efficiency. FNS-7000B also provides a Web-based management interface which allows more simplified and user-friendly operations.

**Dual Giga-LAN Interfaces** --Using dual Giga-LAN architecture provides the fail over back up , multi-IP setting and traffic load balance functions. Our FNS-7000B is immediately able to meet the requirements of increasing demands for high performance and storage capacity in such technology-sensitive business applications as instant file sharing and multimedia applications.



**FNS-7000B**

### Related Products



**FNS-5000**  
2-bay 10/100 Mbps Rack-mounted NAS



**GNS-8000B**  
4-bay Tower NAS w/2 Gigabit Ethernet

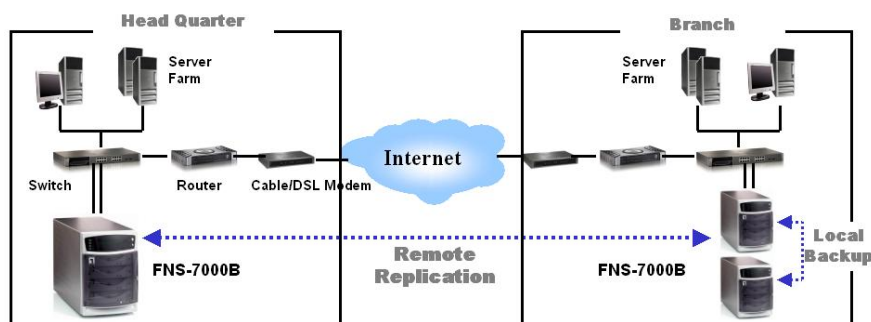
## Key Features

- Supports 4 SATA large-size hard disks and hot swap function
- Dual Giga-LAN structure for data traffic load balance
- Supports Backup Tape drive and UPS
- Supports USB DVD/CD burner backup/restore
- RAID technology for data protection
- Block level remote replication to enhance backup function
- High brightness LCD panel and LEDs for visible system working status
- Supports SNMP management, E-mail alerts and audio buzzer
- Supports Unicode and Multiple-Languages
- Supports multiple operating systems and file protocols
- Easy configuration and quick launch services
- Web-based management GUI for remote distribution

## Technical Specification

- **Processor**  
VIA C3 800MHz CPU
- **Flash Memory**  
32 Mbytes
- **DRAM**  
1 DDR DIMM sockets, Up to 512Mbytes DDR SDRAM
- **Drive Interface**  
4 x 3.5" SATA HDD, 2TB Maximum
- **Ports**  
2 x 10/100/1000Mbps FJ-45 Ethernet ports  
2 x USB2.0: Supports UPS Power Management and CD/DVD Burning/Restore
- **Network Transport Protocols**  
TCP/IP, IPX, NetBEUI, Apple Talk, NAT
- **Network File Protocols**  
Microsoft Networks (CIFS/SMB)  
Apple (AFP)  
UNIX (NFS)  
Internet (Web Browser)  
File Transfer Protocol (FTP)  
Novell Netware (NCP)
- **Network Security**  
Microsoft AD Authentication
- **Network Client**  
Microsoft Windows 95/ 98/ ME/ NT4.0/ 2000/ 2003/XP  
Macintosh System 7.5+  
Linux Fedora RX3, Redhat 7.3/8.0/9.0
- **Setup and Configuration**  
Web-Based GUI for system administration  
Quick Install Wizard  
Save and restore configuration  
LCD Panel Configuration  
Reset Button
- **Network Management**  
Dynamic IP Address, Static IP Address, DHCP Service  
Load Balancing, Fail-over, Multi-IP Setting
- **Disk Configuration**  
JBOD, RAID 0,1,5, Single Disk
- **Disk Management**  
Hard Disk Failure Detection  
Disk Detect/ Auto Recovery  
Disk Used Status Management
- **File System Management**  
Journaling File System  
Web File Manager for Remote Access  
Over 2GB Files Support  
Unicode Support  
Microsoft ACL Support  
Users quota setting
- **System Management**  
Web-Based Administration  
SNMP  
Disk Failure Analysis  
E-mail Alert/ Alarm Buzzer  
LCD Panel display  
LED Display  
System Software upgrade  
Multi-Users account setting
- **Backup Management**  
Supports Client Backup Software  
Built-in Tape Backup Software  
Supports BakBone NetVault Backup Agent  
Virtual Tape Library  
Schedule to remote replication backup  
Support most popular network backup application  
Block level remote replication  
CD/DVD Burning/Restore (Support CD-R/RW, DVDR/-R/+RW/-RW/-R Double layer)
- **Language Supports**  
English, Japanese, Simplify/Traditional Chinese, French, German
- **LEDs**  
Power, Error, Network Status, HDD
- **Power management**  
1 x ATX Power Supply 150W  
Optional Redundant ATX Power Supply  
UPS Support: SNMP, USB
- **Temperature**  
Operating: 0°C ~40
- **Humidity**  
Operating: 0% ~ 8%
- **Dimension**  
380mm(L) \* 168mm(W) \* 240mm(H)
- **Weight**  
8.5Kg
- **EMI and Safety**  
FCC, CE

## Product Diagram



## Ordering Information

- FNS-7000B: 4-bay NAS Tower w/ SATA Interface