

24-Port 10/100Mbps Fast Ethernet Switch

Product Overview

The LevelOne FSW-2410 Fast Ethernet Switch provides 24 copper ports for an easy to deploy and cost-effective LAN network at the office.

Cost-Effective and Easy to Deploy Network Switch

The LevelOne FSW-2410 provides 24 RJ-45 ports for connecting to or setting up a Fast Ethernet LAN network. Half- and full-duplex capability is supported providing bi-directional transmission that boosts bandwidth up to 200Mbps.

Operating at maximum packet filtering and forwarding rate, the FSW-2410 supports store-and-forward switching architecture. It also offers 1MB buffer memory.

Reliable High-Speed Data Transmission

The FSW-2410 is compliant with IEEE 802.3 10-Base-T, 802.3u 100Base-TX standards for data transfers of up to 200Mbps, providing adequate flow control between communicating devices.

The FSW-2410 is a highly efficient network switch for a reliable and stable network.



FSW-2410TX

Key Features

- 24-port Fast Ethernet Switch
- Complies with IEEE802.3 and IEEE802.3u
- Supports Auto-negotiation and Auto-MDI/MDI-X
- Full/Half-duplex for each port
- 160KB data buffering
- Address table up to 8K
- Wire speed reception and transmission
- Operating at maximum packet filtering and forwarding rate
- Supports store-and-forward packet switching architecture
- Comprehensive LED indications for port status indication
- Standard 19-inch rack-mount design

Technical Specification

Device Specifications

Standard Compliance

- IEEE 802.3 10Base-T
- IEEE 802.3u 100Base-TX

Network Interface

- 24x RJ45 auto-negotiation/auto MDI-X ports

Protocol

- CSMA/CD

Topology

- Star

Network Data Transfer Rate

- Ethernet: 10Mbps, 20Mbps (full-duplex)
- Fast Ethernet: 100Mbps, 200Mbps (full-duplex)

Internal Specifications

Forwarding Method

- Store and Forward

MAC Address Size

- 8K MAC address entries per device

Buffer Memory Size

- 160KB per device

Physical Specifications

Status LEDs

- Power
- 10/100Mbps Link/Activity
- Speed

Temperature

- Operation Temperature: 0°C ~ 50°C
- Storage Temperature: -10°C ~ 70°C

Humidity

- Operation Humidity: 10% ~ 90% RH
- Storage Humidity: 5% ~ 90% RH

Power

- 100~240V AC 50/60Hz Internal Power Supply

Power Consumption

- 6.4W

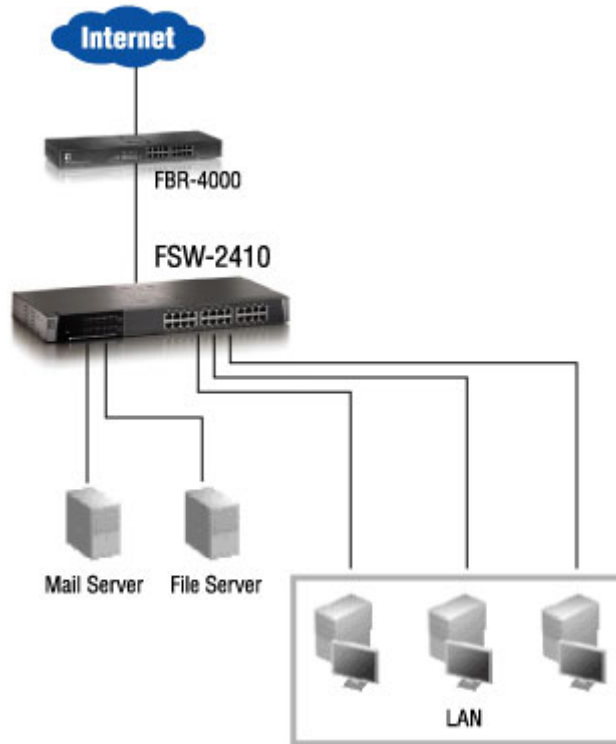
Dimensions

- 440mm x 44mm x 140mm

Certifications

- FCC Class
- CE mark Class
- VCCI-A

Product Diagram



Order Information

FSW-2410TX: 24-Port 10-100Mbps Fast Ethernet Switch

For more information, please contact your LevelOne representative, or visit www.level1.com
All technical specifications are subject to change without notice.
All mentioned brand names are registered trademarks and property of their owners

www.level1.com