



4G + 1mini GBIC Switch

LevelOne's GSW-0505 is an ideal solution for solving traffic block at the core of the network. This switch is equipped with 4 Gigabit Ethernet ports plus 1 mini GBIC port and reaching 10Gbps backplane bandwidth thus creating high-speed backbone data transmissions. With its Gigabit Technology, this GSW-0505 is able to handle the multi-media, video streaming or real-time broadcast applications through your workgroup. The mini GBIC port allow users to extend the network connection distance or to integrate other advanced solutions in the future without further investment. Moreover, this switch will also fit into any enterprise level network to act as an exit to the backbone switch.

GSW-0505 combines dynamic memory allocation with a store-and-forward switching architecture to ensure that the buffer is effectively allocated for each port. It also controls the data flow between transmit and receive nodes to guarantee against all possible packet loss. All ports support Auto-MDIX allowing uplinking to another switch directly without cable selection hassle.

This unit is small and desktop-sized specially designed to fit in space-limited locations. Users can immediately use any of the features of this product simply by attaching the cables and turning on the power to improve your network backbone performance. For instant error detection, the switch is equipped with a full range of LEDs to help you monitor and troubleshoot problems on your network.



GSW-0505

Key Features

- 4-port 10/100/1000 Mbps Gigabit plus 1-port mini GBIC Switch
- Complies with IEEE 802.3, 802.3u, 802.3ab and 802.3x
- Supports Auto-negotiation for speed and duplex modes for each port
- Up to 10Gbps Backplane bandwidth
- Supports Auto-MDI/MDI-X for each port
- Non-blocking switching
- Supports 4K absolute MAC addresses
- Supports 1Mbits RAM for data buffering
- Store-and-Forward switching architecture
- Front-panel diagnostic LEDs
- IEEE 802.3x flow control for full-duplex
- Back pressure flow control for half-duplex

Datasheet_GSW-0505

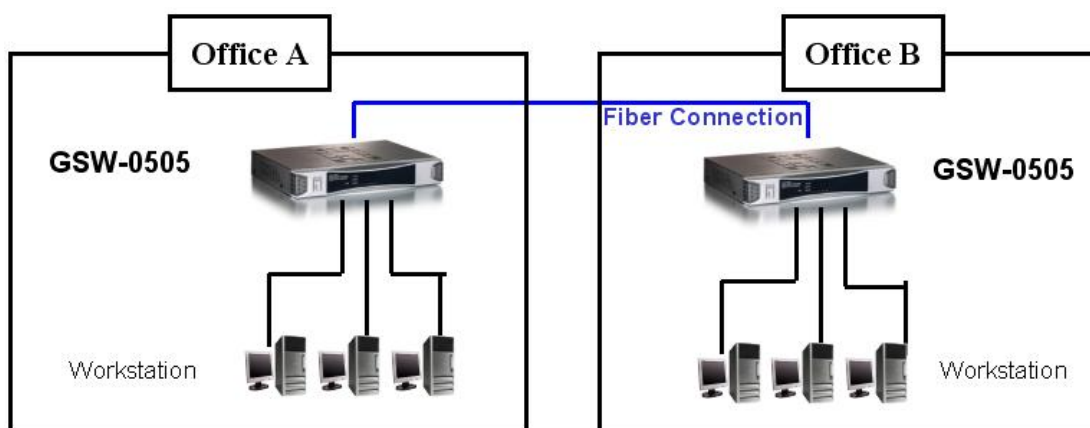


one world_one brand_one level_

Technical Specification

- **Standards Compliance**
 - IEEE 802.3: 10 BASE-T Ethernet
 - IEEE 802.3u: 100 BASE-TX Fast Ethernet
 - IEEE 802.3ab: Gigabit Ethernet
 - IEEE 802.3x Flow Control for Full-Duplex
- **Ports**
 - 4 x RJ-45 10/100/1000 Mbps ports
 - 1 x SFP mini GBIC port
- **Protocol**
 - CSMA/CD
- **Switching Method**
 - Store-and-Forward switching architecture
- **Transfer Rate**
 - 14,880 pps for 10Mbps
 - 148,800 pps for 100Mbps
 - 1,488,000 pps for 1000Mbps
- **Cabling**
 - Ethernet: 2-pair UTP/STP Cat.3,4,5, EIA/TIA-568 100-ohm
 - Fast Ethernet: 2-pair UTP/STP Cat. 5, EIA/TIA-568 100-ohm
 - Gigabit Ethernet: 4-pair UTP/STP Cat.5, EIA/TIA-568 100-ohm
 - 1000Base-SX: 62.5/125 μ m multi-mode fiber optic cable
 - 50/125 μ m multi-mode fiber optic cable
 - 1000Base-LX: 9/125 μ m single-mode fiber optic cable
- **Backplane**
 - 10Gbps
- **MAC Address Table**
 - 4K entries per device
- **Buffer**
 - 1Mbits per device
- **LEDs**
 - Per Device: Power
 - Gigabit copper, per Port: 100/1000,Link/Act, Full-Duplex/Collision
 - Mini GBIC, per port: Link/ Act
- **Power Supply**
 - External power DC 12V/ 1.3A
- **Power Consumption**
 - 7.5 Watts (max)
- **Temperature**
 - Operating: 0°C ~45°C (32°F to 113°F)
- **Humidity**
 - Operating: 10% ~ 90% Non-Condensing
- **Dimension**
 - 165mm(L) * 100mm(W) * 32.5mm(H)
- **Weight**
 - 450 g
- **EMI and Safety**
 - FCC class A, CE

Product Diagram



Ordering Information

- GSW-0505: 4G +1 mini GBIC Switch
- GVT-0300: SFT Transceiver for mini GBIC module (550m)
- GVT-0301: SFT Transceiver for mini GBIC module (10km)
- GVT-0302: SFT Transceiver for mini GBIC module (70km)