



8-port Gigabit Switch

LevelOne's GSW-0803T Gigabit Ethernet Switch is an ideal solution for solving traffic block at the core of the network. It is equipped with 8 Gigabit Ethernet ports and reaching 10Gbps backplane bandwidth thus creating high-speed backbone data transmissions. With its Gigabit Technology, this GSW-0803T is able to handle the multi-media, video streaming or real-time broadcast applications through your workgroup. Moreover, this switch will also fit into any enterprise level network to act as an exit to the backbone switch.

This GSW-0803T combines dynamic memory allocation with a store-and-forward switching architecture to ensure that the buffer is effectively allocated for each port. It also controls the data flow between transmit and receive nodes to guarantee against all possible packet loss. All ports support Auto-MDIX allowing uplinking to another switch directly without cable selection hassle.

This unit is small and desktop-sized specially designed to fit in space-limited locations. Users can immediately use any of the features of this product simply by attaching the cables and turning on the power to improve your network backbone performance. For instant error detection, the switch is equipped with a full range of LEDs to help you monitor and troubleshoot problems on your network.



GSW-0803T

Key Features

- 8-port 10/100/1000 Mbps Gigabit Switch
- Complies with IEEE 802.3, 802.3u, 802.3ab and 802.3x
- Supports Auto-negotiation for speed and duplex modes for each port
- Up to 16Gbps Backplane bandwidth
- Supports Auto-MDI/MDI-X for each port
- Supports 4K absolute MAC addresses
- Supports 1Mbits RAM for data buffering
- Store-and-Forward switching architecture
- Front-panel diagnostic LEDs
- IEEE 802.3x flow control for full-duplex
- Back pressure flow control for half-duplex

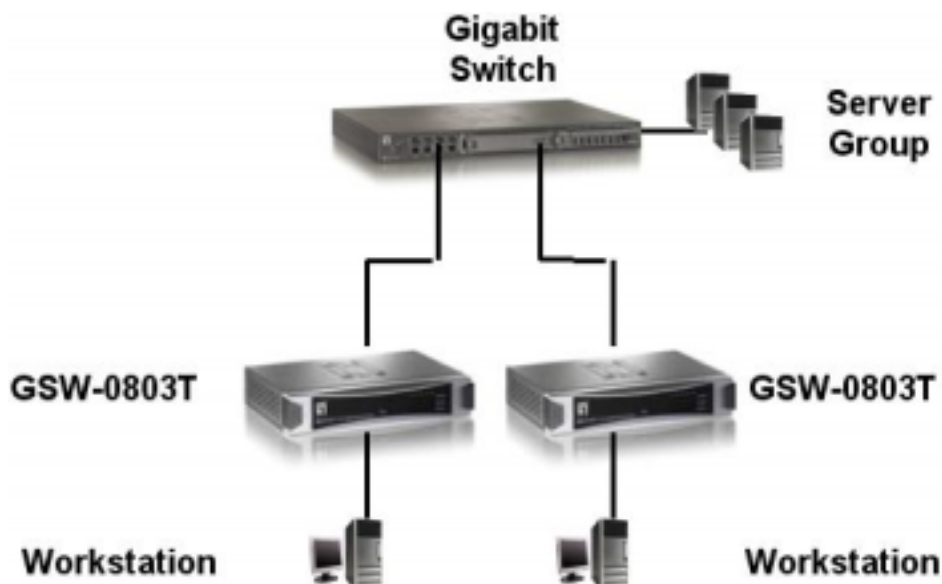
Datasheet_GSW-0803T



Technical Specification

- **Standards Compliance**
 - IEEE 802.3: 10 BASE-T
 - IEEE 802.3u: 100 BASE-TX
 - IEEE 802.3ab: Gigabit Ethernet
 - IEEE 802.3x Flow Control for Full-Duplex
- **Ports**
 - 8 x RJ-45 10/100/1000 Mbps ports
- **Protocol**
 - CSMA/CD
- **Switching Method**
 - Store-and-Forward switching architecture
- **Transfer Rate**
 - 14,880 pps for 10Mbps
 - 148,800 pps for 100Mbps
 - 1,488,000 pps for 1000Mbps
- **Cabling**
 - Ethernet: 2-pair UTP/STP Cat.3,4,5, EIA/TIA-568 100-ohm
 - Fast Ethernet: 2-pair UTP/STP Cat. 5, EIA/TIA-568 100-ohm
 - Gigabit Ethernet: 4-pair UTP/STP Cat.5, EIA/TIA-568 100-ohm
- **Backplane**
 - 16Gbps
- **MAC Address Table**
 - 4K entries per device
- **Buffer**
 - 1Mbits per device
- **LEDs**
 - Per Device: Power
 - Per Port: 100/1000, Link/Act, Full-Duplex/Collision
- **Power Supply**
 - External power DC12V/1.3A
- **Power Consumption**
 - 13.2 Watts (max)
- **Temperature**
 - Operating: 0°C ~45°C (32 to 113)
- **Humidity**
 - Operating: 10% ~ 90% Non-Condensing
- **Dimension**
 - 165mm(L) * 100mm(W) * 32.5mm(H)
- **EMI and Safety**
 - FCC class A, CE

Product Diagram



Ordering Information

- GSW-0803T: 8-port Gigabit Switch

