



## 8-port 1000T + 1-port mini GBIC Smart Switch

The GSW-0840T Gigabit Ethernet Smart Switch is a multi-speed, versatile networking device that combines Gigabit copper and mini GBIC ports in a single device. The GSW-0840T provides a port-mirroring function and asymmetric flow-control support for full-duplex operation, while automatically negotiating the best possible bandwidth when connecting to other networks and devices. The additional mini-GBIC interface allows you to extend the network connection distance or to integrate other advanced solutions in the future without further investment.

**LevelOne's** GSW-0840T smart switch is "Plug-&-Play". It does not require software configuration. Users can immediately use any of the features of this product simply by attaching the cables and turning on the power. For instant error detection, the switch is equipped with a full range of LEDs to help you monitor and troubleshoot problems on your network.

The slim and unique design fits easily in any space-limited location. Users can locate the switch on the desktop. With the accessory kits, the switch can either be stacked or mounted to the rack to save space. The GSW-0840T gigabit smart switch provides an ideal solution for small businesses that demand a reliable network to interface file servers with bandwidth-starving workgroups, departments, and offices.



**GSW-0840T**

### Key Features

- 8 Gigabit copper ports and 1 mini-GBIC port
- All copper ports are capable of Half-and-Full-Duplex mode and auto-negotiation function
- 16 Gbps back-plane
- Supports 9.5KB Jumbo packet Supports port-based VLAN and 802.1Q tag VLAN
- LEDs on front panel for easy access and real time viewing status of switch
- 11" size for desktop, internal power
- Accessory for stack up or rack-mount



Rack-mountable with Accessory



Stackable with Accessory

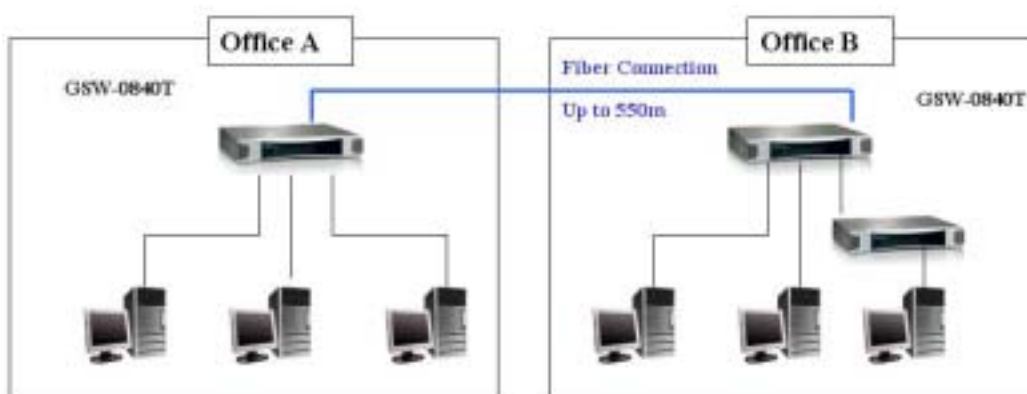
# Datasheet\_GSW-0840T v.2



## Technical Specification

- **Standards Compliance**  
IEEE 802.3/ IEEE 802.3u/ IEEE 802.3ab/ IEEE 802.3z  
IEEE 802.3x Flow Control
- **Ports**  
8 x 10/100/1000 Base-T  
1 x mini GBIC (3.3V mini-GBIC slot and shared with RJ-45 port #1)
- **Forwarding Rate**  
1488000 packets/sec per port @ 1000Mbps (max)  
148800 packets/sec per port @ 100Mbps (max)  
14880 packets/sec per port @ 10Mbps (max)
- **MAC Address Table**  
4K entries with Auto learning function
- **RAM Buffer**  
1.5MB
- **Jumbo Frame**  
9.5KB
- **VLAN**  
4K IEEE 802.1Q Tagged VLAN  
Port-based VLAN up to 8 groups
- **Port Trunk**  
1 trunk group and trunk member up to 4
- **QoS**  
Port based priority  
802.1p/TOS priority tag
- **Management**  
Console port interface
- **LEDs**  
Per port: 100/1000(Orange/Green); Link/Act(Green); Full duplex/Collision (Orange)  
Per Unit: Power  
Mini-GBIC: Link/Act (Green)
- **Power Input**  
90~240VAC,50/60Hz Internal universal power supply
- **Power Consumption**  
22 Watts (max)
- **Temperature**  
Operating: 0 ~45 (32 to 113 )  
Storage: -10 ~70
- **Humidity**  
Operating: 10% ~ 90% (Non-condensing)
- **Dimension**  
270mm(W) \* 187mm(D) \* 43mm(H)
- **EMI and Safety**  
FCC, CE

## Product Diagram



GSW-0840T Network Diagram

## Ordering Information

- GSW-0840T v2 : 8-port 1000T + 1-port mini GBIC Smart Switch

