

# 16-Port 10/100/1000 Mbps w/ SFP



GSW-1621

H/W Version: 2

### Total Gigabit Ethernet Solution

LevelOne's GSW-1621 Gigabit switch provides 16 Gigabit ports for lightning fast data transfer across your network. Send large files in seconds for a notable improvement in work productivity and efficiency. In addition, GSW-1621 supports fiber connectivity with the equipped SFP ports for obtaining long-distance communication. The store-and-forward architecture filters errors and forwards packets in a non-blocking environment. Flow control ensures accurate data transmission and the 802.3x and backpressure flow control mechanisms provide flexibility for full and half duplex modes.

### Save Power With LevelOne Green Technology

Active Link Detection: A LevelOne Green device can tell if there is activity on each individual LAN port. If a

16-port switch only has 6 active devices connected to it, power is saved because no traffic is routed to the 2 inactive ports.

Cable Length Detection: The switch is able to detect the distance of the connected device and adjusts its power accordingly. For example, if you have a LevelOne Green switch a computer connected to a 10-meter cable will consume less power than a computer connected to a 100-meter cable.

Sleep Mode: The device will enter sleep/standby mode when the connected devices are powered down and no active links are detected. This helps save energy consumption during extended periods of network inactivity, such as nights, weekends and holidays.



1. LEDs
2. SFP Slot
3. 10/100/1000 Mbps
4. Internal power socket

### Key Features

- Complies with IEEE 802.3, 802.3u, 802.3ab and 802.3z
- 16 x 10/100/1000 Mbps RJ-45 Nway ports
- 1 x SFP for optional fiber optic communication
- Supports Auto-negotiation for speed and duplex modes for each port
- Up to 32 Gbps Backplane bandwidth
- Supports 8K absolute MAC addresses
- Supports 340K Bytes RAM for data buffering
- Supports 9K bytes Jumbo frame
- Supports back-pressure (half duplex) and flow control (IEEE 802.3x)
- Internal power adapter
- Save up to 46% power compare to non Green Switch with similiar functions

### Works well with



**GVT-0300**  
Mini GBIC SFP transceiver SX  
Multi-Mode(550m)



**GNC-0105T**  
Gigabit Ethernet 32-bit PCI  
Card

## Technical Specifications

### Standard Compliance

#### Compliant

IEEE 802.3: 10BASE-T

IEEE 802.3u: 100BASE-TX

IEEE 802.3z/ab: Gigabit Ethernet

IEEE 802.3x Flow Control for Full-Duplex

### Network Interface

#### Ports

16 x 10/100/1000 Mbps RJ-45 ports

1 x SFP port

#### Protocol

CSMA/CD

#### Switching Method

Store-and-Forward switching architecture

#### Transfer Rate

14,880 pps for 10 Mbps

148,800 pps for 100 Mbps

1,488,000 pps for 1000 Mbps

#### Cabling

Ethernet: 2-pair UTP/STP Cat.3,4,5, EIA/TIA-568 100-ohm

Fast Ethernet: 2-pair UTP/STP Cat. 5, EIA/TIA-568 100-ohm

Gigabit Ethernet: 4-pair UTP/STP Cat.5, EIA/TIA-568 100-ohm

#### Backplane

32 Gbps

#### MAC Address Table

8K entries per device

#### Buffer

340KBytes per device

### Physical Specifications

#### LEDs

Per Device: Power

Per Port: 10/100Mbps Link/ACT (green); 100/1000, Link/ACT

#### Power Supply

100~240VAC/50~60Hz universal input; Internal power Supply

#### Power Consumption

14.4 Watts (max)

#### Temperature

Operating: 0°C ~40°C

#### Humidity

Operating: 10% ~ 90% Non-Condensing

#### Dimension

270mm(W) \* 187mm(H) \* 43mm(D)

#### EMI and Safety

FCC class A, CE, VCCI Class A

#### LevelOne Green

#### Power Consumption with 16 x 100 meters Cable Connected

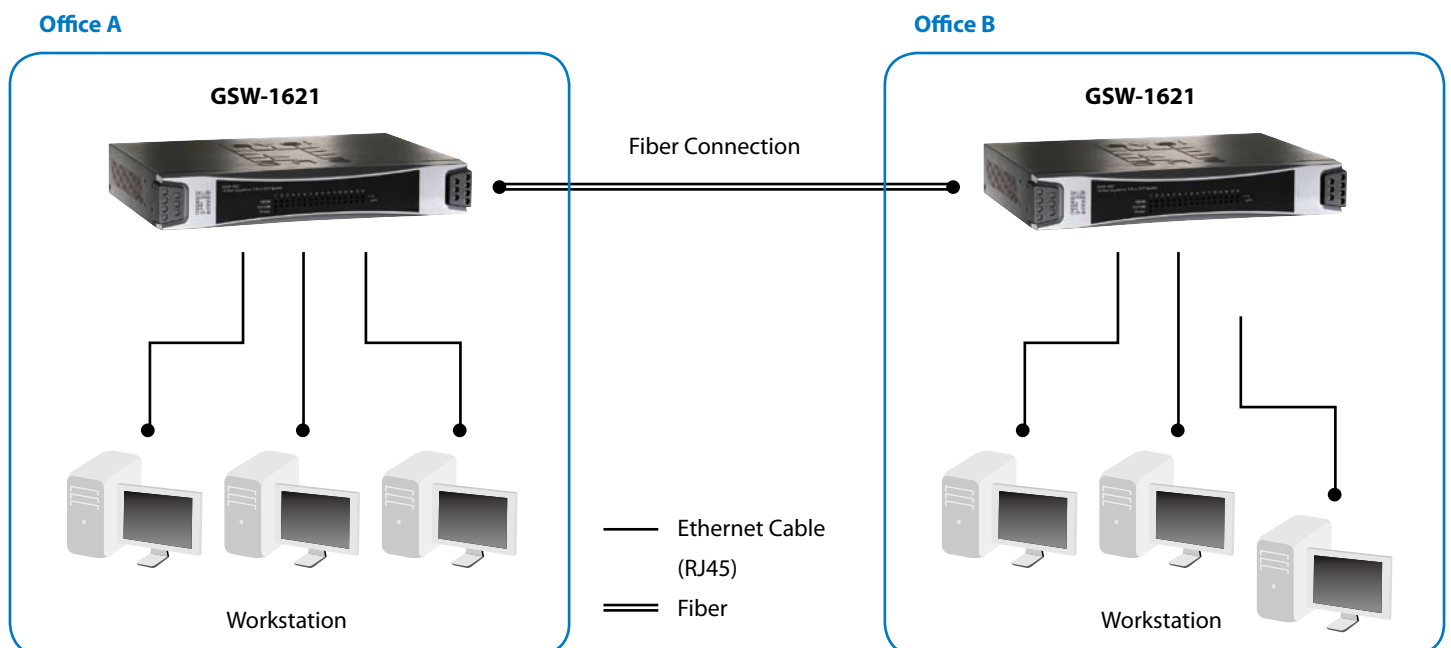
13.95W

#### GSW-1621 Base Power Consumption

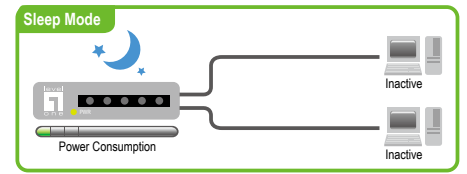
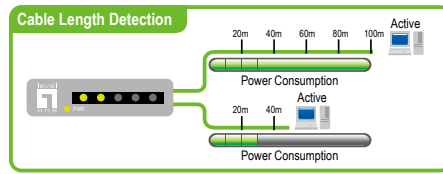
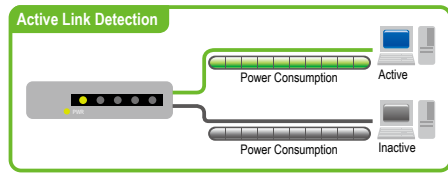
(No Cables are Connected)

2.8W

## Product Diagram



## Power Saving by



## Order Information

**GSW-1621:** 16-Port 10/100/1000/Mbps w/ SFP

## Package Contents

GSW-1621  
Power Cord  
Rack-Mount Brackets  
Stackable Kit  
CD Manual

## Optional Accessories



**GVT-0300**  
Mini GBIC SFP transceiver, SX  
Multi-Mode (550m)



**GVT-0301**  
Mini GBIC SFP transceiver, LX  
Single-Mode (10km)



**GVT-0302**  
Mini GBIC SFP transceiver,  
ZX Single-Mode (80km)