

Datasheet_GSW-1652T

19" 16-port Gigabit Switch

LevelOne's new Gigabit Ethernet Switch, GSW-1652T is equipped with 16 10/100/1000 Mbps-port Ethernet connections. Each RJ-45 port can auto negotiate for the best possible performance running either in full or half duplex mode. Auto-MDIX is also supported on all ports which allows uplinking to another switch-free cross-over or straight cable selection. Half-and full-duplex flow control prevents packets from being dropped under heavy loading. The GSW-1652T supports Store-and-forward switching operation to ensure that only whole packets with a good CRC are passed to the destination.

GSW-1652T gigabit switch is "Plug-&-Play". It does not require software configuration. Users can immediately use any of the features of this product simply by attaching the cables and turning on the power. For instant error detection, the switch is equipped with a full range of LEDs to help you monitor and troubleshoot problems on your network. Offering compact design (441 mm x 196 mm x 44 mm) the GSW-1652T supports reliable operations in extreme operating environments.

Based on familiar, proven Ethernet technology, GSW-1652T provides 32Gbps of aggregate bandwidth to improve network performance and throughput for multi-media, video streaming and real-time broadcast applications to ensure current investment to meet the future requirement.



GSW-1652T

Key Features

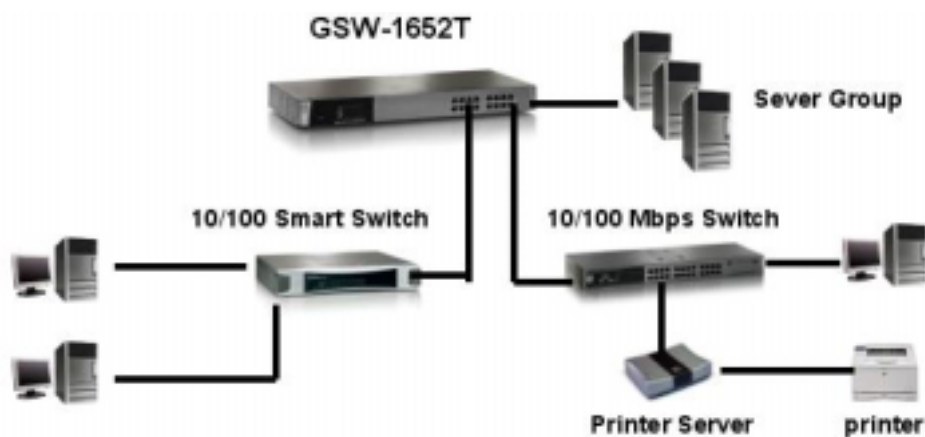
- Complies with IEEE 802.3ab, IEEE 802.3 and IEEE 802.3u standard
- 32Gbps internal switching bandwidth
- Supports Auto-negotiation on all ports
- Supports Auto MDI/MDIX
- Store –and-forward switching ensures error-free transmission
- Wire-speed packet filtering and forwarding rate
- Supports Jumbo Frame (Up to 9K bytes)
- Full duplex IEEE 802.3x flow control
- Half-duplex back pressure flow control
- Supports Plug-and-Play, nothing to configure
- “At-a-glance” LEDs for port and system status monitoring
- 19”, 1U rack-mountable size

Datasheet_GSW-1652T

Technical Specification

- **Standards Compliance**
 - IEEE 802.3 (Ethernet)
 - IEEE 802.3u (Fast Ethernet)
 - IEEE 802.3ab (Gigabit Ethernet)
 - IEEE 802.3x Flow Control
- **Ports**
 - 16 x 10/100/1000 Base-T RJ-45 ports
- **Forwarding Mode**
 - Store and Forward
- **Cabling**
 - 10Base-T: 2-pair UTP/STP Cat.3 or higher, Up to 100 m
 - 100Base-TX: 4-pair UTP/STP Cat. 5, Up to 100 m
 - 1000Base-TX: 4-pair UTP/STP Cat.5, Up to 100 m
- **MAC Address Table**
 - 8K entries
- **RAM Buffer**
 - 512KB
- **Flow Control**
 - Half Duplex: backpressure
 - Full Duplex: pause frame
- **Jumbo Frame**
 - 9K Byte
- **LEDs**
 - Per Device: Power
 - Per RJ-45 port: Speed(10/100/1000Mbps), Link/Act
- **Power Input**
 - 100~240VAC, 50/60Hz
- **Power Consumption**
 - 45 Watts (max)
- **Temperature**
 - Operating: 0~40° C (32~104° F)
 - Storage: -30~90° C (-22~194° F)
- **Humidity**
 - Operating: 10% ~ 90% non-condensing
 - Storage: 5%~90% non-condensing
- **Dimension**
 - 441mm(W) * 196mm(D) * 44mm(H)
- **EMI and Safety**
 - FCC, CE

Product Diagram



GSW-1652 Diagram

Ordering Information

- GSW-1652T: 16-Port Gigabit Switch