

## 19" 16 G + 2 SFP Gigabit Switch

**LevelOne's** new Gigabit Ethernet Switch, GSW-1655 is equipped with 16 10/100/1000 Mbps-port and 2 mini-GBIC ports Ethernet connections to interoperate with your copper or fiber network and also to provide non-blocking, wire-speed switching performance for maximum throughput.

**Reliable Transmission--** Each RJ-45 port can auto negotiate for the best possible performance running either in full or half duplex mode. Auto-MDIX is also supported on all ports which allows uplinking to another switch-free cross-over or straight cable selection. Half-and full-duplex flow control prevents packets from being dropped under heavy loading. The GSW-1655 supports Store-and-forward switching operation to ensure that only whole packets with a good CRC are passed to the destination.

**Plug & Play** --GSW-1655 gigabit switch is "Plug-&Play". It does not require software configuration. Users can immediately use any of the features of this product simply by attaching the cables and turning on the power. For instant error detection, the switch is equipped with a full range of LEDs to help you monitor and troubleshoot problems on your network. Offering compact design (441 mm x 196 mm x 44 mm) the GSW-1655 supports reliable operations in extreme operating environments.

**High Bandwidth** --Based on familiar, proven Gigabit Ethernet technology, GSW-1655 provides 36Gbps of aggregate bandwidth to improve network performance and throughput for multi-media, video streaming and real-time broadcast applications to ensure current investment to meet the future requirement.



**GSW-1655**

### Related Products



**GSW-2455**  
24G + 2 SFP Gigabit Switch



**USB-0200**  
USB to Gigabit Ethernet Adapter



**GNC-0106T**  
64bit Gigabit Ethernet Card

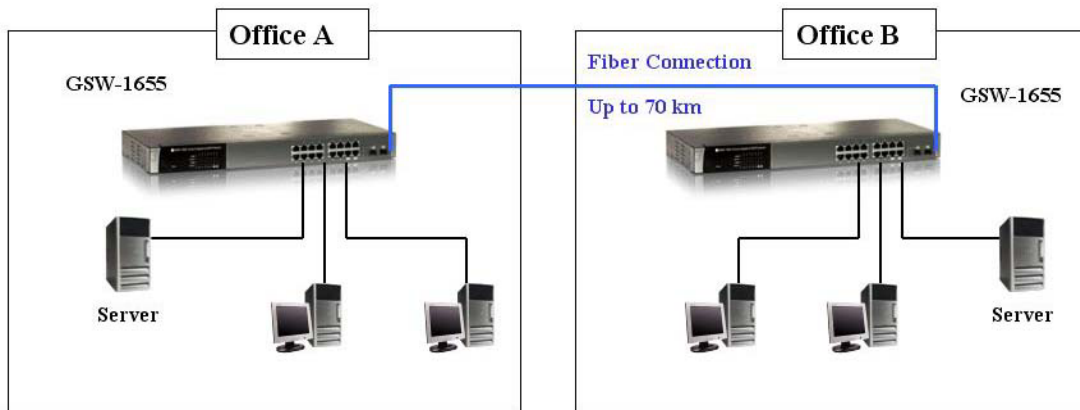
## Key Features

- 16-port 1000T + 2-port mini-GBIC
- Complies with IEEE 802.3/u, 802.3ab, 802.3z
- Store-and-forward switching architecture
- 9 Kbytes Jumbo Frame packet
- 36Gbps internal switching bandwidth
- Wire-speed packet filtering and forwarding rate
- Supports full-duplex IEEE802.1x flow control
- Supports half-duplex back pressure flow control
- Plug-and-Play, nothing to configure
- "At-a-glance" LEDs for port and system status monitoring
- 19", 1U rack-mountable size

## Technical Specification

- **Standards Compliance**  
IEEE 802.3/ IEEE 802.3u  
IEEE 802.3z Gigabit SX/LX  
IEEE 802.3ab Gigabit 1000T  
IEEE 802.3x Flow Control and Back Pressure
- **Ports**  
16 x 10/100/1000 Mbps RJ-45 ports  
2 x mini GBIC ports
- **Protocol**  
CSMA/CD
- **MAC Address Table**  
8K entries with Auto learning function
- **Memory**  
Packet Buffer: 2Mbits
- **Transfer Rate**  
14,800 Packets per second for 10Mbps  
148,800 Packets per second for 100Mbps  
1,488,000 Packets per second for 1000Mbps
- **Network Cables**  
10Base-T: 2-pair UTP/STP Cat.3/4/5, Up to 100 m  
100Base-TX: 2-pair UTP/STP Cat. 5, Up to 100 m  
1000Base-T: 4-pair UTP/STP Cat.5, Up to 100 m
- **Switch Architecture**  
Store-and-Forward
- **Jumbo Frame**  
9K Bytes
- **LEDs**  
Per Device: Power  
Per RJ-45 port: Link/Activity (Green), Full duplex (Green)  
Per Mini GBIC slot: Link , Activity
- **Power Supply**  
Internal power supply: 100~240VAC, 50/60Hz
- **Power Consumption**  
40 Watts (max); 5V 8A
- **Temperature**  
Operating: 0° C ~40° C (32° F ~ 104° F)  
Storage: -30° C ~90° C (-22° F ~ 194° F)
- **Humidity**  
Operating: 10% ~ 90% (Non-condensing)  
Storage: 5% ~ 90% (Non-condensing)
- **Dimension**  
441mm(W) \* 196mm(D) \* 44mm(H)
- **EMI and Safety**  
FCC Class A, CE

## Product Diagram



## Ordering Information

- GSW-1655: 16G + 2SFP Gigabit Switch