

## 16 Port Gigabit Switch with 4 shared SFP Ports

### Product Overview

LevelOne introduces a new member to the ProCon Switch family, the GSW-1656.

This Gigabit switch is the ideal solution for networks that demand a reliable and stable high-speed bandwidth environment to connect workgroups with file servers.

### Copper and Fiber Connectivity

The GSW-1656 ProCon Gigabit switch has 16 10/100/1000Mbps Base-T RJ-45 Nway ports of which 4 ports are SFP shared ports. These SFP ports are Mini-GBIC ports for obtaining long distance network connectivity via fiber optic connections.

### High-Speed Connectivity

With a 40Gbps backplane, the GSW-1656 provides high-speed data transmission through effective buffering to each port that is provided through dynamic memory allocation with a store-and-forward switching product architecture that also controls the data flow between transmit and receive nodes to guard against packet loss.

### Auto Select Connectivity

The GSW-1656 Gigabit switch further supports Auto-MDIX/MDI-X and Nway auto-negotiation that detects network speeds and duplex modes automatically. The LED display assists in monitoring and troubleshooting of network problems.

### Plug-and-Play Connectivity

The "Plug-and-Play" ability of the GSW-1656 makes it a suitable solution for quick installation and set-up of a high-speed network that is easy to maintain and manage. The switch has a compact design and easily be mounted with the included 19" rack mountable housing.



**GSW-1656**

### Related Products



**GSW-2456**  
24G + 4 SFP Gigabit Switch



**USB-0200**  
USB to Gigabit Ethernet Adapter



**GNC-0106T**  
64bit Gigabit Ethernet Card

## Key Features

- IEEE802.3, IEEE 802.3u, IEEE 802.3ab and IEEE 802.3z compliant
- 16 10/100/1000 Mbps RJ-45 Nway ports
- 4 shared Mini-GBIC ports for optional fiber optical communication
- Supports NWay protocol and duplex mode (Half/Full) auto-detection
- Supports auto-detection when mini GBIC modules are inserted
- Supports MDI/MDI-X auto crossover
- Wire-speed packet filtering and forwarding rate
- Supports 9K bytes Jumbo frame
- Supports 8K bytes MAC address entries
- 340K bytes buffer memory
- RoHS compliant with FCC, VCCI and CE Class A certification

## Technical Specification

### Interface

- 16 10/100/1000Mbps RJ-45 switching ports
- 4 Mini-GBIC ports

### NWay Protocol Support

Network speed: 10 / 100 / 1000Mbps

- 10Mbps: Full/Half duplex
- 100Mbps: Full/Half duplex
- 1000Mbps: Full duplex

### Backplane Bandwidth

32 Gbps

### Mac Address

8K entries

### Ram Buffer

340Kbytes

### Jumbo Frame Rate

9K byte

### Standard

IEEE802.3, IEEE802.3u, IEEE802.3z/ab and IEEE802.3x standards

### LED Indicators

- 1 x Power (green)
- 16 x 10/100M LINK/ACT (green)
- 16 x 1000M Link/ACT (green)

### Operating Temperature

0~40°C (32~104°F)

### Dimension

441 x 130 x 44 mm

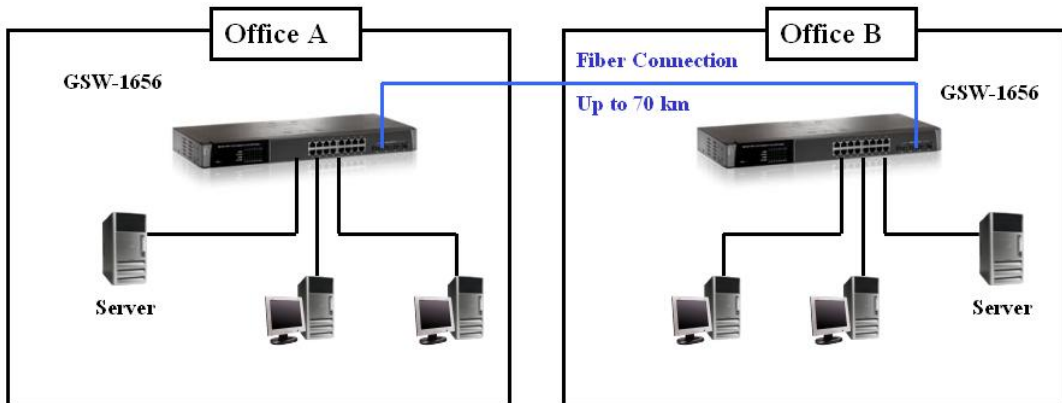
### Power Supply

Internal Power Supply  
100~240VAC/50~60Hz universal input

### Certification

FCC Class A, CE, VCCI Class A

## Product Diagram



## Ordering Information

- GSW-1656: 19" 16G + 4SFP Gigabit Switch