

24 Port Gigabit Switch with 4 shared SFP Ports

Product Overview

LevelOne introduces a new member to the ProCon Switch family, the GSW-2456.

This Gigabit switch is the ideal solution for networks that demand a reliable and stable high-speed bandwidth environment to connect workgroups with file servers.

Copper and Fiber Connectivity

The GSW-2456 ProCon Gigabit switch has 24 10/100/1000Mbps Base-T RJ-45 Nway ports of which 4 ports are SFP shared ports. These SFP ports are Mini-GBIC ports for obtaining long distance network connectivity via fiber optic connections.

High-Speed Connectivity

With a 40Gbps backplane, the GSW-2456 provides high-speed data transmission through effective buffering to each port that is provided through dynamic memory allocation with a store-and-forward switching product architecture that also controls the data flow between transmit and receive nodes to guard against packet loss.

Auto Select Connectivity

The GSW-2456 Gigabit switch further supports Auto-MDIX/MDI-X and Nway auto-negotiation that detects network speeds and duplex modes automatically. The LED display assists in monitoring and troubleshooting of network problems.

Plug-and-Play Connectivity

The "Plug-and-Play" ability of the GSW-2456 makes it a suitable solution for quick installation and set-up of a high-speed network that is easy to maintain and manage. The switch has a compact design and easily be mounted with the included 19" rack mountable housing.



GSW-2456

Related Products



GSW-1656
24G + 4 SFP Gigabit
Switch



USB-0200
USB to Gigabit
Ethernet Adapter



GNC-0106T
64bit Gigabit Ethernet
Card

Key Features

- IEEE802.3, IEEE 802.3u, IEEE 802.3ab and IEEE 802.3z compliant
- 24 10/100/1000 Mbps RJ-45 Nway ports
- 4 shared Mini-GBIC ports for optional fiber optical communication
- Supports NWay protocol and duplex mode (Half/Full) auto-detection
- Supports auto-detection when mini GBIC modules are inserted
- Supports MDI/MDI-X auto crossover
- Wire-speed packet filtering and forwarding rate
- Supports 9K bytes Jumbo frame
- Supports 8K bytes MAC address entries
- 500K bytes buffer memory
- RoHS compliant with FCC, VCCI and CE Class A certification

Technical Specification

Interface

- 24 10/100/1000Mbps RJ-45 switching ports
- 4 Mini-GBIC ports

NWay Protocol Support

Network speed: 10 / 100 / 1000Mbps

- 10Mbps: Full/Half duplex
- 100Mbps: Full/Half duplex
- 1000Mbps: Full duplex

Backplane Bandwidth

48Gbps

Mac Address

8K entries

Ram Buffer

500Kbytes

Jumbo Frame Rate

9K byte

Standard

IEEE802.3, IEEE802.3u, IEEE802.3z/ab and IEEE802.3x standards

LED Indicators

- 1 x Power (green)
- 24 x 10/100M LINK/ACT (green)
- 24 x 1000M Link/ACT (green)

Operating Temperature

0~40°C (32~104°F)

Dimension

441 x 130 x 44 mm

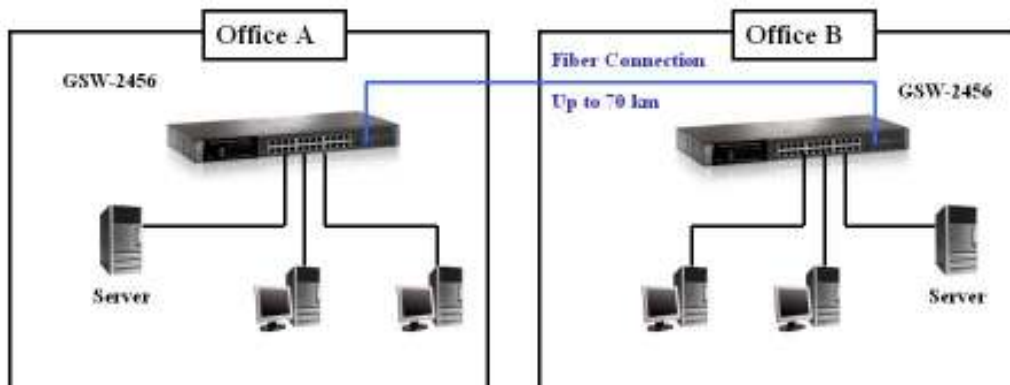
Power Supply

Internal Power Supply
100~240VAC/50~60Hz universal input

Certification

FCC Class A, CE, VCCI Class A

Product Diagram



Ordering Information

- GSW-2456: 19" 24G + 4SFP Gigabit Switch