



19" Gigabit Web Smart Switch (16/24-port*1000T)

LevelOne now offers the new Gigabit Ethernet Web Smart Switches, GSW-1674T and GSW-2474T. These two new switches are equipped with 16/24 10/100/1000 Mbps ports with Auto MDI/MDIX crossover detection function. Each port can auto negotiate for maximum performance running in full or half duplex mode. Friendly web management features are ready for users easily to configure and maintain this device through a general web browser. The MAC address learning function prevents data transfer error while the data flow control function avoids packet collisions. Furthermore, the trunk function enables these switches to cascade with double-time bandwidths. In addition the port-based VLAN function provides both network security and cost-effective solutions to eliminate the need of extra expensive router. Without any compromising of security, the GSW-1674T/2474T offers the extra bandwidth that is essential to solving network bottlenecks problems.



GSW-1674T



GSW-2474T

Key Features

- 16/24 x 10/100/1000Mbps Auto-negotiation Gigabit Ethernet Port
- All RJ45 ports support auto MDI/MDIX
- Full/half duplex transfer mode for 10/100Mbps port
- Full duplex transfer mode for Gigabit port
- Wire speed reception and transmission
- Store-and-Forward switching scheme
- Up to 4K/8K for GSW-1674T/2474T unicast addresses entities per device, self-learning, and table aging.
- Supports IEEE802.3x flow control for full-duplex mode ports
- Supports port-base VLAN
- Supports port-base QoS
- Supports Trunking
- Supports Port-mirroring
- Supports Port-setting for Speed/Disable, Flow control
- Friendly Web Management Interface
- Standard 19" rack-mount size

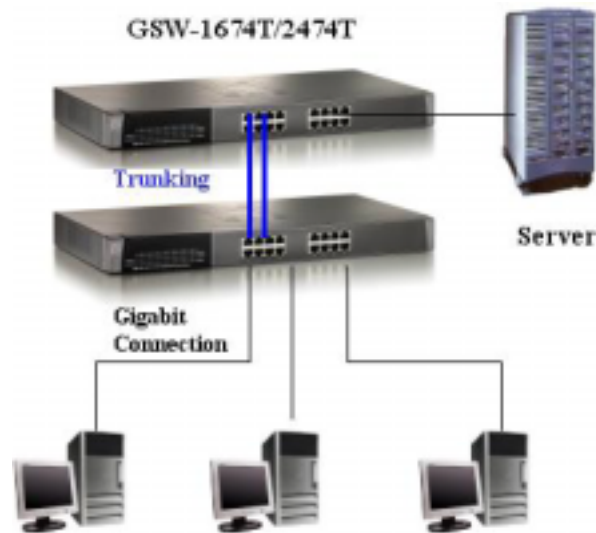
Datasheet_GSW-1674T Datasheet_GSW-2474T



Technical Specification

- Standard conformance
 - IEEE 802.3 10BASE-T Ethernet
 - IEEE 802.3u 100BASE-TX Fast Ethernet
 - IEEE 802.3ab 1000BASE-T Gigabit Ethernet
 - IEEE 802.3x Full Duplex Flow Control
- Number of Ports
 - 16/24 x 10/100/1000Mbps Auto-MDIX RJ-45 ports
- Data Transfer Rate:
 - Ethernet: 10Mbps (half duplex), 20 Mbps (full duplex)
 - Fast Ethernet: 100Mbps (half duplex), 200Mbps (full duplex)
 - Gigabit Ethernet: 2000Mbps (full-duplex) Built-in
- Network Cables
 - 10BASE T: 2-pair UTP Cat. 3, 4, 5; up to 100m
 - 100BASE-TX: 2-pair UTP Cat. 5; up to 100m
 - 1000BASE-T: 4-pair UTP Cat. 5; up to 100m
- Transmits Methods
 - Store-and-Forward
- MAC Address Learning:
 - Automatic Update
- RAM Buffer
 - 272/400K bytes per device for GSW-1674T/2474T
- Power input:
 - 100-240V AC, 50/60 Hz
- Power Consumption:
 - 25 W (Max) for GSW-1674T
 - 32 W (Max) for GSW-2474T
- Temperature:
 - Operation: 0~40
 - Storage: -10~70
- Humidity:
 - 10~90%, Non-Condensing
- Dimension:
 - 440mm(W)* 210mm(H)* 40mm(D)
- EMI and Safety:
 - CE

Product Diagram



GSW-1674T/2474T Product Diagram

Order Information

- GSW-1674T: 19" Gigabit Web Smart Switch (16*1000)
- GSW-2474T: 19" Gigabit Web Smart Switch (24*1000)

