

# L2 Plus Managed Switch - 24 GE with 4 Combo SFP + 4 10GE SFP Plus



GTL-2880

H/W Version: 1

LevelOne GTL-2880 is a Layer 2-Plus Managed switch, provides 24 x 1000Base-T ports associated with 4 x SFP (Small Form Factor Pluggable) and 4 x 10 Gigabit SFP Plus slots. Despite its affordable pricing, the GTL-2880 is equipped with advanced features such as Single IP Management which allows users to manage up to 32 switches under the same web interface, Easy Configuration Port (ECP), IPv6, IEEE 802.1D/w/s Spanning Tree, IEEE 802.1X Access Control, IEEE 802.3az Green Ethernet and more. An ideal network solution for workgroups and edge deployments, or anyone looking for an affordable and efficient way to expand their network.

### IP Clustered Stacking Solution

With the design and implementation of SIP (Single IP Management), network administrators are allowed to virtually stack GEL-1072, GTL-2880, GTP-2880, and GTL-5280 together and manage them as one logical unit through a single IP address regardless of geographical locations of those switches. Comparing to traditional stacking, IP clustering eliminates the use of costly cables and connectors. Furthermore, it minimizes the impact of any single point of failure.

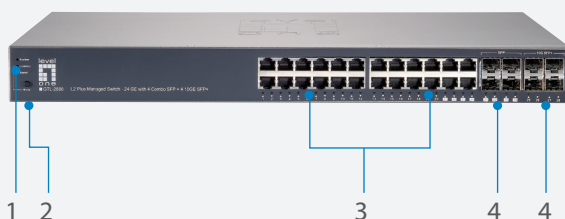
### LevelOne Easy Configuration Port (ECP) Technology

Each switch port can now be fully optimized through a predefined role and settings which are based on the type of a device such as an IP camera or a VoIP phone

to be connected to. For instance, even if a surveillance system integrator who lacks of IT administration skills, can still easily enables the role and applies settings like VLAN, QoS, port security and spanning tree to all connected IP cameras on a single Web UI within a few minutes. Hence, simplifying network deployment and ensuring consistent configurations across the network.

### Enhanced Security Measures

We are always committed to providing the highest level of protection for your network resources against intrusion attacks and unauthorized access. Delivering robust access control, each Access Control List (ACL) consists of up to 512 entries, allowing you to configure a fine-grained restriction policy based on frame type, TCP/UDP ports, MAC address and VLAN ID in order to get deep inspection on your network traffic. In addition, with the implementation of port-based authentication (IEEE 802.1X), messages can be encrypted, therefore preventing intruders from getting authentication credentials.



- 1. LED Indicators
- 2. Mode Button
- 3. 10/100/1000Mbps RJ-45 LAN Ports
- 4. SFP (Mini-GBIC) Slot



- 5. RS-232 Port
- 6. Power Socket

## Technical Specification

### Standard Compliance

IEEE 802.3 10-BASE-T (Ethernet)  
 IEEE 802.3u 100-BASE-TX (Fast Ethernet)  
 IEEE 802.3ab 1000BASE-T (Gigabit Ethernet)  
 IEEE 802.1D MAC Bridges  
 IEEE802.1p priority tags  
 IEEE802.1Q VLAN  
 IEEE802.3ac VLAN tagging  
 IEEE802.3ad Link aggregation control protocol  
 IEEE802.1w Fast Spanning Tree  
 IEEE802.1X authentication  
 IEEE802.3az Energy Efficient Ethernet

### Performance

#### Switching Capacity:

128 Gbps switching fabric with up to 95 Mbps forwarding rates  
 8K MAC addresses entries with auto-learning function  
 Supports Jumbo frame, up to 9.8K  
 Prevents traffic on a LAN from being disrupted by a broadcast, multicast, or unicast storm on a port  
 Port Mirroring

#### Network Interface

20 x RJ-45 10/100/1000BASE-T ports  
 4x Gigabit RJ-45/SFP (Mini-GBIC) shared slots  
 4x 10G Gigabit SFP plus slots

### Software

#### Layer 2 feature

Spanning Tree Protocol:  
 - IEEE 802.1D Spanning Tree Protocol (STP)  
 - IEEE 802.1w Rapid Spanning Tree Protocol (RSTP)  
 - IEEE 802.1s Multiple Spanning Tree Protocol (MSTP)  
 Trunking:  
 - IEEE 802.3ad Link Aggregation Control Protocol (LACP)  
 - Trunk groups: 14, up to 8 ports per group  
 VLAN:  
 - Support up to 4K VLANS simultaneously (1~4094 VLAN IDs)  
 - IEEE 802.1q tag-base VLAN  
 - protocol-based VLAN  
 - MAC-based VLAN  
 - Management VLAN  
 - GVRP Supported  
 DHCP Relay (Layer 2):  
 - Relay of DHCP traffic to DHCP server in different VLAN.  
 IGMP Snooping:  
 - IGMP v1/v2/v3 snooping  
 - IGMP Queried  
 - IGMP Proxy

#### Security

SSH v1/v2 supported  
 HTTPS/SSL  
 IEEE 802.1X  
 Dynamic VLAN assignment  
 PVE: L2 isolation between clients in the same VLAN  
 Port based/MAC based/ IP address based security  
 Radius/Tacacs+ authentication supports  
 Storm control: Prevents traffic on a LAN from being disrupted by a broadcast, multicast, or unicast storm on a port  
 ACLs: Support for up to 512 entries

### QoS

Priority Queues: 8 hardware queues per port  
 Traffic classification based on IEEE 802.1p CoS, IP Precedence, DSCP,  
 Supports Layer 4 TCP/UDP port and ToS classification  
 Rate Limiting: Ingress policer; egress shaping and rate control

### Management

Switch Management:  
 CLI via console port or Telnet  
 Web management  
 SNMP v1, v2c, v3 User-based Security Model (USM)  
 Firmware & Configuration:  
 Dual firmware images  
 Firmware upgrade via web browser (HTTP/HTTPS) and TFTP server, or console port.  
 RMON (groups 1, 2, 3 and 9)  
 Easy Configuration Port (ECP) can configure client's QoS and security capabilities.  
 Single IP management (SIP):  
 Single IP management for a virtual stack function of up to 32 switches of GTL-2880/GTL-5280/GTP-2880/GTL-1072

#### UPnP

s-Flow  
 supports ARP inspection  
 Event / Error Log / Syslog

#### LLDP

IPv6 feature:  
 - IPv6 host mode  
 - IPv6 stateless address auto-configuration  
 - Duplicate address detection (DAD)  
 - ICMP version6  
 - IPv6 QoS Prioritize IPv6 packets in hardware

### Green Ethernet

IEEE 802.3az Energy Efficient function:  
 Automatically turns off Ethernet port when detecting link down or Idle of client  
 Cable length detection:  
 - Adjusts the signal strength based on the cable length  
 - Reduces the power consumption for cables shorter

### Hardware

#### Memory

RAM: DDR2 128MB

Flash: 32MB

#### LED Indication

System LED, Link/Act, Speed, Gigabit Port activity LED and SFP/SFP PLUS Module LED

#### Dimension

442mm (W) x 300mm (D) x 44mm (H)

#### Weight

3.9Kg

#### Power Supply

100-240 VAC 50~60 Hz, internal , universal

#### Temperature

Operating: 0°C ~ 45°C

Storage: -20°C ~ 70°C

#### Humidity

Operating: 10% ~ 90% (Non-condensing)

#### Certifications

CE, FCC

## Key Features

- 24 Gigabit Ethernet ports with 4 shared SFP slots and 4 10 Gigabit SFP plus slots
- Single IP management supports up to 32 switches (GTL-2880/GTL-5280/GTL-1072/GTP-2880)
- Easy Configuration Port (ECP) for easy deployment of network devices such as IP phone or network camera
- Managed and deployed at IPv6 network operation
- IEEE 802.1X port-based authentication with Access Control List (ACL) of up to 512 entries for easy network security
- IEEE 802.1s Multiple Spanning Tree Protocol (MSTP) and port mirroring
- Minimize carbon footprint with advanced Energy Efficient Technology (IEEE 802.3az)
- IEEE 802.1Q VLAN allows network segmentation to enhance performance and security
- IEEE 802.3ad LACP for auto port aggregation of up to 14 groups, 8 ports per group
- Supports Dual Firmware Image which protects against failed firmware upgrade
- Provides QoS control based on ToS/DSCP for advanced traffic prioritization and bandwidth management
- DDMI SFP transceiver supported

## Related Product



### GTL-5280

L2 Plus Managed Switch - 48 GE with 4 Combo SFP + 4 10GE SFP Plus



### GTP-2880

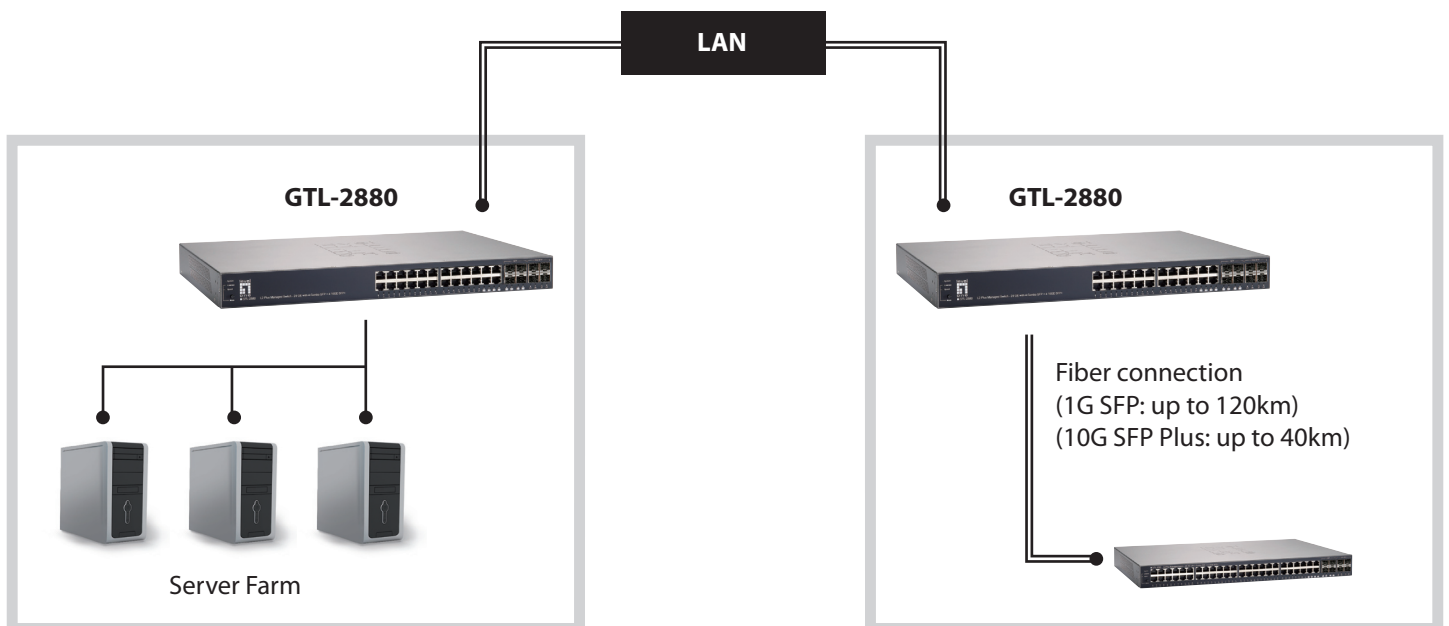
L2 Plus Managed Switch - 24 GE PoE with 4 Combo SFP + 4 10GE SFP+

## Product Diagram

—— Ethernet Cable (RJ-45)

==== Fiber

Virtual stack (SIP ) with  
GTL-5280, GTL-2880, GTP-2880, GEL-1072



**Order Information****GTL-2880:** L2 Plus Managed Switch - 24 GE with 4 Combo SFP + 4 10GE SFP Plus**Package Contents**

GTL-2880  
 Power Cord  
 Rackmount Kit  
 RS-232 Console Cable  
 CD Manual  
 QIG (Quick Install Guide)

**Optional Accessories**

**GVT-0300**  
 1.25Gbps SFP Transceiver,  
 Duplex LC connector (550m)



**GVT-0301**  
 1.25Gbps SFP Transceiver,  
 Duplex LC connector (10km)



**GVT-0302**  
 1.25Gbps SFP Transceiver,  
 Duplex LC connector (80km)



**SFP-3001**  
 1.25Gbps SFP Transceiver,  
 Duplex LC connector (550m)



**SFP-3211**  
 1.25Gbps SFP Transceiver,  
 Duplex LC connector (10km)



**SFP-3611**  
 1.25Gbps SFP Transceiver,  
 Duplex LC connector (80km)



**SFP-3111**  
 1.25Gbps SFP Transceiver,  
 Duplex LC connector, MLX  
 (2km)



**SFP-3411**  
 1.25Gbps SFP Transceiver, SM,  
 EZX, Duplex LC connector  
 (120km)



**SFP-3711**  
 1.25Gbps SFP Transceiver, SM,  
 EZX, Duplex LC connector  
 (120km)



**SFP-9221**  
 1.25Gbps Bi-Di SFP  
 Transceiver, SM, Simplex LC  
 connector (10km)



**SFP-9231**  
 1.25Gbps Bi-Di SFP  
 Transceiver, SM, Simplex LC  
 connector (10km)



**SFP-9321**  
 1.25Gbps Bi-Di SFP  
 Transceiver, SM, Simplex LC  
 connector (20km)



**SFP-9331**  
 1.25Gbps Bi-Di SFP  
 Transceiver, SM, Simplex LC  
 connector (20km)



**SFP-9421**  
 1.25Gbps Bi-Di SFP  
 Transceiver, SM, Simplex LC  
 connector (40km)



**SFP-9431**  
 1.25Gbps Bi-Di SFP  
 Transceiver, SM, Simplex LC  
 connector (40km)



**SFP-6101**  
 10Gbps Multi-mode SFP Plus  
 Transceiver (300m)



**SFP-6121**  
 10Gbps Single-mode SFP Plus  
 Transceiver (10km)



**SFP-6141**  
 10Gbps Single-mode SFP  
 Plus Transceiver (40km)