



3-Slot Gigabit Modular L2 Managed Switch



MSL-3S79

H/W Version: 1

The MSL-3S79, is a multi-port Layer 2 managed switch with 3 slots for 8-port Gigabit Ethernet Modules. It can be used to build high-performance switched workgroup networks, providing wire-speed, Gigabit Ethernet switching with high-performance at a low per-port cost.

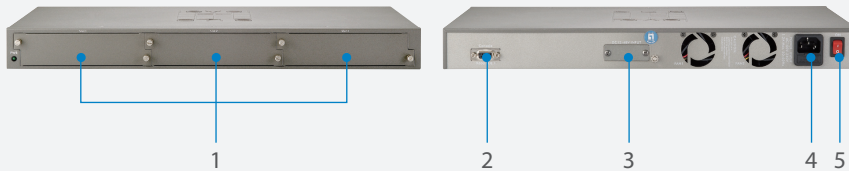
Performance and Scalability

The MSL-3S79 features outstanding switching performance with total back-plane of 48Gbps, and it also has a 16K auto-learning MAC address table. The MSL-3S79 is armed with 3 module slots, and with this flexible port slot design, it can support up to 24 Gigabit TP ports or 24 Gigabit SFP ports. It can also support a combination of both TP and SFP ports, which can fulfill customers' requirement demands across a multitude of applications.

The MSL-3S79 features 802.3ad Link Aggregation Control Protocol (LACP), increasing the bandwidth by combining physical network links into a single logical link. It also supports IGMP v1/v2 to fulfill the requirements of applications such as IPTV. It also offers 4,000 VLANs with Port-based and 802.1Q VLAN support.

Security

The MSL-3S79 offers many enhanced security features. Port Security blocks unauthorized users by locking their MAC addresses. IP Security can prevent unauthorized users. Also it supports Port-based 802.1X and RADIUS Authentication which are especially ideal for enterprise users.



1. Modular Slots
2. RS-232 Console Port
3. Redundant Power Supply Connector
4. AC Power Jack
5. Power Switch

Key Features

- Modular design to improve the flexibility of network capacity
- 16K MAC Address
- Supports Jumbo Frames up to 10K
- Provides Port-base VLAN, 802.3ad LACP with Port Trunking features
- IGMP Snooping v1/v2 with Port Mirroring supported
- Support 802.1x access control

Related Products



FGL-2870
24 FE + 4 GE with 4 Combo SFP L2 Managed Switch



GEL-2870
28 GE with 4 Combo SFP L2 Managed Switch

Technical Specifications

Physical Interfaces

3 Gigabit Module Slots
1 RS232 console port
1 AC Power Jack
2 FANs

Performance

Switching Capacity: 48Gbps
MAC Address Table Size: 16K
Packet Buffer Size: 6Mbits

L2 Features

- Auto-negotiation for port speed and duplex mode
- Flow Control: IEEE 802.3x & Back-Pressure
- Spanning Tree Protocol:
 - IEEE 802.1D Spanning Tree Protocol (STP)
 - IEEE 802.1w Rapid Spanning Tree Protocol (RSTP)
- VLANs:
 - Supports 4K IEEE 802.1Q VLANs, port-based VLANs, GVRP
- Link Aggregation:
 - Static Trunk, IEEE 802.3ad Link Aggregation Control Protocol
 - Trunk groups: 7
 - Trunk links: 2~8 for Gigabit Ethernet port
- IGMP Snooping: IGMP v1, v2
- Jumbo Frame: 10K
- DHCP Client and DHCP server

QoS Features

- Priority Queues: 8 queues per port
- Traffic classification based on physical port, IP address, Tags, ToS and DiffServ.
- Supports WRR and Strict priority
- Bandwidth Control

Access Control List (ACL)

ACL based on Source IP and Destination IP

Security

Port Security
IP Security
Supports IEEE 802.1X Access Control
RADIUS authentication

Management

- Switch Management:
 - CLI via console port or Telnet
 - WEB management
 - SNMP v1, v2c
- Supports RMON v1
- LLDP
- Supports SNMP, SMTP
- Syslog up to 1K records

Mechanical

Dimensions (H x W x D): 44 x 440 x 280 mm (1RU)
LED Indicators

Safety

UL,
cUL,
CE/EN60950-1

Electromagnetic Compatibility

CE Mark
FCC Class A

Environmental Specifications

- Temperature:
 - 0°C to 40°C (Standard Operating)
 - 40°C to 70°C (Non-Operating)
- Humidity: 5% to 95% (Non-condensing)

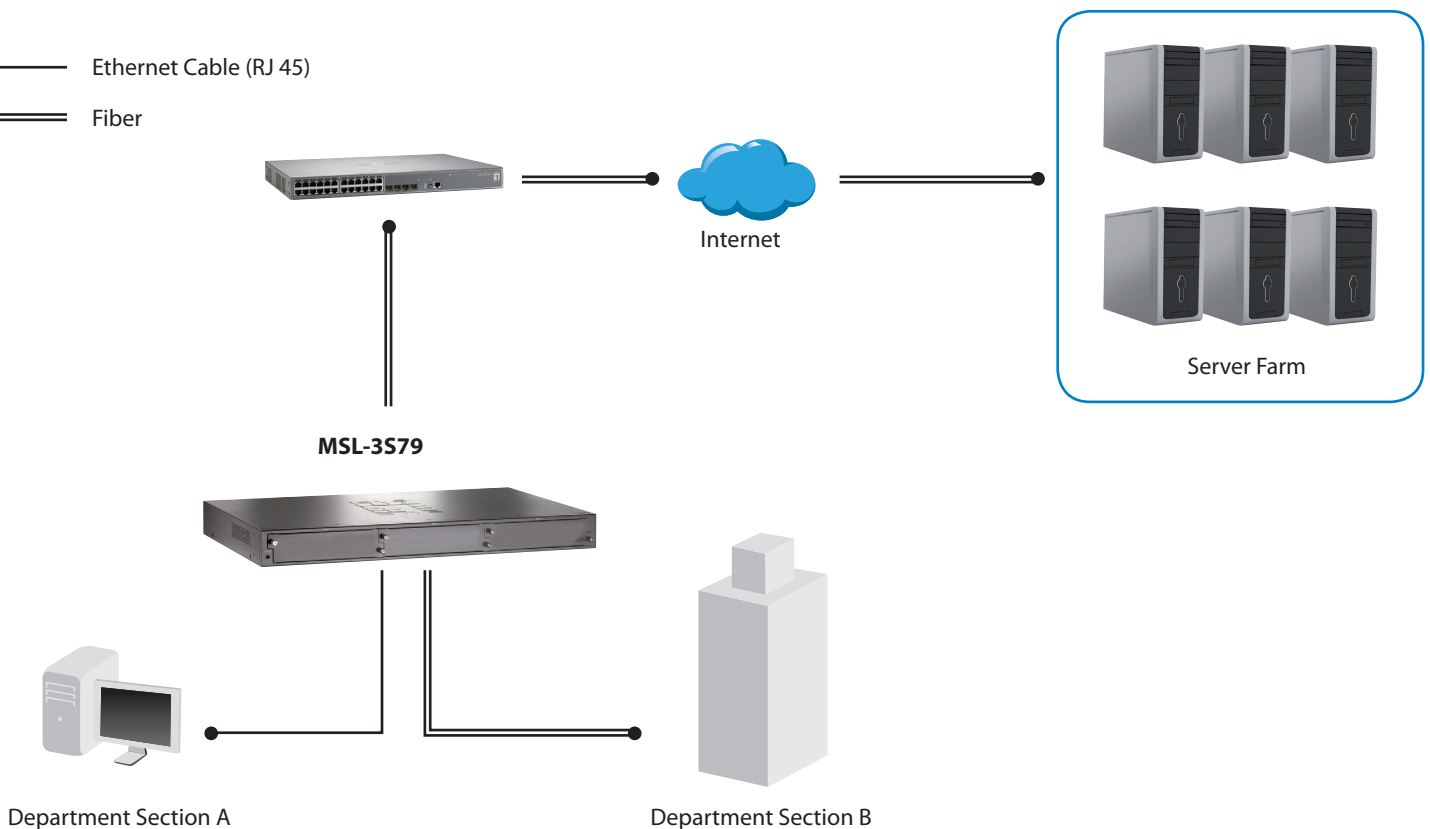
Power Specifications

Internal Power Supply: 100-240V~50-60Hz

Product Diagram

— Ethernet Cable (RJ 45)

══ Fiber



Order Information

MSL-3S79: 3-Slot Gigabit Modular L2 Managed Switch

Package Contents

MSL-3S79
Mounting Accessory (for 19" Rack Shelf)
RS-232 cable
Power Cord
CD User Manual

Optional Accessories



MDU-2453T
8-Port 10/100/1000TX Module
for GSW-2453/MSL-3S79



MDU-2453M
8-Port SFP Module for GSW-
2453/MSL-3S79



MDU-2453TM
4 GE + 4 GE SFP Module for
GSW-2453/MSL-3S79