

Datasheet_WPC-0300

108 Mbps Wireless PCMCIA Adapter

LevelOne's WPC-0300 is a Wireless 32-bit PCMCIA adapter for using with laptop computers. The adapter complies with IEEE 802.11g and back-ward compatible to the IEEE 802.11b standard. It also features the newest Wireless Super G technology to deliver data rates up to 108Mbps in the pure LevelOne Super G 108Mbps environment. This adapter is equipped with PCMCIA Cardbus 32-bit user-friendly interface thus enabling high-bandwidth data transfers between adapter and your laptop computer. You can enjoy the best data throughput and also the capability to handle the multi-media, video streaming or real-time broadcast applications.

Security is the most important issue for wireless connections. The WPC-0300 adapter secures your data transmission and prevents hackers from accessing network resources by providing standard 64/128-bit WEP encryption, enhanced WPA (Wi-Fi Process Access), WPA-PSK and also features the 802.1x for supporting strong user authentication.

With the easy-to-setup utility included in the WPC-0300 package, you can install the adapter into a laptop and operate together with a wireless network in minutes. This utility provides just the configuration tool you need to optimize the adapter's performance and site survey functions to detect available wireless access points and routers for the wireless connections.



WPC-0300

Key Features

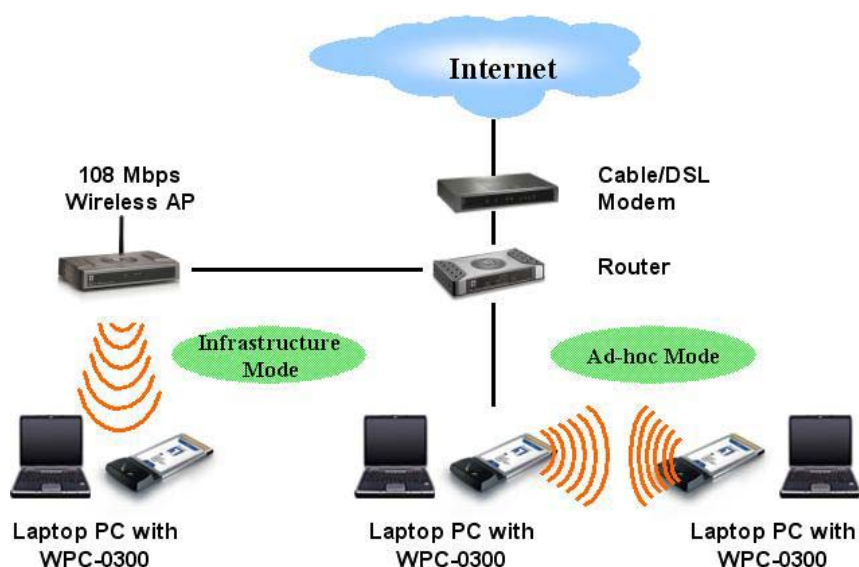
- Complies with IEEE 802.11g and 802.11b standards
- PC Cardbus 32bit compliant
- Highly efficient design mechanism to provide unbeatable performance
- Support Ad-Hoc, Infrastructure WLAN network wireless roaming
- Achieving data rate up to 108Mbps for Super G, 54Mbps for 802.11g and 11Mbps for 802.11b
- Network security with 64/128-bit WEP, WPA, WPA-PSK and 802.1x user authentication
- Auto-switch between the two standards, IEEE 802.11b and 802.11g.
- Selects automatically the least crowded channel by dynamic channel selection function.
- Driver/Utility support most commonly used operating systems including Windows 98SE/ME/ 2000/XP.

Datasheet_WPC-0300

Technical Specification

- **Standard Conformance:**
IEEE 802.11b; IEEE 802.11g
- **Interface:**
PC Cardbus 32bit compliant
- **Media Access Control**
CSMA/CA with ACK
- **Sensitivity for 802.11b**
BPSK (1.2Mbps): 90 dBm
QPSK (5.5Mbps): 86 dBm
CCK (11Mbps): 82 dBm
- **Sensitivity for 802.11g**
54 Mbps: -72 dBm 18 Mbps: -82 dBm
48 Mbps: -72 dBm 12 Mbps: -86 dBm
36 Mbps: -76 dBm 9 Mbps: -89 dBm
24 Mbps: -79 dBm 6 Mbps: -90 dBm
- **Frequency Range**
2.412GHz to 2.484GHz
- **Modulation Technology**
64QAM, 16QAM, BPSK, QPSK, CCK
- **Transmitter Output Power:**
15 dBm(± 2dBm)
- **Antenna Type**
Built-in Diversity Patch Antenna w/ 2 dBi gain (Max)
- **Number of Channels**
USA and Canada: 11
European: 13
Japan: 14
- **Security**
WEP 64/128-bit encryption,
WPA
WPA-PSK
802.1x user authentication in windows XP
- **Network Architecture**
Ad-Hoc and Infrastructure Mode
- **OS Support**
Windows 98SE/ ME/ 2000/ XP
- **LEDs**
WLAN: blank for activity
System Power
- **Power Consumption**
Operating: Max. 1.2A
Storage: 600mA ± 50mA
- **Temperature**
Operating: 0 ~55 C degree
Storing: -10 ~ 65 C degree
- **Humidity**
5% ~ 95% (Non-condensing)
- **Dimension**
54mm(W)*119mm(L)*12mm(H)
- **EMI and Safety**
FCC Part 15 Class B, CE

Product Diagram



Ordering Information

- WPC-0300: 108 Mbps Wireless PCMCIA Adapter