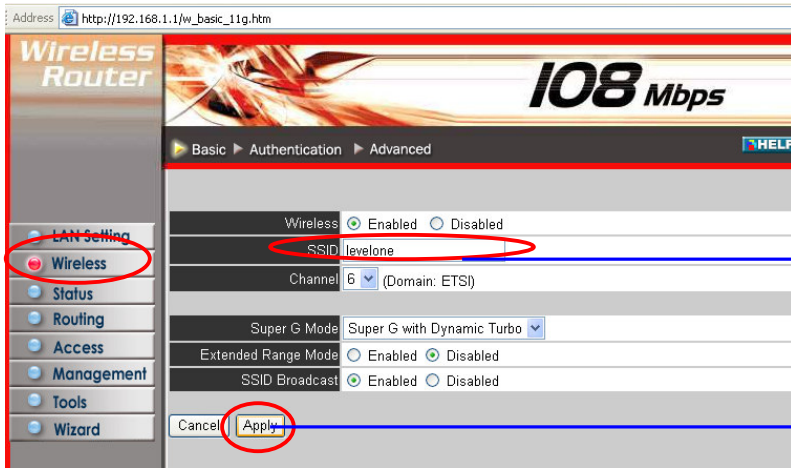
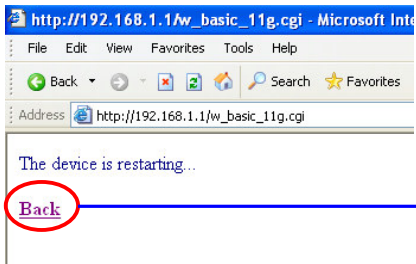


1. 請進入 WBR-3405TX 設定畫面，點選左列 "Wireless"。



請將 WBR-3405TX SSID 更改  
成容易辨識之 SSID  
(例如: levelone)

點選



點選

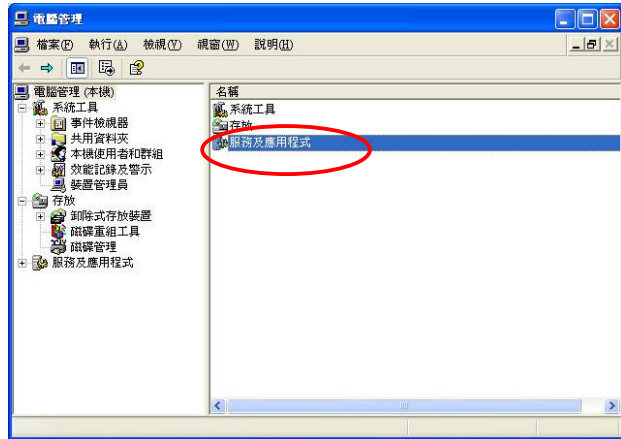
### <電腦設定>

1. 點選 "我的電腦" 按滑鼠右鍵選取 "管理"

2. 點選 "服務及應用程式"

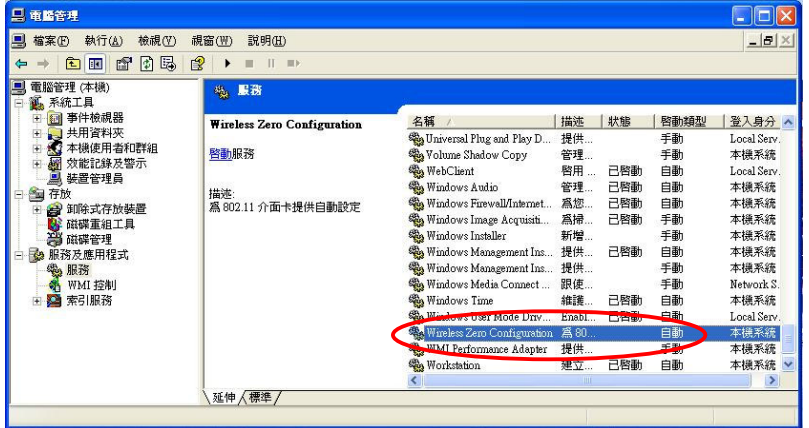
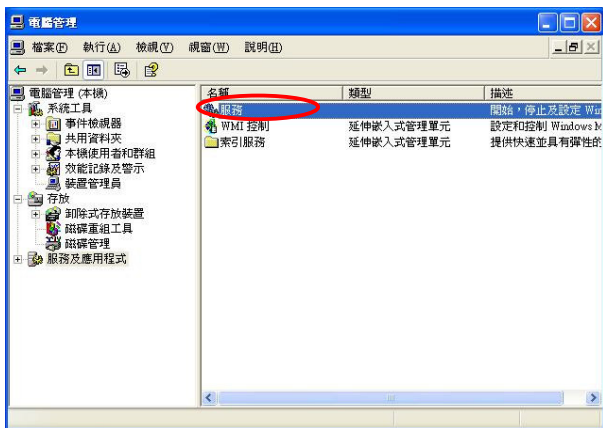


點選

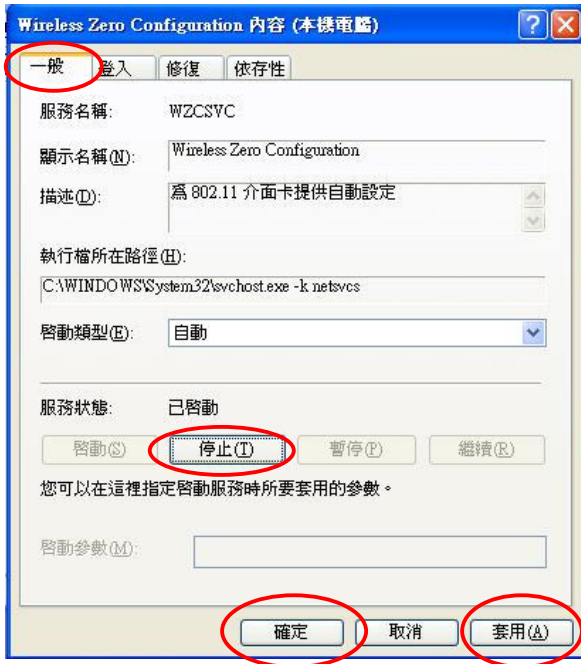


3. 點選 "服務"。

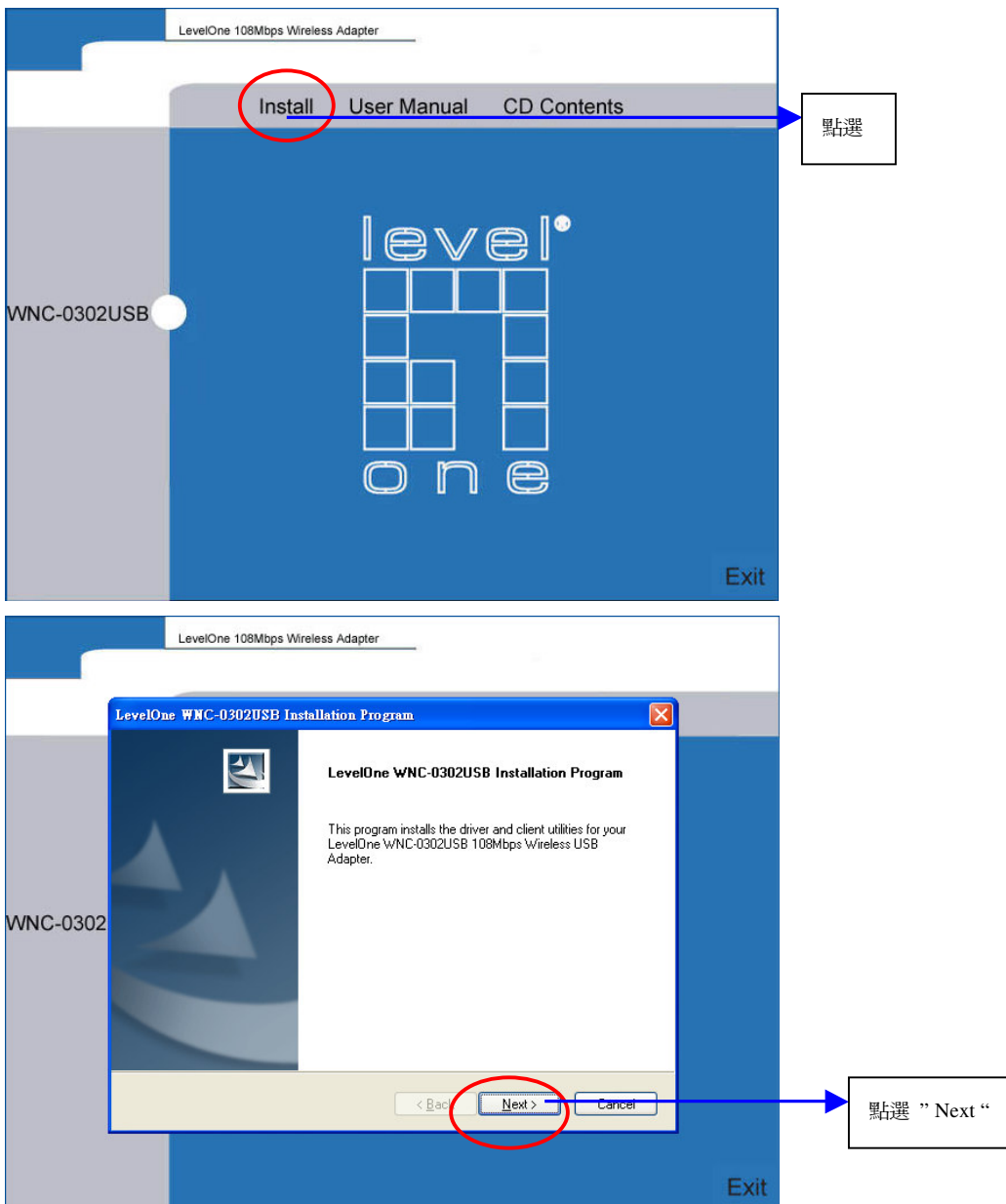
4. 點選 "Wireless Zero Configuration"。

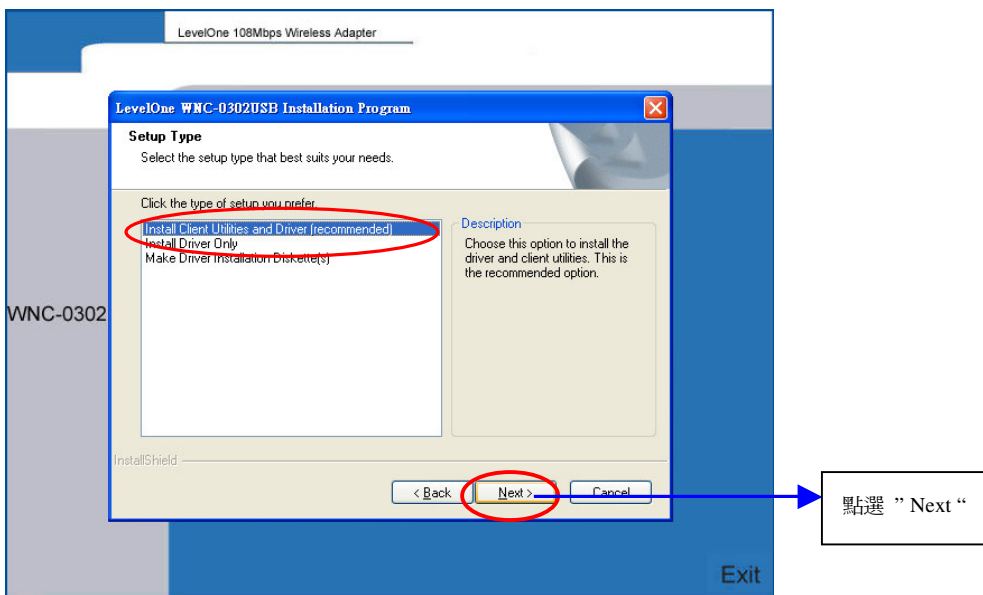
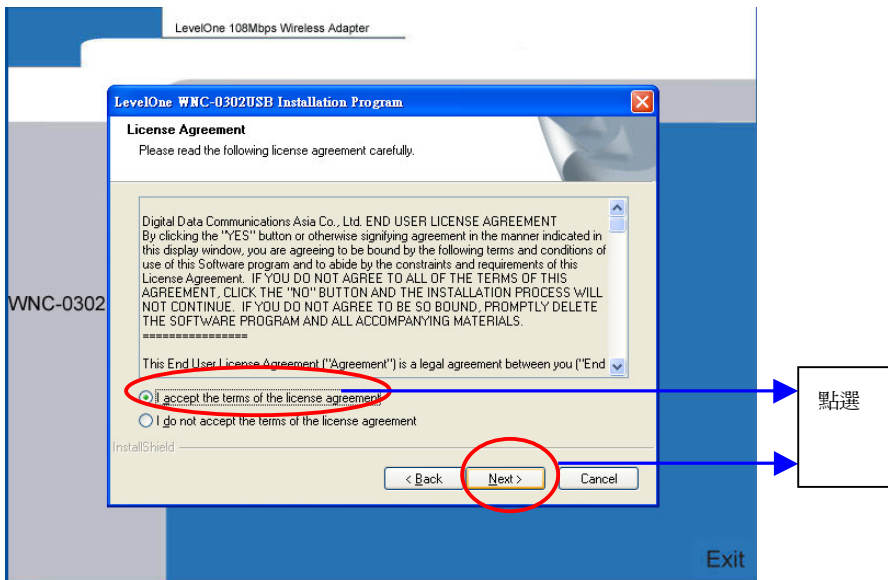


5. 點選『一般』→『停止』→『套用』→『確定』。

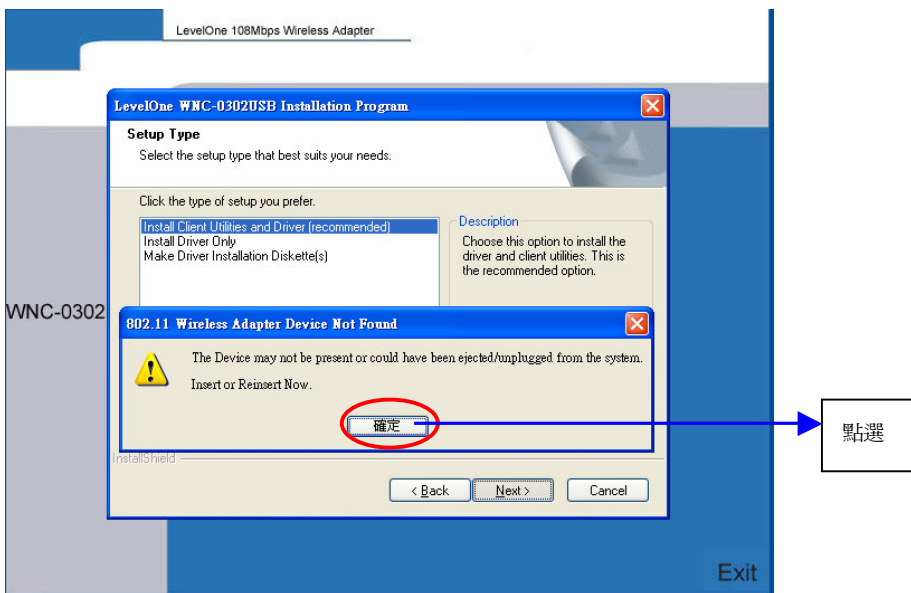


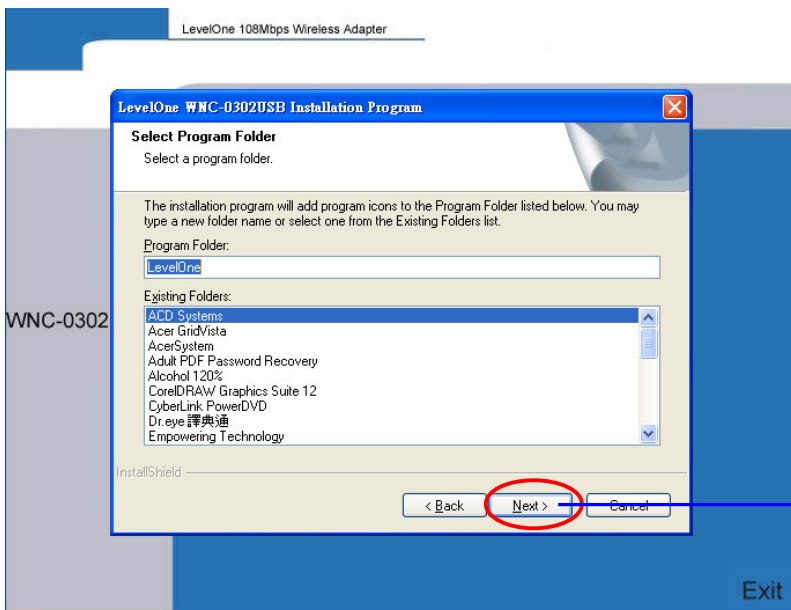
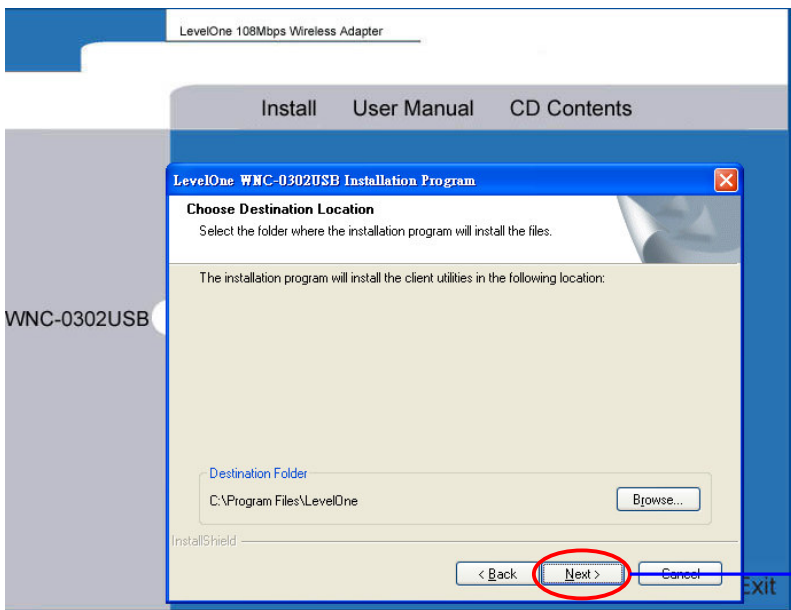
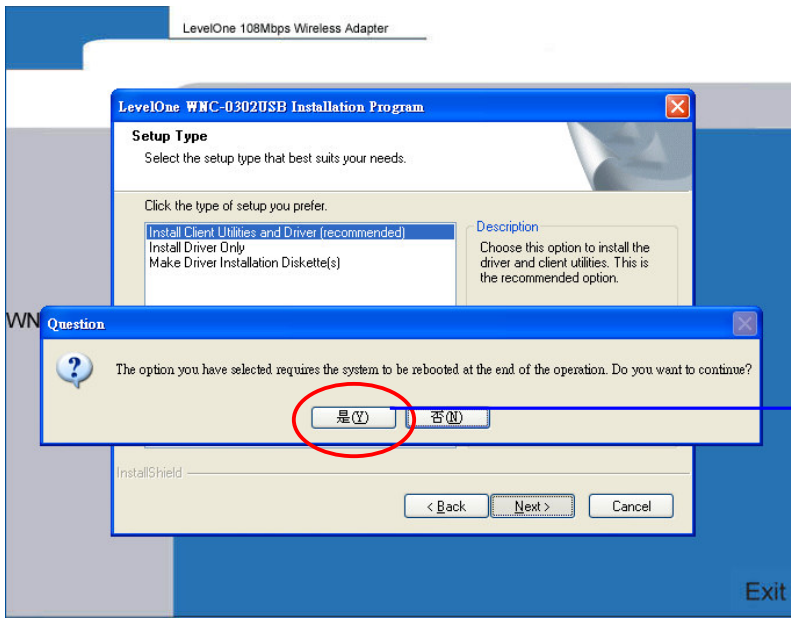
2. 將 WNC-0302USB 產品光碟片放入光碟機中，將會出現 WNC-0302USB 安裝畫面

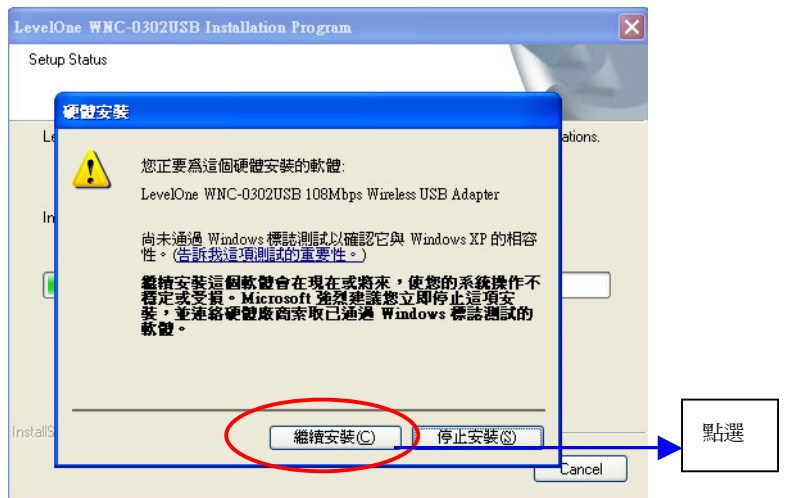
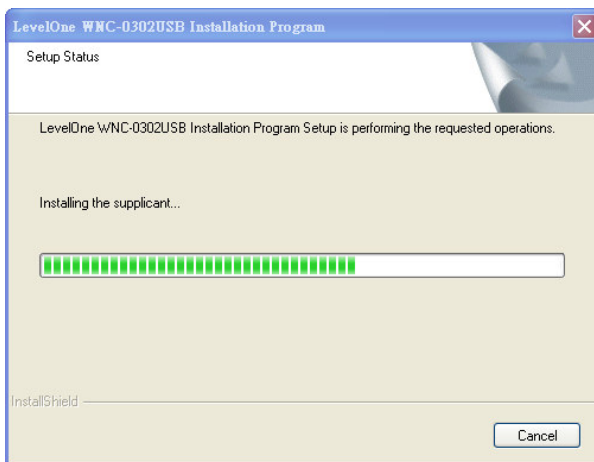
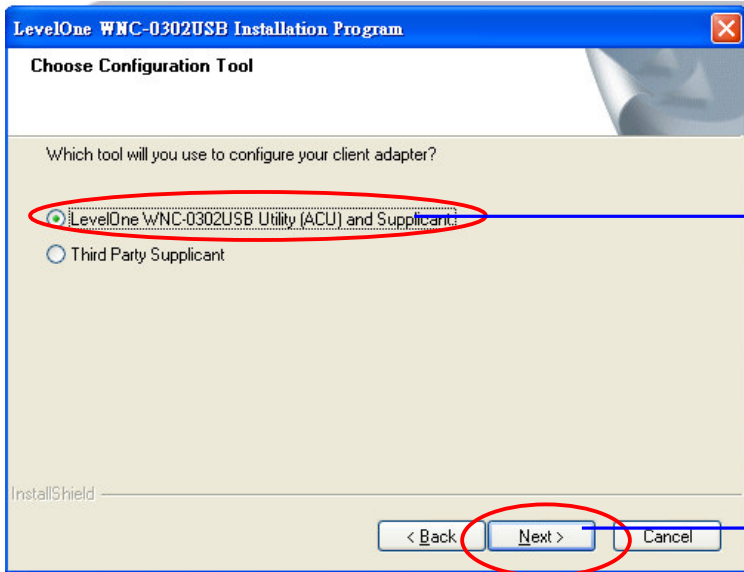
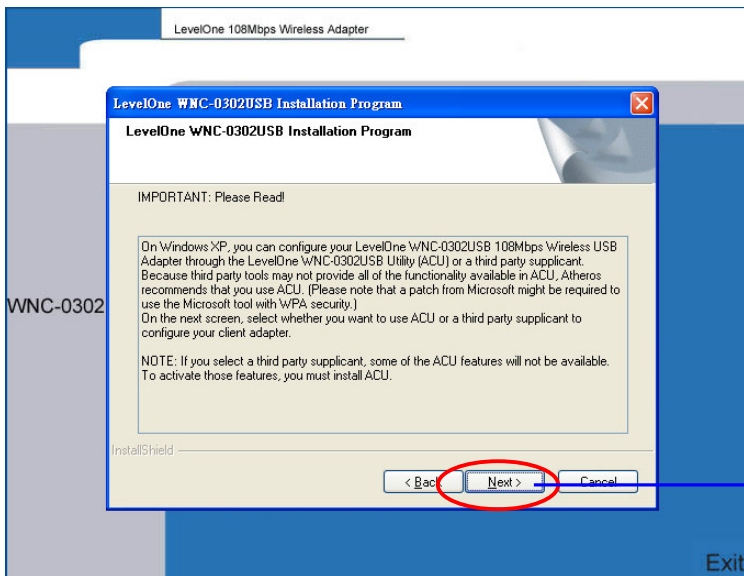




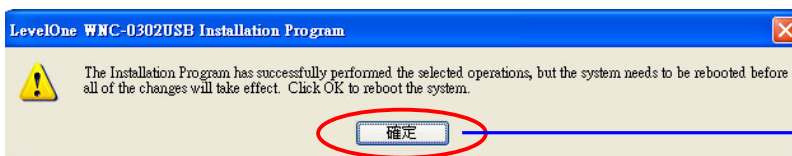
3. 當出現此視窗時將 WNC-0302USB 插入此電腦本機的 USB 埠。  
點選“確定”。



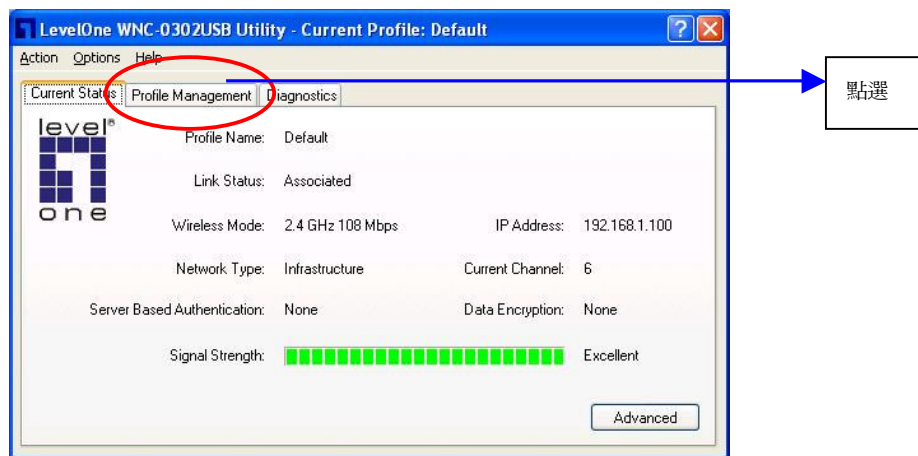
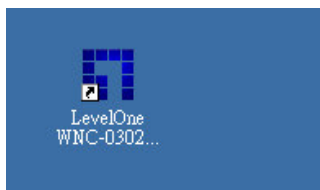




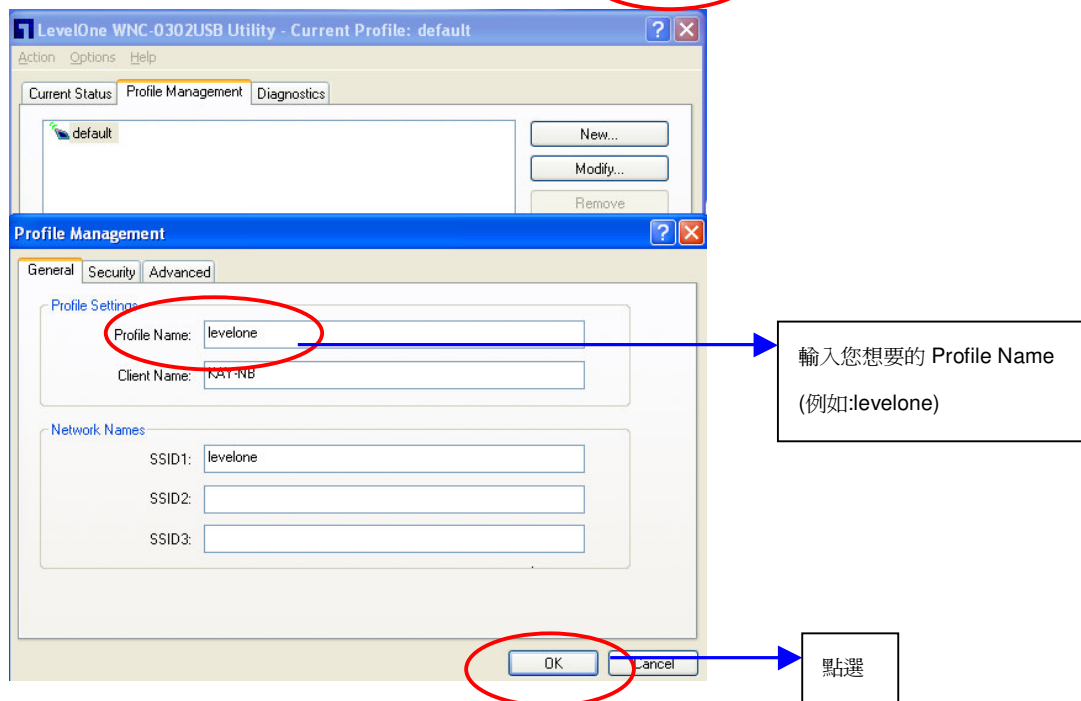
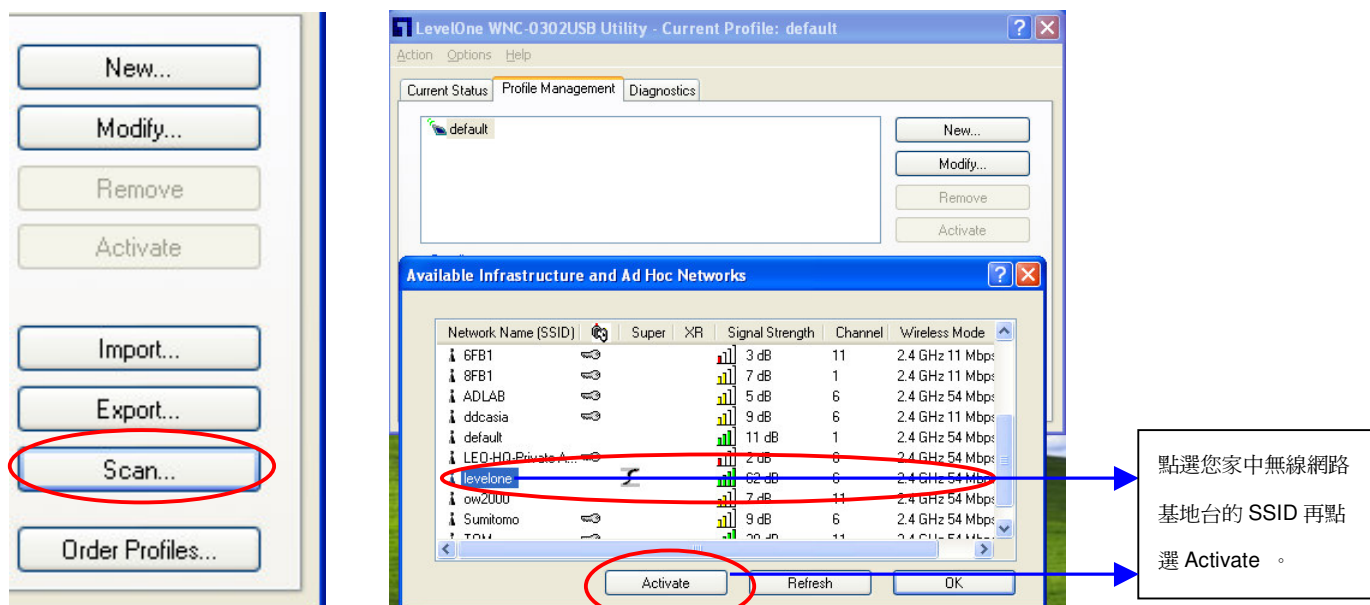
請點選 "確定", 電腦將會自動重新啟動。

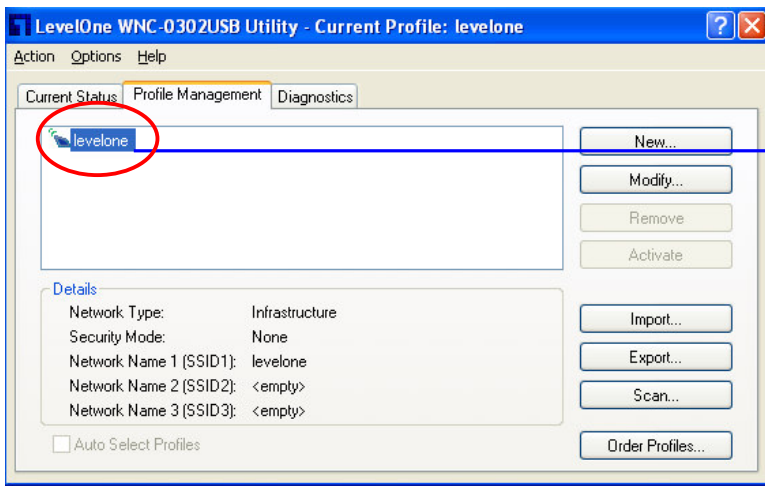


點選電腦桌面上 WNC-0302USB Utility 捷徑圖示。

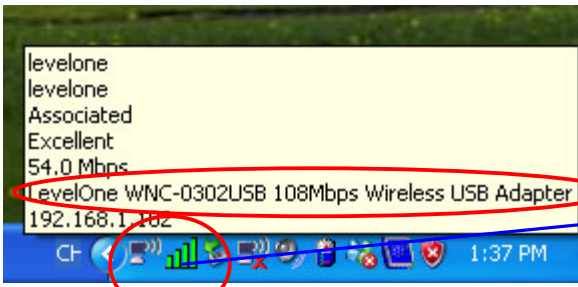


點選 "Scan" 將會自動搜尋您周圍的無線網路





已經完成設定無線網卡  
與無線基地台的連接



已成功連接 WBR-3405TX