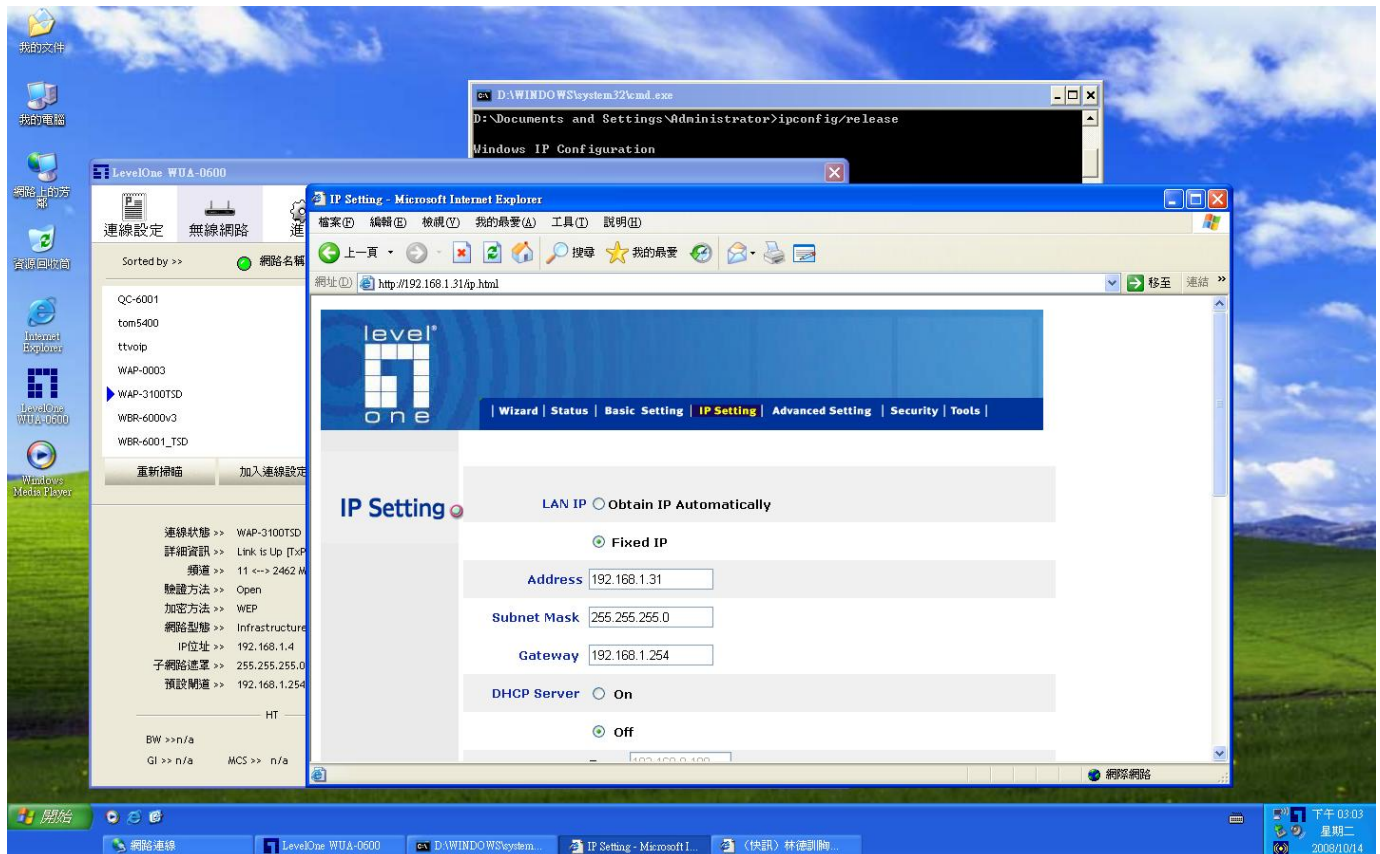




AMG-2000 with WAP-3100

1. 請設定 WAP-3100 Fixed IP.



2. 進入 AMG-2000 去新增 User.

AMG-2000 - Microsoft Internet Explorer

http://192.168.1.254/UserAuthentication/LocalUserList.shtml?mgntid=1

System Configuration User Authentication AP Management Network Configuration Utilities Status

Local User List

Add User Upload User Download User

Search

Username	Password	MAC Address	Applied Policy	Remark
			Local VPN Enabled	
jason	jason		No	Delete
tom	tom		No	Delete

(Total:2) First Previous Next Last

3. 使用無線網路去連線 WAP-3100. 然後開啓 IE browser.

LevelOne WUA-0600

無線網路

WAP-3100TSD

安全性警訊

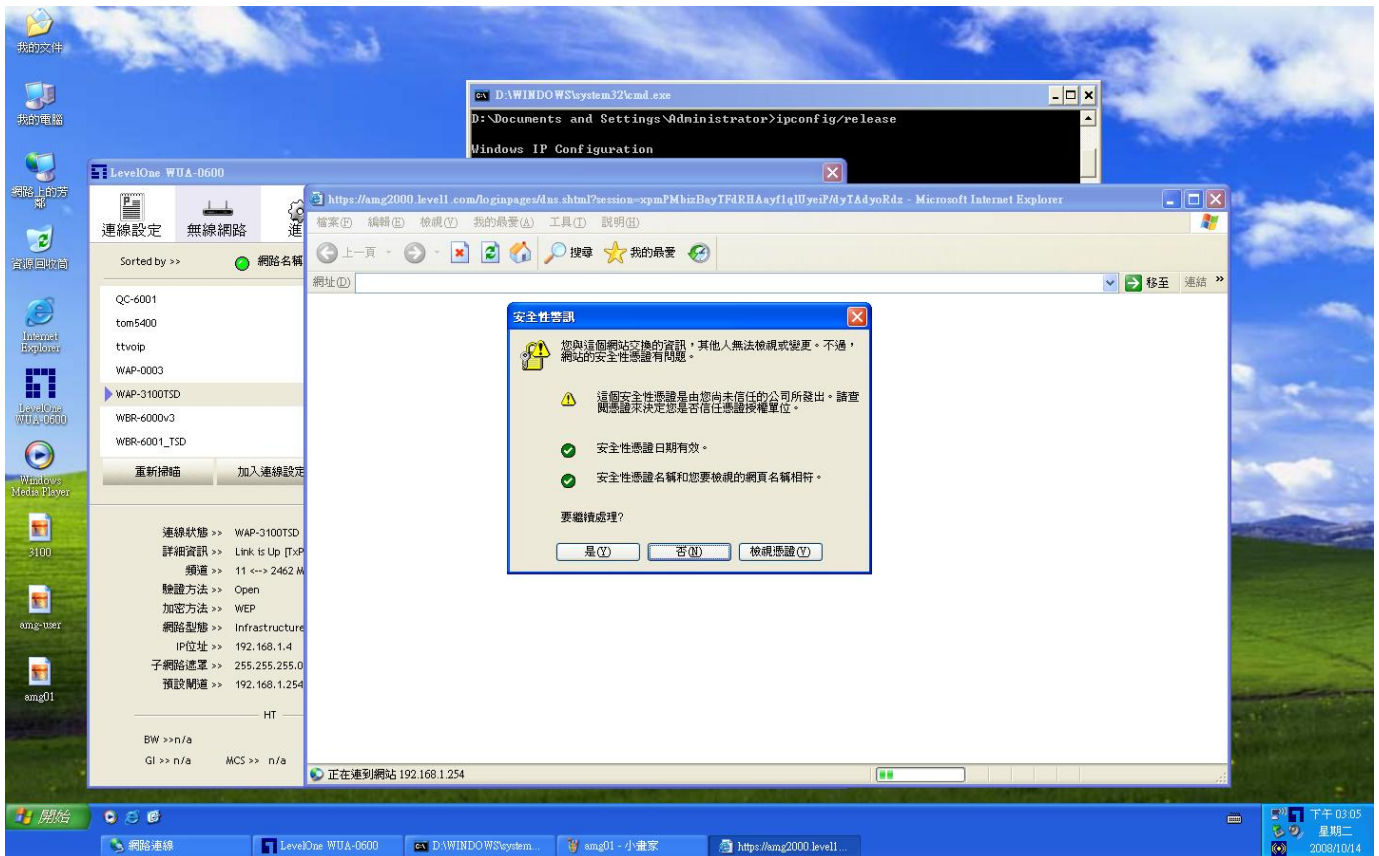
您即將透過安全性連線檢視畫面。
網路上的任何人，都無法查閱您和這個網站交換的任何資訊。

以後不顯示這個警告

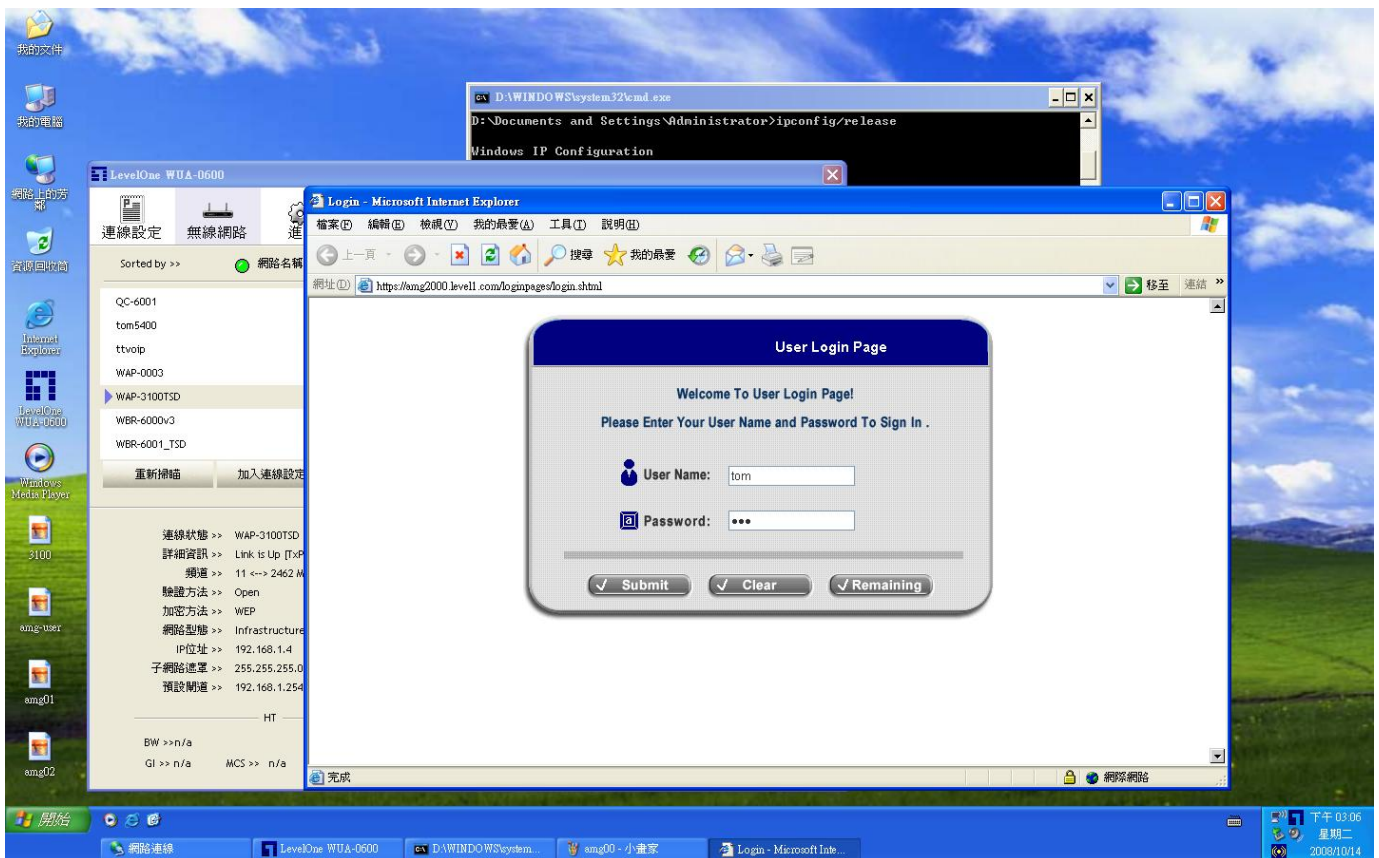
確定 其他資訊(M)

D:\>ipconfig /release

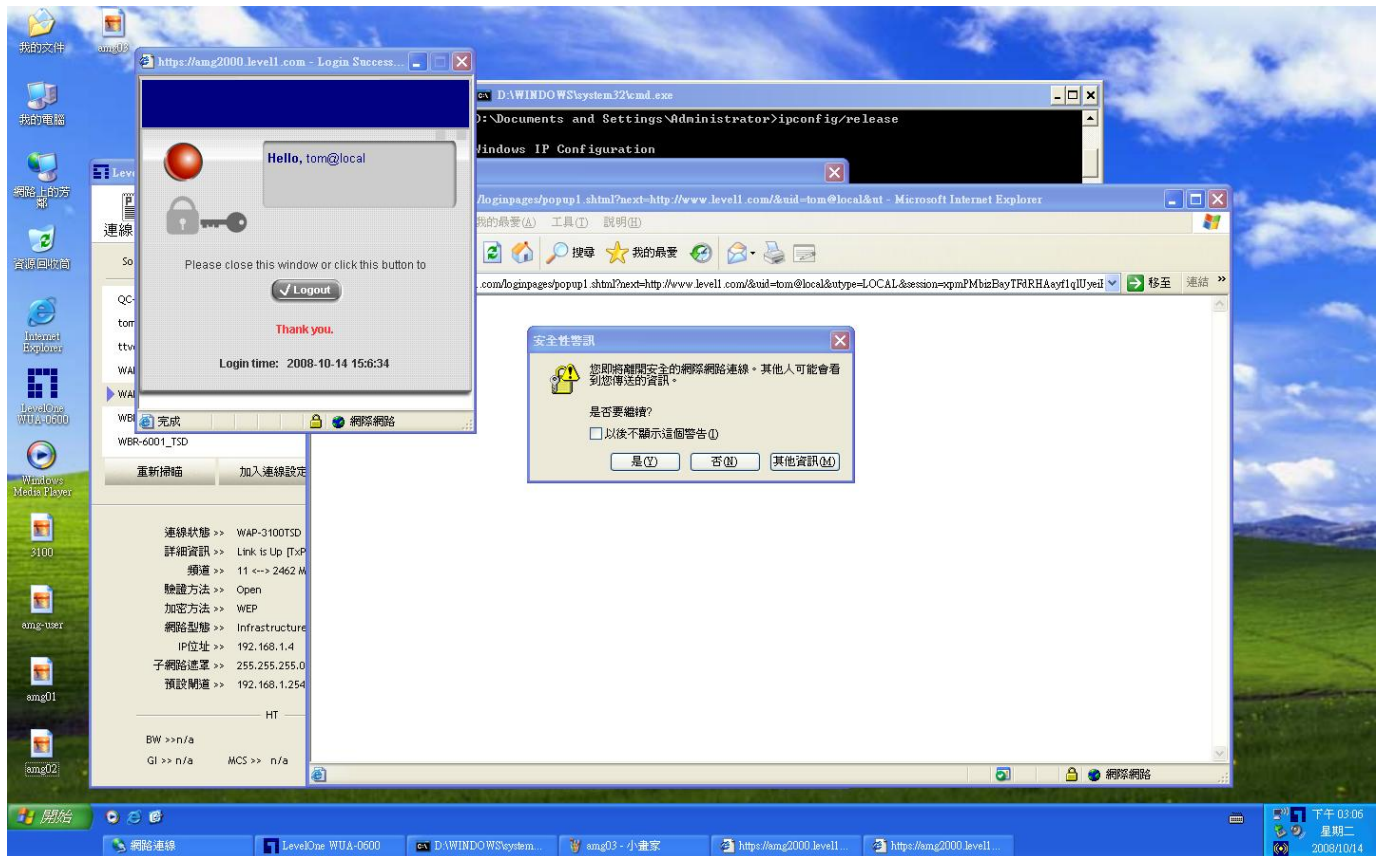
4. 會出現此確認視窗。



5. 輸入您的 user name and password.



6.成功會出現此視窗



7.成功連線至 internet.

