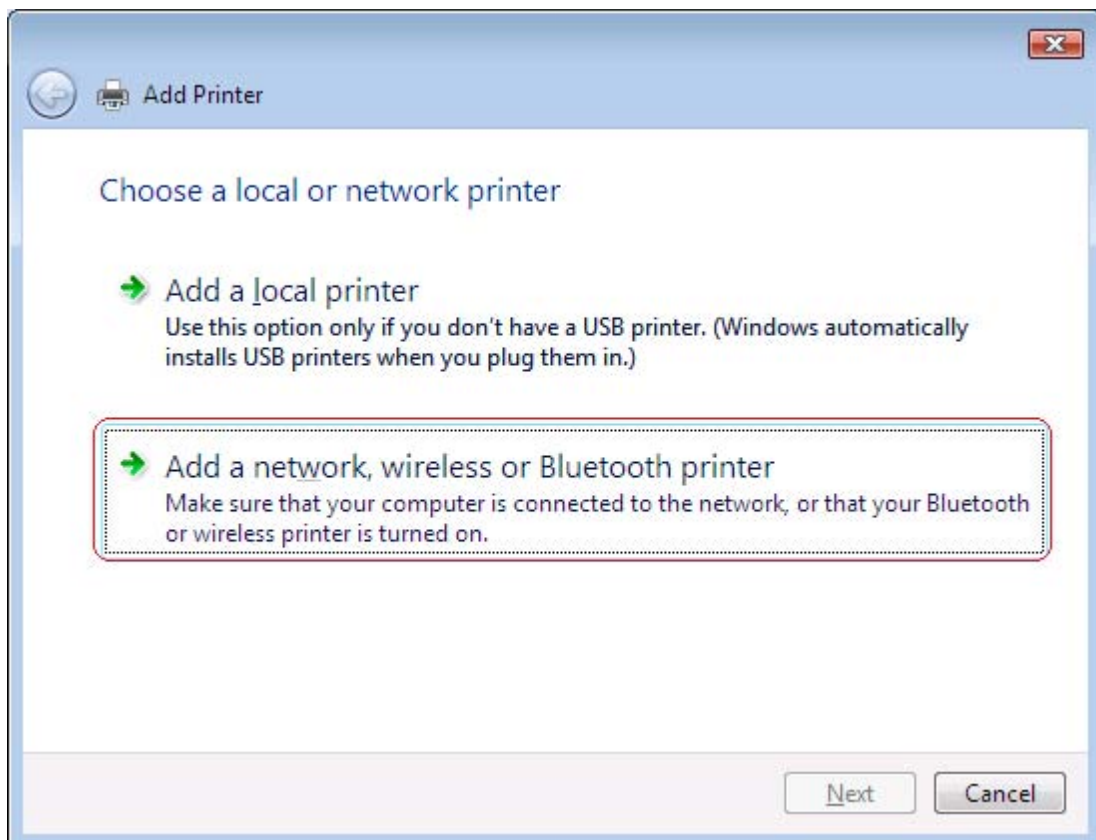
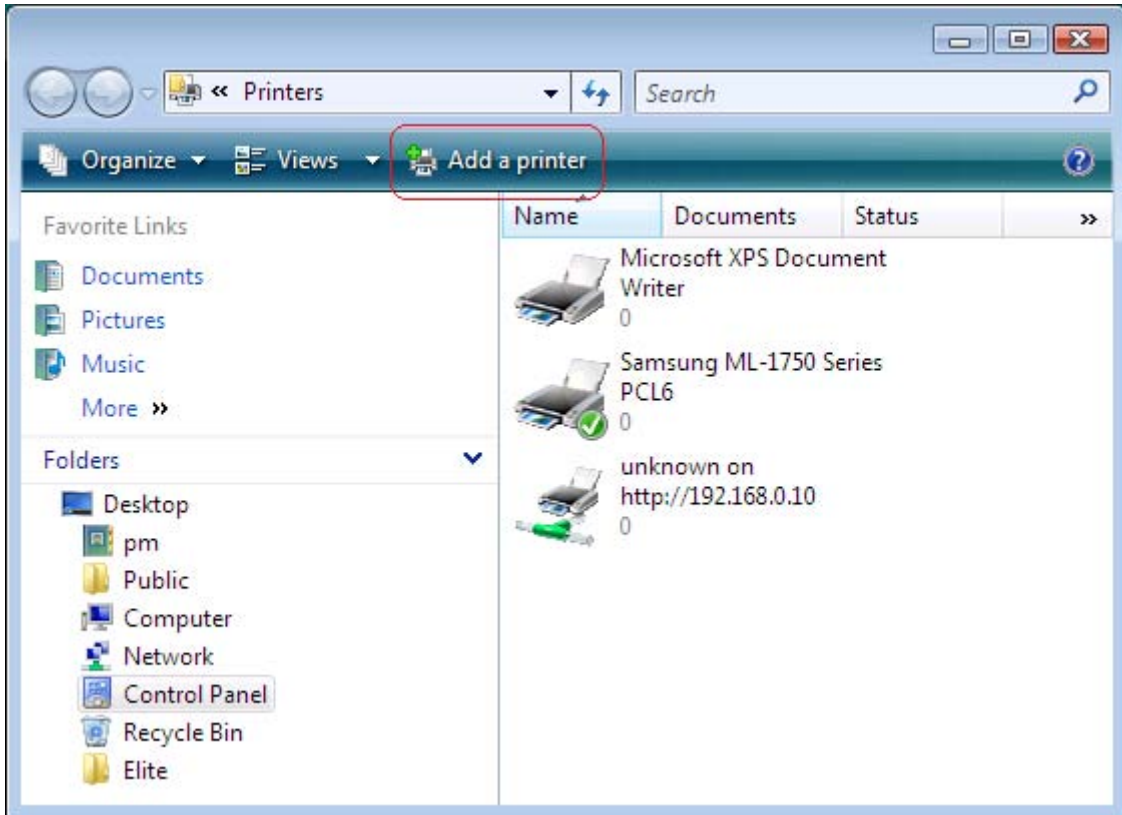
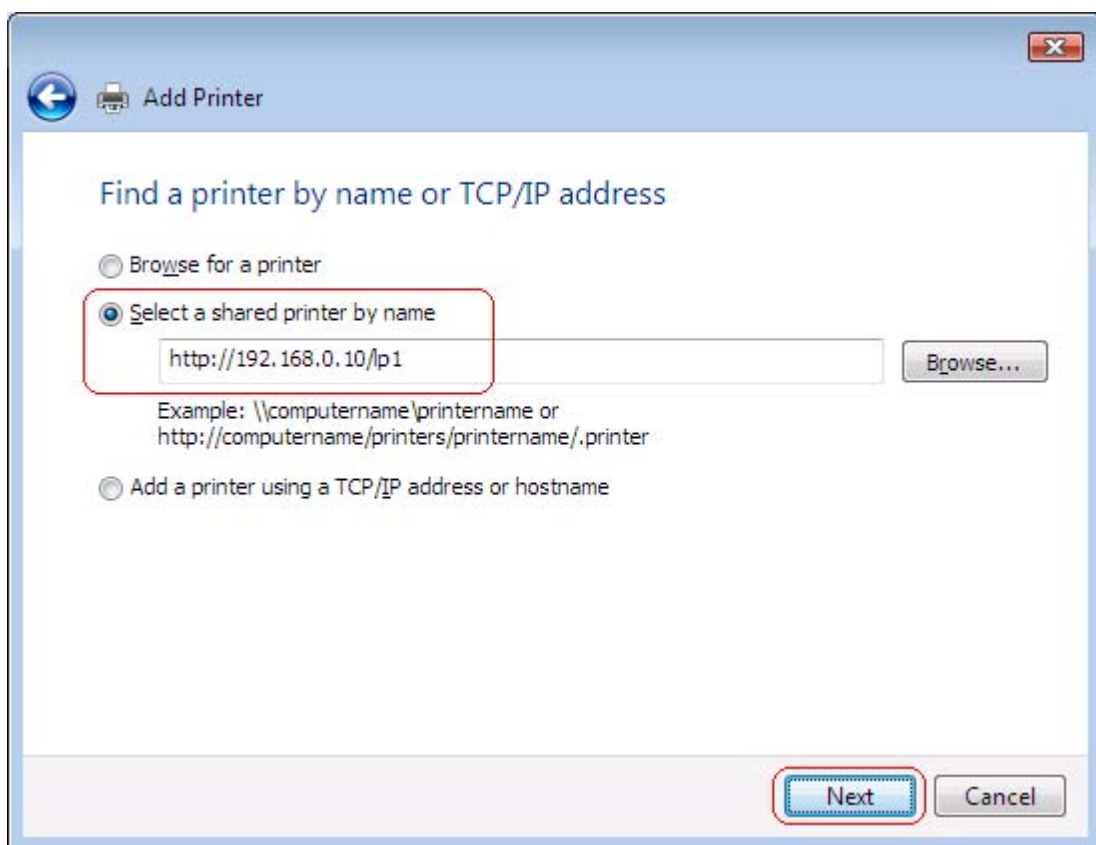
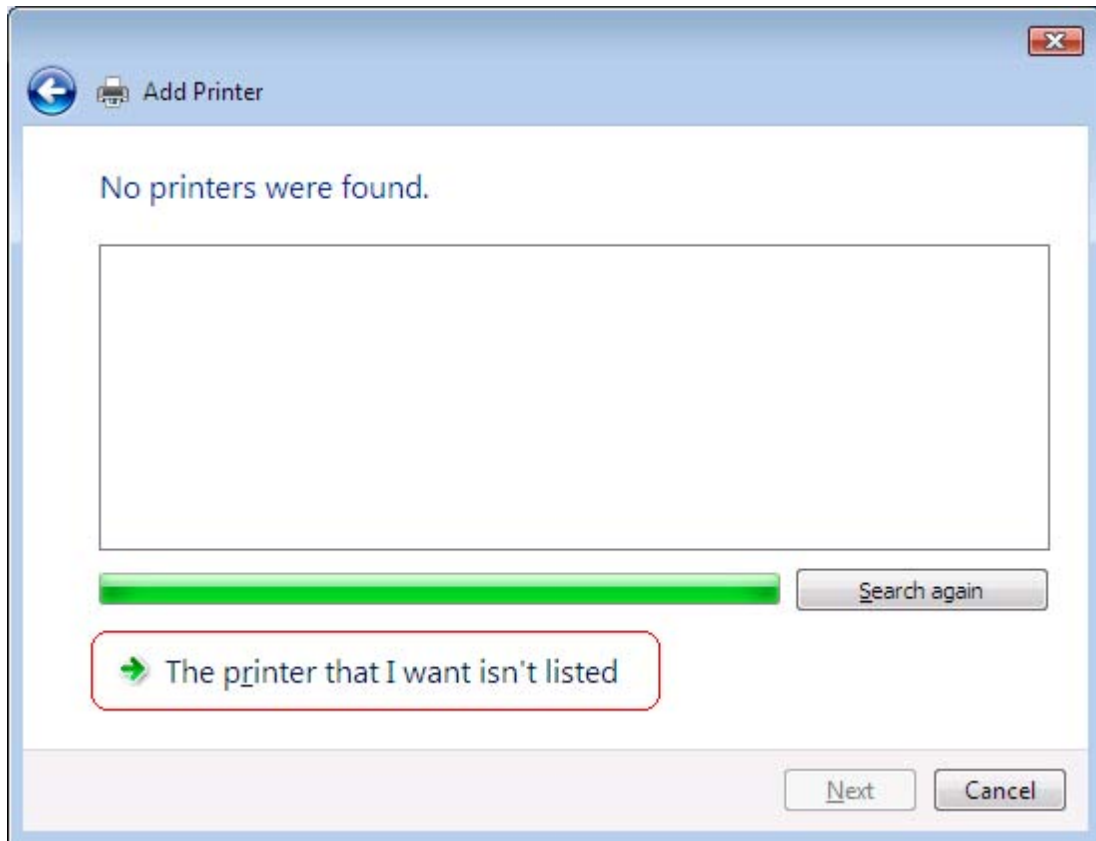


Configure an IPP port in Vista

1. Open the **Printers** window and click **Add a printer**.



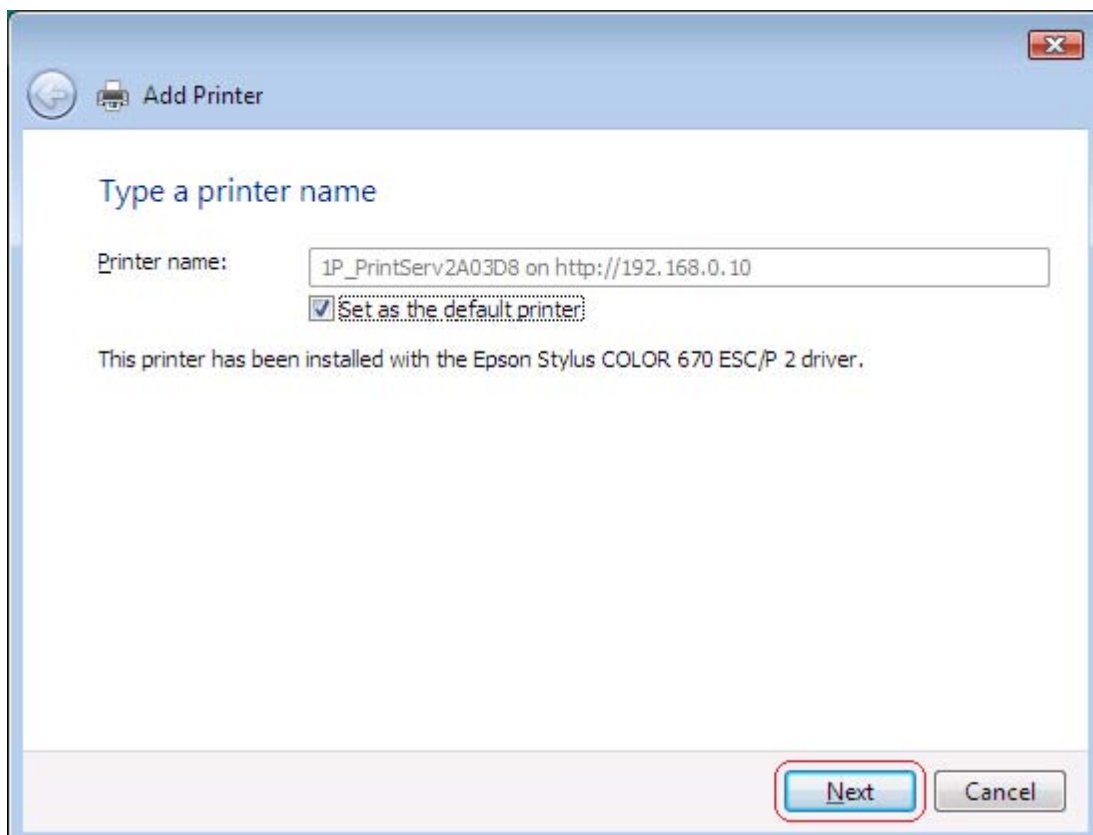
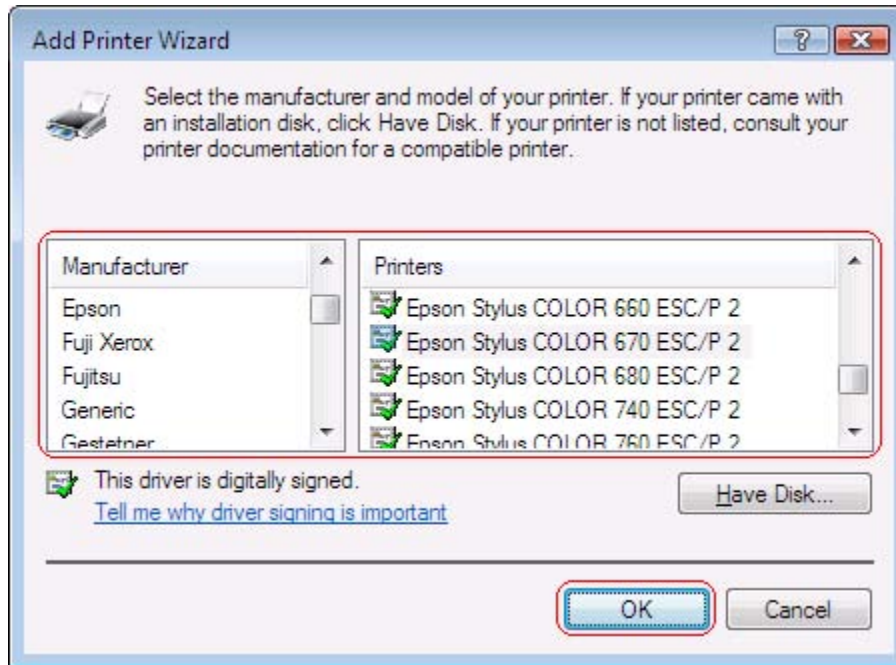
3. Click **The printer that I want isn't listed.**



For the one-port print server, **lp1** only.
For the multi-port print server, **lp1** means Parallel 1 or Parallel. **lp2** means Parallel 2 or USB 1. **lp3** means Parallel 3 or USB 2.

Click **Next**.

5. Select the printer driver or install the new one. Click **OK**.



7. Click **Finish**.

