

4. Performance Test

4.1. Test Environment



NB <--Ethernet-----> *DUT*



Wireless



AP <--Ethernet-----> *NB*



Index	Description	Section
O-P1	The ranges are 1500 meters between O and P1.	4.4.1
O-P2	The ranges are 2000 meters between O and P2.	4.4.2
O-P3	The ranges are 2500 meters between O and P3.	4.4.3
O-P4	The ranges are 3000 meters between O and P3.	4.4.4
O-P5	The ranges are 3500 meters between O and P3.	4.4.4

4.2. Equipment List

Item	Description	Model	Unit
01	Device Under Test (DUT)	WAB-3001 (AP/CB)	2
02	Notebook (Asus)	M2400	1
03	Notebook (CLEVO)	M545G	1

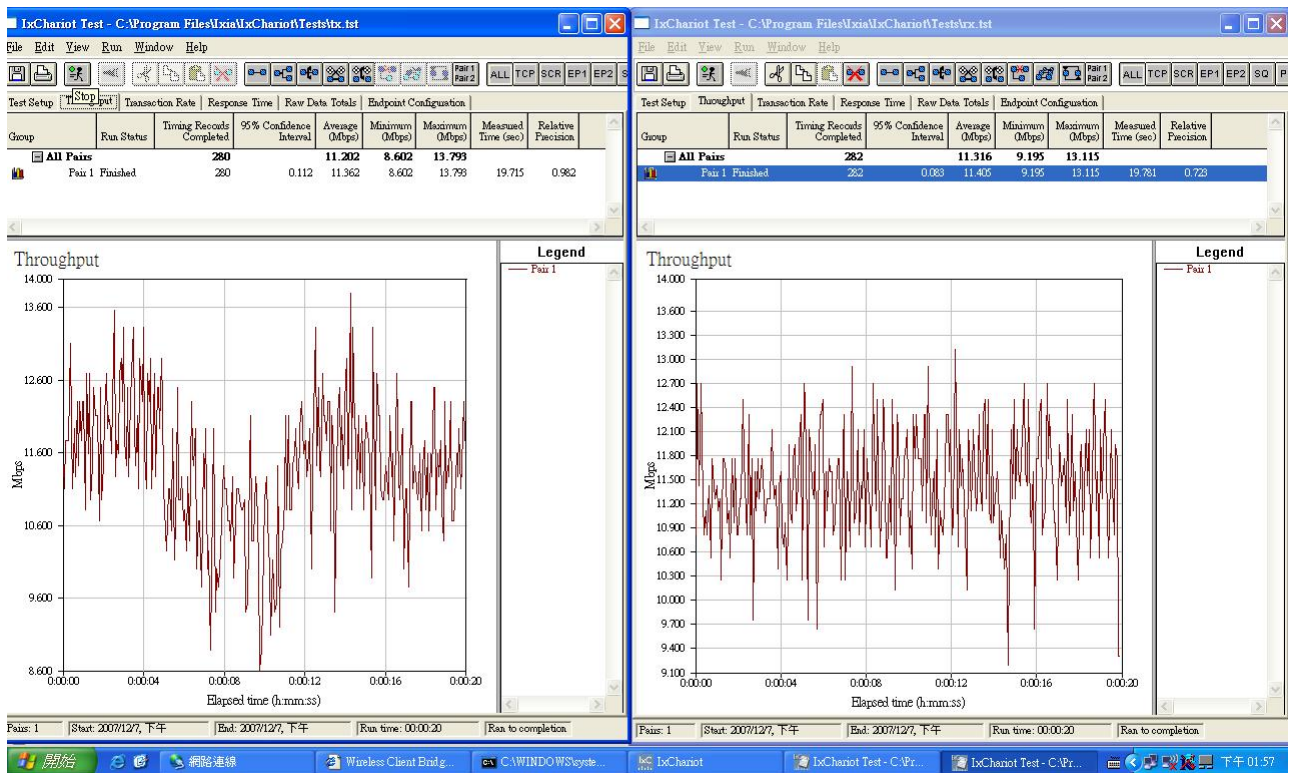
4.3. Software List

Item	Description	Model	Unit
01	IxChariot (NetIQ)	Version 5.4	1
02	Windows XP Professional	SP2	1
03	AP/CB Software Version	1.41.05	1

4.4. Performance Test Result

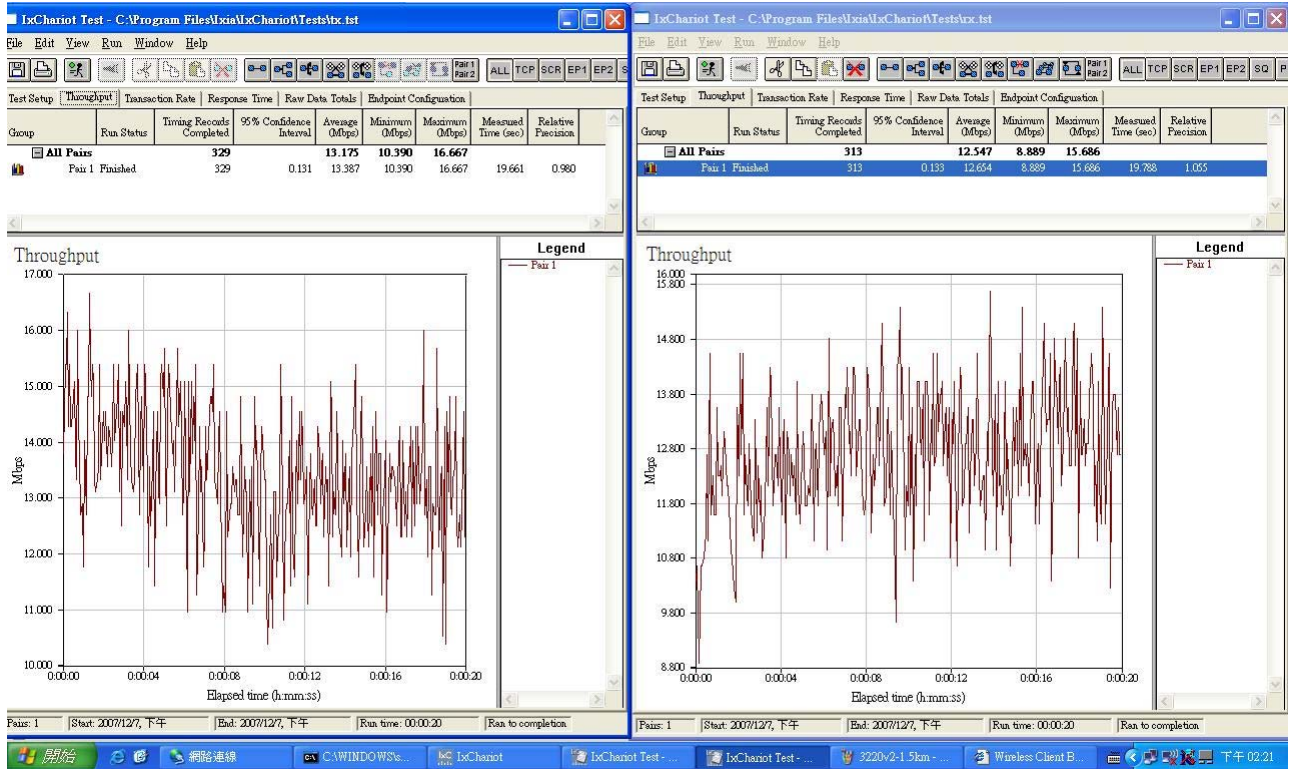
4.4.1. O-P1 Ranges Test Result

Mode-b/g	NONE (Mbps) Ack(Default)	
Channel	TX (AVG)	RX (AVG)
(CH1) 2412 MHz	11.202	11.316



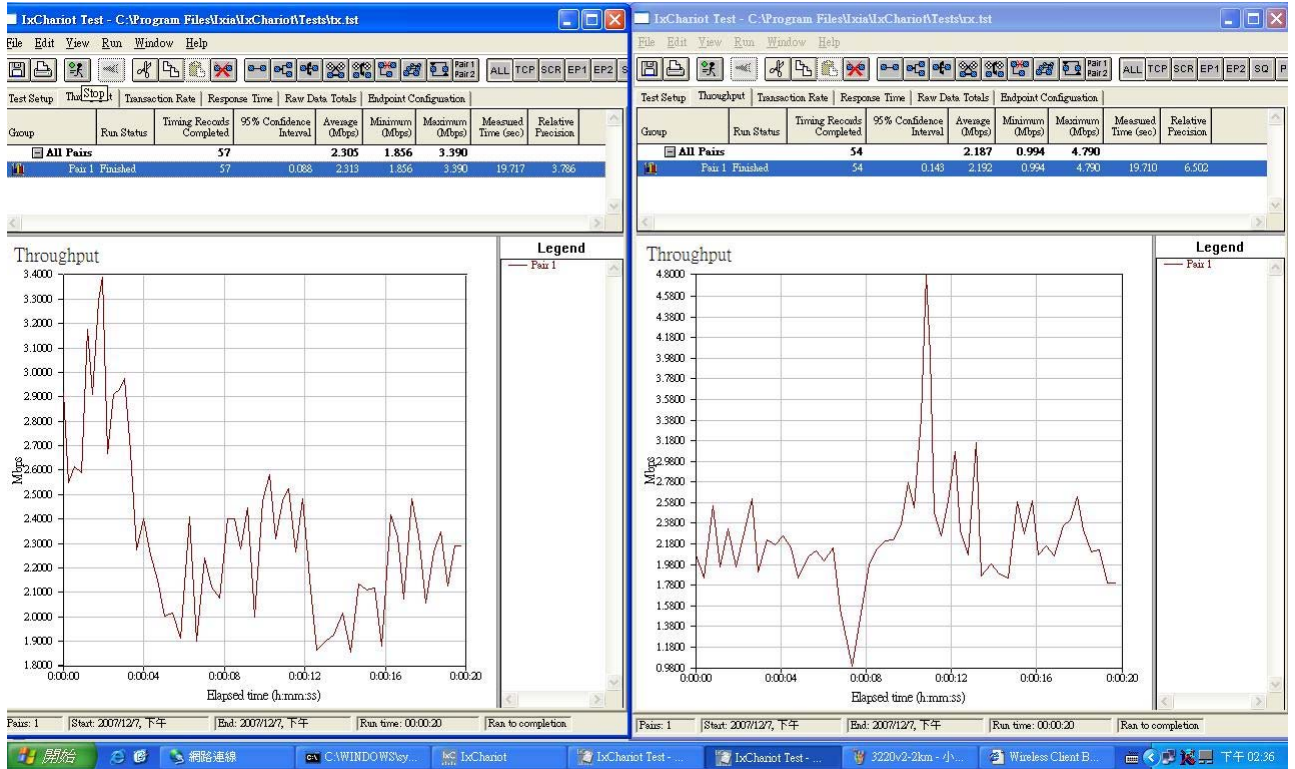
4.4.2. O-P2 Ranges Test Result

Mode-b/g	NONE (Mbps) Ack(Default)	
Channel	TX (AVG)	RX (AVG)
(CH1) 2412 MHz	13.175	12.547



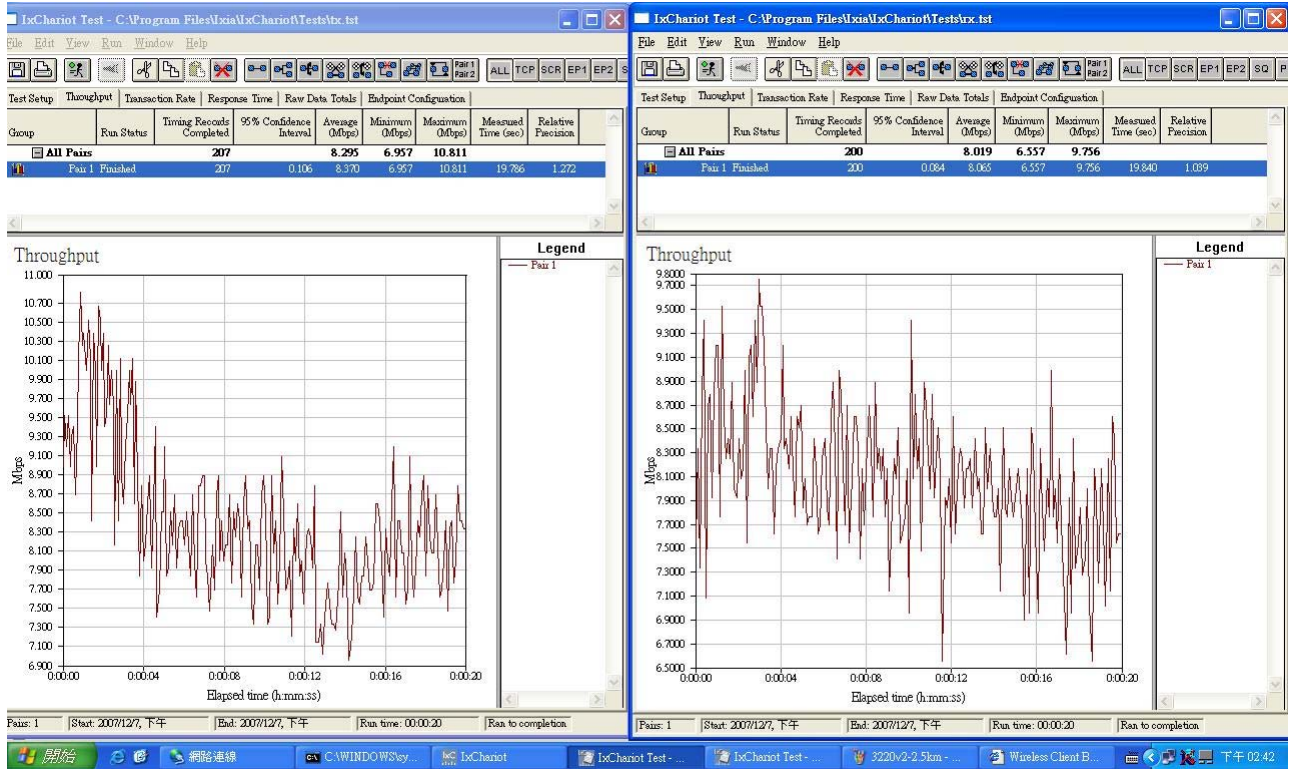
4.4.3. O-P3 Ranges Test Result

Mode-b/g	NONE (Mbps) Ack(50)	
Channel	TX (AVG)	RX (AVG)
(CH1) 2412 MHz	2.305	2.187



4.4.4. O-P4 Ranges Test Result

Mode-b/g	NONE (Mbps) Ack(60)	
Channel	TX (AVG)	RX (AVG)
(CH1) 2412 MHz	8.295	8.019



4.4.5. O-P5 Ranges Test Result

Mode-b/g	NONE (Mbps) Ack(80)	
Channel	TX (AVG)	RX (AVG)
(CH1) 2412 MHz	1.481	2.164

