



# LevelOne

## Broadband Router

FBR-1402TX

FBR-1403TX

---

---

# User's Guide

---

---

# Table of Contents

---

<b>CHAPTER 1 INTRODUCTION .....</b>	<b>1</b>
<b>LevelOne Broadband Router Features .....</b>	<b>1</b>
<b>Package Contents .....</b>	<b>3</b>
<b>Physical Details .....</b>	<b>4</b>
<b>CHAPTER 2 INSTALLATION.....</b>	<b>7</b>
<b>Requirements.....</b>	<b>7</b>
<b>Procedure .....</b>	<b>7</b>
<b>CHAPTER 3 SETUP .....</b>	<b>9</b>
<b>Overview .....</b>	<b>9</b>
<b>Configuration Program .....</b>	<b>10</b>
<b>Setup Wizard .....</b>	<b>12</b>
<b>LAN Screen.....</b>	<b>15</b>
<b>Password Screen.....</b>	<b>17</b>
<b>CHAPTER 4 PC CONFIGURATION .....</b>	<b>18</b>
<b>Overview .....</b>	<b>18</b>
<b>Windows Clients.....</b>	<b>18</b>
<b>Printer Setup for Windows (FBR-1403TX only).....</b>	<b>30</b>
<b>Macintosh Clients.....</b>	<b>36</b>
<b>Linux Clients.....</b>	<b>36</b>
<b>Other Unix Systems.....</b>	<b>37</b>
<b>CHAPTER 5 OPERATION AND STATUS .....</b>	<b>38</b>
<b>Operation .....</b>	<b>38</b>
<b>Status Screen.....</b>	<b>38</b>
<b>Connection Status - PPPoE .....</b>	<b>40</b>
<b>Connection Status - PPTP .....</b>	<b>42</b>
<b>Connection Status - Telstra Big Pond.....</b>	<b>43</b>
<b>Connection Details - SingTel RAS .....</b>	<b>44</b>
<b>Connection Details - Fixed/Dynamic IP Address .....</b>	<b>46</b>
<b>CHAPTER 6 ADVANCED FEATURES .....</b>	<b>48</b>
<b>Overview .....</b>	<b>48</b>
<b>Advanced Menu Screen .....</b>	<b>48</b>
<b>Advanced Internet Screen .....</b>	<b>49</b>
<b>Access Control .....</b>	<b>53</b>
<b>Remote Management .....</b>	<b>60</b>
<b>Virtual Servers.....</b>	<b>61</b>
<b>Dynamic DNS (Domain Name Server) .....</b>	<b>64</b>
<b>Firmware Upgrade.....</b>	<b>66</b>
<b>CHAPTER 7 ADVANCED CONFIGURATION.....</b>	<b>67</b>
<b>Overview .....</b>	<b>67</b>
<b>PC Database.....</b>	<b>68</b>
<b>Options .....</b>	<b>72</b>
<b>Security.....</b>	<b>74</b>
<b>Logs.....</b>	<b>76</b>
<b>Printer Port (FBR-1403TX only) .....</b>	<b>78</b>
<b>MAC Address .....</b>	<b>79</b>
<b>Routing .....</b>	<b>80</b>

<b>APPENDIX A TROUBLESHOOTING .....</b>	<b>84</b>
<b>Overview .....</b>	<b>84</b>
<b>General Problems.....</b>	<b>84</b>
<b>Internet Access.....</b>	<b>84</b>
<b>Printing (FBR-1403TX).....</b>	<b>85</b>
<b>APPENDIX B SPECIFICATIONS.....</b>	<b>88</b>
<b>FBR-1402TX.....</b>	<b>88</b>
<b>FBR-1403TX.....</b>	<b>89</b>

P/N 9560J300A0

Copyright © 2002. All Rights Reserved.

Document Version: 1.2

All trademarks and trade names are the properties of their respective owners.

# Chapter 1

## Introduction

# 1

*This Chapter provides an overview of the LevelOne Broadband Router's features and capabilities.*

Congratulations on the purchase of your new LevelOne Broadband Router. The LevelOne Broadband Router is a multi-function device providing the following services:

- **Shared Broadband Internet Access** for all LAN users.
- **4-Port Switching Hub** for 10BaseT or 100BaseT connections.
- **Network Printer** - LAN users can share the printer attached to the LevelOne Broadband Router.

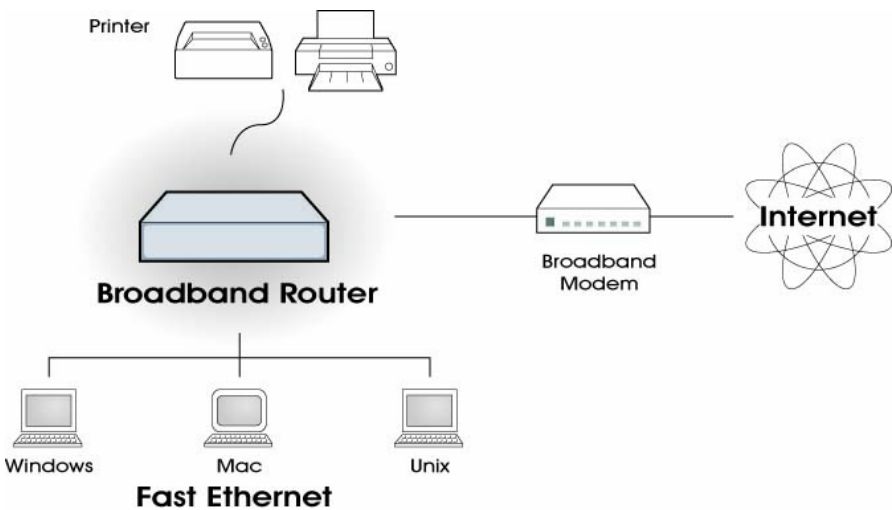


Figure 1: LevelOne Broadband Router

## LevelOne Broadband Router Features

The LevelOne Broadband Router incorporates many advanced features, carefully designed to provide sophisticated functions while being easy to use.

### Internet Access Features

- **Shared Internet Access.** All users on the LAN or WLAN can access the Internet through the LevelOne Broadband Router, using only a single external IP Address. The local (invalid) IP Addresses are hidden from external sources. This process is called NAT (Network Address Translation).
- **DSL & Cable Modem Support.** The LevelOne Broadband Router has a 10BaseT Ethernet port for connecting a DSL or Cable Modem. All popular DSL and Cable Modems are supported. SingTel RAS and Big Pond (Australia) login support is also included.
- **PPPoE, PPTP, SingTel RAS and Telstra Big Pond Support.** The Internet (WAN port) connection supports PPPoE (PPP over Ethernet), PPTP (Peer-to-Peer Tunneling Protocol), SingTel RAS and Telstra Big Pond (Australia), as well as "Direct Connection" type services.

- **Fixed or Dynamic IP Address.** On the Internet (WAN port) connection, the LevelOne Broadband Router supports both Dynamic IP Address (IP Address is allocated on connection) and Fixed IP Address.

## Advanced Internet Functions

- **Communication Applications.** Support for Internet communication applications, such as interactive Games, Telephony, and Conferencing applications, which are often difficult to use when behind a Firewall, is included.
- **Special Internet Applications.** Applications which use non-standard connections or port numbers are normally blocked by the Firewall. The ability to define and allow such applications is provided, to enable such applications to be used normally.
- **Virtual Servers.** This feature allows Internet users to access Internet servers on your LAN. The required setup is quick and easy.
- **DMZ.** One (1) PC on your local LAN can be configured to allow unrestricted 2-way communication with Servers or individual users on the Internet. This provides the ability to run programs which are incompatible with Firewalls.
- **URL Filter.** Use the URL Filter to block access to undesirable Web sites by LAN users.
- **Internet Access Log.** See which Internet connections have been made.
- **VPN Pass through Support.** PCs with VPN (Virtual Private Networking) software using PPTP, L2TP and IPSec are transparently supported - no configuration is required.

## LAN Features

- **4-Port Switching Hub.** The LevelOne Broadband Router incorporates a 4-port 10/100BaseT switching hub, making it easy to create or extend your LAN.
- **DHCP Server Support.** Dynamic Host Configuration Protocol provides a dynamic IP address to PCs and other devices upon request. The LevelOne Broadband Router can act as a DHCP Server for devices on your local LAN and WLAN.
- **Multi Segment LAN Support.** LANs containing one or more segments are supported, via the LevelOne Broadband Router's RIP (Routing Information Protocol) support and built-in static routing table.

## Network Printer ( FBR-1403TX only)

- **Shared Printer (Network Printer).** A printer connected to the LevelOne Broadband Router's parallel port can be shared by all PCs on the LAN or WLAN.
- **Multiple OS Support.** Clients may use any of the following operating systems:
  - Windows 95/98/ME
  - Windows NT 4.0, 2000, or XP.
  - Unix
- **Multi-protocol Support.** The following printing methods are supported:
  - Windows peer-to-peer printing over TCP/IP, using the supplied port driver.
  - Windows LPD printing, using a Windows Server running NT 4.0 or Windows 2000 Server. In this situation, no software needs to be installed on the client PCs.
  - Unix LPD printing. No additional software needs to be installed.

## Configuration & Management

- **Easy Setup.** Use your WEB browser from anywhere on the LAN or WLAN for configuration.
- **Remote Management.** The LevelOne Broadband Router can be managed from any PC on your LAN. And, if the Internet connection exists, it can also (optionally) be configured via the Internet.
- **UPnP Support.** UPnP (Universal Plug and Play) allows automatic discovery and configuration of the LevelOne Broadband Router. UPnP is supported by Windows ME, XP, or later.

## Security Features

- **Password - protected Configuration.** Optional password protection is provided to prevent unauthorized users from modifying the configuration data and settings.
- **NAT Protection.** An intrinsic side effect of NAT (Network Address Translation) technology is that by allowing all LAN users to share a single IP address, the location and even the existence of each PC is hidden. From the external viewpoint, there is no network, only a single device - the LevelOne Broadband Router.
- **Stateful Inspection Firewall.** All incoming data packets are monitored and all incoming server requests are filtered, thus protecting your network from malicious attacks from external sources.
- **Protection against DoS attacks.** DoS (Denial of Service) attacks can flood your Internet connection with invalid packets and connection requests, using so much bandwidth and so many resources that Internet access becomes unavailable. The LevelOne Broadband Router incorporates protection against DoS attacks.

## Package Contents

The following items should be included:

- The LevelOne Broadband Router Unit
- Power Adapter
- Quick Installation Guide
- CD-ROM containing the on-line manual. For the FBR-1403TX, the Print Port Driver for Windows is also included on the CD-ROM.

If any of the above items are damaged or missing, please contact your dealer immediately.

## Physical Details

### Front Panel - FBR-1402TX



Figure 2: Front Panel - FBR-1402TX

- Power**      **On** - Power on.  
                  **Off** - No power.
- Status (Red)**      **On** - Error condition.  
                          **Off** - Normal operation.  
                          **Blinking** - This LED blinks during start up.
- LAN**              For each port, there are 2 LEDs
- **Link/Act**
    - **On** - Corresponding LAN (hub) port is active.
    - **Off** - No active connection on the corresponding LAN (hub) port.
    - **Flashing** - Data is being transmitted or received via the corresponding LAN (hub) port.
  - **100**
    - **On** - Corresponding LAN (hub) port is using 100BaseT.
    - **Off** - Corresponding LAN (hub) port connection is using 10BaseT, or no active connection.
- WAN**              **On** - Connection to the modem attached to the WAN (Internet) port is established.  
                          **Flashing** - Data is being transmitted or received via the WAN port.

## Front Panel - FBR-1403TX



**Figure 3: Front Panel - FBR-1403TX**

<b>Power</b>	<p><b>On</b> - Power on.</p> <p><b>Off</b> - No power.</p>
<b>Status (Red)</b>	<p><b>On</b> - Error condition.</p> <p><b>Off</b> - Normal operation.</p> <p><b>Blinking</b> - This LED blinks during start up.</p>
<b>LAN</b>	<p>For each port, there are 2 LEDs</p> <ul style="list-style-type: none"> <li>• <b>Link/Act</b> <ul style="list-style-type: none"> <li>• <b>On</b> - Corresponding LAN (hub) port is active.</li> <li>• <b>Off</b> - No active connection on the corresponding LAN (hub) port.</li> <li>• <b>Flashing</b> - Data is being transmitted or received via the corresponding LAN (hub) port.</li> </ul> </li> <li>• <b>100</b> <ul style="list-style-type: none"> <li>• <b>On</b> - Corresponding LAN (hub) port is using 100BaseT.</li> <li>• <b>Off</b> - Corresponding LAN (hub) port connection is using 10BaseT, or no active connection.</li> </ul> </li> </ul>
<b>WAN</b>	<p><b>On</b> - Connection to the modem attached to the WAN (Internet) port is established.</p> <p><b>Flashing</b> - Data is being transmitted or received via the WAN port.</p>
<b>Print Act</b>	<p><b>On</b> - Connection to printer established.</p> <p><b>Off</b> - No connection to printer; printer is Off or Off-line.</p> <p><b>Flashing</b> - Data is being transmitted to the printer.</p>
<b>Print Error</b>	<p><b>On</b> - Printer error detected.</p> <p><b>Off</b> - No printer error detected.</p>



## FBR-1402TX / FBR-1403TX Rear Panel

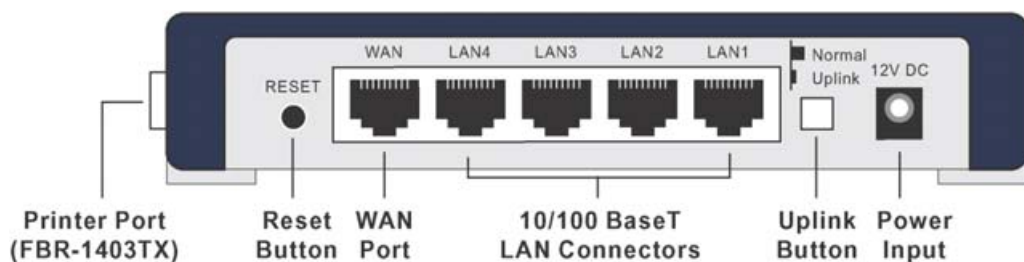


Figure 4: FBR-1402TX / FBR-1403TX Rear Panel

### Printer Port (FBR-1403TX only)

Standard parallel printer port. If you wish to share a printer, connect it here.

### Reset Button

This button has three (3) functions:

- **Reboot.** When pressed and released, the LevelOne Broadband Router will reboot (restart).
- **Diagnostic print-out.** If held down for 3 seconds, a diagnostic print-out will be sent to the attached printer.
  - Ensure the printer is ready.
  - Both *Print* LEDs will flash simultaneously during the diagnostic printing.
- **Clear All Data.** This button can also be used to clear ALL data and restore ALL settings to the factory default values.

#### To Clear All Data and restore the factory default values:

1. Power Off.
2. Hold the Reset Button down while you Power On.
3. Keep holding the Reset Button for a few seconds, until the RED LED has flashed TWICE.
4. Release the Reset Button. The LevelOne Broadband Router is now using the factory default values.

### WAN port (10/100BaseT)

Connect the DSL or Cable Modem here. If your modem came with a cable, use the supplied cable. Otherwise, use a standard LAN cable.

### 10/100BaseT LAN connections

Use standard LAN cables (RJ45 connectors) to connect your PCs to these ports.

### Uplink Button

This button allows LAN port 1 to be used as an Uplink port for connecting directly to another hub.

- When depressed (in), then the "LAN 1" port becomes an "Uplink" port, and must be connected to a normal port on another Hub.
- If this button is extended (out), then the "LAN 1" port acts as a normal LAN port.

### Power input

Connect the supplied power adapter here.

# Chapter 2

## Installation

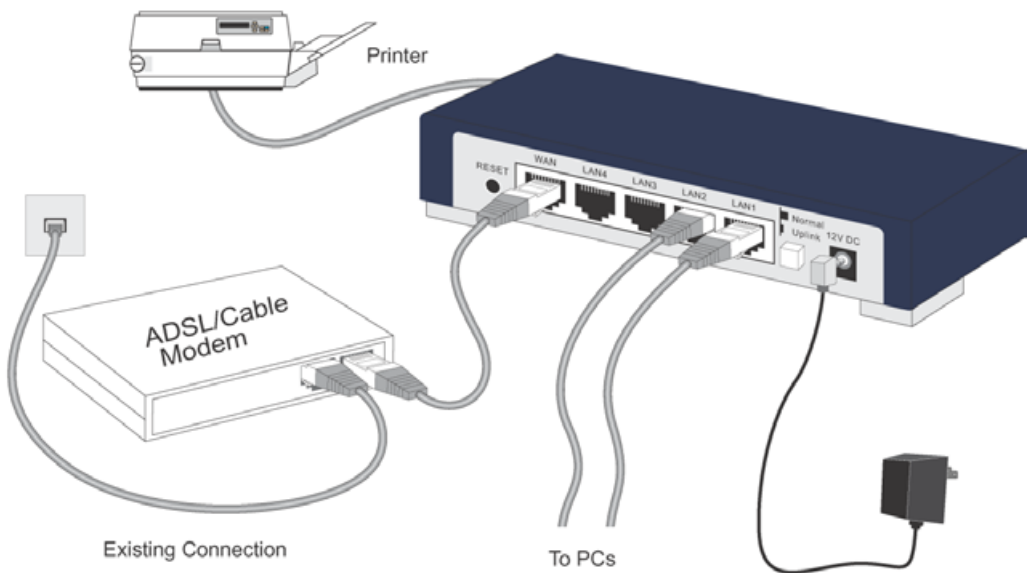
# 2

*This Chapter covers the physical installation of the LevelOne Broadband Router.*

### Requirements

- Network cables. Use standard 10/100BaseT network (UTP) cables with RJ45 connectors.
- TCP/IP protocol must be installed on all PCs.
- For Internet Access, an Internet Access account with an ISP, and either of a DSL or Cable modem (for WAN port usage)
- For shared access to the attached printer, the following clients are supported:
  - Windows 95/98/ME
  - Windows NT 4.0, 2000 or XP
  - Unix (LPD printing)

### Procedure



**Figure 5: Installation Diagram**

#### 1. Choose an Installation Site

Select a suitable place on the network to install the LevelOne Broadband Router. Ensure the LevelOne Broadband Router and the DSL/Cable modem are powered OFF.

#### 2. Connect LAN Cables

- Use standard LAN cables to connect PCs to the Switching Hub ports on the LevelOne Broadband Router. Both 10BaseT and 100BaseT connections can be used simultaneously.
- If required, you can connect the "LAN1" port to another Hub:

- Depress the "Uplink" button beside the "LAN1" port.
- Use a standard LAN cable to connect the "LAN1" port to a standard port on the other hub.

### 3. Connect WAN Cable

Connect the DSL or Cable modem to the WAN port on the LevelOne Broadband Router. Use the cable supplied with your DSL/Cable modem. If no cable was supplied, use a standard cable.

### 4. Connect Printer Cable (FBR-1403TX only)

Use a standard parallel printer cable to connect your printer to the Printer port on the LevelOne Broadband Router.

### 5. Power Up

- Power on the Cable or DSL modem.
- Connect the supplied power adapter to the LevelOne Broadband Router and power up. Use only the power adapter provided. Using a different one may cause hardware damage.

### 6. Check the LEDs

- The *Power* LED should be ON.
- The *Status* LED should flash, then turn Off. If it stays on, there is a hardware error.
- For each LAN (PC) connection, the LAN *Link/Act* LED should be ON (provided the PC is also ON.)
- The *WAN* LED should be ON.
- For the FBR-1403TX, the *Print Act* LED should be ON if a printer is connected and Online.

For more information, refer Physical Details in Chapter 1.

# Chapter 3

## Setup



*This Chapter provides Setup details of the LevelOne Broadband Router.*

### Overview

This chapter describes the setup procedure for:

- Internet Access
- LAN configuration
- Assigning a Password to protect the configuration data.

PCs on your local LAN may also require configuration. For details, see *Chapter 4 - PC Configuration*.

Other configuration may also be required, depending on which features and functions of the LevelOne Broadband Router you wish to use. Use the table below to locate detailed instructions for the required functions.

To Do this:	Refer to:
Configure PCs on your LAN.	Chapter 4: PC Configuration
Check LevelOne Broadband Router operation and Status.	Chapter 5: Operation and Status
Use any of the following Internet features: <ul style="list-style-type: none"><li>• Special Applications</li><li>• DMZ</li><li>• Virtual Servers</li><li>• Dynamic DNS</li><li>• Remote Management</li><li>• Firmware Upgrade</li></ul>	Chapter 6: Advanced Features
Use any of the following Advanced Configuration settings: <ul style="list-style-type: none"><li>• PC Database</li><li>• Options (Backup DNS, TFTP, UPnP, Firewall)</li><li>• Printer Port setup (for Linux/Unix only)</li><li>• Routing (RIP and static Routing)</li></ul>	Chapter 7 Advanced Configuration



**Note!**

**Where use of a certain feature requires that PCs or other LAN devices be configured, this is also explained in the relevant chapter.**

## Configuration Program

The LevelOne Broadband Router contains an HTTP server. This enables you to connect to it, and configure it, using your Web Browser. **Your Browser must support JavaScript.** The configuration program has been tested on the following browsers:

- Netscape V4.08 or later
- Internet Explorer V4 or later

## Preparation

Before attempting to configure the LevelOne Broadband Router, please ensure that:

- Your PC can establish a physical connection to the LevelOne Broadband Router. The PC and the LevelOne Broadband Router must be directly connected (using the Hub ports on the LevelOne Broadband Router) or on the same LAN segment.
- The LevelOne Broadband Router must be installed and powered ON.
- If the LevelOne Broadband Router's default IP Address (192.168.0.1) is already used by another device, the other device must be turned OFF until the LevelOne Broadband Router is allocated a new IP Address during configuration.

## Using UPnP

If your Windows system supports UPnP, an icon for the LevelOne Broadband Router will appear in the system tray, notifying you that a new network device has been found, and offering to create a new desktop shortcut to the newly-discovered device.

- Unless you intend to change the IP Address of the LevelOne Broadband Router, you can accept the desktop shortcut.
- Whether you accept the desktop shortcut or not, you can always find UPnP devices in *My Network Places* (previously called *Network Neighborhood*).
- Double - click the icon for the LevelOne Broadband Router (either on the Desktop, or in *My Network Places*) to start the configuration. Refer to the following section *Setup Wizard* for details of the initial configuration process.

## Using your Web Browser

To establish a connection from your PC to the LevelOne Broadband Router:

1. After installing the LevelOne Broadband Router in your LAN, start your PC. If your PC is already running, restart it.
2. Start your WEB browser.
3. In the *Address* box, enter "HTTP://" and the IP Address of the LevelOne Broadband Router, as in this example, which uses the LevelOne Broadband Router's default IP Address:

HTTP://192.168.0.1

**If you can't connect**

If the LevelOne Broadband Router does not respond, check the following:

- The LevelOne Broadband Router is properly installed, LAN connection is OK, and it is powered ON. You can test the connection by using the "Ping" command:
  - Open the MS-DOS window or command prompt window.
  - Enter the command:  
`ping 192.168.0.1`  
If no response is received, either the connection is not working, or your PC's IP address is not compatible with the LevelOne Broadband Router's IP Address. (See next item.)
- If your PC is using a fixed IP Address, its IP Address must be within the range 192.168.0.2 to 192.168.0.254 to be compatible with the LevelOne Broadband Router's default IP Address of 192.168.0.1. Also, the *Network Mask* must be set to 255.255.255.0. See *Chapter 4 - PC Configuration* for details on checking your PC's TCP/IP settings.
- Ensure that your PC and the LevelOne Broadband Router are on the same network segment. (If you don't have a router, this must be the case.)

## Setup Wizard

The first time you connect to the LevelOne Broadband Router, the Setup Wizard will run automatically. (The Setup Wizard will also run if the LevelOne Broadband Router's default settings are restored.)

1. Step through the Wizard until finished.
  - You need to know the type of Internet connection service used by your ISP. Check the data supplied by your ISP.
  - The common connection types are explained in the tables below.
2. On the final screen of the Wizard, run the test and check that an Internet connection can be established.
3. If the connection test fails:
  - Check your data, the Cable/DSL modem, and all connections.
  - Check that you have entered all data correctly.
  - If using a Cable modem, your ISP may have recorded the MAC (physical) address of your PC. Run the Wizard, and on the *Cable Modem* screen, use the "Clone MAC address" button to copy the MAC address from your PC to the Broadband Router.

## Common Connection Types

### Cable Modems

Type	Details	ISP Data required
Dynamic IP Address	Your IP Address is allocated automatically, when you connect to you ISP.	Usually, none. However, some ISP's may require you to use a particular Hostname, Domain name, or MAC (physical) address.
Static (Fixed) IP Address	Your ISP allocates a permanent IP Address to you.	IP Address allocated to you. Some ISP's may also require you to use a particular Hostname, Domain name, or MAC (physical) address.

### DSL Modems

Type	Details	ISP Data required
Dynamic IP Address	Your IP Address is allocated automatically, when you connect to you ISP.	None.
Static (Fixed) IP Address	Your ISP allocates a permanent IP Address to you.	IP Address allocated to you.
PPPoE	You connect to the ISP only when required. The IP address is usually allocated automatically.	User name and password.
PPTP	Mainly used in Europe.	<ul style="list-style-type: none"> <li>• PPTP Server IP Address.</li> </ul>

	You connect to the ISP only when required. The IP address is usually allocated automatically, but may be Static (Fixed).	<ul style="list-style-type: none"> <li>• User name and password.</li> <li>• IP Address allocated to you, if Static (Fixed).</li> </ul>
--	--	--

### Other Modems (e.g. Broadband Wireless)

Type	Details	ISP Data required
Dynamic IP Address	Your IP Address is allocated automatically, when you connect to you ISP.	None.
Static (Fixed) IP Address	Your ISP allocates a permanent IP Address to you.	IP Address allocated to you.

### Big Pond (Australia)

For this connection method, the following data is required:

- User Name
- Password
- Big Pond Server IP address

### SingTel RAS

For this connection method, the following data is required:

- User Name
- Password
- RAS Plan



## Home Screen

After finishing the Setup Wizard, you will see the *Home* screen. When you connect in future, you will see this screen when you connect. An example screen is shown below.

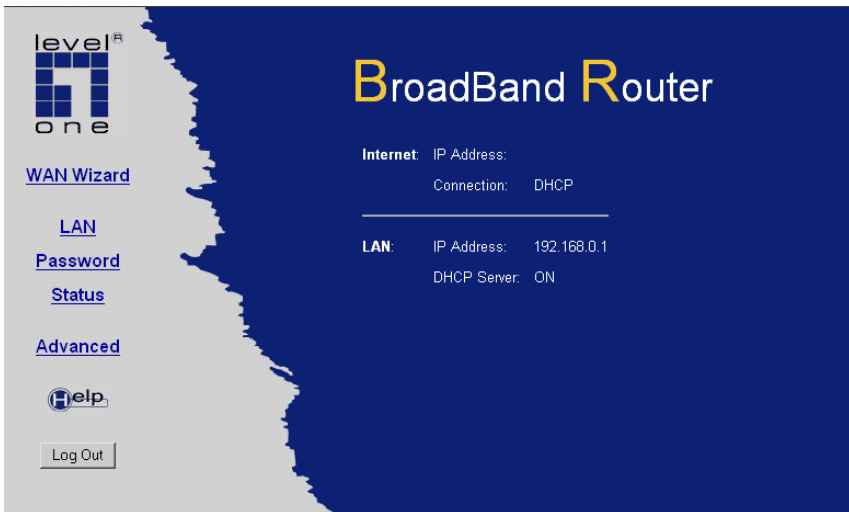


Figure 6: Home Screen

## Navigation & Data Input

- Use the menu bar on the top of the screen, and the "Back" button on your Browser, for navigation.
- Changing to another screen without clicking "Save" does NOT save any changes you may have made. You must "Save" before changing screens or your data will be ignored.



**Note!**

On each screen, clicking the "Help" button will display help for that screen.

From any help screen, you can access the list of all help files (help index).

## LAN Screen

Use the *LAN* link on the main menu to reach the *LAN* screen. An example screen is shown below.

Figure 7: LAN Screen

### Data - LAN Screen

TCP/IP	
<b>IP Address</b>	IP address for the LevelOne Broadband Router, as seen from the local LAN. Use the default value unless the address is already in use or your LAN is using a different IP address range. In the latter case, enter an unused IP Address from within the range used by your LAN.
<b>Subnet Mask</b>	The default value 255.255.255.0 is standard for small (class "C") networks. For other networks, use the Subnet Mask for the LAN segment to which the LevelOne Broadband Router is attached (the same value as the PCs on that LAN segment).
<b>DHCP Server</b>	<ul style="list-style-type: none"> <li>If Enabled, the LevelOne Broadband Router will allocate IP Addresses to PCs (DHCP clients) on your LAN when they start up. The default (and recommended) value is Enabled.</li> <li>If you are already using a DHCP Server, this setting must be Disabled, and the existing DHCP server must be re-configured to treat the LevelOne Broadband Router as the default Gateway. See the following section for further details.</li> <li>The <b>Start IP Address</b> and <b>Finish IP Address</b> fields set the values used by the DHCP server when allocating IP Addresses to DHCP clients. This range also determines the number of DHCP clients supported.</li> </ul> <p>See the following section for further details on using DHCP.</p>

Buttons	
Save	Save the data on screen.
Cancel	The "Cancel" button will discard any data you have entered and reload the file from the LevelOne Broadband Router.

## DHCP

### What DHCP Does

A DHCP (Dynamic Host Configuration Protocol) **Server** allocates a valid IP address to a DHCP **Client** (PC or device) upon request.

- The client request is made when the client device starts up (boots).
- The DHCP Server provides the *Gateway* and *DNS* addresses to the client, as well as allocating an IP Address.
- The LevelOne Broadband Router can act as a **DHCP server**.
- Windows 95/98/ME and other non-Server versions of Windows will act as a DHCP **client**. This is the default Windows setting for the TCP/IP network protocol. However, Windows uses the term *Obtain an IP Address automatically* instead of "DHCP Client".
- You must NOT have two (2) or more DHCP Servers on the same LAN segment. (If your LAN does not have other Routers, this means there must only be one (1) DHCP Server on your LAN.)

### Using the LevelOne Broadband Router's DHCP Server

This is the default setting. The DHCP Server settings are on the **LAN** screen. On this screen, you can:

- Enable or Disable the LevelOne Broadband Router's *DHCP Server* function.
- Set the range of IP Addresses allocated to PCs by the DHCP Server function.



**You can assign Fixed IP Addresses to some devices while using DHCP, provided that the Fixed IP Addresses are NOT within the range used by the DHCP Server.**

### Using another DHCP Server

You can only use one (1) DHCP Server per LAN segment. If you wish to use another DHCP Server, rather than the LevelOne Broadband Router's, the following procedure is required.

1. Disable the DHCP Server feature in the LevelOne Broadband Router. This setting is on the LAN screen.
2. Configure the DHCP Server to provide the LevelOne Broadband Router's IP Address as the *Default Gateway*.

### To Configure your PCs to use DHCP

This is the default setting for TCP/IP under Windows 95/98/ME.

See *Chapter 4 - Client Configuration* for the procedure to check these settings.

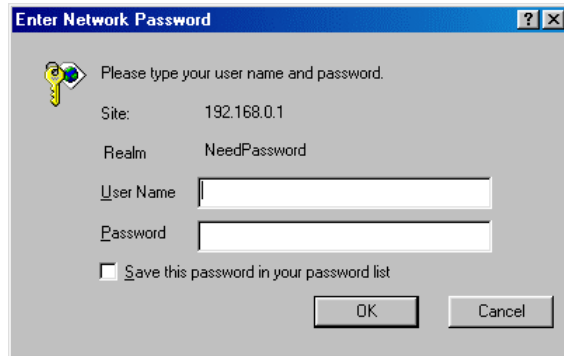
## Password Screen

The password screen allows you to assign a password to the LevelOne Broadband Router.



**Figure 8: Password Screen**

Once you have assigned a password to the LevelOne Broadband Router (on the *Password* screen above) you will be prompted for the password when you connect, as shown below. (If no password has been set, this dialog will not appear.)



**Figure 9: Password Dialog**

- Leave the "User Name" blank.
- Enter the password for the LevelOne Broadband Router, as set on the *Password* screen above.

# Chapter 4

## PC Configuration



*This Chapter details the PC Configuration required on the local ("Internal") LAN.*

### Overview

For each PC, the following may need to be configured:

- TCP/IP network settings
- Internet Access configuration
- Printer configuration

### Windows Clients

This section describes how to configure Windows clients for:

- Internet access via the LevelOne Broadband Router
- Sharing the Printer connected to the LevelOne Broadband Router.

The first step is to check the PC's TCP/IP settings.

The LevelOne Broadband Router uses the TCP/IP network protocol for all functions, so it is essential that the TCP/IP protocol be installed and configured on each PC.

### TCP/IP Settings - Overview

**If using the default LevelOne Broadband Router settings, and the default Windows TCP/IP settings, no changes need to be made.**

- By default, the LevelOne Broadband Router will act as a DHCP Server, automatically providing a suitable IP Address (and related information) to each PC when the PC boots.
- For all non-Server versions of Windows, the default TCP/IP setting is to act as a DHCP client.

**If using a Fixed (specified) IP address, the following changes are required:**

- The *Gateway* must be set to the IP address of the LevelOne Broadband Router
- The *DNS* should be set to the address provided by your ISP.

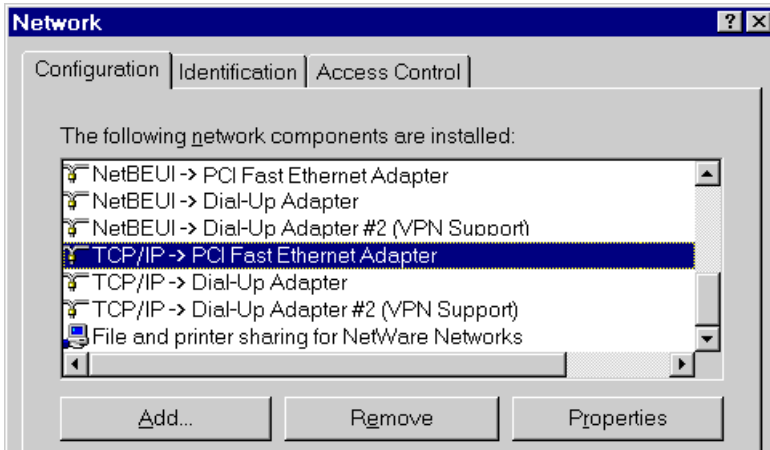


**Note!**

**If your LAN has a Router, the LAN Administrator must re-configure the Router itself. Refer to *Chapter 8 - Advanced Setup* for details.**

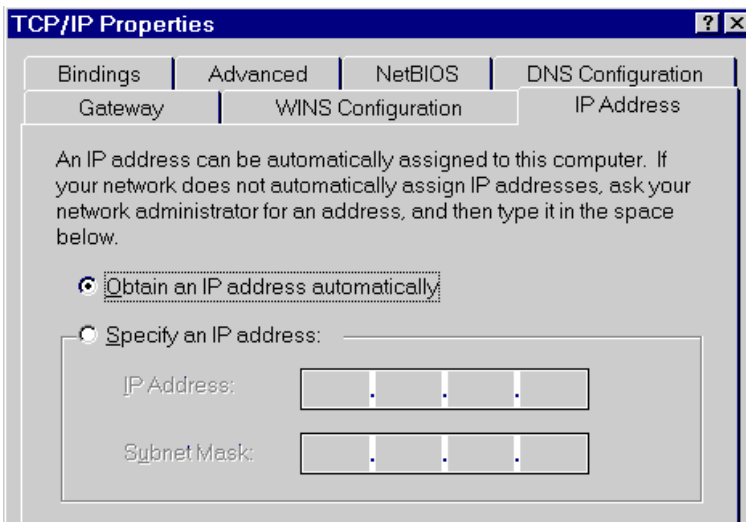
## Checking TCP/IP Settings - Windows 9x/ME:

1. Select *Control Panel - Network*. You should see a screen like the following:



**Figure 10: Network Configuration**

2. Select the *TCP/IP* protocol for your network card.
3. Click on the *Properties* button. You should then see a screen like the following.



**Figure 11: IP Address (Win 95)**

Ensure your TCP/IP settings are correct, as follows:

### Using DHCP

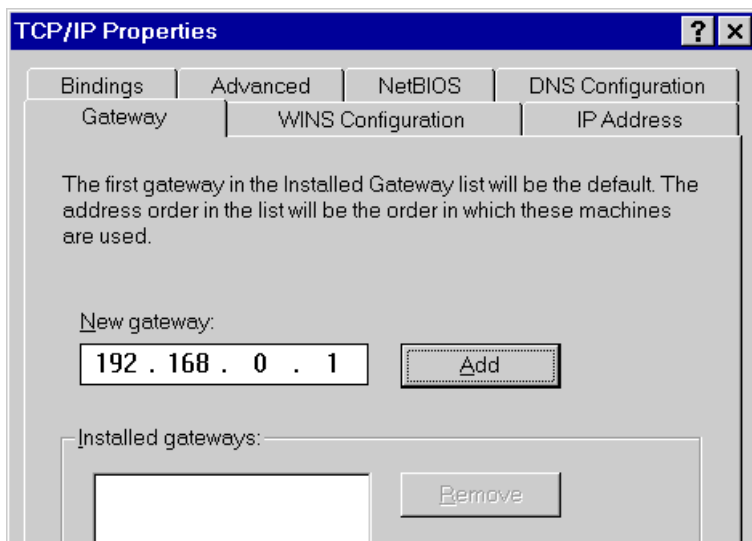
To use DHCP, select the radio button *Obtain an IP Address automatically*. This is the default Windows setting. **Using this is recommended.** By default, the LevelOne Broadband Router will act as a DHCP Server.

Restart your PC to ensure it obtains an IP Address from the LevelOne Broadband Router.

### Using "Specify an IP Address"

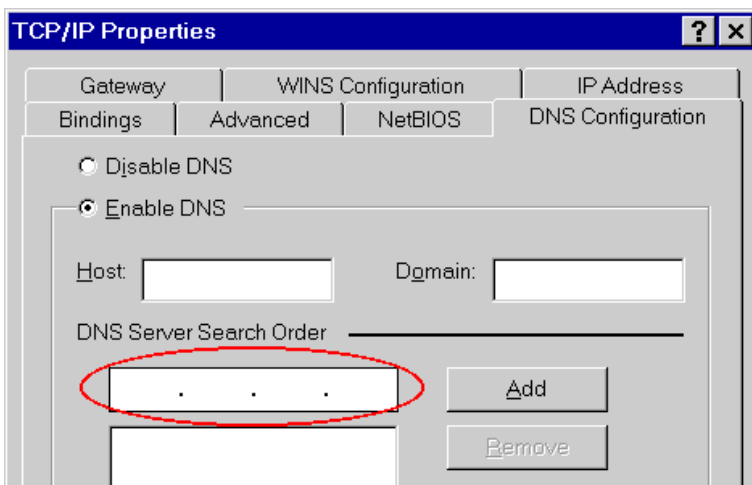
If your PC is already configured, check with your network administrator before making the following changes:

- On the *Gateway* tab, enter the LevelOne Broadband Router's IP address in the *New Gateway* field and click *Add*, as shown below. Your LAN administrator can advise you of the IP Address they assigned to the LevelOne Broadband Router.



**Figure 12: Gateway Tab (Win 95/98)**

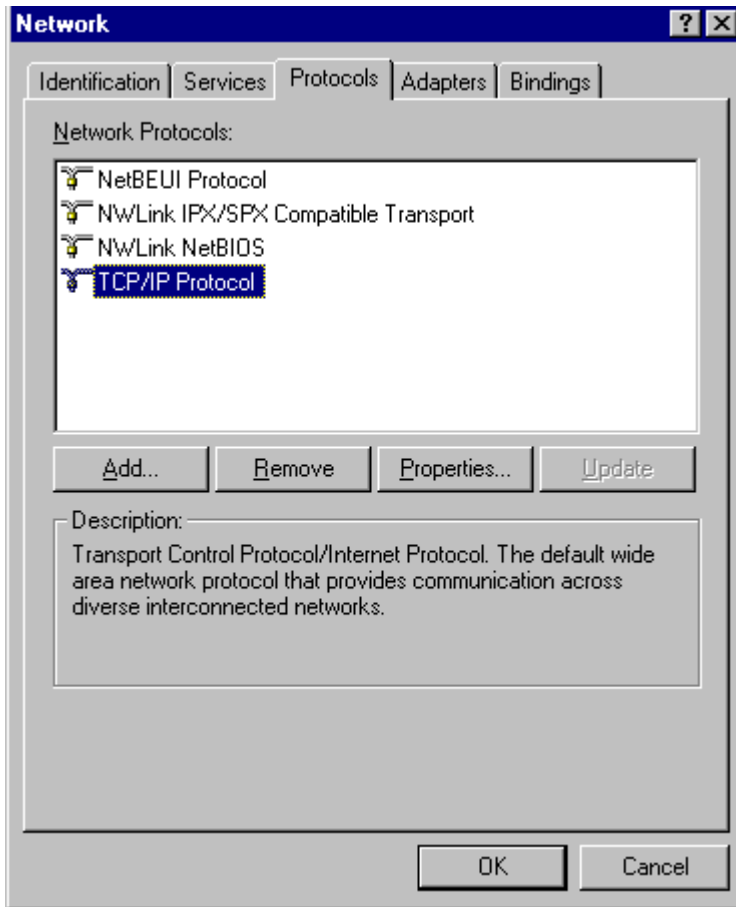
- On the *DNS Configuration* tab, ensure *Enable DNS* is selected. If the *DNS Server Search Order* list is empty, enter the DNS address provided by your ISP in the fields beside the *Add* button, then click *Add*.



**Figure 13: DNS Tab (Win 95/98)**

## Checking TCP/IP Settings - Windows NT4.0

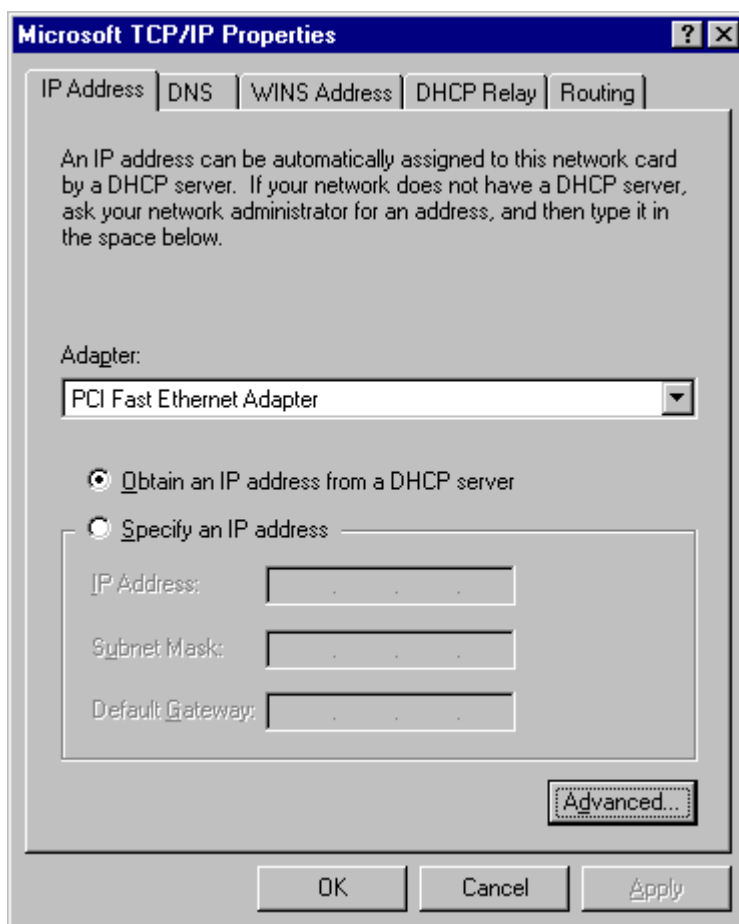
1. Select *Control Panel - Network*, and, on the *Protocols* tab, select the TCP/IP protocol, as shown below.



**Figure 14: Windows NT4.0 - TCP/IP**

2. Click the *Properties* button to see a screen like the one below.





**Figure 15: Windows NT4.0 - IP Address**

3. Select the network card for your LAN.
4. Select the appropriate radio button - *Obtain an IP address from a DHCP Server* or *Specify an IP Address*, as explained below.

### **Obtain an IP address from a DHCP Server**

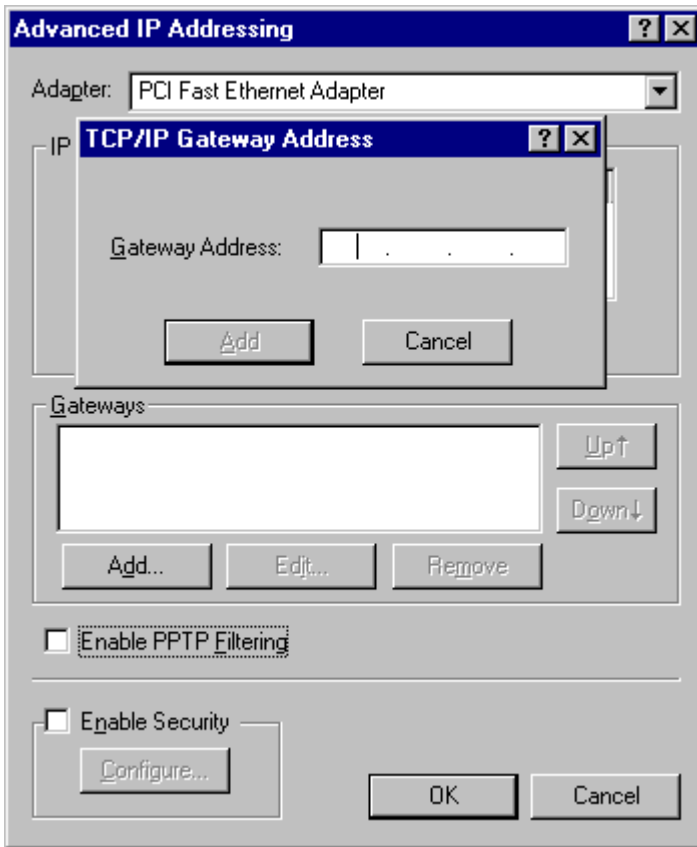
This is the default Windows setting. **Using this is recommended.** By default, the LevelOne Broadband Router will act as a DHCP Server.

Restart your PC to ensure it obtains an IP Address from the LevelOne Broadband Router.

### **Specify an IP Address**

If your PC is already configured, check with your network administrator before making the following changes.

1. The *Default Gateway* must be set to the IP address of the LevelOne Broadband Router. To set this:
  - Click the *Advanced* button on the screen above.
  - On the following screen, click the *Add* button in the *Gateways* panel, and enter the LevelOne Broadband Router's IP address, as shown in Figure 16 below.
  - If necessary, use the *Up* button to make the LevelOne Broadband Router the first entry in the *Gateways* list.



**Figure 16 - Windows NT4.0 - Add Gateway**

2. The DNS should be set to the address provided by your ISP, as follows:
  - Click the DNS tab.
  - On the DNS screen, shown below, click the *Add* button (under *DNS Service Search Order*), and enter the DNS provided by your ISP.

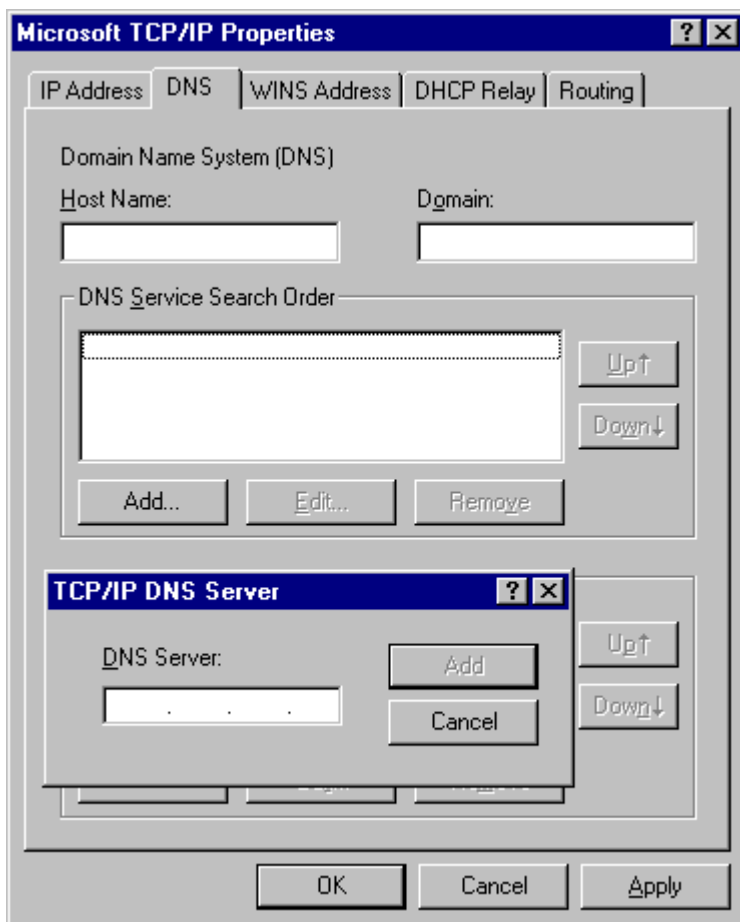
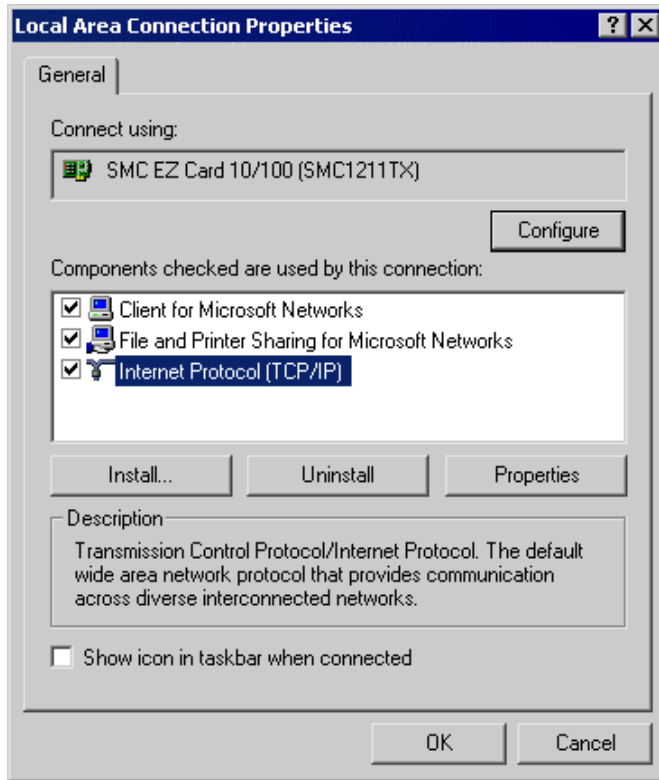


Figure 17: Windows NT4.0 - DNS

## Checking TCP/IP Settings - Windows 2000:

1. Select *Control Panel - Network and Dial-up Connection*.
2. Right - click the *Local Area Connection* icon and select *Properties*. You should see a screen like the following:



**Figure 18: Network Configuration (Win 2000)**

3. Select the *TCP/IP* protocol for your network card.
4. Click on the *Properties* button. You should then see a screen like the following.

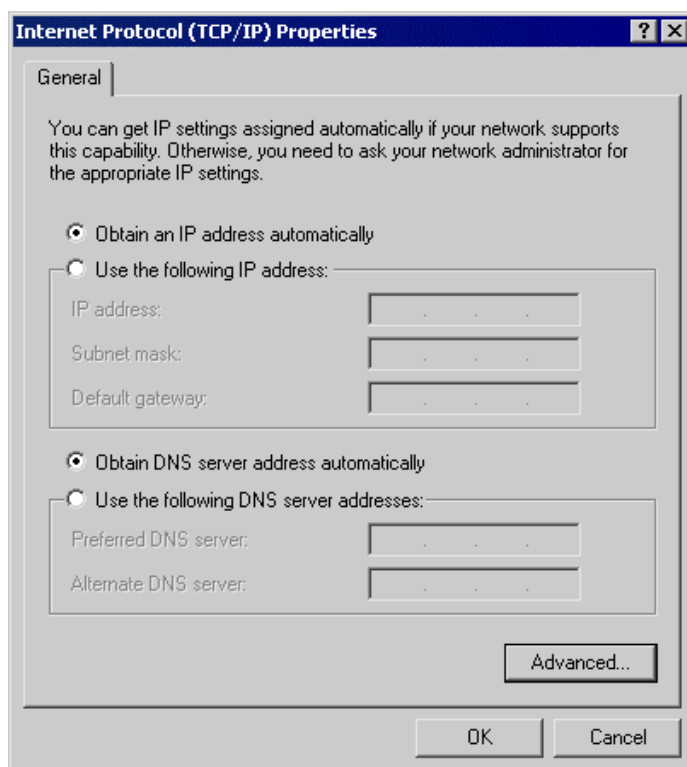


Figure 19: TCP/IP Properties (Win 2000)

5. Ensure your TCP/IP settings are correct, as described below.

### Using DHCP

To use DHCP, select the radio button *Obtain an IP Address automatically*. This is the default Windows setting. **Using this is recommended.** By default, the LevelOne Broadband Router will act as a DHCP Server.

Restart your PC to ensure it obtains an IP Address from the LevelOne Broadband Router.

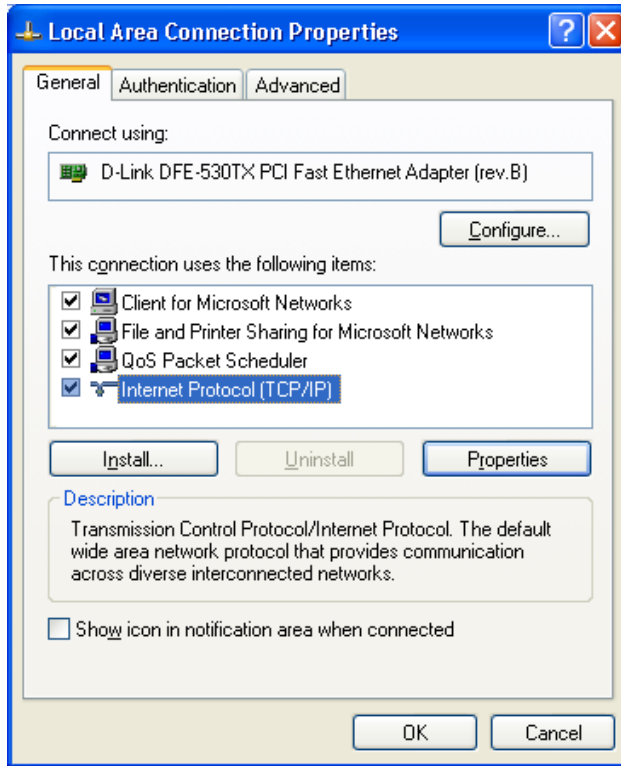
### Using a fixed IP Address ("Use the following IP Address")

If your PC is already configured, check with your network administrator before making the following changes.

- Enter the LevelOne Broadband Router's IP address in the *Default gateway* field and click *OK*. (Your LAN administrator can advise you of the IP Address they assigned to the LevelOne Broadband Router.)
- If the *DNS Server* fields are empty, select *Use the following DNS server addresses*, and enter the DNS address or addresses provided by your ISP, then click *OK*.

## Checking TCP/IP Settings - Windows XP

1. Select *Control Panel - Network Connection*.
2. Right click the *Local Area Connection* and choose *Properties*. You should see a screen like the following:



**Figure 20: Network Configuration (Windows XP)**

3. Select the *TCP/IP* protocol for your network card.
4. Click on the *Properties* button. You should then see a screen like the following.

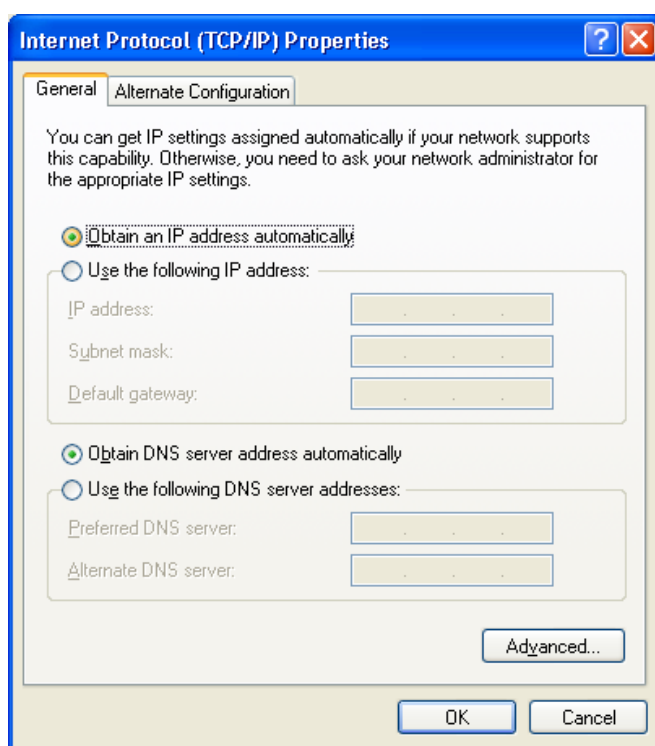


Figure 21: TCP/IP Properties (Windows XP)

5. Ensure your TCP/IP settings are correct.

## Using DHCP

To use DHCP, select the radio button *Obtain an IP Address automatically*. This is the default Windows setting. **Using this is recommended.** By default, the LevelOne Broadband Router will act as a DHCP Server.

Restart your PC to ensure it obtains an IP Address from the LevelOne Broadband Router.

## Using a fixed IP Address ("Use the following IP Address")

If your PC is already configured, check with your network administrator before making the following changes.

- In the *Default gateway* field, enter the LevelOne Broadband Router's IP address and click *OK*. Your LAN administrator can advise you of the IP Address they assigned to the LevelOne Broadband Router.
- If the *DNS Server* fields are empty, select *Use the following DNS server addresses*, and enter the DNS address or addresses provided by your ISP, then click *OK*.

## Internet Access

To configure your PCs to use the LevelOne Broadband Router for Internet access:

- Ensure that the DSL modem, Cable modem, or other permanent connection is functional.
- Use the following procedure to configure your Browser to access the Internet via the LAN, rather than by a Dial-up connection.

### For Windows 9x/ME/2000

1. Select *Start Menu - Settings - Control Panel - Internet Options*.
2. Select the *Connection* tab, and click the *Setup* button.
3. Select "I want to set up my Internet connection manually, or I want to connect through a local area network (LAN)" and click *Next*.
4. Select "I connect through a local area network (LAN)" and click *Next*.
5. Ensure all of the boxes on the following Local area network Internet Configuration screen are **unchecked**.
6. Check the "No" option when prompted "Do you want to set up an Internet mail account now?".
7. Click *Finish* to close the Internet Connection Wizard.  
Setup is now completed.

### For Windows XP

1. Select *Start Menu - Control Panel - Network and Internet Connections*.
2. Select *Set up or change your Internet Connection*.
3. Select the *Connection* tab, and click the *Setup* button.
4. Cancel the pop-up "Location Information" screen.
5. Click *Next* on the "New Connection Wizard" screen.
6. Select "Connect to the Internet" and click *Next*.
7. Select "Set up my connection manually" and click *Next*.
8. Check "Connect using a broadband connection that is always on" and click *Next*.
9. Click *Finish* to close the New Connection Wizard.  
Setup is now completed.

### Accessing AOL

To access AOL (America On Line) through the LevelOne Broadband Router, the *AOL for Windows* software must be configured to use TCP/IP network access, rather than a dial-up connection. The configuration process is as follows:

- Start the *AOL for Windows* communication software. Ensure that it is Version 2.5, 3.0 or later. This procedure will not work with earlier versions.
- Click the *Setup* button.
- Select *Create Location*, and change the location name from "New Locality" to "LevelOne Broadband Router".
- Click *Edit Location*. Select *TCP/IP* for the *Network* field. (Leave the *Phone Number* blank.)
- Click *Save*, then *OK*.  
Configuration is now complete.
- Before clicking "Sign On", always ensure that you are using the "LevelOne Broadband Router" location.



## Printer Setup for Windows (FBR-1403TX only)

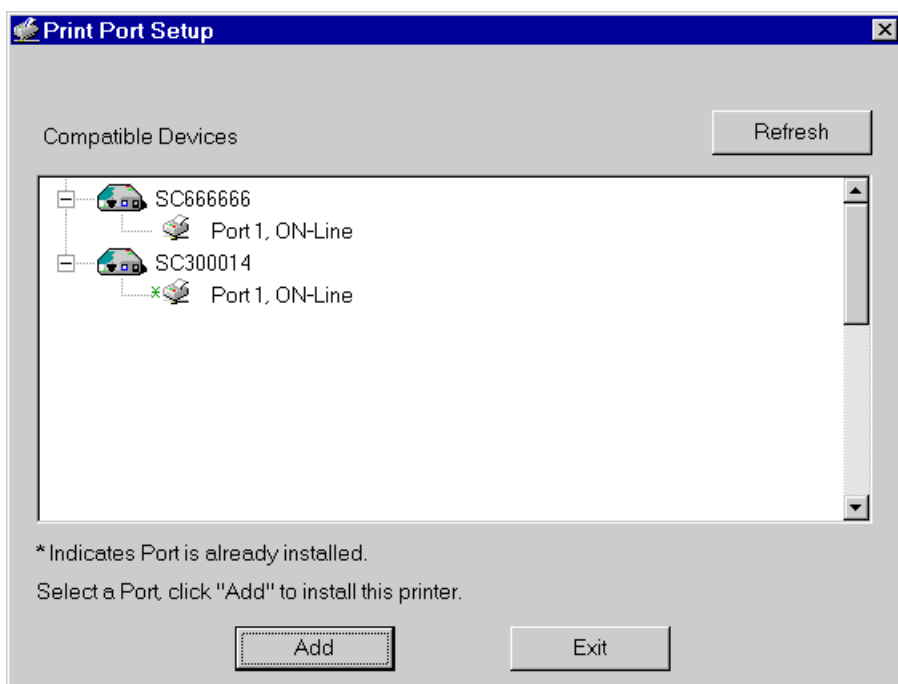
The FBR-1403TX LevelOne Broadband Router provides printing support for 2 methods for printing from Windows:

- **Print Port Driver.** After installing the Print Port Driver, Windows users can print directly to the LevelOne Broadband Router. Print jobs are spooled (queued) on each PC. The supplied Print Port Driver supports Windows 95/98, Windows ME, Windows NT4.0, Windows 2000 and Windows XP.
- **LPD/LPR Printing.** If using Windows NT 4.0 Server or Windows 2000 Server, LPD/LPR printing can be used. No software needs to be installed on either the Windows Server or each client PC. Print jobs will be spooled (queued) on the Windows Server, and can be managed using the standard Windows Server tools.

### Print Port Driver Setup

The following procedure is for all versions of Windows (95/98/ME, NT4.0, 2000, XP). The Windows "Add Printer" screens will vary depending on your version of Windows, but the procedure is the same:

1. Insert the supplied CD-ROM into your drive. If the setup program does not start automatically, run SETUP.EXE in the root folder.
2. At the *Select Components* screen, select the **Print Port Driver** option.
3. Follow the prompts to complete the installation.
4. The *Print Port Setup* will then run, and the following screen will be displayed.

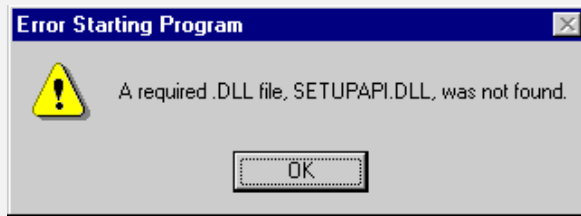


**Figure 22: Print Port Setup**

5. Select the desired device and port, and then click the "Add" button.



**Under Windows 95, if you see the following error message, either install Internet Explorer 4 or later, or follow the procedure in the "Trouble Shooting - Printing" section of Appendix A.**



6. A pop-up message will inform you if the port has been created successfully, and then the Windows *Add Printer* wizard will start.
  - Select the correct Printer Manufacturer and Model, or use the "Have Disk" option if appropriate.
  - If desired, change the Printer name so it indicates the device used (e.g. HP2100 on SCA43600)
  - If prompted about Sharing, do NOT enable Sharing.
7. Installation is now complete. You can now print using this printer.
  - To install additional Printers (on different devices), repeat steps 6 and 7.
  - Use the **Start** menu to run this program in future. The default installation is *Start - Programs - Broadband Internet Router - Add Port*.

## Management

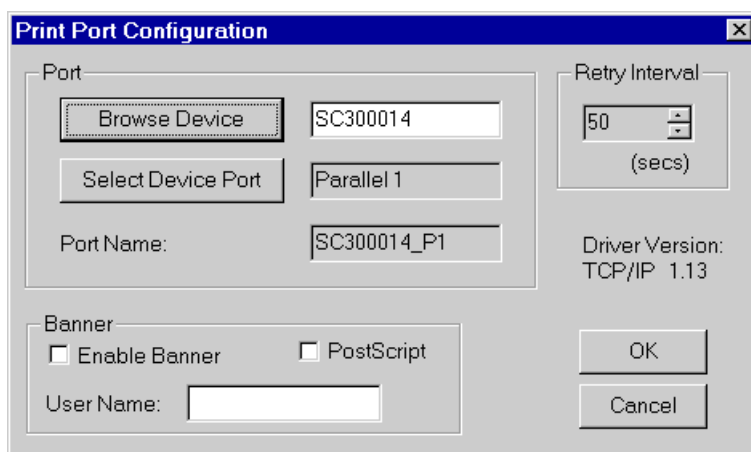
- Print jobs can be managed like any Windows printer. Open the *Printers* folder (*Start - Settings - Printers*) and double-click any printer to see the current print jobs.
- If the printer attached to the LevelOne Broadband Router is changed, just run this program again, and select the correct printer.
- To delete a port created by this setup program, use the Windows *Delete Port* facility:
  - Right-click any printer in the *Printers* folder, and select *Properties*.
  - Locate the *Delete Port* button. This button is on the *Details* or *Ports* tab, depending on your version of Windows.
- If the LevelOne Broadband Router's IP Address is changed, and you can no longer print, delete the port (see procedure above) and re-install it.

## Port Options

The options for the *Print Port Driver* are accessed via the Windows *Port Settings* button.

Use *Start - Settings - Printers* to open the Printers folder, then right-click the Printer, and select *Properties*. The *Port Settings* button is on the *Details* or *Port* tab, depending on your version of Windows.

An example screen is shown below:



**Figure 23: Print Port Configuration**

Items shown on this screen are as follows:

<b>Port</b>	<p>If desired, click <i>Browse</i> to select a different device. (The <i>Select Device Port</i> button is provided to allow this software to work with multi-port models.)</p> <p>The <i>Port Name</i> is shown in the Printer's <i>Properties</i>.</p>
<b>Banner</b>	<p>Check this option to print a banner page before each print job.</p> <ul style="list-style-type: none"> <li>• If using a PostScript Printer, check the <i>PostScript</i> box.</li> <li>• The <i>User Name</i> will be printed on the banner page.</li> </ul>
<b>Retry Interval</b>	<p>Sets how often Windows will poll the LevelOne Broadband Router to establish a connection when the printer is busy. Increase this value if you get too many warning messages.</p>

## LPD/LPR Printing

LPD/LPR printing can be used with Windows NT 4.0 Server or Windows 2000. No software needs to be installed on client PCs.

### Windows NT 4.0 Server Configuration

To use LPD printing, **Microsoft TCP/IP Printing** must be installed and enabled. This can be checked using *Start-Settings-Control Panel-Network - Services*.

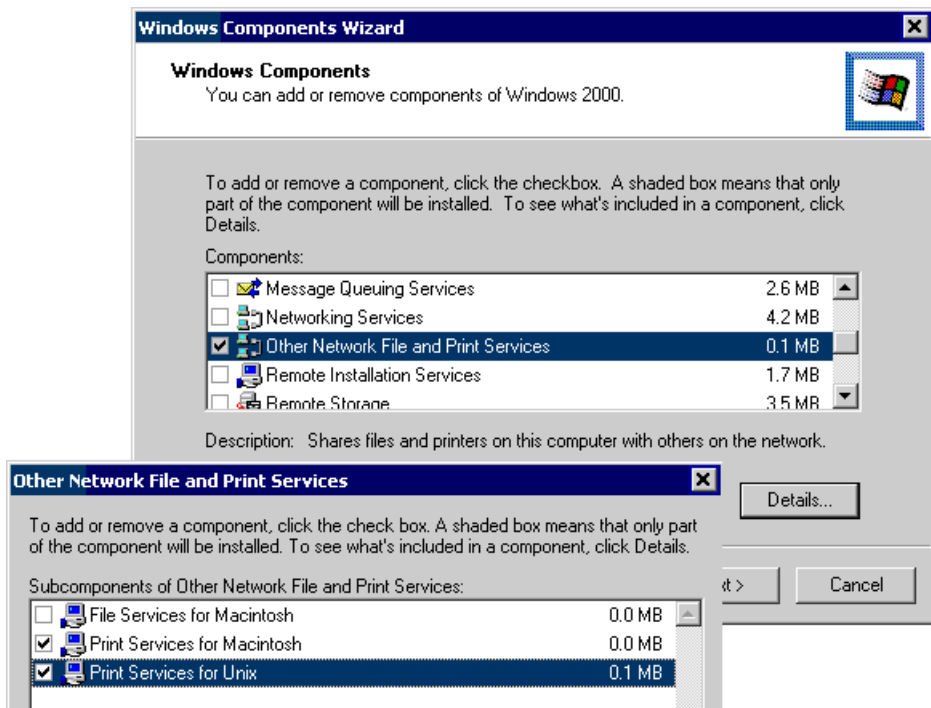
**To install LPD printing using the LevelOne Broadband Router, follow this procedure:**

1. Go to *Start-Settings-Printer* and invoke the **Add Printer** wizard.
2. When prompted with "This printer will be managed by..", select **My Computer** and click Next.
3. Select **Add Port**, then select **LPR Port** and click **New Port**.
4. In the Dialog requesting *Name of Address of server providing lpd*, enter the IP address of the LevelOne Broadband Router.
5. For *Name of printer or print queue on that server*, enter L1
6. Click *OK*. When returned to the Printer Ports window, simply select *Close* and then install your printer driver as usual.
7. When prompted whether or not the printer will be shared, select the **Sharing** radio button.
8. In the *Shared* dialog box, enter the shared printer name. The shared name is how other users will see this printer. You should advise client PCs of the Server name and this printer name.
9. Click *OK* to save and exit.

## Windows 2000 Server Configuration

The *LPD/LPR Port* is not enabled by default. To enable it, use this procedure:

1. In Control Panel, select Add/Remove Programs, then Windows Components.
2. Select *Other Network File and Print Services*, then click the *Details* button.

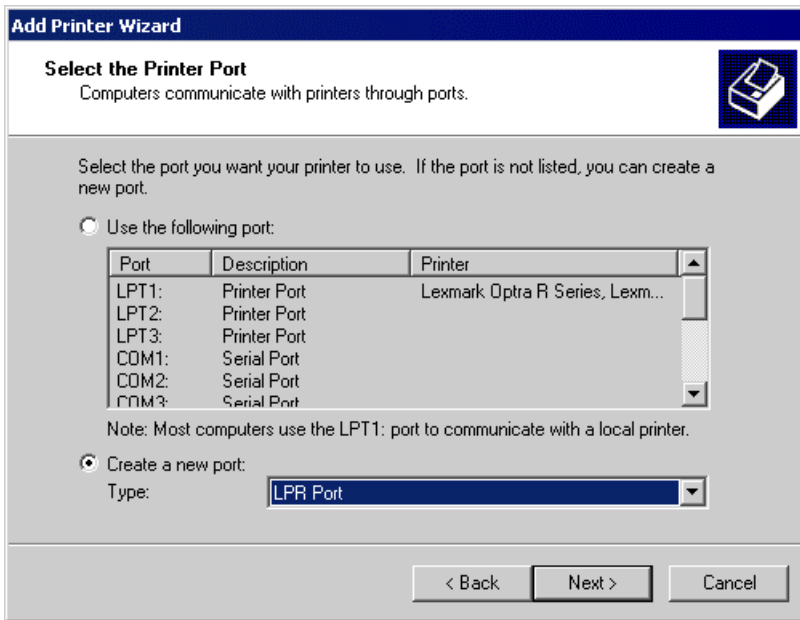


**Figure 24: Adding LPD/LPR Port (Win 2000)**

3. Enable *Print Services for Unix*, and click OK.
4. Click *Next* and complete the Wizard.

### Adding the Printer

1. Open your *Printers* folder, and start the *Add Printer* Wizard.
2. When prompted, select *Local Printer*.
3. On the *Select the Printer Port* screen, select *LPR Port*, as shown below. Click *Next* to continue.



**Figure 25: Windows 2000: Select Port**

4. In the Dialog requesting *Name or Address of server providing lpd*, enter the IP address of the LevelOne Broadband Router.
5. For *Name of printer or print queue on that server*, enter L1
6. Click OK, and then *Next*, and continue the Wizard.
7. At the *Select Sharing* screen, select the Radio Button for *Share As*, and enter the shared printer name. The shared name is how other users will see this printer. You should advise client PCs of the Server name and this printer name.
8. Complete the *Add Printer* wizard.

## Client PC Setup for LPD/LPR Printing

After configuring the Windows Server, client PCs on the LAN can install the new printer.

The following procedure is for Windows 95/98/ME, Windows NT4.0, and Windows 2000 workstation.

1. Open your *Printers* folder, and start the *Add Printer* Wizard.
2. When prompted, select *Network Printer*
3. When prompted for *Network Path or Queue Name*, click the *Browse* button, and locate the Server and Printer which your Network Administrator advised you to use.
4. Click OK, then *Next*.
5. Select the correct printer Manufacturer and Model, as advised by your Network Administrator, and click *Next*.
6. Follow the prompts to complete the Wizard.
7. The new printer will be listed with any other installed printers, and may be selected when printing from any Windows application.

## Macintosh Clients

From your Macintosh, you can access the Internet via the LevelOne Broadband Router. The procedure is as follows.

1. Open the TCP/IP Control Panel.
2. Select *Ethernet* from the *Connect via* pop-up menu.
3. Select *Using DHCP Server* from the *Configure* pop-up menu. The DHCP Client ID field can be left blank.
4. Close the TCP/IP panel, saving your settings.

### Note:

If using manually assigned IP addresses instead of DHCP, the required changes are:

- Set the *Router Address* field to the LevelOne Broadband Router's IP Address.
- Ensure your DNS settings are correct.

## Linux Clients

To access the Internet via the LevelOne Broadband Router, it is only necessary to set the LevelOne Broadband Router as the "Gateway".

**Ensure you are logged in as "root" before attempting any changes.**

### Fixed IP Address

By default, most Unix installations use a fixed IP Address. If you wish to continue using a fixed IP Address, make the following changes to your configuration.

- Set your "Default Gateway" to the IP Address of the LevelOne Broadband Router.
- Ensure your DNS (Name server) settings are correct.

### To act as a DHCP Client (recommended)

The procedure below may vary according to your version of Linux and X -windows shell.

1. Start your X Windows client.
2. Select *Control Panel - Network*
3. Select the "Interface" entry for your Network card. Normally, this will be called "eth0".
4. Click the *Edit* button, set the "protocol" to "DHCP", and save this data.
5. To apply your changes
  - Use the "Deactivate" and "Activate" buttons, if available.
  - OR, restart your system.

## Printing Setup on Linux (FBR-1403TX only)

The LevelOne Broadband Router supports LPD Printing on Linux.

- The LevelOne Broadband Router supports 3 "Logical Printers" under LPD. To configure the "Logical Printers" on the LevelOne Broadband Router, refer to **Printer Port** in Chapter 7.
  - The procedure to install a LPD printer is detailed below, but may vary according to your version of Linux and X -windows shell.
1. In your X Windows shell, select *Control Panel*, then *Printer Configuration*.

2. Select *Add*. For the printer type, select *Remote Unix (lpd) Queue*.
3. Use the following data to complete the resulting dialog.

Field	Data	Example
<b>Name</b>	Enter a name for this printer	gw_prn
<b>Spool Directory</b>	<i>/var/spool/lpd/printer_name</i> Where <i>printer_name</i> is the "Name" entry above.	<i>/var/spool/lpd/gw_prn</i>
<b>File Limit</b>	Enter a suitable number.	0 (no limit)
<b>Remote Host</b>	LevelOne Broadband Router's IP address	192.168.0.1
	<b>Note:</b> If you have made a host file entry, you can use the name from the host file instead of the IP Address.	
<b>Remote Queue</b>	<i>Ln</i> Where <i>n</i> is the Logical Printer number (L1, L2, L3). Logical Printers can be configured on the LevelOne Broadband Router's <i>Options- Printer Port</i> screen.	L1

4. Save this data, and exit the Printer Configuration. Configuration is now completed, and the printer is now available for use.

## Other Unix Systems

To access the Internet via the LevelOne Broadband Router:

- Ensure the "Gateway" field for your network card is set to the IP Address of the LevelOne Broadband Router.
- Ensure your DNS (Name Server) settings are correct.

## Printing Setup

To use LPD printing to the LevelOne Broadband Router's printer, install an LPD printer using the standard procedure for your system.

- Use the LevelOne Broadband Router's IP Address as the location of the remote host
- Use L1, L2, or L3 for the name of the printer on the remote host.

On the LevelOne Broadband Router, the logical printers (L1, L2, and L3) can be configured on the *Advanced - Printer Port* screen. See **Printer Port** in Chapter 7 for details.



## Chapter 5

# Operation and Status

# 5

*This Chapter details the operation of the LevelOne Broadband Router and the status screens.*

## Operation

Once both the LevelOne Broadband Router and the PCs are configured, operation is automatic.

However, there are some situations where additional Internet configuration may be required:

- If using Internet-based *Communication Applications*, it may be necessary to specify which PC receives an incoming connection. Refer to *Chapter 6 - Advanced Features* for further details.
- Applications which use non-standard connections or port numbers may be blocked by the LevelOne Broadband Router's built-in firewall. You can define such applications as *Special Applications* to allow them to function normally. Refer to *Chapter 6 - Advanced Features* for further details.
- Some non-standard applications may require use of the *DMZ* feature. Refer to *Chapter 6 - Advanced Features* for further details.

## Status Screen

Use the *Status* link on the main menu to view this screen.

The screenshot displays the LevelOne Status Screen. On the left is a navigation menu with links for WAN Wizard, LAN, Password, Status, Advanced, Help, and Log Out. The main content area is titled 'Status' and is divided into sections: Internet, LAN, System, and Printer. Each section displays specific status information and has a corresponding button for more details.

Section	Parameter	Value
Internet	Connection Method:	Direct
	Broadband Modem:	No Connection
	Internet Connection:	Idle
	Internet IP Address:	
LAN	IP Address:	192.168.0.1
	Network Mask:	255.255.255.0
	DHCP Server:	ON
System	Device Name:	SC262400
	Firmware Version:	Version 1.6 Release 00
Printer	Printer Status:	Off Line

Buttons visible on the screen: Connection Details, System Data, Abort Current Print Job, Refresh Screen, Help.

Figure 26: Status Screen

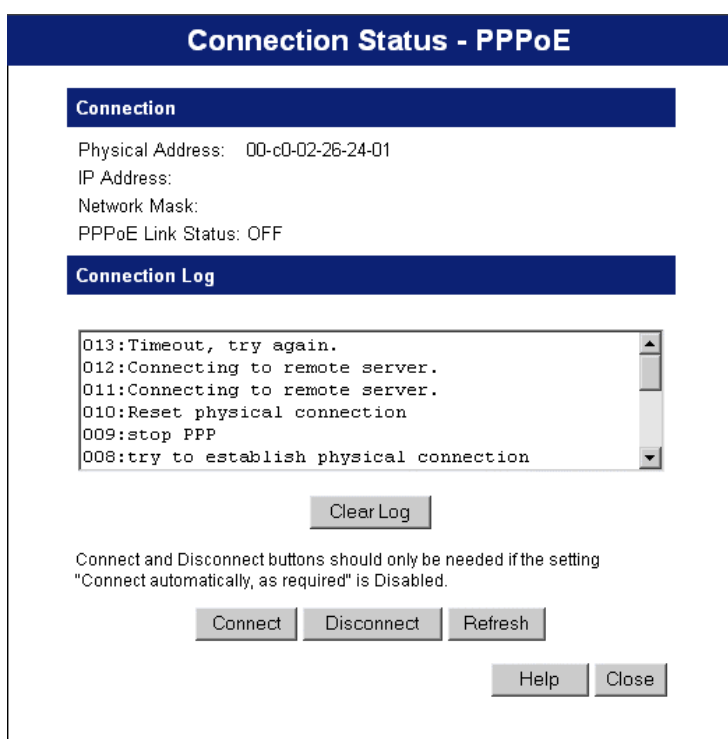
**Data - Status Screen**

<b>Internet</b>	
<b>Connection Method</b>	This indicates the current connection method, as set in the Setup Wizard.
<b>Broadband Modem</b>	This shows the connection status of the modem.
<b>Internet Connection</b>	<p>Current connection status:</p> <ul style="list-style-type: none"> <li>• Active</li> <li>• Idle</li> <li>• Unknown</li> <li>• Failed</li> </ul> <p>If there is an error, you can click the "Connection Details" button to find out more information.</p>
<b>Internet IP Address</b>	This IP Address is allocated by the ISP (Internet Service Provider).
<b>"Connection Details" Button</b>	Click this button to open a sub-window and view a detailed description of the current connection. Depending on the type of connection, a "log" may also be available.
<b>LAN</b>	
<b>IP Address</b>	The IP Address of the LevelOne Broadband Router.
<b>Network Mask</b>	The Network Mask (Subnet Mask) for the IP Address above.
<b>DHCP Server</b>	<p>This shows the status of the DHCP Server function - either "Enabled" or "Disabled".</p> <p>For additional information about the PCs on your LAN, and the IP addresses allocated to them, use the <i>PC Database</i> option on the <i>Advanced</i> menu.</p>
<b>System</b>	
<b>Device Name</b>	This displays the current name of the LevelOne Broadband Router.
<b>Firmware Version</b>	The current version of the firmware installed in the LevelOne Broadband Router.
<b>"System Data" Button</b>	Clicking this button will open a Window which lists all system details and settings.
<b>Printer (FBR-1403TX Only)</b>	
<b>Printer Status</b>	<p>This indicates the current status of the printer. Possible values are:</p> <ul style="list-style-type: none"> <li>• Idle</li> <li>• Printing</li> <li>• Off-line</li> <li>• Out of paper</li> </ul>
<b>"Abort Current Print Job" Button</b>	Click this button to terminate the current print job. This button should be used if the current print job is not printing correctly.

Buttons	
<b>Connection Details</b>	View the details of the current Internet connection. The sub-screen displayed will depend on the connection method used. See the following sections for details of each sub-screen.
<b>System Data</b>	Display all system information in a sub-window.
<b>Refresh Screen</b>	Update the data displayed on screen.

## Connection Status - PPPoE

If using PPPoE (PPP over Ethernet), a screen like the following example will be displayed when the "Connection Details" button is clicked.



**Figure 27: PPPoE Status Screen**

## Data - PPPoE

Connection	
<b>Physical Address</b>	The hardware address of this device, as seen by remote devices on the Internet. (This is different to the hardware address seen by devices on the local LAN.)
<b>IP Address</b>	The IP Address of this device, as seen by Internet users. This address is allocated by your ISP (Internet Service Provider).
<b>Network Mask</b>	The Network Mask associated with the IP Address above.
<b>PPPoE Link Status</b>	This indicates whether or not the connection is currently established.

	<ul style="list-style-type: none"> <li>• If the connection does not exist, the "Connect" button can be used to establish a connection.</li> <li>• If the connection currently exists, the "Disconnect" button can be used to break the connection.</li> </ul>
<b>Connection Log</b>	
<b>Connection Log</b>	<ul style="list-style-type: none"> <li>• The Connection Log shows status messages relating to the existing connection.</li> <li>• The most common messages are listed in the table below.</li> <li>• The "Clear Log" button will restart the Log, while the Refresh button will update the messages shown on screen.</li> </ul>
<b>Buttons</b>	
<b>Connect</b>	If not connected, establish a connection to your ISP.
<b>Disconnect</b>	If connected to your ISP, hang up the connection.
<b>Clear Log</b>	Delete all data currently in the Log. This will make it easier to read new messages.
<b>Refresh</b>	Update the data on screen.

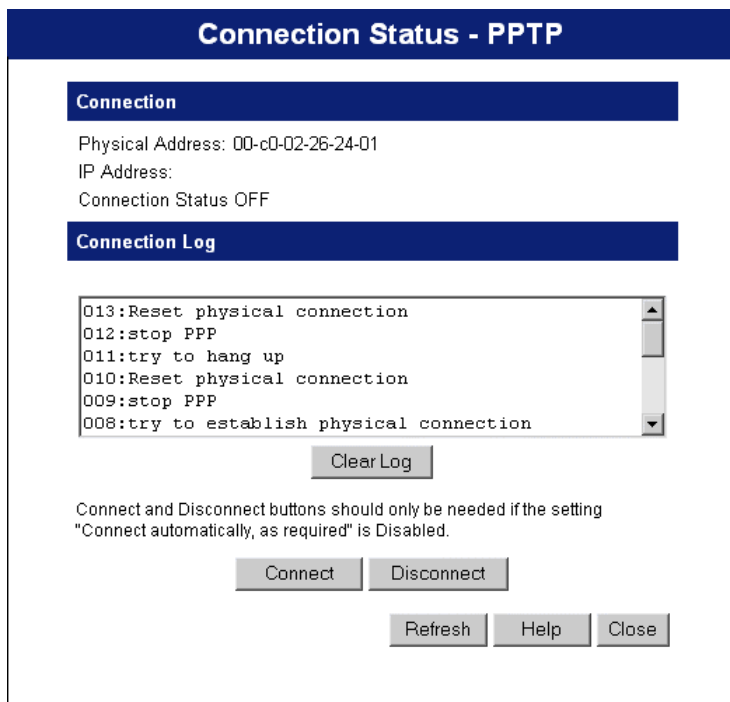
## Connection Log Messages

Message	Description
Connect on Demand	Connection attempt has been triggered by the "Connect automatically, as required" setting.
Manual connection	Connection attempt started by the "Connect" button.
Reset physical connection	Preparing line for connection attempt.
Connecting to remote server	Attempting to connect to the ISP's server.
Remote Server located	ISP's Server has responded to connection attempt.
Start PPP	Attempting to login to ISP's Server and establish a PPP connection.
PPP up successfully	Able to login to ISP's Server and establish a PPP connection.
Idle time-out reached	The connection has been idle for the time period specified in the "Idle Time-out" field. The connection will now be terminated.
Disconnecting	The current connection is being terminated, due to either the "Idle Time-out" above, or "Disconnect" button being clicked.
Error: Remote Server not found	ISP's Server did not respond. This could be a Server problem, or a problem with the link to the Server.
Error: PPP Connection failed	Unable to establish a PPP connection with the ISP's Server. This could be a login problem (name or password) or a Server problem.
Error: Connection to Server lost	The existing connection has been lost. This could be caused by a power failure, a link failure, or Server failure.

Error: Invalid or unknown packet type	The data received from the ISP's Server could not be processed. This could be caused by data corruption (from a bad link), or the Server using a protocol which is not supported by this device.
---------------------------------------	--

## Connection Status - PPTP

If using PPTP (Peer-to-Peer Tunneling Protocol), a screen like the following example will be displayed when the "Connection Details" button is clicked.



**Figure 28: PPTP Status Screen**

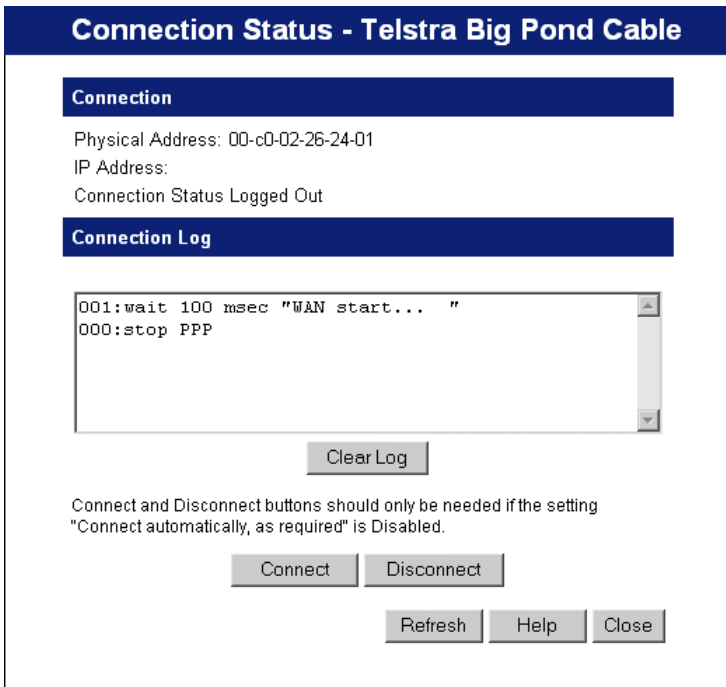
### Data - PPTP

Connection	
<b>Physical Address</b>	The hardware address of this device, as seen by remote devices on the Internet. (This is different to the hardware address seen by devices on the local LAN.)
<b>IP Address</b>	The IP Address of this device, as seen by Internet users. This address is allocated by your ISP (Internet Service Provider).
<b>PPTP Status</b>	<p>This indicates whether or not the connection is currently established.</p> <ul style="list-style-type: none"> <li>If the connection does not exist, the "Connect" button can be used to establish a connection.</li> <li>If the connection currently exists, the "Disconnect" button can be used to break the connection.</li> </ul>
Connection Log	
<b>Connection Log</b>	<ul style="list-style-type: none"> <li>The Connection Log shows status messages relating to the</li> </ul>

	<p>existing connection.</p> <ul style="list-style-type: none"> <li>The "Clear Log" button will restart the Log, while the Refresh button will update the messages shown on screen.</li> </ul>
Buttons	
<b>Connect</b>	If not connected, establish a connection to your ISP.
<b>Disconnect</b>	If connected to your ISP, hang up the connection.
<b>Clear Log</b>	Delete all data currently in the Log. This will make it easier to read new messages.
<b>Refresh</b>	Update the data on screen.

## Connection Status - Telstra Big Pond

An example screen is shown below.



**Figure 29: Telstra Big Pond Status Screen**

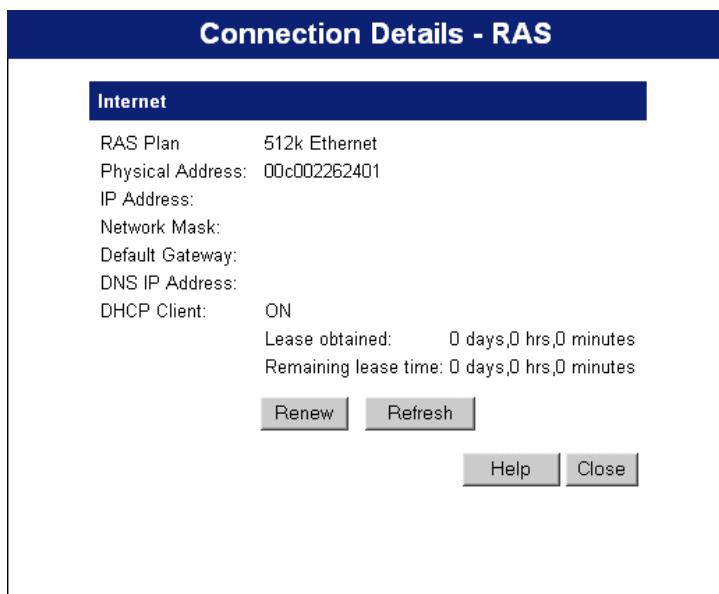
### Data - Big Pond

Connection	
<b>Physical Address</b>	The hardware address of this device, as seen by remote devices. (This is different to the hardware address seen by devices on the local LAN.)
<b>IP Address</b>	The IP Address of this device, as seen by Internet users. This address is allocated by your ISP (Internet Service Provider).
<b>Connection Status</b>	This indicates whether or not the connection is currently established.

	<ul style="list-style-type: none"> <li>• If the connection does not exist, the "Connect" button can be used to establish a connection.</li> <li>• If the connection currently exists, the "Disconnect" button can be used to break the connection.</li> <li>• Normally, it is not necessary to use the Connect and Disconnect buttons unless the setting "Connect automatically, as required" is disabled.</li> </ul>
<b>Connection Log</b>	
<b>Connection Log</b>	<ul style="list-style-type: none"> <li>• The Connection Log shows status messages relating to the existing connection.</li> <li>• The Clear Log button will restart the Log, while the Refresh button will update the messages shown on screen.</li> </ul>
<b>Buttons</b>	
<b>Connect</b>	If not connected, establish a connection to Telstra Big Pond.
<b>Disconnect</b>	If connected to Telstra Big Pond, terminate the connection.
<b>Clear Log</b>	Delete all data currently in the Log. This will make it easier to read new messages.
<b>Refresh</b>	Update the data on screen.

## Connection Details - SingTel RAS

If using the SingTel RAS access method, a screen like the following example will be displayed when the "Connection Details" button is clicked.



**Figure 30: Connection Details - RAS**

**Data - RAS**

<b>Internet</b>	
<b>RAS Plan</b>	The RAS Plan which is currently used.
<b>Physical Address</b>	The hardware address of this device, as seen by remote devices on the Internet. (This is different to the hardware address seen by devices on the local LAN.)
<b>IP Address</b>	The IP Address of this device, as seen by Internet users. This address is allocated by your ISP (Internet Service Provider).
<b>Network Mask</b>	The Network Mask associated with the IP Address above.
<b>Default Gateway</b>	The IP Address of the remote Gateway or Router associated with the IP Address above.
<b>DNS IP Address</b>	The IP Address of the Domain Name Server which is currently used.
<b>DHCP Client</b>	<p>This will show "Enabled" or "Disabled", depending on whether or not this device is functioning as a DHCP client.</p> <p>If "Enabled" the "Remaining lease time" field indicates when the IP Address allocated by the DHCP Server will expire. The lease is automatically renewed on expiry; use the "Renew" button if you wish to manually renew the lease immediately.</p>
<b>Buttons</b>	
<b>Release/Renew Button will display EITHER "Release" OR "Renew"</b>	<p>This button is only useful if the IP address shown above is allocated automatically on connection. (Dynamic IP address). If you have a Fixed (Static) IP address, this button has no effect.</p> <ul style="list-style-type: none"> <li>• If the ISP's DHCP Server has NOT allocated an IP Address for the LevelOne Broadband Router, this button will say "Renew". Clicking the "Renew" button will attempt to re-establish the connection and obtain an IP Address from the ISP's DHCP Server.</li> <li>• If an IP Address has been allocated to the LevelOne Broadband Router (by the ISP's DHCP Server), this button will say "Release". Clicking the "Release" button will break the connection and release the IP Address.</li> </ul>
<b>Refresh</b>	Update the data shown on screen.



## Connection Details - Fixed/Dynamic IP Address

If your access method is "Direct" (no login), a screen like the following example will be displayed when the "Connection Details" button is clicked.

**Connection Details**

**Internet**

Physical Address: 00-c0-02-26-24-01  
 IP Address:  
 Network Mask:  
 Default Gateway:  
 DNS IP Address:  
 DHCP Client: ON  
 Lease obtained: 0 days,0 hrs,0 minutes  
 Remaining lease time: 0 days,0 hrs,0 minutes

Figure 31: Connection Details - Fixed/Dynamic IP Address

### Data - Fixed/Dynamic IP address

Internet	
<b>Physical Address</b>	The hardware address of this device, as seen by remote devices on the Internet. (This is different to the hardware address seen by devices on the local LAN.)
<b>IP Address</b>	The IP Address of this device, as seen by Internet users. This address is allocated by your ISP (Internet Service Provider).
<b>Network Mask</b>	The Network Mask associated with the IP Address above.
<b>Default Gateway</b>	The IP Address of the remote Gateway or Router associated with the IP Address above.
<b>DNS IP Address</b>	The IP Address of the Domain Name Server which is currently used.
<b>DHCP Client</b>	<p>This will show "Enabled" or "Disabled", depending on whether or not this device is functioning as a DHCP client.</p> <p>If "Enabled" the "Remaining lease time" field indicates when the IP Address allocated by the DHCP Server will expire. The lease is automatically renewed on expiry; use the "Renew" button if you wish to manually renew the lease immediately.</p>

<b>Buttons</b>	
<b>Release/Renew</b> <b>Button will display</b> <b>EITHER</b> <b>"Release"</b> <b>OR</b> <b>"Renew"</b>	<p>This button is only useful if the IP address shown above is allocated automatically on connection. (Dynamic IP address). If you have a Fixed (Static) IP address, this button has no effect.</p> <ul style="list-style-type: none"><li>• If the ISP's DHCP Server has NOT allocated an IP Address for the LevelOne Broadband Router, this button will say "Renew". Clicking the "Renew" button will attempt to re-establish the connection and obtain an IP Address from the ISP's DHCP Server.</li><li>• If an IP Address has been allocated to the LevelOne Broadband Router (by the ISP's DHCP Server), this button will say "Release". Clicking the "Release" button will break the connection and release the IP Address.</li></ul>
<b>Refresh</b>	Update the data shown on screen.

## Chapter 6

# 6

# Advanced Features

*This Chapter explains when and how to use the LevelOne Broadband Router's "Advanced" Features.*

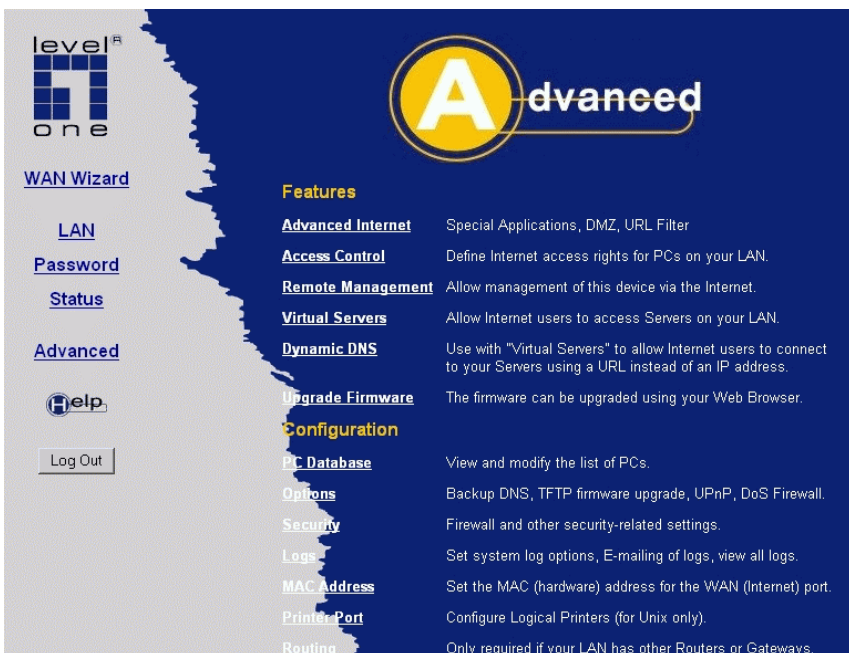
## Overview

The following advanced features are provided.

- Advanced Internet
  - Communication Applications
  - Special Applications
  - DMZ
  - URL filter
- Access Control
- Remote Management
- Virtual Servers
- Dynamic DNS
- Firmware Upgrade

## Advanced Menu Screen

This screen provides access to the advanced features. An example screen is shown below. The Printer Port option is only available for FBR-1403TX.



**Figure 32: Advanced Menu**

## Advanced Internet Screen

This screen allows configuration of all advanced features relating to Internet access.

- Communication Applications
- Special Applications
- DMZ
- URL filter

An example screen is shown below.

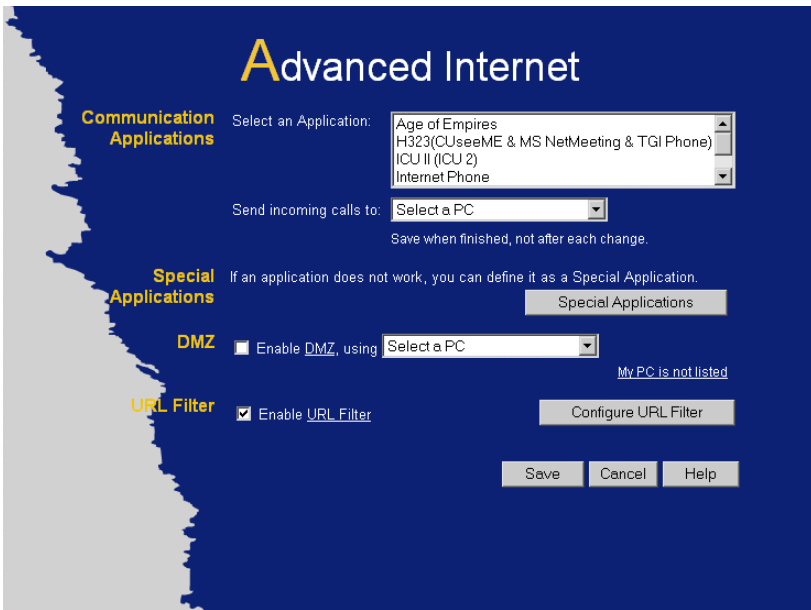


Figure 33: Internet Screen

### Communication Applications

Most applications are supported transparently by the LevelOne Broadband Router. But sometimes it is not clear which PC should receive an incoming connection. This problem could arise with the *Communication Applications* listed on this screen.

If this problem arises, you can use this screen to set which PC should receive an incoming connection, as described below.

#### Communication Applications

<b>Select an Application</b>	This lists applications which may generate incoming connections, where the destination PC (on your local LAN) is unknown.
<b>Send incoming calls to</b>	<p>This lists the PCs on your LAN.</p> <ul style="list-style-type: none"> <li>• If necessary, you can add PCs manually, using the "PC Database" option on the advanced menu.</li> <li>• For each application listed above, you can choose a destination PC.</li> <li>• There is no need to "Save" after each change; you can set the destination PC for each application, then click "Save".</li> </ul>

## Special Applications

If you use Internet applications which use non-standard connections or port numbers, you may find that they do not function correctly because they are blocked by the LevelOne Broadband Router's firewall. In this case, you can define the application as a "Special Application".

### Special Applications Screen

This screen can be reached by clicking the *Special Applications* button on the *Internet* screen.

You can then define your Special Applications. You will need detailed information about the application; this is normally available from the supplier of the application.

Also, note that the terms "Incoming" and "Outgoing" on this screen refer to traffic from the client (PC) viewpoint

**Special Applications**

Special Applications can only be used by 1 user at any time.

		Incoming Ports			Outgoing Ports		
Name	Type	Start	Finish	Type	Start	Finish	
1. <input type="checkbox"/> dialpad	udp	51200	51201	udp	51200	51201	
2. <input type="checkbox"/> paltalk	udp	2090	2091	udp	2090	2091	
3. <input type="checkbox"/> quicktime	udp	6970	6999	tcp	554	554	
4. <input type="checkbox"/> starcraft	udp	6112	6112	tcp	6112	6112	
5. <input type="checkbox"/> <input style="width: 80px;" type="text"/>	udp	<input style="width: 40px;" type="text"/>	<input style="width: 40px;" type="text"/>	udp	<input style="width: 40px;" type="text"/>	<input style="width: 40px;" type="text"/>	
6. <input type="checkbox"/> <input style="width: 80px;" type="text"/>	udp	<input style="width: 40px;" type="text"/>	<input style="width: 40px;" type="text"/>	udp	<input style="width: 40px;" type="text"/>	<input style="width: 40px;" type="text"/>	

**Figure 34: Special Applications Screen**

## Data - Special Applications Screen

<b>Checkbox</b>	Use this to Enable or Disable this Special Application as required.
<b>Name</b>	Enter a descriptive name to identify this Special Application.
<b>Incoming Ports</b>	<ul style="list-style-type: none"> <li>• <b>Type</b> - Select the protocol (TCP or UDP) used when you receive data from the special application or service. (Note: Some applications use different protocols for outgoing and incoming data).</li> <li>• <b>Start</b> - Enter the beginning of the range of port numbers used by the application server, for data you receive. If the application uses a single port number, enter it in both the "Start" and "Finish" fields.</li> <li>• <b>Finish</b> - Enter the end of the range of port numbers used by the application server, for data you receive.</li> </ul>
<b>Outgoing Ports</b>	<ul style="list-style-type: none"> <li>• <b>Type</b> - Select the protocol (TCP or UDP) used when you send data to the remote system or service.</li> <li>• <b>Start</b> - Enter the beginning of the range of port numbers used by the application server, for data you send to it. If the application uses a single port number, enter it in both the "Start" and "Finish" fields.</li> <li>• <b>Finish</b> - Enter the end of the range of port numbers used by the application server, for data you send to it. If the application uses a single port number, enter it in both the "Start" and "Finish" fields.</li> </ul>

## Using a Special Application

- Configure the *Special Applications* screen as required.
- On your PC, use the application normally. Remember that only one (1) PC can use each Special application at any time. Also, when 1 PC is finished using a particular Special Application, there may need to be a "Time-out" before another PC can use the same Special Application. The "Time-out" period may be up to 3 minutes.



**Note!**

**If an application still cannot function correctly, try using the "DMZ" feature.**

## DMZ

This feature, if enabled, allows one (1) computer on your LAN to be exposed to all users on the Internet, allowing unrestricted 2-way communication between the "DMZ PC" and other Internet users or Servers.

- This allows almost any application to be used on the "DMZ PC".
- The "DMZ PC" will receive all "Unknown" connections and data.
- If the DMZ feature is enabled, you must select the PC to be used as the "DMZ PC".
- The DMZ feature can be Enabled and Disabled on the *Advanced Internet* screen.



The "DMZ PC" is effectively outside the Firewall, making it more vulnerable to attacks. For this reason, you should only enable the DMZ feature when required.

## URL Filter

The URL Filter allows you to block access to undesirable Web site

- To use this feature, you must define "filter strings". If the "filter string" appears in a requested URL, the request is blocked.
- Enabling the *URL Filter* also affects the *Internet Access Log*. If Enabled, the "Destination" field in the log will display the URL. Otherwise, it will display the IP Address.
- The *URL Filter* can be Enabled or Disabled on the *Advanced Internet* screen.

## URL Filter Screen

Click the "Configure URL Filter" button on the *Internet* screen to access the *URL Filter* screen. An example screen is shown below.

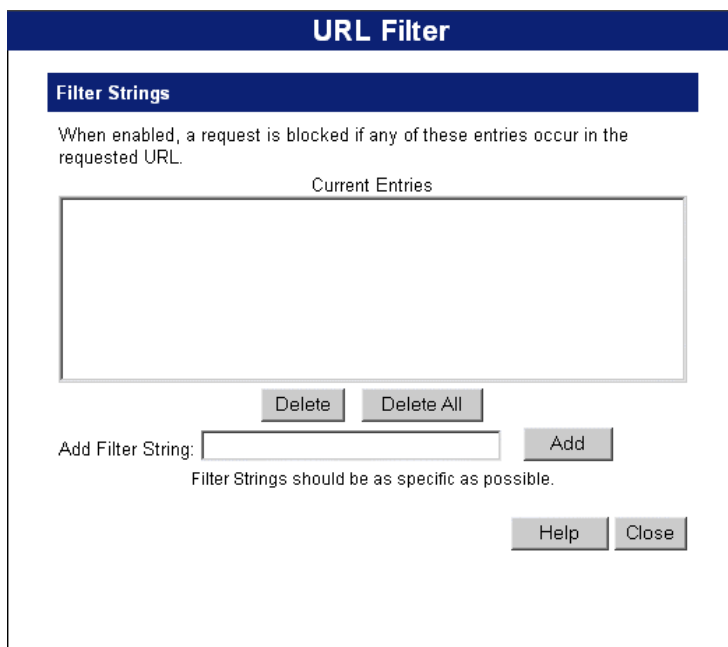


Figure 35: URL Filter Screen

## Data - URL Filter Screen

Filter Strings	
<b>Current Entries</b>	This lists any existing entries. If you have not entered any values, this list will be empty.
<b>Add Filter String</b>	To add an entry to the list, enter it here, and click the "Add" button. An entry may be a Domain name (e.g. www.trash.com) or simply a string. (e.g. ads/ ) Any URL which contains ANY entry ANYWHERE in the URL will be blocked.

Buttons	
<b>Delete/Delete All</b>	Use these buttons to delete the selected entry or all entries, as required. Multiple entries can be selected by holding down the CTRL key while selecting. (On the Macintosh, hold the SHIFT key while selecting.)
<b>Add</b>	Use this to add the current Filter String to the site list.

## Access Control

This feature is accessed by the *Access Control* link on the Advanced menu.

### Overview

The Access Control feature allows administrators to restrict the level of Internet Access available to PCs on your LAN. With the default settings, everyone has unrestricted Internet access.

#### To use this feature:

1. Set the desired restrictions on the "Default" group. All PCs are in the "Default" group unless explicitly moved to another group.
2. Set the desired restrictions on the other groups ("Group 1", "Group 2", "Group 3" and "Group 4") as needed.
3. Assign PC to the groups as required.



**Restrictions are imposed by blocking "Services", or types of connections. All common Services are pre-defined. If required, you can also define your own Services.**



## Access Control Screen

To view this screen, select the *Access Control* link on the Advanced menu.



Figure 36: Access Control Screen

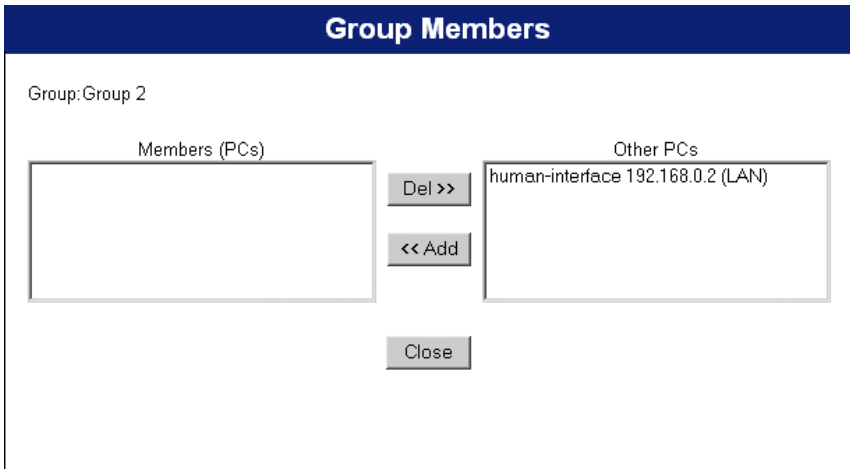
### Data - Access Control Screen

Group	
Group	Select the desired Group. The screen will update to display the settings for the selected Group. Groups are named "Default", "Group 1", "Group 2", "Group 3" and "Group 4", and cannot be re-named.
"Members" Button	<p>Click this button to add or remove members from the current Group.</p> <ul style="list-style-type: none"> <li>• If the current group is "Default", then members can not be added or deleted. This group contains PCs not allocated to any other group.</li> <li>• To remove PCs from the Default Group, assign them to another Group.</li> <li>• To assign PCs to the Default Group, delete them from the Group they are currently in.</li> </ul> <p>See the following section for details of the <i>Group Members</i> screen.</p>

<b>Internet Access</b>	
<b>Restrictions</b>	<p>Select the desired options for the current group:</p> <ul style="list-style-type: none"> <li>• None - Nothing is blocked. Use this to create the least restrictive group.</li> <li>• Block all Internet access - All traffic via the WAN port is blocked. Use this to create the most restrictive group.</li> <li>• Block selected Services - You can select which Services are to block. Use this to gain fine control over the Internet access for a group.</li> </ul>
<b>Block by Schedule</b>	If Internet access is being blocked, you can choose to apply the blocking only during scheduled times. (If access is not blocked, no Scheduling is possible, and this setting has no effect.)
<b>Define Schedule Button</b>	Clicking this will open a sub-window where you can define or modify the Schedule.
<b>Services</b>	This lists all defined Services. Select the Services you wish to block. To select multiple services, hold the CTRL key while selecting. (On the Macintosh, hold the SHIFT key rather than CTRL.)
<b>Edit Service List Button</b>	If you wish to define additional Services, or manage the Service list, click this button to open the "Services" screen.
<b>Buttons</b>	
<b>Members</b>	<p>Click this button to add or remove members from the current Group.</p> <p>If the current group is "Default", then members can not be added or deleted. This group contains PCs not allocated to any other group.</p> <p>See the following section for details of the <i>Group Members</i> screen.</p>
<b>Define Schedule</b>	Click this to open a sub-window where you can define or modify the Schedule.
<b>Edit Service List</b>	If you wish to define additional Services, or manage the Service list, click this button to open the "Services" screen.
<b>Save</b>	Save the data on screen.
<b>Cancel</b>	Reverse any changes made since the last "Save".
<b>View Log</b>	Click this to open a sub-window where you can view the "Access Control" log. This log shows attempted Internet accesses which have been blocked by the Access Control feature.
<b>Clear Log</b>	Click this to clear and restart the "Access Control" log, making new entries easier to read.

## Group Members Screen

This screen is displayed when the *Members* button on the *Access Control* screen is clicked.



**Figure 37: Group Members**

Use this screen to add or remove members (PCs) from the current group.

- The "Del >>" button will remove the selected PC (in the *Members* list) from the current group.
- The "<< Add" button will add the selected PC (in the *Other PCs* list) to the current group.



**Note!**

**PCs not assigned to any group will be in the "Default" group.  
PCs deleted from any other Group will be added to the "Default" group.**

## Default Schedule Screen

This screen is displayed when the *Define Schedule* button on the *Access Control* screen is clicked.

- This schedule can be (optionally) applied to any Access Control Group.
- Blocking will be performed during the scheduled time (between the "Start" and "Finish" times.)
- Two (2) separate sessions or periods can be defined.
- Times must be entered using a 24 hr clock.
- If the time for a particular day is blank, no action will be performed.

**Default Schedule**

Use 24 hour clock. On all day: 00:00 to 24:00  
Off all day: All fields blank

Day	Session 1		Session 2	
	Start	Finish	Start	Finish
Monday	<input type="text"/>	<input type="text"/>	<input type="text"/>	<input type="text"/>
Tuesday	<input type="text"/>	<input type="text"/>	<input type="text"/>	<input type="text"/>
Wednesday	<input type="text"/>	<input type="text"/>	<input type="text"/>	<input type="text"/>
Thursday	<input type="text"/>	<input type="text"/>	<input type="text"/>	<input type="text"/>
Friday	<input type="text"/>	<input type="text"/>	<input type="text"/>	<input type="text"/>
Saturday	<input type="text"/>	<input type="text"/>	<input type="text"/>	<input type="text"/>
Sunday	<input type="text"/>	<input type="text"/>	<input type="text"/>	<input type="text"/>

**Figure 38: Default Schedule Screen**

### Data - Default Schedule Screen

<b>Day</b>	Each day of the week can be scheduled independently.
<b>Session 1</b> <b>Session 2</b>	Two (2) separate sessions or periods can be defined. Session 2 can be left blank if not required.
<b>Start Time</b>	Enter the start using a 24 hr clock.
<b>Finish Time</b>	Enter the finish time using a 24 hr clock.

## Services Screen

This screen is displayed when the *Edit Service List* button on the *Access Control* screen is clicked.

The screenshot shows a window titled "Services". It contains two main sections:

- Available Services:** A list box containing the following services: AIM(TCP:5190), BGP(TCP:179), BOOTP\_CLIENT(UDP:68), BOOTP\_SERVER(UDP:67..68), CU-SEEME(TCP/UDP:7648), and DNS(TCP/UDP:53). Below the list is a "Delete" button.
- Add New Service:** A form with the following fields:
  - Name:
  - Type:  (dropdown menu)
  - Start Port:  (TCP or UDP)
  - Finish Port:  (TCP or UDP)
  - ICMP Type:  (0..255)
 Below the form are "Add" and "Cancel" buttons.

At the bottom right of the window are "Help" and "Close" buttons.

Figure 39: Access Control - Services

## Data - Services Screen

Available Services	
<b>Available Services</b>	This lists all the available services.
<b>"Delete" button</b>	Use this to delete any Service you have added. Pre-defined Services can not be deleted.
Add New Service	
<b>Name</b>	Enter a descriptive name to identify this service.
<b>Type</b>	Select the protocol (TCP, UDP, ICMP) used to the remote system or service.
<b>Start Port</b>	For TCP and UDP Services, enter the beginning of the range of port numbers used by the service. If the service uses a single port number, enter it in both the "Start" and "Finish" fields.
<b>Finish Port</b>	For TCP and UDP Services, enter the end of the range of port numbers used by the service. If the service uses a single port number, enter it in both the "Start" and "Finish" fields.
<b>ICMP Type</b>	For ICMP Services, enter the type number of the required service.
Buttons	
<b>Delete</b>	Delete the selected service from the list.
<b>Save</b>	Add a new entry to the Service list, using the data shown in the "Add

	New Service" area on screen.
<b>Cancel</b>	Clear the " Add New Service " area, ready for entering data for a new Service.

## Access Control Log

To check the operation of the Access Control feature, an *Access Control Log* is provided. Click the *View Log* button on the *Access Control* screen to view this log.

This log shows attempted Internet accesses which have been **blocked** by the *Access Control* function.

Data shown in this log is as follows:

<b>Date/Time</b>	Date and Time of the attempted access.
<b>Name</b>	If known, the name of the PC whose access was blocked. This name is taken from the <i>Network Clients</i> database
<b>Source IP address</b>	The IP Address of the PC or device whose access request was blocked
<b>MAC address</b>	The hardware or physical address of the PC or device whose access request was blocked
<b>Destination</b>	The destination URL or IP address

## Remote Management

This feature allows you to manage the LevelOne Broadband Router via the Internet.



Figure 40: Remote Management Screen

### Data - Remote Management Screen

Remote Management	
<b>Enable Remote Management</b>	Enable to allow management via the Internet. If Disabled, this device will ignore management connection attempts from the Internet.
<b>Port Number</b>	Enter a port number between 1024 and 65535 (8080 is recommended). This port number must be specified when you connect (see below).  <b>Note:</b> The default port number for HTTP (Web) connections is port 80, but using port 80 here will prevent the use of a Web "Virtual Server" on your LAN. (See <i>Advanced Internet - Virtual Servers</i> )
<b>Current IP Address</b>	You must use this IP Address to connect (see below).  This IP Address is allocated by your ISP. But if using a Dynamic IP Address, this value can change each time you connect to your ISP. So it is better if your ISP allocates you a Fixed IP Address.

### To connect from a remote PC via the Internet

1. Ensure your Internet connection is established, and start your Web Browser.
2. In the "Address" bar, enter "HTTP:///" followed by the Internet IP Address of the LevelOne Broadband Router. If the port number is not 80, the port number is also required. (After the IP Address, enter ":" followed by the port number.)  
e.g.

HTTP://123.123.123.123:8080

This example assumes the WAN IP Address is 123.123.123.123, and the port number is 8080.

## Virtual Servers

This feature allows you to make Servers on your LAN accessible to Internet users. Normally, Internet users would not be able to access a server on your LAN because:

- Your Server does not have a valid external IP Address.
- Attempts to connect to devices on your LAN are blocked by the firewall in this device.

The "Virtual Server" feature solves these problems and allows Internet users to connect to your servers, as illustrated below.

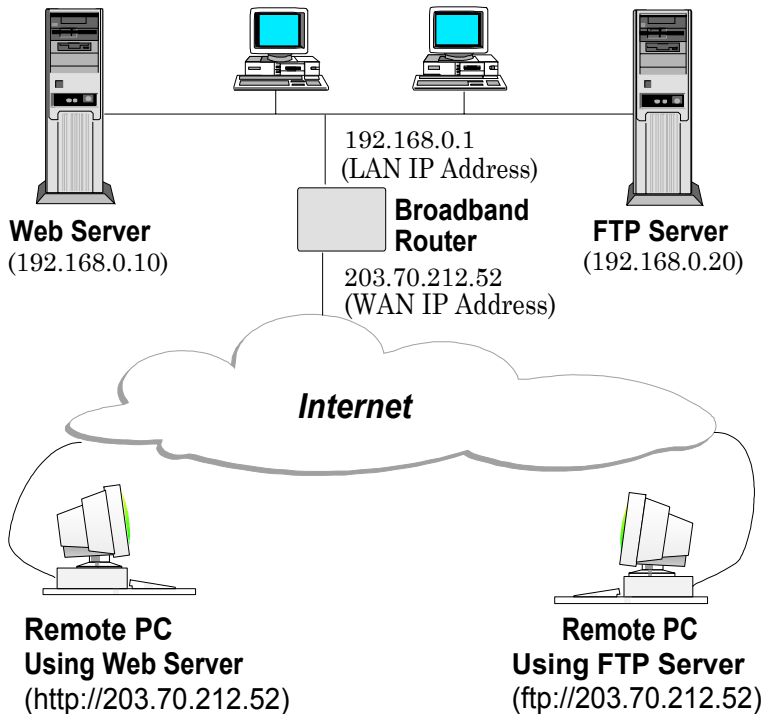


Figure 41: Virtual Servers

### IP Address seen by Internet Users

Note that, in this illustration, both Internet users are connecting to the same IP Address, but using different protocols.

**To Internet users, all virtual Servers on your LAN have the same IP Address. This IP Address is allocated by your ISP.**

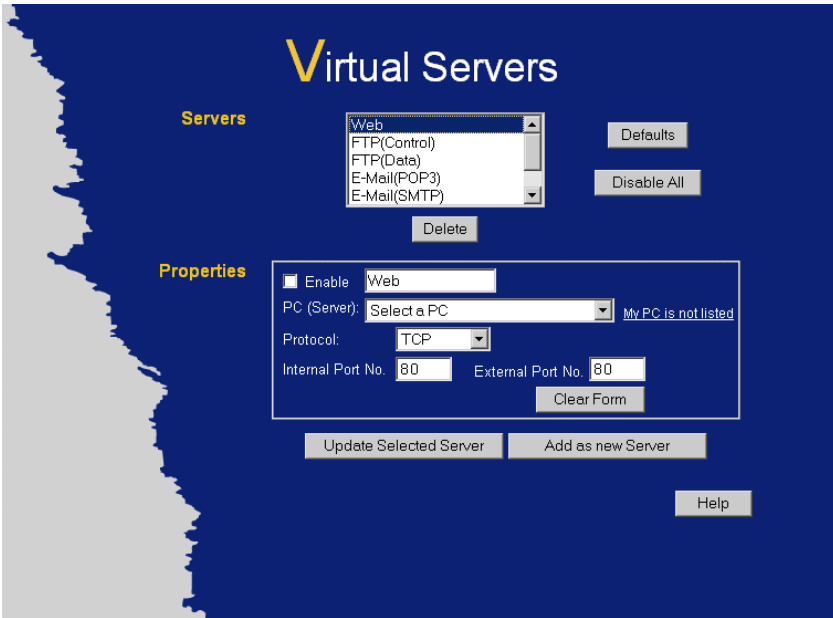
This address should be static, rather than dynamic, to make it easier for Internet users to connect to your Servers.

However, you can use the *DDNS (Dynamic DNS)* feature to allow users to connect to your Virtual Servers using a URL, instead of an IP Address.



## Virtual Servers Screen

The *Virtual Servers* screen is reached by the *Virtual Servers* link on the *Advanced* screen. An example screen is shown below.



**Figure 42: Virtual Servers Screen**

This screen lists a number of pre-defined Servers, and allows you to define your own Servers. Details of the selected Server are shown in the "Properties" area.

### Data - Virtual Servers Screen

Servers	
<b>Servers</b>	This lists a number of pre-defined Servers, plus any Servers you have defined. Details of the selected Server are shown in the "Properties" area.
Properties	
<b>Enable</b>	Use this to Enable or Disable support for this Server, as required. <ul style="list-style-type: none"> <li>• If Enabled, any incoming connections will be forwarded to the selected PC.</li> <li>• If Disabled, any incoming connection attempts will be blocked.</li> </ul>
<b>PC (Server)</b>	Select the PC for this Server. The PC must be running the appropriate Server software.
<b>Protocol</b>	Select the protocol (TCP or UDP) used by the Server.
<b>Internal Port No.</b>	Enter the port number which the Server software is configured to use.
<b>External Port No.</b>	The port number used by Internet users when connecting to the Server. This is normally the same as the Internal Port Number. If it is different, this device will perform a "mapping" or "translation" function, allowing the server to use one port address, while clients use a different port address.

Buttons	
<b>Defaults</b>	This will delete any Servers you have defined, and set the pre-defined Servers to use their default port numbers.
<b>Disable All</b>	This will cause the "Enable" setting of all Virtual Servers to be set OFF.
<b>Add</b>	Add a new entry to the Virtual Server list, using the data shown in the "Properties" area on screen. The entry selected in the list is ignored, and has no effect.
<b>Update</b>	Update the current Virtual Server entry, using the data shown in the "Properties" area on screen.
<b>Delete</b>	Delete the current Virtual Server entry. Note that the pre-defined Servers can not be deleted. Only Servers you have defined yourself can be deleted.
<b>Clear Form</b>	Clear all data from the "Properties" area, ready for input of a new Virtual Server entry.

**Note!**

**For each entry, the PC must be running the appropriate Server software.**

## Defining your own Virtual Servers

If the type of Server you wish to use is not listed on the *Virtual Servers* screen, you can define and manage your own Servers:

### Create a new Server:

1. Click "Clear Form"
2. Enter the required data, as described above.
3. Click "Add".
4. The new Server will now appear in the list.

### Modify (Edit) a Server:

1. Select the desired Server from the list
2. Make any desired changes (for example, change the Enable/Disable setting).
3. Click "Update" to save changes to the selected Server.

### Delete a Server:

1. Select the entry from the list.
2. Click "Delete".

**Note:** You can only delete Servers you have defined. Pre-defined Server cannot be deleted.

**Note!**

**From the Internet, ALL Virtual Servers have the IP Address allocated by your ISP.**

## Connecting to the Virtual Servers

Once configured, anyone on the Internet can connect to your Virtual Servers. They must use the Internet IP Address (the IP Address allocated to you by your ISP).

e.g.

`http://203.70.212.52`

`ftp://203.70.212.52`

It is more convenient if you are using a Fixed IP Address from your ISP, rather than Dynamic. However, you can use the *Dynamic DNS* feature, described in the following section, to allow users to connect to your Virtual Servers using a URL, rather than an IP Address.

## Dynamic DNS (Domain Name Server)

This free service is very useful when combined with the *Virtual Server* feature. It allows Internet users to connect to your Virtual Servers using a URL, rather than an IP Address.

This also solves the problem of having a dynamic IP address. With a dynamic IP address, your IP address may change whenever you connect, which makes it difficult to connect to you.

### The Service works as follows:

1. You must register for the service at <http://www.dyndns.org> (Registration is free). Your password will be E-mailed to you.
2. After registration, use the "Create New Host" option (at [www.dyndns.org](http://www.dyndns.org)) to request your desired Domain name.
3. Enter your data from [www.dyndns.org](http://www.dyndns.org) in the LevelOne Broadband Router's DDNS screen.
4. The LevelOne Broadband Router will then automatically ensure that your current IP Address is recorded at <http://www.dyndns.org>
5. From the Internet, users will be able to connect to your Virtual Servers (or DMZ PC) using your Domain name, as shown on this screen.

## Dynamic DNS Screen

Select *Advanced* on the main menu, then *Dynamic DNS*, to see a screen like the following:

**DDNS (Dynamic DNS)**

**DDNS Service** Dynamic DNS allows you to provide Internet users with a domain name (instead of an IP Address) to access your Virtual Servers.

Register for this FREE service at <http://www.dyndns.org>

**DDNS Data** User name is set when you register, your password is E-mailed to you.

User Name:

Password:

Domain Name:

Domain name allocated to you by [www.dyndns.org](http://www.dyndns.org)

DDNS Status:

Save Cancel Help

**Figure 43: DDNS Screen**

## Data - Dynamic DNS Screen

DDNS Service	
<b>DDNS Service</b>	<ul style="list-style-type: none"> <li>You must sign up first to create a new account before using the service. The service is free.</li> <li>Click this link to connect to the <a href="http://www.dyndns.org">www.dyndns.org</a> Web site.</li> <li>Your initial password will be E-mailed to you; you can change this later if you wish.</li> <li>After registration, use the "Create New Host" link (on the <a href="http://www.dyndns.org">www.dyndns.org</a> Web site) to request a domain name.</li> </ul>
DDNS Data	
<b>User Name</b>	Enter the "User name" specified at the <a href="http://www.dyndns.org">www.dyndns.org</a> Web site when you registered.
<b>Password</b>	Enter your current password for <a href="http://www.dyndns.org">www.dyndns.org</a>
<b>Domain Name</b>	<ul style="list-style-type: none"> <li>Enter your domain name, as allocated at <a href="http://www.dyndns.org">www.dyndns.org</a>.</li> <li>The name should consist only of letters and the hyphen (dash). Using any other characters may cause problems..</li> </ul>
<b>DDNS Status</b>	<p>This message is returned by the DDNS Server at <a href="http://www.dyndns.org">www.dyndns.org</a></p> <ul style="list-style-type: none"> <li>Normally, this message should be "Update successful" (current IP address was updated on the <a href="http://www.dyndns.org">www.dyndns.org</a> server).</li> <li>If the message is "No host", this indicates the host name entered was not allocated to you. You need to connect to <a href="http://www.dyndns.org">www.dyndns.org</a> and correct this problem.</li> </ul>

## Firmware Upgrade

The firmware (software) in the LevelOne Broadband Router can be upgraded using your Web Browser.

You must first download the upgrade file, then select *Upgrade* on the Advanced menu. You will see a screen like the following.

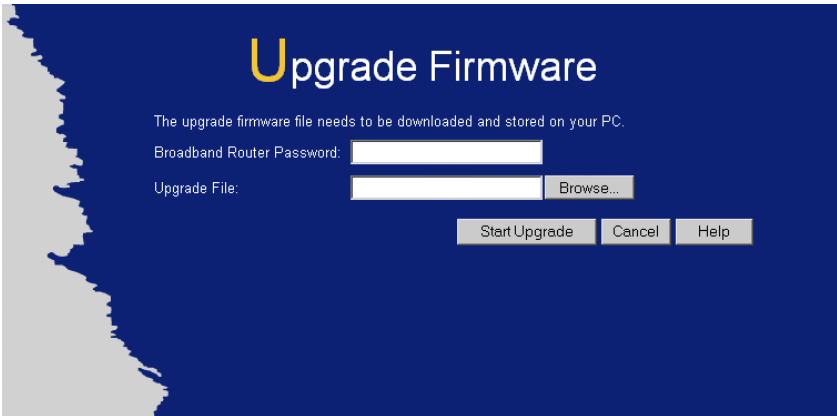


Figure 44: Upgrade Firmware Screen

### To perform the Firmware Upgrade:

1. Click the "Browse" button and navigate to the location of the upgrade file.
2. Select the upgrade file. Its name will appear in the *Upgrade File* field
3. Click the "Start Upgrade" button to commence the firmware upgrade.



**The LevelOne Broadband Router is unavailable during the upgrade process, and must restart when the upgrade is completed. Any connections to or through the LevelOne Broadband Router will be lost.**

## Chapter 7

# Advanced Configuration



*This Chapter explains the settings available via the Advanced configuration section of the "Advanced" menu.*

## Overview

Normally, it is not necessary to use these screens, or change any settings. These screens and settings are provided to deal with non-standard situations, or to provide additional options for advanced users.

The settings available are:

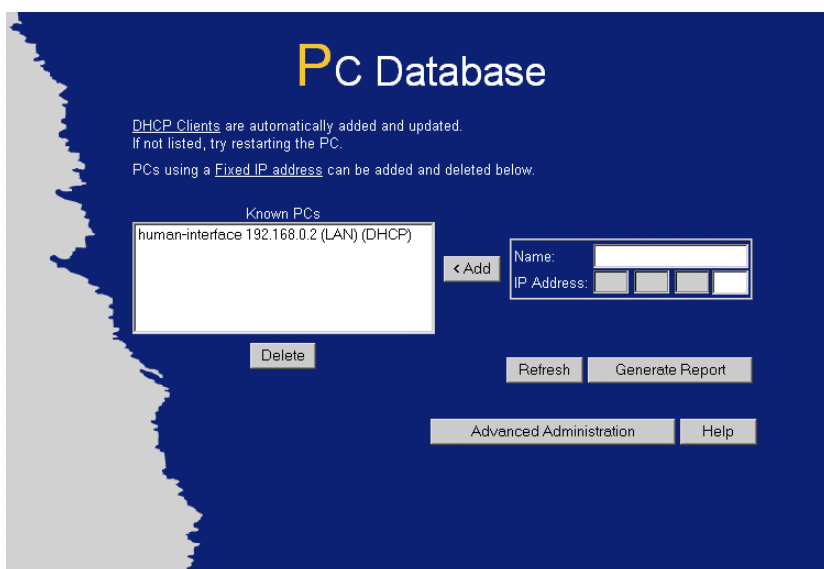
- |                                  |  |
|----------------------------------|--|
| <b>PC Database</b>               | This is the list of PCs shown when you select the "DMZ PC" or a "Virtual Server". This database is maintained automatically, but you can add and delete entries for PCs which use a Fixed (Static) IP Address. |
| <b>Options</b>                   | Various options, such as backup DNS, UPnP, and enable TFTP firmware upgrade option.  |
| <b>Security</b>                  | Firewall and other security-related settings.  |
| <b>Logs</b>                      | View or clear all logs, set E-Mailing of log files.  |
| <b>Printer Port (FBR-1403TX)</b> | On the FBR-1403TX, you can configure Logical Printers for use under Unix. If not using LPD printing under Unix, these settings have no effect.   |
| <b>MAC Address</b>               | Set the MAC (hardware) address used on the Internet (WAN port) interface. This is required only if your ISP has recorded the MAC (hardware) address you should use.  |
| <b>Routing</b>                   | Only required if your LAN has other Routers or Gateways.   |

## PC Database

The PC Database is used whenever you need to select a PC (e.g. for the "DMZ" PC). It eliminates the need to enter IP addresses. Also, you do not need to use fixed IP addresses on your LAN.

### PC Database Screen

An example PC Database screen is shown below.



**Figure 45: PC Database**

- PCs which are "DHCP Clients" are automatically added to the database, and updated as required.
- By default, non-Server versions of Windows act as "DHCP Clients"; this setting is called "Obtain an IP Address automatically".
- The LevelOne Broadband Router uses the "Hardware Address" to identify each PC, not the name or IP address. The "Hardware Address" can only change if you change the PC's network card or adapter.
- This system means you do NOT need to use Fixed (static) IP addresses on your LAN. However, you can add PCs using Fixed (static) IP Addresses to the PC database if required.

## Data - PC Database Screen

<b>Known PCs</b>	This lists all current entries. Data displayed is <i>name (IP Address) type</i> . The "type" indicates whether the PC is connected to the LAN.
<b>Name</b>	If adding a new PC to the list, enter its name here. It is best if this matches the PC's "hostname".
<b>IP Address</b>	Enter the IP Address of the PC. The PC will be sent a "ping" to determine its hardware address. If the PC is not available (not connected, or not powered On) you will not be able to add it.
<b>Buttons</b>	
<b>Add</b>	This will add the new PC to the list. The PC will be sent a "ping" to determine its hardware address. If the PC is not available (not connected, or not powered On) you will not be able to add it.
<b>Delete</b>	Delete the selected PC from the list. This should be done in 2 situations: <ul style="list-style-type: none"> <li>• The PC has been removed from your LAN.</li> <li>• The entry is incorrect.</li> </ul>
<b>Refresh</b>	Update the data on screen.
<b>Generate Report</b>	Display a read-only list showing full details of all entries in the PC database.
<b>Advanced Administration</b>	View the <i>Advanced</i> version of the PC database screen. See below for details.



## PC Database (Admin)

This screen is displayed if the "Advanced Administration" button on the *PC Database* is clicked. It provides more control than the standard *PC Database* screen.

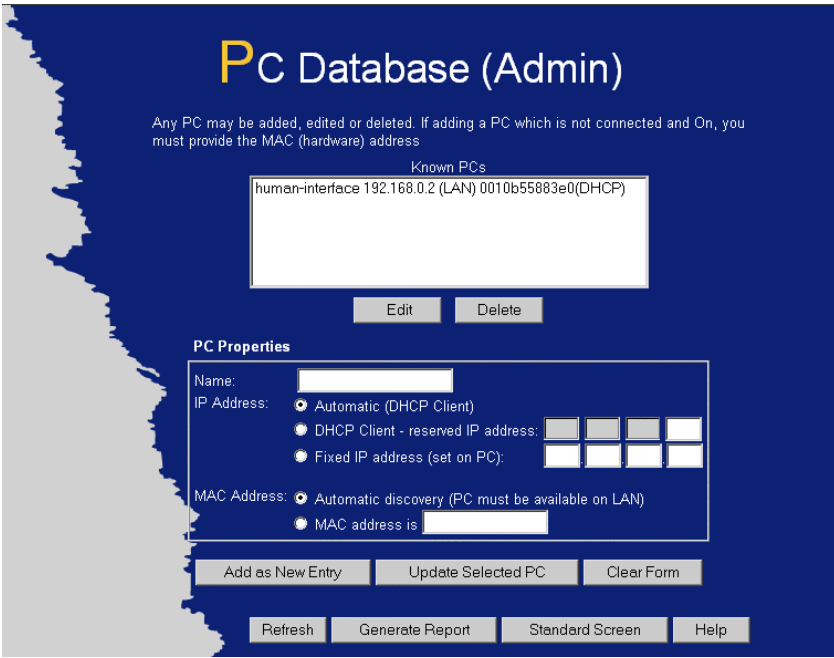


Figure 46: PC Database (Admin)

### Data - PC Database ( Admin) Screen

<b>Known PCs</b>	This lists all current entries. Data displayed is <i>name (IP Address) type</i> . The "type" indicates whether the PC is connected to the LAN.
<b>PC Properties</b>	
<b>Name</b>	If adding a new PC to the list, enter its name here. It is best if this matches the PC's "hostname".
<b>IP Address</b>	<p>Select the appropriate option:</p> <ul style="list-style-type: none"> <li>• <b>Automatic</b> - The PC is set to be a DHCP client (Windows: "Obtain an IP address automatically"). The LevelOne Broadband Router will allocate an IP address to this PC when requested to do so. The IP address could change, but normally won't.</li> <li>• <b>DCHP Client - Reserved IP Address</b> - Select this if the PC is set to be a DCHP client, and you wish to guarantee that the LevelOne Broadband Router will always allocate the same IP Address to this PC. Enter the required IP address. Only the last field is required; the other fields must match the LevelOne Broadband Router's IP address.</li> <li>• <b>Fixed IP Address</b> - Select this if the PC is using a Fixed (Static) IP address. Enter the IP address allocated to the PC. (The PC must be configured to use this IP address.)</li> </ul>

<b>MAC Address</b>	<p>Select the appropriate option</p> <ul style="list-style-type: none"> <li>• <b>Automatic discovery</b> - Select this to have the LevelOne Broadband Router contact the PC and find its MAC address. This is only possible if the PC is connected to the LAN and powered On.</li> <li>• <b>MAC is</b> - Enter the MAC address on the PC. The MAC address is also called the "Hardware Address", "Physical Address", or "Network Adapter Address". The LevelOne Broadband Router uses this to provide a unique identifier for each PC. Because of this, the MAC address can NOT be left blank.</li> </ul>
<b>Buttons</b>	
<b>Add as New Entry</b>	<p>Add a new PC to the list, using the data in the "Properties" box. If "Automatic discovery" (for MAC address) is selected, the PC will be sent a "ping" to determine its hardware address. This will fail unless the PC is connected to the LAN, and powered on.</p>
<b>Update Selected PC</b>	<p>Update (modify) the selected PC, using the data in the "Properties" box.</p>
<b>Clear Form</b>	<p>Clear the "Properties" box, ready for entering data for a new PC.</p>
<b>Refresh</b>	<p>Update the data on screen.</p>
<b>Generate Report</b>	<p>Display a read-only list showing full details of all entries in the PC database.</p>
<b>Standard Screen</b>	<p>Click this to view the standard "PC Database" screen.</p>

## Options

This screen allows advanced users to enter or change a number of settings. For normal operation, there is no need to use this screen or change any settings.

An example Options screen is shown below.

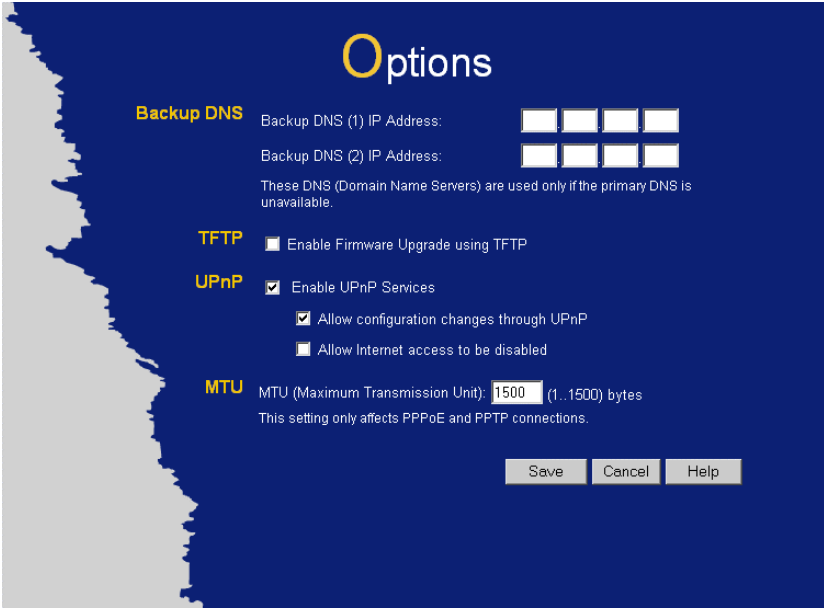


Figure 47: Options Screen

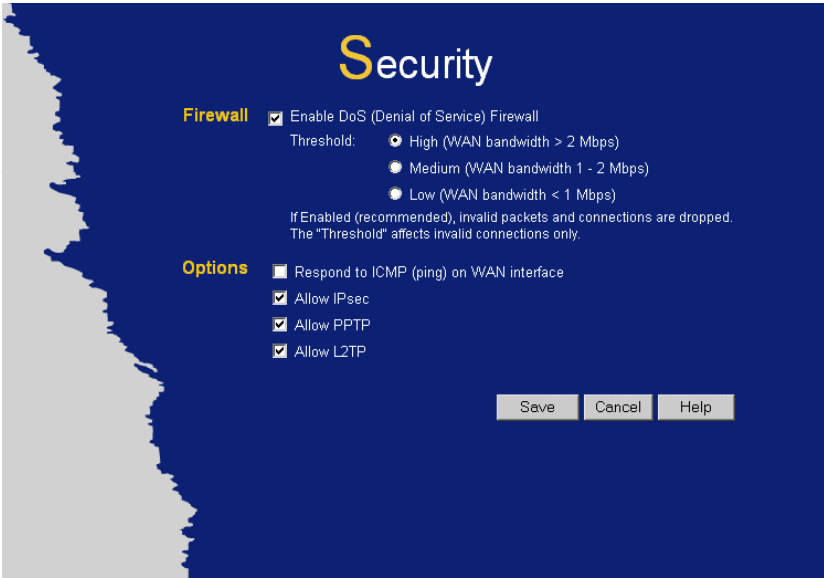
### Data - Options Screen

Backup DNS	
IP Address	Enter the IP Address of the DNS (Domain Name Servers) here. These DNS will be used only if the primary DNS is unavailable.
TFTP	
Enable Firmware Upgrade using TFTP	<ul style="list-style-type: none"> <li>If enabled, TFTP (Trivial FTP) can be used to upgrade the firmware in this device. This is normally not required; a Windows utility is available for this purpose.</li> <li>You must obtain the firmware upgrade file first; instructions for using TFTP will be available with the upgrade.</li> </ul>
UPnP	
Enable UPnP Services	<ul style="list-style-type: none"> <li>UPnP (Universal Plug and Play) allows automatic discovery and configuration of equipment attached to your LAN. UPnP is by supported by Windows ME, XP, or later.</li> <li>If Enabled, this device will be visible via UPnP.</li> <li>If Disabled, this device will not be visible via UPnP.</li> </ul>

<b>Allow Configuration...</b>	<ul style="list-style-type: none"> <li>• If checked, then UPnP users can change the configuration.</li> <li>• If Disabled, UPnP users can only view the configuration. But currently, this restriction only applies to users running Windows XP, who access the <i>Properties</i> via UPnP. (e.g. Right - click the LevelOne Broadband Router in <i>My Network Places</i>, and select <i>Properties</i>)</li> </ul>
<b>Allow Internet access to be disabled</b>	<ul style="list-style-type: none"> <li>• If checked, then UPnP users can disable Internet access via this device.</li> <li>• If Disabled, UPnP users can NOT disable Internet access via this device. But currently, this restriction only applies to users running Windows XP, who access the <i>Properties</i> via UPnP. (e.g. Right - click the LevelOne Broadband Router in <i>My Network Places</i>, and select <i>Properties</i>)</li> </ul>
<b>MTU</b>	
<b>MTU size</b>	<p>MTU (Maximum Transmission Unit) value should only be changed if advised to do so by Technical Support.</p> <ul style="list-style-type: none"> <li>• Enter a value between 1 and 1500.</li> <li>• This device will still auto-negotiate with the remote server, to set the MTU size. The smaller of the 2 values (auto-negotiated, or entered here) will be used.</li> <li>• For direct connections (not PPPoE or PPTP), the MTU used is always 1500.</li> </ul>

# Security

This screen allows you to set Firewall and other security-related options.



**Figure 48: Security Screen**

## Data - Security Screen

Firewall	
<b>Enable DoS Firewall</b>	<p>If enabled, DoS (Denial of Service) attacks will be detected and blocked. The default is enabled. It is strongly recommended that this setting be left enabled.</p> <p><b>Note:</b></p> <ul style="list-style-type: none"> <li>• A DoS attack does not attempt to steal data or damage your PCs, but overloads your Internet connection so you can not use it - the service is unavailable.</li> <li>• This device uses "Stateful Inspection" technology. This system can detect situations where individual TCP/IP packets are valid, but collectively they become a DoS attack.</li> </ul>
<b>Threshold</b>	<p>This setting affects the number of "half-open" connections allowed.</p> <ul style="list-style-type: none"> <li>• A "half-open" connection arises when a remote client contacts the Server with a connection request, but then does not reply to the Server's response.</li> <li>• While the optimum number of "half-open" connections allowed (the "Threshold") depends on many factors, the most important factor is the available bandwidth of your Internet connection.</li> <li>• Select the setting to match the bandwidth of your Internet connection.</li> </ul>

Options	
<b>Respond to ICMP</b>	<p>The ICMP protocol is used by the "ping" and "traceroute" programs, and by network monitoring and diagnostic programs.</p> <ul style="list-style-type: none"><li>• If checked, the LevelOne Broadband Router will respond to ICMP packets received from the Internet.</li><li>• If not checked, ICMP packets from the Internet will be ignored. Disabling this option provides a slight increase in security.</li></ul>
<b>Allow IPsec</b>	<p>The IPsec protocol is used to establish a secure connection, and is widely used by VPN (Virtual Private Networking) programs.</p> <ul style="list-style-type: none"><li>• If checked, IPsec connections are allowed.</li><li>• If not checked, IPsec connections are blocked.</li></ul>
<b>Allow PPTP</b>	<p>PPTP (Point to Point Tunneling Protocol) is widely used by VPN (Virtual Private Networking) programs.</p> <ul style="list-style-type: none"><li>• If checked, PPTP connections are allowed.</li><li>• If not checked, PPTP connections are blocked.</li></ul>
<b>Allow L2TP</b>	<p>L2TP is a protocol developed by Cisco for VPNs (Virtual Private Networks).</p> <ul style="list-style-type: none"><li>• If checked, L2TP connections are allowed.</li><li>• If not checked, L2TP connections are blocked.</li></ul>

## Logs

The Logs record various types of activity on the LevelOne Broadband Router. This data is useful for troubleshooting, but enabling all logs will generate a large amount of data and adversely affect performance.

Since only a limited amount of log data can be stored in the LevelOne Broadband Router, log data can also be E-mailed to your PC.

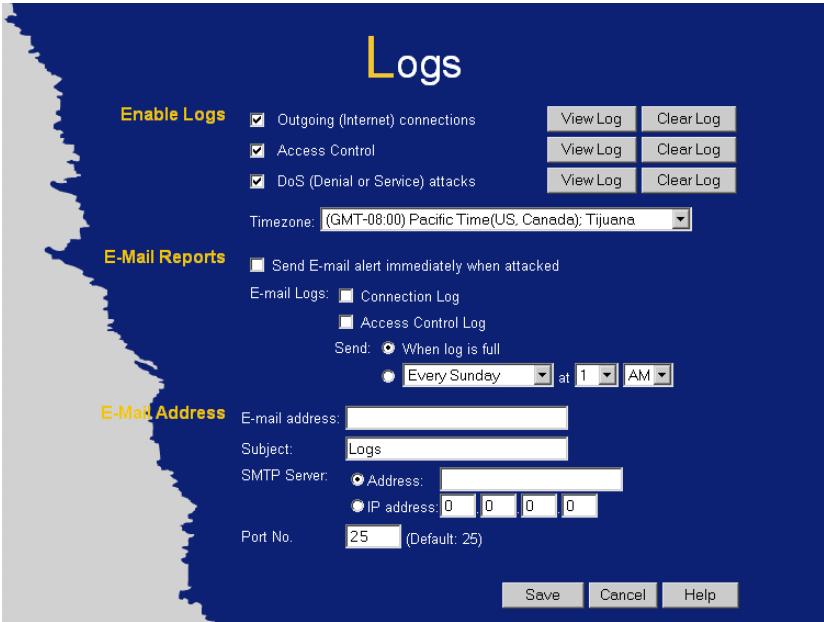


Figure 49: Logs Screen

### Data - Logs Screen

Enable Logs	
<b>Outgoing Connections</b>	If selected, Outgoing Internet connections are logged. Normally, the (Internet) "Destination" will be shown as an IP address. But if the "URL Filter" is enabled, the "Destination" will be shown as a URL.
<b>Access Control</b>	If enabled, the log will include attempted outgoing connections which have been blocked by the "Access Control" feature.
<b>DoS Attacks</b>	If enabled, this log will show details of DoS (Denial of Service) attacks which have been blocked by the built-in Firewall.
<b>Timezone</b>	Select the correct Timezone for your location. This is required for the date/time shown on the logs to be correct.
E-Mail Reports	
<b>Send E-mail alert</b>	If enabled, an E-mail will be sent immediately if a DoS (Denial of Service) attack is detected. If enabled, the E-mail address information must be provided.

<b>E-mail Logs</b>	You can choose to have the logs E-mailed to you, by enabling either or both checkboxes. If enabled, the Log will sent to the specified E-mail address. The interval between E-mails is determined by the "Send" setting.
<b>Send</b>	<p>Select the desired option for sending the log by E-mail.</p> <ul style="list-style-type: none"> <li>• <b>When log is full</b> - The time is not fixed. The log will be sent when the log is full, which will depend on the volume of traffic.</li> <li>• <b>Every day, Every Monday ...</b> - The log is sent on the interval specified. <ul style="list-style-type: none"> <li>• If "Every day" is selected, the log is sent at the time specified.</li> <li>• If the day is specified, the log is sent once per week, on the specified day.</li> <li>• Select the time of day you wish the E-mail to be sent.</li> <li>• If the log is full before the time specified to send it, it will be sent regardless.</li> </ul> </li> </ul>
<b>E-Mail Address</b>	
<b>E-mail Address</b>	Enter the E-mail address the Log is to be sent to. The E-mail will also show this address as the Sender's address.
<b>Subject</b>	Enter the text string to be shown in the "Subject" field for the E-mail.
<b>SMTP Server</b>	Enter the address or IP address of the SMTP (Simple Mail Transport Protocol) Server you use for outgoing E-mail.
<b>Port No.</b>	Enter the port number used to connect to the SMTP Server. The default value is 25.



## Printer Port (FBR-1403TX only)

On the FBR-1403TX, the following screen is available. These settings are only useful if using LPD printing under Unix. Normally, these settings do not need to be changed.

No.	Pre-string (HEX)	Post-string (HEX)	LF to CR/LF
L1	<input type="text"/>	<input type="text"/>	<input type="checkbox"/> Enable
L2	<input type="text"/>	<input type="text"/>	<input type="checkbox"/> Enable
L3	<input type="text"/>	<input type="text"/>	<input type="checkbox"/> Enable

Buttons: Save, Cancel, Help

Figure 50: Printer Port Screen

### Data - Printer Port Screen

Logical Printers	
<b>No (L1, L2, L3)</b>	<p>Logical printer configuration is only required if using LPD printing under Linux or Unix. Otherwise, these settings are ignored</p> <p>There are 3 Logical Printers (Ports), named L1, L2, and L3.</p> <p>These names can not be changed, and must be used when selecting the logical printer from your Unix system.</p>
<b>Pre-string (HEX)</b>	Enter (in HEX) the series of printer commands to be sent to the attached printer BEFORE each print job.
<b>Post-string (HEX)</b>	Enter (in HEX) the series of printer commands to be sent to the attached printer AFTER each print job.
<b>LF to CR/LF</b>	If checked, Unix-style LF (line feed) characters at the end of each line will be converted to CR/LF (carriage return/line feed) pairs, as used in MSDOS and Windows.

## MAC Address

The MAC (hardware) address is a low-level network identifier. It may be called "MAC Address", "Hardware Address", or "Physical Address". On a PC, this address is associated with the Network card or adapter. The address on the *MAC Address* screen is the address on the Internet (WAN port) interface, and has no effect on the LAN interface.

- If your ISP asks for the "Network Adapter Address", "Physical Address", "Hardware Address", or "MAC Address" for the PC the DSL/Cable modem is connected to, provide this value.
- If your ISP has already recorded a MAC address, you can change the address used by the LevelOne Broadband Router to match the address recorded by your ISP.

### MAC Address Screen

Select *MAC Address* from the *Advanced* menu to reach a screen like the example below.



**Figure 51: MAC address Screen**

### Data - MAC address Screen

<b>MAC (hardware) Address</b>	The current MAC (hardware) address is displayed.  If your ISP has recorded a Hardware Address, you can "spoof" that address by entering it in the address field. The hardware address consists of 12 characters, where each character is a digit (0..9) or a character between A and F.
<b>Buttons</b>	
<b>Default</b>	Inserts the default MAC address into the MAC address field. You must click "Save" to actually change the address used.
<b>Copy from PC</b>	Inserts the MAC address from your PC into the MAC address field. You must click "Save" to actually change the address used.
<b>Save</b>	Save your changes to the LevelOne Broadband Router.
<b>Cancel</b>	Reverse any changes made since the last "Save".



**If the MAC address is changed, the LevelOne Broadband Router must restart.**

## Routing

### Overview

- If you don't have other Routers or Gateways on your LAN, you can ignore the "Routing" page completely.
- If the LevelOne Broadband Router is only acting as a Gateway for the local LAN segment, ignore the "Routing" page even if your LAN has other Routers.
- If your LAN has a standard Router (e.g. Cisco) on your LAN, and the LevelOne Broadband Router is to act as a Gateway for all LAN segments, enable RIP (Routing Information Protocol) and ignore the Static Routing table.
- If your LAN has other Gateways and Routers, and you wish to control which LAN segments use each Gateway, do NOT enable RIP (Routing Information Protocol). Configure the Static Routing table instead. (You also need to configure the other Routers.)
- If using Windows 2000 Data center Server as a software Router, enable RIP on the LevelOne Broadband Router, and ensure the following Windows 2000 settings are correct:
  - Open *Routing and Remote Access*
  - In the console tree, select *Routing and Remote Access*, *[server name]*, *IP Routing*, *RIP*
  - In the "Details" pane, right-click the interface you want to configure for RIP version 2, and then click "Properties".
  - On the "General" tab, set *Outgoing packet protocol* to "RIP version 2 broadcast", and *Incoming packet protocol* to "RIP version 1 and 2".

### Routing Screen

The routing table is accessed by the *Routing* link on the *Advanced* screen.

#### Using this Screen

Generally, you will use either RIP (Routing Information Protocol) OR the Static Routing Table, as explained above, although it is possible to use both methods simultaneously.

#### Static Routing Table

- If RIP is not used, an entry in the routing table is required for each LAN segment on your Network, other than the segment to which this device is attached.
- The other Routers must also be configured. See *Configuring Other Routers on your LAN* later in this chapter for further details and an example.

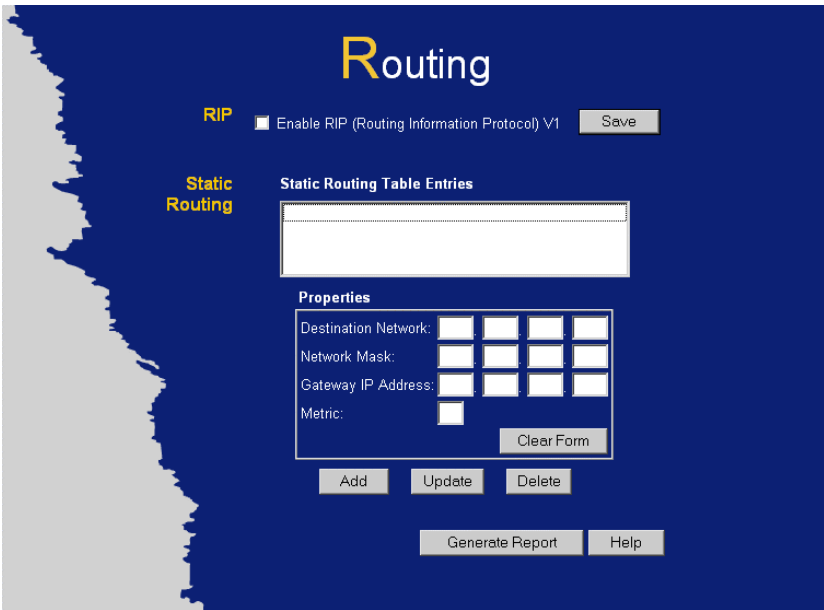


Figure 52: Routing Screen

Data - Routing Screen

RIP	
<b>Enable RIP</b>	<p>Check this to enable the RIP (Routing Information Protocol) feature of the LevelOne Broadband Router.</p> <p>The LevelOne Broadband Router supports RIP 1 only.</p>
Static Routing	
<b>Static Routing Table Entries</b>	<p>This list shows all entries in the Routing Table.</p> <ul style="list-style-type: none"> <li>The "Properties" area shows details of the selected item in the list.</li> <li>Change any the properties as required, then click the "Update" button to save the changes to the selected entry.</li> </ul>
<b>Properties</b>	<ul style="list-style-type: none"> <li><b>Destination Network</b> - The network address of the remote LAN segment. For standard class "C" LANs, the network address is the first 3 fields of the Destination IP Address. The 4th (last) field can be left at 0.</li> <li><b>Network Mask</b> - The Network Mask for the remote LAN segment. For class "C" networks, the default mask is 255.255.255.0</li> <li><b>Gateway IP Address</b> - The IP Address of the Gateway or Router which the LevelOne Broadband Router must use to communicate with the destination above. (NOT the router attached to the remote segment.)</li> <li><b>Metric</b> - The number of "hops" (routers) to pass through to reach the remote LAN segment. The shortest path will be used. The default value is 1.</li> </ul>
Buttons	
<b>Save</b>	Save the RIP setting. This has no effect on the Static Routing Table.

<b>Add</b>	Add a new entry to the Static Routing table, using the data shown in the "Properties" area on screen. The entry selected in the list is ignored, and has no effect.
<b>Update</b>	Update the current Static Routing Table entry, using the data shown in the "Properties" area on screen.
<b>Delete</b>	Delete the current Static Routing Table entry.
<b>Clear Form</b>	Clear all data from the "Properties" area, ready for input of a new entry for the Static Routing table.
<b>Generate Report</b>	Generate a read-only list of all entries in the Static Routing table.

## Configuring Other Routers on your LAN

It is essential that all IP packets for devices not on the local LAN be passed to the LevelOne Broadband Router, so that they can be forwarded to the external LAN, WAN, or Internet. To achieve this, the local LAN must be configured to use the LevelOne Broadband Router as the *Default Route* or *Default Gateway*.

### Local Router

The local router is the Router installed on the same LAN segment as the LevelOne Broadband Router. This router requires that the *Default Route* is the LevelOne Broadband Router itself. Typically, routers have a special entry for the *Default Route*. It should be configured as follows.

<b>Destination IP Address</b>	Normally 0.0.0.0, but check your router documentation.
<b>Network Mask</b>	Normally 0.0.0.0, but check your router documentation.
<b>Gateway IP Address</b>	The IP Address of the LevelOne Broadband Router.
<b>Metric</b>	1

### Other Routers on the Local LAN

Other routers on the local LAN must use the LevelOne Broadband Router's *Local Router* as the *Default Route*. The entries will be the same as the LevelOne Broadband Router's local router, with the exception of the *Gateway IP Address*.

- For a router with a direct connection to the LevelOne Broadband Router's local Router, the *Gateway IP Address* is the address of the LevelOne Broadband Router's local router.
- For routers which must forward packets to another router before reaching the LevelOne Broadband Router's local router, the *Gateway IP Address* is the address of the intermediate router.

## Static Routing - Example

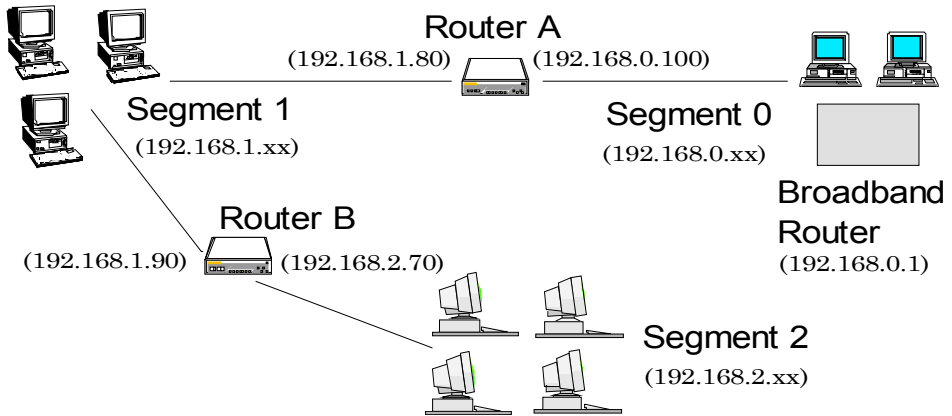


Figure 53: Routing Example

### For the LevelOne Broadband Router's Routing Table

For the LAN shown above, with 2 routers and 3 LAN segments, the LevelOne Broadband Router requires 2 entries as follows.

Entry 1 (Segment 1)	
Destination IP Address	192.168.1.0
Network Mask	255.255.255.0 (Standard Class C)
Gateway IP Address	192.168.0.100 (LevelOne Broadband Router's local Router)
Metric	2
Entry 2 (Segment 2)	
Destination IP Address	192.168.2.0
Network Mask	255.255.255.0 (Standard Class C)
Gateway IP Address	192.168.0.100
Metric	3

### For Router A's Default Route

Destination IP Address	0.0.0.0
Network Mask	0.0.0.0
Gateway IP Address	192.168.0.1 (LevelOne Broadband Router's IP Address)

### For Router B's Default Route

Destination IP Address	0.0.0.0
Network Mask	0.0.0.0
Gateway IP Address	192.168.1.80 (LevelOne Broadband Router's local router)

# Appendix A

## Troubleshooting



*This Appendix covers the most likely problems and their solutions.*

### Overview

This chapter covers some common problems that may be encountered while using the LevelOne Broadband Router and some possible solutions to them. If you follow the suggested steps and the LevelOne Broadband Router still does not function properly, contact your dealer for further advice.

### General Problems

**Problem 1:** Can't connect to the LevelOne Broadband Router to configure it.

**Solution 1:** Check the following:

- The LevelOne Broadband Router is properly installed, LAN connections are OK, and it is powered ON.
- Ensure that your PC and the LevelOne Broadband Router are on the same network segment. (If you don't have a router, this must be the case.)
- If your PC is set to "Obtain an IP Address automatically" (DHCP client), restart it.
- If your PC uses a Fixed (Static) IP address, ensure that it is using an IP Address within the range 192.168.0.2 to 192.168.0.254 and thus compatible with the LevelOne Broadband Router's default IP Address of 192.168.0.1.

Also, the Network Mask should be set to 255.255.255.0 to match the LevelOne Broadband Router.

In Windows, you can check these settings by using *Control Panel-Network* to check the *Properties* for the TCP/IP protocol.

### Internet Access

**Problem 1:** When I enter a URL or IP address I get a time out error.

**Solution 1:** A number of things could be causing this. Try the following troubleshooting steps.

- Check if other PCs work. If they do, ensure that your PCs IP settings are correct. If using a Fixed (Static) IP Address, check the Network Mask, Default gateway and DNS as well as the IP Address.
- If the PCs are configured correctly, but still not working, check the LevelOne Broadband Router. Ensure that it is connected and ON. Connect to it and check its settings. (If you can't connect to it, check the LAN and power connections.)
- If the LevelOne Broadband Router is configured correctly, check your Internet connection (DSL/Cable modem etc) to see that it is working

correctly.

**Problem 2:** **Some applications do not run properly when using the LevelOne Broadband Router.**

**Solution 2:** The LevelOne Broadband Router processes the data passing through it, so it is not transparent.

Use the *Special Applications* feature to allow the use of Internet applications which do not function correctly.

If this does solve the problem you can use the *DMZ* function. This should work with almost every application, but:

- It is a security risk, since the firewall is disabled.
- Only one (1) PC can use this feature.

## Printing (FBR-1403TX)

**Problem 1:** **When I tried to install the Printing software for Peer-to-Peer printing, I received an error message and the installation was aborted.**

**Solution 1:** This may be caused by an existing installation of the printer port software. Before attempting another installation:

- Remove the existing installation
- Restart your PC

**To remove an existing printer port installation:**

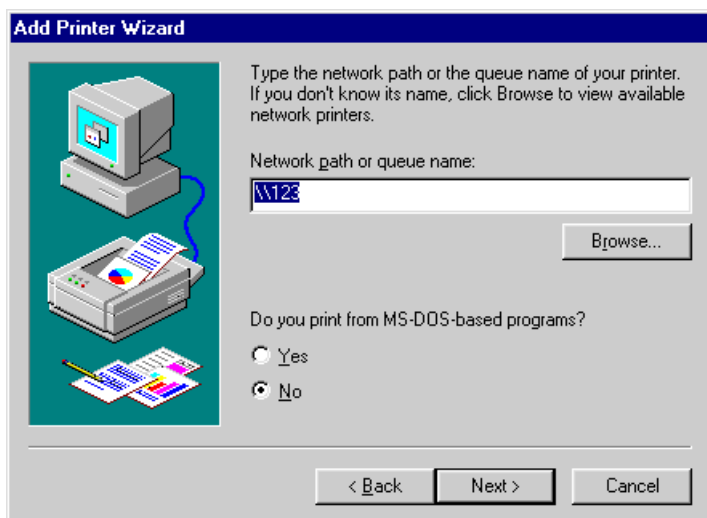
1. Open Start - Settings - Control Panel - Add/Remove Programs
2. Look for an entry with a name like "Shared Port", "Shared Printer Port", "Print Server Driver" or "Print Server Port".
3. Select this item, click "Add/Remove", and confirm the deletion.

**Problem 2:** **I am using Windows 95, and the Printing software installed and ran, but when I selected a port on a LevelOne Broadband Router and clicked "Add", the printer was not installed.**

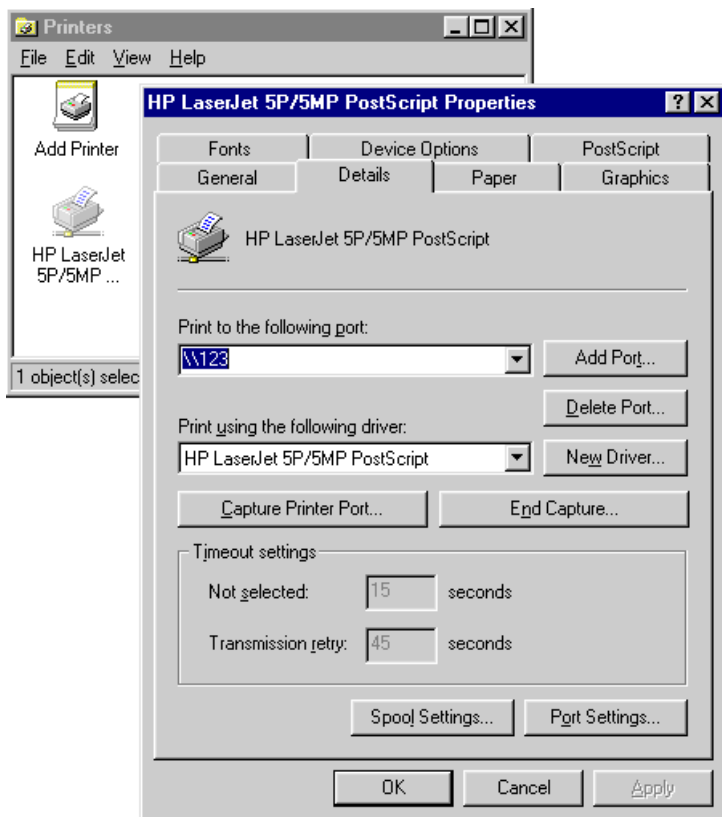
**Solution 2:** Try installing the printer using the standard Windows tools, as follows:

1. Start the *Add Printer* Wizard.
2. Select *Network Printer* when prompted "How is the printer attached to your Computer?", and click Next.
3. When prompted for the Network Path or Queue, enter a dummy value such as \\123, as shown below. (Do NOT select *Yes* for "Do you print for MS-DOS programs?")

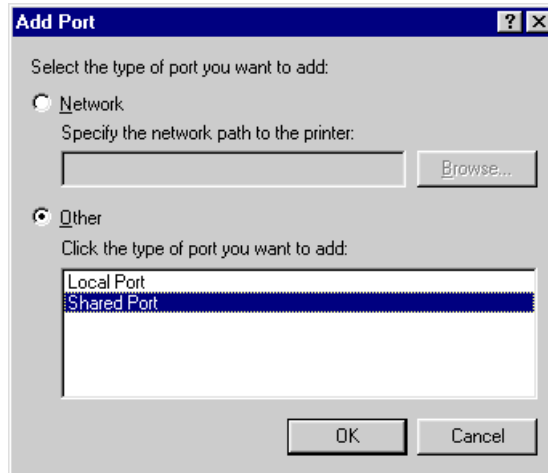




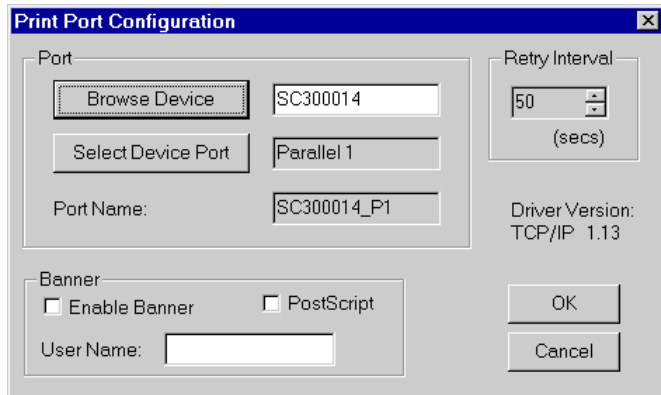
4. The printer wizard will display a message stating that “The Network Printer is off-line”. This is OK. Continue the Add Printer Wizard until finished.
5. When finished, go to *Control Panel-Printers*. The printer icon will be grayed out indicating the printer is not ready.
6. Right-click the Printer, and select *Properties*. Then select the *Details* tab, as shown below.



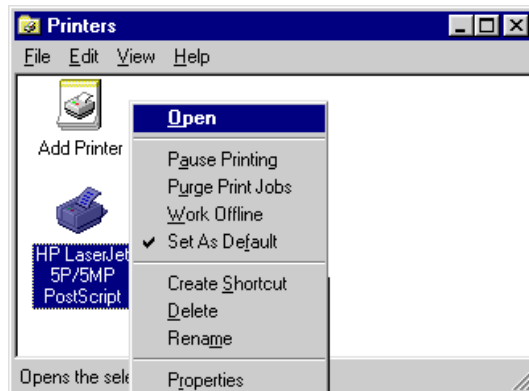
7. Click the *Add Port* button. On the resulting screen, select *Other*, then *Shared Port*, as the port to add, as shown below.



8. Click OK to see the *Print Port Configuration* screen, as shown below.



9. Click the *Browse Device* button, select the desired Multi-function LevelOne Broadband Router, and click OK.
10. Click OK to return to the Printers folders, and right-click on the Printer. Ensure that the *Work off-line* option is NOT checked.



The Printer should no longer be grayed out, and is ready for use.

# Appendix B

## Specifications



### FBR-1402TX

Model	FBR-1402TX LevelOne 1 Port Broadband Router with 4 LAN Port
Dimensions	140mm(W) * 85mm(D) * 27mm(H)
Operating Temperature	0° C to 40° C
Storage Temperature	-10° C to 70° C
Network Protocol:	TCP/IP
Network Interface:	5 Ethernet: 4 * 10/100BaseT (RJ45) LAN connection 1 * 10/100BaseT (RJ45) for WAN
LEDs	11
Power Adapter	12 V DC External

#### FCC Statement:

This device complies with Part 15 of the FCC Rules. Operation is subject to the following two conditions:

- (1) This device may not cause harmful interference.
- (2) This device must accept any interference received, including interference that may cause undesired operation.

#### CE Marking Warning

This is a Class B product. In a domestic environment this product may cause radio interference in which case the user may be required to take adequate measures.

## FBR-1403TX

Model	FBR-1403TX LevelOne 1 Port Broadband Router with 4 LAN Port, Printer Server
Dimensions	140mm(W) * 85mm(D) * 27mm(H)
Operating Temperature	0° C to 40° C
Storage Temperature	-10° C to 70° C
Network Protocol:	TCP/IP
Network Interface:	5 Ethernet: 4 * 10/100BaseT (RJ45) LAN connection 1 * 10/100BaseT (RJ45) for WAN
Printer Port	1 * parallel printer port
LEDs	13
Power Adapter	12 V DC External

### FCC Statement:

This device complies with Part 15 of the FCC Rules. Operation is subject to the following two conditions:

- (3) This device may not cause harmful interference.
- (4) This device must accept any interference received, including interference that may cause undesired operation.

### CE Marking Warning

This is a Class B product. In a domestic environment this product may cause radio interference in which case the user may be required to take adequate measures.