

LevelOne FBR-1700TX

7Port Broadband Router for ADSL/Cable Modem



FBR-1700TX

*7Port Broadband Router
for ADSL/Cable Modem*

User's Guide

TABLE OF CONTENTS

CHAPTER 1 INTRODUCTION	1
FBR-1700TX Features	2
Package Contents	4
Physical Details.....	5
CHAPTER 2 INSTALLATION.....	10
Requirements.....	10
Procedure.....	11
CHAPTER 3 CONFIGURATION	13
Overview	13
Configuration Program	15
Home Screen	17
LAN Port Screen	18
WAN Configuration.....	21
WAN Status	26
Device/LAN Status	31
CHAPTER 4 PC CONFIGURATION	33
Overview	33
TCP/IP Settings	33
Internet Access Configuration	37
Printing Setup.....	39
Macintosh Configuration	47
CHAPTER 5 DHCP.....	48
Overview	48
What DHCP Does.....	48
Using the FBR-1700TX's DHCP Server.....	49
Using another DHCP Server	49
To Configure your PCs to use DHCP	49
CHAPTER 6 ROUTING	50
Overview	50
FBR-1700TX Configuration.....	50
Router Configuration	53
Routing Example	54

CHAPTER 7 DEVICE OPTIONS.....	56
Overview	56
Password	57
NAT (Network Address Translation)T	57
CHAPTER 8 ADVANCED INTERNET.....	58
Overview	58
Advanced Internet Screen	58
Special Internet Applications	59
Virtual Servers	63
Exposed Computer.....	69
CHAPTER 9 ACCESS CONTROL	72
Overview	72
Security Groups.....	73
Workstations.....	76
Administrator Defined Filters.....	78
APPENDIX A TROUBLESHOOTING	80
Overview	80
General Problems.....	80
Internet Access	81
APPENDIX B SPECIFICATIONS.....	82
FBR-1700TX 7 Port Broadband Router	82

P/N: 9560D400A0

Copyright © 2001. All Rights Reserved.

Document Version: 1.0

All trademarks and trade names are the properties of their respective owners.

Chapter 1

Introduction

1

This Chapter provides an overview of the FBR-1700TX's features and capabilities.

Congratulations on the purchase of your new LevelOne FBR-1700TX 7 Port Broadband Router For ADSL/Cable Modem. The FBR-1700TX is a multi-function device providing the following services:

- 7 Port Switching hub (10/100BaseT)
- Shared Internet access via an DSL or Cable modem.
- Network Printer - LAN users can share the printer attached to the FBR-1700TX.

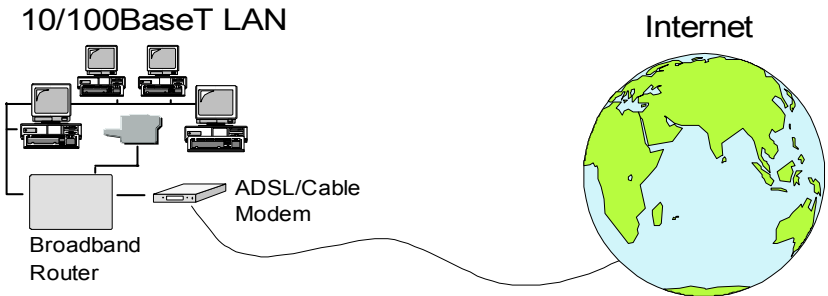


Figure 1: FBR-1700TX

The LevelOne FBR-1700TX 7 Port Broadband Router For ADSL/Cable Modem can also be used to connect your local LAN to a remote LAN or WAN, instead of providing shared Internet Access.

FBR-1700TX Features

The FBR-1700TX incorporates many advanced features, carefully designed to provide sophisticated functions while being easy to use.

LAN Features

- **7 Port Switching Hub.** The FBR-1700TX incorporates a 7 port Switching Hub. Both 10BaseT and 100BaseT connections can be used simultaneously.
- **DHCP Server Support.** Dynamic Host Configuration Protocol provides a dynamic IP address to PCs and other devices upon request. The FBR-1700TX can act as a **DHCP Server** for devices on your local LAN.
- **Multi Segment LAN Support.** LANs containing one or more segments are supported, via the FBR-1700TX's built-in static routing table. If NAT (Network Address Translation) is disabled, the FBR-1700TX will function as a static router.

Internet Access Features

- **Shared Internet Access.** All users on the LAN can access the Internet through the FBR-1700TX, using only a single external IP Address. The local (invalid) IP Addresses are hidden from external sources. This process is called NAT (Network Address Translation).
- **ADSL & Cable Modem Support.** The FBR-1700TX has a 10BaseT Ethernet port for connecting an ADSL or Cable Modem. All popular ADSL and Cable Modems are supported.
- **PPPoE Support.** Connect to your ISP using PPPoE (PPP over Ethernet), if your ISP uses this method.
- **Fixed or Dynamic IP Address.** On the WAN connection, the FBR-1700TX supports both Dynamic IP Address (IP Address is allocated on connection) and Fixed IP Address.

Configuration & Management

- ***Easy Setup.*** Use your WEB browser from anywhere on the LAN for configuration.
- ***Remote Management.*** The FBR-1700TX can be managed from a workstation anywhere on the LAN, using a WEB browser.

Advanced Internet Functions

- ***Virtual Servers.*** This feature allows Internet users to access Internet servers on your LAN. The required setup is quick and easy.
- ***User-Defined Virtual Servers.*** Internet users can access non-standard Internet Servers on your LAN by using this feature.
- ***Special Internet Applications.*** Internet applications such as Internet Videoconferencing, Telephony, Games Servers, and other special-purpose Servers are supported.
- ***Exposed Computer.*** One (1) PC on your local LAN can be configured to allow unrestricted 2-way communication with Servers or individual users on the Internet.

Security Features

- ***Configuration Data.*** Optional password protection is provided to prevent unauthorized users from modifying the configuration.
- ***Access Control Features.*** The LAN Administrator can limit Internet access by individual PCs.
- ***Firewall Protection.*** All incoming data packets are monitored and all incoming server requests are filtered, thus protecting your network from malicious attacks from external sources. (This protection is lost if NAT is disabled.)

NAT Firewall Protection

The firewall protection provided by the FBR-1700TX is an intrinsic side effect of NAT (Network Address Translation). All users on the LAN share a single external IP address. From the external viewpoint, there is no network, only a single device.

For internal users, the FBR-1700TX acts as a "transparent proxy server", translating the multiple internal IP addresses into a single external IP address.

For external requests, any attempt to connect to local resources are blocked. The FBR-1700TX will not "reverse translate" from a global IP address to a local IP address.

This type of "natural" firewall provides an impregnable barrier against malicious attacks.

Package Contents

The following items should be included:

- The LevelOne FBR-1700TX 7 Port Broadband Router For ADSL/Cable Modem Unit
- Power Adapter
- Quick Installation Guide
- CD-ROM containing the on-line manual and Print Port Driver.

If any of the above items are damaged or missing, please contact your dealer as soon as possible.

Physical Details



Figure 2: LevelOne FBR-1700TX 7 Port Broadband Router For ADSL/Cable Modem

LEDs

Power	ON - power on OFF - no power
Status (Red)	Blinks during start up. ON indicates an error condition.
WAN: Link	ON - WAN connection is established. OFF - no WAN connection.
WAN: Act	Flashing - data is being transmitted or received via the WAN port. OFF - no data is being transferred.
LAN: Act	There are 7 LEDs - one for each LAN port, and each LED could be OFF, Yellow, or Green. <ul style="list-style-type: none"> • OFF - No LAN connection on this port. • Yellow - 10BaseT connection. • Green - 100BaseT connection.

- LAN:** ON indicates the LAN connection is using Full Duplex.
Half/Full Duplex OFF indicates the LAN connection (if any) is using Half Duplex.
- Print Error** ON - Printer error detected.
OFF - No printer error detected.
- Print Act**
- OFF - no connection to printer.
 - ON - Connection to printer established.
 - Flashing - Data is being transmitted to the printer.

Rear Panel

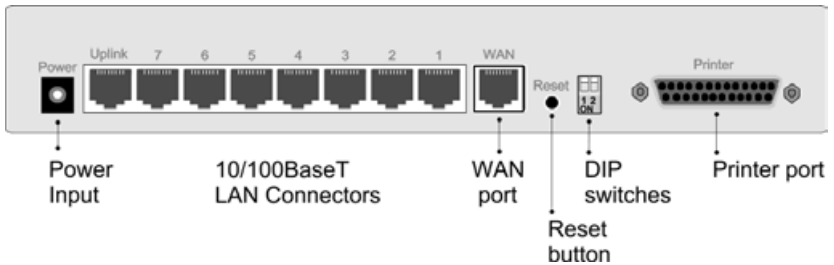


Figure 3: Rear Panel

- Power port (12V)** Connect the supplied power adapter here.
- HUB ports (10/100BaseT)** Use standard LAN cables (RJ45 connectors) to connect this port to your PCs. Both 10BaseT and 100BaseT connections can be used simultaneously.
- Use the "Uplink" port ONLY to connect to a normal port on another hub.**
- WAN port (10BaseT)** Connect the ADSL or Cable Modem here. If your modem came with a cable, use the supplied cable. Otherwise, use a standard LAN cable.

Reset Button

When pressed and released, the FBR-1700TX will reboot (restart).

This button can also be used to clear ALL data and restore ALL settings to the factory default values.

To restore the factory default values:

- Power Off
- Hold the Reset Button down while you Power On.
- Continue holding the Reset Button until the Status (Red) LED blinks TWICE.
- Release the Reset Button.
The factory default configuration has now been restored, and the FBR-1700TX is ready for use.

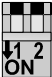
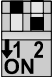


DIP switches

Refer to the following table.

Printer Port

Standard parallel printer port. If you wish to share a printer, connect it here.

DIP Switches

DIP Switch Setting	Description
 1=off 2=off	Normal Operation
 1=off 2=on	DHCP Server function disabled.
 1=on 2=off	Used to restore Default IP Address and clear Password (See below)
 1=on 2=on	Normal Operation.

Restore Default IP Address and Clear Password

If the FBR-1700TX's IP Address or password is lost, the following procedure can be used to recover from this situation.

1. Turn the power to the FBR-1700TX OFF.
2. Set DIP switch 1 ON.
3. Turn the power to the FBR-1700TX ON.
4. Operate DIP switch 1 in the following sequence (you have 15 seconds to complete the sequence):
 - OFF
 - ON
 - OFF
5. The FBR-1700TX will now reset, and the Red Status LED flash. The following changes will have been made. (Other configuration data is unchanged.)
 - *IP Address* set to its default value of 192.168.0.1
 - *Network Mask* set to 255.255.255.0

- The password cleared (no password).
6. You can now connect to the FBR-1700TX and make any configuration changes required.

Chapter 2

Installation



This Chapter covers the physical installation of the FBR-1700TX.

Requirements

- Ethernet LAN (10/100BaseT) and the TCP/IP protocol.
- For Internet Access, a DSL or Cable modem, and an Internet Access account with an ISP.

Procedure

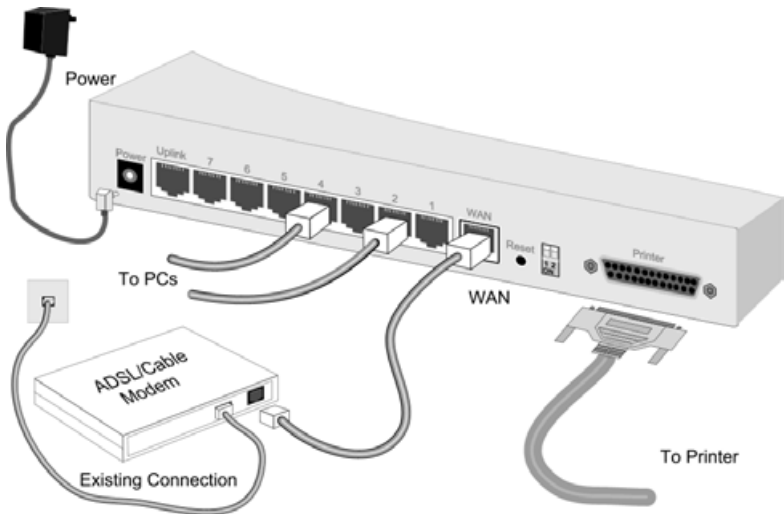


Figure 4 Installation Diagram

1. Choose an Installation Site

Select a suitable place on the network to install the FBR-1700TX. Ensure the FBR-1700TX and the Cable/DSL modem are powered OFF.

2. Connect LAN Cables

Use standard LAN cables to connect PCs to the Hub ports on the LevelOne FBR-1700TX 7 Port Broadband Router For ADSL/Cable Modem. Both 10BaseT and 100BaseT connections can be used simultaneously.

3. Connect WAN Cable

Connect the ADSL or Cable modem to the WAN port on the FBR-1700TX. Use the cable supplied with your modem. If no cable was supplied, use a standard LAN cable.

4. Connect Printer Cable

Use a standard parallel printer cable to connect your printer to the Printer port on the FBR-1700TX.

5. Power Up

Connect the supplied power adapter and power up.

Use only the power adapter provided. Using a different one may cause hardware damage

6. Check the LEDs

When the FBR-1700TX is powered On, The *Status* LED should flash, then turn off. If it stays on, there is a hardware error.

For more information, refer to LEDs in Chapter 1.

Chapter 3

Configuration



This Chapter provides details of the configuration process.

Overview

This chapter describes the procedure for:

- LAN setup
- WAN port configuration for Internet Access

PCs on your local LAN may also require configuration. For details, see *Chapter 4 - PC Configuration*.

Other configuration may also be required, depending on which features and functions of the FBR-1700TX you wish to use. Use the table below to locate detailed instructions for the required functions.

To Do this:	Refer to:
Configure PCs on your LAN.	Chapter 4: PC Configuration
Learn more about using DHCP on the internal LAN	Chapter 5: DHCP
Configure the FBR-1700TX and routers for a LAN which has 1 or more routers.	Chapter 6: Routing
Set a password for the FBR-1700TX, disable NAT (Network Address Translation), or enable upgrades via TFTP.	Chapter 7: Device Options

Use any of the following features: <ul style="list-style-type: none">• Special Internet Applications• Virtual Servers• Exposed Computer	Chapter 8: Advanced Internet Features
Limit Internet Access by individual workstations	Chapter 9: Access Control



Where use of a certain feature requires that PCs or other LAN devices be configured, this is also explained in the relevant chapter.

Configuration Program

The FBR-1700TX contains a HTTP server. This enables you to connect to it, and configure it, using your Web Browser.

Most Browsers should work, provided they support HTML tables and forms.

Preparation

Before attempting to configure the FBR-1700TX, please ensure that:

- Your PC can establish a physical connection to the FBR-1700TX. The PC and the FBR-1700TX must be directly connected (using one of the Hub ports on the FBR-1700TX) or on the same LAN segment.
- The FBR-1700TX must be installed and powered ON.
- If the FBR-1700TX's default IP Address (192.168.0.1) is already used by another device, the other device must be turned OFF until the FBR-1700TX is allocated a new IP Address during configuration.

Connecting to the FBR-1700TX

To establish a connection from your PC to the device:

1. After installing the FBR-1700TX in your LAN, start your PC. If your PC is already running, restart it.
2. Start your WEB browser.
3. In the *Address* box, enter "HTTP://" and the IP Address of the FBR-1700TX, as in the following example, which uses the FBR-1700TX's default IP Address:

```
HTTP://192.168.0.1
```

4. If you have assigned a password to the FBR-1700TX you will be prompted for the password, as shown below. (If no password has been set, this dialog will not appear.)

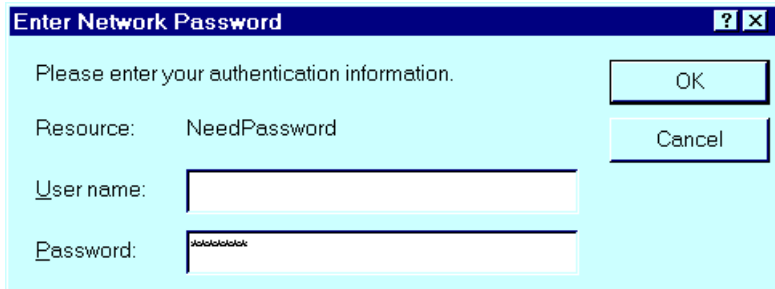


Figure 5: Password Dialog

- Leave the "User Name" blank.
 - Enter the password for this device, if one has been set.
5. You should then see the *Home* screen.
See the following section for the available options and configuration screens.

If you can't connect

If the FBR-1700TX does not respond, check the following:

- The FBR-1700TX is properly installed, LAN connection is OK, and it is powered ON.
- Ensure that your PC and the FBR-1700TX are on the same network segment. (If you don't have a router, this must be the case.)
- If your PC is using a fixed IP Address, its IP Address must be within the range 192.168.0.2 to 192.168.0.254 to be compatible with the FBR-1700TX's default IP Address of 192.168.0.1. Also, the *Network Mask* must be set to 255.255.255.0. See *Chapter 4 - PC Configuration* for details on checking your PC's TCP/IP settings.

Navigation & Data Input

- Use the menu bar on the left of the screen, and the "Back" button on your Browser, for navigation.
- Changing to another screen without clicking "Save" does NOT save any changes you may have made. You must "Save" before changing screens or your data will be ignored.

Home Screen

The *Home* screen is shown below. No data can be input from this screen.



Figure 6: Home Screen

Note that the navigation bar contains a *Help* button. Context-sensitive help is available from each screen. From this screen, the *Help* file provides links to all help files.

LAN Port Screen

The LAN Port screen, select *Device-LAN Port*. You will see the example below

level
one

[Device](#)
[Routing](#)
[Status](#)

[Advanced Internet](#)
[Access Control](#)
[Back](#)
[help](#)

LAN Port

Internal LAN

Device IP Address 192 168 0 1
Network Mask 255 255 255 0

Operation Enable Disable

Start IP Address 192 168 0 2
Finish IP Address 192 168 0 51

DHCP Server

DNS (Domain Name Server) IP Address

DNS (1) (Required) 0 0 0 0
DNS (2) (Optional) 0 0 0 0
DNS (3) (Optional) 0 0 0 0

(The first available DNS will be used.)

Save Cancel

Figure 7: LAN Port Screen

LAN Port Configuration.

For most users, the default values for these fields should be satisfactory, and no changes will be required.

If your LAN contains an existing Router or Routers, refer to *Chapter 6 - Routing*.

Data - LAN Port Screen

Internal LAN	
Device IP Address	IP address for the FBR-1700TX. Use the default value of 192.168.0.1 unless the address is already in use or your LAN is using a different IP address range. In the latter case, enter an unused IP Address from within the range used by your LAN.
Network Mask	The default value 255.255.255.0 is standard for small (class "C") networks. For other networks, use the Network Mask for the LAN segment to which the FBR-1700TX is attached. i.e. the same value as the PCs on that LAN segment.
DHCP Server	
Operation	<p>If Enabled, the FBR-1700TX will allocate IP Addresses to PCs on your LAN. The default and recommended value is Enabled.</p> <p>If you are already using a DHCP Server, this setting must be DISABLED, and the existing DHCP server must be re-configured. See Chapter 5 for further details.</p>
Start IP Address Finish IP Address	<p>The <i>Start IP Address</i> and <i>Finish IP Address</i> fields set the values used by the DHCP server.</p> <p>This range also determines the number of DHCP clients supported. (Maximum 253.)</p>

**DNS (Domain
Name Server)
IP Addresses**

You do NOT need to enter DNS addresses UNLESS you are using a *Fixed IP Address* on the WAN port. (Your ISP has allocated you a fixed IP Address.) In this case, your ISP should recommend a DNS. You need to enter that address or addresses here.

If using a *Dynamic IP Address (DHCP Client)*, on the WAN port, the DNS entries are optional.

Multiple DNS entries should be entered in the order you want them accessed. (The first available DNS will be used.)

WAN Configuration

To configure the WAN port:

- Select **Device** from the menu.
- Select the appropriate connection type (*Direct Connection* or *PPPoE*) on the screen below, then click the **Configure** button.



Figure 8: Device Screen

Tip:

If your connection documentation does not refer to *PPPoE*, select **Direct Connection**.

WAN - Direct Connection

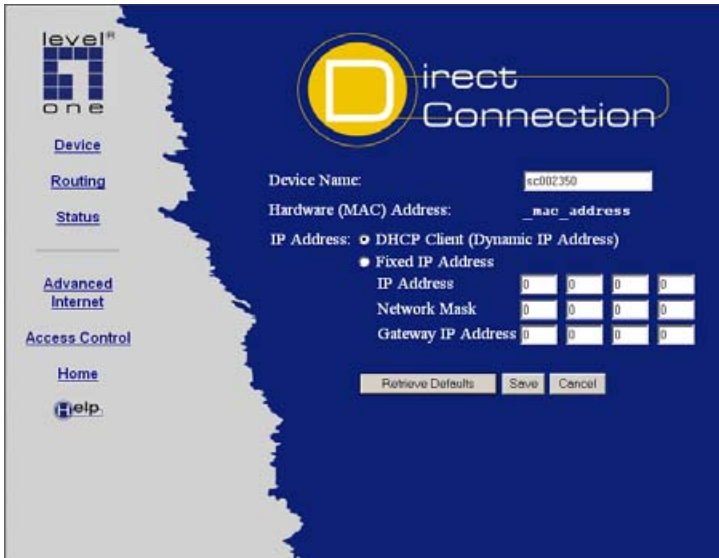


Figure 9: WAN - Direct Connection

If you selected *Direct Connection*, a screen like the example above will be shown.

WAN Port Screen (Direct Connection)

Data	
Device Name	This is also called the "Host Name". Normally, there is no need to change the default name, but if your ISP requests that you use a particular "Host name", enter it here. This name will be provided to, and recorded by, the remote DHCP Server.

Hardware (MAC) Address	If your ISP asks for the <i>Network Adapter Address</i> , <i>Physical Address</i> , <i>Hardware Address</i> , or <i>MAC Address</i> for the PC the DSL/Cable modem is connected to, provide this value.
DHCP Client (Dynamic IP Address)	Leave this enabled if you want your ISP to allocate an IP Address to the FBR-1700TX upon connection.
Fixed IP Address	Select this if using a fixed IP Address. If this option is selected, the following data must be entered. <ul style="list-style-type: none"> • IP Address. If connecting to an ISP, this is the address allocated by the ISP. If connecting to another LAN, this must be a valid address on the external LAN. • Network Mask This must be compatible with the IP Address above • Gateway IP Address The address of the router or gateway, either on the external LAN, or supplied by your ISP.
Buttons	
Retrieve Defaults	Get the default <i>Device Name</i> and clear the other items. No changes are made to the configuration until you click the <i>Save</i> button.
Save	Save any data you have entered on this screen. Remember to save before changing to another screen.
Cancel	Cancel any data you have entered since the last "Save" operation.

Note:

If using *DHCP Client (Dynamic IP Address)*, the IP Address, Network Mask, and Gateway fields may display the values obtained dynamically.

WAN - PPPoE

If you selected *PPPoE*, a screen like the following example will be displayed.

Figure 10: WAN Port - PPPoE

WAN Port Screen (PPPoE)

Data	
Account/User Name	The name of the Internet account provided by your ISP.
Password & Verify	Enter the password for the above account. Re-enter the password in the <i>Verify</i> field, to ensure it is correct.
IP Address provided by ISP	Normally, this is <i>Dynamic</i> ; use this setting if your ISP did not provide an IP Address. If your ISP did provide an IP Address, select <i>Fixed</i> and enter the value they provided.

Idle Time-out	If an connection is inactive for longer than this time period, it will be terminated. If zero (0), then the connection will never be terminated.
Connect on Demand	Normally, this should be Enabled. If disabled, you must use the <i>Connect</i> button on the <i>Status</i> screen to establish a connection.
Buttons	
Save	Save any data you have entered on this screen. Remember to save before changing to another screen.
Cancel	Cancel any data you have entered since the last "Save" operation.

WAN Status

Clicking **Status** on the menu bar will take you to the **WAN Status** screen. The screen shown will depend on whether you are using a **Direct Connection** or **PPPoE**.

WAN Status - Direct Connection

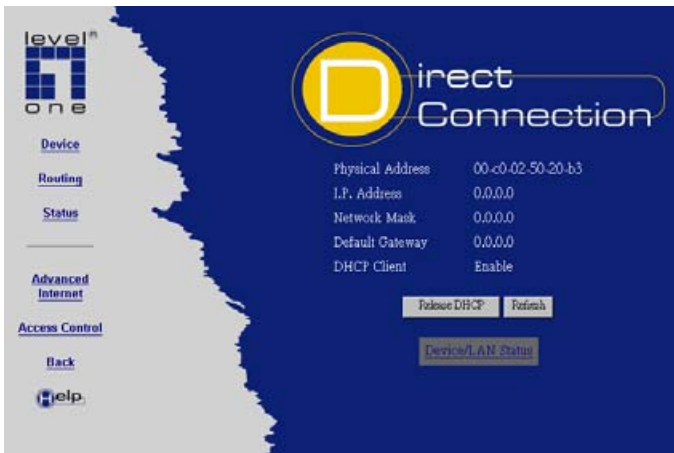


Figure 11: WAN Status - Direct Connection

Data

WAN Status	
Physical Address	"Hardware" address of this device, as seen by devices on the WAN.
IP Address	The IP Address of this device, as seen by devices on the WAN. (This device has 2 IP Addresses; one for the local LAN, and another for the WAN port.)
Network Mask	The Network Mask for the above IP Address.

Default Gateway	IP address of the Router/Gateway on the WAN port.
DHCP Client	Displays "Enabled" or "Disabled", indicating whether this device is acting as a DHCP client on the external LAN or WAN.
Buttons	
Release DHCP	Use this button if the connection seems to have been lost, and no data is being transferred. (This button has no effect unless acting as a DHCP Client.)
Refresh	Update the data on screen.

WAN Status - PPPoE

level one

[Device](#)
[Routing](#)
[Status](#)

[Advanced Internet](#)

[Access Control](#)

[Back](#)
[Help](#)

Status

Physical Address 00:c0:02:50:20:b1
IP Address 61.217.58.216
Network Mask 255.0.0.0
PPPoE Link Status ON

Log

```
010:Unknown Code.
017:Receive 0:10:67:0:5E:71 0:c0:2:50:20:B1
PPPoE_DISC: 1.1 UNKNOWN ID=0xB4 len 24
016:ppp up successfully
015:IPCP up, set MTU:1492
014:start PPP
```

Connect Disconnect Clear Log Refresh

Device/LAN Status

Figure 12: WAN Status - PPPoE

Data

Status	
Physical Address	The "Hardware" address of this device, as seen by other devices on the WAN.
IP Address	The IP Address of this device, as seen by devices on the WAN. (This device has 2 IP Addresses; one for the local LAN, and another for the WAN port.)
Network Mask	The Network Mask (Subnet Mask) for the IP Address above.
PPPoE Link Status	This indicates whether or not the connection is currently established. If the connection does not exist, the Connect button can be used to establish a connection. If the connection currently exists, the Disconnect button can be used to break the connection.

Log	
Log Data	The Connection Log shows status messages relating to the existing connection. The most common messages are listed in the following table.

Buttons	
Connect	If not connected, establish a connection to your ISP
Disconnect	If connected to your ISP, hang up the connection.
Clear Log	Delete all data currently in the Log. This will make it easier to read new messages.
Refresh	Contact this device and update the Log data.

Connection Log Messages

Message	Description
Connect on Demand	Connection attempt has been triggered by the "Connect on Demand" setting.
Manual connection	Connection attempt started by the "Connect" button.
Reset physical connection	Preparing line for connection attempt.
Connecting to remote server	Attempting to connect to the ISP's server.
Remote Server located	ISP's Server has responded to connection attempt.
Start PPP	Attempting to login to ISP's Server and establish a PPP connection.
PPP up successfully	Able to login to ISP's Server and establish a PPP connection.
Idle time-out reached	The connection has been idle for the time period specified in the "Idle Time-out" field. The connection will now be terminated.
Disconnecting	The current connection is being terminated, due to either the "Idle Time-out" above, or "Disconnect" button being clicked.
Error: Remote Server not found	ISP's Server did not respond. This could be a Server problem, or a problem with the link to the Server.
Error: PPP Connection failed	Unable to establish a PPP connection with the ISP's Server. This could be a login problem (name or password) or a Server problem.

Error: Connection to Server lost	The existing connection has been lost. This could be caused by a power failure, a link failure, or Server failure.
Error: Invalid or unknown packet type	The data received from the ISP's Server could not be processed. This could be caused by data corruption (from a bad link), or the Server using a protocol which is not supported by this device.

Device/LAN Status

On the *WAN Status* screen, there is a link to the *Device/LAN Status* screen. Clicking this link will result in a screen like the example below.

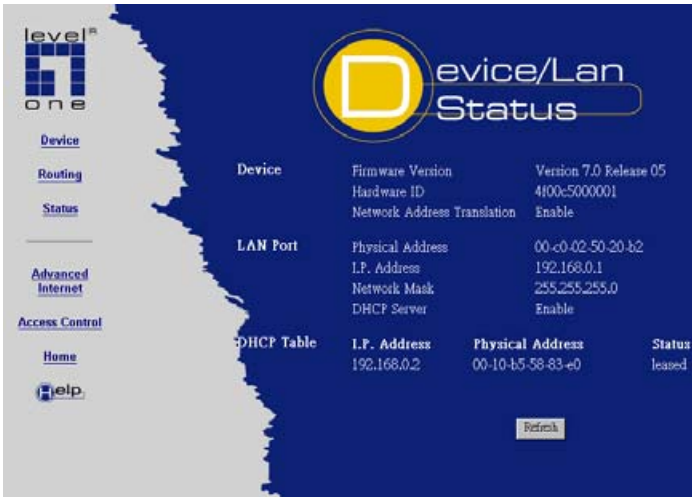


Figure 13: Status Screen

Data - LAN/Device Status

Device	
Firmware Version	Version of the firmware (embedded software, including this program) which is currently installed.
Hardware ID	The hardware ID of this device, used by the manufacturer.
Network Address Translation	This will display "Enabled" (NAT is On) or "Disabled" (NAT is Off)

LAN Port	
Physical Address	The "Hardware" address of this device, as seen by other devices on the Internal LAN.
IP Address	The IP Address of this device, as seen by other devices on the Internal LAN.
Network Mask	The Network Mask (Subnet Mask) for the IP Address above.
DHCP Server	This shows the status of the DHCP Server function. The value will be "Enabled" or "Disabled".
DHCP Table	
IP Address	The IP Address which has been allocated by the DHCP server to the other device.
Physical Address	The Physical Address (Hardware Address) of the device which has been allocated a IP Address.
Status	Possible Status values are "Leased" (the IP Address is allocated to the device shown) or "Reserved" (the IP Address is not available).

Note:

The DHCP table will be empty unless the DHCP Server function is being used. If not empty, this table lists the devices on the LAN which have been allocated IP Addresses by the DHCP server function.

Chapter 4

PC Configuration



This Chapter details the PC Configuration required on the local ("Internal") LAN.

Overview

For each PC, the following may to be configured:

- TCP/IP network settings
- Internet Access configuration
- Network printer

TCP/IP Settings

If using the default FBR-1700TX settings, and the default Windows 95/98 TCP/IP settings, no changes need to be made.

- By default, the FBR-1700TX will act as a DHCP Server, automatically providing a suitable IP Address to each PC when the PC boots.
- The default Windows 95/98 TCP/IP setting is to act as a DHCP client.

To check your PC's TCP/IP Settings:

1. Select *Control Panel - Network*. You should see a screen like the following:

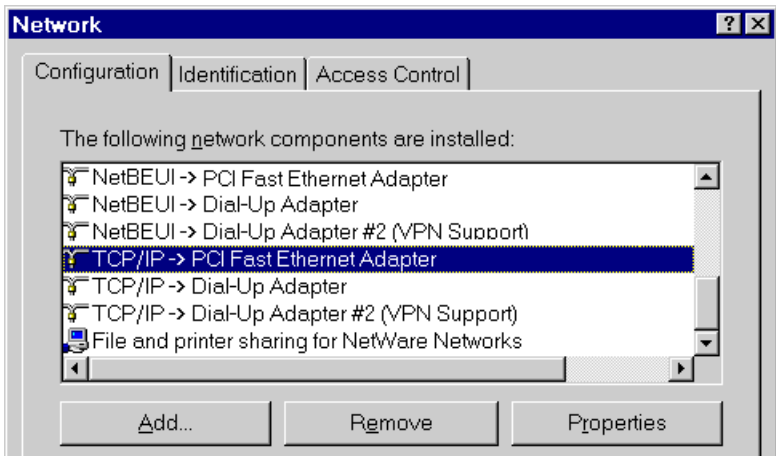


Figure 14: Network Configuration

2. Select the *TCP/IP* protocol for your network card.
3. Click on the *Properties* button. You should then see a screen like the following.

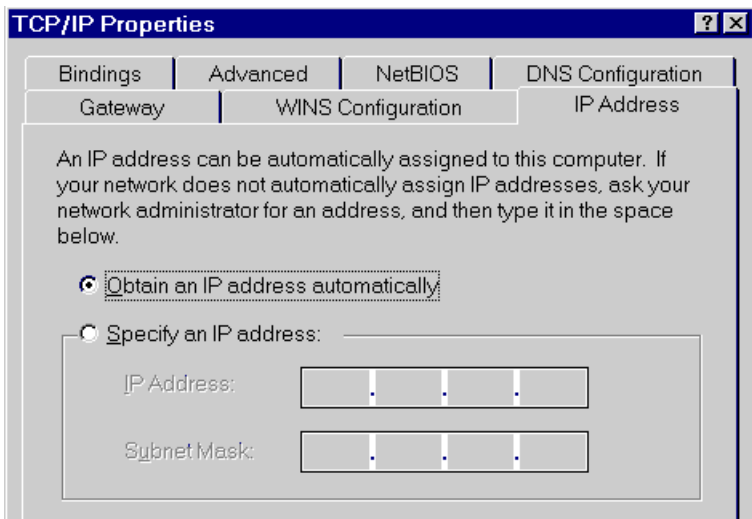


Figure 15: IP Address (Win 95)

Ensure your TCP/IP settings are correct, as follows:

Using DHCP

To use DHCP, select the radio button *Obtain an IP Address automatically*. This is the default Windows settings.

Restart your PC to ensure it obtains an IP Address from the FBR-1700TX.

Using "Specify an IP Address"

- If your PC is already configured, do NOT change the settings on the IP Address tab shown in Figure 15 above.
- On the *Gateway* tab, enter the FBR-1700TX's IP address in the *New Gateway* field and click *Add*. Your LAN administrator can advise you of the IP Address they assigned to the FBR-1700TX.

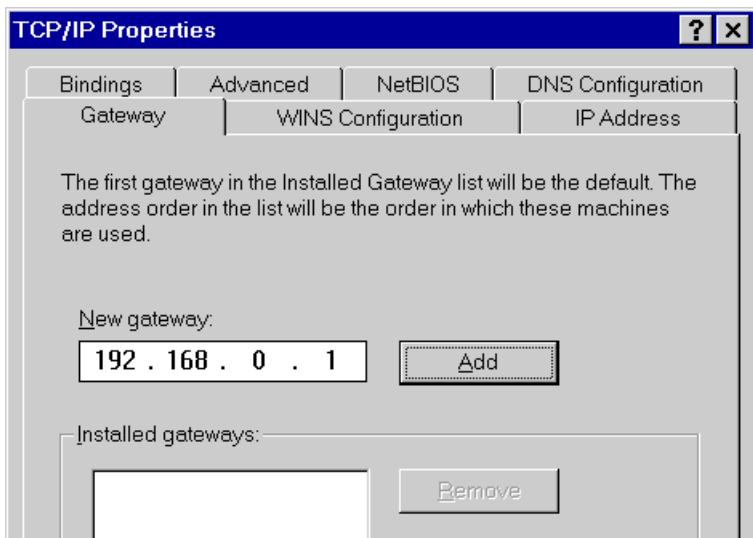


Figure 16: Gateway Tab (Win 95/98)

- On the *DNS Configuration* tab, ensure *Enable DNS* is selected. If the *DNS Server Search Order* list is empty, enter the DNS address provided by your ISP in the fields beside the *Add* button, then click *Add*.

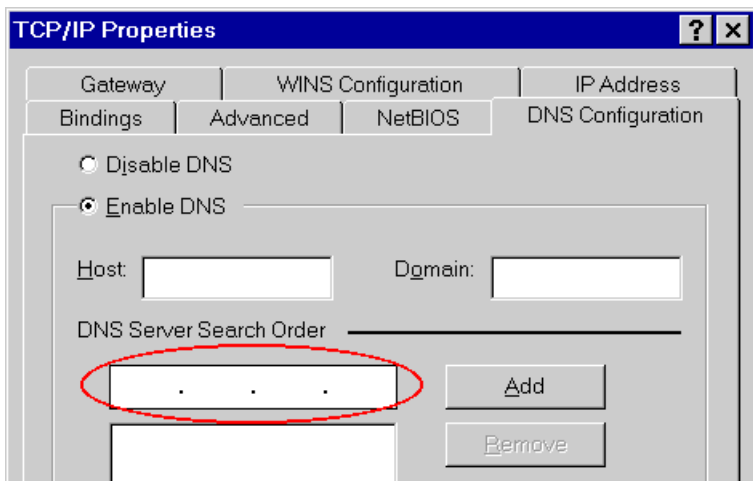


Figure 17: DNS Tab (Win 95/98)



Note!

If your LAN has a Router, the LAN Administrator must re-configure the Router itself. Refer to *Chapter 6 - Routing* for details.

Internet Access Configuration

If you are using the FBR-1700TX for Internet access:

- Ensure that the DSL modem, Cable modem, or other permanent connection is functional.
 - Use the following procedure to configure your Browser to access the Internet via the LAN, rather than by a Dial-up connection.
1. Select *Start Menu - Settings - Control Panel - Internet Options*.
 2. Select the *Connection* tab, and click the *Setup* button.
 3. Select "I want to set up my Internet connection manually, or I want to connect through a local area network (LAN)" and click "Next".
 4. Select "I connect through a local area network (LAN)" and click "Next".
 5. Ensure all of the boxes on the following *Local area network Internet Configuration* screen are **unchecked**.
 6. Check the "No" option when prompted "Do you want to set up an Internet mail account now?".
 7. Click "Finish" to close the Internet Connection Wizard.
 8. Then simply use your Browser, FTP client, or other Internet client to connect to the desired Internet site.

Accessing AOL

To access AOL (America On Line) through the FBR-1700TX, the *AOL for Windows* software must be configured to use TCP/IP network access, rather than a dial-up connection. The configuration process is as follows:

- Start the *AOL for Windows* communication software. Ensure that it is Version 2.5, 3.0 or later. This procedure will not work with earlier versions.
- Click the *Setup* button.
- Select *Create Location*, and change the location name from "New Locality" to " FBR-1700TX ".

- Click *Edit Location*. Select *TCP/IP* for the *Network* field. (Leave the *Phone Number* blank.)
- Click *Save*, then *OK*.
Configuration is now complete.
- Before clicking "Sign On", always ensure that you are using the " FBR-1700TX " location.

Printing Setup

The FBR-1700TX provides printing support for 2 methods of printing from Windows:

- **Print Port Driver.** After installing the Print Port Driver, Windows users can print directly to the FBR-1700TX. Print jobs are spooled (queued) on each PC.
The supplied Print Port Driver supports Windows 95/98, Windows ME, Windows NT4.0, and Windows 2000.
- **LPD/LPR Printing.** If using Windows NT 4.0 Server or Windows 2000 Server, LPD/LPR printing can be used. No software needs to be installed on either the Windows Server or each client PC. Print jobs will be spooled (queued) on the Windows Server, and can be managed using the standard Windows Server tools.

Print Port Driver Setup

The following procedure is for Windows 95/98, Windows ME, Windows NT4.0, and Windows 2000.

1. Insert the supplied CD-ROM into your drive. If the setup program does not start automatically, run SETUP.EXE in the root folder.
2. At the *Setup Type* screen, select the correct model.
3. At the *Select Components* screen, select the **Print Port Driver** option.
4. Follow the prompts to complete the installation.
5. The *Print Port Setup* will then run, and the following screen will be displayed.

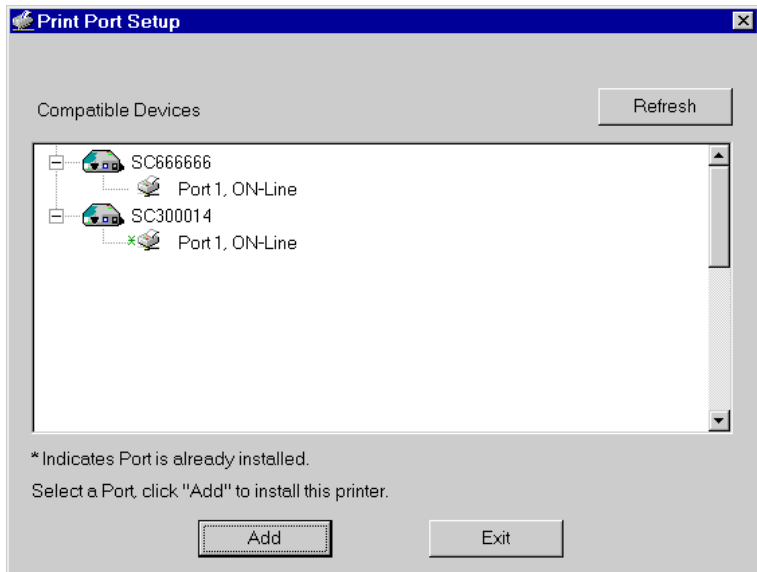


Figure 18: Print Port Setup

6. Select the desired device and port, and then click the "Add" button.
7. A pop-up message will inform you if the port has been created successfully, and then the Windows *Add Printer* wizard will start.
 - Select the correct Printer Manufacturer and Model, or use the "Have Disk" option if appropriate.
 - If desired, change the Printer name so it indicates the device used (e.g. HP2100 on SCA43600)
 - If prompted about Sharing, do NOT enable Sharing.
8. Installation is now complete. You can now print using this printer.
 - To install additional Printers, repeat steps 6 and 7.
 - Use the **Start** menu to run this program in future. The default installation is *Start - Programs - Broadband Internet Router - Add Port*.

Management

- Print jobs can be managed like any Windows printer. Open the *Printers* folder (*Start - Settings - Printers*) and double-click any printer to see the current print jobs.
- If the printer attached to the FBR-1700TX is changed, just run this program again, and select the correct printer.
- To delete a port created by this setup program, use the Windows *Delete Port* facility:
 - Right-click any printer in the *Printers* folder, and select *Properties*.
 - Locate the *Delete Port* button. This button is on the *Details* or *Ports* tab, depending on your version of Windows.
- If the FBR-1700TX's IP Address is changed, and you can no longer print, delete the port (see procedure above) and re-install it.

Port Options

The options for the *Print Port Driver* are accessed via the Windows *Port Settings* button.

Use *Start - Settings - Printers* to open the Printers folder, then right-click the Printer, and select *Properties*. The *Port Settings* button is on the *Details* or *Port* tab, depending on your version of Windows.

An example screen is shown below:

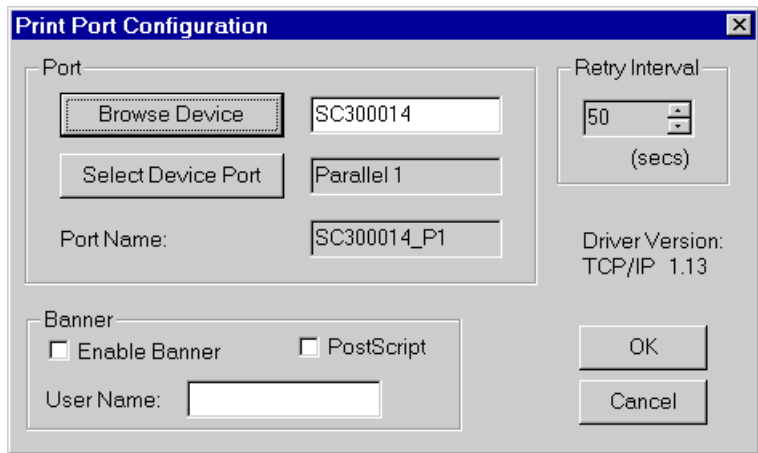


Figure 19: Print Port Configuration

Items shown on this screen are as follows:

Port	<p>If desired, click <i>Browse</i> to select a different device. (The <i>Select Device Port</i> button is provided to allow this software to work with multi-port models.)</p> <p>The <i>Port Name</i> is shown in the Printer's <i>Properties</i>.</p>
Banner	<p>Check this option to print a banner page before each print job.</p> <ul style="list-style-type: none"> • If using a PostScript Printer, check the <i>PostScript</i> box. • The <i>User Name</i> will be printed on the banner page.
Retry Interval	<p>Sets how often Windows will poll the FBR-1700TX to establish a connection when the printer is busy. Increase this value if you get too many warning messages.</p>

LPD/LPR Printing

LPD/LPR printing can be used with Windows NT 4.0 Server or Windows 2000. No software needs to be installed.

Windows NT 4.0 Server Configuration

To use LPD printing, **Microsoft TCP/IP Printing** must be installed and enabled. This can be checked using *Start-Settings-Control Panel-Network - Services*.

To install LPD printing using the FBR-1700TX, follow this procedure:

1. Go to *Start-Settings-Printer* and invoke the **Add Printer** wizard.
2. When prompted with "This printer will be managed by..", select **My Computer** and click Next.
3. Select **Add Port...**, then select **LPR Port** and click **New Port**.
4. In the Dialog requesting *Name of Address of server providing lpd*, enter the IP address of the FBR-1700TX.
5. For *Name of printer or print queue on that server*, enter L1
6. Click OK. When returned to the Printer Ports window, simply select *Close* and then install your printer driver as usual.
7. When prompted whether or not the printer will be shared, select the **Sharing** radio button.
8. In the *Shared* dialog box, enter the shared printer name. The shared name is how other users will see this printer. You should advise client PCs of the Server name and this printer name.
9. Click OK to save and exit.

Windows 2000 Server Configuration

The *LPD/LPR Port* is not enabled by default. To enable it, use this procedure:

1. In Control Panel, select *Add/Remove Programs*, then *Windows Components*.
2. Select *Other Network File and Print Services*, then click the *Details* button.

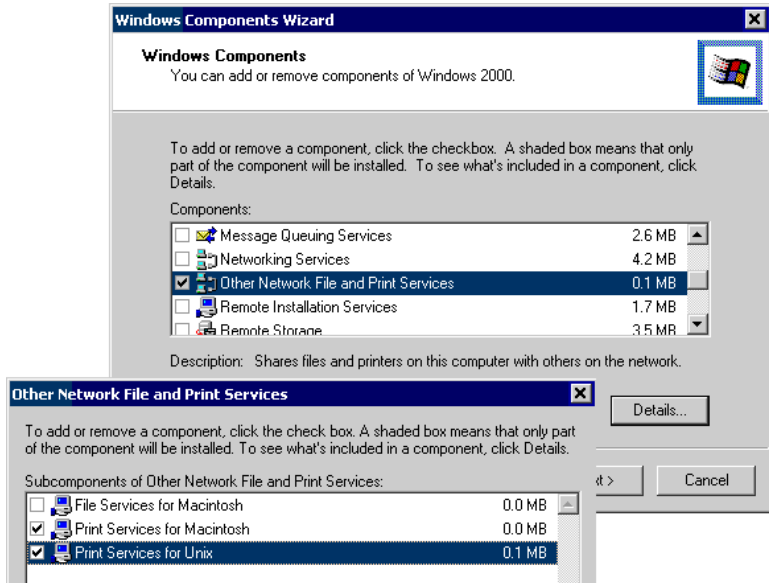


Figure 20: Adding LPD/LPR Port (Win 2000)

3. Enable *Print Services for Unix*, and click OK.
4. Click *Next* and complete the Wizard.

Adding the Printer

1. Open your *Printers* folder, and start the *Add Printer* Wizard.
2. When prompted, select *Local Printer*.
3. On the *Select the Printer Port* screen, select *LPR Port*, as shown below. Click *Next* to continue.

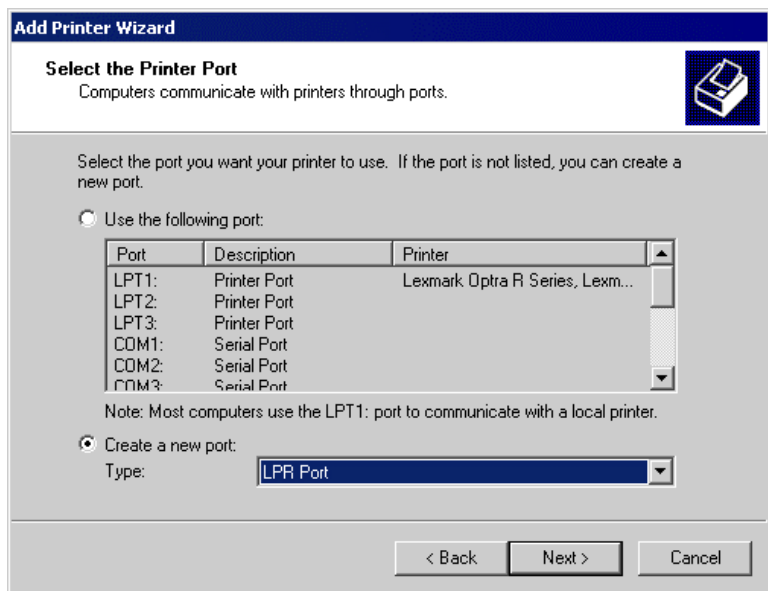


Figure 21: Windows 2000: Select Port

- In the Dialog requesting *Name or Address of server providing lpd*, enter the IP address of the FBR-1700TX.
- For *Name of printer or print queue on that server*, enter L1.
- Click OK, and then *Next*, and continue the Wizard.
- At the *Select Sharing* screen, select the Radio Button for *Share As*, and enter the shared printer name. The shared name is how other users will see this printer. You should advise client PCs of the Server name and this printer name.
- Complete the *Add Printer* wizard.

Client PC Setup for LPD/LPR Printing

After configuring the Windows Server, client PCs on the LAN can install the new printer.

The following procedure is for Windows 95/98/ME, Windows NT4.0, and Windows 2000 workstation.

1. Open your *Printers* folder, and start the *Add Printer* Wizard.
2. When prompted, select *Network Printer*.
3. When prompted for *Network Path or Queue Name*, click the *Browse* button, and locate the Server and Printer which your Network Administrator advised you to use.
4. Click OK, then *Next*.
5. Select the correct printer Manufacturer and Model, as advised by your Network Administrator, and click *Next*.
6. Follow the prompts to complete the Wizard.
7. The new printer will be listed with any other installed printers, and may be selected when printing from any Windows application.

Macintosh Configuration

The FBR-1700TX currently does not support printing from the Macintosh, but you can access the Internet via the FBR-1700TX. The procedure is as follows.

1. Open the TCP/IP Control Panel.
2. Select *Ethernet* from the *Connect via* pop-up menu.
3. Select *Using DHCP Server* from the *Configure* pop-up menu. The DHCP Client ID field can be left blank.
4. Close the TCP/IP panel, saving your settings.

Note:

If using manually assigned IP addresses instead of DHCP, the only change required is to set the *Router Address* field to the FBR-1700TX's IP Address.

Chapter 5

DHCP



This Chapter covers the use of DHCP, using either an existing DHCP Server or the FBR-1700TX's DHCP Server function.

Overview

If your LAN does not use DHCP, and you do not wish to use DHCP, you can ignore this chapter.

What DHCP Does

A DHCP (Dynamic Host Configuration Protocol) **server** allocates a valid IP address to a DHCP **client** (PC or device) upon request.

- The client request is made when the client device boots.
- The DHCP Server provides the *Gateway* and *DNS* addresses to the client, as well as allocating an IP Address.
- Windows 95/98/ME include all the software required to act as a DHCP **client**. This is the default Windows setting for TCP/IP.
- The FBR-1700TX can act as a **DHCP server**.

Using the FBR-1700TX's DHCP Server

This is the default setting. The DHCP Server settings are on the *LAN* screen. On this screen, you can:

- Enable or Disable the FBR-1700TX's *DHCP Server* function.
- Set the range of IP Addresses allocated to PCs by the DHCP Server function.



Note!

You can assign Fixed IP Addresses to some devices while using DHCP, provided that the Fixed IP Addresses are NOT within the range used by the DHCP Server.

Using another DHCP Server

You can only use one (1) DHCP Server. If you wish to use another DHCP Server, rather than the FBR-1700TX's, the following procedure is required.

1. Disable the DHCP Server feature in the FBR-1700TX. This setting is on the LAN screen.
2. Configure the DHCP Server to provide the FBR-1700TX's IP Address as the *Default Gateway*.

To Configure your PCs to use DHCP

This is the default setting for TCP/IP under Windows 95/98/ME. See *Chapter 4 - PC Configuration* for the procedure to check these settings.

Chapter 6

Routing

6

This Chapter explains the Routing features of the FBR-1700TX.

Overview

While the FBR-1700TX includes a standard (static) routing table, this feature can be completely ignored if you do not have a router in your LAN.

If you DO have a router, it is necessary to configure BOTH the Router and the Routing table in the FBR-1700TX correctly, as described in the following sections.



See *Routing Example* later in this Chapter for an example of configuring both the FBR-1700TX and the Router.

FBR-1700TX Configuration

The routing table is accessed by the *Routing* link on the Home screen. An example screen is shown below.



Figure 22: Routing Screen

Using this Screen

Any existing entries are listed. To view and edit the details of an existing entry, select it, and click "Get Data". After making any changes, click the "Update" button to save your changes.

To add a new entry, click "Clear Form", enter your data, then click the "Add" button.

Routing Table Data

An entry in the routing table is required for each LAN segment on your Network, other than the segment to which this device is attached. The data in the Routing Table is as follows.

Destination IP Address	The network address of the remote LAN segment. For standard class "C" LANs, the network address is the first 3 fields of this <i>Destination IP Address</i> . The 4 th (last) field can be left at 0.
Network Mask	The Network Mask used on the remote LAN segment. For class "C" networks, the standard Network Mask is 255.255.255.0
Gateway IP Address	The IP Address of the Router on the LAN segment to which this device is attached. (NOT the router on the remote LAN segment.)
Interface	Select the appropriate interface - LAN (Internal LAN) or WAN (External LAN or WAN) from the drop-down list.
Metric	The number of routers which must be traversed to reach the remote LAN segment. The default value is 1.

Router Configuration

It is essential that all IP packets for devices not on the local LAN be passed to the FBR-1700TX, so that they can be forwarded to the external LAN, WAN, or Internet. To achieve this, the local LAN must be configured to use the FBR-1700TX as the *Default Route* or *Default Gateway*.

Local Router

The local router is the Router installed on the same LAN segment as the FBR-1700TX. This router requires that the *Default Route* is the FBR-1700TX itself. Typically, routers have a special entry for the *Default Route*. It should be configured as follows.

Destination IP Address	Normally 0.0.0.0, but check your router documentation.
Network Mask	Normally 0.0.0.0, but check your router documentation.
Gateway IP Address	The IP Address of the FBR-1700TX.
Metric	1

Other Routers on the Local LAN

Other routers on the local LAN must use the FBR-1700TX's *Local Router* as the *Default Route*. The entries will be the same as the FBR-1700TX's local router, with the exception of the *Gateway IP Address*.

- For a router with a direct connection to the FBR-1700TX's local Router, the *Gateway IP Address* is the address of the FBR-1700TX's local router.
- For routers which must forward packets to another router before reaching the IP FBR-1700TX's local router, the *Gateway IP Address* is the address of the intermediate router.

Routing Example

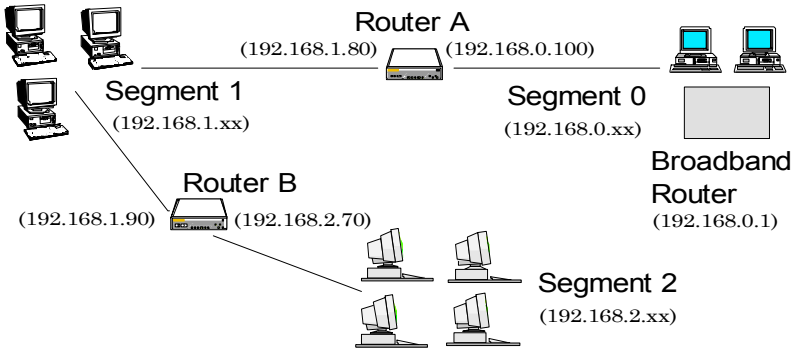


Figure 23: Routing Example

For the LAN shown above, with 2 routers and 3 LAN segments, the required entries would be as follows.

For the FBR-1700TX's Routing Table

The FBR-1700TX requires 2 entries as follows.

Entry 1 (Segment 1)	
Destination IP Address	192.168.1.0
Network Mask	255.255.255.0 (Standard Class C)
Gateway IP Address	192.168.0.100 (FBR-1700TX's local Router)
Entry 2 (Segment 2)	
Destination IP Address	192.168.2.0
Network Mask	255.255.255.0
Gateway IP Address	192.168.0.100

For Router A's Default Route

Destination IP Address	0.0.0.0
Network Mask	0.0.0.0
Gateway IP Address	192.168.0.1 (FBR-1700TX's IP Address)

For Router B's Default Route

Destination IP Address	0.0.0.0
Network Mask	0.0.0.0
Gateway IP Address	192.168.1.80 (FBR-1700TX's local router)

Chapter 7

Device Options



This Chapter details the options available on the FBR-1700TX's "Device Options" screen.

Overview

An example *Device Options* screen is shown below.

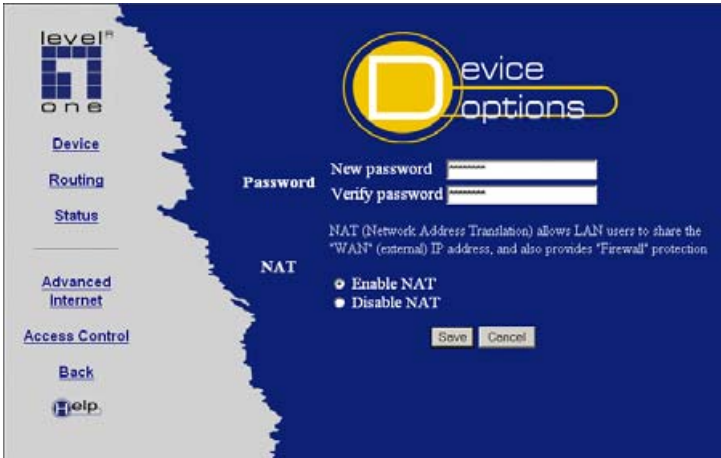


Figure 24: Options Screen

Password

Once a password is entered, it is required in order to change the device configuration. Passwords are case sensitive and can be up to 8 alphanumeric characters (no spaces or punctuation).

To create or change the password, enter the required password in both the *New Password* and *Verify Password* input fields.



When prompted for the password, leave the "User Name" blank.

NAT (Network Address Translation)T

NAT allows PCs on your LAN to share a single external (Internet) IP Address. This IP Address is supplied by your ISP. Use the following to determine whether or not you need NAT.

- For Internet access, NAT **must be left On** unless all PCs on your LAN have valid external IP Addresses.
- If this device is not being used to provide shared Internet access, NAT is not normally required. With NAT disabled, the FBR-1700TX will act as a static router.
- If NAT is disabled, the Firewall protection provided by the FBR-1700TX is lost, and the *Advanced Internet* features (Virtual Servers, Special Applications, and Exposed Computer) are no longer available.

Chapter 8

Advanced Internet



This Chapter explains how to use the FBR-1700TX's "Advanced Internet" features.

Overview

For situations where the FBR-1700TX is being used to provide shared Internet access, the following advanced features are provided.

- Special Internet Applications
- Virtual Servers
- Exposed Computer

This chapter contains details of the configuration and use of each of these features.

Advanced Internet Screen

This screen provides access to the advanced Internet features, and provides a convenient overview and control center. On this screen, you can enable any required feature. By default, all features are disabled.

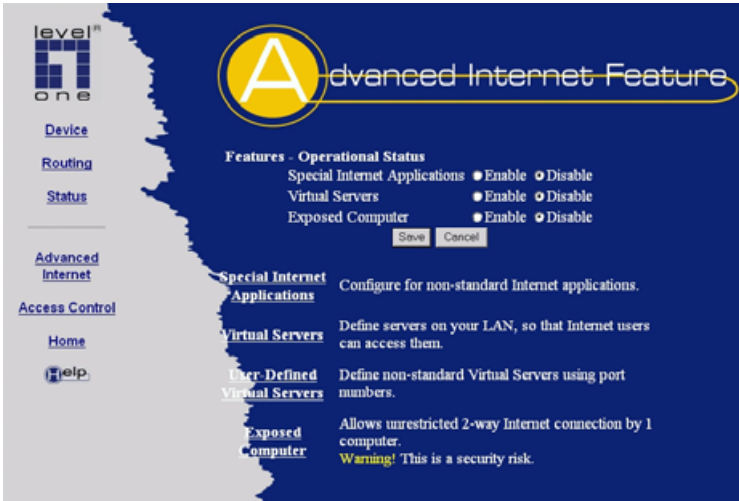


Figure 25: Advanced Internet Screen

Special Internet Applications

This feature is only required if you wish to use Internet applications which require 2-way communication, multiple connections, or combined TCP/UDP connections.

Examples of such applications are Internet Videoconferencing, Telephony, Games Servers, and other special-purpose Servers.

Generally, you will become aware of the need for this feature when an Internet application is unable to function correctly.



At any time, only one (1) PC can use each Special Application.

Special Applications Screen

This screen can be reached by selecting *Special Internet Applications*.

level^{one}

Device

Routing

Status

Advanced Internet

Access Control

Back

help

Special Applications

Existing Special Applications

Name:

Click "Get Data" to see correct data for selected application.

Data for this Application

Name:

Enable:

Outgoing Control

Protocol:

Port Range: Start Finish

Incoming Data

Protocol:

Port Range: Start Finish

Figure 26: Special Applications Screen

Using a Special Application

- Ensure that *Special Applications* has been enabled on the *Advanced Internet* screen.
- Configure the *Special Applications* screen as required.



Note!

Configuration data must be obtained from the Service/Application provider.
If an application still cannot function correctly, try using the "Exposed Computer" feature.

Some Special Applications have been defined not enabled.

- **To Enable a defined Application**
 - Select it from the drop-down list
 - Click "Get Data"
 - Check the *Enable* checkbox
 - Click "Update"
- **To Disable a defined Application**
 - As above, but uncheck the *Enable* checkbox.
- **To Delete a defined Application**
 - Select it from the drop-down list,
 - Click "Delete"
- **To Modify (Edit) a defined Application**
 - Select it from the drop-down list,
 - Click "Get Data"
 - Make any desired changes
 - Click "Update"
- **To Create a new Application**
 - Click "Clear Form"
 - Enter the required data, as described below
 - Click "Add"
- **To List all Applications**
 - Click "List All"

Configuration Data (from Service Provider)

This data must be obtained from the service provider.

Name	Enter a descriptive name to identify this application entry.
Enable	Use this to Enable or Disable support for this application, as required.
Outgoing	
Protocol	The protocol (TCP or UDP) used when you connect to the special application service.

Port Range: Start	The beginning of the range of port numbers used by the application server, for data you send to it. If the application uses a single port number, enter it in both the "Start" and "Finish" fields.
Port Range: Finish	The end of the range of port numbers used by the application server, for data you send.

Incoming

Protocol	The protocol (TCP or UDP) used when the application or service sends data to you.
Port Range: Start	The start of the range of port numbers used by the application server when data is sent to you. If using only one port number, enter it in both the "Start" and "Finish" fields.
Port Range: Finish	The end of the range of port numbers used by the application server, when data is sent to you.

Virtual Servers

This feature allows you to make Servers on your LAN accessible to Internet users. Normally, Internet users would not be able to access a server on your LAN because:

- Your Server does not have a valid external IP Address.
- Attempts to connect to devices on your LAN are blocked by the firewall in this device.

The "Virtual Server" feature solves these problems and allows Internet users to connect to your servers, as illustrated below.

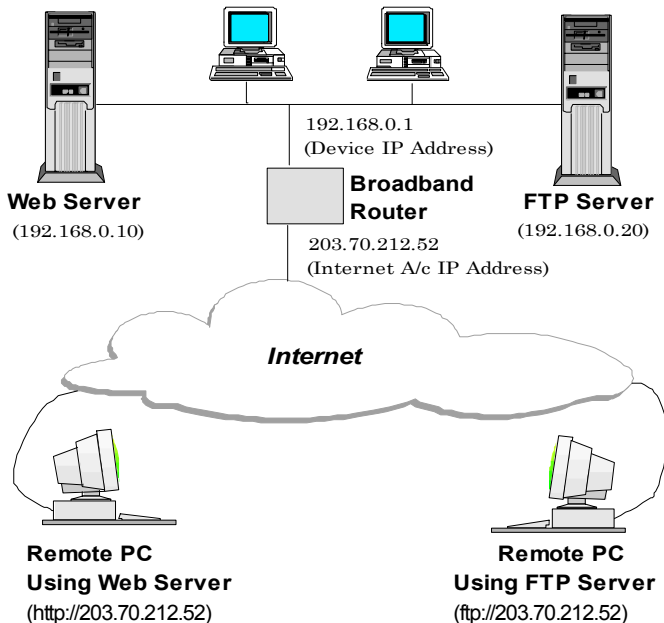


Figure 27: Virtual Servers

IP Address seen by Internet Users

Note that, in this illustration, both Internet users are connecting to the same IP Address, but using different protocols.

To Internet users, all virtual Servers on your LAN have the same IP Address.

This IP Address is allocated by your ISP, and can be checked on the "WAN Status" screen.

This address should be static, rather than dynamic, to make it easier for Internet users to connect to your Servers. If using a Static IP Address, it is entered on the "WAN" screen.

Virtual Server's LAN IP Address

The LAN IP Address of each Virtual Server (the PC on your LAN running the Server software) is required for configuration. But if using DHCP, the LAN IP Address of a PC may change. To solve this problem, you can use either of these methods:

- Assign a fixed IP Address to the Server PC, ensuring that its IP Address is NOT within the address range allocated by the DHCP Server.
- Reserve an IP Address for the Server PC in the DHCP Server, using the *Access Control - PC* screen.

Types of Virtual Servers

The FBR-1700TX supports two (2) types of Virtual Servers:

- **Pre-defined** - Standard server types. The only data required is the IP Address of the server on your LAN.
- **User-defined** - Non-standard servers. You must provide additional information about the server.

Note:

The TOTAL number of Virtual Servers which can be used at any time is 10.

Virtual Server Configuration

The *Virtual Servers* screen is reached by the *Advanced Internet - Virtual Servers* link. An example screen is shown below.

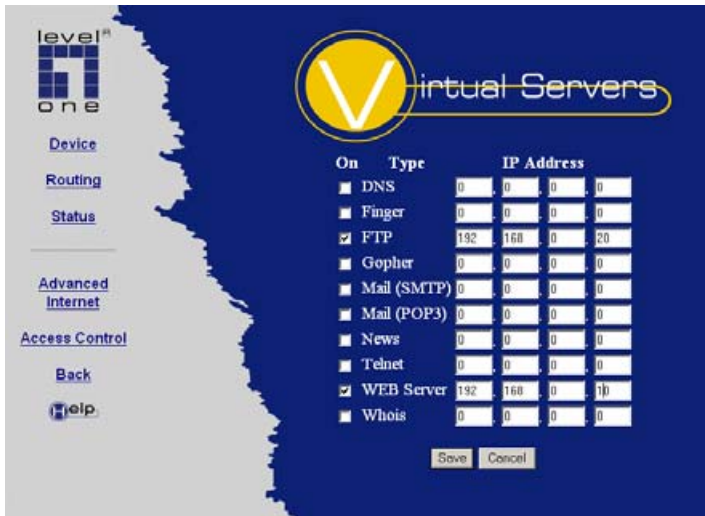


Figure 28: Virtual Server Screen.


Simply select the Server type or types you wish to use, enter the IP Address of the server on your LAN, and click "Save".



For each entry, the PC must be running the appropriate Server software.

User Defined Virtual Servers

If the type of Server you wish to use is not listed on the *Virtual Servers* screen, you can define it. Select *Advanced Internet - User Defined Virtual Servers* to see the following screen.



The screenshot shows the 'User Defined Virtual Servers' configuration page. On the left is a navigation menu with links for 'Device', 'Routing', 'Status', 'Advanced Internet', 'Access Control', 'Back', and 'help'. The main content area has a blue background with a yellow 'U' logo. It includes a section for 'Existing Servers' with a 'Name' dropdown set to 'None', 'Get Data', and 'Clear Form' buttons. Below this is a 'Data for this Server' section with fields for 'Name', 'Enable' (checked), 'IP Address' (0.0.0.0), 'Protocol' (UDP), 'Internal Port No.' (0), and 'External Port No.' (0). A note says '(Leave blank if the same as the Internal Port)'. At the bottom are 'Add', 'Delete', 'Update', 'List All', and 'Cancel' buttons.

Figure 29: User Defined Virtual Servers

This database operates in the same way as the other databases:

- **To Create a new Server**
 - Click "Clear Form"
 - Enter the required data (See next section)
 - Click "Add"
- **To Modify (Edit) a defined Server**
 - Select it from the drop-down list,
 - Click "Get Data"
 - Make any desired changes. Note that you can "Enable" and "Disable" a Server using this process.
 - Click "Update"

- **To Delete a defined Server**
 - Select it from the drop-down list,
 - Click "Delete"
- **To List all Servers**
 - Click "List All"

Configuration Data

Name	Enter a descriptive name to identify this Server entry.
Enable	Use this to Enable or Disable support for this Server, as required.
IP Address	The IP Address of the PC on your LAN which is running the Server software.
Protocol	Select the protocol (TCP or UDP) used by the Server.
Internal Port Number	Enter the port number used by the Server to connect to clients.
External Port Number	The port number used by clients when connecting to the Server. This is normally the same as the <i>Internal Port Number</i> . If it is different, this device will perform a "mapping" or "translation" function, allowing the server to use one port address, while clients use a different port address.



From the Internet, ALL Virtual Servers have the IP Address allocated by your ISP, as shown on the *WAN Status* screen.

Connecting to the Virtual Servers

Once configured, anyone on the Internet can connect to your Virtual Servers. They must use the IP Address allocated to this device by your ISP, as shown on the *WAN Status* screen.

e.g.

`http://203.70.212.52`

`ftp://203.70.212.52`

It is more convenient if you are using a Fixed IP Address from your ISP, rather than Dynamic. If using a Fixed IP Address, it is entered on the *WAN* screen.

Using this Device as a Virtual Web Server

It is possible to configure the FBR-1700TX itself as a Virtual Web Server. Once this is done, you can configure this device through the Internet.

For the remote PC, the destination IP Address is the *IP Address* shown on the *External LAN Port* screen.

Upon connecting to the FBR-1700TX, you will be prompted for the device password.



Ensure that a password has been set!

To make the FBR-1700TX a *Virtual Web Server*:

- Enable *Virtual Server* on the *Advanced Internet* screen
- Enable *Web Server* on the *Virtual Servers* screen.
- Enter the *Device IP Address* (from the *LAN* screen) as the IP Address of the Web Server.

Exposed Computer

This feature, if enabled, allows one (1) computer on your LAN to be exposed to all users on the Internet, allowing unrestricted 2-way communication between the "Exposed Computer" PC and other Internet users or Servers.

This allows connection to special-purpose servers which require proprietary client software, or 2-way user connections such as Video-conferencing, which requires both users to run special software.

To Internet users, the IP Address of the Exposed Computer is the IP Address allocated by your ISP, as shown on the "WAN Status" screen.



Note!

To allow unrestricted access, the Firewall in this device is disabled, creating a security risk.

You should use this feature only if the "Special Applications" feature is insufficient to allow an application to function correctly. This feature should be turned ON only when needed, and left OFF the rest of the time.

Configuring the Exposed Computer

Select *Advanced Internet* from the navigation bar, then *Exposed Computer*. You will see a screen like the following:



Figure 30: Exposed Computer Screen

Data**LAN IP Address****LAN IP Address**

Enter the IP Address of the PC on your LAN which will become the "Exposed Computer" PC.

If using DHCP, the LAN IP Address of a PC may change. To solve this problem, you can use either of these methods:

- Assign a fixed IP Address to the Exposed Computer PC, ensuring that its IP Address is NOT within the address range allocated by the DHCP Server.
- Reserve an IP Address for the Exposed Computer PC in the DHCP Server, using the *Access Control - PC* screen.



To Internet users, the IP Address of the Exposed Computer is the IP Address allocated by your ISP, as shown on the "WAN Status" screen.

Chapter 9

Access Control

9

This Chapter explains how to configure and use the FBR-1700TX's "Access Control" feature.

Overview

The Access Control feature allows administrators to restrict Internet Access by individual PCs. The process uses "Packet Filtering" to block or discard data packets. By default, no packets are blocked or discarded.

To use this feature:

- Set the desired restrictions on the "Everyone" group. All PCs are in the "Everyone" group unless explicitly moved to another group, using the *PC* screen.
- Set the desired restrictions on the other groups ("Group 1", "Group 2", etc) as needed.
- For each PC you wish to move from the "Everyone" group, enter their details on the *PCs* screen, and assign them to the desired group



Note!

You can limit Internet access for ALL PCs without entering ANY PC data. Simply apply the desired restrictions to the "Everyone" group.

It is also possible to define your own packet filters, and use these filters in addition to the pre-defined filters. Defining your own filters is optional.

Security Groups

The *Security Groups* screen is reached from the *Access Control* link on the navigation bar. An example screen is shown below.



Figure 31: Security Groups Screen

Note that the Security groups are pre-named "Everyone", "Group 1", "Group 2", "Group 3", and "Group 4".

Operations

- To Define a Security Group:**
 Select the group from the drop-down box, then enter the required data. If necessary, click *Clear Form* to remove the existing information shown on screen.
 Click the *Save* button when finished.
- To Change Access for an Existing Group:**
 Select the group from the drop-down box, click *Get Data* to view their

information, then change any fields you wish.

Click *Save* when finished.

- **To Assign PCs to a Security Group**

All PCs are initially in the "Everyone" group. Use the *PCs* screen to move individual PCs to other groups as required.

Data

The following data is required.

Internet Access for this Group

No restrictions	No packets are blocked. Use this to create an "Unlimited Access" group, or to temporarily remove restrictions.
Block all Access	Groups members cannot access the Internet at all. Use this to create the most restrictive group.
Use Packet Filter Table below	Use this to define intermediate levels of access. Using the Packet Filter table gives you fine control over Internet access. Simply select the items you wish to block. You can choose from the pre-defined filters in the <i>Applications to Block</i> column, or your own filters in the <i>TCP Packets to Discard</i> and <i>UPD Packets to Discard</i> column.

Packet Filter Table

Applications to Block	Any items checked will be blocked. Users will not be able to use the application.
------------------------------	---

TCP Packets to Discard	<p>This lists any TCP filters you have defined on the <i>Filters</i> screen. If no filters have been defined, this is empty.</p> <p>Multiple items can be selected (or deselected) by holding down the Ctrl key while selecting items.</p> <p>Selected items can NOT be accessed by members of this group.</p>
UDP Packets to Discard	<p>This lists any UDP filters you have defined on the <i>Filters</i> screen. If no filters have been defined, this is empty.</p> <p>Multiple items can be selected (or deselected) by holding down the Ctrl key while selecting items.</p> <p>Selected items can NOT be accessed by members of this group.</p>



If you have not defined your own filters, but wish to do so, refer to the "Filters" topic later in this Chapter.

Workstations

The *Workstations* screen is reached from the *Access Control* link on the navigation bar. An example screen is shown below.

Figure 32: PCs Screen

Note that the drop-down box lists all Workstations previously entered. If none have been entered, this box will be empty.

Operations

- To Add a New Workstation:**
 Ignore the drop-down box, click the *Clear Form* button, and enter the PC details in the fields provided.
 Click *Add* when finished.
- To Delete an Existing Workstation:**
 Select the PC from the drop-down box, click *Get Data* to view the information and confirm that this is the correct PC, then click the *Delete* button.

- **To Change an Existing Workstation's Details:**

Select the PC from the drop-down box, click *Get Data* to view their information, then change any fields you wish.

Click *Update* when finished.

- **To Generate a List of all Workstations:**

Just click on the *List All* button.

Data

Workstation Name	Enter a name to identify this Workstation.
Network Adapter Address	Hardware address for this PC. You can use the Windows "Winipcfg" program or your LAN management program to find this address.
Reserve entry in DHCP Table	Check this if you wish to reserve an IP address for this PC. This is useful if you have to provide the IP Address for other programs or users. If this is left unchecked, the following entry can be ignored.
Reserved IP Address	This relates to the entry above. Enter the reserved address here. This MUST be within the range used by the DHCP server (set on the <i>Device - Internal LAN Port</i> screen).
Security Group	Select the security group for this PC. If you only wish to reserve an IP Address, and are not using the security (access control) features, simply leave this at "Everyone".

Administrator Defined Filters

The Administrator Defined *Filters* screen is reached from the *Access Control* link on the navigation bar. An example screen is shown below.

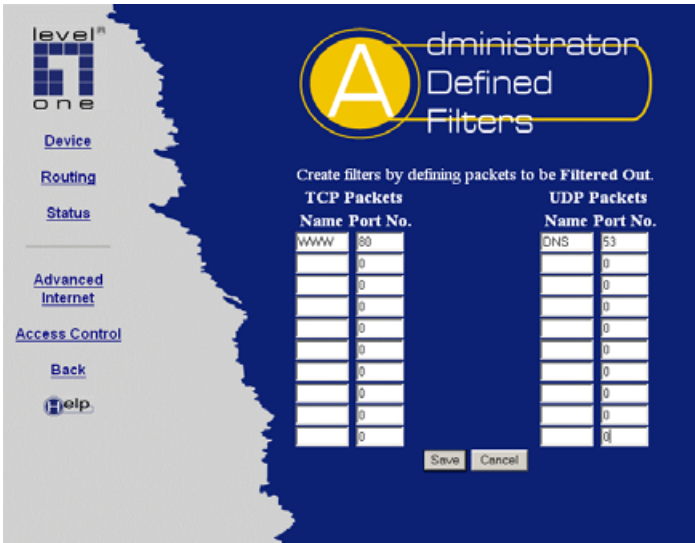


Figure 33: Administrator Defined Filters Screen

This screen allows you to define packet filters. When you define security groups, on the "Security Groups" screen, you can select from any filters defined here, as well as the pre-defined filters.

Data

TCP Packets

Define the packets you wish to be filtered out, by entering the following data.

TCP Packets

Name	Enter a descriptive name for this entry.
Port No.	Enter an integer representing the Port Number for this type of packet. This information can normally be provided by the service provider. Otherwise, a Network Analyzer or Packet Sniffer can be used to determine the correct port number.

UDP Packets

Name	Enter a descriptive name for this entry.
Port No.	Enter an integer representing the Port Number for this type of packet. This information can normally be provided by the service provider. Otherwise, a Network Analyzer or Packet Sniffer can be used to determine the correct port number.

Appendix A

Troubleshooting



This Appendix covers the most likely problems and their solutions.

Overview

This chapter covers some common problems that may be encountered while using the FBR-1700TX and some possible solutions to them. If you follow the suggested steps and the FBR-1700TX still does not function properly, contact your dealer for further advice.

General Problems

Problem 1: Can't connect to the FBR-1700TX to configure it.

Solution 1: Check the following:

- The FBR-1700TX is properly installed, LAN connections are OK, and it is powered ON.
- Ensure that your PC and the FBR-1700TX are on the same network segment. (If you don't have a router, this must be the case.)
- Ensure that your PC is using an IP Address within the range 192.168.0.2 to 192.168.0.254 and thus compatible with the FBR-1700TX's default IP Address of 192.168.0.1.

Also, the Network Mask should be set to 255.255.255.0 to match the FBR-1700TX.

In Windows, you can check these settings by using *Control Panel-Network* to check the *Properties* for the TCP/IP protocol.

Internet Access

Problem 1: When I enter a URL or IP address I get a time out error.

Solution 1: A number of things could be causing this. Try the following troubleshooting steps.

- Check if other PCs work. If they do, ensure that your PCs IP settings are correct (IP address, Network Mask, Default gateway and DNS).
- If the PCs are configured correctly, but still not working, check the FBR-1700TX. Ensure that it is connected and ON. Connect to it and check its settings and status. (If you can't connect to it, check the LAN and power connections.)
- If the FBR-1700TX is configured correctly, check your Internet connection (DSL/Cable modem etc) to see that it is working correctly.

Problem 2: Some applications do not run properly when using the FBR-1700TX.

Solution 2: The FBR-1700TX processes the data passing through it, so it is not transparent.

Use the *Special Applications* feature to allow the use of Internet applications which do not function correctly.

If this does solve the problem you can use the *Exposed Computer* function. This should work with almost every application, but:

- It is a security risk, since the firewall is disabled.
- Only one (1) PC can use this feature.
- When the *Exposed Computer* feature is being used, the *Special Applications* and *Virtual Server* features should be disabled.

Appendix B

Specifications



FBR-1700TX 7 Port Broadband Router For ADSL/Cable Modem

Model No.:	FBR-1700TX
Dimensions	250mm(W) * 180mm(D) * 40mm(H)
Operating Temperature	0° C to 40° C
Storage Temperature	-10° C to 70° C
Network Protocol:	TCP/IP
Network Interface:	9 Ethernet: 7 * 10/100BaseT (RJ45) auto-switching hub ports for LAN devices 1 * 10/100BaseT (RJ45) "uplink" port 1 * 10BaseT (RJ45) for WAN
Printer Port	1 * parallel printer port
LEDs	20
External Power Adapter	9 V DC, 1.5A

FCC Statement:

This device complies with Part 15 of the FCC Rules. Operation is subject to the following two conditions:

- (1) This device may not cause harmful interference.
- (2) This device must accept any interference received, including interference that may cause undesired operation.

CE Marking Warning

This is a Class B product. In a domestic environment this product may cause radio interference in which case the user may be required to take adequate measures.