



Fixed Dome Network Camera Hardware User Manual

FCS-3053, FCS-3063

Ver. 2014/01/16

Table of Contents

Safety Instructions.....	5
Introduction	6
<hr/>	
List of Models.....	6
Package Contents.....	6
Physical Description	7
FCS-3053 / FCS-3063	7
Installing the Camera on a Surface	8
<hr/>	
Step 1: Unpack the Camera.....	8
Step 2: Attach the Mounting Plate.....	9
Step 3: Connect the Cable	10
Step 4: Attach the Fixing Bracket.....	10
Step 5: Install the Camera.....	12
Step 6: Connect to Network	13
Step 7: Access the Camera Live View	13
Step 8: Adjust the Viewing Angle and Focus	13
Step 9: Close the Dome Cover	14
Other Adjustments and Accessories	15
<hr/>	
How to Adjust the Viewing Angle and Focus	15
FCS-3053 / FCS-3063	15
How to Replace the Dome Cover	16
Accessing the Camera	18
<hr/>	
Configure the IP Addresses	18
Using DHCP Server to Assign IP Addresses.....	18
Using the Default Camera IP Address.....	20
Access the Camera.....	22

Hardware Manual

Precautions

Read these instructions

You should read all the safety and operating instructions before using this product.

Heed all warnings

You must adhere to all the warnings on the product and in the instruction manual. Failure to follow the safety instruction given may directly endanger people, cause damage to the system or to other equipment.

Servicing

Do not attempt to service this video device yourself as opening or removing covers may expose you to dangerous voltage or other hazards. Refer all servicing to qualified service personnel.

Trademarks

All names used in this manual are probably registered trademarks of respective companies.

Liability

Every reasonable care has been taken during the writing of this manual. Please inform your local office if you find any inaccuracies or omissions. We cannot be held responsible for any typographical or technical errors and reserve the right to make changes to the product and manuals without prior notice.

Hardware Manual

Federal Communications Commission Statement



This equipment has been tested and found to comply with the limits for a class B digital device, pursuant to Part 15 of the FCC Rules. These limits are designed to provide reasonable protection against harmful interference in a residential installation. This equipment generates, uses, and can radiate radio frequency energy and, if not installed and used in accordance with the instructions, may cause harmful interference to radio communications. However, there is no guarantee that interference will not occur in a particular installation. If this equipment does cause harmful interference to radio or television reception, which can be determined by turning the equipment off and on, the user is encouraged to try to correct the interference by one or more of the following measures:

- Reorient or relocate the receiving antenna.
- Increase the separation between the equipment and receiver.
- Connect the equipment into an outlet on a circuit different from that to which the receiver is connected.
- Consult the dealer or an experienced radio/TV technician for help.

Warning: Changes or modifications to the equipment that are not expressly approved by the responsible party for compliance could void the user's authority to operate the equipment.

European Community Compliance Statement



This product has been tested and found to comply with the limits for Class B Information Technology Equipment according to European Standard EN 55022 and EN 55024. In a domestic environment, this product may cause radio interference in which cause the user may be required to take adequate measures.

Safety Instructions

Don't open the housing of the product

Cleaning

Disconnect this video product from the power supply before cleaning.

Attachments

Do not use attachments not recommended by the video product manufacturer as they may cause hazards.

Water and Moisture

Do not use this video product near water, for example, near a bathtub, washbowl, kitchen sink, or laundry tub, in a wet basement, or near a swimming pool and the like.

Don't use accessories not recommended by the manufacturer

Only install this device in a dry place protected from weather

Servicing

Do not attempt to service this video product yourself as opening or removing covers may expose you to dangerous voltage or other hazards. Refer all servicing to qualified service personnel.

Damage Requiring service

Disconnect this video product from the power supply immediately and refer servicing to qualified service personnel under the following conditions.

- 1) When the power-supply cord or plug is damaged
- 2) If liquid has been spilled, or objects have fallen into the video product.
- 3) If the video product has been directly exposed to rain or water.
- 4) If the video product does not operate normally by following the operating Instructions in this manual. Adjust only those controls that are covered by the instruction manual, as an improper adjustment of other controls may result in damage, and will often require extensive work by a qualified technician to restore the video product to its normal operation.



Safety Check

Upon completion of any service or repairs to this video product, ask the service technician to perform safety checks to determine if the video product is in proper operating condition.

Introduction




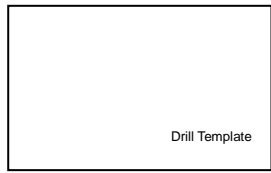

List of Models

This hardware manual contains the following models:

FCS-3053		Fixed Dome Network Camera, 3-Megapixel, PoE 802.3af, Day & Night, IR LEDs
FCS-3063		Fixed Dome Network Camera, 5-Megapixel, PoE 802.3af, Day & Night, IR LEDs, WDR

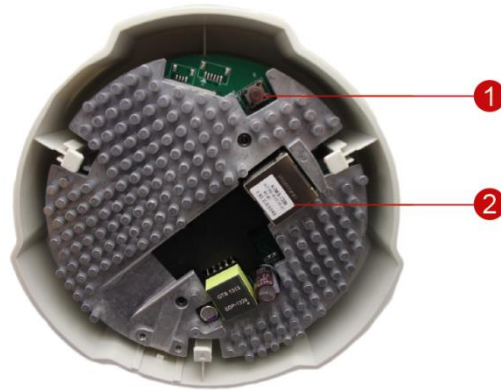
From the installation perspective, these models are similar; therefore, one manual is used for all of them.

Package Contents

Camera	
	or 
Mounting Screw Kit	Drill Template
	 Drill Template
Quick Installation Guide	
	

Physical Description

FCS-3053 / FCS-3063



1) Reset Button

2) Ethernet Port

1) Ethernet Port

Connects to the network using a standard Ethernet cable (CAT5 / CAT6).

2) Reset Button

Restores the camera factory default settings. To do the reset, press and hold the Reset Button for at least 5 seconds or until the Ethernet port LEDs turn off.

Installing the Camera on a Surface

This section describes the procedures in installing the camera directly on a flat surface, such as the ceiling or the wall. For simplicity, most of the camera images used in the succeeding sections were taken using the camera model with heat sink; same procedures apply to the model without heat sink unless specified.

Step 1: Unpack the Camera

NOTE: To avoid scratches or leaving fingerprints on the dome cover, it is recommended to retain the plastic covering the dome cover until the camera is completely installed.

1. Slide the mounting plate counter-clockwise to detach it from the camera.



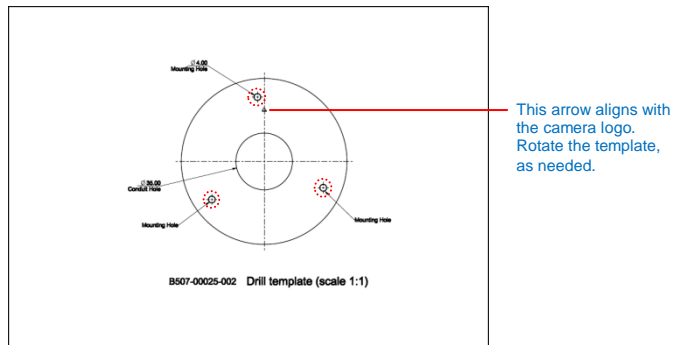
2. Remove the silicon bag.



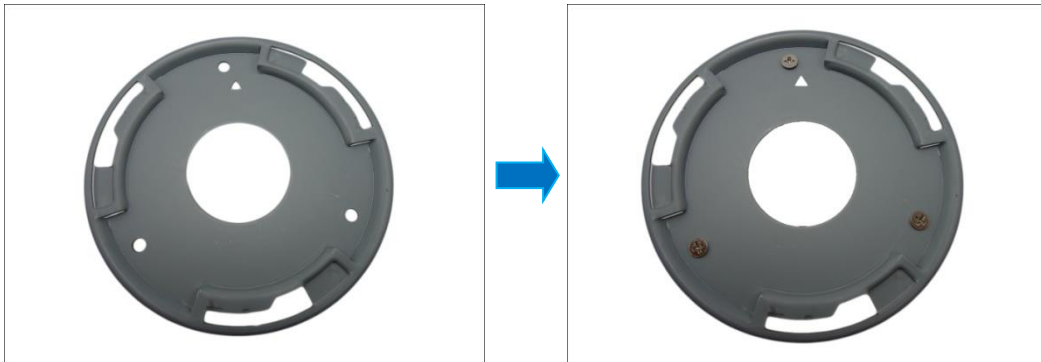
Step 2: Attach the Mounting Plate

NOTE: Before installation, consider the camera viewing angle and logo placement. The arrow on the drill template and mounting plate align with the direction of the camera logo. Rotate the drill template as needed.

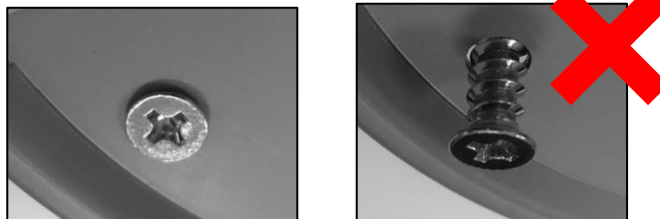
1. Using the drill template, mark the holes on the surface. If necessary, drill the three (3) screw holes and insert the plastic plugs.



2. Determine how the cable will be routed:
 - a. **The cable will pass through a hole on the surface:** In this case, drill the cable hole based on the drill template.
 - b. **The cable will go along the surface:** Skip this step.
3. Attach the mounting plate on the surface using the three (3) supplied screws. Note that the direction of the arrow on the mounting plate aligns with the camera logo.



NOTE: Make sure the screw is flat on the plate.



Step 3: Connect the Cable

1. **If the cable will pass through the hole on the surface**, route the network cable through the hole. **If the cable will go along the surface**, remove the cable exit tab on the camera and route the cable along the surface.



Cable Passing Through a Hole on the Surface

or



Cable Going Along the Surface

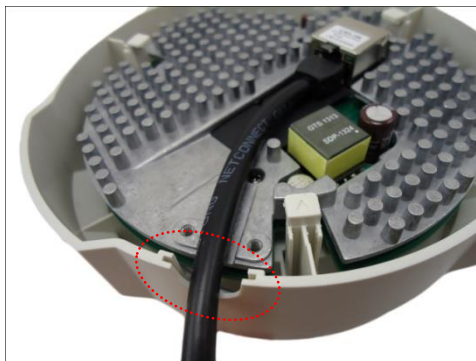
2. Connect the network cable to the Ethernet port of the camera.



Step 4: Attach the Fixing Bracket

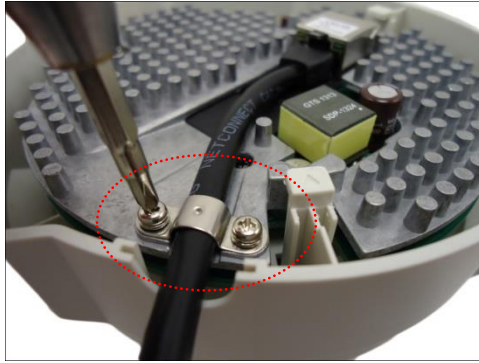
This step is required only for FCS-3053, FCS-3063 camera models **with cables going along the surface**. Otherwise, skip this step.

1. Route the cable to pass through the gap on the camera.



Hardware Manual

2. Attach the fixing bracket using the two (2) supplied screws to secure the cable.

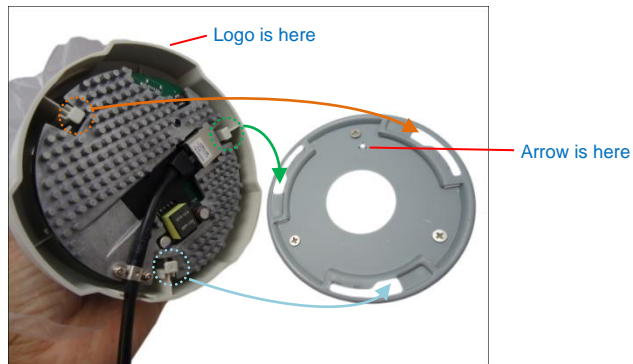


Step 5: Install the Camera

1. ***If the cable passes through a hole on the surface***, push the extra length of cable into the hole. Otherwise, skip this step.



2. With the arrow on the mounting plate aligned to the direction of the camera logo, insert the hooks on the camera to the slots on the mounting plate.

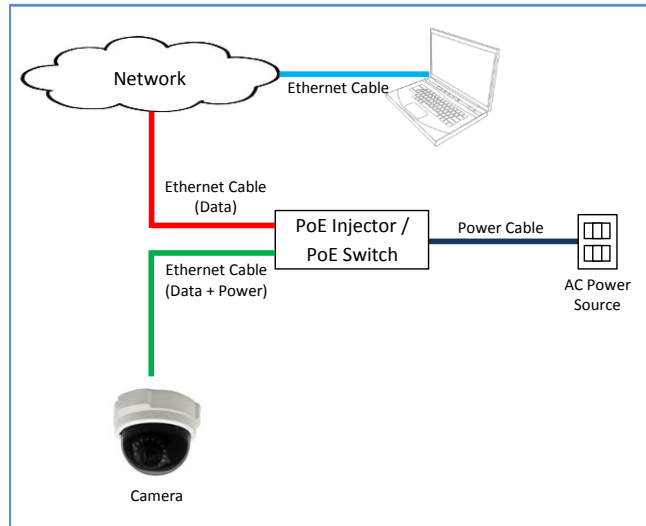


3. Slide the camera clockwise until it locks into place.



Step 6: Connect to Network

Connect the other end of the network cable to a Power-over-Ethernet (PoE) switch or injector. Then, connect the PoE switch or injector to a network or PC and a power source. See example connection diagram below.



Step 7: Access the Camera Live View

See [Accessing the Camera](#) on page 18 for more information on how to access the Live View screen of the camera.

Step 8: Adjust the Viewing Angle and Focus

1. Rotate the dome cover counter-clockwise and then pull to remove it.



2. Based on the live view, adjust the viewing angle and orientation of the camera. Adjustments vary depending on model; see [How to Adjust the Viewing Angle and Focus](#) on page 15 for detailed information.

Step 9: Close the Dome Cover

1. Slightly press on the edges of the dome cover and push it into the groove until it clicks.



2. Remove the plastic covering the dome cover.



Below is an installation example.



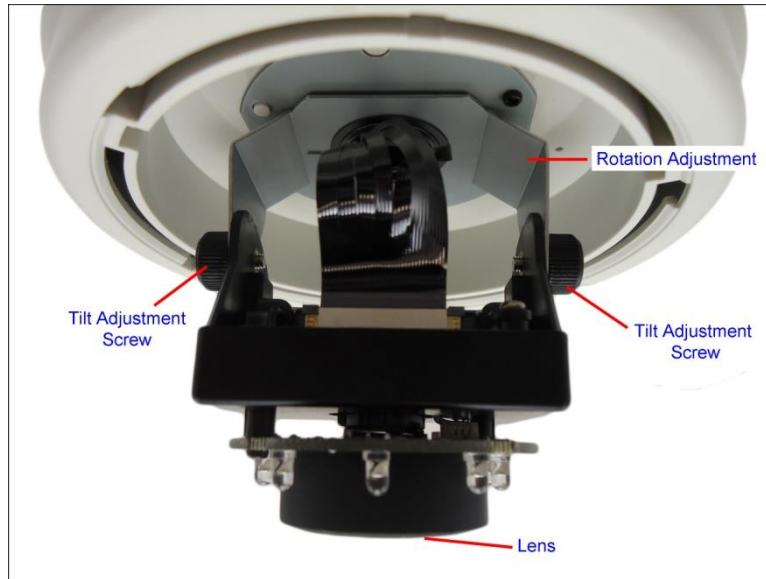
Other Adjustments and Accessories

How to Adjust the Viewing Angle and Focus

This section describes the procedures in adjusting the viewing angle and focus of the camera.

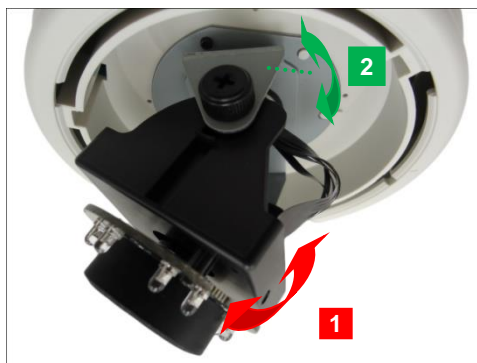
FCS-3053 / FCS-3063

Camera Parts Overview

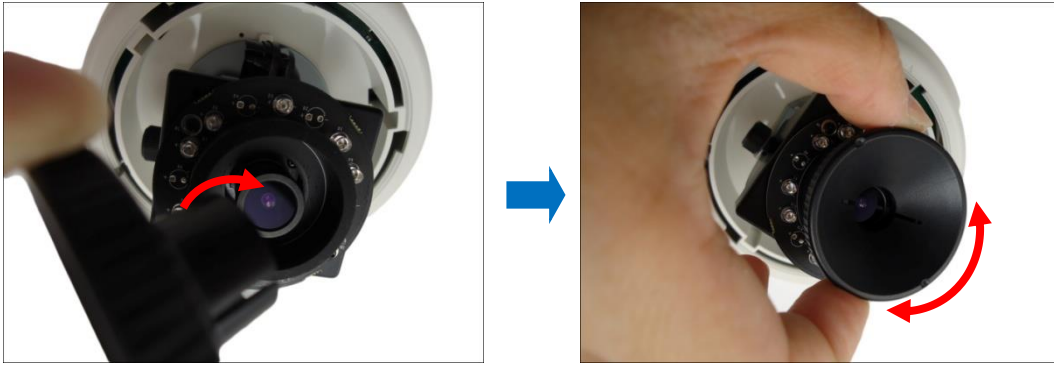


Adjustment Procedures

1. Loosen the tilt adjustment screws, adjust the tilt, and then tighten back the screws to fix the tilt position.
2. Move the rotation adjustment to rotate the viewing orientation.



3. Attach the bundled lens focus tuner unto the lens and turn left or right to adjust the focus.



How to Replace the Dome Cover

For more discrete surveillance needs, the bundled dome cover can be replaced with a smoke dome cover available for purchase. To replace the dome cover, do the following:

1. Rotate the current dome cover counter-clockwise and then pull to remove it.



2. Align the shroud of the replacement dome cover to the camera lens.



3. Slightly press on the edges of the dome cover and push it into the groove until it clicks.

Hardware Manual



4. Remove the plastic covering the dome cover.



Accessing the Camera

Configure the IP Addresses

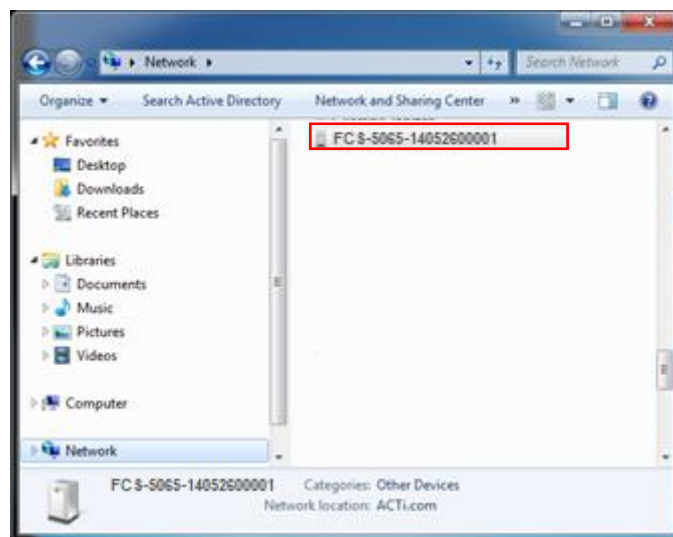
In order to be able to communicate with the camera from your PC, both the camera and the PC have to be within the same network segment. In most cases, it means that they both should have very similar IP addresses, where only the last number of the IP address is different from each other. There are 2 different approaches to IP Address management in Local Area Networks – by DHCP Server or Manually.

Using DHCP Server to Assign IP Addresses

If you have connected the computer and the camera into the network that has a DHCP server running, then you do not need to configure the IP addresses at all – both the camera and the PC would request a unique IP address from DHCP server automatically. In such case, the camera will immediately be ready for the access from the PC. The user, however, might not know the IP address of the camera yet. It is necessary to know the IP address of the camera in order to be able to access it by using a Web browser.

The quickest way to discover the cameras in the network is to use the simplest network search, built in the Windows system – just by pressing the “Network” icon, all the cameras of the local area network will be discovered by Windows thanks to the UPnP function support of our cameras.

In the example below, we successfully found the camera that we had just connected to the network.



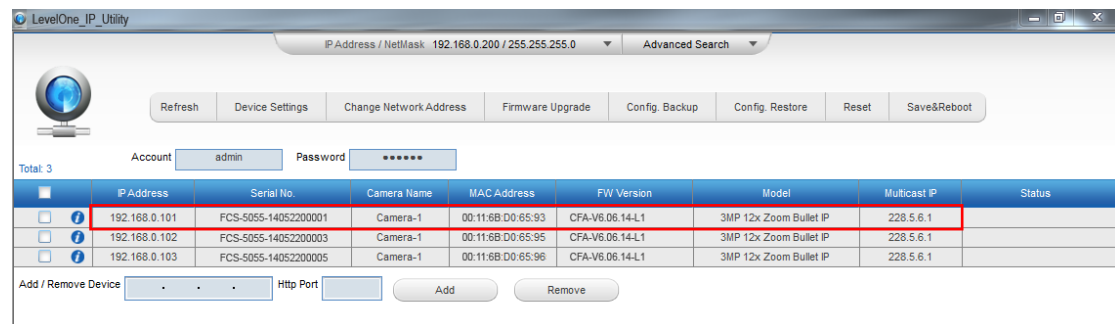
Hardware Manual

By double-clicking with the left mouse on the camera model, it is possible to automatically launch the default browser of the PC with the IP address of the target camera filled in the address bar of the browser already.

If you work with our cameras regularly, then **there is even a better way to discover the cameras in the network** – by using **IP Utility**. The IP Utility is a light software tool that can not only discover the cameras, but also list lots of valuable information, such as IP and MAC addresses, serial numbers, firmware versions, etc, and allows quick configuration of multiple devices at the same time.

The IP Utility can be downloaded for free from our website.

With just one click, you can launch the IP Utility and there will be an instant report as follows:



The screenshot shows the LevelOne_IP_Utility application window. At the top, there is a title bar with the text "LevelOne_IP_Utility" and a standard Windows window control set. Below the title bar, there is a status bar showing "IP Address / NetMask 192.168.0.200 / 255.255.255.0" and an "Advanced Search" dropdown menu. The main interface features a navigation bar with buttons for "Refresh", "Device Settings", "Change Network Address", "Firmware Upgrade", "Config. Backup", "Config. Restore", "Reset", and "Save&Reboot". Below this, there are input fields for "Account" (containing "admin") and "Password" (containing "*****"). A "Total: 3" indicator is visible on the left. The central part of the window is a table with the following columns: IP Address, Serial No., Camera Name, MAC Address, FW Version, Model, Multicast IP, and Status. The table contains three rows of data, with the first row highlighted in red. Below the table, there is an "Add / Remove Device" section with a grid of input fields and "Add" and "Remove" buttons.

	IP Address	Serial No.	Camera Name	MAC Address	FW Version	Model	Multicast IP	Status
<input type="checkbox"/>	192.168.0.101	FCS-5055-14052200001	Camera-1	00:11:6B:D0:65:93	CFA-V6.06.14-L1	3MP 12x Zoom Bullet IP	228.5.6.1	
<input type="checkbox"/>	192.168.0.102	FCS-5055-14052200003	Camera-1	00:11:6B:D0:65:95	CFA-V6.06.14-L1	3MP 12x Zoom Bullet IP	228.5.6.1	
<input type="checkbox"/>	192.168.0.103	FCS-5055-14052200005	Camera-1	00:11:6B:D0:65:96	CFA-V6.06.14-L1	3MP 12x Zoom Bullet IP	228.5.6.1	

You can quickly see the camera model in the list. Click on the IP address to automatically launch the default browser of the PC with the IP address of the target camera filled in the address bar of the browser already.

Hardware Manual

Using the Default Camera IP Address

If there is no DHCP server in the given network, the user may have to assign the IP addresses to both PC and camera manually to make sure they are in the same network segment.

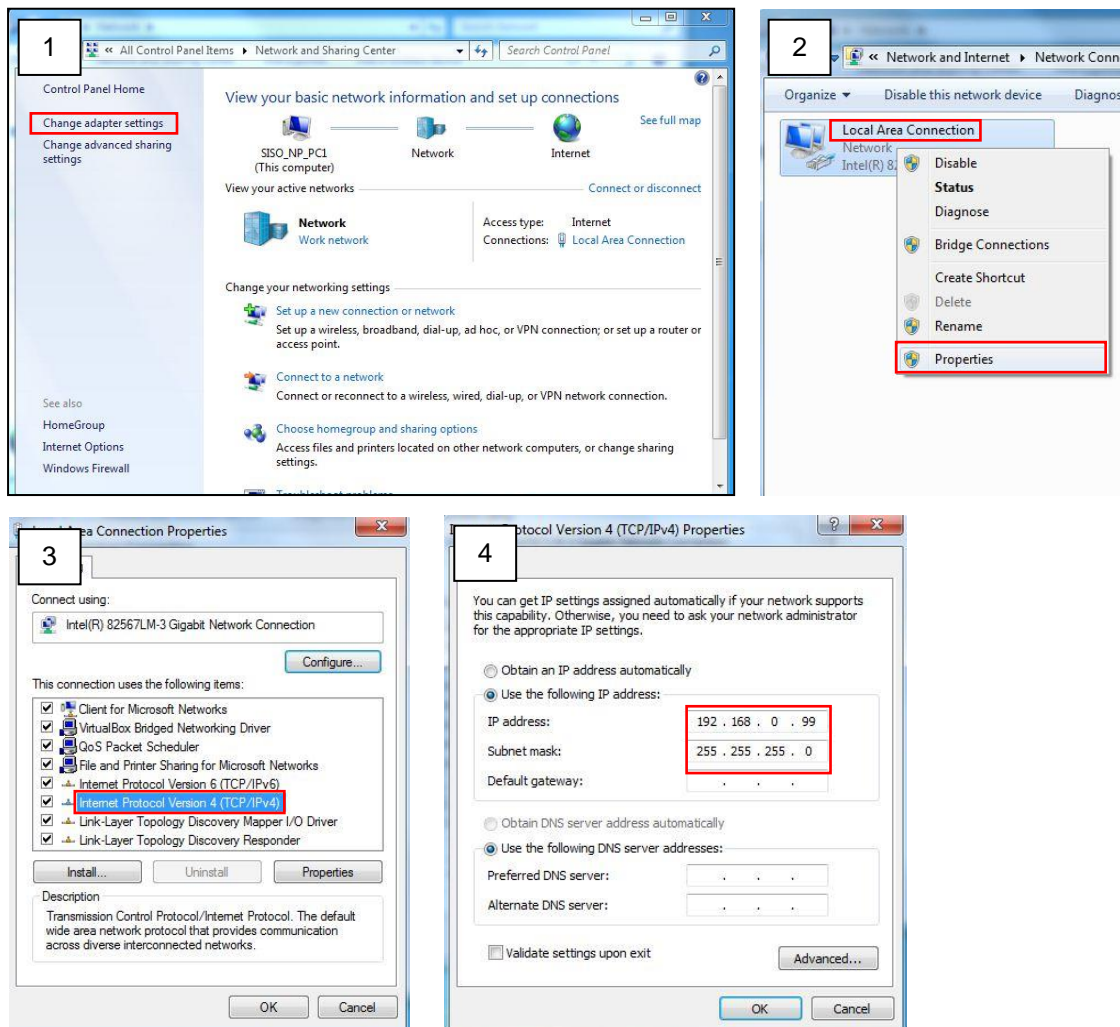
When the camera is plugged into network and it does not detect any DHCP services, it will automatically assign itself a default IP:

192.168.0.100

Whereas the default port number would be **80**. In order to access that camera, the IP address of the PC has to be configured to match the network segment of the camera.

Manually adjust the IP address of the PC:

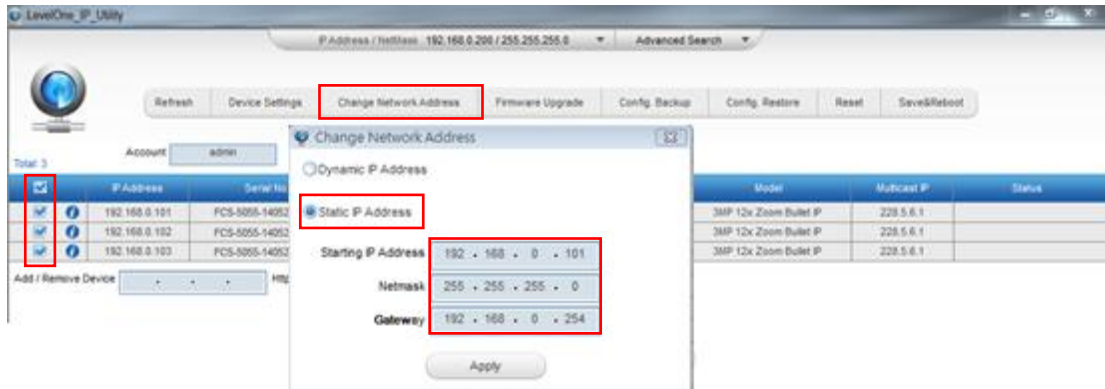
In the following example, based on Windows 7, we will configure the IP address to **192.168.0.99** and set Subnet Mask to **255.255.255.0** by using the steps below:



Hardware Manual

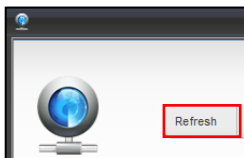
Manually adjust the IP addresses of multiple cameras:

If there are more than 1 camera to be used in the same local area network and there is no DHCP server to assign unique IP addresses to each of them, all of the cameras would then have the initial IP address of **192.168.0.100**, which is not a proper situation for network devices – all the IP addresses have to be different from each other. The easiest way to assign cameras the IP addresses is by using **IP Utility**:



With the procedure shown above, all the cameras will have unique IP addresses, starting from 192.168.0.101. In case there are 20 cameras selected, the last one of the cameras would have the IP 192.168.0.120.

Later, by pressing the “Refresh” button of the IP Utility, you will be able to see the list of cameras with their new IP addresses.



Please note that it is also possible to change the IP addresses manually by using the Web browser. In such case, please plug in only one camera at a time, and change its IP address by using the Web browser before plugging in the next one. This way, the Web browser will not be confused about two devices having the same IP address at the same time.

Access the Camera

Now that the camera and the PC are both having their unique IP addresses and are under the same network segment, it is possible to use the Web browser of the PC to access the camera.

You can use **any of the browsers** to access the camera, however, the full functionality is provided only for **Microsoft Internet Explorer**.

The browser functionality comparison:

Functionality	Internet Explorer	Other browsers
Live Video	Yes	Yes*
Live Video Area Resizable	Yes	No
PTZ Control	Yes	Yes
Capture the snapshot	Yes	Yes
Video overlay based configuration (Motion Detection regions, Privacy Mask regions)	Yes	No
All the other configurations	Yes	Yes

* When using non-Internet Explorer browsers, free third-party software plug-ins must be installed to the PC first to be able to get the live video feed from the camera. Check the firmware version of the camera to determine which plug-in is necessary:

Firmware Version	Required Plug-In
CFA-V6.04.xx-xx or older	Basic VLC Media Player (http://www.videolan.org)
CFA-V6.05.xx-xx or newer	QuickTime (http://www.apple.com/quicktime/download/)

The camera firmware version can be found on the **FW Version** column of the IP utility or access the **Setup** page of the Web Configurator (see page 25).

***Disclaimer Notice:** The camera manufacturer does not guarantee the compatibility of its cameras with VLC player or QuickTime – since these are third party softwares. The third parties have the right to modify their utility any time which might affect the compatibility. In such cases, please use Internet Explorer browser instead.*

When using Internet Explorer browser, the ActiveX control for video stream management will be downloaded from the camera directly – the user just has to accept the use of such control when prompted so. No other third party utilities are required to be installed in such case.

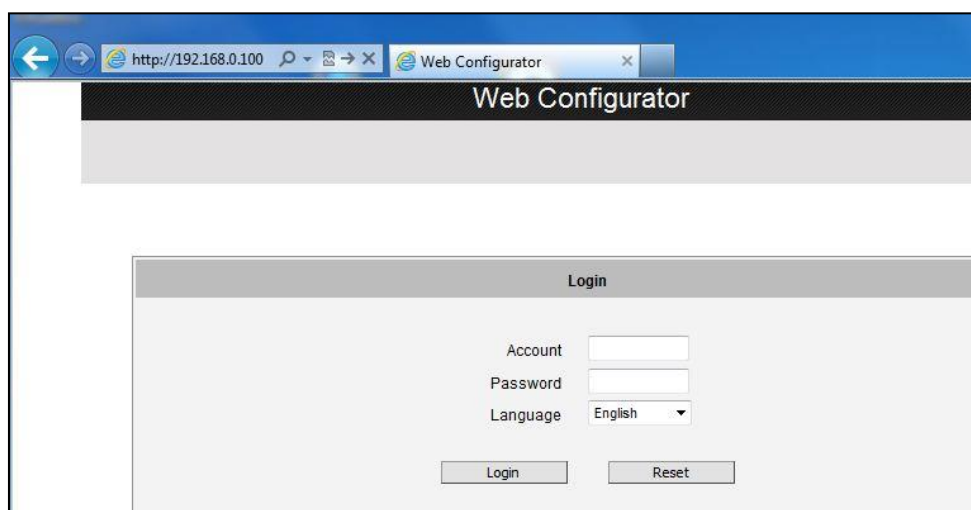
Hardware Manual

The following examples in this manual are based on Internet Explorer browser in order to cover all functions of the camera.

Assuming that the camera's IP address is **192.168.0.100**, you can access it by opening the Web browser and typing the following address into Web browser's address bar:

http://192.168.0.100

Upon successful connection to the camera, the user interface called **Web Configurator** would appear together with the login page. The HTTP port number was not added behind the IP address since the default HTTP port of the camera is 80, which can be omitted from the address for convenience.



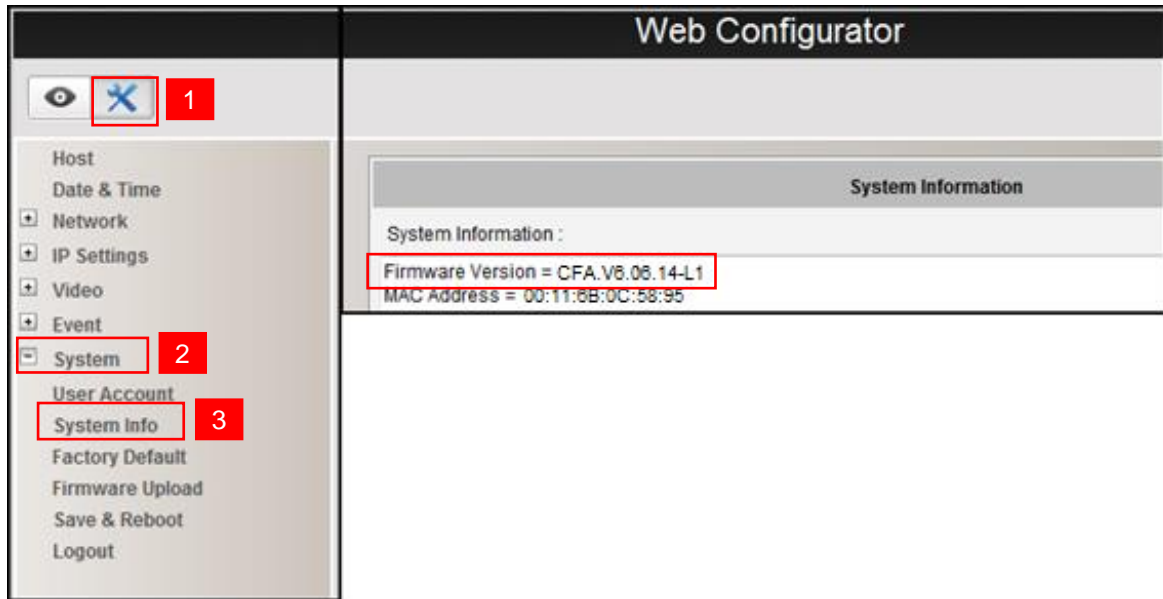
Before logging in, you need to know the factory default Account and Password of the camera.

Account: **Admin**

Password: **123456**

Hardware Manual

To check the firmware version through the Web Configurator, access the **Setup** page and click **System > System Info**.



For further operations, please refer to the **Firmware User Manual**.