



PTZ Dome Network Camera Hardware User Manual

FCS-4043, FCS-4044

Ver.2014/01/07

Table of Contents

Precautions4

Safety Instructions6

Introduction.....7

The List of Models7
Package Contents.....8
Physical Description9

Installing the Camera on a Surface 11

Step 1: Drill the Holes 11
Step 2: Open the Dome Cover 12
Step 3: Prepare for Waterproof and Connect the Cable 14
 Waterproof Solution with Naked Cable 15
 Waterproof Solution with Conduit..... 18
Step 4: Install the Camera to the Surface.....23
Step 5: Close the Dome Cover23
Step 6: Connect to the Network.....24
Step 7: Access the Camera Live View24

Other Connections25

Connecting a Power Adapter (Optional)25
Connecting the DI/DO and Audio Devices (Optional)27
 How to Connect DI/DO Devices..... 27
 How to Connect Audio Devices..... 30

Other Adjustments and Accessories31

Hardware Manual

How to Remove / Install the Camera Module.....	31
How to Remove the Camera Module	31
How to Install the Camera Module	32
How to Replace the Dome Cover	33
How to Insert / Remove a Memory Card	37
How to Insert the Memory Card	37
How to Remove the Memory Card.....	37

Accessing the Camera38

Configure the IP Addresses	38
Access the Camera.....	42

Precautions

Read these instructions

You should read all the safety and operating instructions before using this product.

Heed all warnings

You must adhere to all the warnings on the product and in the instruction manual. Failure to follow the safety instruction given may directly endanger people, cause damage to the system or to other equipment.

Servicing

Do not attempt to service this video device yourself as opening or removing covers may expose you to dangerous voltage or other hazards. Refer all servicing to qualified service personnel.

Trademarks

All names used in this manual are probably registered trademarks of respective companies.

Liability

Every reasonable care has been taken during the writing of this manual. Please inform your local office if you find any inaccuracies or omissions. We cannot be held responsible for any typographical or technical errors and reserve the right to make changes to the product and manuals without prior notice.

Hardware Manual

Federal Communications Commission Statement



This equipment has been tested and found to comply with the limits for a class B digital device, pursuant to Part 15 of the FCC Rules. These limits are designed to provide reasonable protection against harmful interference in a residential installation. This equipment generates, uses, and can radiate radio frequency energy and, if not installed and used in accordance with the instructions, may cause harmful interference to radio communications. However, there is no guarantee that interference will not occur in a particular installation. If this equipment does cause harmful interference to radio or television reception, which can be determined by turning the equipment off and on, the user is encouraged to try to correct the interference by one or more of the following measures:

- Reorient or relocate the receiving antenna.
- Increase the separation between the equipment and receiver.
- Connect the equipment into an outlet on a circuit different from that to which the receiver is connected.
- Consult the dealer or an experienced radio/TV technician for help.

Warning: Changes or modifications to the equipment that are not expressly approved by the responsible party for compliance could void the user's authority to operate the equipment.

European Community Compliance Statement



This product has been tested and found to comply with the limits for Class B Information Technology Equipment according to European Standard EN 55022 and EN 55024. In a domestic environment, this product may cause radio interference in which cause the user may be required to take adequate measures.

Safety Instructions

Cleaning

Disconnect this video product from the power supply before cleaning.

Attachments

Do not use attachments not recommended by the video product manufacturer as they may cause hazards.

Do not use accessories not recommended by the manufacturer

Only install this device in a dry place protected from weather

Servicing

Do not attempt to service this video product yourself. Refer all servicing to qualified service personnel.

Damage Requiring service

Disconnect this video product from the power supply immediately and refer servicing to qualified service personnel under the following conditions.

- 1) When the power-supply cord or plug is damaged
- 2) If liquid has been spilled, or objects have fallen into the video product.
- 3) If the inner parts of video product have been directly exposed to rain or water.
- 4) If the video product does not operate normally by following the operating Instructions in this manual. Adjust only those controls that are covered by the instruction manual, as an improper adjustment of other controls may result in damage, and will often require extensive work by a qualified technician to restore the video product to its normal operation.



Safety Check

Upon completion of any service or repairs to this video product, ask the service technician to perform safety checks to determine if the video product is in proper operating condition.

Introduction

The List of Models

This hardware manual contains the following models:

FCS-4044		PTZ Dome Network Camera, 5-Megapixel, PoE 802.3af, Outdoor, Day & Night, 10x
FCS-4043		PTZ Dome Network Camera, 3-Megapixel, Outdoor, PoE 802.3af, Day & Night, 10x, WDR

From the installation perspective these models are very similar; therefore you can use one manual for all of them.

Hardware Manual

Package Contents

Camera	Mounting Screw Kit	Hexagon Screwdriver
		
Drill Template	Conduit Gland	Cable Gland
		
Terminal Block (for Power)	Terminal Block (for DI/DO and Audio In/Out)	Quick Installation Guide
		

Physical Description

Below is an illustration of the camera module.



1) Ethernet Port

Connects to a network using an Ethernet cable.

2) DC 12V Power Input

In case the camera is connected to a non-PoE (Power over Ethernet) switch, use this connector to connect the camera to an external power adapter (not included). See [Connecting a Power Adapter \(Optional\)](#) on page 25 for more information.

3) Reset Button

The purpose of reset button is to restore the factory default settings of the camera, including the administrator's password.

The reset button can be used for following purposes:

1. The administrator's password has been forgotten and therefore the camera cannot be accessed.
2. In case of IP address, mask, or allow/deny filter related issues, resulting with inability to modify these settings.
3. In case of connectivity issues or abnormal video quality.

How to do the reset properly?

Using a pointed object, such as a pen, press and hold the reset button for 5 seconds or until the blue LED (underneath the camera module) lights up.

Hardware Manual

4) Digital Input / Output (DI/DO) and Audio Input / Output

This connector connects to digital input or output devices, such as an alarm trigger, panic button, etc., as well as audio input and output devices, such as microphones and speakers. Digital Input (DI) and Digital Output (DO) devices are used in applications like motion detection, event triggering, alarm notifications, etc. See [Connecting the DI/DO and Audio Devices \(Optional\)](#) on page 27 for information.

5) Memory Card Slot

Insert a memory card into this slot for local recording purposes. See [How to Insert / Remove a Memory Card](#) on page 37 for more information.

NOTE: Supports microSDHC and microSDXC cards.

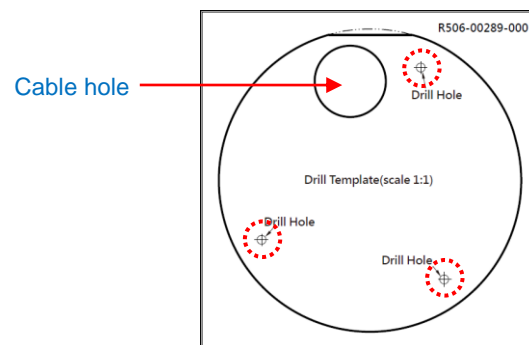
Installing the Camera on a Surface

This section describes the procedures in installing the camera on a flat surface such as a hard or dropped ceiling and straight or tilted walls. Before installation, make sure the wall or the ceiling can bear more than the weight of the camera.

Step 1: Drill the Holes

Before drilling the holes on the ceiling or wall, note the direction of the connectors side of the camera, which is also the opposite side of the camera logo. This influences the camera placement and where you should drill the hole where the cables will pass through or how the cables will go along the ceiling or wall.

1. Attach the supplied drill template on the surface according to the preferred camera orientation.
2. Determine how the cables will be routed: ***pass through the surface*** or ***along the surface***.
 - ***If the cables will pass through the surface***, drill the cable hole and the three (3) screw holes on the surface.



- ***If the cables will be routed along the surface***, just drill the three (3) screw holes on the surface.
3. Detach the drill template from the surface and insert the plastic plugs into the screw holes.

Step 2: Open the Dome Cover

NOTE: To avoid scratches or leaving fingerprints on the dome cover, it is recommended to retain the plastic covering the dome cover until the camera is completely installed. However, the plastic has been removed on some of the pictures in this documentation to show clarity of the procedures being described.

1. **If the cables will pass through the surface**, remove the metal cap covering the bottom hole of the camera, and attach the cap to the side hole to close it. The cables will be routed to pass this hole from the surface.



2. With the bundled hex screwdriver, loosen the three (3) screws securing the dome cover.



3. Carefully lift to open the dome cover and place it on the side of the camera.

NOTE: Do not abruptly lift the dome cover; it is attached to the camera with a spring wire.



Hardware Manual

4. Remove the Styrofoam protecting the camera.





Step 3: Prepare for Waterproof and Connect the Cable

The camera comes with two (2) glands used for waterproof installation:

- **Cable Gland:** For use with an **Exterior-grade Ethernet cable**. Exterior-grade Ethernet cables are already waterproof. See [Waterproof Solution with Naked Cable](#) on page 15.
- **Conduit Gland:** For use with a flexible conduit. This solution is recommended when an exterior-grade Ethernet cable is not available or other cables, such as power adapter, DI/DO devices, etc., will be connected to the camera. See [Waterproof Solution with Conduit](#) on page 18.

Determine the type of waterproof solution that is applicable to your installation requirements and prepare the necessary accessories or purchase extra materials.

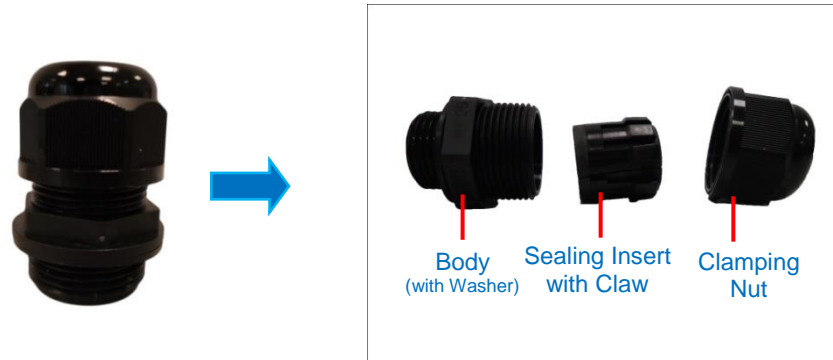
Cable Gland	Conduit Gland
 <p data-bbox="236 1294 734 1370">For use with an Exterior-grade Ethernet cable (not included in the package).</p>	 <p data-bbox="805 1294 1252 1348">For use with 1/2" flexible conduit (not included in the package)</p>

Hardware Manual

Waterproof Solution with Naked Cable

This section describes the procedures in using the bundled cable gland and an exterior-grade Ethernet cable.

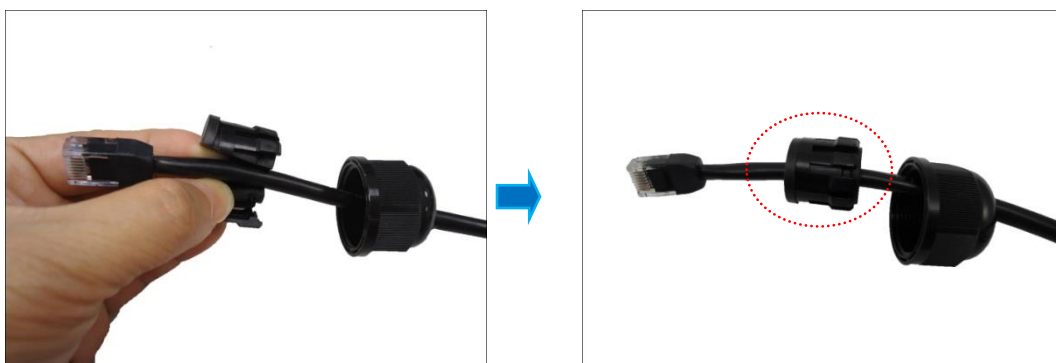
1. Disassemble the cable gland as shown below:



2. Insert the clamping nut into the Ethernet cable.



3. Insert the sealing insert with claw.



Hardware Manual

4. Attach the cable gland body to the hole of the camera.



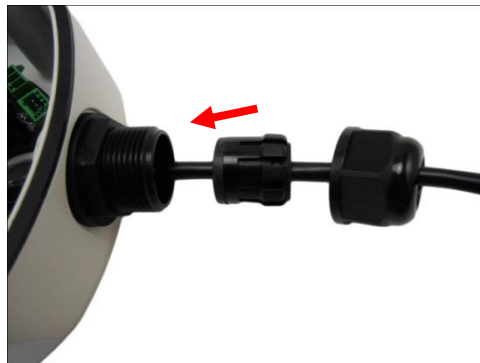
Attach to Camera Side Hole

or



Attach to Camera Bottom Hole

5. ***If the cable will be routed along the surface***, pull the network cable through the side conduit hole.

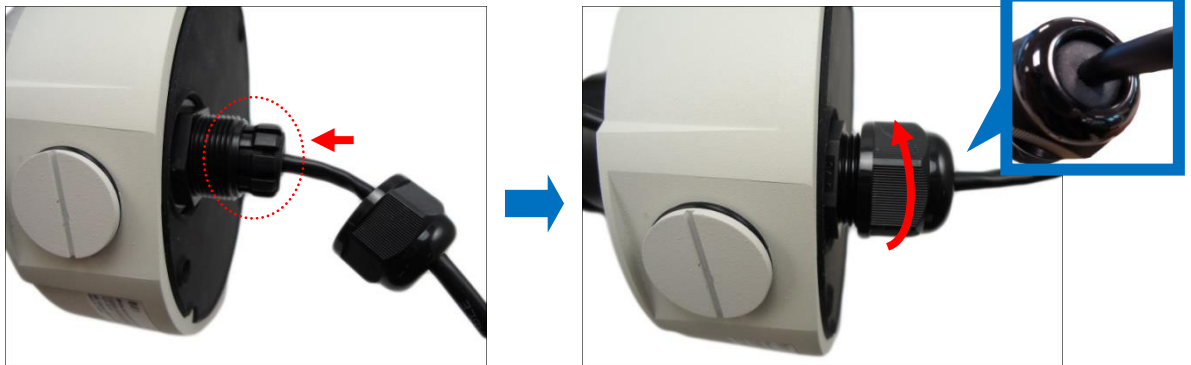


- If the cable will pass through the surface***, pull the network cable through the bottom conduit hole.



Hardware Manual

6. Insert the sealing insert with claw into the cable gland body and then attach the clamping nut to complete the cable solution. Same procedures apply to cable passing the surface or along the surface.



NOTE: Make sure the clamping nut is tightly attached to the cable gland body and the sealing insert is squeezed tightly.

7. Connect the network cable to the Ethernet port of the camera.



8. In case a memory card will be used for local recording, see [How to Insert the Memory Card](#) on page 37 and follow the procedures to install a memory card. Otherwise, skip this step.
9. Proceed with [Step 4: Install the Camera to the Surface](#) on page 23.

Hardware Manual

Waterproof Solution with Conduit

This section describes the procedures to waterproof the cabling connections using the bundled conduit gland and flexible conduit. This is the recommended solution if an exterior-grade Ethernet cable is not available or when other cables, such as power adapter, DI/DO devices, etc., will be connected to the camera.

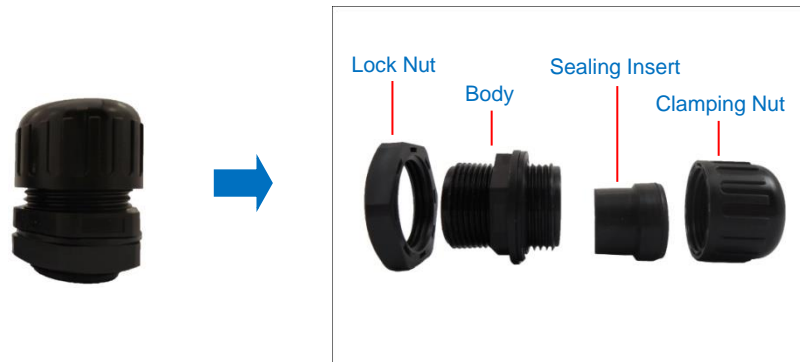
If other connectors will be connected or a memory card will be installed, the camera module must be removed from the housing first. See [How to Remove the Camera Module](#) on page 31.

1. Prepare the following materials for waterproof installation:

Conduit Gland (included in the camera package)	Flexible Conduit 1/2" Trade size (not included in the package)
 <p data-bbox="320 1108 708 1137">For use with 1/2" flexible conduit</p>	
Network Cable CAT 5 or CAT 6 (not included in the package)	
	

Hardware Manual

2. Disassemble the bundled conduit gland as shown below:



NOTE: In this installation, the conduit gland body can be securely attached to the mount kit; therefore the use of lock nut is not necessary. Please set the lock nut aside.

3. Pull the network cable through the flex conduit.

If connecting other input/output devices or an external power adapter, pull the cables through the flex conduit without connectors. The terminal blocks will be attached once the cables pass through the camera hole later.

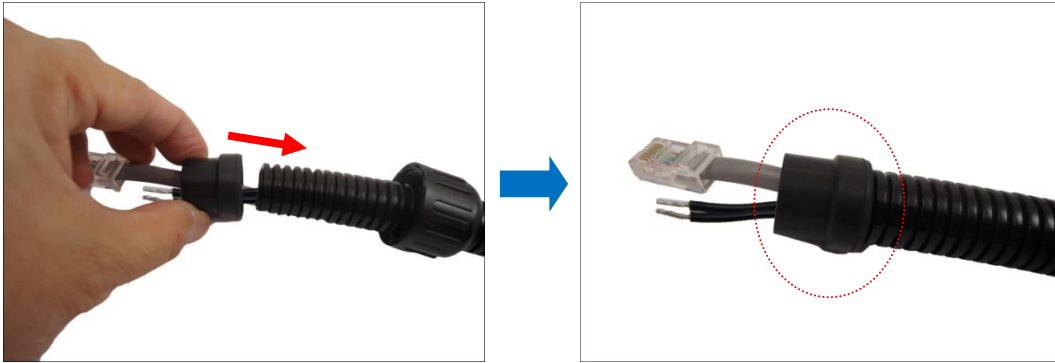


4. Insert the clamping nut through the flex conduit.



Hardware Manual

5. Insert the sealing insert and attach it at the end of the flex conduit.



6. Screw the conduit gland body to the conduit hole of the camera.



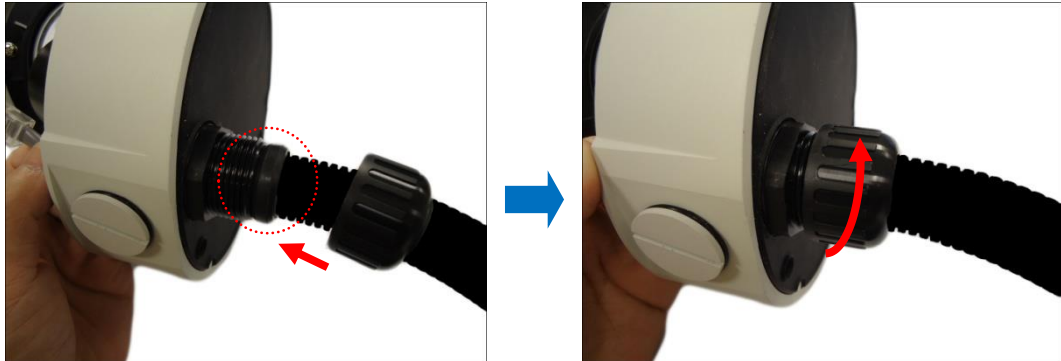
7. ***If the cable(s) will be routed along the surface, skip this step. If the cable will pass through the surface, do the following:***

- a. Pull the network cable through the bottom conduit hole.



Hardware Manual

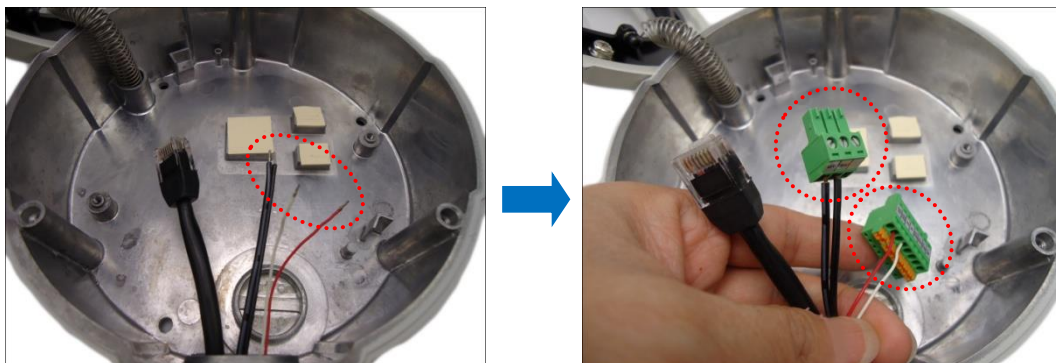
- b. Insert the sealing nut into the conduit gland body and then attach the clamping nut as tightly as possible to complete the cable solution.



8. ***If only the network cable will be connected,*** connect the network cable to the Ethernet port of the camera at this point. Then, proceed with [Step 4: Install the Camera to the Surface](#) on page 23.

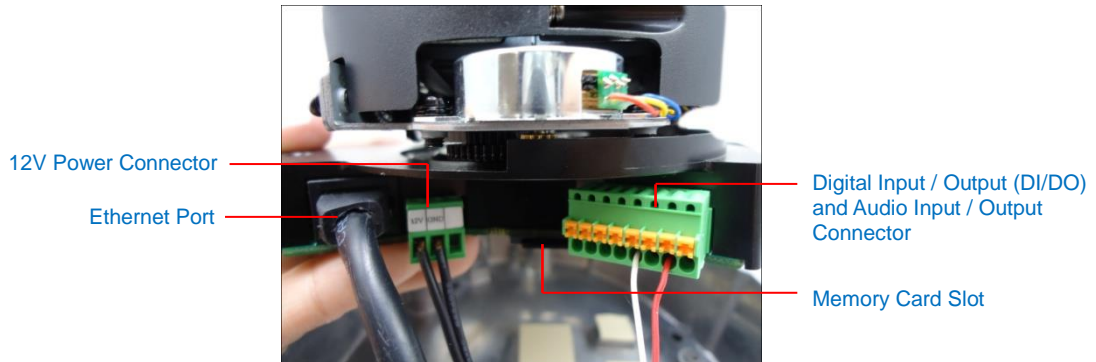


9. If connecting other cables, attach the terminal blocks to the cables. See [Other Connections](#) on page 25.

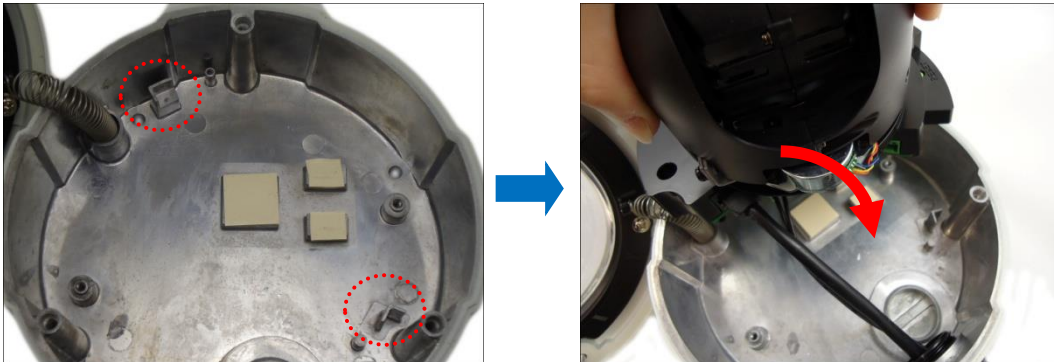


Hardware Manual

10. Connect the network cable to the Ethernet port and other cables (if any) to the corresponding connectors on the camera. If necessary, install also the memory card at this point.



11. Align the camera module to the guide on the housing.



12. Tighten the three (3) screws to secure the camera module to the housing.



13. Proceed with [Step 4: Install the Camera to the Surface](#) on page 23.

Step 4: Install the Camera to the Surface

Align the camera screw holes and the cable hole (if necessary) to the holes on the surface and attach the three (3) supplied screws (with rubber) to secure the camera.



⚠ CAUTION: *When using electric screwdrivers*, be careful not to touch the internal camera components while attaching the screws. Since electric screwdrivers vary in sizes, speed, and force, they may bruise and damage the internal camera components.

DISCLAIMER: The manufacturer will not be responsible for camera damage caused by improper installations or the misuse of equipment for installation.

Step 5: Close the Dome Cover

1. Tighten the three (3) screws to attach the dome cover to the camera body.



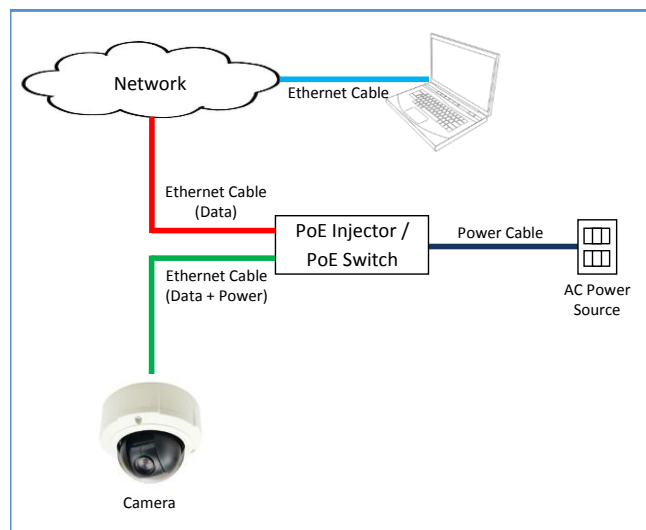
Hardware Manual

- Remove the plastic covering the dome cover. Final installation will look like the illustration below.



Step 6: Connect to the Network

Connect the other end of the network cable to a switch or injector. Then, connect the switch or injector to a network or PC and a power source. See Power-over-Ethernet (PoE) example connection diagram below.



In case of using a non-PoE switch, power up the camera using a power adapter (not supplied). As needed, power up the other connected devices.

Step 7: Access the Camera Live View

See [Accessing the Camera](#) on page 38 for more information on how to access the Live View of the camera.

Other Connections

This section describes the procedures in preparing the external devices that you can connect to the camera. The camera supports DC12V power input, Digital Input and Output (DI/DO) and Audio Input and Output devices using the bundled terminal blocks. The use of these devices, however, is optional.

Connecting a Power Adapter (Optional)

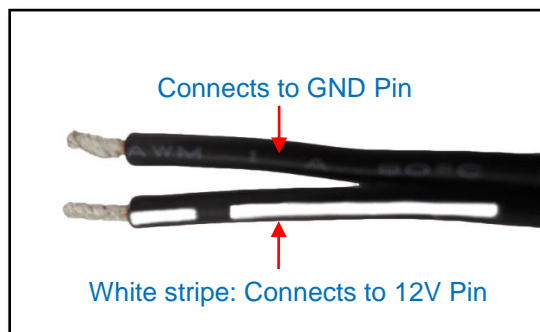
In case of using a non-PoE switch or your PoE switch has limited power supply, you can purchase a power adapter and directly connect the camera to a power outlet. The power adapter must be connected to the supplied terminal block before use.

To do this, follow the procedures below:

1. Loosen the screws of the **12V** and **GND** pins of the power terminal block.

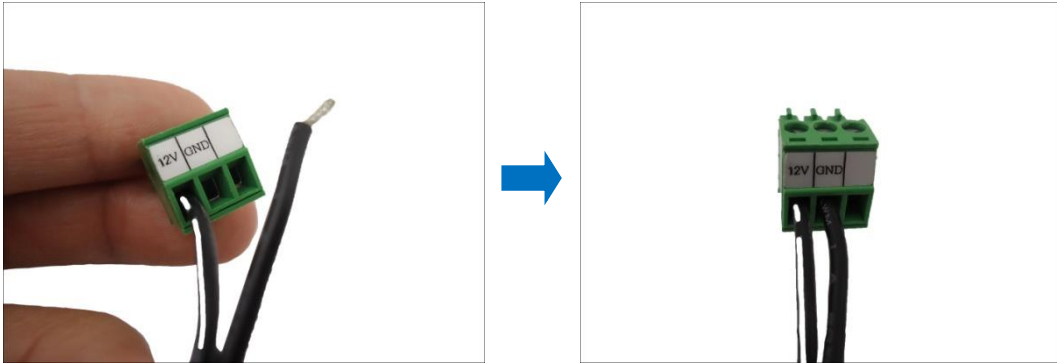


2. Take note that a standard power adapter cable has two (2) different wires:



Hardware Manual

3. Connect the wire with the white stripe to the **12V** pin and the other to the **GND** pin.



4. Tighten the screws of the **12V** pin and the **GND** pins to secure the wire connection.



5. Set the prepared power adapter for connection later. Below is an example of a power adapter with an attached terminal block.



NOTE: The power adapter is not bundled in the package.

Connecting the DI/DO and Audio Devices (Optional)

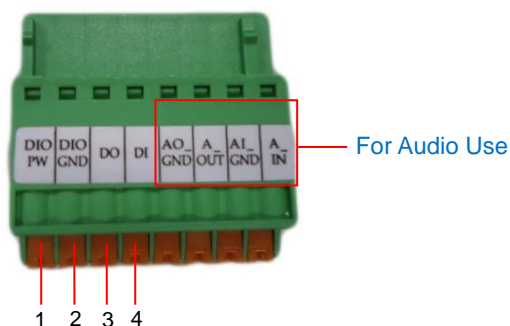
Depending on your surveillance needs, you may connect digital input or output or audio input / output devices to your camera. The camera comes with one (1) terminal block for both digital and audio input / output devices.

How to Connect DI/DO Devices

Digital Input (DI) devices can be used to notify the camera about an activity in the camera site. DI can be triggers of events. For example, you can connect a “panic button” to the camera; as such when the panic button is pressed, the alarm signal will be sent through the camera. Other common DI device applications are emergency button, smoke detector, passive infrared sensor, etc.

Digital Output (DO) devices are external devices that are activated by the camera upon an event inside the camera. For example, you can connect an “alarm horn” to the camera; as such when an event occurs inside the camera (e.g. detected intruder), the alarm horn will sound. Other common DO device applications are motion-triggered lights, electric fence, magnetic door locks, etc.

Press and hold the orange tab as you insert the wire through the pin slot, then release the orange tab to secure the wire.



To connect digital input / output devices (DI/DO), map the pins to one of the pin combinations below:

Device	Pin		Mapping Instructions
Digital Output (DO)	1	DIO PW	Connect the wires of the output device to DIO PW (Pin 1) and DO (Pin 3).
	3	DO	
Digital Input (DI)	2	DIO GND	Connect the wires of the input device to DIO GND (Pin 2) and DI (Pin 4).
	4	DI	

Hardware Manual

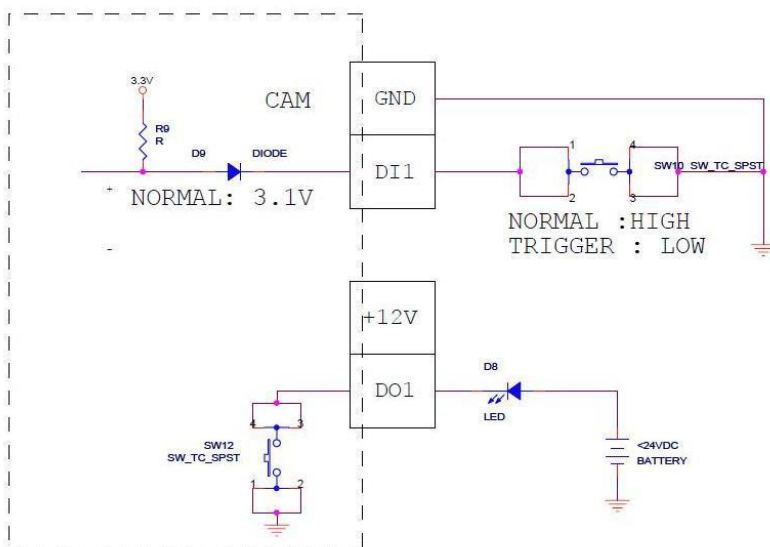
The table below shows the DI/DO connection specifications:

Device			
DI	Connection design		TTL - compatible logic levels
	Voltage	To trigger (low)	Logic level 0: 0V ~ 0.4V
		Normal (high)	Logic level 1: 3.1V ~ 30V
	Current		10mA ~ 100mA
DO	Connection design		Transistor (Open Collector)
	Voltage & Current		< 24V DC, < 50mA

Typical Connection

Based on these specifications, if the DI device has a voltage of 0V ~ 30V or the DO device has a voltage of < 24V (< 50mA), then the camera can supply internal power to these devices and there is no need to connect the DI/DO device to an external power source.

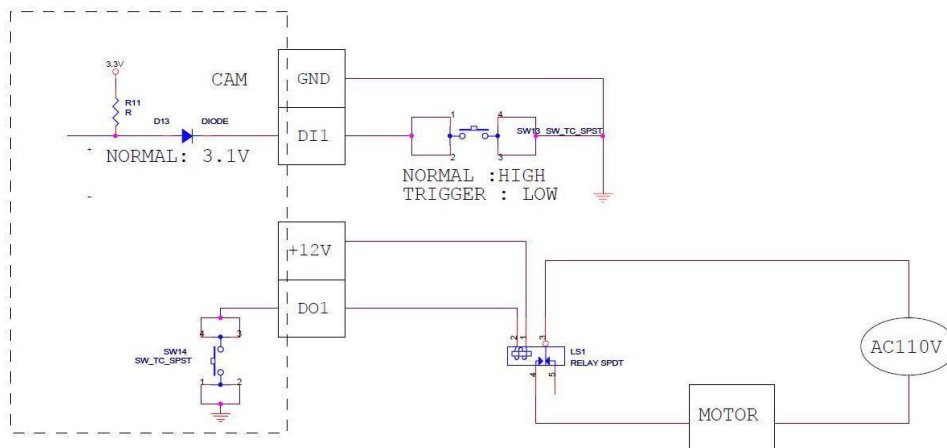
In this case, wire connection to Pins 1 to 4. Use the **DIO GND** and **DI** pins to connect a DI device and use the **DIO PW** and **DO** pins to connect a DO device. See wiring scheme below:



Hardware Manual

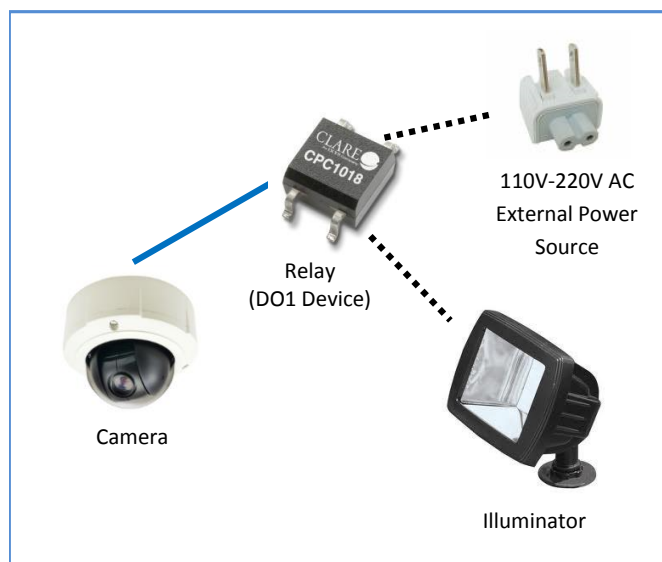
High Voltage DO Device Connection

Even though the camera provides 12V power, this may not be enough for some high voltage DO devices, such as a ceiling light or a motor that opens or closes a gate. In this case, there is a need to connect an external relay. See wiring scheme below:



Note that when choosing an appropriate relay, please refer to its specifications and make sure they match the above design. The triggering circuit voltage has to be around 12V DC and the switch-controlled circuit voltage has to match the external power supply (e.g. 110V AC or 220V AC).

The illustration below is a graphic example of connecting a relay to a high voltage DO device.



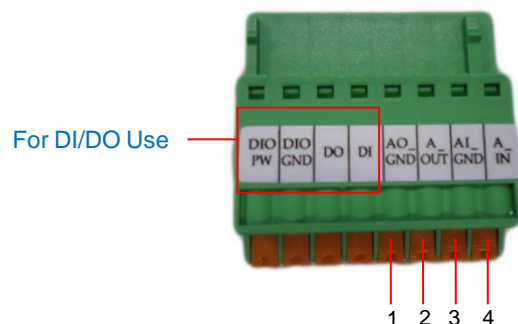
NOTE: For more information on DI/DO connections, please refer to the Knowledge Base article on our website.

Hardware Manual

How to Connect Audio Devices

Audio input / output devices, such as an active microphone or speaker can be connected to the camera using the supplied terminal block.

Press and hold the orange tab as you insert the wire through the pin slot, then release the orange tab to secure the wire.



To connect audio devices, map the pins to one of the pin combinations below:

Device	Pin		Mapping Instructions
Audio Output (AO)	1	AO_GND	Connect the wires of the audio output device to AO_GND (Pin 1) and A_OUT (Pin 2).
	2	A_OUT	
Audio Input (A1)	3	AI_GND	Connect the wires of the audio input device to AI_GND (Pin 3) and A_IN (Pin 4).
	4	A_IN	

NOTE: For more information about AUDIO in connections, please refer to the Knowledge Base article on our website.

Other Adjustments and Accessories

How to Remove / Install the Camera Module

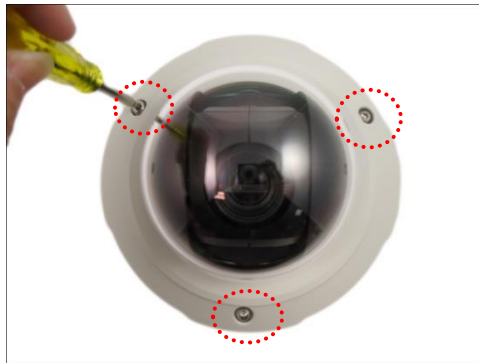
How to Remove the Camera Module

The camera module must be removed from the housing in the following situations:

- To install a memory card
- To connect a digital input / output device
- To connect an audio input / output device

Perform the steps below to remove the camera module from the housing.

1. Using the bundled hex screwdriver, loosen the three (3) screws to open the dome cover.



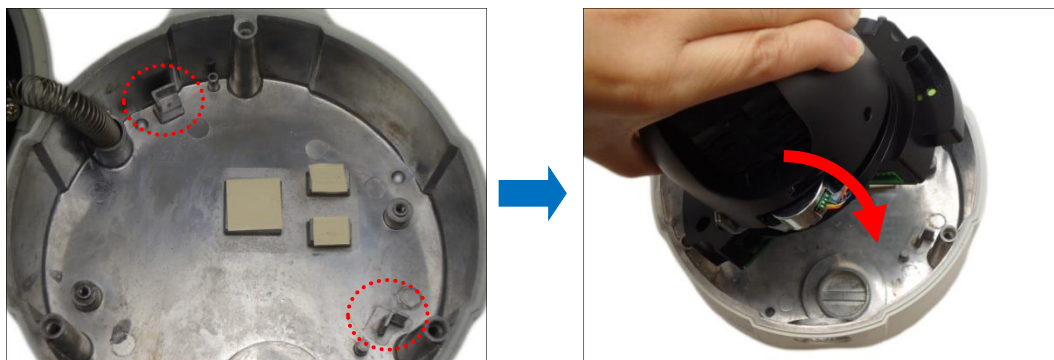
2. Using a standard Phillips screwdriver, loosen the three (3) screws securing the camera module.



3. Lift to remove the camera module from the housing.

How to Install the Camera Module

1. Align the camera module to the guides on the housing.



2. Tighten the three (3) screws to secure the camera module to the housing.

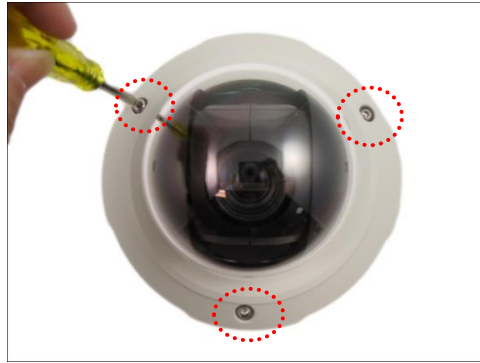


3. Close the dome cover.

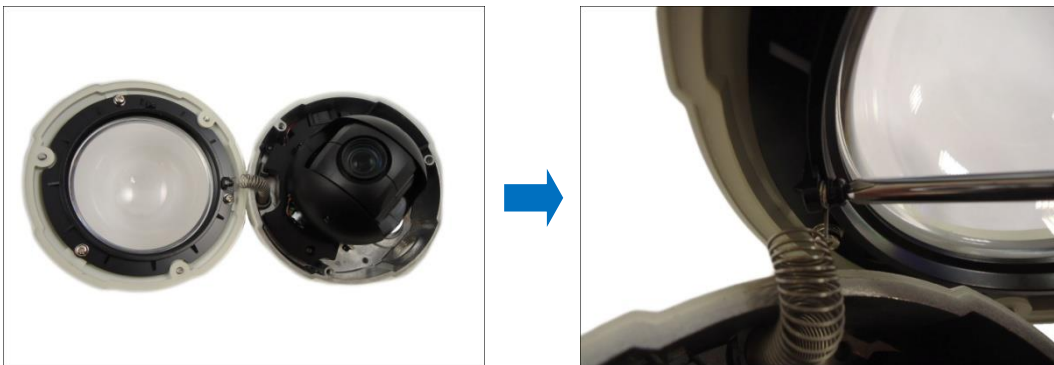
How to Replace the Dome Cover

For more discrete surveillance needs, the bundled dome cover can be replaced with a smoke, vandal proof cover available for purchase. To replace the dome cover, do the following:

1. Loosen the three (3) screws to open the dome cover.

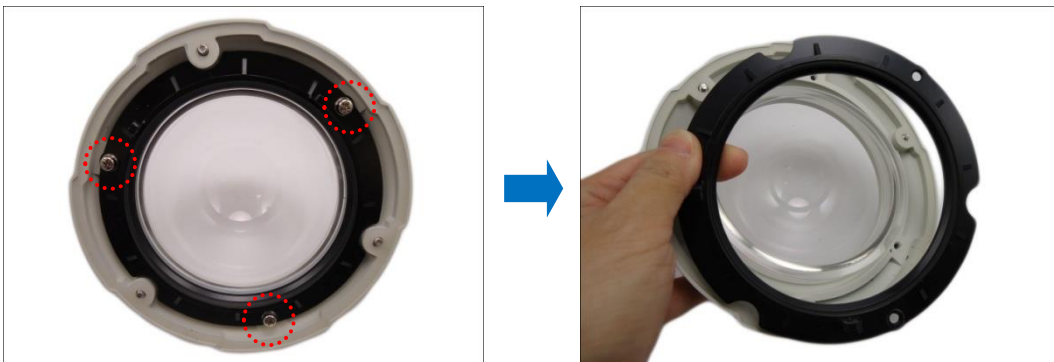


2. Using a screwdriver, remove the screw securing the spring wire to the dome cover.



NOTE: Hold the spring wire as the screw is being removed to avoid the sudden release of the screw and cause it to fly in the air.

3. Remove the three (3) screws to detach the cover bracket.



Hardware Manual

4. Remove dome cover from the cover housing.



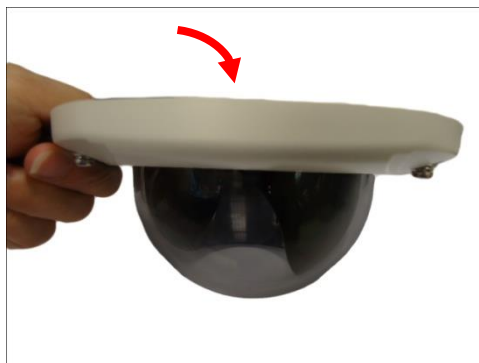
5. Remove the rubber from the dome cover.



6. Insert the rubber into the replacement dome cover.

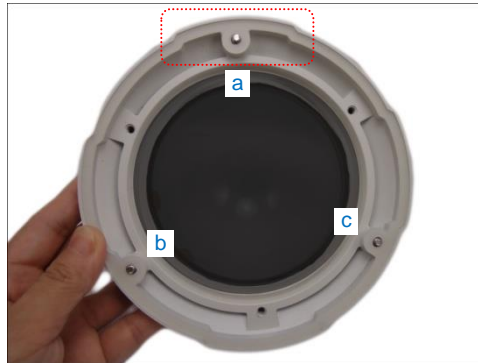


7. Insert the replacement dome cover into the cover housing.



Hardware Manual

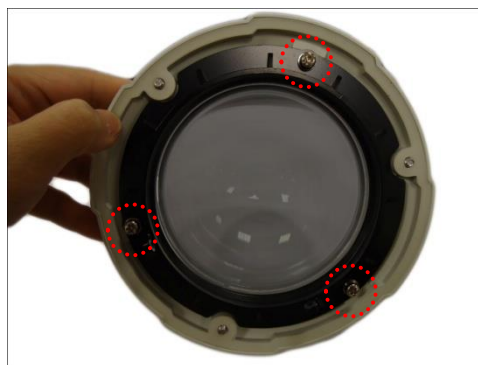
- There are 3 indents on the cover housing; note the indent (a) which is on the center of the extended curve of the cover.



Place the bracket on the cover housing with the arrow on the bracket aligned to the indent (a).

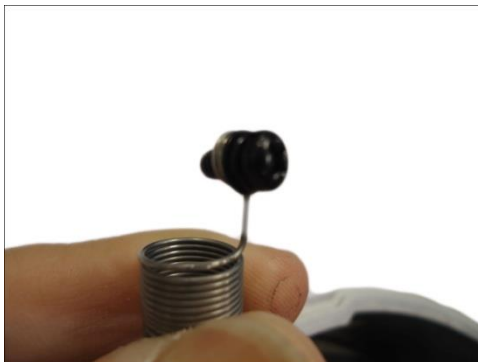


- Attach the three (3) screws to secure the bracket to the cover housing.

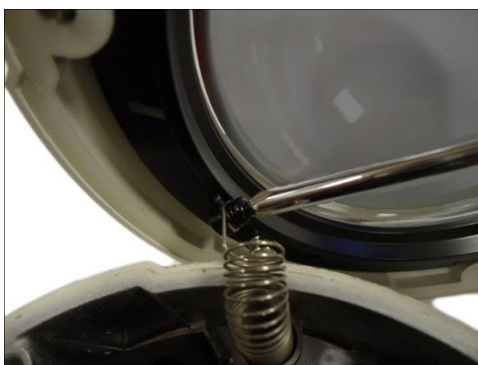


Hardware Manual

10. Fit the screw into the spring wire that is attached to the camera. Note the screw placement as shown below.



11. There are two (2) screw holes on the bracket, attach the screw to the right screw hole using a screwdriver.



Final installation should look like the illustration below.



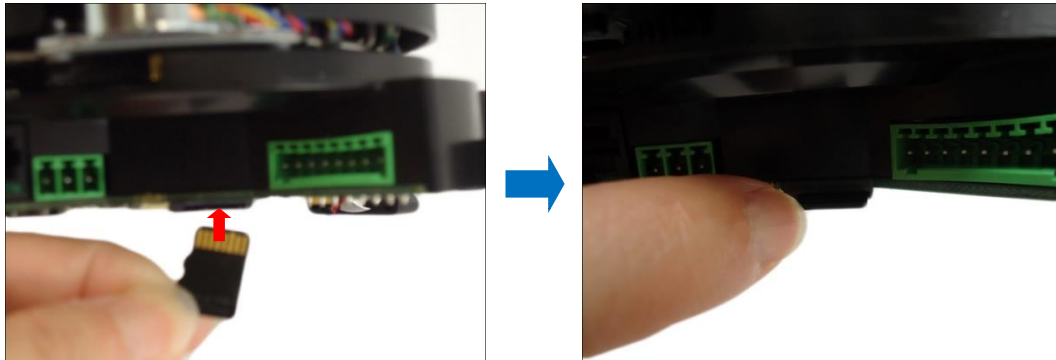
How to Insert / Remove a Memory Card

The camera supports local video recording or saving of snapshots to a memory card.

NOTE: Supports microSDHC and microSDXC cards.

How to Insert the Memory Card

1. Remove the camera module from the housing. See [How to Remove the Camera Module](#) on page 31.
2. Insert a memory card into the card slot with the metallic contacts facing up the camera.



3. Push the card until it clicks into place.

How to Remove the Memory Card

In case there is a need to remove the card, make sure to access the camera Web Configurator to safely “unmount” the card first (see the camera Firmware manual for more information). Once unmounted from the firmware, push the card to eject it from the slot.

Accessing the Camera

Configure the IP Addresses

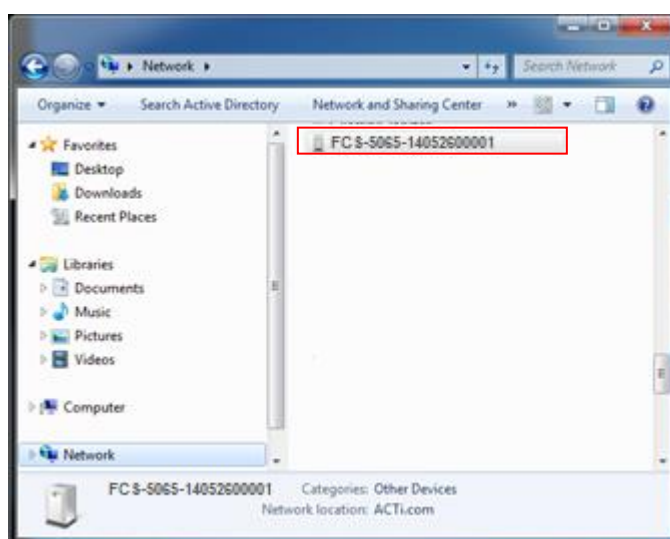
In order to be able to communicate with the camera from your PC, both the camera and the PC have to be within the same network segment. In most cases, it means that they both should have very similar IP addresses, where only the last number of the IP address is different from each other. There are 2 different approaches to IP Address management in Local Area Networks – by DHCP Server or Manually.

Using DHCP server to assign IP addresses:

If you have connected the computer and the camera into the network that has a DHCP server running, then you do not need to configure the IP addresses at all – both the camera and the PC would request a unique IP address from DHCP server automatically. In such case, the camera will immediately be ready for the access from the PC. The user, however, might not know the IP address of the camera yet. It is necessary to know the IP address of the camera in order to be able to access it by using a Web browser.

The quickest way to discover the cameras in the network is to use the simplest network search, built in the Windows system – just by pressing the “Network” icon, all the cameras of the local area network will be discovered by Windows thanks to the UPnP function support of our cameras.

In the example below, we successfully found the camera model that had just connected to the network.



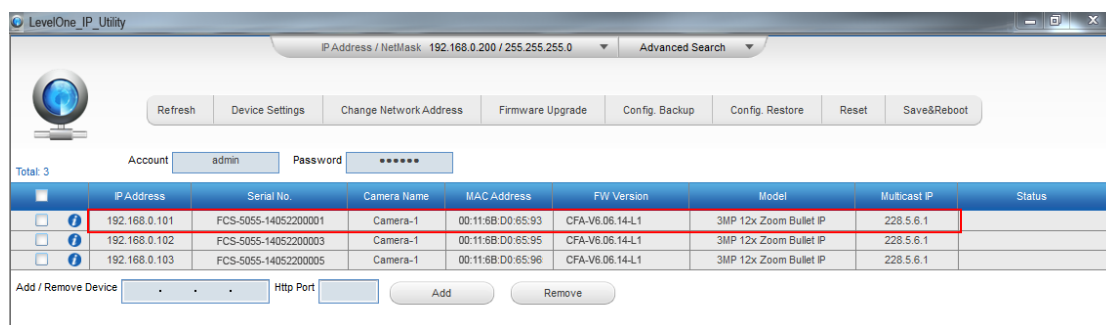
Hardware Manual

Double-click on the camera model name, the default browser of the PC is automatically launched and the IP address of the target camera is already filled in the address bar of the browser.

If you work with our cameras regularly, then **there is even a better way to discover the cameras in the network** – by using **IP Utility**. The IP Utility is a light software tool that can not only discover the cameras, but also list lots of valuable information, such as IP and MAC addresses, serial numbers, firmware versions, etc, and allows quick configuration of multiple devices at the same time.

The IP Utility can be downloaded for free from our website.

With just one click, you can launch the IP Utility and there will be an instant report as follows:



You can quickly notice the camera model in the list. Click on the IP address to automatically launch the default browser of the PC with the IP address of the target camera filled in the address bar of the browser already.

Hardware Manual

Use the default IP address of a camera:

If there is no DHCP server in the given network, the user may have to assign the IP addresses to both PC and camera manually to make sure they are in the same network segment.

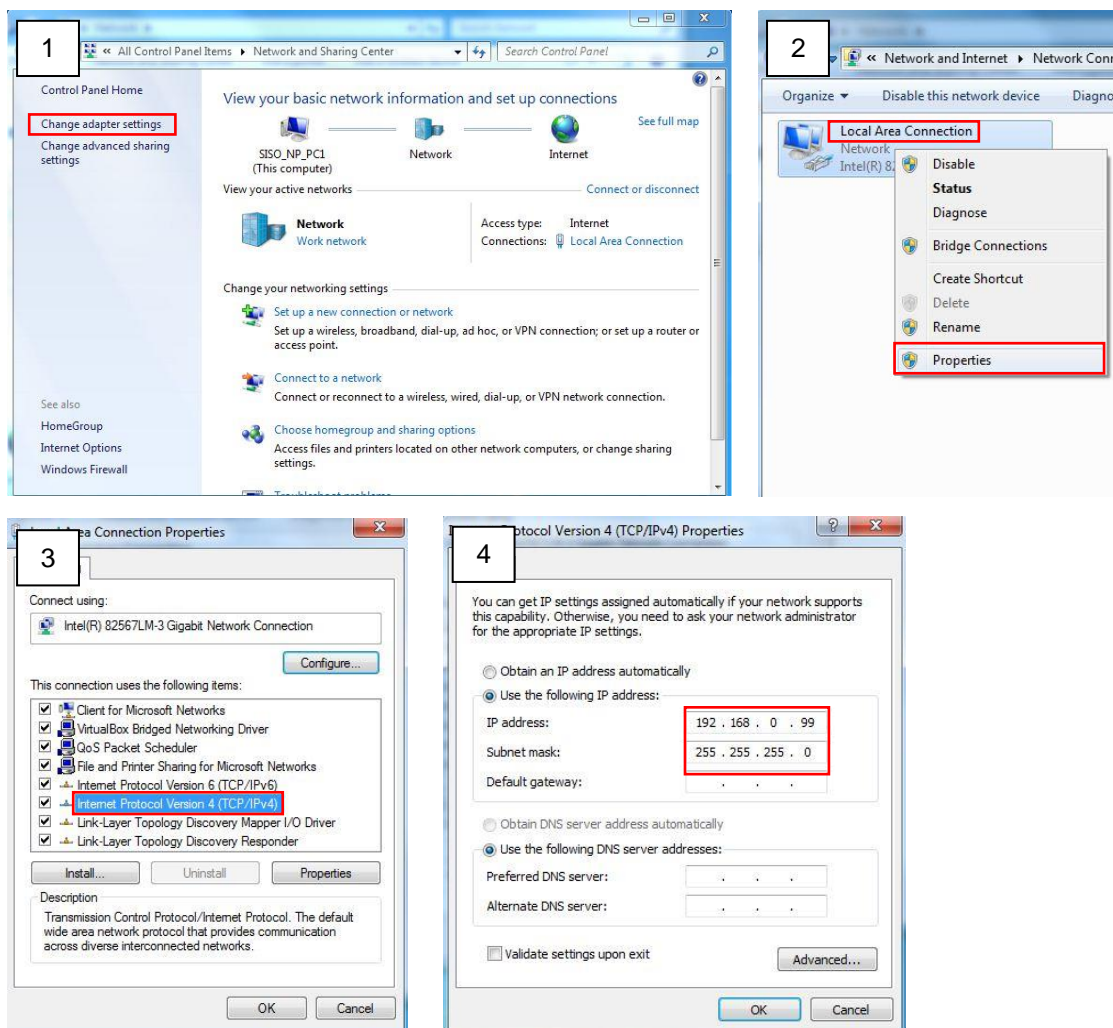
When the camera is plugged into network and it does not detect any DHCP services, it will automatically assign itself a default IP:

192.168.0.100

Whereas the default port number would be **80**. In order to access that camera, the IP address of the PC has to be configured to match the network segment of the camera.

Manually adjust the IP address of the PC:

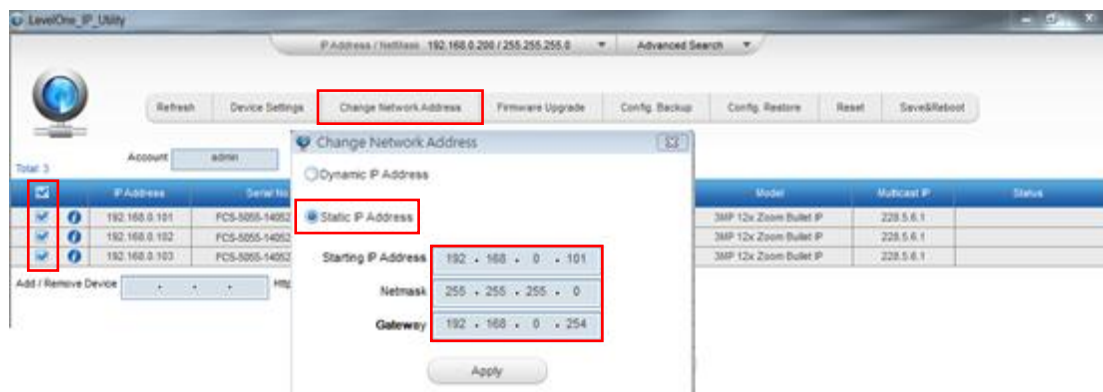
In the following example, based on Windows 7, we will configure the IP address to **192.168.0.99** and set Subnet Mask to **255.255.255.0** by using the steps below:



Hardware Manual

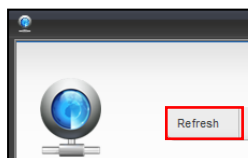
Manually adjust the IP addresses of multiple cameras:

If there are more than 1 camera to be used in the same local area network and there is no DHCP server to assign unique IP addresses to each of them, all of the cameras would then have the initial IP address of **192.168.0.100**, which is not a proper situation for network devices – all the IP addresses have to be different from each other. The easiest way to assign cameras the IP addresses is by using **IP Utility**:



With the procedure shown above, all the cameras will have unique IP addresses, starting from 192.168.0.101. In case there are 20 cameras selected, the last one of the cameras would have the IP 192.168.0.120.

Later, by pressing the “Refresh” button of the IP Utility, you will be able to see the list of cameras with their new IP addresses.



Please note that it is also possible to change the IP addresses manually by using the Web browser. In such case, please plug in only one camera at a time, and change its IP address by using the Web browser before plugging in the next one. This way, the Web browser will not be confused about two devices having the same IP address at the same time.

Access the Camera

Now that the camera and the PC are both having their unique IP addresses and are under the same network segment, it is possible to use the Web browser of the PC to access the camera.

You can use **any of the browsers** to access the camera, however, the full functionality is provided only for **Microsoft Internet Explorer**.

The browser functionality comparison:

Functionality	Internet Explorer	Other browsers
Live Video	Yes	Yes*
Live Video Area Resizable	Yes	No
PTZ Control	Yes	Yes
Capture the snapshot	Yes	Yes
Video overlay based configuration (Motion Detection regions, Privacy Mask regions)	Yes	No
All the other configurations	Yes	Yes

* **QuickTime** (<http://www.apple.com/quicktime/download/>) has to be installed in PC first before using any non-Internet Explorer browsers to be able to get live video feed from the camera with those browsers. It is a free and open source cross-platform multimedia player.

***Disclaimer Notice:** The camera manufacturer does not guarantee the compatibility of its cameras with QuickTime – since it is a third party software, the third party has the right to modify their utility any time which might affect the compatibility. In such cases, please use Internet Explorer browser instead.*

When using Internet Explorer browser, the ActiveX control for video stream management will be downloaded from the camera directly – the user just has to accept the use of such control when prompted so. No other third party utilities are required to be installed in such case.

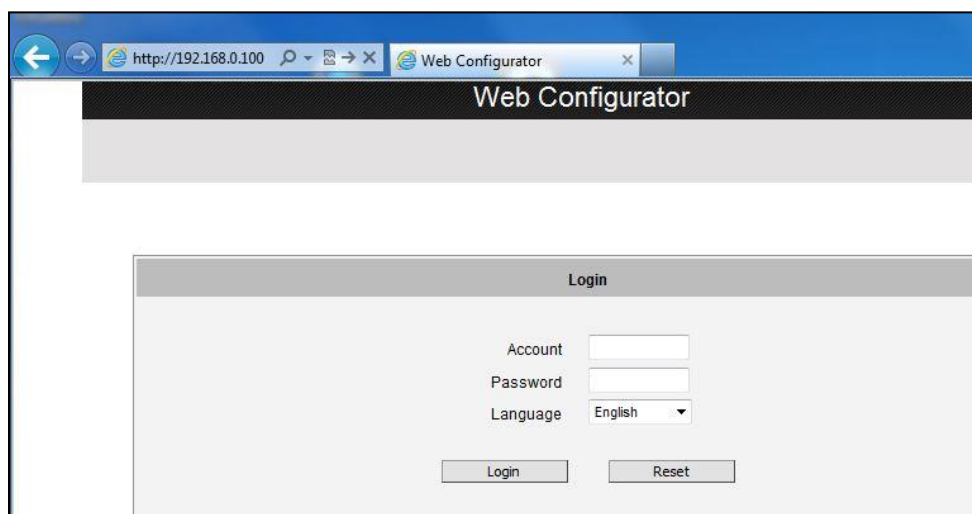
The examples in this manual are based on Internet Explorer browser in order to cover all functions of the camera.

Hardware Manual

Assuming that the camera's IP address is **192.168.0.100**, you can access it by opening the Web browser and typing the following address into Web browser's address bar:

http://192.168.0.100

Upon successful connection to the camera, the user interface called **Web Configurator** would appear together with the login page. The HTTP port number was not added behind the IP address since the default HTTP port of the camera is 80, which can be omitted from the address for convenience.



Before logging in, you need to know the factory default Account and Password of the camera.

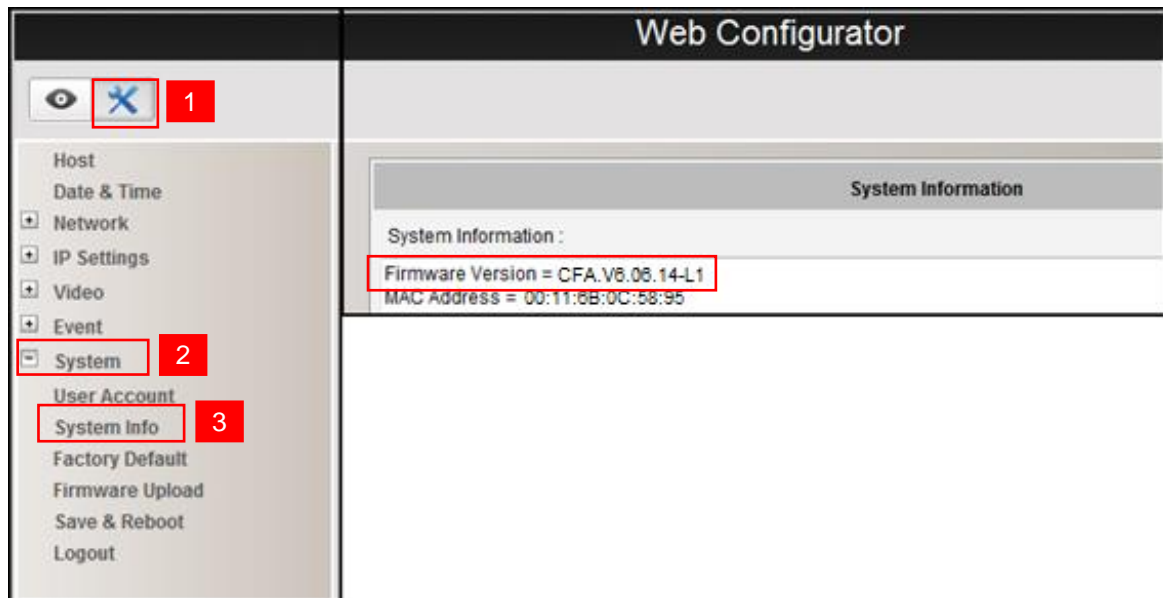
Account: **Admin**

Password: **123456**

For further operations, please refer to the **Firmware User Manual**.

Hardware Manual

To check the firmware version through the Web Configurator, access the **Setup** page and click **System > System Info**.



For further operations, please refer to the **Firmware User Manual**.