



LevelOne

GSW-4875

**48-Port Gigabit w/4 miniGBIC(share)
Web Smart Switch**

User's Guide

FCC Warning

This equipment has been tested and found to comply with the regulations for a Class A digital device, pursuant to Part 15 of the FCC Rules. These limits are designed to provide reasonable protection against harmful interference when the equipment is operated in a commercial environment. This equipment generates, uses, and can radiate radio frequency energy and, if not installed and used in accordance with this user's guide, may cause harmful interference to radio communications. Operation of this equipment in a residential area is likely to cause harmful interference, in which case the user will be required to correct the interference at his or her own expense.

CE Mark Warning

This is a Class A product. In a domestic environment, this product may cause radio interference, in which case the user may be required to take adequate measures.

VCCI Warning

This is a product of VCCI Class A Compliance.

注意

この装置は、情報処理装置等電波障害自主規制協議会(VCCI)の基準に基づく第一種情報技術装置です。この装置を家庭環境で使用すると電波妨害を引き起こすことがあります。この場合には使用者が適切な対策を講ずるよう要求されることがあります。

UL Warning

a) Elevated Operating Ambient Temperature- If installed in a closed or multi-unit rack assembly, the operating ambient temperature of the rack environment may be greater than room ambient. Therefore, consideration should be given to installing the equipment in an environment compatible with the manufacturer's maximum rated ambient temperature (T_{mra}).

b) Reduced Air Flow- Installation of the equipment in a rack should be such that the amount of air flow required for safe operation of the equipment is not compromised.

c) Mechanical Loading- mounting of the equipment in the rack should be such that a hazardous condition is not achieved due to uneven mechanical loading.

d) Circuit Overloading- Consideration should be given to the connection of the equipment to the supply circuit and the effect that overloading of circuits might have on over current protection and supply wiring. Appropriate consideration of equipment nameplate ratings should be used when addressing this concern.

e) Reliable Earthing- Reliable earthing of rack-mounted equipment should be maintained. Particular attention should be given to supply connections other than direct connections to the branch circuit (e.g., use of power strips).



TABLE OF CONTENT

About This Guide.....	1
Purpose	1
Terms/Usage	1
Introduction.....	3
Gigabit Ethernet Technology	3
Fast Ethernet Technology	4
Switching Technology	5
VLAN (Virtual Local Area Network).....	6
Features.....	6
Unpacking and Installation	9
Unpacking.....	9
Installation	10
Rack Mounting	11
Connecting Network Cable.....	12
AC Power.....	12
Identifying External Components	13
Front Panel.....	13
Rear Panel.....	14
Understanding LED Indicators	15
Power and System LEDs	15
Ports 1~48 Status LEDs	16
mini-GBIC 45F~48F Status LEDs.....	16
Configuration.....	17

Installing the Web Management Utility	17
Discovery List	18
Monitor List	19
Device Setting	21
Toolbar	22
Configuring the Switch	23
Login	24
Setup Menu	25
Configuring Setup Setting	26
Port Settings	26
VLAN Settings (IEEE 802.1Q VLAN)	28
Trunk Setting	32
Mirror Setting	33
Device Status	34
Statistic	35
System Setting	36
Trap Setting	37
Password Setting	38
Backup Setting	38
Reset Setting	39
Logout	39
Technical Specifications	41

ABOUT THIS GUIDE

Congratulations on your purchase of LevelOne GSW-4875, 48-Port 10/100/1000Mbps Gigabit Ethernet Web Smart Switch. This device integrates 1000Mbps Gigabit Ethernet, 100Mbps Fast Ethernet and 10Mbps Ethernet network capabilities in a highly flexible package.

Purpose

This guide discusses how to install your GSW-4875, 48-Port 10/100/1000Mbps Gigabit Ethernet Web Smart Switch.

Terms/Usage

In this guide, the term “Switch” (first letter upper case) refers to your GSW-4875, and “switch” (first letter lower case) refers to other Ethernet switches.

INTRODUCTION

This chapter describes the features of GSW-4875 and some background information about Ethernet/Fast Ethernet/Gigabit Ethernet switching technology.

Gigabit Ethernet Technology

Gigabit Ethernet is an extension of IEEE 802.3 Ethernet utilizing the same packet structure, format, and support for CSMA/CD protocol, full duplex, flow control, and management objects, but with a tenfold increase in theoretical throughput over 100-Mbps Fast Ethernet and a hundredfold increase over 10-Mbps Ethernet. Since it is compatible with all 10-Mbps and 100-Mbps Ethernet environments, Gigabit Ethernet provides a straightforward upgrade without wasting a company's existing investment in hardware, software, and trained personnel.

The increased speed and extra bandwidth offered by Gigabit Ethernet is essential to coping with the network bottlenecks that frequently develop as computers and their busses get faster and more users use applications that generate more traffic. Upgrading key components, such as your backbone and servers to Gigabit Ethernet can greatly improve network response times as well as significantly speed up the traffic between your subnets.

Gigabit Ethernet enables fast optical fiber connections to support video conferencing, complex imaging, and similar data-intensive applications. Likewise, since data transfers occur 10 times faster than Fast Ethernet, servers outfitted with Gigabit Ethernet NIC's are able to perform 10 times the number of operations in the same amount of time.

In addition, the phenomenal bandwidth delivered by Gigabit Ethernet is the most cost-effective method to take advantage of today and tomorrow's rapidly improving switching and routing internetworking technologies. And with expected advances in the coming years in silicon technology and digital signal processing that will enable Gigabit Ethernet to eventually operate over unshielded twisted-pair (UTP) cabling, outfitting your network with a powerful 1000-Mbps-capable backbone/server connection creates a flexible foundation for the next generation of network technology products.

Fast Ethernet Technology

The growing importance of LANs and the increasing complexity of desktop computing applications are fueling the need for high performance networks. A number of high-speed LAN technologies have been proposed to provide greater bandwidth and improve client/server response times. Among them, 100BASE-T (Fast Ethernet) provides a non-disruptive, smooth evolution from the current 10BASE-T technology. The non-disruptive and smooth evolution nature, and the dominating potential market base, virtually guarantees cost-effective and high performance Fast Ethernet solutions.

100Mbps Fast Ethernet is a standard specified by the IEEE 802.3 LAN committee. It is an extension of the 10Mbps Ethernet standard with the ability to transmit and receive data at 100Mbps, while maintaining the CSMA/CD Ethernet protocol. Since the 100Mbps Fast Ethernet is compatible with all other 10Mbps Ethernet environments, it provides a straightforward upgrade and takes advantage of the existing investment in hardware, software, and personnel training.

Switching Technology

Another approach to pushing beyond the limits of Ethernet technology is the development of switching technology. A switch bridges Ethernet packets at the MAC address level of the Ethernet protocol transmitting among connected Ethernet or Fast Ethernet LAN segments.

Switching is a cost-effective way of increasing the total network capacity available to users on a local area network. A switch increases capacity and decreases network loading by dividing a local area network into different segments, which don't compete with each other for network transmission capacity.

The switch acts as a high-speed selective bridge between the individual segments. The switch, without interfering with any other segments, automatically forwards traffic that needs to go from one segment to another. By doing this the total network capacity is multiplied, while still maintaining the same network cabling and adapter cards.

Switching LAN technology is a marked improvement over the previous generation of network bridges, which were characterized by higher latencies. Routers have also been used to segment local area networks, but the cost of a router, the setup and maintenance required make routers relatively impractical. Today switches are an ideal solution to most kinds of local area network congestion problems.

VLAN (Virtual Local Area Network)

A VLAN is a group of end-stations that are not constrained by their physical location and can communicate as if a common broadcast domain, a LAN. The primary utility of using VLAN is to reduce latency and need for routers, using faster switching instead. Other VLAN utility includes:

Security, Security is increased with the reduction of opportunity in eavesdropping on a broadcast network because data will be switched to only those confidential users within the VLAN.

Cost Reduction, VLANs can be used to create multiple broadcast domains, thus eliminating the need of expensive routers.

Features

- ◆ 48×10/100/1000Mbps 1000BASE-T Auto-negotiation Gigabit Ethernet ports
- ◆ 4 x 1000Mbps mini-GBIC (Auto-Sense) for optional mini-GBIC transceiver to extend distance, share with 4 1000BASE-T ports
- ◆ All RJ45 ports support auto MDI/MDIX, so there is no need to use cross-over cables or an up-link port
- ◆ Half duplex transfer mode for connection speed 10Mbps and 100Mbps
- ◆ Full duplex transfer mode for connection speed of 10Mbps, 100Mbps and 1000Mbps
- ◆ Store-and-Forward switching scheme capability to support rate adaptation and ensure data integrity
- ◆ Up to 8K unicast addresses entities per device, self-learning, and table aging

- ◆ 1632KBytes packet buffer
- ◆ Supports IEEE 802.3x flow control for full-duplex mode ports
- ◆ Supports IEEE 802.1Q VLAN
- ◆ Supports Port-base QoS
- ◆ Supports ten Trunk groups.
- ◆ Supports Port-mirroring
- ◆ Supports Port-setting for Speed/Disable, Flow control
- ◆ Easy configuration via WEB Browser
- ◆ Easy setting via Web Management Utility
- ◆ Standard 19” Rack-mount size

UNPACKING AND INSTALLATION

This chapter provides unpacking and installation information for GSW-4875.

Unpacking

Open the shipping cartons of the Switch and carefully unpacks its contents. The carton should contain the following items:

- ◆ One GSW-4875 Gigabit Ethernet Web Smart Switch
- ◆ One AC power cord, suitable for your area's electrical power connections
- ◆ Four rubber feet to be used for shock cushioning
- ◆ Screws and two mounting brackets
- ◆ CD-Rom with Web Management Utility and User's Guide

If any item is found missing or damaged, please contact your local reseller for replacement.

Installation

The site where you install the hub stack may greatly affect its performance. When installing, consider the following pointers:

Install the Switch in a fairly cool and dry place. See *Technical Specifications* for the acceptable temperature and humidity operating ranges.

Install the Switch in a site free from strong electromagnetic field generators (such as motors), vibration, dust, and direct exposure to sunlight.

Leave at least 10cm of space at the front and rear of the hub for ventilation.

Install the Switch on a sturdy, level surface that can support its weight, or in an EIA standard-size equipment rack. For information on rack installation, see the next section, Rack Mounting.

When installing the Switch on a level surface, attach the rubber feet to the bottom of each device. The rubber feet cushion the hub and protect the hub case from scratching.

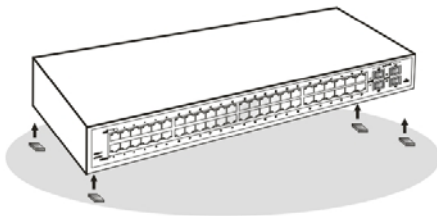


Figure 1. Attach the adhesive rubber pads to the bottom

Rack Mounting

The switch can be mounted in an EIA standard-size, 19-inch rack, which can be placed in a wiring closet with other equipment. Attach the mounting brackets at the switch's front panel (one on each side), and secure them with the provided screws.

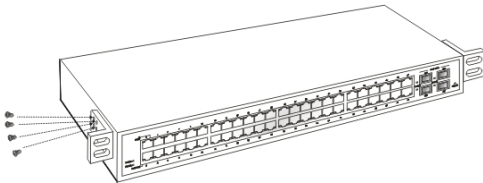


Figure 2. Combine the Switch with the provided screws

Then, use screws provided with the equipment rack to mount each switch in the rack.

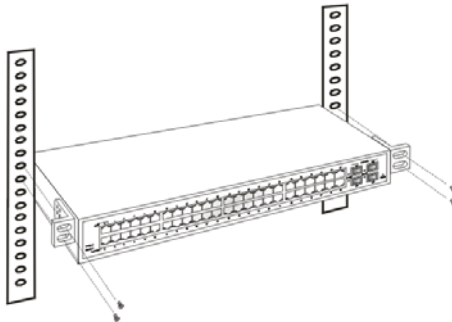


Figure 3. Mount the Switch in the rack

Connecting Network Cable

GSW-4875 supports 1000Mbps Gigabit Ethernet that runs in Auto-negotiation mode and 10Mbps Ethernet or 100Mbps Fast Ethernet that runs both in half and full duplex mode and 1000Mbps Gigabit Ethernet runs in full duplex mode using four pair of Category 5 Cable.

These RJ-45 ports are Auto-MDI type port. The Switch can auto transform to MDI-II or MDI-X type, so you can just make an easy connection that without worrying if you are using a standard or crossover RJ45 cable.

There are additional 4 ports mini-GBIC slot for optional mini-GBIC module.

AC Power

The Switch used the AC power supply 100-240V AC, 50-60 Hz. The power switch is located at the rear of the unit adjacent to the AC power connector and the system fan. The switch's power supply will adjust to the local power source automatically and may be turned on without having any or all LAN segment cables connected.

IDENTIFYING EXTERNAL COMPONENTS

This chapter describes the front panel, rear panel, and LED indicators of GSW-4875.

Front Panel

The figure below shows the front view of GSW-4875.



Figure 4. Front View of 48-port Gigabit Ethernet Switch

LED Indicator:

Comprehensive LED indicators display the status of GSW-4875 and the network (see the LED Indicators chapter below).

1000BASE-T Gigabit Ethernet Ports (Port 1~48):

GSW-4875 embedded with 48 Gigabit twisted pair ports, supported auto negotiable 10/100/1000Mbps and auto MDI/MDIX crossover detection function, this function gives true “plug and play” capability, just need to plug-in the network cable to the hub directly and don’t care if the end node is NIC (Network Interface Card) or switch and hub. These ports can operate in half-duplex mode for 10/100Mbps and full- duplex mode for 10/100/1000Mbps.

Note: When the port was set to “Forced Mode”, the Auto MDI/MDIX will be disabled.

mini-GBIC Ports (Port 45F~48F)

GSW-4875 is equipped with four mini-GBIC ports, supported optional 1000BASE-SX/LX mini-GBIC module.

Port 45, 46, 47 and 48 are the same ports with the mini-GBIC 45F, 46F, 47F and 48F ports, when plug in the mini-GBIC module, the device will activate mini-GBIC, and the RJ45 port will be disabled.

Reset:

The Reset button is to reset all the setting back to the factory default.

Note: Be sure that you recorded the setting of your device, else all the setting will be erased when pressing the “Reset” button.

Rear Panel

The rear panel of the Switch consists of an AC power connector. The following shows the rear panel of the Switch



Figure 5. Rear panel of the Switch

AC Power Connector:

This is a three-pronged connector that supports the power cord. Plug in the female connector of the provided power cord into this connector, and the male into a power outlet. Supported input voltages range from 100-240V AC at 50-60Hz.

UNDERSTANDING LED INDICATORS

The front panel LEDs provides instant status feedback, and, helps monitor and troubleshoot when needed.

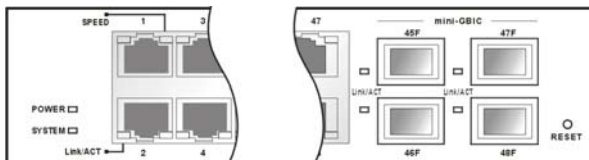


Figure 6. LED indicators of the Switch

Power and System LEDs

POWER: Power Indicator

On	:	When the Power LED lights on, the Switch is receiving power.
Off	:	When the Power turns off or the power cord has improper connection.

System: Management Indicator

Blinking	:	When the CPU is working, the System LED is blinking.
On/Off	:	The CPU is not working.

Ports 1~48 Status LEDs

Link/ACT: Link/Activity(left side of each RJ-45 ports)

On	:	When the Link/ACT LED lights on, the respective port is successfully connected to an Ethernet network.
Blinking	:	When the Link/ACT LED is blinking, the port is transmitting or receiving data on the Ethernet network.
Off	:	No link.

Speed (right side of each RJ-45 ports)

Green	:	When the related port was connected to 1000Mbps Gigabit Ethernet network, the Speed LED will lights green.
Amber	:	When the related port was connected to 100Mbps Fast Ethernet network, the Speed LED will lights amber.
Off	:	When the related port was connected to 10Mbps Ethernet network, the Speed LED will lights off.

mini-GBIC 45F~48F Status LEDs

Link/ACT

On	:	When the LC fiber line connected to the mini-GBIC module is installed and connected to a network, the Link/ACT LED will lights on.
Blinking	:	When the Link/ACT LED is blinking, the port is transmitting or receiving data on the Ethernet network.
Off	:	LC fiber line or mini-GBIC module is not installed.

CONFIGURATION

Through the Web Browser you can configure the Switch such as VLAN, Trunking, QoS... etc.

With the attached Web Management Utility, you can easily discover all the Web Management Switch, assign the IP Address, changing the password and upgrading the new firmware.

Installing the Web Management Utility

The following gives instructions guiding you through the installations of the Web Management utility.

1. Insert the Utility CD in the CD-Rom Drive.
2. From the **Start** menu on the Windows desktop, choose **Run**.
3. In the **Run** dialog box, type D:\Web Management Utility\setup.exe (D:\ depends where your CD-Rom drive is located) and click **OK**.
4. Follow the on-screen instructions to install the utility.
5. Upon completion, go to **Program Files** -> **web_management_utility** and execute the Web Management utility. (Figure 7.)

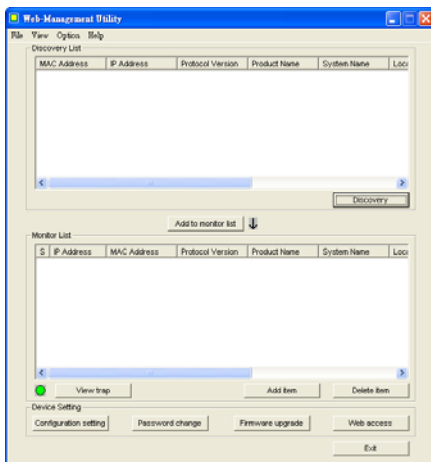


Figure 7. Web Management Utility

The Web Management Utility was divided into four parts, **Discovery List**, **Monitor List**, **Device Setting** and **Toolbar function**, for details instruction, follow the below section.

Discovery List

This is the list where you can discover all the Web management devices in the entire network.

By pressing the **“Discovery”** button, you can list all the Web Management devices in the discovery list.

Double click or press the **“Add to monitor list”** button to select a device from the Discovery List to the Monitor List.


System word definitions in the Discovery List:

- **MAC Address:** Shows the device MAC Address.
 - **IP Address:** Shows the current IP address of the device.
 - **Protocol version:** Shows the version of the Utility protocol.
 - **Product Name:** Shows the device product name.
 - **System Name:** Shows the appointed device system name.
 - **Location:** Shows where the device is located.
 - **Trap IP:** Shows the IP where the Trap to be sent.
 - **Subnet Mask:** Shows the Subnet Mask set of the device.
 - **Gateway:** Shows the Gateway set of the device.
-

Monitor List

All the Web Smart Device in the Monitor List can be monitored; you can also receive the trap and show the status of the device.

System word definitions in the Monitor List:

- **S:** Shows the system symbol of the Web-Smart device,  represent for device system is not alive.
 - **IP Address:** Shows the current IP address of the device.
 - **MAC Address:** Shows the device MAC Address.
 - **Protocol version:** Shows the version of the Utility protocol.
 - **Product Name:** Shows the device product name.
 - **System Name:** Shows the appointed device system name.
 - **Location:** Shows where the device is located.
 - **Trap IP:** Shows the IP where the Trap to be sent.
 - **Subnet Mask:** Shows the Subnet Mask set of the device.
 - **Gateway:** Shows the Gateway set of the device.
-


View Trap: The Trap function can receive the events that happen from the Web Management Switch in the Monitor List.

There is a light indicator behind the “*View Trap*” button, when the light indicates in green, it means that there is no trap transmitted, and else when it indicates in red, it means that there is new trap transmitted, this is to remind us to view the trap. (Figure 8)



Figure 8.

When the “*View Trap*” button is clicked, a Trap Information window will pop out, it will show the trap information including the Symbol, Time, Device IP and the Event occurred. (Figure 9)

The symbol “” represents the trap signal arise, this symbol will disappear after you review and click on the event record.

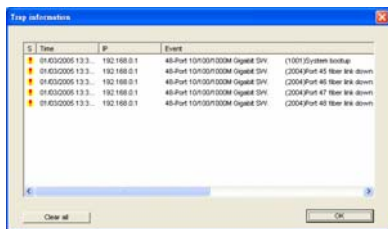


Figure 9.

Note: In order to receive Trap information, switch has to be configured with Trap IP and Trap Events in Web browser, which are available in the Trap Setting Menu (see Page 45 for detail).

Add Item: To add a device to the Monitor List manually, enter the IP Address of the device that you want to monitor.

Delete Item: To delete the device in the Monitor List.

Device Setting

You can set the device by using the function key in the Device Setting Dialog box.

Configuration Setting: In this Configuration Setting, you can set the IP Address, Subnet Mask, Gateway, Set Trap to (Trap IP Address), System name and Location.

Select the device in the Discovery list or Monitor List and press this button, then the Configuration Setting window will pop out as Figure 10, after filling up the data that you want to change, you must fill up the password and press the “Set” to process the data changed immediately. The default password of this 48-Port 10/100/1000Mbps Gigabit Ethernet Web Smart Switch configuration is “*admin*”.



Figure 10. Configuration Setting

Password Change: You can use this Password Change when you need to change the password, fill in the password needed in the dialog box and press “Set” button to proceed the password change immediately.

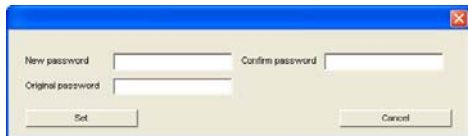


Figure 11. Password Change

Firmware Upgrade: When the device has a new function, there will be a new firmware to update the device, use this function to update.

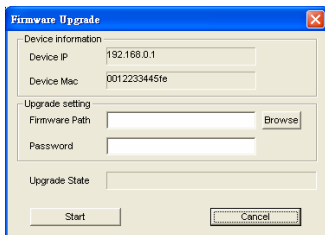


Figure 12.

Web Access: Double click the device in the Monitor List or select a device in the Monitor List and press this “**Web Access**” button to access the device in Web browser.

Toolbar

The toolbar in the Web Management Utility have four main tabs, File, View, Options and Help.

In the “**File TAB**”, there are Monitor Save, Monitor Save As, Monitor Load and Exit.

- **Monitor Save:** To record the setting of the Monitor List to the default, when you open the Web Management Utility next time, it will auto load the default recorded setting.
- **Monitor Save As:** To record the setting of the Monitor List in appointed filename and file path.
- **Monitor Load:** To manually load the setting file of the Monitor List.
- **Exit:** To exit the Web Management Utility.

In the “**View TAB**”, there are view log and clear log function, this function will help you to show trap setting.

- **View Log:** To show the event of the Web Management Utility and the device.
- **Clear Log:** to clear the log.

In the “**Option TAB**”, there are Refresh Time function, this function helps you to refresh the time of monitoring the device. Choose **15 secs, 30 secs, 1 min, 2 min and 5 min** to select the time of monitoring.

In the “**Help TAB**”, there is About function, it will show out the version of the Web Management Utility.

Configuring the Switch

GSW-4875 has a Web GUI interface for smart switch configuration. The Switch can be configured through the Web Browser. A network administrator can manage, control and monitor the switch from the local LAN. This section indicates how to configure the Switch to enable its smart functions including:

- ◆ Port Setting (Speed/Disable, Duplex mode, Flow Control and Port base QoS)
- ◆ Virtual LAN Group setting (VLAN)
- ◆ Trunk
- ◆ Port Mirroring
- ◆ System Setting
- ◆ Device status and Statistic

Login

Before you configure this device, note that when the Web Smart Switch is configured through an Ethernet connection, make sure the manager PC must be set on same the **IP network**. For example, when the default network address of the default IP address of the Web Smart Switch is **192.168.0.1**, then the manager PC should be set at 192.168.0.x (where x is a number between 2 and 254), and the default subnet mask is 255.255.255.0.

Open your Web browser such as Internet Explorer 5.0 or above.

Enter IP address **http://192.168.0.1** (the factory-default IP address setting) to the address location.



Figure 13.

Or through the Web Management Utility, you do not need to remember the IP Address, select the device shown in the Monitor List of the Web Management Utility to settle the device on the Web Browser.

When the following dialog page appears, remain enter the default password "**admin**" and press Login to enter the main configuration window.

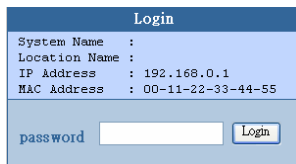
A screenshot of a 'Login' dialog box. The title bar says 'Login'. Below the title bar, there are four lines of text: 'System Name :', 'Location Name :', 'IP Address : 192.168.0.1', and 'MAC Address : 00-11-22-33-44-55'. At the bottom, there is a 'password' label followed by a text input field and a 'Login' button.

Figure 14.

After entering the password, the main page comes up, the screen will display the device status.

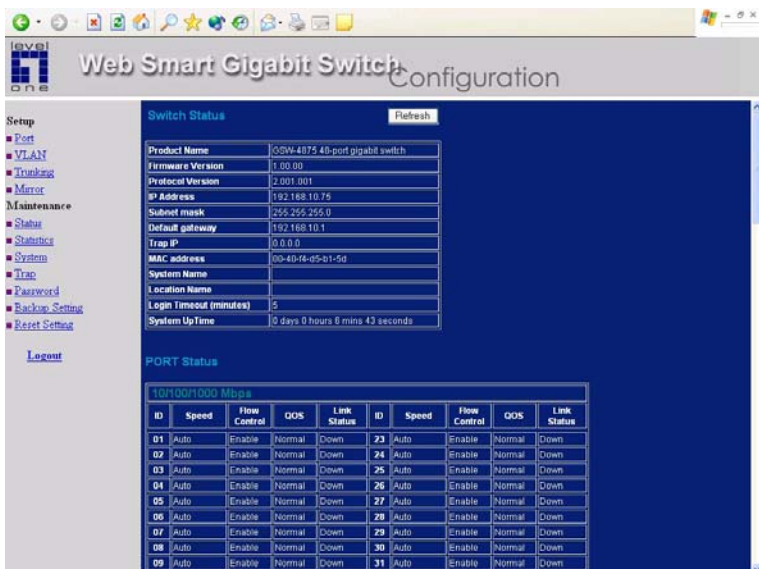


Figure 15. Device Status

Setup Menu

When the main page appears, find the *Setup menu* in the left side of the screen (Figure 16). Click on the setup item that you want to configure. There are eleven options: *Port Settings*, *VLAN Settings*, *Trunk Setting*, *Mirror Setting*, *Device Status*, *Statistic*, *System Settings*, *Trap Setting*, *Password Setting*, *Backup Setting* and *Reset Setting* as shown in the Main Menu screen.



Figure 16. Setup menu

Configuring Setup Setting

Find that there are four items, including *Port Settings*, *VLAN Settings*, *Trunk Settings* and *Mirror Settings* in Setup menu.

Port Settings

In Port Settings menu (Figure 17), this page will show each port's status, press the ID parameter to set each port's *Speed*, *Flow Control*, *QoS priority* and *Link Status*. When you need to renew the posted information, press the "Refresh" button.

The *Link Status* in the screen will show the connection speed and duplex mode; else this dialog box will show **down** when the port is disconnected.

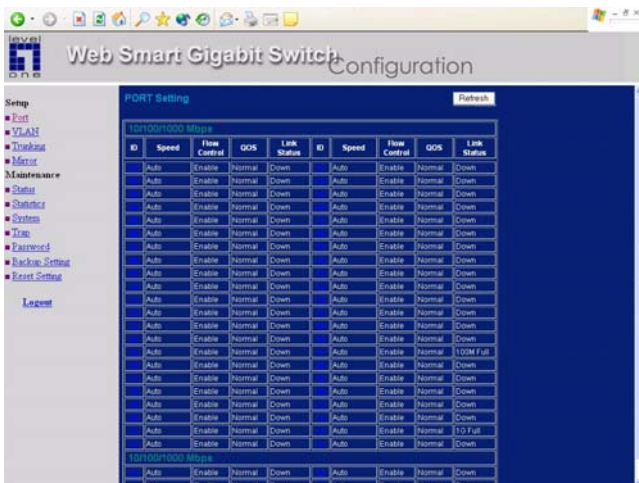


Figure 17. Port Setting

Note 1: Be sure that you have to re-setting the Gigabit port when transferring the media type (Fiber to Copper or Copper to Fiber).

Note 2: The priority of Gigabit Fiber port is higher than Copper.

To change the port setting, click on the ID parameter to enter to the selected port to configure its Speed/Disable, Flow control and QoS setting.

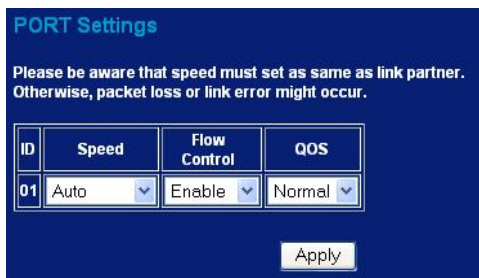


Figure 18

Speed/Disable:

This setting has six modes—*100M Full*, *100M Half*, *10M Full*, *10M Half*, *Auto* and *Disable*—for speed or port disable selections.

Flow Control:

This setting determines whether or not the Switch will be handling flow control. Set Flow Control to *Enable* for avoiding data transfer overflow. Or it sets to *Disable*; there is either no flow control or other hardware/software management.

When the port is set to *1G Full*, then the flow control will automatically set to *Disable*.

QoS:

In some ports that need to have a high priority to manage the data transfer, QoS should be change. Set the port's QoS to high to determine the port will always transfer their data first.

VLAN Settings (IEEE 802.1Q VLAN)

A VLAN is a collection of switch ports that make up a single broadcast domain. You can configure a VLAN for a single switch, or

for multiple switches. When you create a VLAN, you can control traffic flow and ease the administration of moves, adds, and changes on the network, by eliminating the need to change physical cabling.

On VLAN settings, there are two main settings, VID Table Setting and Port VLAN Setting.

VID Table Setting: Select the VID group that you set.

When you select VID Table Setting, press “Add new VID” to create new VID group, from port 01 ~ port 48 (48F), check on the port to be a member to this VLAN Group, and press “Apply” button to save the setting. To remove the selected VID group, select the VID group and press “Remove the VID” button. To modify the VID group setting, select the VID group and change the setting, and press the “Apply” button to save the settings.



Figure 19. VLAN Settings

Port VID Setting:

When you select Port VLAN setting, fill in each port’s PVID value between 1 and 4094.

IEEE 802.1Q VLAN Port VID Setting

Port	PVID	Port	PVID	Port	PVID	Port	PVID	Port	PVID	Port	PVID
01	1	02	1	03	1	04	1	05	1	06	1
07	1	08	1	09	1	10	1	11	1	12	1
13	1	14	1	15	1	16	1	17	1	18	1
19	1	20	1	21	1	22	1	23	1	24	1
25	1	26	1	27	1	28	1	29	1	30	1
31	1	32	1	33	1	34	1	35	1	36	1
37	1	38	1	39	1	40	1	41	1	42	1
43	1	44	1	45	1	46	1	47	1	48	1

Figure 20.

Port Egress Setting:

This function is to adding the 802.1Q VLAN Tag header in the packet and forward to the destination port.

Once the port dialog box was checked, when the packet was tagged, then the packet will forward directly to the destination port, and when the packet was untagged, this function will add the PVID value in the header of the packet and forward to the destination port. Otherwise, when the port dialog box was unchecked, all of the packet will just forward to destination directly.

IEEE 802.1Q VLAN Port Egress Setting ▾

Egress Rule	01	02	03	04	05	06	07	08	09	10	11	12	13	14	15	16	17	18	19	20	21	22	23	24
Tag / Untag	<input type="checkbox"/>	<input type="checkbox"/>	<input type="checkbox"/>	<input type="checkbox"/>	<input type="checkbox"/>	<input type="checkbox"/>	<input type="checkbox"/>	<input type="checkbox"/>	<input type="checkbox"/>	<input type="checkbox"/>	<input type="checkbox"/>	<input type="checkbox"/>	<input type="checkbox"/>	<input type="checkbox"/>	<input type="checkbox"/>	<input type="checkbox"/>	<input type="checkbox"/>	<input type="checkbox"/>	<input type="checkbox"/>	<input type="checkbox"/>	<input type="checkbox"/>	<input type="checkbox"/>	<input type="checkbox"/>	<input type="checkbox"/>
Egress Rule	25	26	27	28	29	30	31	32	33	34	35	36	37	38	39	40	41	42	43	44	45	46	47	48
Tag / Untag	<input type="checkbox"/>	<input type="checkbox"/>	<input type="checkbox"/>	<input type="checkbox"/>	<input type="checkbox"/>	<input type="checkbox"/>	<input type="checkbox"/>	<input type="checkbox"/>	<input type="checkbox"/>	<input type="checkbox"/>	<input type="checkbox"/>	<input type="checkbox"/>	<input type="checkbox"/>	<input type="checkbox"/>	<input type="checkbox"/>	<input type="checkbox"/>	<input type="checkbox"/>	<input type="checkbox"/>	<input type="checkbox"/>	<input type="checkbox"/>	<input type="checkbox"/>	<input type="checkbox"/>	<input type="checkbox"/>	<input type="checkbox"/>

Apply

Figure 21

Trunk Setting

The Trunk function enables to cascade two or more devices with a larger bandwidths.

There are ten Trunking groups to be set; and there are default ports in each member. Checked “Enable” to use the trunk function, select the ports in each member to be trunk, and click “Apply” to activate the selected trunk group.

ID	Enable	Member
01	<input type="checkbox"/>	01 02 03 04 05 06 07 08 <input type="checkbox"/> <input type="checkbox"/> <input type="checkbox"/> <input type="checkbox"/> <input type="checkbox"/> <input type="checkbox"/> <input type="checkbox"/> <input type="checkbox"/>
02	<input type="checkbox"/>	09 10 11 12 13 14 15 16 <input type="checkbox"/> <input type="checkbox"/> <input type="checkbox"/> <input type="checkbox"/> <input type="checkbox"/> <input type="checkbox"/> <input type="checkbox"/> <input type="checkbox"/>
03	<input type="checkbox"/>	17 18 19 20 <input type="checkbox"/> <input type="checkbox"/> <input type="checkbox"/> <input type="checkbox"/>
04	<input type="checkbox"/>	21 22 23 24 <input type="checkbox"/> <input type="checkbox"/> <input type="checkbox"/> <input type="checkbox"/>
05	<input type="checkbox"/>	25 26 27 28 <input type="checkbox"/> <input type="checkbox"/> <input type="checkbox"/> <input type="checkbox"/>
06	<input type="checkbox"/>	29 30 31 32 <input type="checkbox"/> <input type="checkbox"/> <input type="checkbox"/> <input type="checkbox"/>
07	<input type="checkbox"/>	33 34 35 36 <input type="checkbox"/> <input type="checkbox"/> <input type="checkbox"/> <input type="checkbox"/>
08	<input type="checkbox"/>	37 38 39 40 <input type="checkbox"/> <input type="checkbox"/> <input type="checkbox"/> <input type="checkbox"/>
09	<input type="checkbox"/>	41 42 43 44 <input type="checkbox"/> <input type="checkbox"/> <input type="checkbox"/> <input type="checkbox"/>
10	<input type="checkbox"/>	45 46 47 48 <input type="checkbox"/> <input type="checkbox"/> <input type="checkbox"/> <input type="checkbox"/>

Figure 22. Trunk Settings

Be sure that the selected trunk setting port must connect to the device with a same VLAN group.

Mirror Setting

Port Mirroring is a method of monitoring network traffic that forwards a copy of each incoming and/or outgoing packet from one port of a network switch to another port where the packet can be studied. It enables the manager to keep close track of switch performance and alter it if necessary.

Configuring the port mirroring by assigning a source port from which to copy all packets and a sniffer port where those packets will be sent.

The selection of the sniffer mode is as follow:

TX (transmit) mode: this mode will duplicate the data transmit from the source port and forward to the sniffer port.

RX (receive) mode: this mode will duplicate the data that send to the source and forward to the sniffer port.

Both (transmit and receive) mode: this mode will duplicate both the data transmit from and data that send to the source port, then it will forward to the sniffer port.

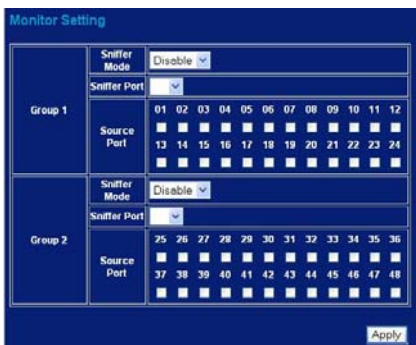


Figure 23

Device Status

Click on the “*Status*” to present the device status on this screen, it will show the System Status, Port Status, VLAN Status, Trunk Status and Mirror Status..

Press “*Refresh*” when you need to renew the posted information.

Switch Status Refresh

Product Name	GSW-4875 48-port gigabit switch
Firmware Version	1.00.00
Protocol Version	2.001.001
IP Address	192.168.10.75
Subnet mask	255.255.255.0
Default gateway	192.168.10.1
Trap IP	0.0.0.0
MAC address	00-40-f4-d5-b1-5d
System Name	
Location Name	
Login Timeout (minutes)	5
System UpTime	0 days 0 hours 19 mins 46 seconds

PORT Status


10/100/1000 Mbps

ID	Speed	Flow Control	QOS	Link Status	ID	Speed	Flow Control	QOS	Link Status
01	Auto	Enable	Normal	Down	23	Auto	Enable	Normal	Down
02	Auto	Enable	Normal	Down	24	Auto	Enable	Normal	Down
03	Auto	Enable	Normal	Down	25	Auto	Enable	Normal	Down
04	Auto	Enable	Normal	Down	26	Auto	Enable	Normal	Down
05	Auto	Enable	Normal	Down	27	Auto	Enable	Normal	Down
06	Auto	Enable	Normal	Down	28	Auto	Enable	Normal	Down
07	Auto	Enable	Normal	Down	29	Auto	Enable	Normal	Down

Figure 24

Statistic

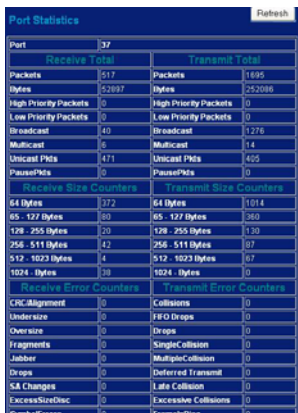
The Statistic Menu screen will show the status of each port packet count.



The screenshot shows a window titled "Statistic" with a "Refresh" button and a "Close Statistics" button. The main content is a table with columns for ID, Tx, Rx, Octets, Discard, ID, Tx, Rx, Octets, and Discard. The table is divided into sections: "Unicast Total Pkts", "Broadcast Total Pkts", and "Multicast Total Pkts". The data is presented in a grid format with alternating row colors.

Figure 25

For Detail packet information, click on the ID parameter as Figure 26.



The screenshot shows a window titled "Port Statistics" with a "Refresh" button. The main content is a table showing statistics for port 37. The table is divided into sections: "Receive Total", "Transmit Total", "Receive Size Counters", "Transmit Size Counters", "Receive Error Counters", and "Transmit Error Counters". The data is presented in a grid format with alternating row colors.

Receive Total		Transmit Total	
Packets	517	Packets	1695
Bytes	52897	Bytes	252086
High Priority Packets	0	High Priority Packets	0
Low Priority Packets	0	Low Priority Packets	0
Broadcast	40	Broadcast	1276
Multicast	6	Multicast	14
Unicast Pkts	471	Unicast Pkts	405
PausePkts	0	PausePkts	0
Receive Size Counters		Transmit Size Counters	
64 Bytes	372	64 Bytes	1014
65 - 127 Bytes	60	65 - 127 Bytes	360
128 - 255 Bytes	20	128 - 255 Bytes	130
256 - 511 Bytes	42	256 - 511 Bytes	87
512 - 1023 Bytes	4	512 - 1023 Bytes	67
1024 Bytes	38	1024 Bytes	0
Receive Error Counters		Transmit Error Counters	
CRCAlignment	0	Collisions	0
Undersize	0	FIFO Drops	0
Oversize	0	Drops	0
Fragments	0	SingleCollision	0
Jabber	0	MultipleCollision	0
Drops	0	Deferred Transmit	0
SA Changes	0	Late Collision	0
ExcessiveSizeDisc	0	Excessive Collisions	0
SymbolErrors	0	TransmitDisc	0

Figure 26

System Setting

The System Setting includes the System name, Location name, Login Timeout, IP Address, Subnet Mask and Gateway. Through the Web Management Utility, you can easily recognize the device by using the System Name and the Location Name.

The Login Timeout is to set the idle time-out for security issue, when there is no action in running the Web Smart Utility and the time is up, you must re-login to Web Smart Utility before you set the Utility.

Fill up the IP Address, Subnet Mask and Gateway for the device.

System Setting

System Name

Location Name

Login Timeout (3 - 30 minutes)

IP Address

IP address	192	168	10	75
Subnet mask	255	255	255	0
Gateway	192	168	10	1

Figure 27

Trap Setting

The Trap Setting enables the device to monitor the Trap through the Web Management Utility, set the Trap IP Address of the manager where the trap to be sent.

Trap Setting	
Trap IP	192 168 0 77 VID: 1
System Events	<input type="checkbox"/> device bootup <input type="checkbox"/> illegal login
Fiber Port Events	<input type="checkbox"/> link up / link down <input type="checkbox"/> abnormal receive error <input type="checkbox"/> abnormal transmit error
Twisted Pair Port Events	<input type="checkbox"/> abnormal receive error <input type="checkbox"/> abnormal transmit error

Apply

Figure 28. Trap Setting

System Events: Monitoring the system's trap.

Device Bootup: a trap when booting up the system.

Illegal Login: a trap when there is using a wrong password login, and it will record from where the IP to be login.

Fiber Port Events: Monitoring the Fiber port status.

Link Up/Link Down: a trap when there is linking status happens in fiber port.

Abnormal Receive Error: a trap when there are receive data error in fiber port.

Abnormal Transmit Error: a trap when there are transmit data error in fiber port.

Twisted Pair Port Events: Monitoring the twisted pair port status.

Abnormal Receive Error: a trap when there are receive data error in twisted pair port.

Abnormal Transmit Error: a trap when there are transmit data error in twisted pair port.

Abnormal: 50 error packet count within 10 seconds.

Password Setting

Password is the invaluable tool for the manager to secure Web Management Switch, use this function to change the password.

If you forget the password, press the “Reset” button in the rear panel of the Switch, the current setting includes VLAN, Port Setting... etc. will be lost and the Switch will restore to the default setting.



Figure 29. Set Password

Backup Setting

The backup tools help you to backup the current setting of the Switch. Once you need to backup the setting, press the “**Backup**” button to save the setting.

To restore a current setting file to the device, you must specify the backup file and press “**Restore**” button to proceed the setting of the recorded file.



Figure 30. Backup Setting

Note: when restoring a recorded file, the current password will not be erased.

Reset Setting

The Factory Reset button helps you to reset the device back to the default setting from the factory. Be aware that the entire configuration will be reset, the IP address of the device will be set to default setting 192.168.0.1.

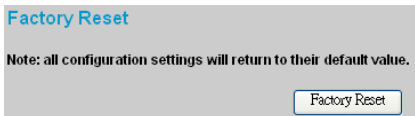


Figure 31. Reset Setting

Logout

When press this function, the web configuration will go back to first Login page.

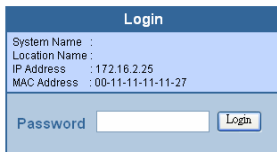


Figure 32. Logout

TECHNICAL SPECIFICATIONS

General	
Standards	IEEE 802.3 10BASE-T Ethernet IEEE 802.3u 100BASE-TX Fast Ethernet IEEE 802.3ab 1000BASE-T Gigabit Ethernet IEEE 802.3x Full Duplex Flow Control IEEE 802.3z 1000BASE-SX/LX Gigabit Ethernet
Protocol	CSMA/CD
Data Transfer Rate	Ethernet: 10Mbps (half-duplex), 20Mbps (full-duplex) Fast Ethernet: 100Mbps (half-duplex), 200Mbps (full-duplex) Gigabit Ethernet: 2000Mbps (full-duplex)
Topology	Star
Network Cables	10BASE-T: 2-pair UTP Cat. 3, 4, 5; up to 100m 100BASE-TX: 2-pair UTP Cat. 5; up to 100m 1000BASE-T: 4-pair UTP Cat. 5; up to 100m Fiber module: mini-GBIC Fiber module
Number of Ports	48 × 10/100/1000Mbps Auto-MDIX RJ-45 ports 4 × mini-GBIC fiber slot
Physical and Environmental	
AC inputs	100-240V AC, 50-60 Hz internal universal power supply
Power Consumption	70 Watts (Max)
Temperature	Operating: 0° ~ 40° C, Storage: -10° ~ 70° C
Humidity	Operating: 10% ~ 90%, Storage: 5% ~ 90%
Dimensions	440 x 210 x 44 mm (W x H x D)
EMI:	FCC Class A, CE Mark Class A, VCCI Class A
Safety:	cUL(UL60950), CB(IEC60950)

Performance

Transmits Method:	Store-and-forward
Filtering Address Table:	8K entries per device
Packet Filtering/Forwarding Rate:	10Mbps Ethernet: 14,880/pps 100Mbps Fast Ethernet: 148,800/pps 1000Mbps Gigabit Ethernet: 1,488,000/pps
MAC Address Learning:	Automatic update
Transmits Method:	Store-and-forward
RAM Buffer:	1632KBytes per device