



KVM-0260
V3

2-Port USB DVI-D Single Link Cable KVM
Switch, audio support

User Manual

Introduction

The KVM-0260 is a 2-port DVI USB Cable KVM Switch with two sets of fixed KVM cables and one QuickSwitch button for wired remote control. It also provides audio and microphone switching function for uninterrupted multimedia experience. It allows you to access, control, boot and reboot multiple multimedia computers using only one USB keyboard, mouse, DVI monitor and a speaker set and microphone.

For computers running Windows/Mac operating systems, it also provides an innovative and easy-to-use KVM Switching Software – a small Windows/Mac client application to facilitate your KVM switching operations such as computer selection, hotkey sequence programming, autoscanning, autoscanner delay time programming, independent/simultaneous audio & computer Switching, etc.

The KVM-0260 DVI USB Cable KVM Switch offers USB 2.0 interface technology for plug-and-play and hot-plug ability. In addition to connect to mouse or keyboard, those two USB 2.0 ports can also be connected to other high-speed USB devices. Users can enjoy maximum flexibility and convenience with its compact and one-piece design.

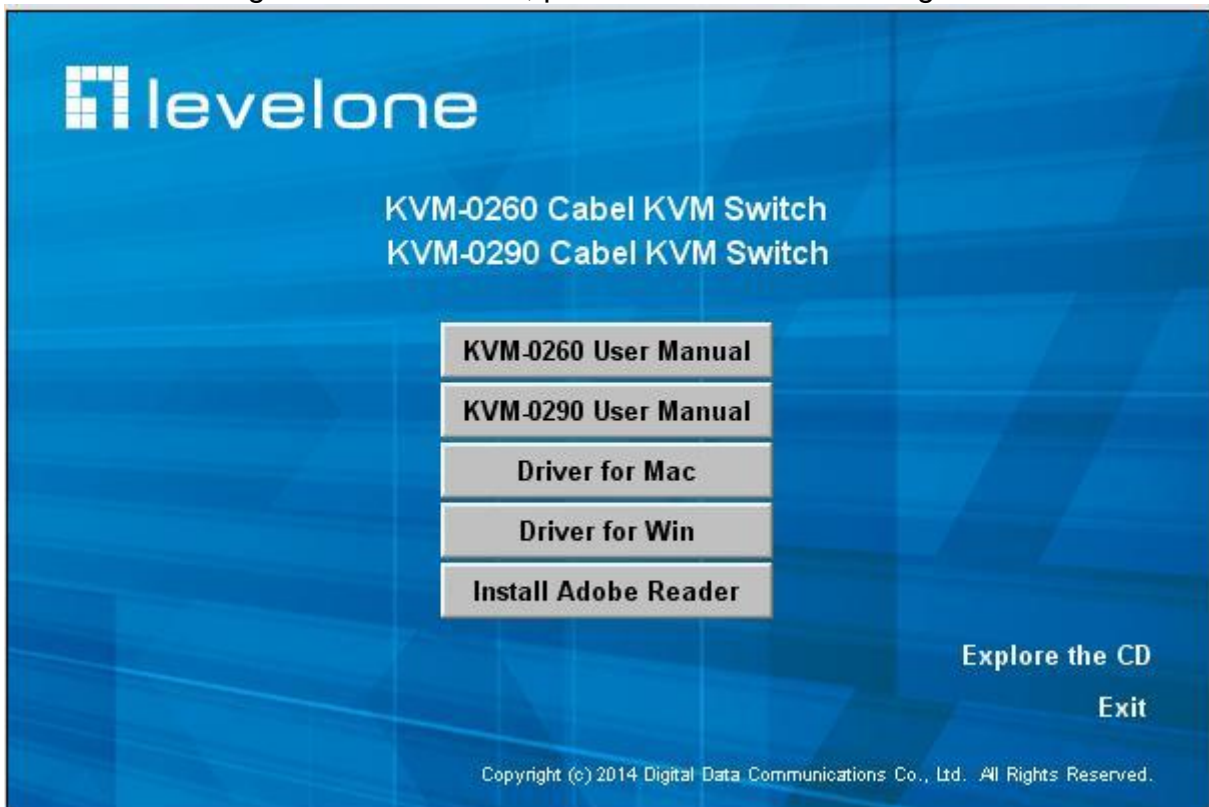
Key Features:

- Supports high-video quality – DDC2B and 1920x1200 pixels
- Control and manage 2 computers by using a single USB keyboard, mouse and monitor
- Provides auto-scanning features and audio support
- Windows and Mac switching software support
- Easy switching between computers with keyboard hotkeys
- Self powered through USB connection
- Simple Plug and Play installation
- 1 x wired QuickSwitch button for instant switching

Out-of-Box Installation

Take the Support CDROM and the Cable KVM Switch out of the box and follow the steps below for installation....

1. Insert the Support CD into your CD drive, and the installation interface will pop up. (If the Autorun feature has not been enabled on your computer. Just find the Autorun.exe on the CD and double-click it to start.)
2. For Windows/Mac: Just click the “Software Installation for Window” to start Windows switching software installation. To install Mac version, please copy the file (*.pkg format) to the local hard disk and install it from there. Follow the instructions to completion. If the installation is complete, you will see a KVM switching software icon on the system tray of your desktop. Right-click to evoke the operation menu and double-click to evoke configuration box. For operation details of the KVM switching software, please refer to the following sections.



No live connection detected



Current active computer channel is on port 1

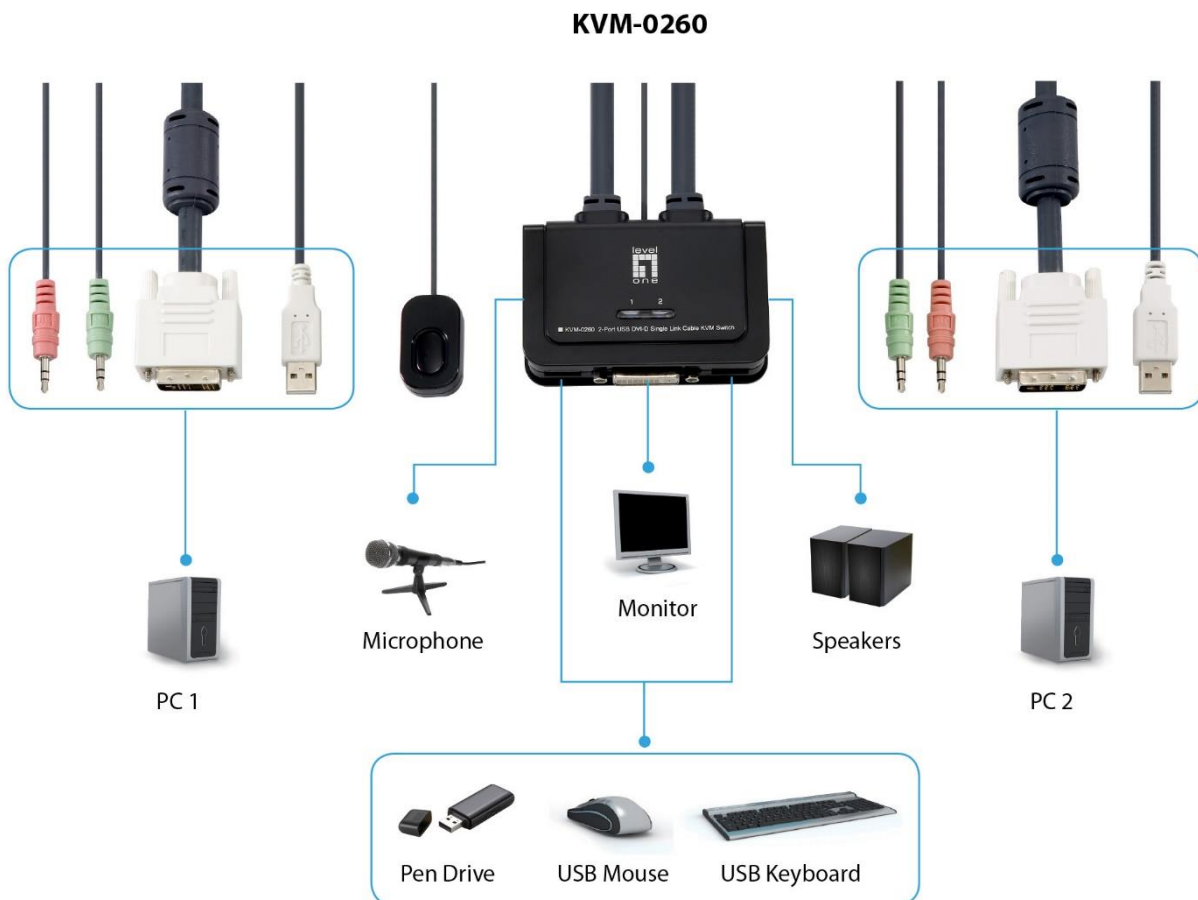


Current active computer channel is on port 2

- 💡 The Mac version of the KVM switcher software supports only Mac OS 10.4 (Tiger) and later. Earlier version of the Mac OS might or might not work well with it.
- 💡 The KVM Switcher Software supports both the Windows and the Mac OS operating systems. For other OS platforms such as Linux, you can still use the universal keyboard hotkey - *ScrLk + ScrLK* - to switch computer. However, this switching hotkey is not available on non-computer platform such as Mac OS.

Step 3. Connect a set of the fixed KVM/Audio&Mic cables to a computer's connectors. Connect another set of cables to another computer. Now you can operate the KVM Switch immediately.

- ⚡ Some older computers with USB interface might need to manually enable the USB option in the BIOS settings before you can use any USB devices. If your USB interface does not work, please check the USB option status in the BIOS.
- ⚡ If you have not yet installed a USB mouse on your computer, there might be an error message telling you that mouse is not detected and prompting you to decide whether to ignore the same message in the future, and yet you found there is no mouse movement to disable this message....So it is suggested that you should install your USB mouse on your computer first, before connecting it to this KVM Switch.




Ways for KVM Switch Operation

There are three methods to control your KVM Switch for computer and Audio/Mic channel selection: using (1) the QuickSwitch Button (a wired remote control), (2) a hotkey sequence or (3) the KVM Switcher Software.

QuickSwitch button (a wired remote control)

The QuickSwitch button is a wired remote control that allows you a direct switching control. Simply press the button to toggle between the two computers.

 You can use the QuickSwitch button to switch to an empty port that is not connected with any computer. Normally, if you use keyboard hotkey or the KVM Switcher software, you will not be able to switch to an empty port (and audio/mic channel, if binding is enabled). By default, PC port switching and audio/mic port switching are bound together, unless you specify the audio to be fixed a specific port.


Keyboard hotkeys

User-definable hotkeys for computer selection:

Hotkey sequence = Ctrl + Alt + [command key]*

* **Please refer to next section for keys that are qualified to be used as a command key**

Universal hotkey for computer toggle-switching:

 ⚡ Both the universal hotkey, ScrLk + ScrLk and the user-definable hotkey, Ctrl + Alt + [command key] **WILL NOT** allow you to switch to an empty port that is not connected with any computer. To force your KVM to switch to an empty port, just press the QuickSwitch button to switch.

Universal Hotkey sequence = ScrLk + ScrLk

* For other operating systems on computer such as Linux, you can still use this special hotkey to facilitate computer switching. This special hotkey is not available for Mac. However, you can press QuickSwitch button to switch in any case.

⚡ Each keystroke within a hotkey sequence should be pressed within 2 seconds.

Otherwise, the hotkey sequence will not be validated.

⚡ After port switching you have to wait till the KVM Switch icon shows forth the target port before you can perform next switching again. The KVM Switcher icon could be found on the system tray/task bar of your Windows/ Mac OS desktop after its installation.

⚡ All the hotkeys are only functional after your computers are booting into the OS. If you want to switch computer in the BIOS/preboot stage, press the QuickSwitch button to switch.

KVM Switcher Software (Windows & Mac platform)

In addition to computer switching, the KVM Switcher Software also allows you more advanced functions such as described in the next section....

KVM Switcher Operation Reference

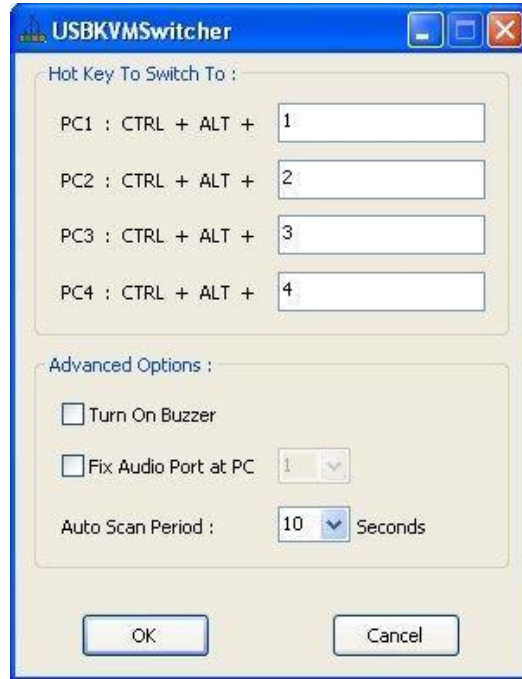
Switch to Computer x by Operation Menu

Right-click the KVM Switcher icon to evoke the operation menu, then select whichever computer that is available for switching. Once you select a computer channel, it will immediately switch to that computer. Note that the unconnected port(s) or the active port will be grayed-out and non-selectable.



Windows :

Operation Menu

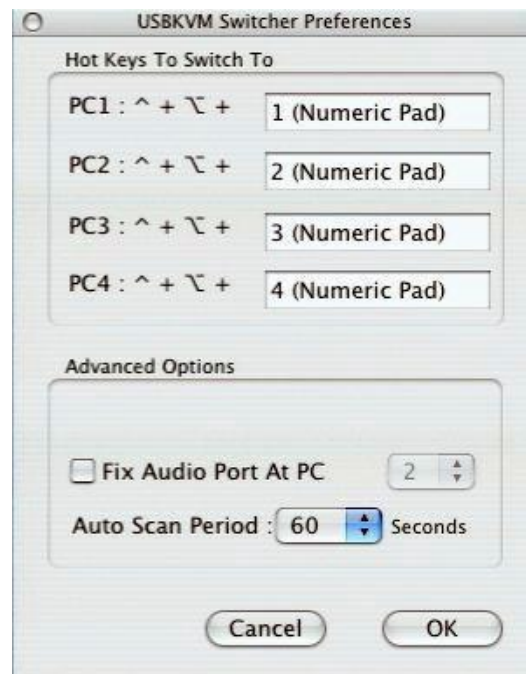


Configuration Dialog Box



Mac OS:

Operation Menu



Configuration Dialog Box

💡 The Mac version of KVM switcher user: if you want the KVM switcher open at login or kept in Doc, just select the option in the Operation Menu accordingly.

Switch to computer x by Keyboard Hotkeys

Hit the hotkey according to your current hotkey definition:

Hotkey sequence = Ctrl + Alt + [command key]*

* The factory default hotkey setting is Ctrl + Alt + 1/2/3/4 for computer 1/2/3/4. You can also use ScrLk + ScrLk to switch COMPUTER.

Define Hotkey commands:

The command key is user-definable via the configuration dialog box. You can specify the command key as you like by typing it in. For example, you can specify the hotkey for switching to COMPUTER 1 as CTRL + ALT + A by typing an A (not case-sensitive) in the editable field.

Note: Except those control keys such as Alt, Ctrl, Shift, CAPS, Tab, Esc and those function keys and edit keys, all other keys on the keyboard, including those number keys on the number pad are all qualified to be used a hotkey command key. In addition to the KVM switching software by the operation menu and the user-defined hotkeys, you can always use the universal hotkey for COMPUTER switching – ScrLk + ScrLk

Start Auto-scan

Right-click the KVM Switcher icon to evoke the operation menu, then select *Start Auto-Scan* to activate autoscanning.

Stop Auto-scan

(While autoscanning) right-click the KVM Switcher icon to evoke the operation menu, then select *Stop Auto-Scan* to de-activate autoscanning.

KVM Switching software configuration

Right-click the KVM Switcher icon and select *Settings* or double-click the icon to bring up the configuration dialog box.

Fix Audio Port at Computer x

Check this option and then select the computer to fix the audio/mic channel to the selected computer. Once this option is checked, the audio/mic channel will be fixed and become non-switchable.

Auto Scan Period

Select the Autoscan period from 10 ~ 60 seconds with an increment of 5 seconds. The Autoscan period is the time your KVM Switch will wait to switch to next computer.



Verklaring van Conformite

Wij, ondergetekende, Digital Data Communications GmbH
Adres Hohe Straße 1, 44139 Dortmund, Germany

certificeert en verklaart onder eigen verantwoordelijkheid dat het volgende product

Omschrijving KVM Switch

Merk LevelOne

Identificatie KVM-0260/ KVM-0290

In overeenstemming is met de essentiële eisen van de EMC richtlijn 2014/30/EU, gebaseerd op de volgende normen:

EU geharmoniseerde normen

EN 55032:2012 +AC:2013 (CISPR 32:2012), Class B

AS/NZS CISPR 32:2013

EN 61000-3-2: 2014 and EN 61000-3-3:2013

EN 55024:2010 +A1:2015

(IEC 61000-4-2:2008, IEC 61000-4-3:2010, IEC 61000-4-4:2012, IEC 61000-4-5:2014, IEC 61000-4-6:2013, IEC 61000-4-8:2009, IEC 61000-4-11:2004)

en voldoet daarom aan de essentiële eisen en bepalingen van de EMC en laagspanningsrichtlijn.



Het symbool bevestigt dat dit product voldoet aan de bovengenoemde normen en voorschriften..

Amanda(Shu-Wen) Chen

Name (Full Name)

2018/08/21

Date

Geschäftsführerin

Title/Department

Legal Signature



Declaration of Conformity

We, the undersigned, Digital Data Communications GmbH
Address Hohe Straße 1, 44139 Dortmund, Germany

Certify and declare under our sole responsibility that the following apparatus

Type KVM Switch
Brandname LevelOne
Product KVM-0260/ KVM-0290

**Conforms with the essential requirements of the EMC Directive
2014/30/EU, based on the following specifications applied:**

EN 55032:2012 +AC:2013 (CISPR 32:2012), Class B
AS/NZS CISPR 32:2013
EN 61000-3-2: 2014 and EN 61000-3-3:2013
EN 55024:2010 +A1:2015
(IEC 61000-4-2:2008, IEC 61000-4-3:2010, IEC 61000-4-4:2012, IEC 61000-4-5:2014,
IEC 61000-4-6:2013, IEC 61000-4-8:2009, IEC 61000-4-11:2004)

and therefore complies with the essential requirements and provisions of the EMC Directive.



The symbol confirms that this product conforms to the above named standards and regulations.

Amanda(Shu-Wen) Chen

Name (Full Name)

2018/08/21

Date

Geschäftsführerin

Title/Department

Legal Signature



Declaración de Conformidad

El fabricante **Digital Data Communications GmbH**
Dirección: Hohe Straße 1, 44139 Dortmund, Germany

Declara mediante este documento que el producto

Tipo KVM Switch
Producto KVM-0260/ KVM-0290
Marca LevelOne

Cumple con las siguientes directivas:

- Directiva EMC 2014/30/EU

El producto cumple asimismo con las siguientes normas:

EN 55032:2012 +AC:2013 (CISPR 32:2012), Class B
AS/NZS CISPR 32:2013
EN 61000-3-2: 2014 and EN 61000-3-3:2013
EN 55024:2010 +A1:2015
(IEC 61000-4-2:2008, IEC 61000-4-3:2010, IEC 61000-4-4:2012, IEC 61000-4-5:2014,
IEC 61000-4-6:2013, IEC 61000-4-8:2009, IEC 61000-4-11:2004)



Este producto ha sido diseñado para su uso sólo en interiores.
La marca CE certifica que este producto se adecua a las especificaciones y regulaciones
arriba mencionadas.

Este producto es adecuado para todos los países de la UE.

Amanda(Shu-Wen) Chen

Name (Full Name)

2018/08/21

Date

Geschäftsführerin

Title/ Department

Legal Signature



Konformitätserklärung

Der Hersteller **Digital Data Communications GmbH**
Adresse Hohe Straße 1, 44139 Dortmund, Germany

erklärt hiermit, dass das Produkt

Typ KVM Switch
Produkt KVM-0260/ KVM-0290

Markenname LevelOne

den folgenden Richtlinien entspricht:
2014/30/EU

Für die Beurteilung der Einhaltung der Konformität angewandte Normen:

EN 55032:2012 +AC:2013 (CISPR 32:2012), Class B
AS/NZS CISPR 32:2013
EN 61000-3-2: 2014 and EN 61000-3-3:2013
EN 55024:2010 +A1:2015
(IEC 61000-4-2:2008, IEC 61000-4-3:2010, IEC 61000-4-4:2012, IEC 61000-4-5:2014,
IEC 61000-4-6:2013, IEC 61000-4-8:2009, IEC 61000-4-11:2004)




Das Zeichen bestätigt, dass dieses Produkt oben aufgeführte Normen und Bestimmungen erfüllt.

Amanda(Shu-Wen) Chen
Name (Full Name)

2018/08/21
Date

Geschäftsführerin
Title/Department


Legal Signature



Déclaration de Conformité

Nous, les soussignés **Digital Data Communications GmbH**
Adresse Hohe Straße 1, 44139 Dortmund, Germany

Certifie et déclare sous sa seule responsabilité que le produit suivant

Type KVM Switch
Produit KVM-0260/ KVM-0290

Enseigne LevelOne

**En conformité avec les exigences essentielles de la directive 2014/30/EU
sur la base des normes suivantes:**

Les normes harmonisées d' EU

EN 55032:2012 +AC:2013 (CISPR 32:2012), Class B
AS/NZS CISPR 32:2013
EN 61000-3-2: 2014 and EN 61000-3-3:2013
EN 55024:2010 +A1:2015
(IEC 61000-4-2:2008, IEC 61000-4-3:2010, IEC 61000-4-4:2012, IEC 61000-4-5:2014,
IEC 61000-4-6:2013, IEC 61000-4-8:2009, IEC 61000-4-11:2004)



Le symbole confirme que ce produit répond aux normes et règlements ci-dessus ..

Amanda(Shu-Wen) Chen

Name (Full Name)

2018/08/21

Date

Geschäftsführerin

Title/Department

Legal Signature



Dichiarazione di conformità

In fabbricante **Digital Data Communications GmbH**
Indirizzo Hohe Straße 1, 44139 Dortmund, Germany

Dichiara qui di seguito che il prodotto

Tipo KVM Switch
Prodotto KVM-0260/ KVM-0290

Nome marca LevelOne

Risulta in conformità a quanto previsto dalle seguenti direttive comunitarie:
2014/30/EU

Sono stati applicati i seguenti standard per assicurarne la conformità:

EN 55032:2012 +AC:2013 (CISPR 32:2012), Class B
AS/NZS CISPR 32:2013
EN 61000-3-2: 2014 and EN 61000-3-3:2013
EN 55024:2010 +A1:2015
(IEC 61000-4-2:2008, IEC 61000-4-3:2010, IEC 61000-4-4:2012, IEC 61000-4-5:2014,
IEC 61000-4-6:2013, IEC 61000-4-8:2009, IEC 61000-4-11:2004)



Il simbolo CE conferma che questo prodotto è conforme ai suddetti standard e regolamentazioni.

Amanda(Shu-Wen) Chen

Name (Full Name)

2018/08/21

Date

Geschäftsführerin

Title/Department

Legal Signature



Declaração de Conformidade

O fabricante Digital Data Communications GmbH

Morada Hohe Straße 1, 44139 Dortmund, Germany

Declara que o produto

Tipo KVM Switch

Produto KVM-0260/ KVM-0290

Cumpra as seguintes directivas:

2014/30/EU

Os seguintes standards foram consultados para avaliar a conformidade:

EN 55032:2012 +AC:2013 (CISPR 32:2012), Class B

AS/NZS CISPR 32:2013

EN 61000-3-2: 2014 and EN 61000-3-3:2013

EN 55024:2010 +A1:2015

(IEC 61000-4-2:2008, IEC 61000-4-3:2010, IEC 61000-4-4:2012, IEC 61000-4-5:2014,
IEC 61000-4-6:2013, IEC 61000-4-8:2009, IEC 61000-4-11:2004)



O símbolo confirma que este produto está conforme os padrões e regulamentações acima referidos.

Amanda(Shu-Wen) Chen

Name (Full Name)

2018/08/21

Date

Geschäftsführerin

Title/Department

Legal Signature