



# LevelOne

## User Manual

PLI-4510

500Mbps Powerline Adapter  
with Mains Pass-Through

Ver. 1.0

# Table of Contents

Chapter 1 – Introduction .....	2
1.1 Overview .....	2
1.2 Specification .....	2
1.3 Casing Details.....	3
1.4 Package Contents .....	5
1.5 System Requirements.....	5
Chapter 2 – Installation & Uninstallation .....	6
2.1 Installing Powerline Device .....	6
2.2 Installation of Powerline Utility .....	6
2.3 Uninstallation of Configuration Utility .....	15
3.1 Main Tab.....	16
3.2 Privacy Screen.....	21
3.3 Diagnostics Screen .....	22
3.4 About Screen .....	23
Chapter 4 – Individual HomePlug AV Network Stup(Optional.....	24
4.1 Creating a new individual HomePlug AV(networkAB).....	24
4.2 Adding Bridge C to existing Network AB (Network ABC) .....	25
4.3 Removing Bridge B from Bridge A & C Network and join with Bridge D & E (Network BDE).....	26
4.4 Troubleshooting .....	27

# Safety

## FCC

This equipment has been tested and found to comply with Part 15 Class B of the FCC Rules. Operation is subject to the following two conditions:

- (1) This device may not cause harmful interference
- (2) This device must accept any interference received, including interference that may cause undesired operation.

## CE

This equipment is in compliance with the requirements of the following regulations: CE Mark, 89/336/EEC

## RoHS

This product is RoHS compliant.

# Chapter 1 – Introduction

## 1.1 Overview

HomePlug Powerline is an excellent solution that can be used to extend your network. In the home or small office building, use HomePlug Ethernet Bridges to link multiple locations without the need to run long Ethernet cables. Combined with a broadband DSL/Cable connection, every room with electrical power outlets will have easy access to high-speed Internet connection. With the HomePlug AV speed of up to 500Mbps, this easy-to-setup solution can provide fast streaming HD movies, online multiplayer games, and other data intensive activities for today's HD Entertainment Center demand.

## 1.2 Specification

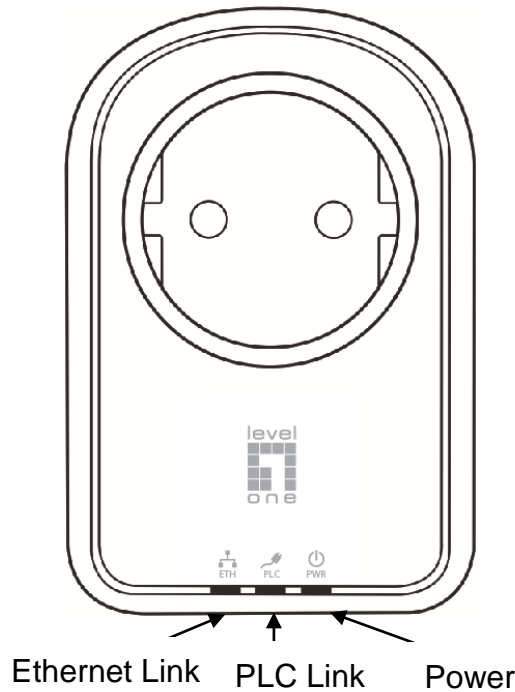
Main Chipset	Qualcomm AR7420
Computer Interface	IEEE802.3 ; IEEE802.3u
Data PHY Rate	Up to 500 Mbps
Standards	HomePlug AV
Network Interface	One RJ-45 (10/100Base-T Ethernet) 500Mbps over Powerline and 10/100Mbps over Ethernet
Security	128-bit AES Link Encryption with Key Management
Frequency Band	2-50 Mhz
Modulation Schemes	OFDM Symbol Modulation on Line synchronization 1024/256/64/16/8—QAM, QPSK, BPSK, ROBO Carrier Modulation
Additional Protocols	Mix of TDMA and CSMA/CA channel access scheme; CO device generates a periodic beacon carrier for channel access scheme
Operation Range	Estimated range of 300 meters in wall power lines
Cabling	100Base-T ; Cat. 5 UTP Cable
Operating Temperature	0° C to 40° C ambient temperature
Storage Temperature	-20° C to 70° C ambient temperature
Humidity	10% to 90% maximum (non-condensing)
Power Input	100 ~ 240V @ 50/60Hz Internal
Housing	Plastic (93.7mm x 62mm x 38mm)
Status Lights	Power: On/Off/Flashing 1 second ON, 14 seconds OFF (Standby Mode) PLC(Powerline) Link: Red/Orange/Green/Off

	Ethernet Link: Solid/Off/Flashing
Certifications	HomePlug AV Powerline Certification FCC Class B / CE Mark

### 1.3 Casing Details

#### Front Casing

The front casing contains 3 status lights: Power, PLC Link, and Ethernet Link.



#### Status Lights

##### Power

On: This HomePlug AV 500Mbps nano Pass Thru is receiving electrical power

Off: Power off

Flashing Green (1 second ON, 14 second OFF ) : Device in standby mode

##### PLC Link

The PLC (Powerline) Link light will indicate the overall speed of your network with 3 colors:

Red: Minimum connection indicates weak signal and slower network speed: less than 50Mbps

Orange: Normal signal with standard network speed: 50-99Mbps

Green: Excellent signal with optimal network speed: 100Mbps+

Off: No activity. This HomePlug AV 500Mbps nano Pass Thru is not connected

### Ethernet Link

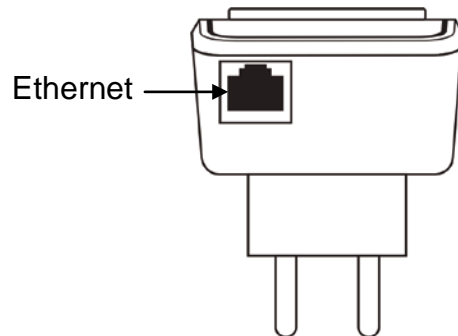
Solid Green: 10/100 Mbps port linked

Off: Ethernet Link not active

Flashing Green: Data sending

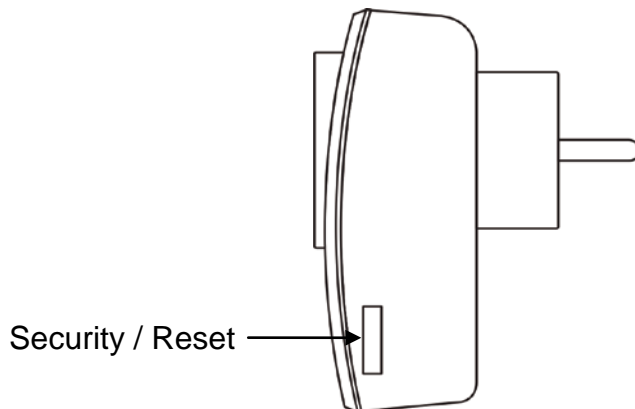
### Bottom Casing

The bottom casing contains an Ethernet Port.



### Right Casing

The right casing contains a Security/Reset Button (dual function)



### Security

This function is designed to generate an individual HomePlug AV network group under multiple nodes environment. Please refer to the optional **Individual HomePlug AV Network Setup** section below for more details.

### Reset

This function is used to clear ALL data and restore ALL settings to the factory default values. Note: The HomePlug AV 500Mbps nano Pass Thru must be plugged in to restore it to factory defaults. Hold the Reset button for 13 sec then release.

## **1.4 Package Contents**

Make sure that you have the following items:

- PLI-4510
- RJ-45 Ethernet LAN cable
- Quick Installation Guide
- CD User Manual / QIG/Utility

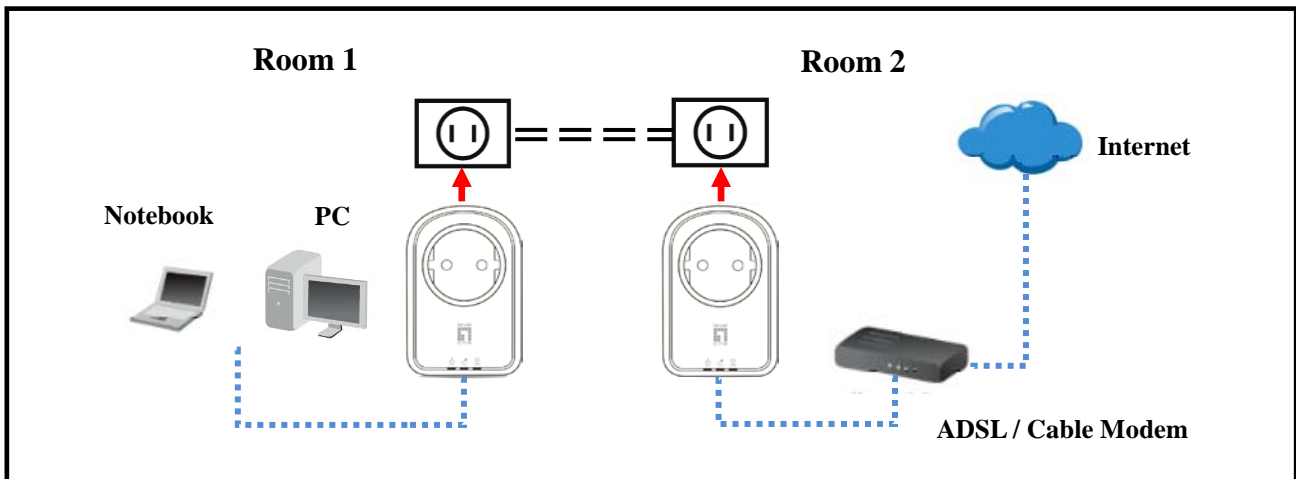
## **1.5 System Requirements**

- Powerline Ethernet Adaptor can support any Operation System. But the Powerline Utility can only support Windows 2000/XP/Vista/Windows 7.
- Pentium III 300 MHz or above
- Powerline device
- AC power outlet

# Chapter 2 – Installation & Uninstallation

## Connection of Powerline Ethernet Adapter

Ethernet Cable (RJ-45) .....  
Powerline - - - - -



### 2.1 Installing Powerline Device

1. If you have the SINGLE PACKAGE of Powerline, Connect the supplied RJ45 Ethernet cable from your PC's Ethernet port to the Powerline Ethernet Adapter's LAN Ports or connect the supplied RJ45 Ethernet cable from your xDSL/Cable Modem's Ethernet port to the Powerline Ethernet Adapter's LAN Ports.
2. If you have the TWIN PACKAGE of Powerline, connect the supplied RJ45 Ethernet cable from your PC's Ethernet port to the Powerline Ethernet Adapter's LAN Ports and connect the supplied RJ45 Ethernet cable from your xDSL/Cable Modem's Ethernet port to the Powerline Ethernet Adapter's LAN Ports.
3. Connect the Powerline Ethernet Adapter to your wall-mounted power outlet.
4. Check if the **PLC LED** of Powerline Ethernet Adapter is **ON**, the Powerline Ethernet Adapter is connected and suitable for Internet Connections.
5. Check if the **PLC LED** is **OFF**, the Powerline Ethernet Adapter isn't connected and suitable for Internet Connections. Please follow next step to have it connected and suitable for Internet Connections.

### 2.2 Installation of Powerline Utility

The Configuration Utility enables the users to identify HomePlug devices on the Powerline network; measures data rate performance, ensures privacy and performs diagnostics by setting user defined



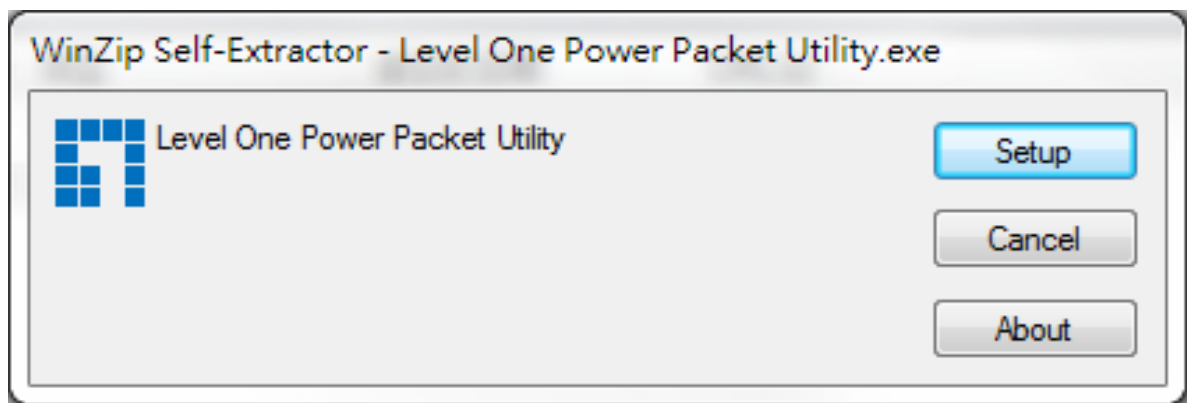
secure Powerline networks.

Users are requested to verify that no other Encryption Management Utilities are installed prior to the installation of this utility. Other utilities should be uninstalled before installing this utility.

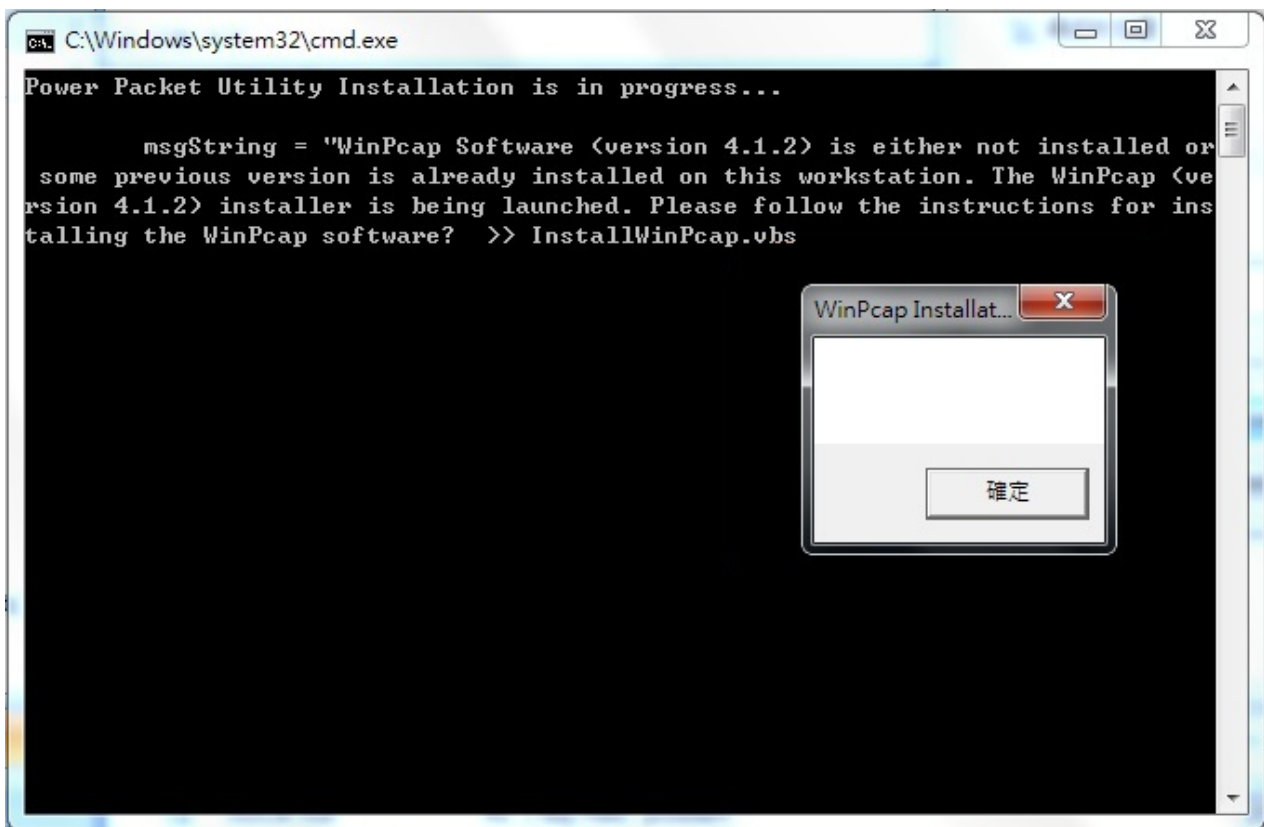
1. In order to install, insert Configuration Utility CD-ROM into the computer's CD-ROM drive. The program shall run automatically. Alternatively this can also be done manually by double clicking the **autorun.exe** file on the CD.
2. For **Windows 7 / Vista User** only, for Security reasons Windows 7 / Vista requires the installer program to have administrator privileges so the new policy called " **User Account Control** " has been introduced in Windows 7 / Vista. If UAC is enabled Windows pops up a window " **User Account Control** " Windows need your permission to continue. User needs to click " **Yes / Allow** " to continue.
3. Please click " **Utility** " button to continue.



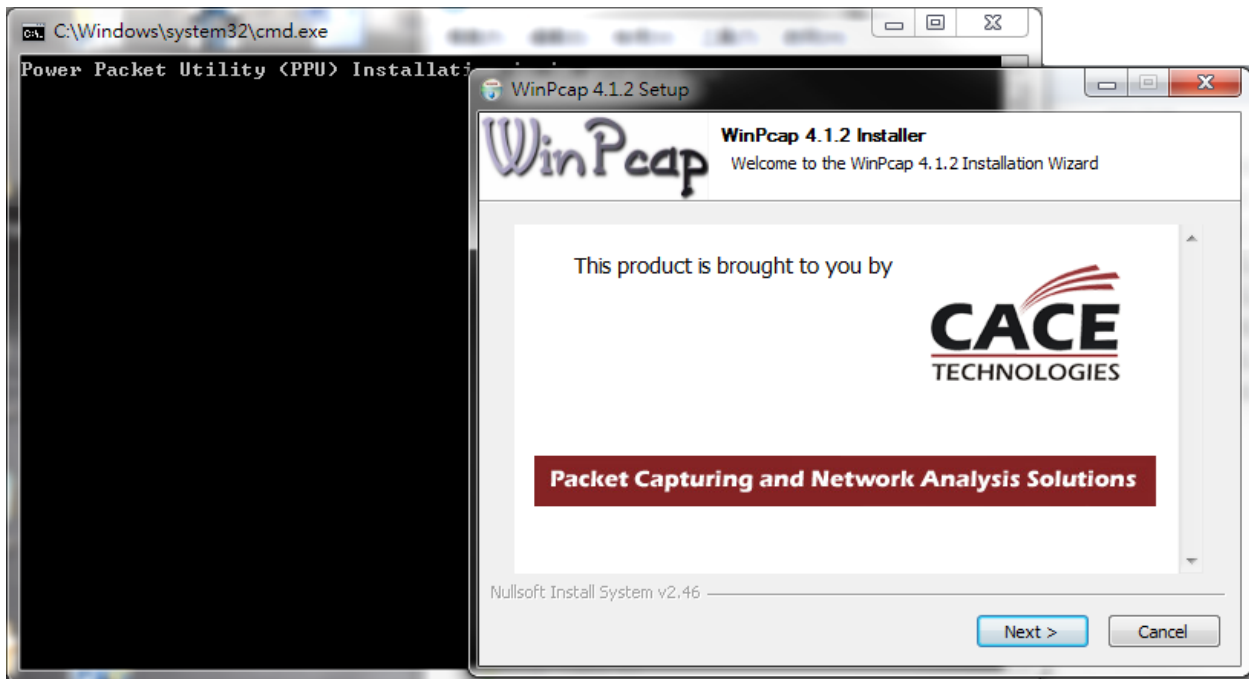
4. Click **“Setup”** button to continue.



5. Click **“Confirm”** button to continue.



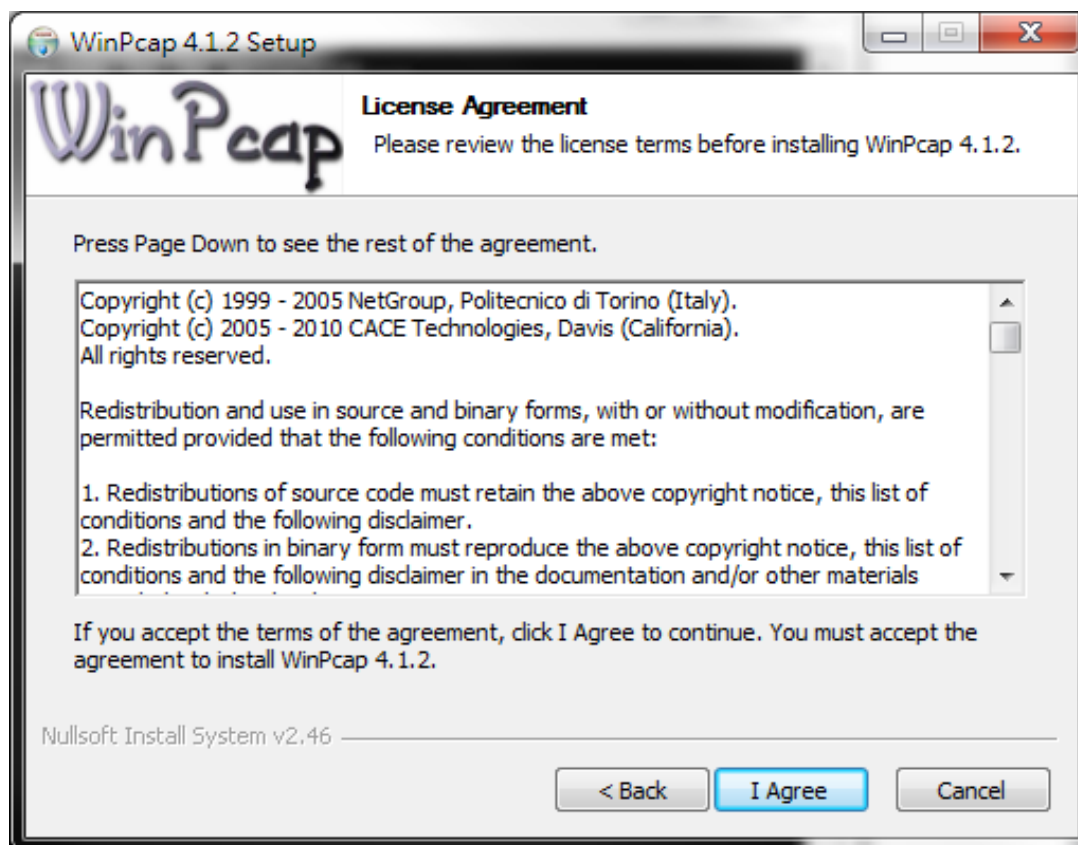
6. Click “Next” button to continue.



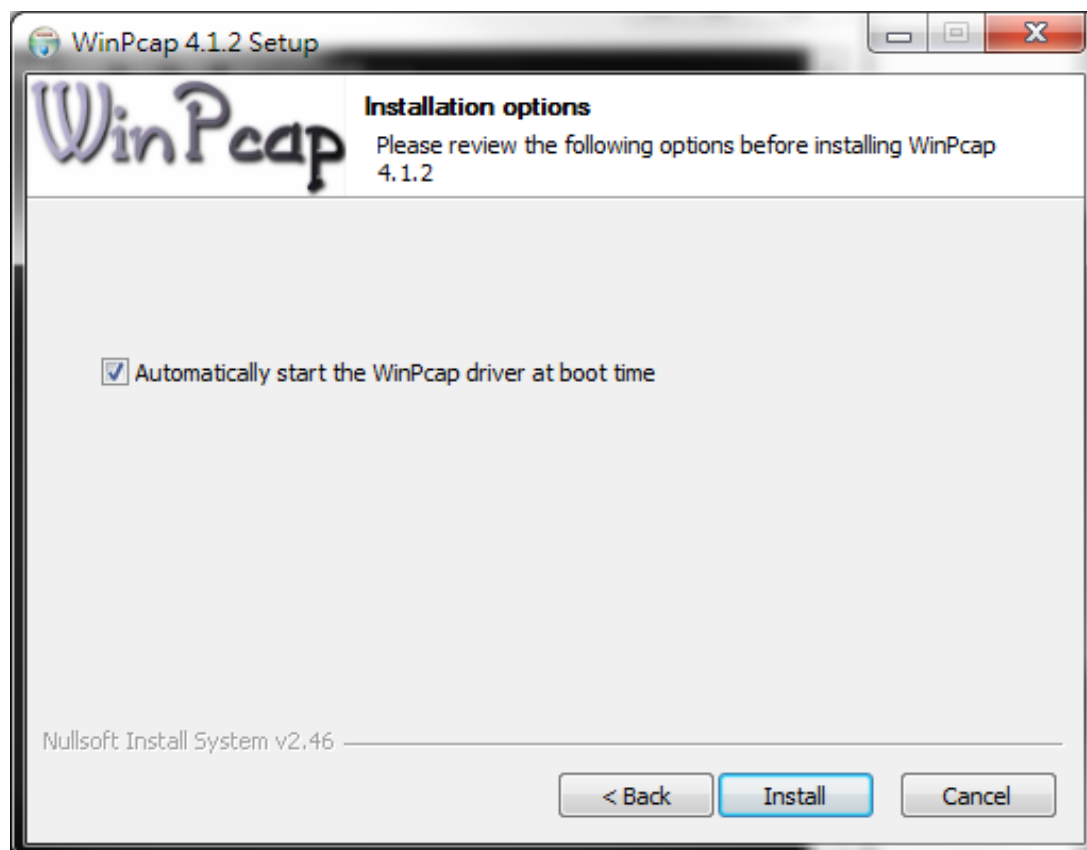
7. Click “Next ” button to continue.



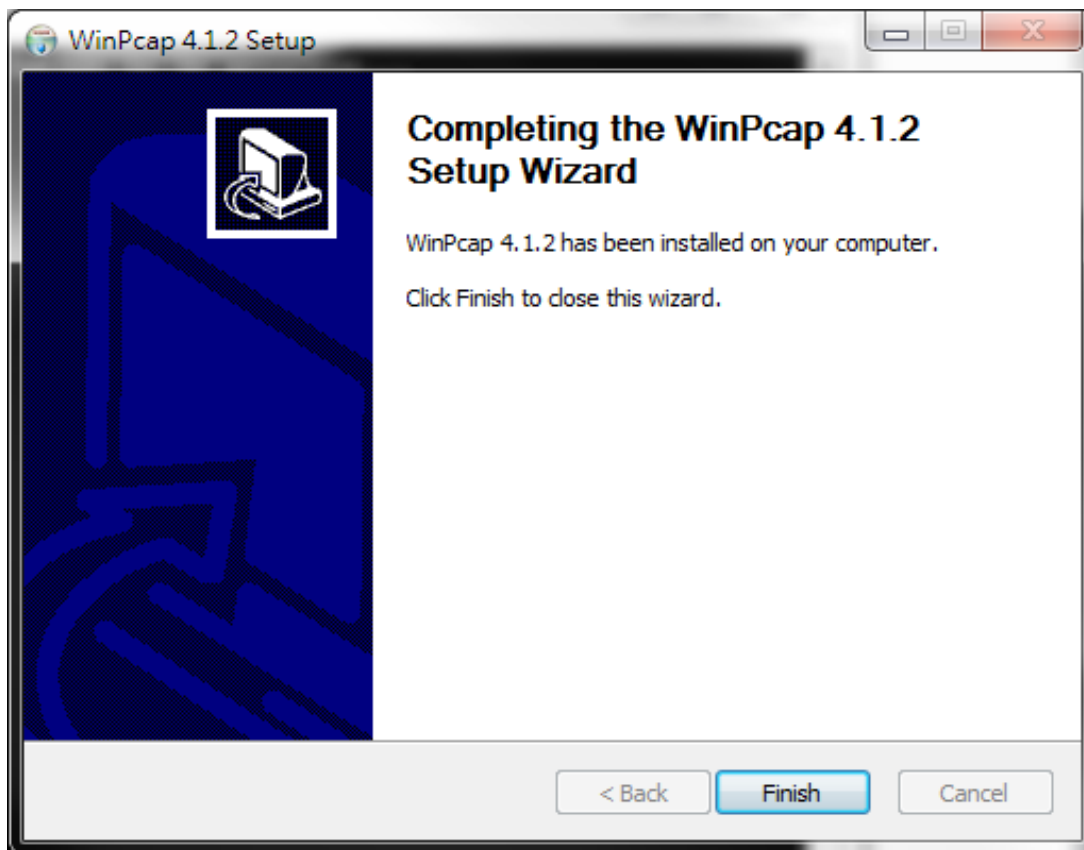
8. Click “I Agree” button to continue



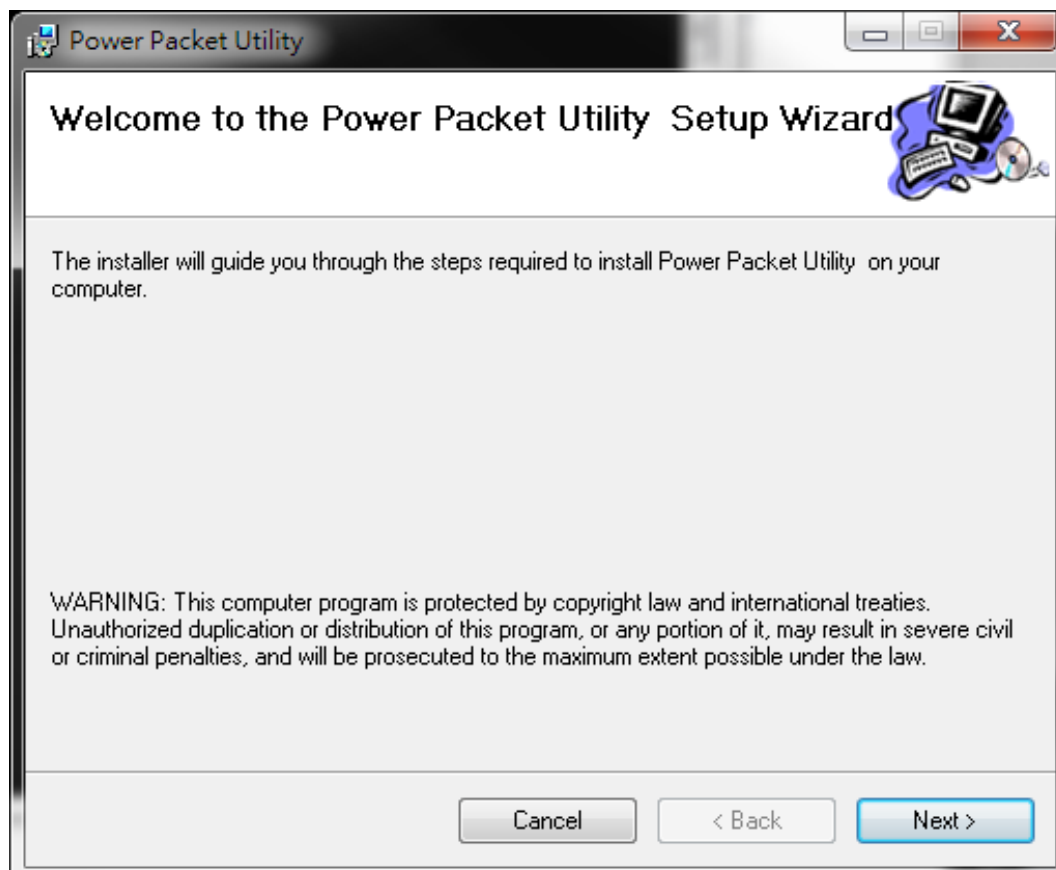
9. Click “Install ” button to continue.



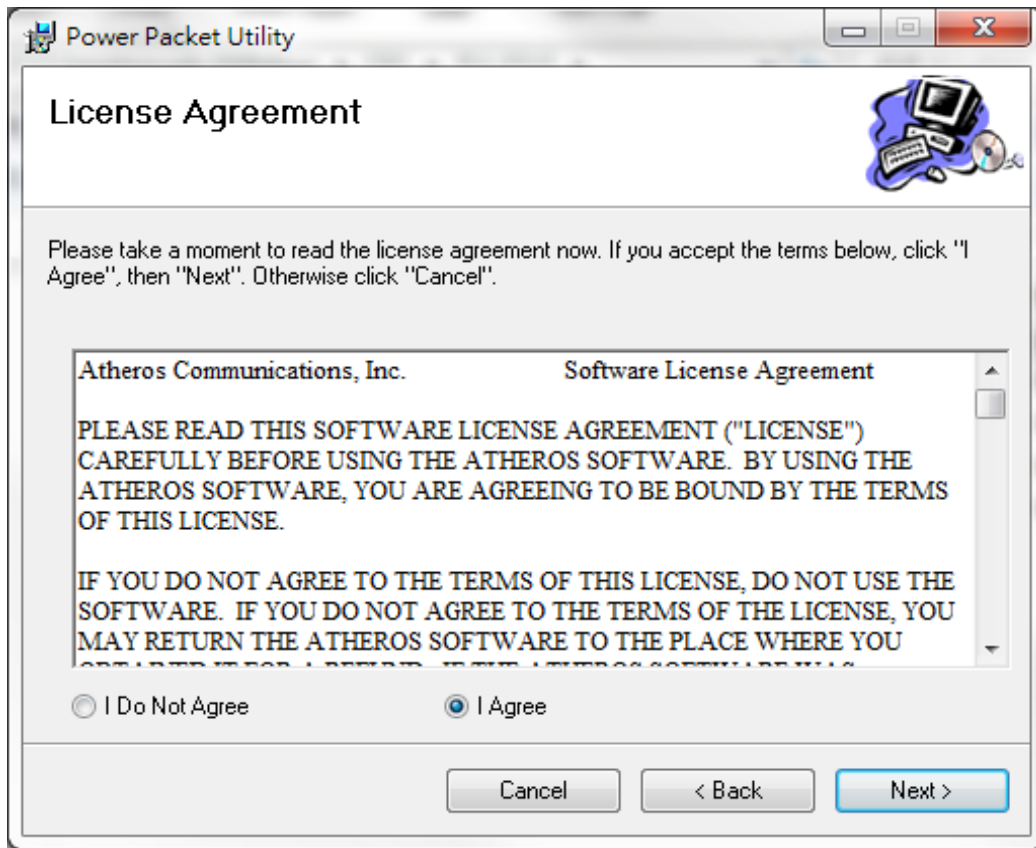
10. Click “**Finish**” button to continue.



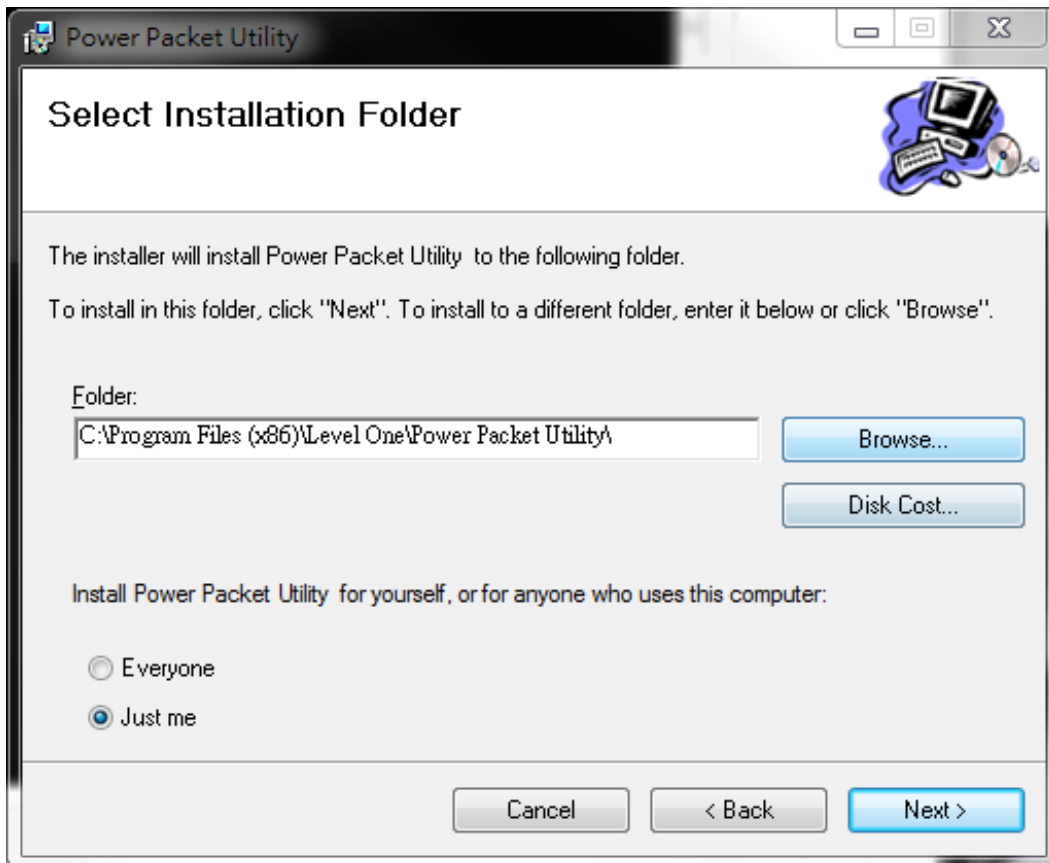
11. Click “**Next**” button to continue.



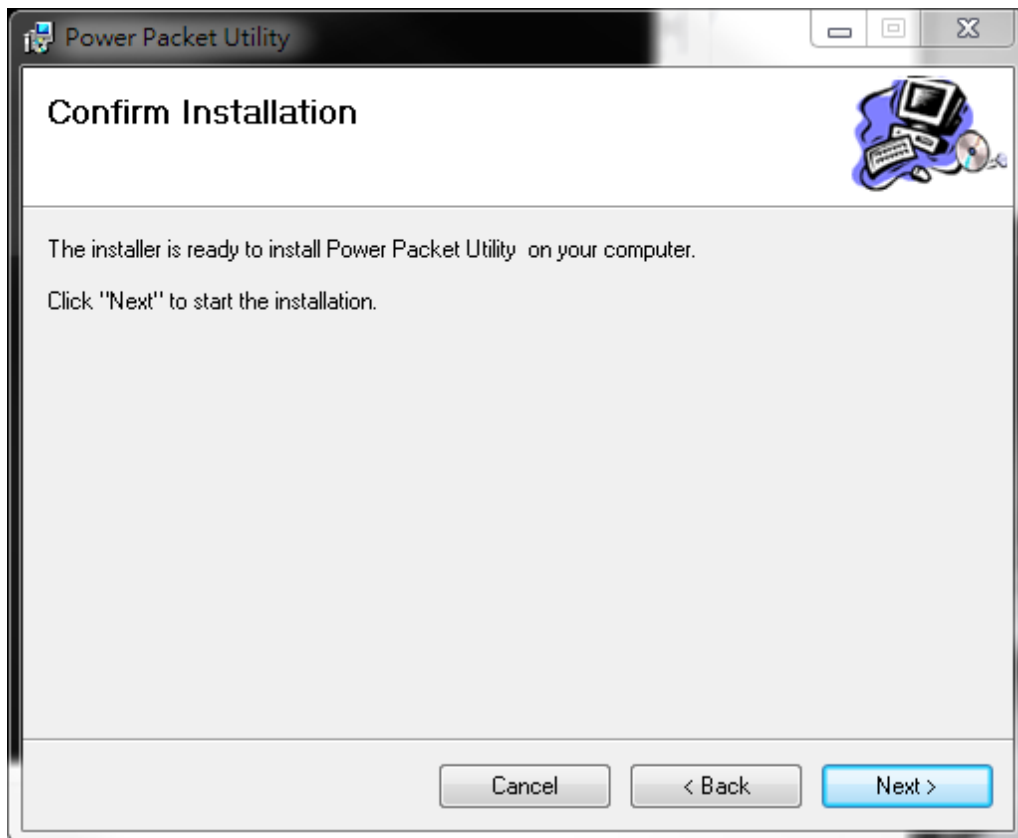
12. Click **"I Agree & Next"** button to continue.



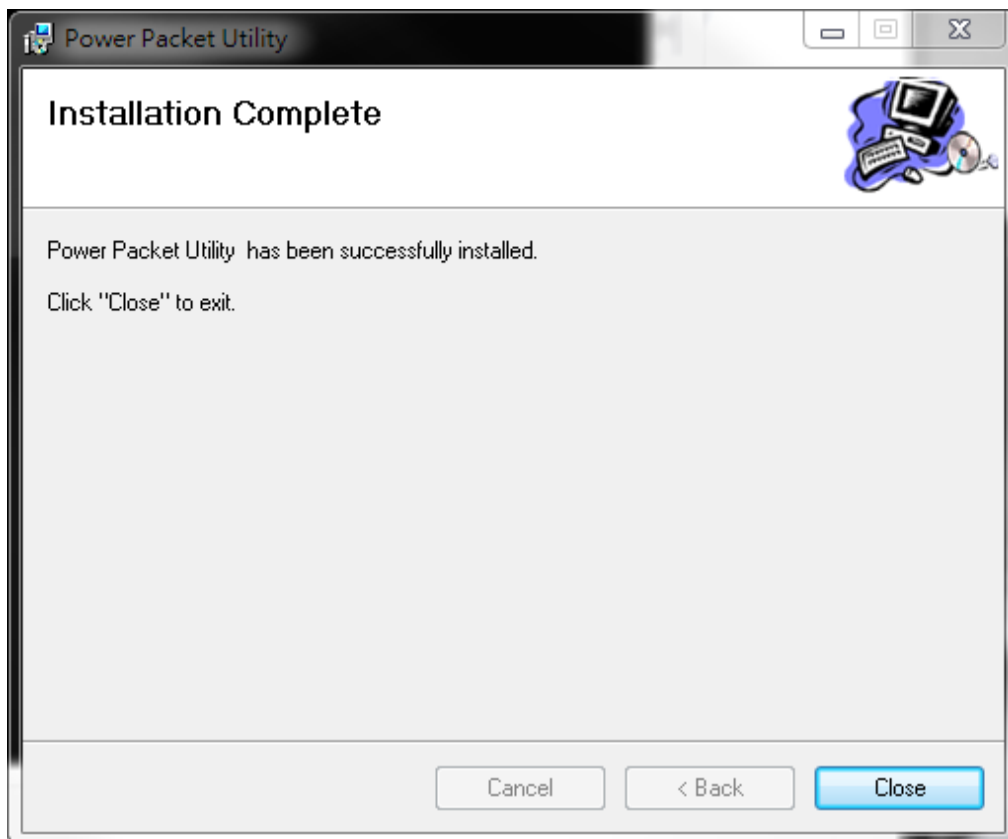
13. Click **"Next"** button to continue.



14. Click “**Next**” button to continue.



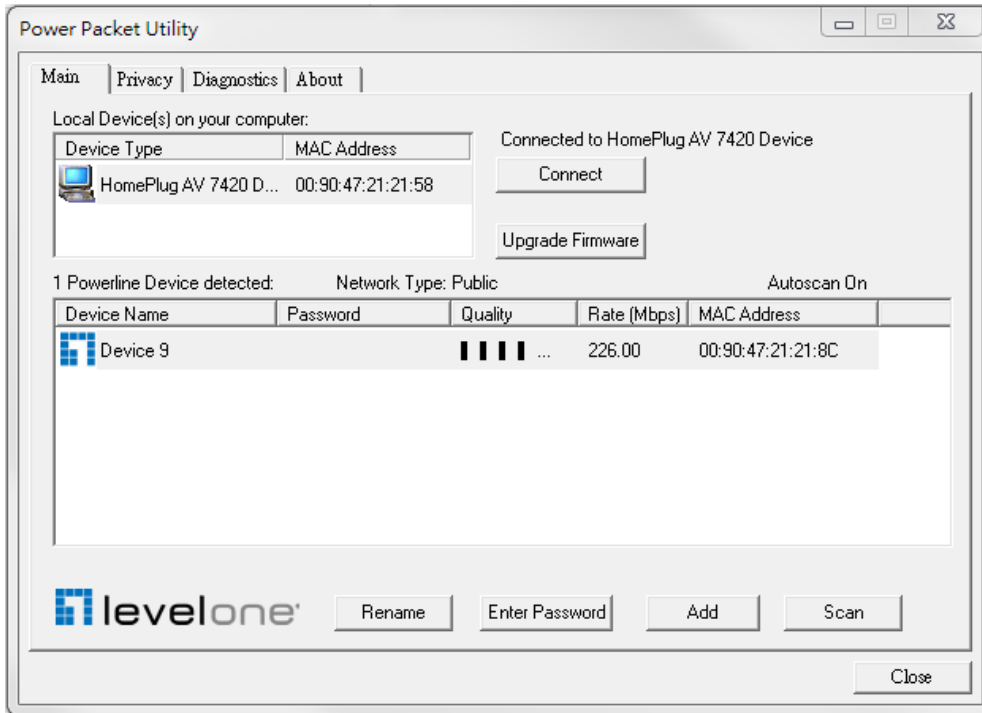
15. Click “**Close**” button to exit



16. nected lo



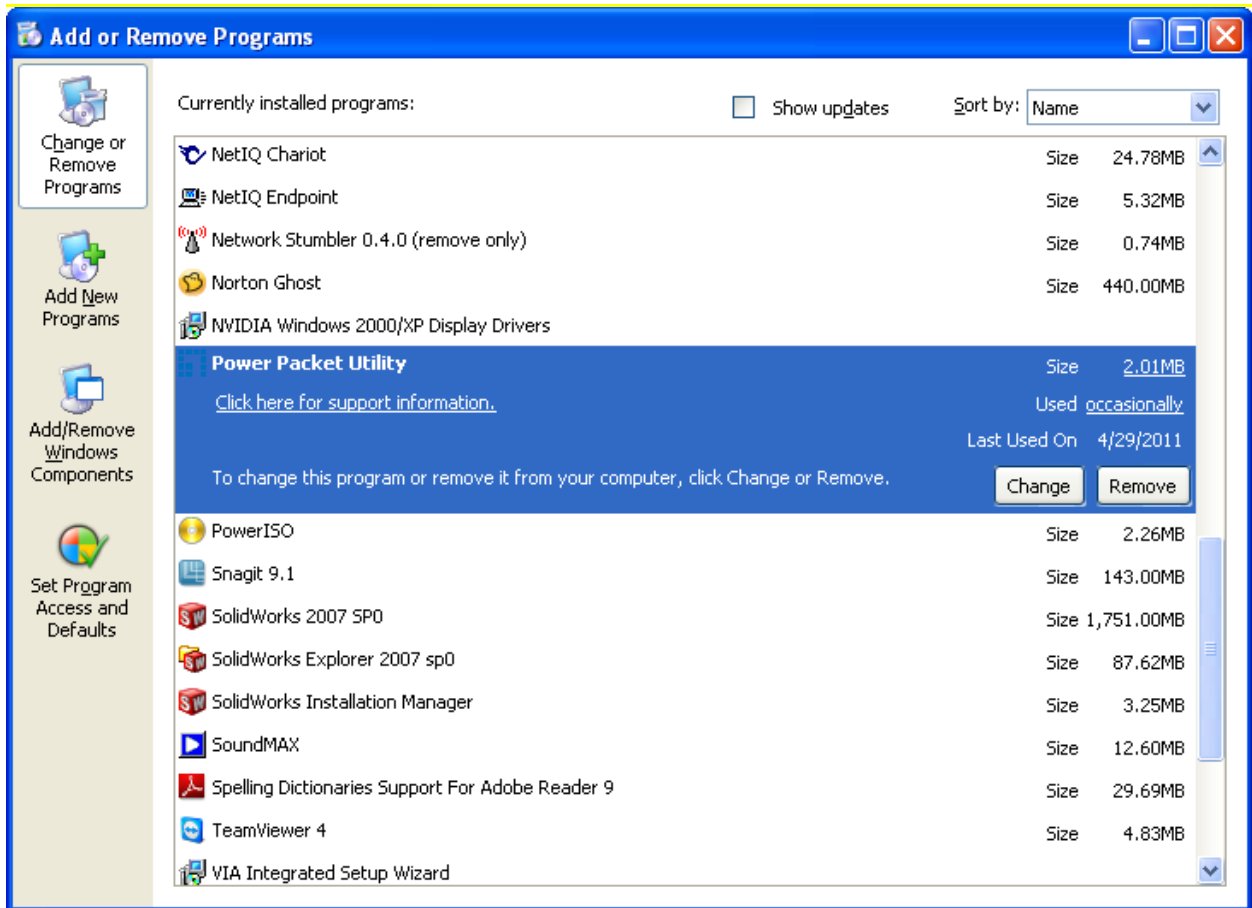
17. You can see your device working well. The top panel of the screen shot shows a Homeplug device connected locally to your computer. The bottom panel shows one device connected remotely to the computer running the utility.





## 2.3 Uninstallation of Configuration Utility

1. To uninstall the **Configuration Utility**, go to the “**Control Panel**” of your system.
2. Open the “**Add/Remove Programs**”.
3. Select and double click on the “**Powerline Utility**” in the **Add/Remove Programs Properties**.



4. Follow the on screen instructions to uninstall the **Powerline Utility**.

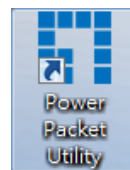
# Chapter 3 – Configuration Utility Setup

## Introduction

The Configuration Utility enables the users to identify HomePlug devices on the powerline network, measures data rate performance, ensures privacy and performs diagnostics by setting user defined secure powerline networks.

The Utility will use a Graphical User Interface (GUI) with limited user selectable options.

## 3.1 Main Tab



In order to start the utility, double-click the utility icon on desktop. Figure 3-1 shows the main screen of the Configuration Utility. The top panel of the screen shot shows a HomePlug AV device connected locally to the host computer. The bottom panel shows four devices connected remotely to the computer running the utility.

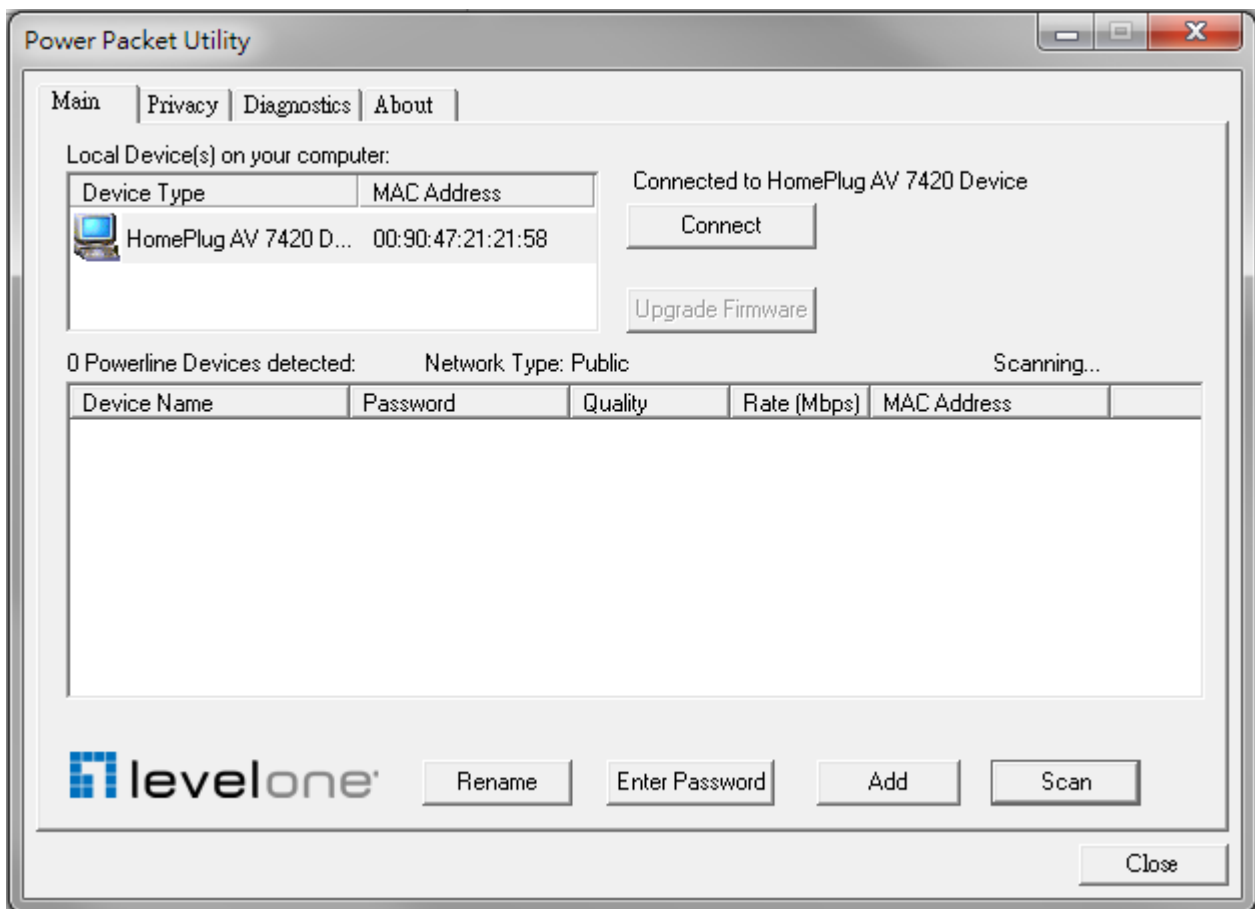
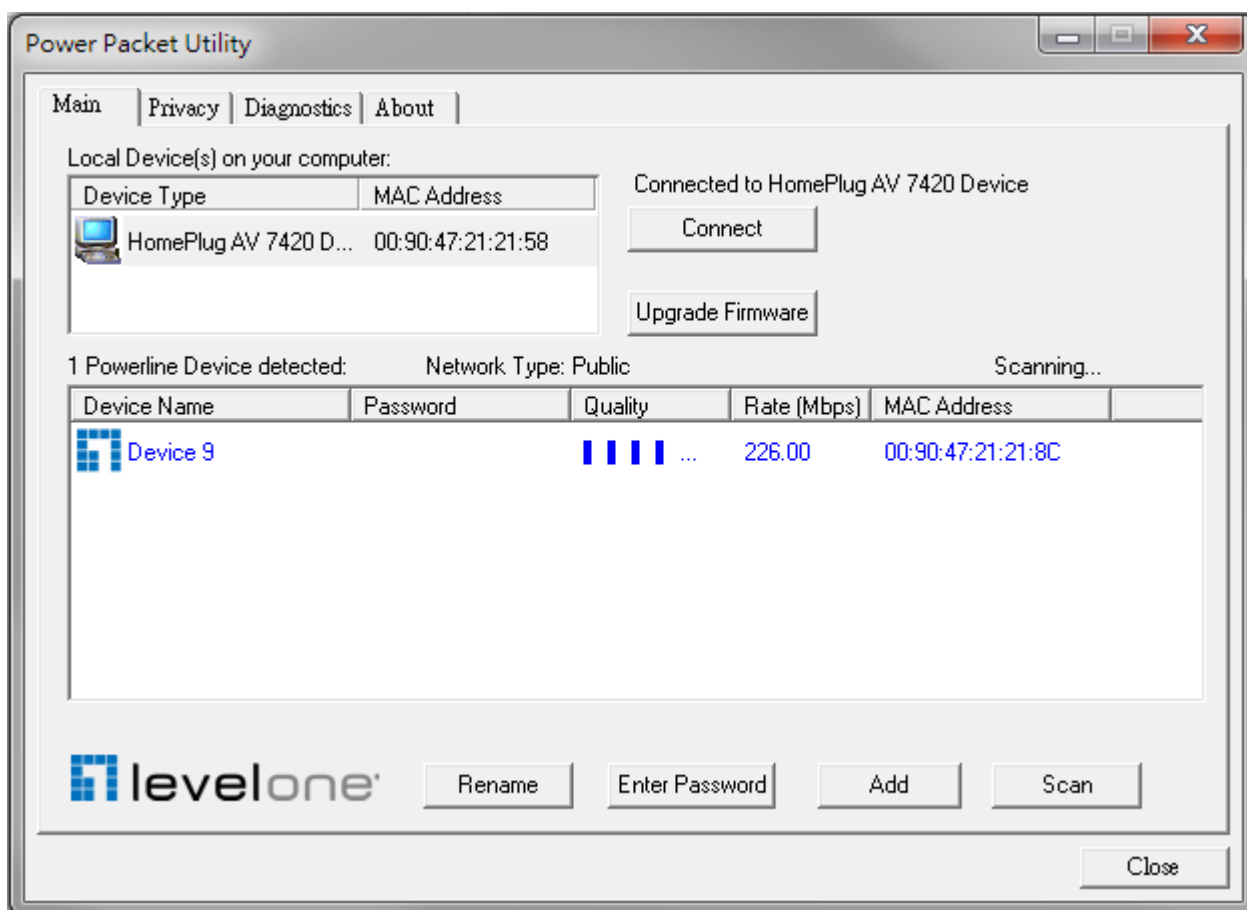


Figure 3-1: Main Screen with HomePlug AV device Local

The **Main** screen provides a list of all powerline devices logically connected to the computer when the utility is running. The **top panel** shows all local HomePlug devices connected to the computer's NIC (Network Interface Card). In most cases, only one device will be seen. In situations where there are more than one local device being connected, such as a USB or an Ethernet adapter, the user can select the local device by clicking on it and then click the **Connect** button to its right. The status area above the button indicates that your PC is connected to that same device. Once connected to the local device, the utility will automatically scan the power line periodically for any other HomePlug devices. If no local HomePlug devices are discovered, the status area above the connect button will indicate with a message 'NO HOMEPLUG ADAPTERS DETECTED'.

Figure 3-2 illustrates the presence of two local devices connected locally to the computer.



**Figure 3-2: Multiple Local Device Connection**

The **lower panel** displays all the HomePlug remote devices, discovered on the current logical network. The total number of remote devices connected on the same network can be found on top of the Remote device panel. The Network type (Public or Private) is also displayed based on the network status of the local device. The scan status option is displayed on the top right corner above the Remote devices panel showing whether the Autoscan functionality is turned ON or OFF. The

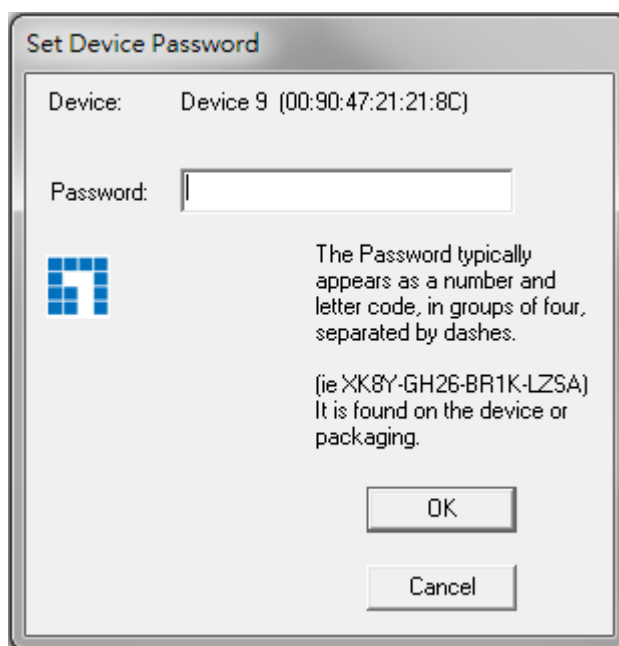
following information is displayed for all devices that appear in the lower panel.

**Device Name** column shows the default device name, which may be user re-defined. A user can change the name by either using the rename button or by clicking on the name and editing in-place. An icon is usually shown with the name. By default, the icon is always accompanied by a device name.

**MAC Address** column shows the Remote device's MAC address.

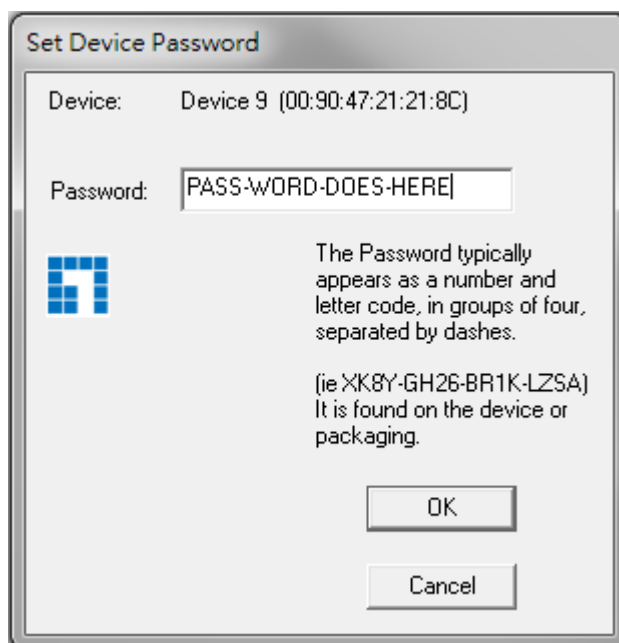
**Password** column by default is blank and 'Enter Password' button can be used to enter it.

To set the **Password** of the device (required when creating a private network), first select the device by clicking on its name in the lower panel and then click on the Enter Password button. A dialog box will appear as shown in Figure 3-3 to type the password. The selected device name is shown above the password field and the password can be verified by hitting the OK button. The Password field accepts the Device password in any case formats, with or without dashed between them. If a device was not found, the user will be notified along with the suggestions to resolve common problems. This process might take a few seconds to get completed.



**Figure 3-3: Set Device Password**

**Add** button is used to add a remote device to the existing network by entering the device password of the device. A dialog box will appear as shown below in Figure 3-4. The dialog box allows the user to enter both a device name and the password. If a device was not found, the user will be notified and suggestions to resolve common problems will be presented.



**Figure 3-4: Add Remote Device**

Note: The device must be present on the power line (plugged in) in order for the password to be confirmed and added to the network. If the device could not be located, a warning message will be shown.

The **Scan** button is used to perform an immediate search of the HomePlug devices connected to the Powerline network. By default, the utility automatically scans every few seconds and updates the display screen.

A typical screen after naming and supplying passwords might appear as in Figure 3-5.

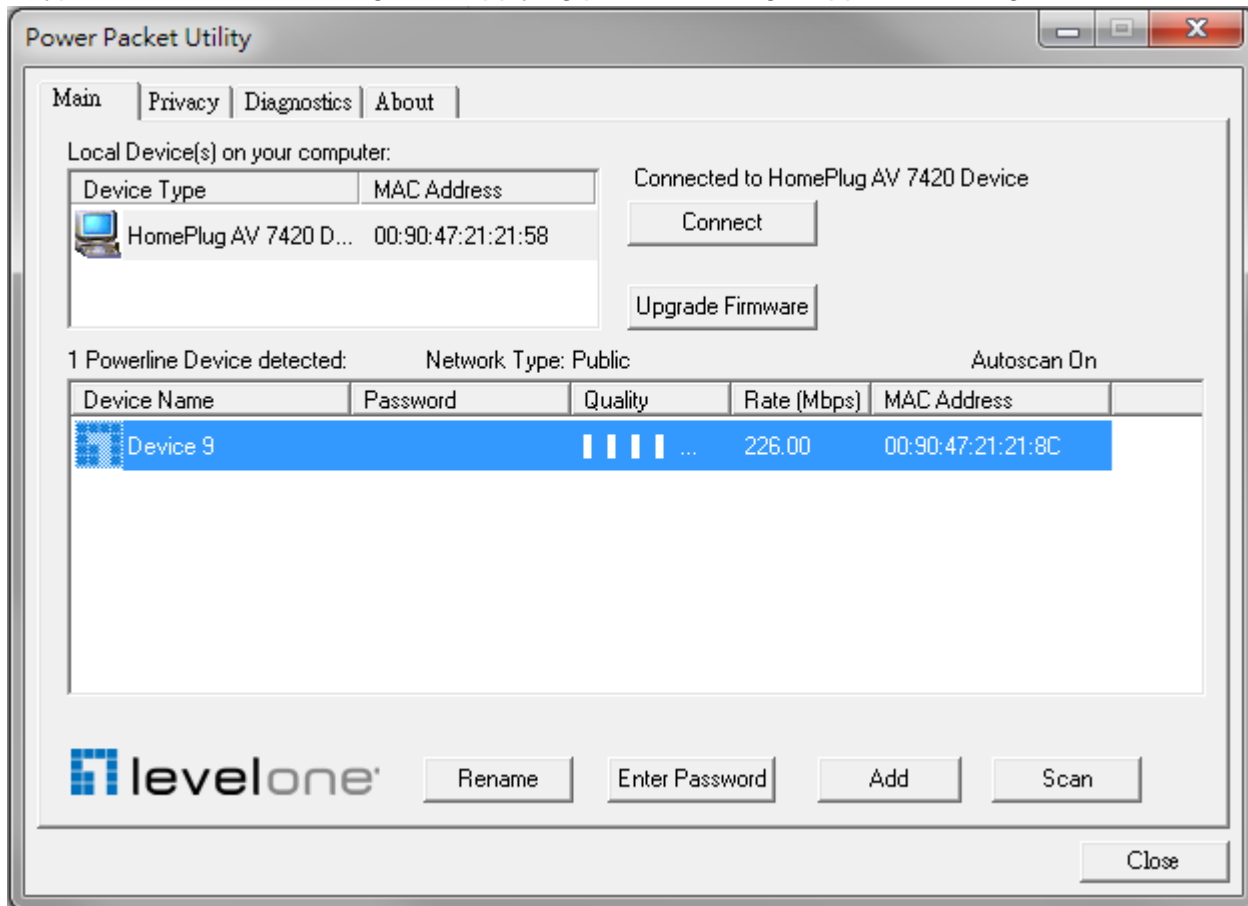


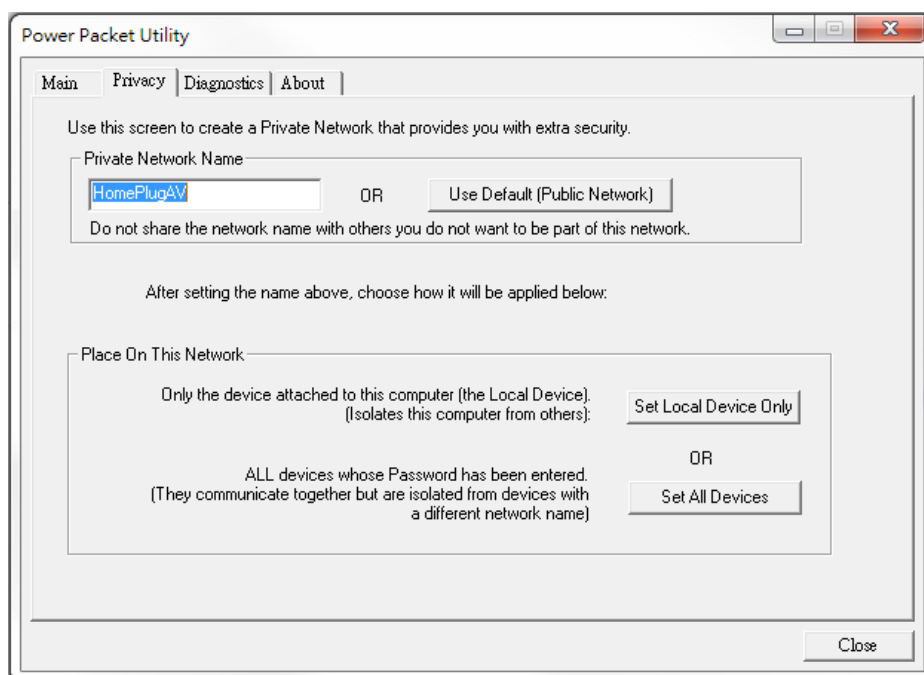
Figure 3-5: Main Screen of the Configuration Utility

### 3.2 Privacy Screen

The Privacy screen provides the user with an option to maintain security for their logical network and also to select the devices that has to be included in the network. The appearance is shown in Figure 3-6. All HomePlug devices are shipped using a default logical network (network name), which is normally “**HomePlugAV**”. The Privacy dialog screen allows user to change to a private network by changing the network name (network password) of devices.

The user can always reset to the HomePlug network (Public) by entering “**HomePlugAV**” as the network name or by clicking on the “**Use Default**” button.

**Note:** Changing the network name to anything other than HomePlugAV will show the network type on the main screen as Private.



**Figure 3-6: Privacy Screen**

The **Set Local Device Only** button can be used to change the network name (network password) of the local device. If a new network password is entered, all the devices seen on the Main panel prior to this will be no longer present in the new network, effectively making the local devices not to communicate to the devices who were in the old logical network. Devices previously set up with the same logical network (same network name) will appear in the device list afterward selecting this option.

The **Set All Devices** button is used to change the logical network of all devices that appear on the Main panel whose Device’s Password had been entered for the same logical network. A dialog window will appear to report the success of this operation. For devices whose device password’s were not entered, this operation will fail and will report a failure message.

### 3.3 Diagnostics Screen

The **Diagnostics** screen shows System information and a history of all remote devices seen over a period of time. The appearance is shown in Figure 3-7.

The **Upper panel** shows technical data concerning software and hardware present on the host computer which were used to communicate over HomePlug on the Powerline network. It shall include the following:

- Operating System Platform/Version
- Host Network Name
- User Name
- MAC Address of all NICs (Network interface card) connected to the host
- Identify versions of all Driver DLLs and Libraries used (NDIS) and optionally
- HomePlug chipset manufacturer name
- MAC Firmware Version
- MAC addresses of all devices connected locally to the host
- Version of the Configuration Utility
- Vendor name

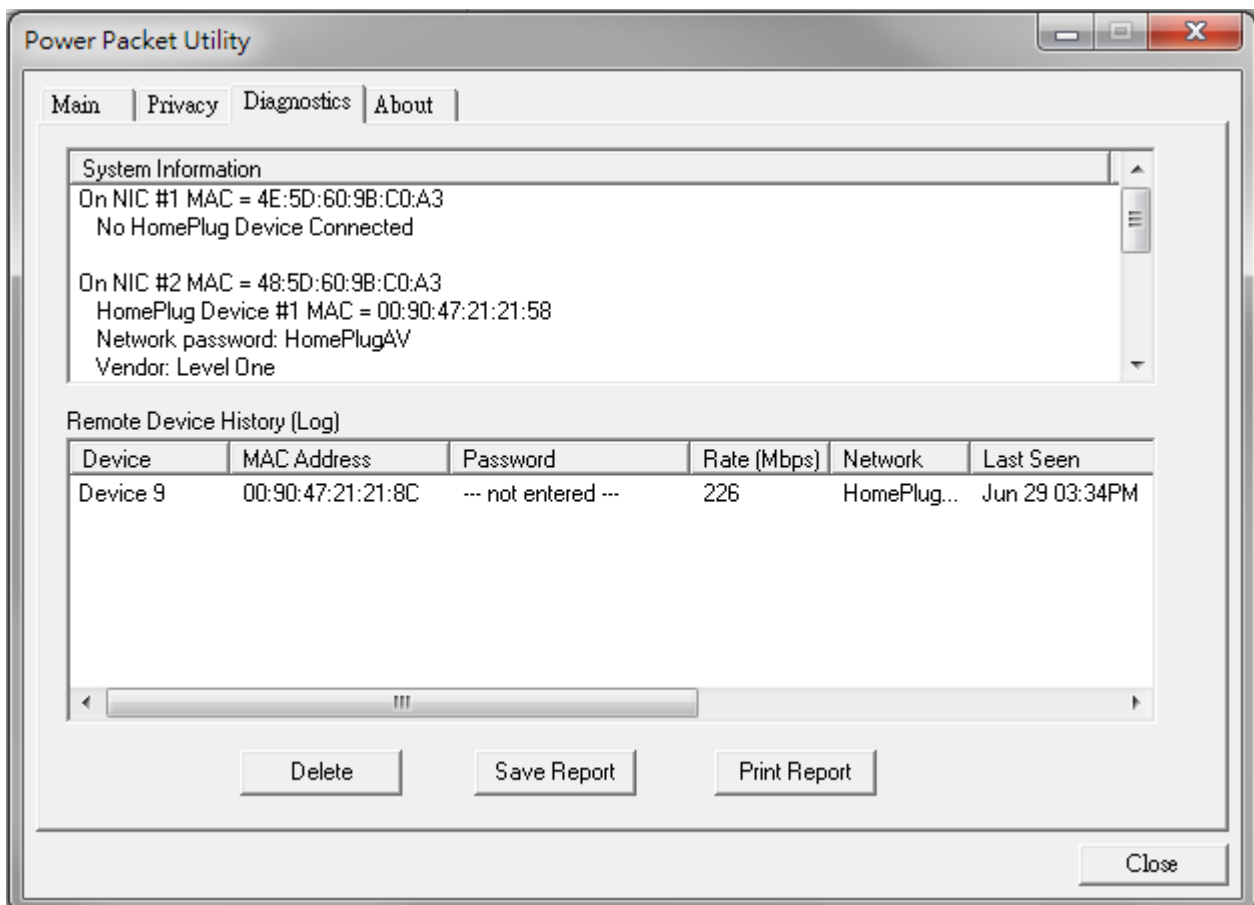


Figure 3-7: Diagnostics Screen



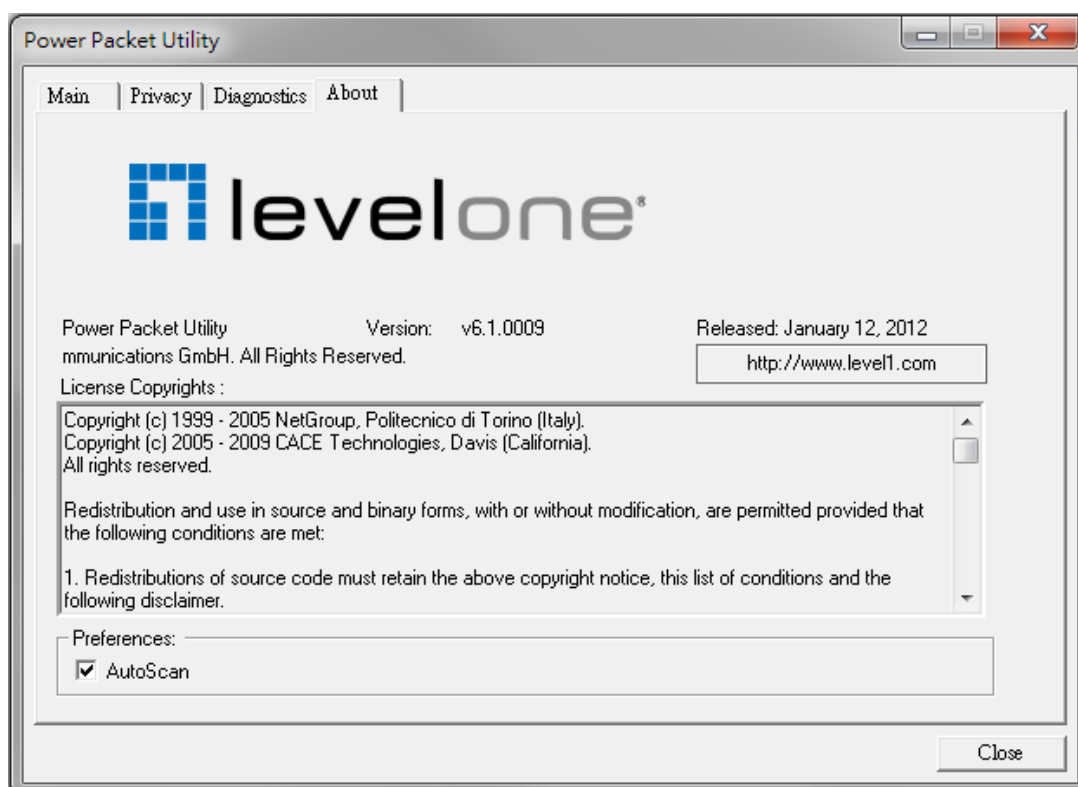
The **Lower panel** contains a history of all remote devices seen on the computer over a certain period of time. All devices that were on the powerline network are listed here along with a few other parameters. Devices that are active on the current logical network will show a transfer rate in the Rate column; devices on other networks, or devices that may no longer exist are shown with a “?” in the Rate column. The following remote device information is available from the diagnostics screen:

- Device Alias Name
- Device MAC Address
- Device Password
- Device Last known rate
- Device Last Known Network name
- HomePlug chipset manufacturer name
- Date device last seen on the network
- MAC Firmware Version.

The diagnostics information displayed may be saved to a text file for later use, or can be printed for reference for a technical support call. Devices, which are not part of the network anymore, can be deleted using the delete button. A dialog window pops up with a confirmation message if we try to delete a device whose password has been entered.

### 3.4 About Screen

The **About** screen shows the software version.



**Figure 3-8: About dialog screen**

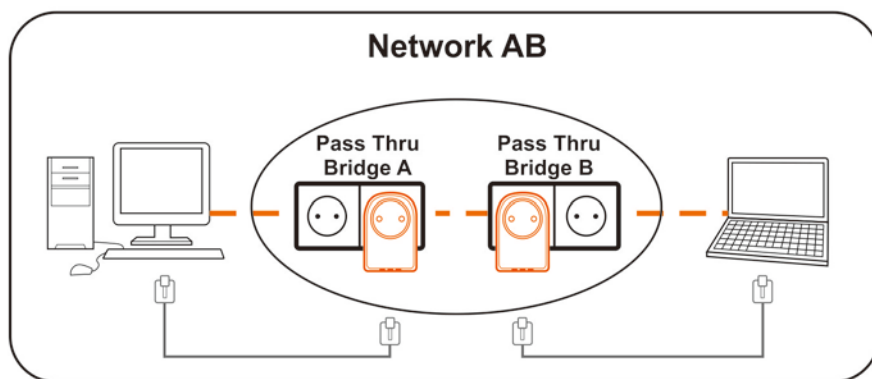
## Chapter 4 – Individual HomePlug AV Network Setup(Optional)

All HomePlug AV 500Mbps nano Pass Thru ship with a default security key so they will automatically link to all other HomePlug AV 500Mbps nano Pass Thru or Ethernet Bridges sharing the same electrical lines. If there are other HomePlug AV 500Mbps nano Pass Thru or Ethernet Bridges in the building (such as in an office or apartment building), you may want to create your own individual HomePlug AV network group so other HomePlug AV Ethernet Bridges cannot connect to your network.

This section describes how to use the Security button for configuration in the following situations:

### 4.1 Creating a new individual HomePlug AV(networkAB)

Two unassociated Bridges (**Bridge A** and **Bridge B**) are forming a new network—Network AB

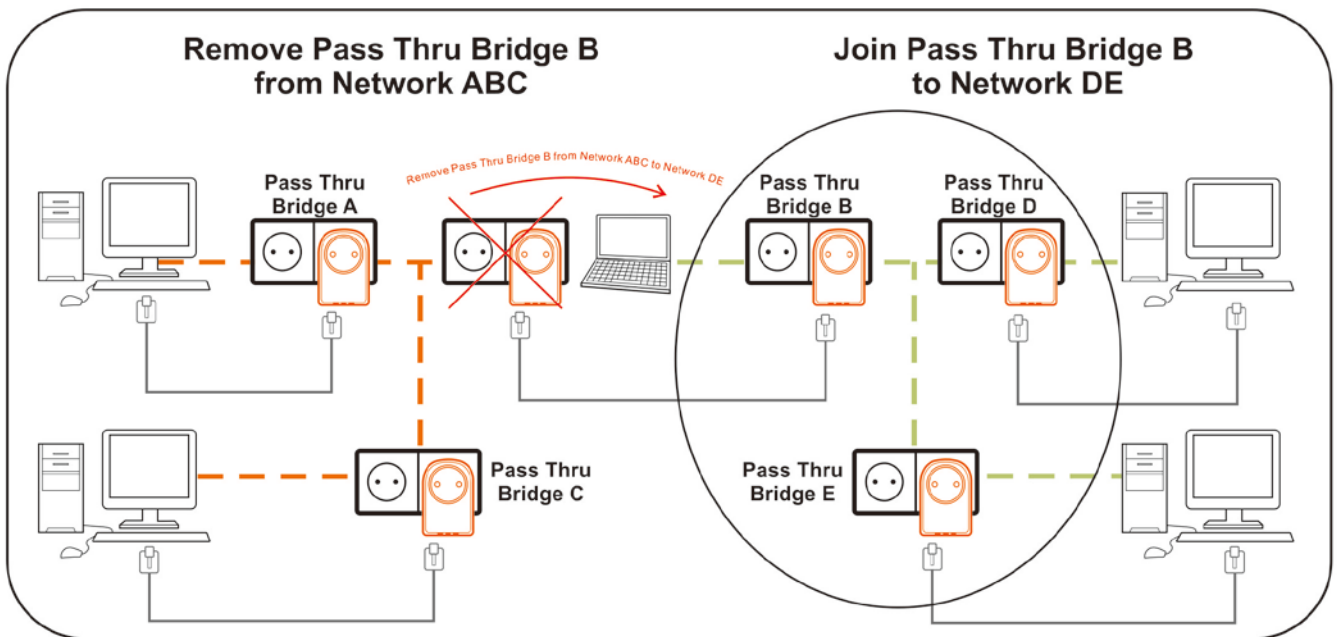


The procedure is as follows:

1. Press and hold the Security button on *Bridge A* for no more than 10 seconds. Must release after 10 seconds. Once released, the Power light will flash.  
The password to *Bridge A* has just been erased and random security key has been generated. It must now be linked to your network to adopt the new network security key.
2. Press and hold the security button on *Bridge B* for 10 seconds and release it when the Power light flashes.  
The password to *Bridge B* has just been erased and random security key has been generated. It must now be linked to your network to adopt the new network security key.
3. Currently, *Bridge A* and *Bridge B* are not networked
4. Press and hold the Security button on *Bridge A* for 1~3 seconds then release.
5. The Power light on *Bridge A* starts to flash.
6. Within 120 seconds after the Power light on *Bridge A* starts to flash, press and hold the Security button on *Bridge B* for 1~3 seconds then release.
7. Both *Bridge A* and *Bridge B* are now networked together.

## 4.2 Adding Bridge C to existing Network AB (Network ABC)

One unassociated **Bridge C** is added to an existing Network AB.



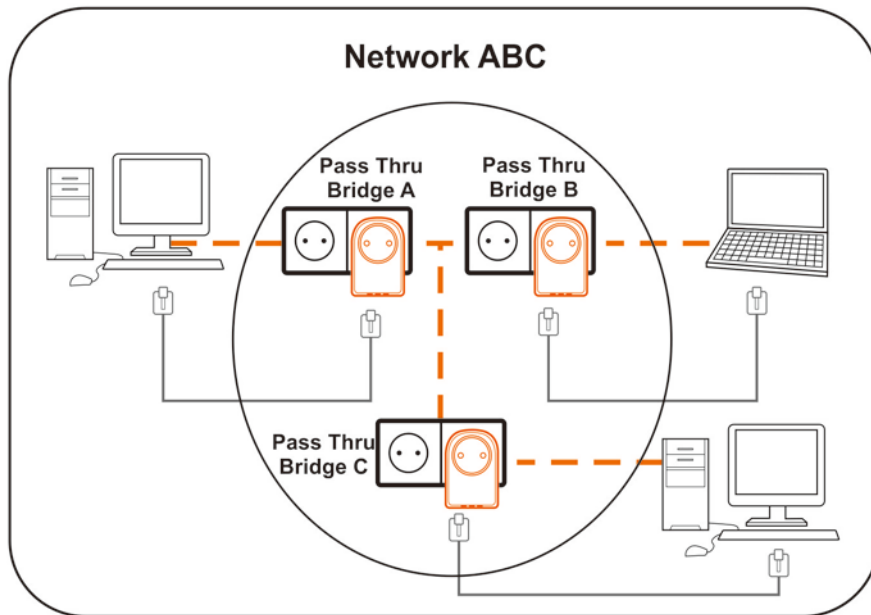
The procedure is as follows:

1. Press and hold the Security button on *Bridge C* for no more than 10 seconds. Must release after 10 seconds. Once released, the Power light will flash.

The password to *Bridge C* has just been erased and random security key has been generated. It must now be linked to your network to adopt the new network security key.

2. Press and hold the security button on *Bridge A* for 1~3 seconds. The Power light on *Bridge A* starts to flash.
3. Within 120 seconds after the Power light on *Bridge A* starts to flash, press and hold the security button on *Bridge C* for 1~3 seconds then release.
4. *Bridge A*, *Bridge B* and *Bridge C* are now networked to each other.

### 4.3 Removing Bridge B from Bridge A & C Network and join with Bridge D & E (Network BDE)



The procedure is as follows:

1. Press and hold the Security button on *Bridge B* for no more than 10 seconds. Must release after 10 seconds. Once released, the Power light will flash.  
The password to *Bridge B* has just been erased and removes itself from *Bridge A & C*.
2. Press and hold the Security button on *Bridge D* for 1~3 seconds.
3. Within 120 seconds after the Power light on *Bridge D* starts to flash, press and hold the Security button on *Bridge B* for 1~3 seconds then release.
4. *Bridge B* and *Bridge D* are now connected to each other, which in turn becomes part of Network BDE.

## 4.4 Troubleshooting

If your HomePlug AV 500Mbps nano Pass Thru have difficulty communicating with each other, check the following:

- Try power cycling the unit by unplugging it from the wall for 10 seconds and plugging it in again.
- Hold the security/reset button down for more than 15 seconds to reset to default setting. The HomePlug AV 500Mbps nano Pass Thru's light will flash, the units will reset and attempt to link using default factory settings.
- Try plugging the HomePlug AV 500Mbps nano Pass Thru into an adjacent plug.
- HomePlug AV 500Mbps nano Pass Thru work better when plugged directly into the wall outlet. Connecting these Pass Thru units or Ethernet Bridges to a power strip or surge protector may degrade network performance or completely stop network signals.
- This HomePlug AV 500Mbps nano Pass Thru should not be used on GFI protected outlets as some outlets will filter out HomePlug Powerline signal.
- This HomePlug AV 500Mbps nano Pass Thru should not be used in areas with excessive heat.
- Certain florescent or incandescent lights are noise sources on the electrical and can degrade performance.
- If your building has more than one circuit breaker box, your HomePlug AV 500Mbps nano Pass Thru may not be able to connect between the different circuit breaker boxes. In this case, connect one HomePlug AV 500Mbps nano Pass Thru or Ethernet Bridge to a power outlet located on each of the circuit boxes. Connect Ethernet cable between each of HomePlug AV 500Mbps nano Pass Thru or Ethernet Bridge to link the different circuits together. This will allow the HomePlug AV 500Mbps nano Pass Thru from different circuit breaker boxes to connect.
- To enter standby mode for this device, simply remove the Ethernet cable and wait about 3 minutes.

