



# LevelOne

## User Manual

USB-0301

**USB Fast Ethernet Adapter**

Ver. 1.0



## **ABOUT THIS MANUAL**

This manual provides a beginner's introduction to installing, configuring and using the USB2.0 Ethernet Adapter . Information in this document has been carefully checked for accuracy; however, no guarantee is given to the correctness of the contents. The information in this document is subject to change without notice. The manufacturer makes no representations or warranties, either expressed or implied, with respect to the contents hereof and specifically disclaims any warranties, merchantability, or fitness for any particular purpose.

## **SAFETY INSTRUCTIONS**

Always read the safety instructions carefully:

- Keep this User's Manual for future reference
- Keep this equipment away from humidity
- If any of the following situation arises, get the equipment checked by a service technician:
  - The equipment has been exposed to moisture.
  - The equipment has been dropped and damaged.
  - The equipment has obvious sign of breakage.
  - The equipment has not been working well or you cannot get it to work according to the User's Manual.

## **COPYRIGHT**

This document contains proprietary information protected by copyright. All rights are reserved. No part of this publication or documentation accompanying this product may be reproduced in any form or by any means or used to make any derivative such as translation, transformation, or adaptation without permission of the manufacturer.

## **TRADEMARKS**

All trademarks and registered trademarks are the property of their respective owners or companies.

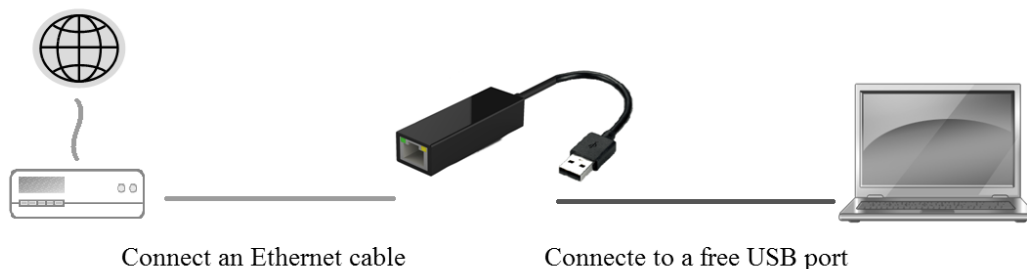
# Table of Contents

<b>1. Introduction .....</b>	<b>3</b>
Features .....	3
System Requirements.....	4
Package Contents .....	4
LED Status .....	4
<b>2. Installation .....</b>	<b>5</b>
Driver installation .....	5
On Windows® Operating Systems .....	5
On Mac® Operating Systems .....	7
Hardware installation .....	9
Verifying the Driver Installation .....	9
on Windows® Operating Systems .....	9
on Mac® Operating Systems .....	10
<b>3. Uninstalling the Driver .....</b>	<b>11</b>
Uninstalling the Driver.....	11
on Windows® Operating Systems .....	11
on Mac® Operating Systems .....	12
<b>4. Specifications .....</b>	<b>13</b>
<b>5. Regulatory Compliance .....</b>	<b>15</b>
FCC Statement.....	15
CE .....	15
WEEE Information .....	15

# 1. Introduction

The USB2.0 Ethernet adapter design with small form factor, and simple plug-and-play Fast Ethernet network connection capability ,It is the easiest solution to enable your computer with network capability through an available USB 2.0 port without going through the hassles to install a network card. for desktops, notebook PC's, Ultra-Mobile PC's, docking stations ,digital-home appliances, and any embedded system using a standard USB port.

The USB2.0 Ethernet adapter implements a 10/100Mbps Ethernet LAN function based on IEEE802.3, and IEEE802.3u standards. The USB 2.0 Fast Ethernet Adapter is also compliant with USB Specification, Revision 2.0. It is fully compatible with a wide variety of Windows® operating systems



## Features

- Compliant with USB 2.0 and USB 1.1 specifications
- IEEE 802.3 10BASE-T/100BASE-TX compatible
- IEEE 802.3 100BASE-FX compatible
- Supports twisted pair crossover detection and auto-correction (HP Auto-MDIX)
- Supports IPv4/ IPv6 packet Checksum Offload Engine(COE) to reduce CPU loading
- Supports full duplex operation with IEEE 802.3x flow control and half duplex operation with back-pressure flow control
- Support Wake-on-LAN Function via Link-change, Magic packet, MS wakeup frame
- Supports dynamic power management to reduce power dissipation during idle or light traffic

## System Requirements

- One available USB port
- Windows® XP, Windows® 7, Windows® 8; Mac® OS X 10.5 and later

## Package Contents

Before installation, please check the items of the package. The package should contain the following items:

- USB 2.0 Ethernet Adapter x1
- CD with Driver x1
- Quick Installation Guide x1

## LED Status

LED	Color	Description
Status	Green	Blinking: LAN activity. , when there is data flow between LAN and the host computer.
Link	Amber	On for connection to a 100Mbps network. Off for connection to a 10Mbps network.

## 2. Installation

### Driver installation

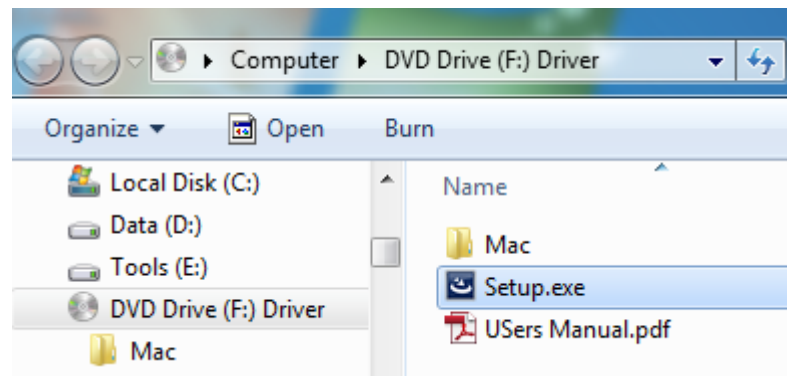
#### On Windows® Operating Systems

---

**Caution: DO NOT** connect the Ethernet Adapter to your computer before you install the provided driver.

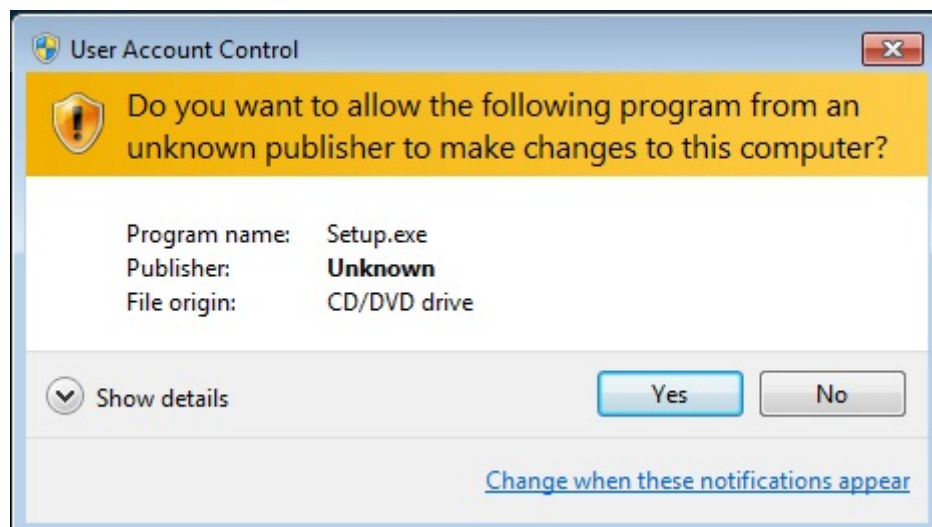
---

1. Insert the provided Driver CD into your disc drive. Please locate and double-click the **[setup.exe]** file under **[x:\ ]** where x is your disc drive letter.

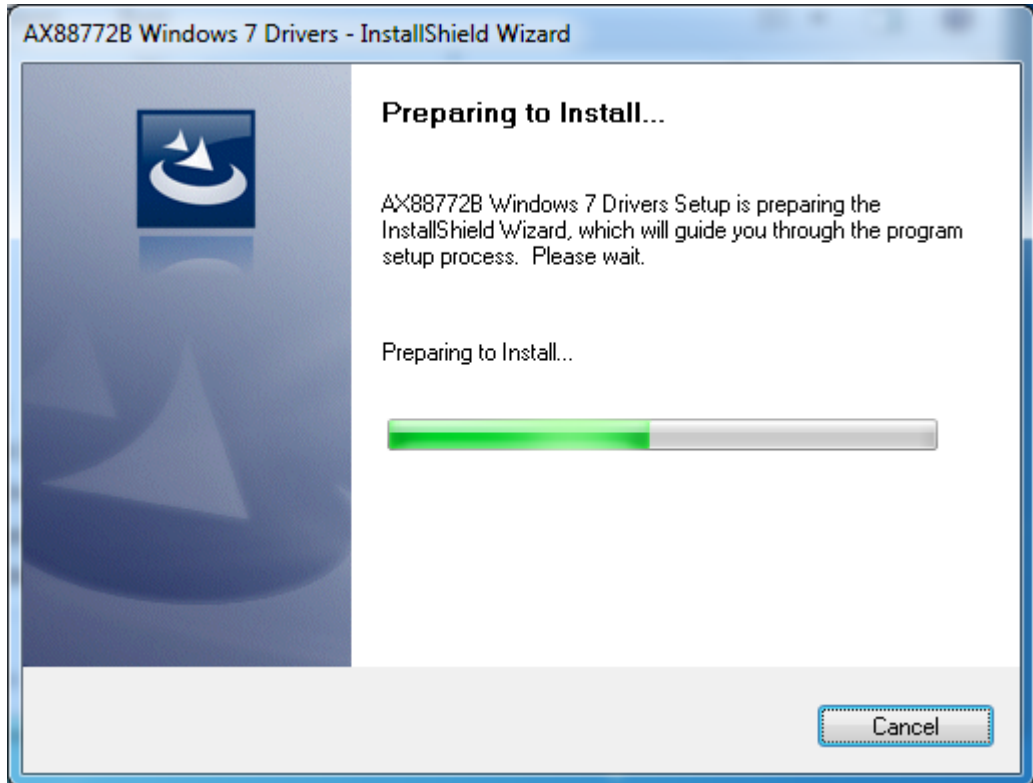


Notice :

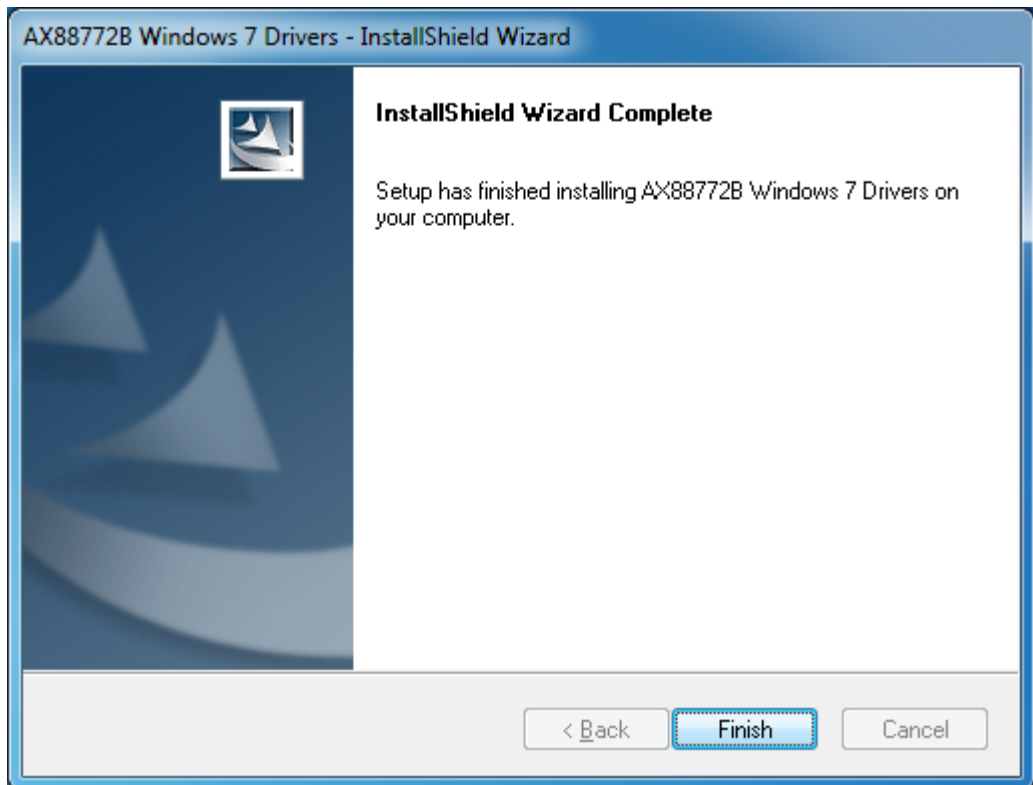
It will encounter a **User Account Control** dialog box when attempting to install a program, please click **Yes** to start the installation.



2. Click on **[Install]** to execute this installation.



3. When the installation is done, click **[Finish]**.



\*Notice: You may need to restart system after finishing the installation.

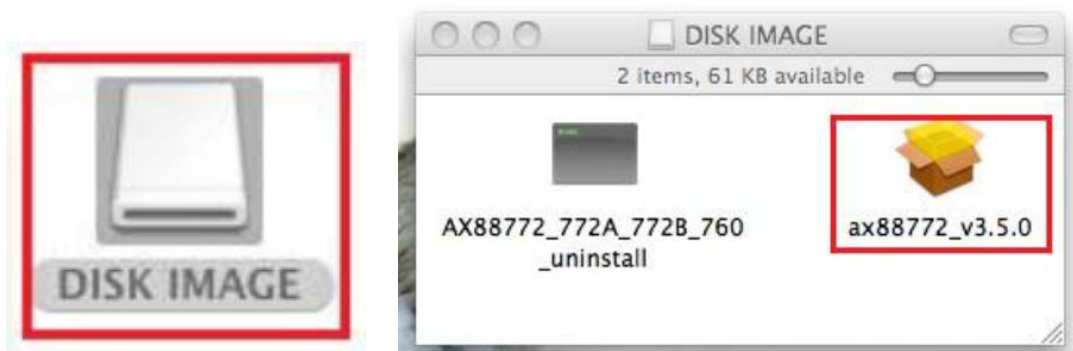


## On Mac® Operating Systems

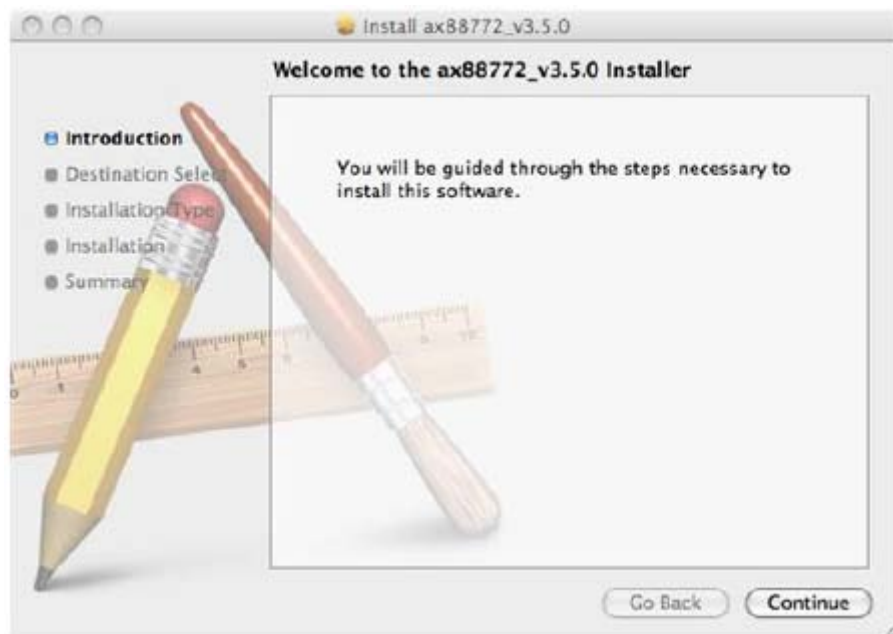
1. Insert the provided driver CD into your CD-ROM drive. Double-click the CD and navigate to the directory of [DriverMac]



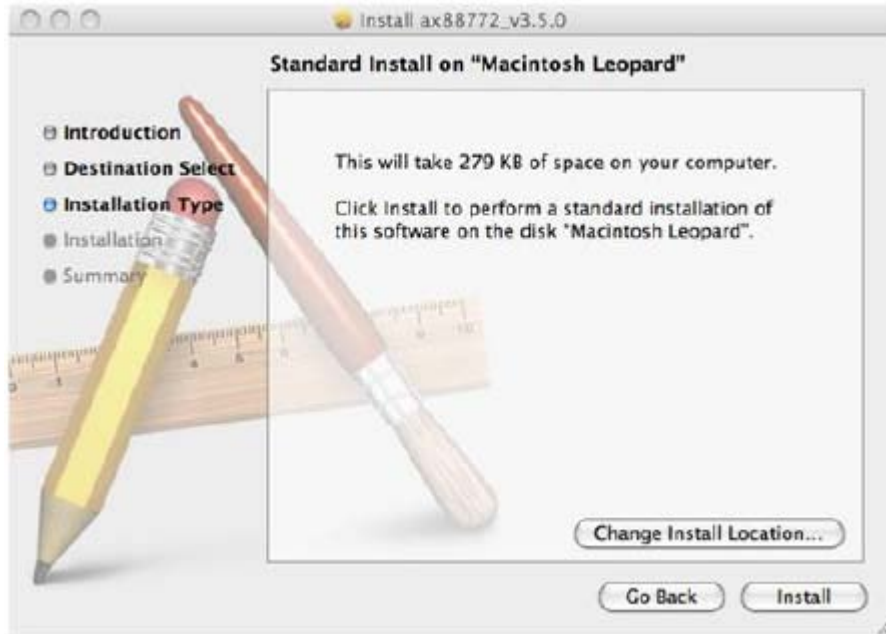
2. Click the [AX88772.dmg], the following [DISK IMAGE] virtual disk will be appeared on the Desktop of your Mac OSX system. (This "DISK IMAGE" virtual disk will be auto-removed after rebooting Mac OSX system.)



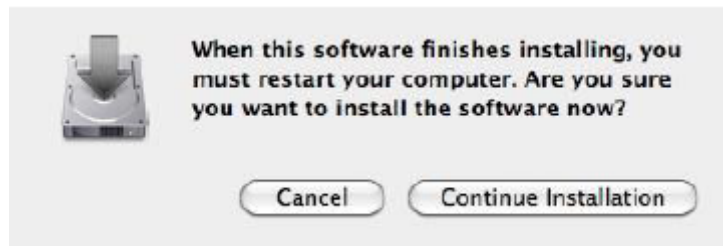
3. Click the [AX88772\_v3.5.0.pkg], the following driver setup dialog will appear. Click the [Continue] button to start the installation operation and follow the instructions to continue the installation.



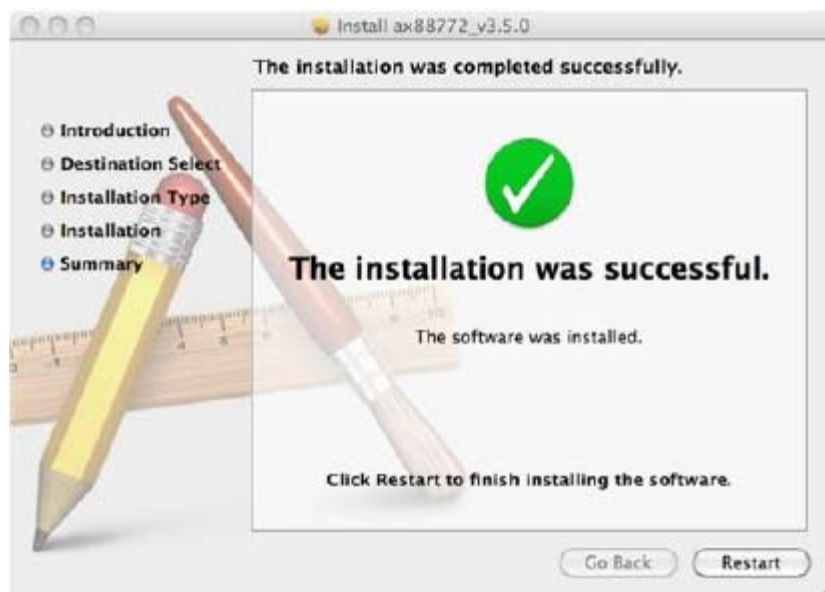
4. Click the **[Install]** button to continue the installation operation.



5. Click the **[Continue Installation]** button to continue the installation operation.



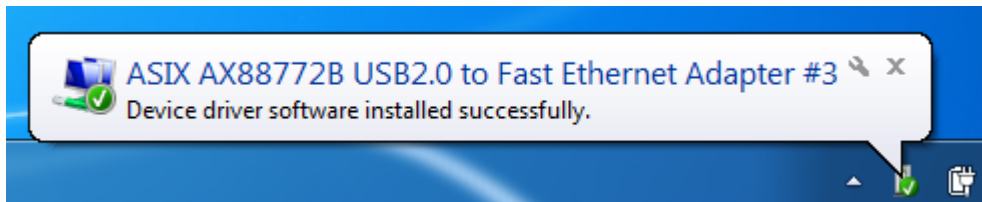
6. Click the **[Restart]** button to restart Mac OS X system to take effect the revised driver installation.



Now the installation is complete. You can connect the adapter to a network device by an Ethernet cable:

## Hardware installation

1. Connect the Ethernet adapters USB end to a free USB port of your computer. Then a pop-up message will appear in the notification area indicating the installation is complete.



\* Actual strings depend on your operation system. These screen shots are from Windows<sup>®</sup>7 and might vary slightly for each operation system.

2. Connect an Ethernet cable to the Ethernet port on the adapter.
3. Connect the other end of the Ethernet cable to your network hub, switch or router.

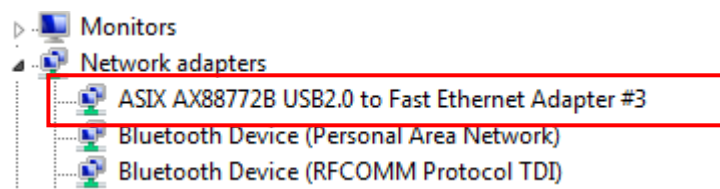
## Verifying the Driver Installation

### on Windows<sup>®</sup> Operating Systems

Once you finish the installation, you can open Windows<sup>®</sup> **Device Manager** to verify if your Ethernet Adapter is properly installed. To access the **Device Manager**:

- On Windows<sup>®</sup> 7: Right-click **Computer** on the desktop and click **System Properties>Device Manager**
- On Windows<sup>®</sup> XP: Right-click **My Computer** on the desktop and click **Properties > (Hardware) > Device Manager**.

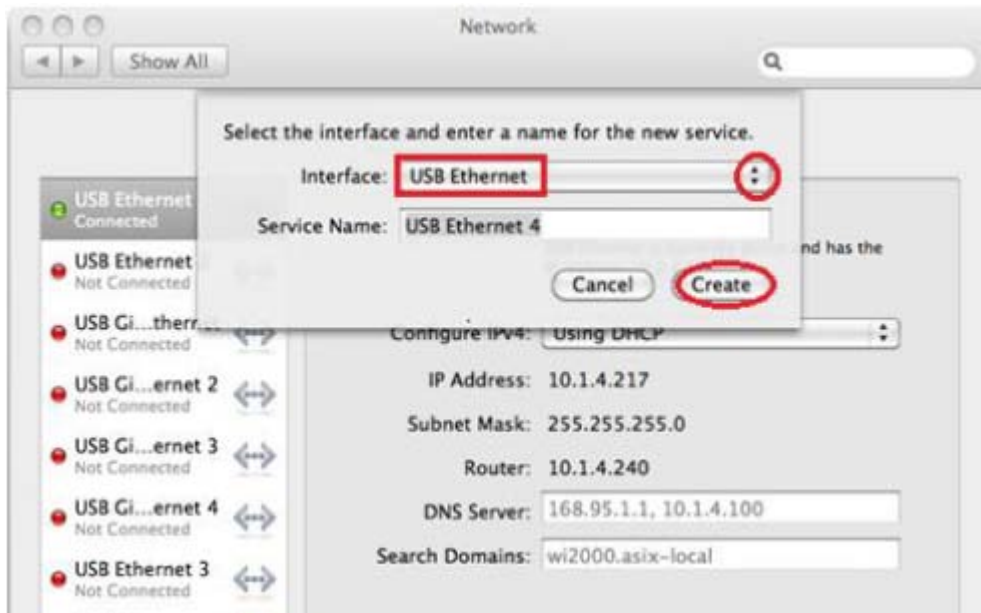
In the **Network adapters** group, an item named **ASIX AX88772B USB2.0 to Fast Ethernet Adapter** should be displayed.



If there is a question or exclamation mark next to that item, then the driver is not properly installed. Please delete the item, select the **Delete the driver software for this device** option (if provided), unplug the adapter from your computer and then repeat the installation steps.

## on Mac® Operating Systems

After booting up your Mac OPERATING SYSTEMSX system, plug USB dongle onto the USB port of your Mac OPERATING SYSTEMSX system and refer to below figure to add a new “USB Ethernet” network interface and then press the [Apply] button to take effect the new network interface..



Also navigate to **System Preference>Network**, please click on **Renew DHCP Lease** and **Apply Now** as following to verify the installation of driver and Ethernet Adapter.



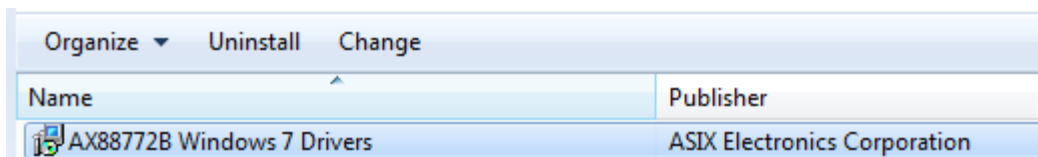
## 3. Uninstalling the Driver

### Uninstalling the Driver

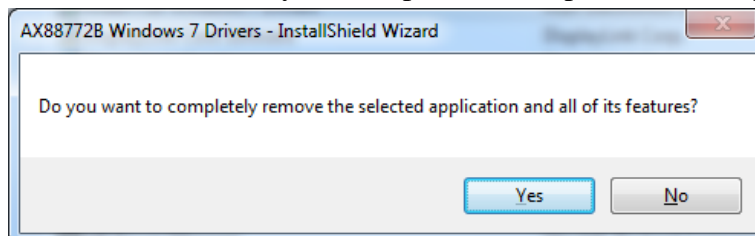
#### on Windows® Operating Systems

Please take these steps to uninstall Driver:

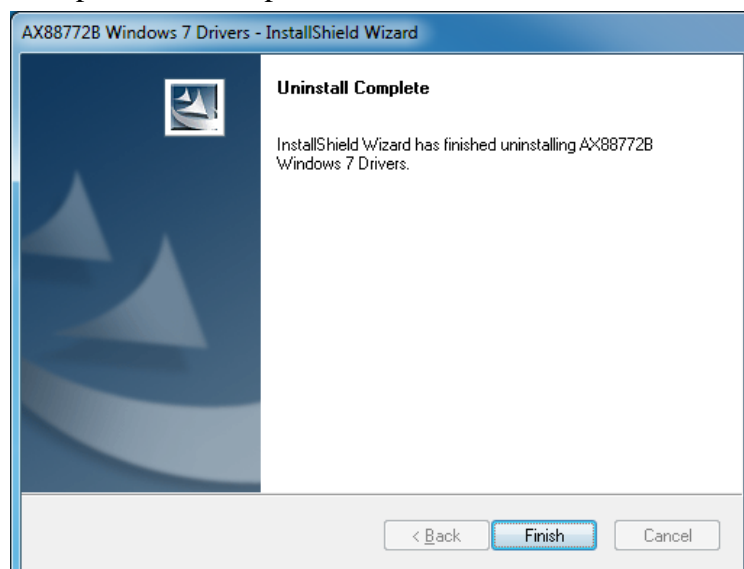
1. Open the **Control Panel, Programs and Features** and double-click **Uninstall a Program** on Vista/ 7 or **Add or Remove Programs** on XP.
2. Select [**AX88772B**] and click **Uninstall** or **Remove**



3. The uninstall process automatically.
4. Select **Yes** and click **Finish** to restart your computer to complete uninstall process.

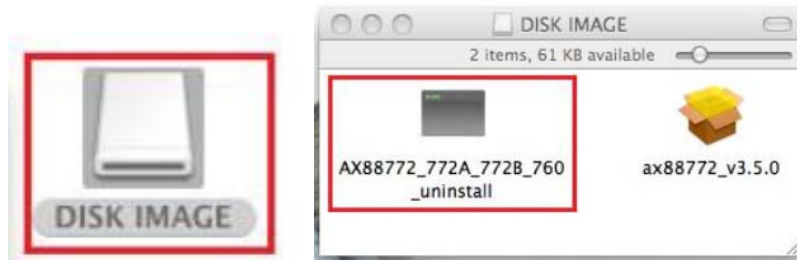


5. Click [**Finish**] to complete uninstall process.



## on Mac® Operating Systems

1. Click the “AX88772.dmg”, the following “DISK IMAGE” virtual disk will be appeared on the Desktop of your Mac OSX system. (This “DISK IMAGE” virtual disk will be auto-removed after rebooting Mac OSX system.)



2. Click the “AX88772\_772A\_772B\_760\_uninstall” script file to uninstall ASIX’s AX88772B/772A/760/772 Mac OSX driver.

Situation 1: If the AX88772B USB dongle was installed, you will see below messages.

```
Terminal — 80x24
Last login: Thu Oct 13 14:04:02 on console
/Volumes/DISK\ IMAGE/AX88772_772A_772B_760_uninstall ; exit;
asix-testde-macbook:~ test$ /Volumes/DISK\ IMAGE/AX88772_772A_772B_760_uninstall
; exit;
Password:
logout

[Process completed]
```

Situation 2: If the AX88772B/772A/760/772 USB dongle was not installed, you will see below messages but the driver un-installation can still be completed successfully.

```
Terminal — 80x24
Last login: Thu Oct 13 13:35:16 on ttys000
asix-testde-macbook:~ test$ /Volumes/DISK\ IMAGE\ 1/AX88772_772A_772B_760_uninst
all ; exit;
Password:
(kernel) Kext com.apple.driver.AppleUSBEthernet not found for unload request.
Failed to unload com.apple.driver.AppleUSBEthernet - (libkern/kext) not found.
logout

[Process completed]
```

# 4. Specifications

General	
Host Interface	USB 2.0 (1.1 compliant)
Operating System Support	<ul style="list-style-type: none"> <li>● Windows® XP, Windows® 7, Windows® 8</li> <li>● Mac® OS10.5 and later.</li> </ul>
Ports and Connectors	
Upstream	1 x Upstream USB Standard Type A plug
Ethernet	1 x Ethernet Port (RJ-45 connector)
LED	
Link LED (Amber)	<ul style="list-style-type: none"> <li>● On: When connection to a 100Mbps network</li> <li>● Off: When connection to a 10Mbps network</li> </ul>
Status LED (Green)	<ul style="list-style-type: none"> <li>● On/Blinking: LAN activity.</li> <li>● Off: No network traffic.</li> </ul>
Power	
Power Mode	USB Bus -powered
Power Consumption	<ul style="list-style-type: none"> <li>● Operating Mode: 250 mA</li> <li>● Suspend Mode : 5 mA</li> </ul>
Physical Specifications	
Housing Material	ABS (Plastic)
Dimensions	<ul style="list-style-type: none"> <li>● Main body without cable: 65 mm (L) x 23 mm(W)x 15 mm (H)</li> <li>● Main body with cable: 75 mm (L) x 23 mm(W)x 15 mm (H)</li> </ul>
Weight	Approximately 43 g (including cable)
Environmental Specifications	
Operating Temperature	10-40°C
Storage Temperature	-10~80°C

<b>Relative Humidity</b>	< 85% non-condensing
<b>Regulatory Compliances</b>	
<b>Safety, EMI</b>	FCC, CE
<b>RoHS</b>	RoHS compliant

\* Specification is subject to change without further notice.



# 5. Regulatory Compliance

## FCC Statement

This device complies with Part 15 of the FCC Rules. Operation is subject to the following two conditions:

- (1) This device may not cause harmful interference, and
- (2) this device must accept any interference received, including interference that may cause undesired operation.

FCC Caution:

Any changes or modifications not expressly approved by the party responsible for compliance could void the user's authority to operate this equipment.

## CE

This device complies with the following regulations:

EN 55 022: CLASS B

## WEEE Information

For EU (European Union) member users:

According to the WEEE (Waste electrical and electronic equipment) Directive, do not dispose of this product as household waste or commercial waste. Waste electrical and electronic equipment should be appropriately collected and recycled as required by practices established for your country. For information on recycling of this product, please contact your local authorities, your household waste disposal service or the shop where you purchased the product.

