



LevelOne

WAP - 0005

802.11g/802.11b PoE Access Point

Quick Install Guide

1. Introduction

Package Contents

The following items should be included:

1. Wireless Access Point 2. Power Adapter 3. Quick Start Guide 4. CD-ROM



If any of the above items are damaged or missing, please contact your dealer immediately.

Physical Details

Front Panel LEDs

Status	On - Error condition. Off - Normal operation. Blinking - This LED blinks during start up, or when the Firmware is being upgraded.
Power	On - Normal operation. Off - No power
LAN	On - The LAN (Ethernet) port is active. Off - No active connection on the LAN (Ethernet) port. Flashing - Data is being transmitted or received via the corresponding LAN (Ethernet) port.
Wireless LAN	On - Idle. Off - Error- Wireless connection is not available. Flashing - Data is being transmitted or received via the Wireless access point. Data includes "network traffic" as well as user data.

Rear Panel

Antenna	One antenna (aerial) is supplied. Best results are usually obtained with the antenna in a vertical position.
Reset Button	<p>This button has two (2) functions:</p> <p>Reboot. When pressed and released, the Wireless Access Point will reboot (restart).</p> <p>Reset to Factory Defaults. This button can also be used to clear ALL data and restore ALL settings to the factory default values, as follows:</p> <ol style="list-style-type: none">1. Power Off the Access Point.2. Hold the Reset Button down while you Power On the Access Point.3. Continue holding the Reset Button until the Status (Red) LED blinks TWICE.4. Release the Reset Button. <p>The factory default configuration has now been restored, and the Access Point is ready for use.</p>
Ethernet	Use a standard LAN cable (RJ45 connectors) to connect this port to a 10BaseT or 100BaseT hub on your LAN.
Power port	Connect the supplied power adapter here.

2. Installation



1. Select a suitable location for the installation of your Wireless Access Point. To maximize reliability and performance, follow these guidelines:
 - Use an elevated location, such as wall mounted or on the top of a cubicle.
 - Place the Wireless Access Point near the center of your wireless coverage area.
 - If possible, ensure there are no thick walls or metal shielding between the Wireless Access Point and Wireless stations.
2. Use a standard LAN cable to connect the “Ethernet” port on the Wireless Access Point to a 10/100BaseT hub on your LAN.
3. Connect the supplied power adapter to the Wireless Access Point and a convenient power outlet, and power up.

Note:

To use PoE (Power over Ethernet), the **WAP – 0005** should be connected as shown below, rather than using steps 2 and 3 above.

Please be noted that PoE Adapter is not included in package.



4. Check the LEDs:

- The **Status** LED should flash, then turn OFF.
- The **Power**, **Wireless LAN**, and **LAN** LEDs should be ON.

3. Access Point Setup

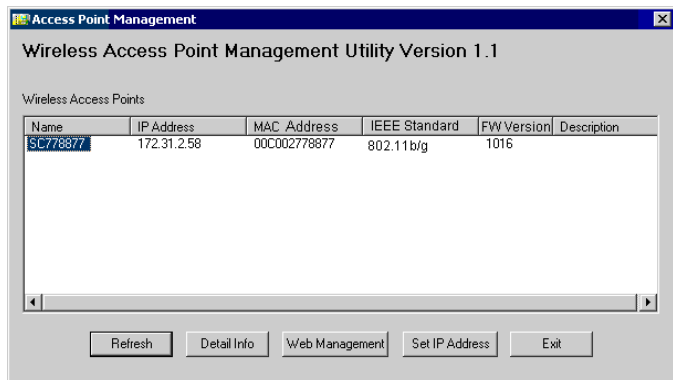
A simple Windows setup utility is supplied on the CD-ROM. This utility can be used to assign a suitable IP address to the Wireless Access Point. Using this utility is recommended, because it can locate the Wireless Access Point even if it has an invalid IP address.

Utility Installation

1. Insert the supplied CD-ROM in your drive.
2. If the utility does not start automatically, run the **SETUP** program in the root folder.
3. Follow the prompts to complete the installation.

Main Screen

- Start the program by using the icon created by the setup program.
- When run, the program searches the network for all active Wireless Access Points, then lists them on screen, as shown by the example below.



The default settings are:

IP Address	Automatic (DHCP Client) If no DHCP Server is detected, the IP address is 192.168.0.228
SSID	wireless
Wireless Security	Disabled

If you want to change the default setting, follow the steps below:

1. Select the desired Wireless Access Point.
2. Click the *Set IP Address* button.

3. If prompted, enter the user name and password. The default values are **admin** for the *User Name*, and **password** for the *Password*.
4. Ensure the *IP address*, *Network Mask*, and *Gateway* are correct for your LAN. Save any changes.
5. Click the *Web Management* button to connect to the selected Wireless Access Point using your Web Browser. If prompted, enter the *User Name* and *Password* again.
6. The following screen should appear:

System

Identification

Access Point Name:

Description:

Country Domain:

MAC Address: 00:C0:02:00:00:12

IP Address

DHCP Client

Fixed IP Address

IP address	<input type="text" value="192"/>	<input type="text" value="168"/>	<input type="text" value="0"/>	<input type="text" value="100"/>
Subnet Mask	<input type="text" value="255"/>	<input type="text" value="255"/>	<input type="text" value="255"/>	<input type="text" value="0"/>
Gateway	<input type="text" value="192"/>	<input type="text" value="168"/>	<input type="text" value="0"/>	<input type="text" value="1"/>
DNS	<input type="text" value="192"/>	<input type="text" value="168"/>	<input type="text" value="0"/>	<input type="text" value="1"/>

WINS

Enable WINS

WINS Server Name/IP Address:

HTTP Port

HTTP Port Number:

Telnet

Enable Telnet Management

Please refer to the manual for the setting instruction.

4. Client (PC) Configuration

WEP/WPA-PSK Mode

Each Wireless Station must have the same settings as the Wireless Access Point.

Mode	On each PC, the mode must be set to <i>Infrastructure</i> .
SSID (ESSID)	This must match the value used on the Wireless Access Point. The default value is wireless Note! The SSID is case sensitive.
WEP WPA-PSK	If WEP or WPA-PSK is enabled on the Wireless Access Point, each station must use the same settings as the Wireless Access Point.

802.1x Mode

Using 802.1x requires extensive configuration. See the user manual for details.