

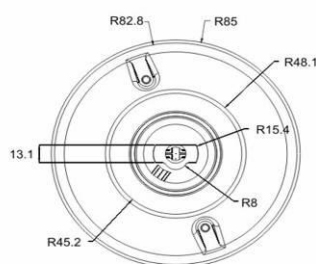


CAS-3000 Outdoor housing

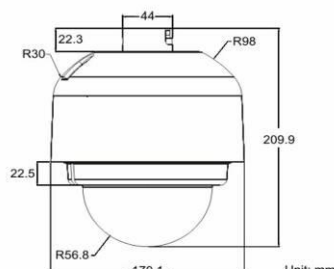
Product Guide:



Outdoor



Top View



Side View

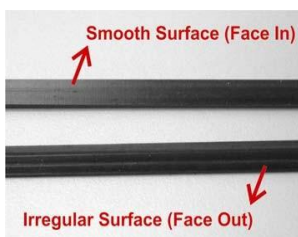
Unit: mm

Installation steps:

1. Put the Blue Waterproof Rubber Band on the edge of the Outdoor Housing.



Please note that the side of the Waterproof Rubber Band with smooth surface should be facing in; the other side with irregular surface should be facing out.



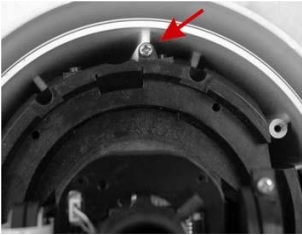
2. Put the Outdoor Housing in the Sunshield and fasten two Screws on the bottom of the Outdoor Housing.



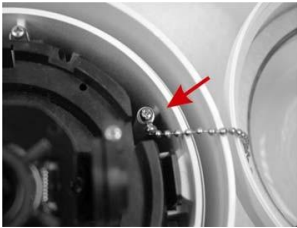
3. Aim the sides of the Snap-on Camera Module to the Slots in the Outdoor Housing and push it in until you hear “click” sounds on both sides.



4. Fasten the Module-fastened Screw on the Camera Module to fix it in the Outdoor Housing. And then install the black Inner Cover back. Press it down until there’s a “click” sound.



5. Attach the Anti-drop Chain on the Dome Cover to the Outdoor Housing and fasten the screw.



6. Aim the arrow on the Dome Cover to the one on the Outdoor Housing, and then press the Dome Cover down until it’s fully attached to the Outdoor Housing. Then fasten the two Security Screws on the Dome Cover to complete the Outdoor Housing installation.

