



IES-1070

8 FE + 2 GE TX Managed Switch -10 to 60C, DIN-rail

Quick Installation Guide

Default Setting

| | |
|----------|-----------------|
| IP | 192.168.1.10 |
| Login | root |
| Password | [blank] |
| Console | 115200, n, 8, 1 |

v1.00 - 1206

Overview

LevelOne IES-1070 Industry Ethernet Switch provides 8 ports of 10/100Base-TX plus 2 ports of 10/100/1000Base Gigabit Ethernet to enable high speed network at mission-critical environment. This device is designed to be mounted on an industry standard DIN-rail, plus the clearly visible status LEDs provide simple monitoring of port link activity.

Cost Effective

This device operates under -10 to 60 Celsius (-14 to 140 Fahrenheit) temperature that offers optimal suitability for industrial applications at low cost while maintaining all components built to withstand harsh environment applications without compromise reliability and stability.

Resilient Ring Network

Supports Ring topology network providing simple installation and ultra fast network recovery performance, less than 15ms. Unlike much complex resilient topology, such as a redundant star, the Ring simplifies the network design and requires less cabling installation. In addition, fast network recovery time helps minimize system downtime.

Features

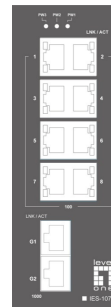
- Meets EN61000-6-2 & EN61000-6-4 EMC Generic Standard Immunity for industrial environment.
- Manageable via SNMP, Web-based, Telnet, and RS-232 console port.
- Supports Command Line Interface in RS-232 console.
- Support 802.3/802.3u/802.3ab/802.3z/802.3x. Auto-negotiation: 10/100/1000Mbps, full/half-duplex; Auto MDI/MDIX.
- 100Base-FX: Multi mode SC or ST type, Single mode SC or ST type. 100Base-BX: WDM Single mode SC type.
- 1000Base-SX/LX: Multi mode or Single mode SC type. 1000Base-BX: WDM Single mode SC type.
- Support 8192 MAC addresses. Provides 2M bits memory buffer.
- Alarms for power and port link failure by relay output.
- Operating voltage and Max. current consumption: 0.92A @ 12VDC, 0.46A @ 24VDC, 0.23A @ 48VDC. Power consumption: 11W Max.
- Power Supply: Redundant DC Terminal Block power inputs or 12VDC DC JACK with 100-240VAC external power supply.
- Field Wiring Terminal Markings: Use Copper Conductors Only, 60/75°C, wire range 12-24 AWG, torque value 7 lb-in.
- -40°C to 75°C (-40°F to 167°F) operating temperature range. Tested for functional operation @ -40°C to 85°C (-40°F to 185°F). UL508 Industrial Control Equipment certified Maximum Surrounding Air Temperature @ 75°C (167°F).
- For use in Pollution Degree 2 Environment.
- Metal case with Din-Rail or Panel Mounting installation

Package Contents

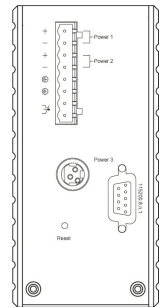
- IES-1070
- Quick Installation Guide
- CD User Manual / Utility

Physical Description

Front Panel



Rear Panel



Power Input

| | | | |
|----------------|---------------------|---|--------------|
| Terminal Block | PW1 | + | 12 – 48VDC |
| | | - | Power Ground |
| | PW2 | + | 12 – 48VDC |
| | | - | Power Ground |
| | Earth Ground | | |
| | Relay Output | | 1A @ 24VDC |

Relay Alarm warning signal disable for following:

1. The relay contact closes if Power1 and Power2 are both failed but Power3 on
2. The relay contact closes if Power3 is failed but Power1 and Power2 are both on

- There are three power inputs can be used. Redundant power function is supported

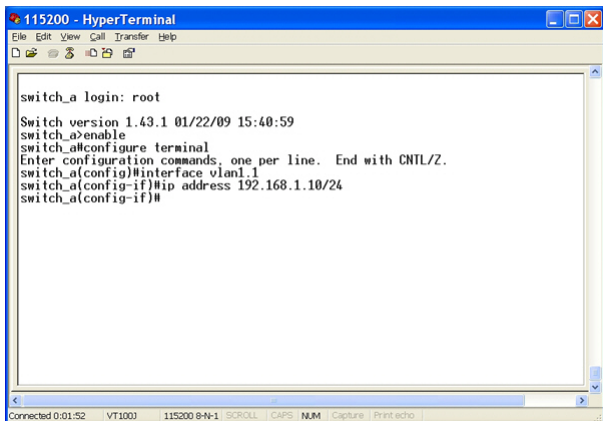
PW3 is DC Jack type with 12VDC input

LED Status

| LED | Status | Description |
|---|----------|--------------------------------|
| PW 1,2,3 | Steady | Power On |
| | Off | Power Off |
| 10/100Base-TX | | |
| LNK/ACT | Steady | Network connection established |
| | Flashing | Transmitting or Receiving data |
| 100 | Steady | Connection at 100Mbps speed |
| | Off | No connection |
| 10/100/1000Base-TX & 1000Base-FX & SFP | | |
| LNK/ACT | Steady | Network connection established |
| | Flashing | Transmitting or Receiving data |
| 1000 | Steady | Connection at 1000Mbps speed |
| | Off | No connection |

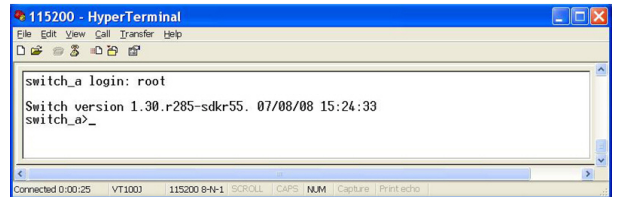
Terminal Mode). And the "switch_a(config)#" prompt will show on the screen.

- Set new IP address and subnet mask for Switch:
- At the "switch_a(config)#" prompt just type in "interface vlan1.1" and press <Enter> to logon to vlan 1 (vlan 1.1 means vlan 1). And the "switch_a(config-if)#" prompt will show on the screen.
- Command Syntax: "ip address A.B.C.D/M". "A.B.C.D" specifies IP address. "M" specifies IP subnet mask. "M"= 8: 255.0.0.0, 16:255.255.0.0, or 24: 255.255.255.0.
- For example, At the "switch_a(config-if)#" prompt just type in "ip address 192.168.1.10/24" and press <Enter> to set new IP address (192.168.1.10) and new IP subnet mask (255.255.255.0) for Switch



Console Configuration

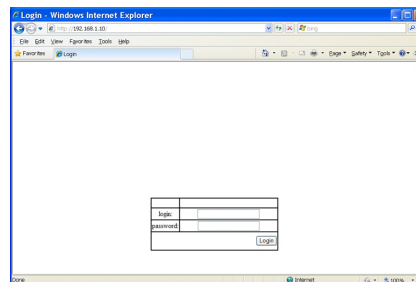
- Connect to the switch console:
- Connect the DB9 straight cable to the RS-232 serial port of the device and the RS-232 serial port of the terminal or computer running the terminal emulation application. Direct access to the administration console is achieved by directly connecting a terminal or a PC equipped with a terminal-emulation program (such as HyperTerminal) to the switch console port.
- Configuration settings of the terminal-emulation program:
- Baud rate: 115,200bps, Data bits: 8, Parity: none, Stop bit: 1, Flow control: none.
- Press the "Enter" key. The Command Line Interface (CLI) screen should appear as below:
- Logon to Exec Mode (View Mode):
- At the "switch_a login:" prompt just type in "root" and press <Enter> to logon to Exec Mode (or View Mode). And the "switch_a>" prompt will show on the screen.



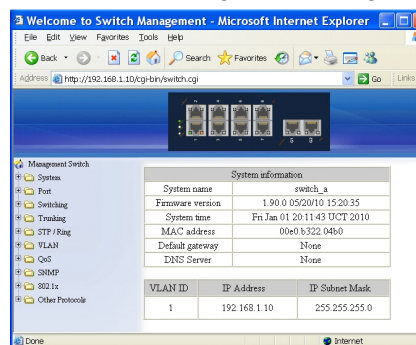
- Logon to Privileged Exec Mode (Enable Mode):
- At the "switch_a>" prompt just type in "enable" and press <Enter> to logon to Privileged Exec Mode (or Enable Mode). And the "switch_a#" prompt will show on the screen.
- Logon to Configure Mode (Configure Terminal Mode):
- At the "switch_a#" prompt just type in "configure terminal" and press <Enter> to logon to Configure Mode (or Configure

Web Configuration

- Login the switch:
- Specify the default IP address (192.168.1.10) of the switch in the web browser. A login window will be shown as below:



- Enter the factory default login ID: root.
- Enter the factory default password (no password).
- Then click on the "Login" button to log on to the switch.



Note: Please refer to User Manual for more detailed information