



LevelOne

NVR-0432

Quick Installation Guide

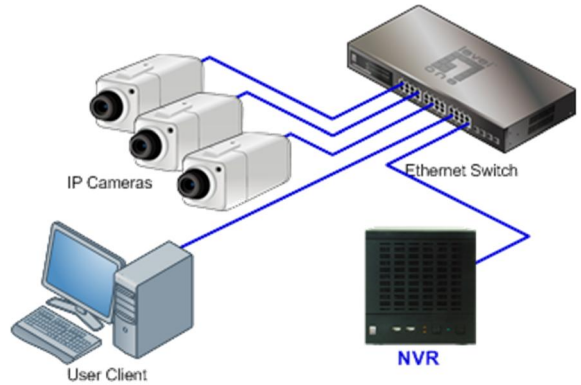
Default Setting

IP Address	Dynamic IP (with DHCP Server) or 192.168.101.50 (no DHCP Server)
User Name	admin
Password	admin

v1.1

Introduction

NVR-0432 is a high performance Network Video Recorder for easy set up a reliable and cost effective surveillance system for IP network cameras. It enables live view recording and playback for up to 32 IP network cameras via the local area network. The system is compatible with most major vendors IP cameras, with no specific hardware or software required, just plug NVR into LAN- connected device (switch or router) with few clicks and it will search and configure each connected IP cameras, no more extra work needed. It is a powerful solution that suits for small scale applications such as retail store, office, bank or home surveillance systems.



Package Contents

- ✓ Network Video Recorder
- ✓ Quick Installation Guide
- ✓ CD Manual / Utility
- ✓ Power Cord

System Requirement

Operating System

Microsoft® Windows® 2000 Professional, Windows® XP Professional (32 bit) or Windows® Server 2003 (32 bit)
Browser Microsoft Internet Explorer 7 or above

CPU

Minimum Intel® Pentium® 4 2.4 GHz or higher (Dual Core is recommended)

RAM

Minimum 1 GB of RAM, 2GB or above is recommended

Network

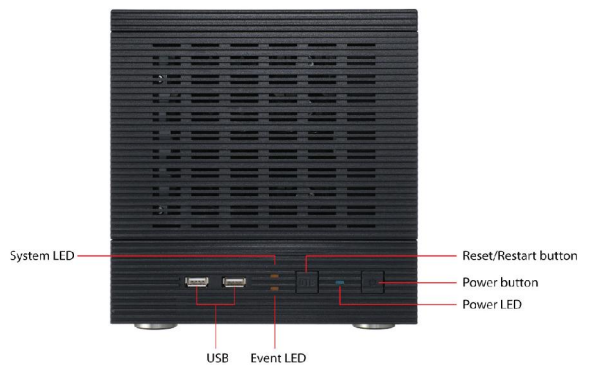
Minimum 10/100 Ethernet (Gigabit is recommended)

Graphics Adapter

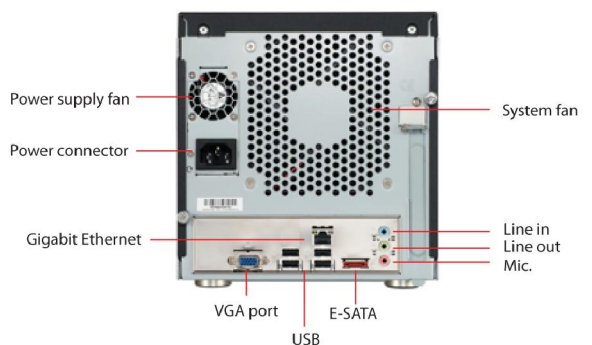
AGP or PCI-Express, minimum 1024x768, 16 bit colors.
(We highly recommend to work above the 1024 x 768 resolution to get better result)

Make sure your display DPI setting is set to default at 96DPI

Front View



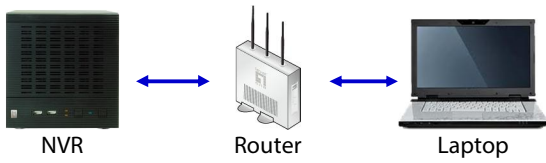
Rear View



Connect to NVR

Access NVR by Search Utility

The NVR is placed in a network with a DHCP server (router in most cases) then use the **Device Search Utility** to locate the NVR. In order to get utility connected to NVR, both NVR and laptop IP must under same subnet (ex 192.168.1.xx)



Install the Utility from CD



Once the installation is complete, check the "Launch the Search AP" option and click Finish



The search will start automatically



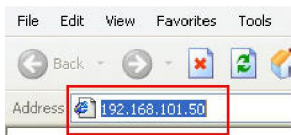
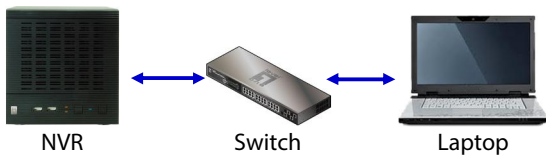
Double-click on the NVR listed from search result window; it brings up the web administration page from your PC default browser.



Default user name / password => **admin / admin**

Access the NVR by Default IP

The NVR comes with a pre-configured static IP. However, it is only used when there is no DHCP server presented in the network. The NVR will turn on its DHCP server function and act as the DHCP server in the network. To connect to the NVR, use a PC that is on the same network over a switch or hub, or connect the PC directly to the NVR using a crossover CAT5 Ethernet cable. The default IP is **192.168.101.50**

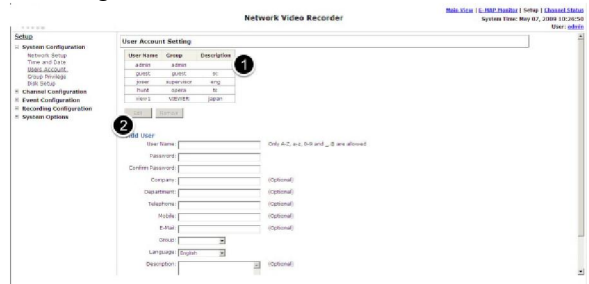


The PC that is connected directly to the NVR (or within the same local area network) should receive an IP from the NVR. Simply access the NVR from your web browser with its IP address



For the first time, IE browser will prompt and request to install the "ActiveX" message, click "Install" to proceed.

The default login username and password is admin/admin. To change the password of the admin account, go to "Setup" --> "System Configurations" --> "User Account", click on the "admin" account in the account list then press the "edit" button to change its password. Finally, click "Apply" to save the change.



Note

Please refer to User Manual for more details