



NVR Management Software

Quick Installation Guide

Ver. 1.0

User Interface Overview

1

Live Video

This is the section where the live videos are displayed

Menu Bar

This is where all functions can be accessed

Quick Access Quick access buttons to certain functions that you can do to a live video



System Logs
Display system status information

PTZ Control
Control the PTZ camera

System Info
Display the system information

Split Video Windows
Switch among different window split modes

Live Video: This is where all the videos are displayed. You can decide what channels' videos to be displayed here by dragging cameras from the side menu bar and dropping them anywhere in this section.

Menu Bar: This is where you can access all functions of the software. Camera list and device status information are also available from the menu bar.

2

PTZ Control: This is where you can pan, tilt, zoom the selected PTZ camera. Functions such as preset point navigation and auto pan can also be accessed here

System Info: It provides information of current system time, who is currently logged in and the CPU usage that the software is currently consuming.

Split Video Windows: You can change the video split windows with you desire depends on how many videos you wish to view at a time.

System Logs: System status such as motion detection, functions that were accessed or settings that were altered are displayed here.

Quick Access: Each video window comes with quick access buttons which allows you to quickly take certain actions to the video you are viewing.

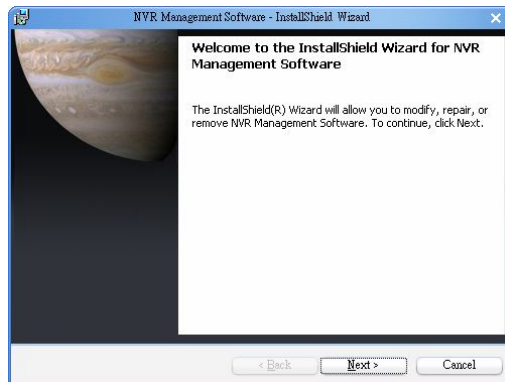
Begin Installation

The installation should launch as soon as you insert the CD. If not, simply double-click on your CD-ROM drive icon in “My Computer” to launch the installer.

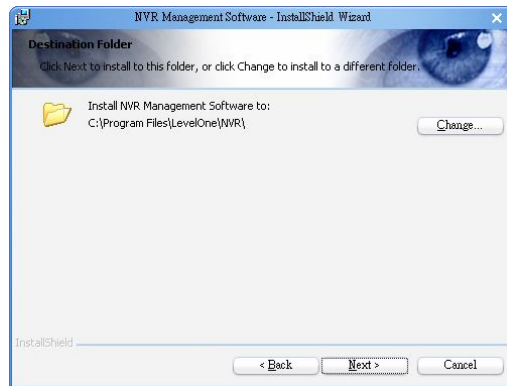
Once the installer is launched, it should start by checking the compatibility with the operating system you are running this installation on.



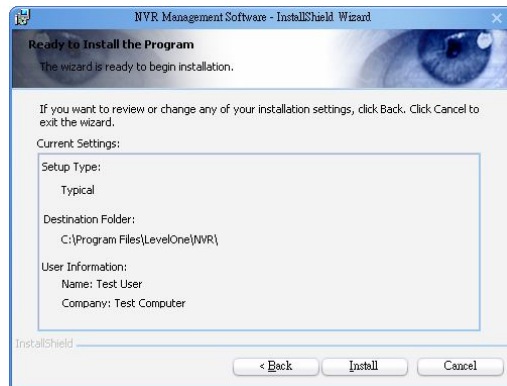
Once the compatibility check is passed, you can begin the installation by clicking “next”.



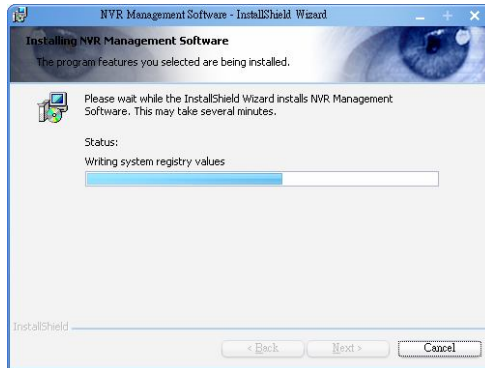
The installer will install the program in a pre-defined directory. You can accept the default and click “Next” to proceed with the installation.



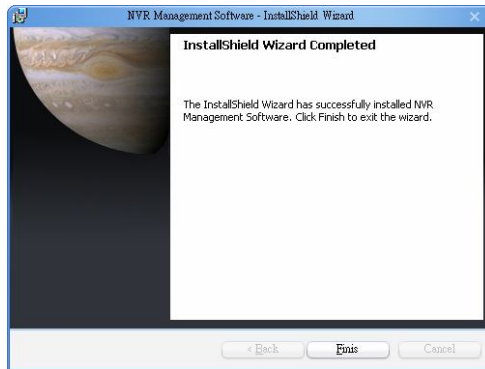
The installer will confirm the installation directory one more time. Click “Install” to begin installation, or click “Back” to change the installation directory.



The installer will display the installation process.

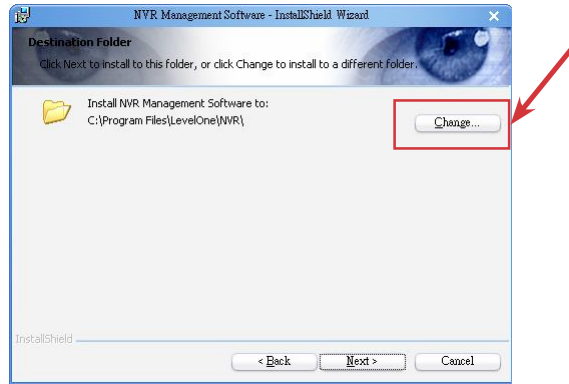


Once the installation is complete, click “Finish” to exit out the installer.

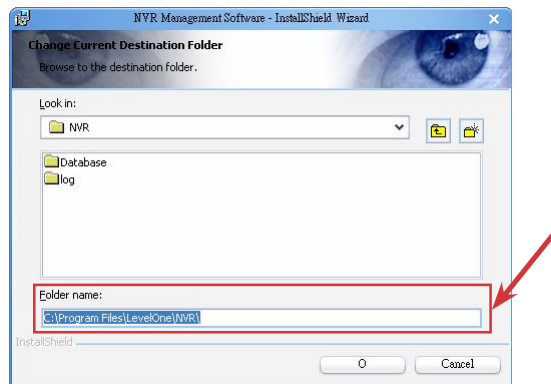


Change Installation Directory

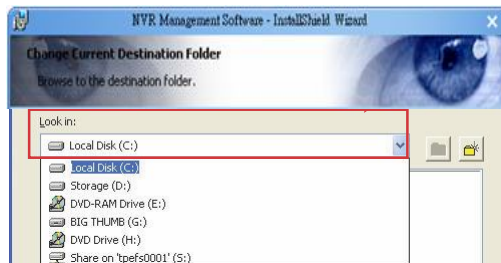
If you wish to install the program other than its predefined directory, click “Change” at the prompt where it displays the pre-defined directory,



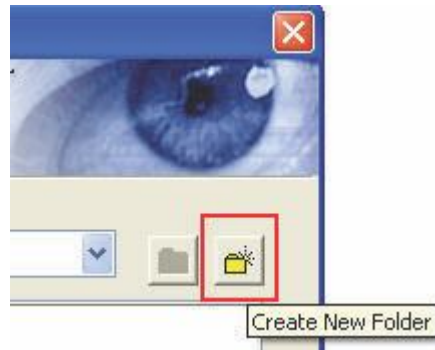
You will be prompted with a new window in which you can type in the new directory at the bottom.



Or you can choose the directory from the drop down menu.



If you need to install in a folder that doesn't exist yet, click "Create New Folder" to create it.

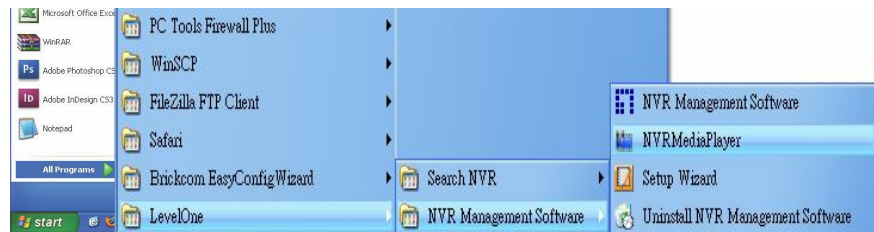


Start NVR Management Software

After the program is successfully installed on the PC, There are two ways to start it.

- **Start it from the "Start" menu:**

Simply go to "Start" >> "All Programs" >> "LevelOne" >> "NVR Management Software"

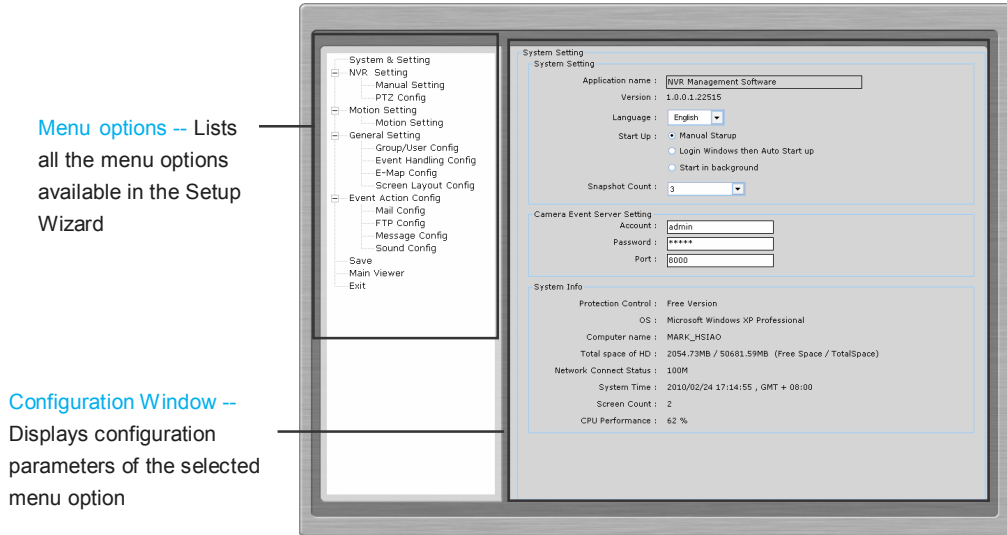


- **Start it from the desktop:**

The program automatically creates a shortcut icon on your desktop after it's successfully installed. Simply double-click the icon to launch the program.



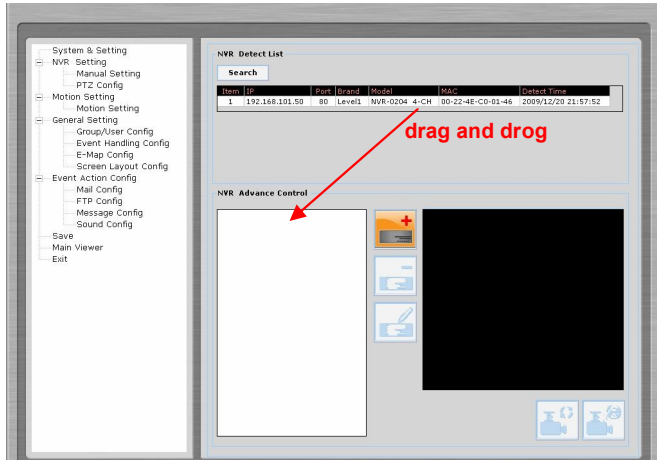
* You should run the "Setup Wizard" before launching NVR Management Software. The Setup Wizard is a separate program which you can launch it the same way you launch NVR Management Software (from Start menu or the desktop shortcut). The purpose of the Setup Wizard is to help users with certain preliminary settings in order for the program to work with NVR Series network video recorder.



It's necessary to use the Wizard The majority of the settings of NVR Management Software on its Setup Wizard. It's necessary that you run the wizard prior to using NVR Management Software.

With the Setup Wizard, you are able to:

- . Add/Remove/Edit one or more NVR
- . Configure PTZ preset points
- . Configure Motion Detection
- . Configure user privileges
- . Configure how events are handled
- . Configure E-map
- . Configure multiple monitors
- . Configure event actions

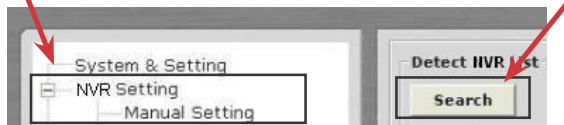


Connect the program with NVR

The main purpose of NVR Management Software is to manage multiple NVRs. Before it can be done, you would need to tell the program which NVR you need it to manage. You do that by adding one or more NVRs to the program through the Setup Wizard.

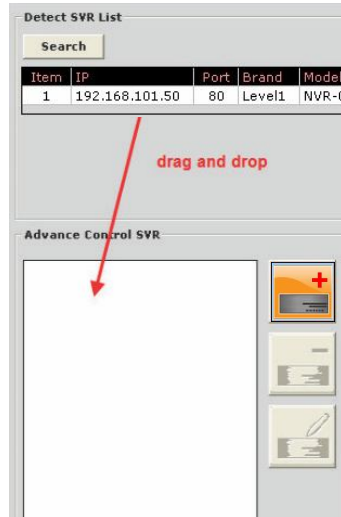
Automatic Search:

The Setup Wizard is able to find NVR on your local network automatically. Simply go to “**NVR Settings**” >> “**Manual Settings**” in the Setup Wizard, and click the search button to locate NVRs that are placed on your local network.



Drag and Drop to add

Once the Setup Wizard detects NVR on the network, they will be listed in the “Detect List”. Simply drag one from the list and drop it in the “Advance Control List” below to add it



You will then be prompted with its username and password which you need to enter accordingly to complete the action.

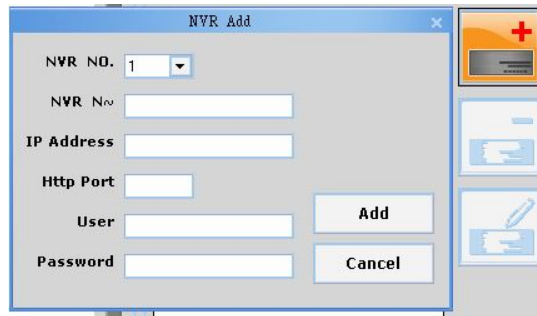


Add NVR-0216 Manually with Setup Wizard:

Simply click on the “Add NVR” button in the same page to add it manually.



You will be asked for the information shown below before successfully adding the NVR to the program.

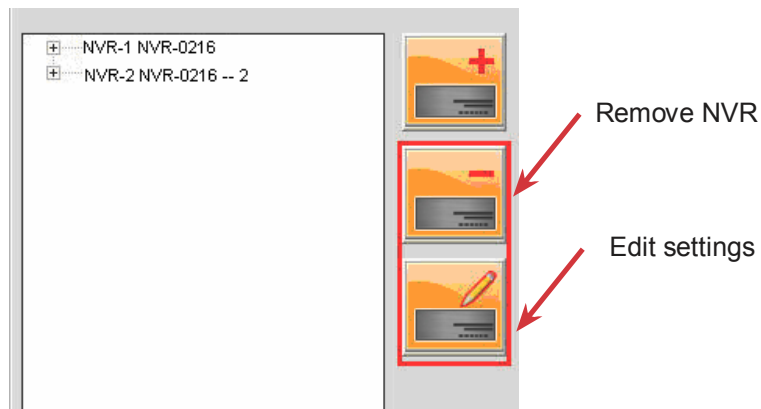


The screenshot shows a dialog box titled "NVR Add". It has a close button (X) in the top right corner. The form contains the following fields and buttons:

- NVR NO. 1 (dropdown menu)
- NVR No. (text input field)
- IP Address (text input field)
- Http Port (text input field)
- User (text input field)
- Password (text input field)
- Add (button)
- Cancel (button)

Remove an NVR to Edit its Settings

Once you have one or more NVRs added to the program, the “Remove” and “Edit Settings” buttons will become available. Simply click to select an NVR from the list on the left and choose the corresponding button on the right.



PTZ Configuration

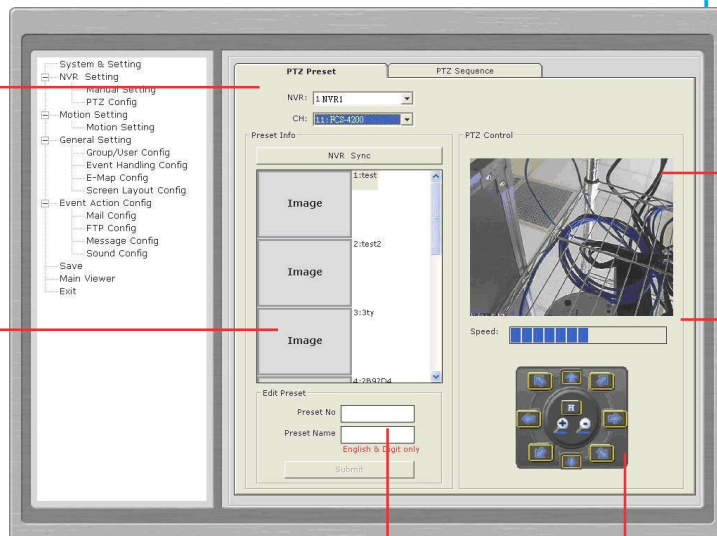
5

Select NVR and camera

Select which NVR and which camera from the drop-down list

PTZ Preset Points List

List of all PTZ preset points of the selected camera



Video Preview

You can get a video preview of the selected camera here

PTZ Speed Control

Adjust the increment of the PTZ movements

PTZ Preset Point Name

Add a new name or alter an existing name of a preset point

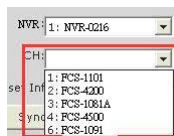
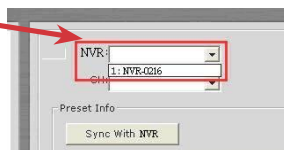
PTZ Control Panel

Use this panel to define a new preset point or make change to an existing one

Synchronize or Add New PTZ Preset Points You can synchronize PTZ settings from all cameras connected to NVR-0216 on the network or you can create and add new PTZ preset points to those cameras through the Setup Wizard.

Simply select a NVR from the drop-down menu first and then select a camera to synchronize or add new PTZ preset points.

Select a NVR first



Then select a camera connected to the selected NVR

Use the provided PTZ control panel to define a PTZ preset point. You may change the speed of the PTZ movements if you will.



Video Preview

You can get a video preview of the selected camera here

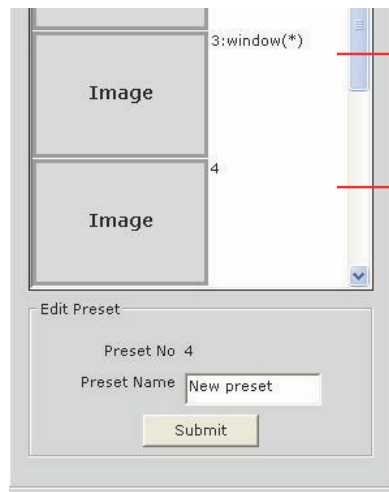
PTZ Speed Control

Adjust the increment of the PTZ movements

PTZ Control Panel

Use this panel to define a new preset point or make change to an existing one

You can get a list of the preset points that have been added to the camera as well as the opening slots that are available which you can add new preset points to later on.



Slot configured with a PTZ preset point

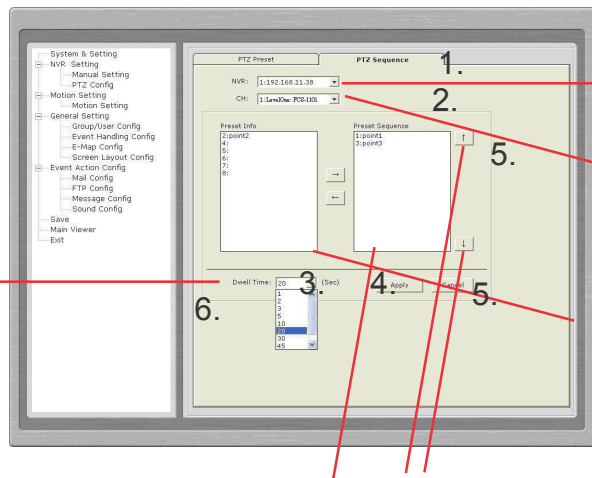
Slot that has not been configured with a PTZ preset point

Configuring PTZ Preset Sequence

You can configure the PTZ preset sequence after you create and define PTZ preset points for the cameras. To configure PTZ sequence, open the setup wizard and go to NVR setting >> PTZ Config >> PTZ sequence



You can get a list of the preset points that have been added to the camera as well as the opening slots that are available which you can add new preset points to later on.






Select an NVR first
Select an NVR from the drop down menu first

Select a PTZ Camera
Select a PTZ camera to confirm PTZ sequence.

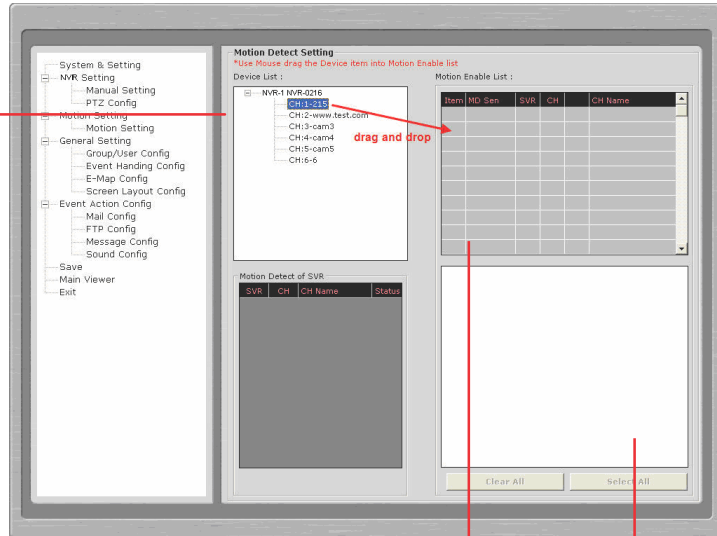
Select Preset Points
The previously configured preset points will be listed on the left

Set Dwell Time Finally set the dwell time for sequencing view among each point

Move the ones to the right
Move the preset points to the list on the right using the  which they will be used for PTZ sequencing

Adjust Sequence Order
You can use the  or  buttons to adjust the sequence orders

Device List
Lists of all NVR
and cameras



Motion Detection Enable List
Cameras with motion detection
enabled and configured

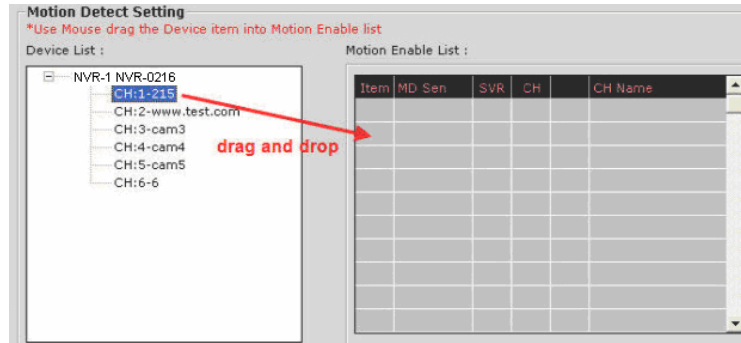
Video Preview
Video preview of
the selected
camera from the
above list

Configuring Motion Detection

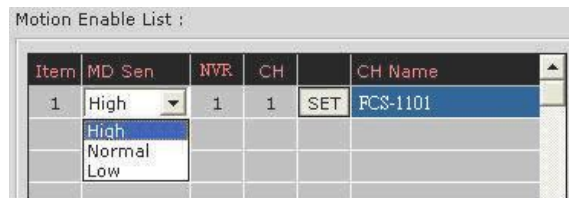
The program can be configured to alert users when detecting motions in video streams received from one or more cameras. The user is able to define an area in a live video where motions in this area will trigger the program and send out alerts.

An example of this can be to have a camera pointing to the doorway where no one comes through during the day. You can then define an area with the door included. This tells the program that any moving object shows up in this area (a person walking in through the doorway) is considered abnormal and an alert should be sent to user for further action.

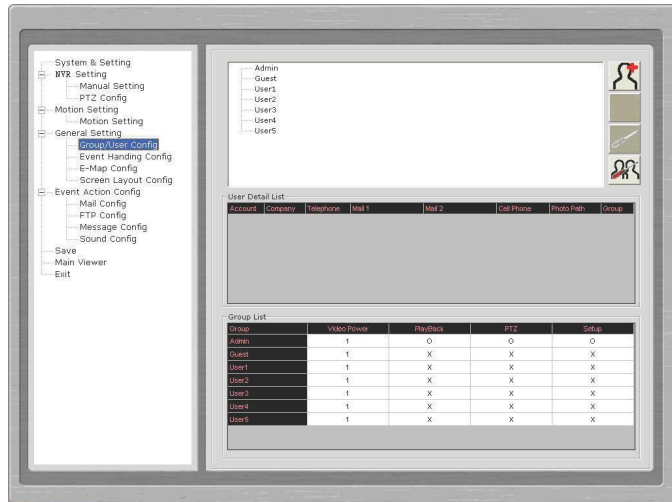
To enable motion detection to certain cameras, drag a camera from the device list and drop it on to the motion detection enable list.



The camera will then show up in the motion detection enable list. You can then set sensitivity of the motion detection.



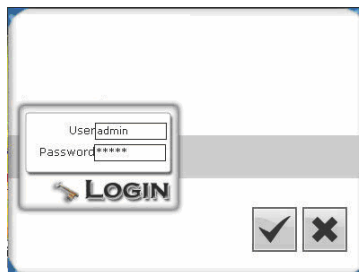
Click "Set" to display the video in the video preview window in which you can define an area for motion detection.



Users and Groups Configuration

The section allows users to add new users and customize each of their access privilege by assigning them to different user groups. The purpose of this function is to limit the number of people to have access to the program, hence, having access to view live videos, playback videos or altering settings of the program.

Once you add users to the program, you will be prompted to enter the username and password of a valid user account.



* There is no user account configured for the program by default. The privileges of the "Admin" and the "Guest" groups are not configurable and the "Guest" account is configured with the "view only" privilege.

Add a New User

To add a new user, simply click on the “add new user” button available at the upper-right hand corner in the “User/Group Config” page.



This opens up a new window for you to enter the detail information of the user you are creating.



A screenshot of a 'User Setting' dialog box. It contains several input fields: 'Photo (Dubble Click to Setting)', '*User Name' (with a 'Check' button), '*Password', '*Password Confirm', 'Company', 'Telephone', 'Mail 1', 'Mail 2', 'Cell Phone', and 'Group' (with a dropdown menu set to 'Admin'). At the bottom, there are 'Submit' and 'Cancel' buttons, and a note '*:Necessary'.

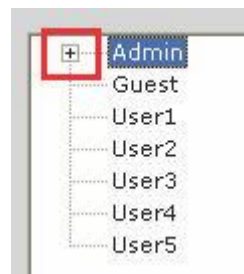
* The “Username”, “Password” and “Confirm Password” fields are required when creating a new user account. The rest of the fields are optional.

* You can click the “Check” button to check if the username you are creating for the new account has been used by another account.



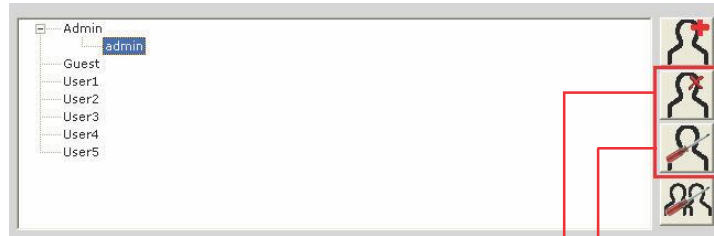
A close-up screenshot of the '*User Name' field and the 'Check' button from the 'User Setting' dialog. The 'User Name' field contains the text 'user' and the 'Check' button is highlighted with a red box.

A “+” will appear next to the group indicating a user has been added to that particular group. Click on the “+” to expand the group and all users will be displayed.



The “Remove” and “Edit” buttons will become available once a user has been created.

Click the “Remove” button to remove an existing user, or the “Edit” button to edit setting of an existing user account



Remove a user

Edit setting of an existing user account

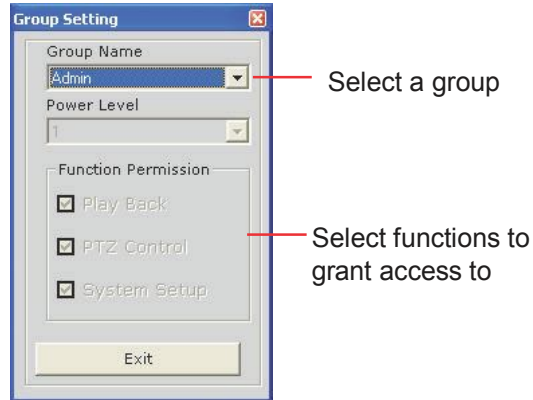
Edit Group Privilege

To edit access privilege of a particular user group, simply select a group first then click the “Edit Group” button.



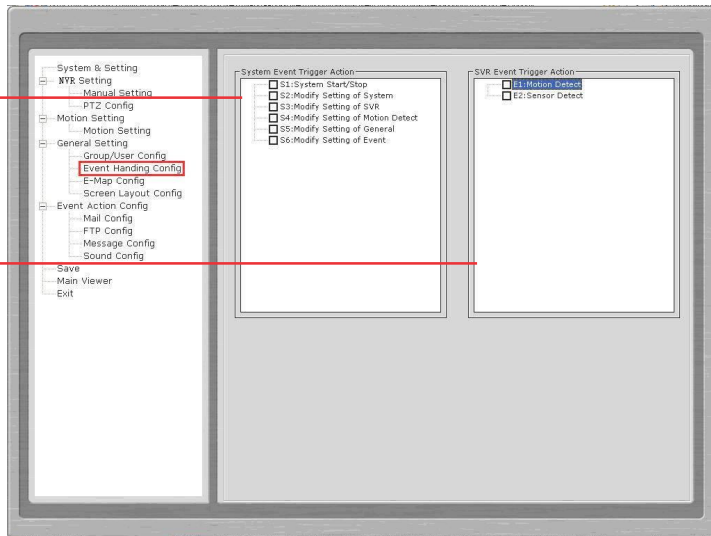
Edit privilege of a group

This opens up the group privilege configuration dialog. Select a group from the drop-down menu and check which function(s) this group has permission to.



General event conditions

NVR-specific event conditions



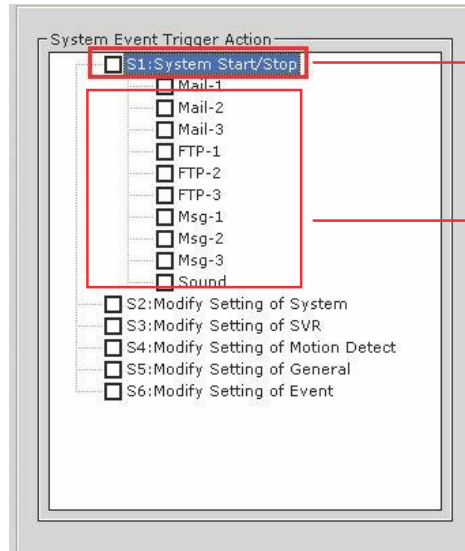
Event Handling Configuration

Here you can define what constitutes an event with pre-defined conditions and what actions to be taken when these conditions are met.

The conditions are divided into two categories:

- **General event conditions**
Conditions such as settings being altered
- **NVR-specific event conditions**
Conditions such as motion detection

To enable a condition for event trigger, simply tick the checkbox of a particular condition.



Event Condition

Tick the checkbox to enable
Double-click pulls down the
event servers

Event Servers

Tick the checkbox to enable

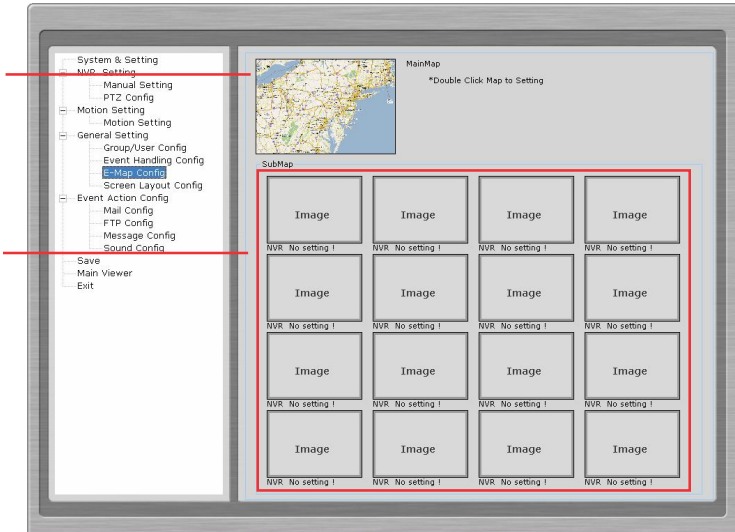
Double-click on any condition pulls down the event servers which users can choose to use for that particular condition. The event servers can be considered as actions that are taken place when events are triggered.

Main Map

The main map which displays locations of all NVRs

Sub-maps

Each sub-map displays the near-by area of a particular NVR which shows locations of all cameras connected to it



The E-Map

The program provides two-layered e-map which the top layer displays the location of all NVRs and the second layer (sub-map) displays locations of all cameras connected to one NVR.

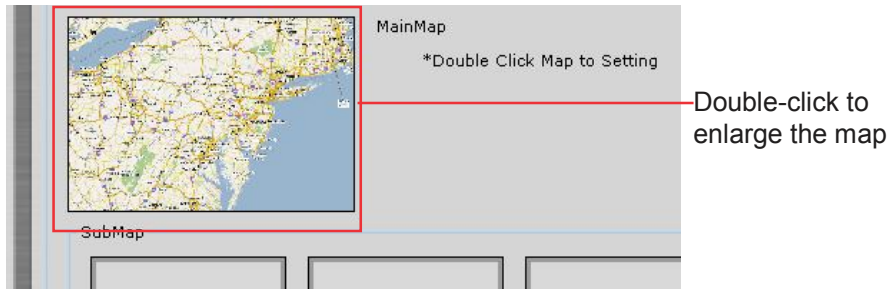
* There are 16 sub-maps and one for each NVR.

This function is particularly useful when motion detection is configured. You can simply place the e-map on one monitor and whenever there is motion detected, the NVR will be highlighted on the map and live video will be displayed for live event monitoring.

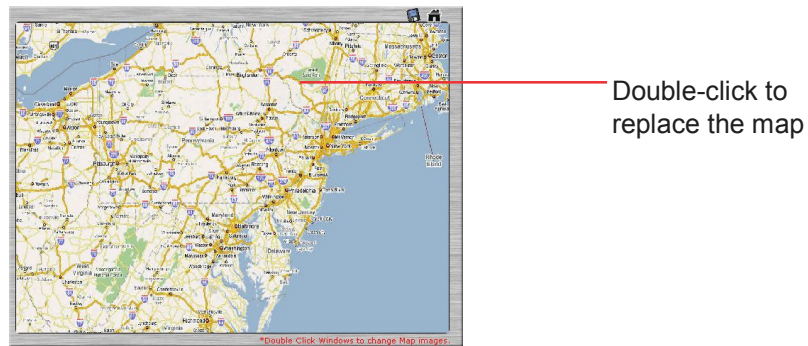
Configuring The E-Map

You can replace the map of your own when configuring e-map.

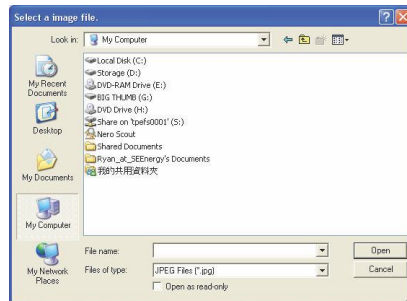
Simply double-click anywhere on the map to enlarge it.



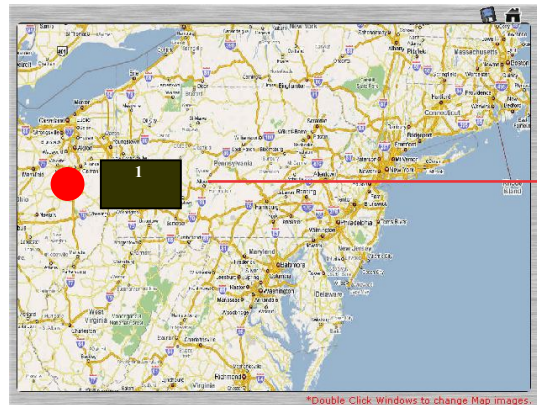
And double-click on the enlarged map again to open the dialog which lets you locate the new map file. You will need to select a map file that is in the JPEG file format.



Locate the new map file from the local computer



Once the new map is in place, move the red dots on the map to define locations of each NVR.



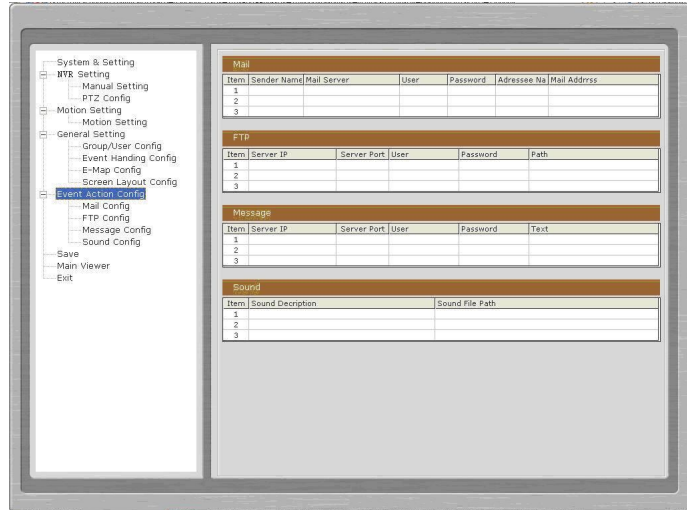
Drag and move the red dot to define location of a NVR

Click the “Save” button at the upper-right hand corner to save changes when you are done.



Save settings

* Use the same method described above to configure submaps for each NVR.



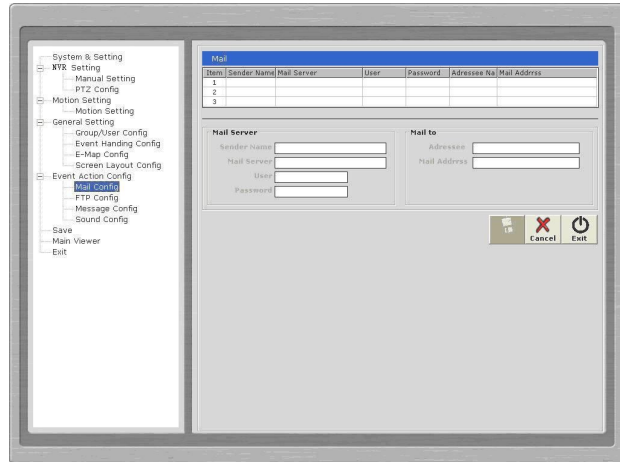
Event Servers are Event Actions The program provides four different event servers that can be used when events are triggered.

- . Mail server
- . FTP server
- . Message server
- . Sound server

You can add up to three for each server and pick the one(s) you would like to use for particular event(s).

You can get a configuration overview of all the event servers under the “Event Action Config” page.

Configure Mail Server for Events



You can configure up to three mail servers in which you can select later and use them for different event trigger conditions.

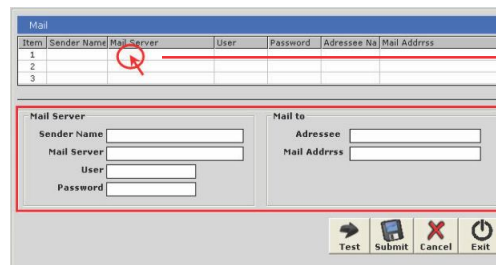
When configuring an mail server, it's essential that you provide the following information:

- Mail server address (IP or FQDN domain name)
- Username and password for the mail server (if required)
- Recipient's e-mail address

To start adding a mail server, click on an item field and the setting boxes should become available.

Enter the mail server information and click "Submit" to save the settings.

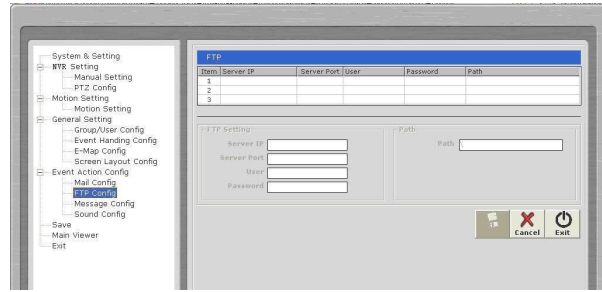
You may click "Test" to verify the settings prior to saving the configurations.



Click to add or edit

Enter mail server info

Configure FTP Server for Events



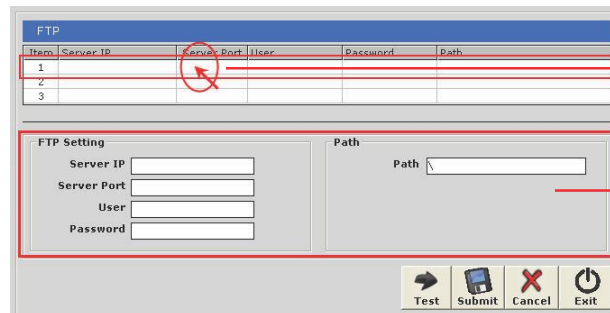
You can configure up to three FTP servers in which you can select later and use them for different event trigger conditions.

When configuring an FTP server, it's essential that you provide the following information:

- FTP server address (IP or FQDN domain name)
- FTP server port (such as port 21)
- Username and password for the FTP server (if required)
- Path to upload the files to (if not I directory)

To start adding an FTP server, click on an item field and the setting boxes should become available. Enter the FTP server information and click "Submit" to save the settings.

You may click "Test" to verify the settings prior to saving the configurations.



Click to add or edit

Enter mail server info

Configure Message Server for Events

The screenshot shows a window titled "Message" with a table and two main sections. The table has columns for Item, Server IP, Server Port, User, Password, and Text, with three rows numbered 1, 2, and 3. Below the table are two sections: "Message Setting" with input fields for Server IP, Server Port, User, and Password; and "Message" with a "Text" input field. At the bottom right are buttons for "Cancel" and "Exit".

You can configure up to three message servers in which you can select later and use them for different event trigger conditions.

When configuring a message server, it's essential that you provide the following information:

- Message server address (IP or FQDN domain name)
- Message server port
- Username and password for the Message server (if required)
- Text to be broadcasted

To start adding a message server, click on an item field and the setting boxes should become available. Enter the message server information and click "Submit" to save the settings.

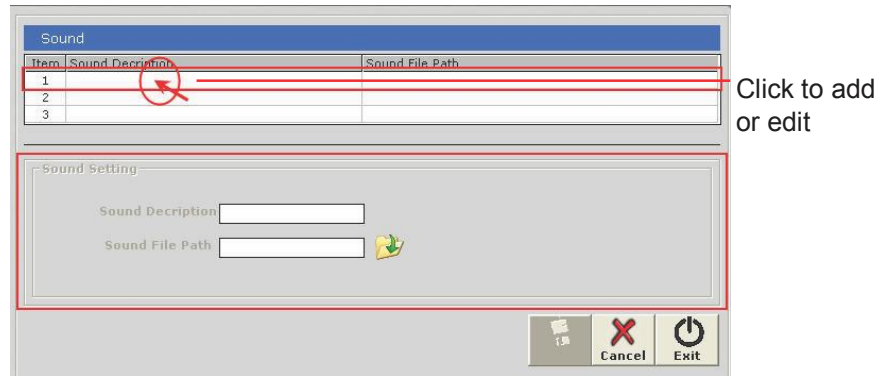
You may click "Test" to verify the settings prior to saving the configurations.

This screenshot is similar to the one above but includes annotations. A red circle highlights the "Item" column of the table, with a red arrow pointing to it from the label "Click to add or edit". A red line connects the "Text" input field in the "Message" section to the label "Enter mail server info". The "Test" button is now visible at the bottom left of the window.

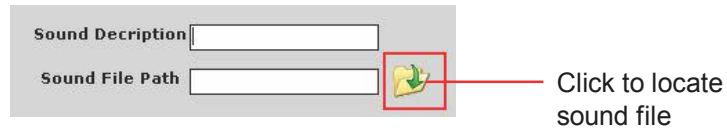
Configure Sound Server for Events

You can configure the program to send warning sound from the system's speaker when events are triggered.

To start adding a sound server, click on an item field and the setting boxes should become available.

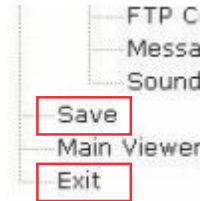


Click on the "folder" icon to locate the sound file. You may select a sound file that is only in the WAV file format.

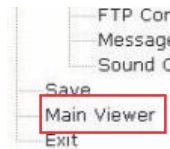


Accessing the main program

Now that you have finished configuring the mail program through its setup wizard, after saving all the settings (which you can do so by clicking on the “Save” button on the left pane tree menu), simply click “Exit” to close the Setup Wizard.



To access the main program, simply click on “Main Viewer” to exit the Setup Wizard and it will be open the main program automatically.



You can then access the main program by double-clicking on the short cut icon located on the desktop.



Or you can access the main program by simply go to “Start” >> “All Programs” >> “LevelOne Corp” >> “NVR Management Software”

