

LevelOne

USB-0202

USB Net Connector

Quick Installation Guide

English	Booster
Deutsch	Svenska
Français	Slovenščina
Español	简体中文
Dutch	繁體中文
Dansk	한국어
Italiano	Русский
Ελληνικά	

Table of Contents

ENGLISH	3
DEUTSCH	9
FRANÇAIS	15
ESPAÑOL	21
DUTCH	27
DANSK	33
ITALIANO	39
ΕΛΛΗΝΙΚΑ	45
PORTUGUÊS	51
SVENSKA	57
SLOVENŠČINA	63
簡體中文	69
繁體中文	75
한국어	81
РУССКИЙ	87

This guide covers only the most common situations. All detail information is described in the user manual.

Setup

Windows Vista Setup

There are two ways to install the Windows Vista software when it "Found New Hardware"

(1) Press Cancel then install driver from

LevelOne's CD

(2) Locate and install driver software

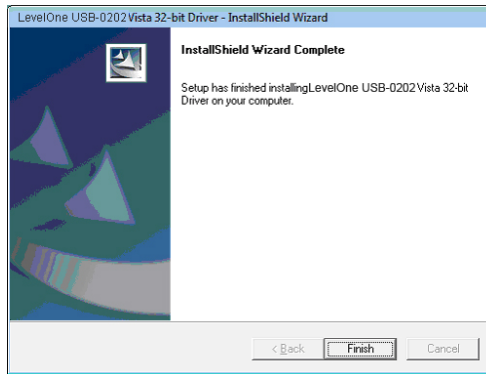
Please refer to the following instruction:

(1) Install driver from levelOne's CD

1. The "Found New Hardware Wizard" window pops up. Click "Cancel" to close the window.



2. Insert LevelOne CD-Rom to your CD-Rom drive. Click on **My Computer** → **your CD-Rom drive** → **Driver** → **Vista 32 bit set up** Press setup icon then it will start to install the driver.
3. Click Finish button after complete installation.

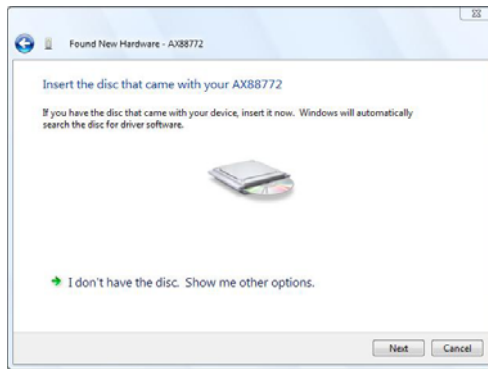


(2) Locate and install driver software :

1. The "Found New Hardware" window pops up. Select "Locate and install driver software".



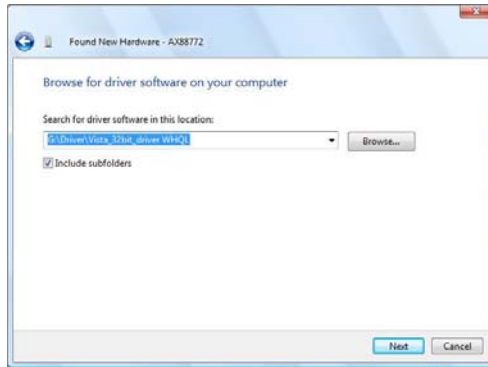
2. Select "I don't have the disc. Show me other options". Then, click "Next" to proceed.



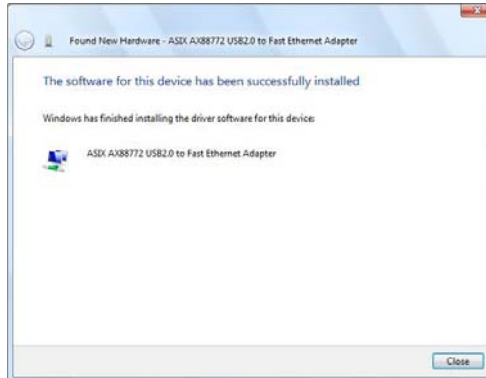
3. Select "Browse my computer for driver software".



4. Insert the provided driver CD. Click the "Browse" button and select Computer → your CD-ROM drive → Driver → Vista_32bit_driver WHQL
Click "Next" to proceed.



5. Click the “Close” button to finish the installation

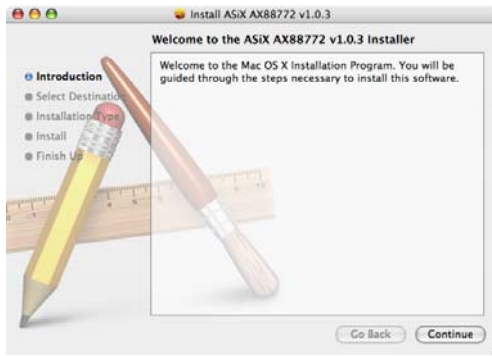


Mac OS Setup

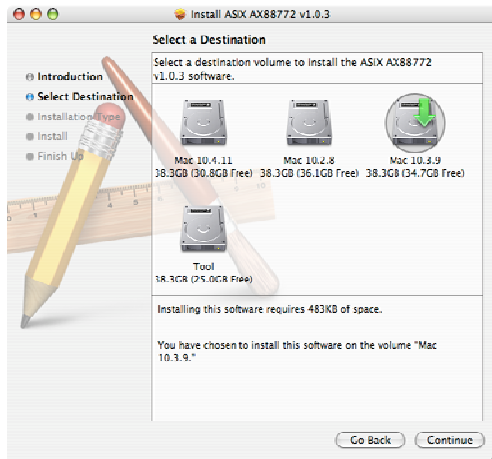
It is not necessary to install driver on Mac10.5, it 's plug and play.

Below are Mac 10.3 or 10.4 installation guideline:

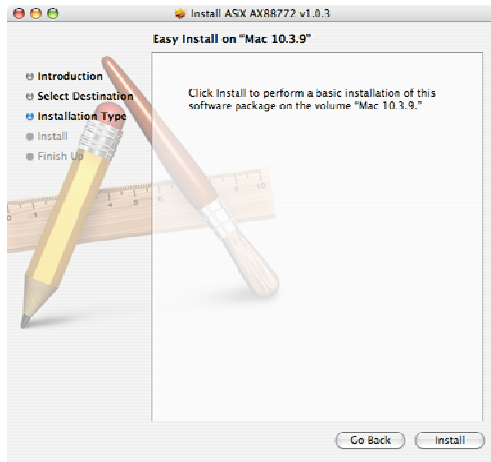
1. Insert the provided CD to your CD-Rom drive. Browse to **Mac_OSX10.3** (or Mac_OSX10.4, which depends on your system). The install window pops up. Click “Continue.”



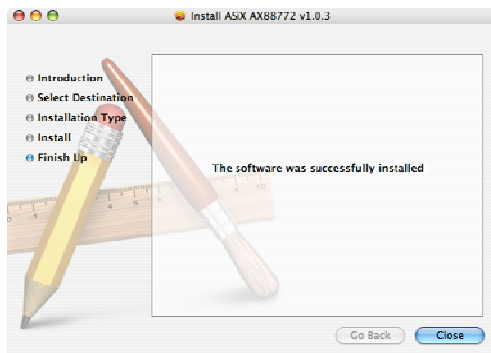
2. Select a destination to install the driver on. Click “Continue” to proceed.



3. Click “Install” to start installation.



4. Click the “Close” button to finish the installation.



Wii Setup

Just connect the USB-0202 to a free USB port of Wii (Game Station) and the default setting is DHCP client mode.

Setup

Windows Vista-Setup

Es gibt zwei Möglichkeiten, die Windows Vista-Software zu installieren, wenn "Found New Hardware" (Neue Hardware gefunden) festgestellt wurde:

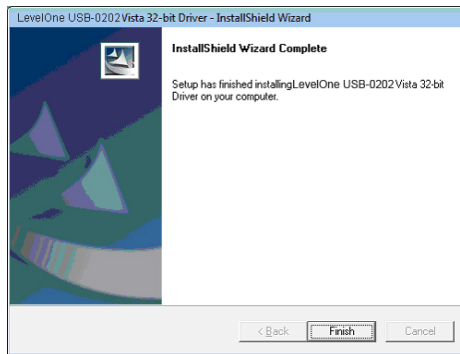
- (1) Klicken Sie auf **Cancel** (Abbrechen) und installieren Sie den Treiber von der LevelOne-CD.
- (2) Lokalisieren und installieren Sie die Treibersoftware.

Beachten Sie die folgenden Anweisungen:

- (1) Installieren Sie den Treiber von der LevelOne-CD.
 1. Das Fenster "Found New Hardware Wizard" (Assistent für das Suchen neuer Hardware) blendet sich ein. Klicken Sie auf "Cancel" (Abbrechen), um das Fenster zu schließen.

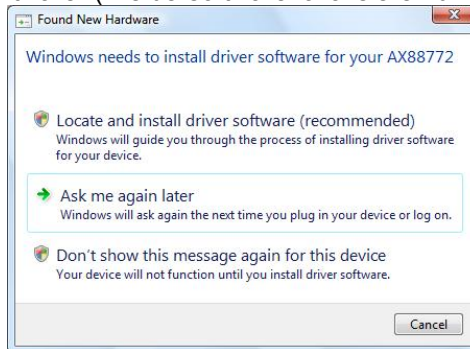


2. Legen Sie die LevelOne-CD-ROM in das CD-ROM-Laufwerk. Klicken Sie auf **My Computer (Arbeitsplatz) → Ihr CD-ROM-Laufwerk → Driver (Treiber) → Vista 32 Bit-Setup**. Klicken Sie auf das Setup-Symbol und der Treiber wird installiert.
3. Klicken Sie nach abgeschlossener Installation auf die Schaltfläche **Finish** (Fertig stellen).

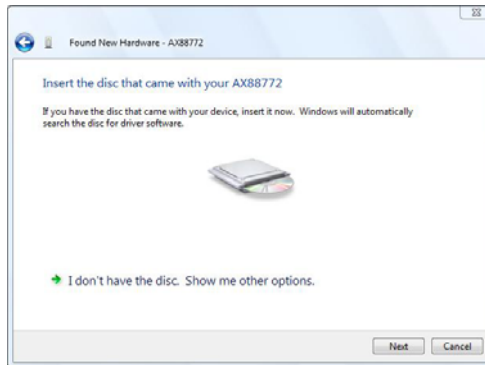


(2) Lokalisieren und installieren Sie die Treibersoftware:

1. Das Fenster "Found New Hardware" (Neue Hardware gefunden) blendet sich ein. Wählen Sie "Locate and install driver software" (Treibersoftware lokalisieren und installieren).



2. Wählen Sie "I don't have the disc. Show me other options" (Ich habe keine CD. Andere Optionen anzeigen). Klicken Sie dann auf "Next" (Weiter), um fortzufahren.

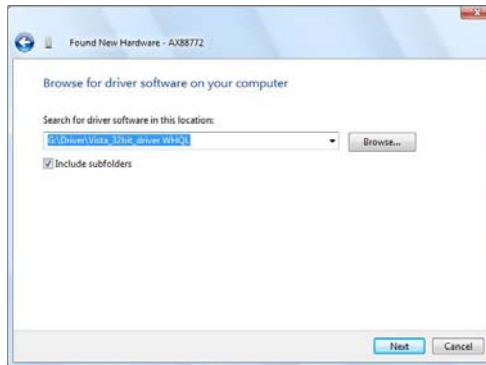


3. Wählen Sie "Browse my computer for driver software" (Meinen Computer nach der Treibersoftware durchsuchen).

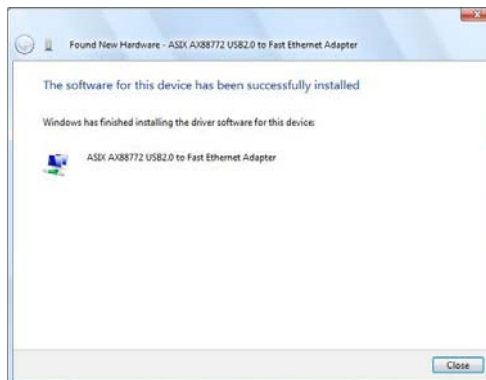


4. Legen Sie die beigefügte Treiber-CD ein. Klicken Sie auf die Schaltfläche "Browse" (Durchsuchen) und wählen Sie My Computer (Arbeitsplatz) → Ihr CD-ROM-Laufwerk → Driver (Treiber) → Vista_32bit_driver WHQL (Vista 32-Bit-Treiber WHQL)

Klicken Sie auf "Next" (Weiter), um fortzufahren.



5. Klicken Sie auf die Schaltfläche "Close" (Schließen), um die Installation fertigzustellen.

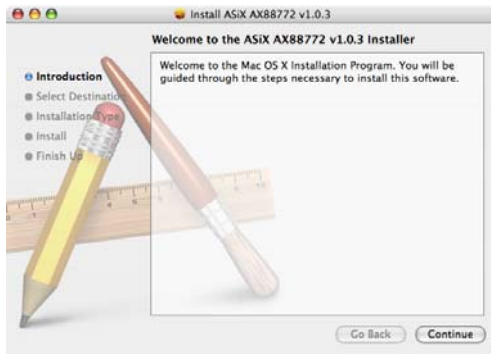


Setup des Mac-Betriebssystems

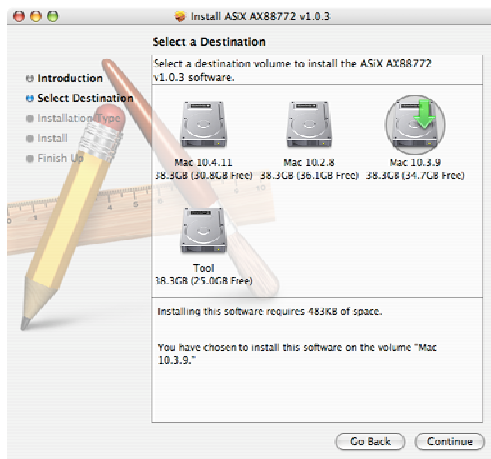
Für Mac 10.5 braucht kein Treiber installiert zu werden, denn dieses Betriebssystem ist Plug & Play-fähig.

Es folgen Richtlinien zur Installation unter Mac 10.3 oder 10.4:

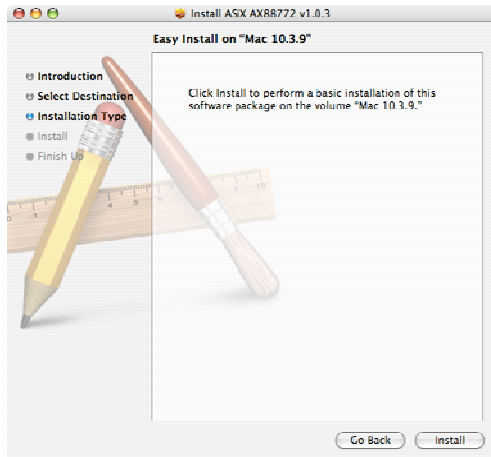
1. Legen Sie die beigelegte CD in das CD-ROM-Laufwerk. Wechseln Sie zu **Mac_OSX10.3** (oder Mac_OSX10.4, je nach Ihrem System). Das Installationsfenster blendet sich ein. Klicken Sie auf "Continue" (Fortfahren).



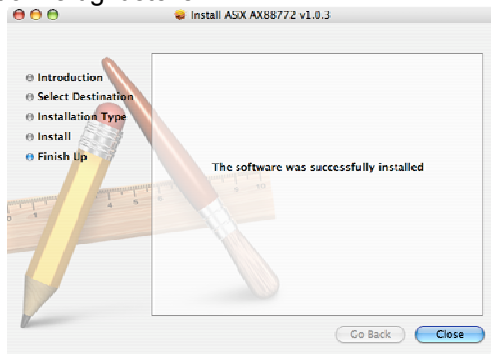
2. Wählen Sie ein Zielgerät, um den Treiber dort zu installieren. Klicken Sie auf "Continue" (Fortfahren), um fortzufahren.



3. Klicken Sie auf "Install" (Installieren), um mit der Installation zu beginnen.



4. Klicken Sie auf die Schaltfläche "Close" (Schließen), um die Installation fertigzustellen.



Wii-Setup

Verbinden Sie das USB-0202-Gerät mit einem freien USB-Anschluss am Wii-Gerät (Gamestation), wobei die Standardeinstellung der DHCP-Client-Modus ist.S

Configuration

Configuration Windows Vista

Il existe deux manières d'installer le logiciel sur Windows Vista lorsque le message "Nouveau matériel détecté" apparaît

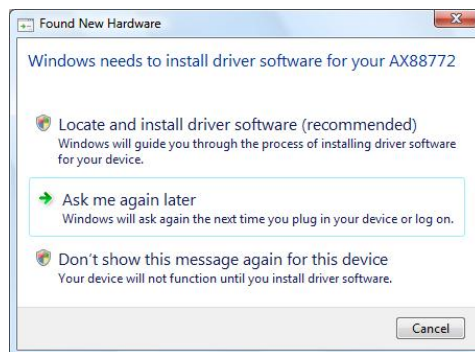
(1) Appuyez sur *Annuler* puis installez le pilote à partir du CD *LevelOne*.

(2) Localiser et installer le logiciel pilote

Veillez suivre les instructions suivantes :

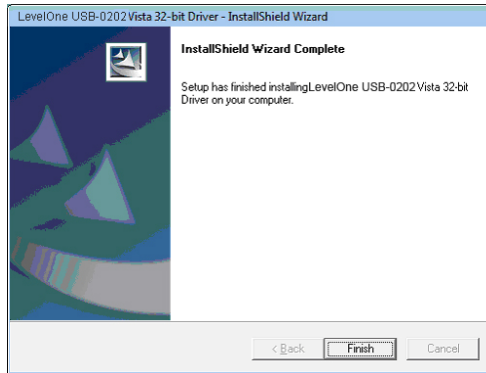
(1) *Installer le pilote à partir du CD levelOne*

1. La fenêtre "Assistant de nouveau matériel détecté" surgira. Cliquez sur "Cancel" (Annuler) pour fermer la fenêtre.



2. Insérez le CD-Rom LevelOne (NiveauUn) dans votre lecteur CD-Rom. Cliquez sur **Poste de travail → votre lecteur CD-Rom → Pilote → Réglage Vista 32 octets** Appuyez sur l'icône de réglage et l'installation du pilote démarrera.

3. Cliquez sur le bouton Terminer après avoir effectué l'installation.

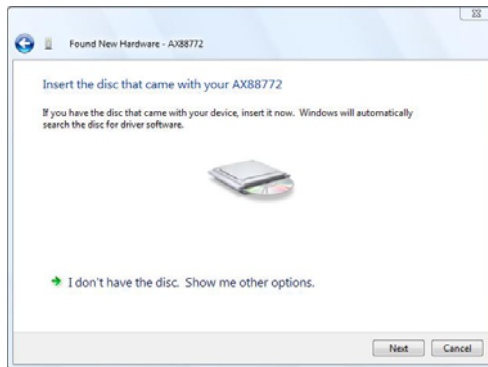


(2) Localiser et installer le logiciel pilote :

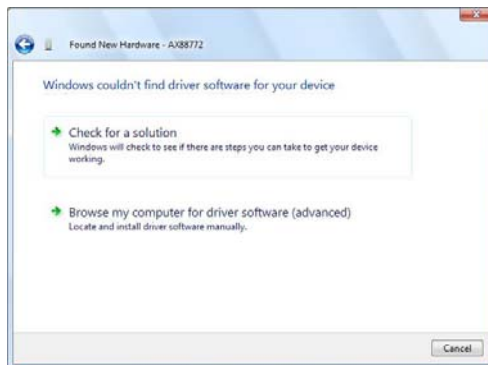
1. La fenêtre "nouveau matériel détecté" surgit. Sélectionnez "Localiser et installer le logiciel pilote".



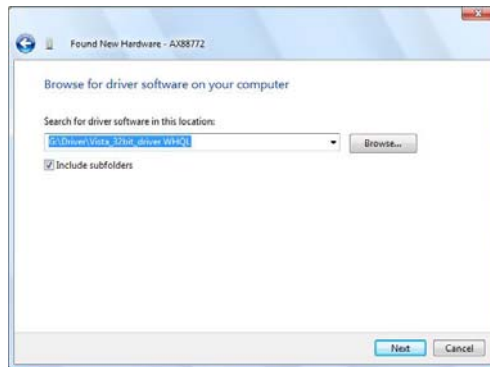
2. Sélectionnez "Je ne possède pas le disque. Indiquez-moi d'autres options". Puis, cliquez sur "Next" (Suivant) pour effectuer l'opération.



3. Sélectionnez “parcourir mon ordinateur pour rechercher le logiciel pilote”.



4. Insérez le CD pilote fourni. Cliquez sur le bouton “Parcourir” et sélectionnez Poste de travail → votre lecteur CD-ROM → Pilote → Pilote WHQL_Vista_32octets.
Cliquez sur “Next” (Suivant) pour effectuer l’opération.



5. Cliquez sur le bouton "Close" (Fermer) pour terminer l'installation

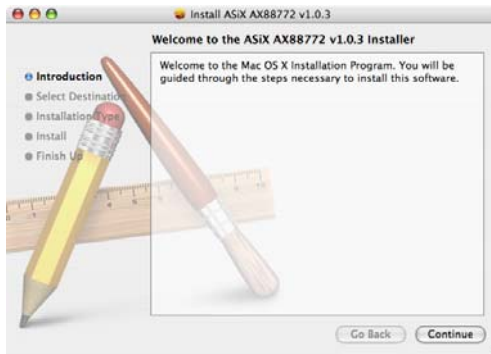


Configuration Mac OS

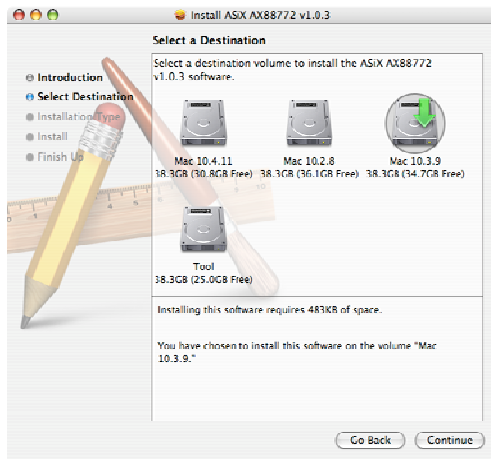
Il n'est pas nécessaire d'installer le pilote sur Mac10.5, le programme est prêt à l'emploi.

Voici les consignes d'installation pour Mac 10.3 ou 10.4:

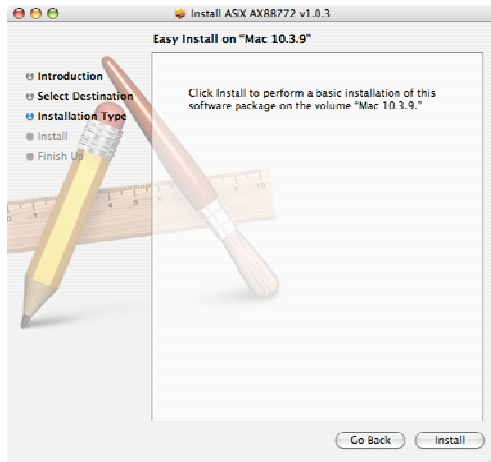
1. Insérez le CD fourni dans votre lecteur CD. Parcourez jusqu'à **Mac_OSX10.3** (ou Mac_OSX10.4, selon votre système). La fenêtre d'installation surgira. Cliquez sur "Continue"(Continuer).



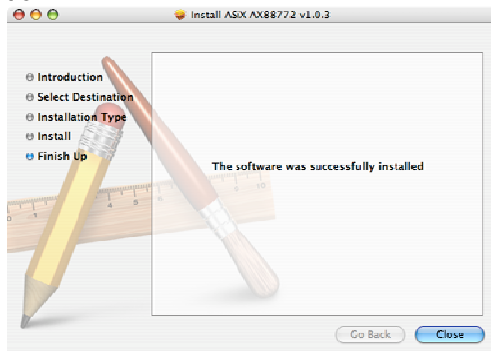
2. Sélectionnez une destination pour installer le pilote. Cliquez sur "Continue"(Continuer) pour effectuer l'opération.



3. Cliquez sur "Install" (Installer) pour démarrer l'installation.



4. Cliquez sur le bouton “Close” (Fermer) pour terminer l’installation.



Configuration Wii

Reliez simplement le USB-0202 à un port USB disponible de la Wii (console de jeux) ; le réglage par défaut est Mode client DHCP.

Instalación

Instalación en Windows Vista

Existen dos formas de instalar el software en Windows Vista al aparecer el mensaje de "Nuevo hardware encontrado"

- (1) *Pulse Cancelar e instale el controlador desde el CD de LevelOne*
- (2) *Localice e instale el software controlador.*

Consulte las instrucciones siguientes:

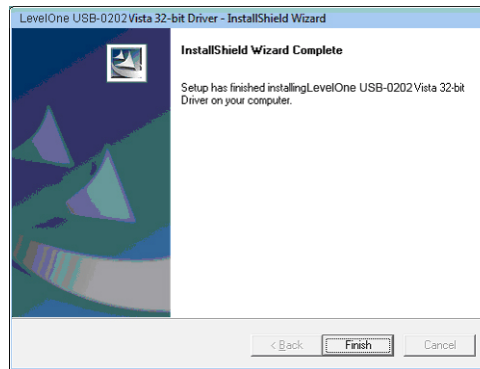
- (1) *Instalar el controlador desde el CD de LeveOne.*

1. Aparecerá la ventana del "Asistente para nuevo hardware encontrado". Haga clic en "Cancelar" (Cancelar) para cerrar la ventana.



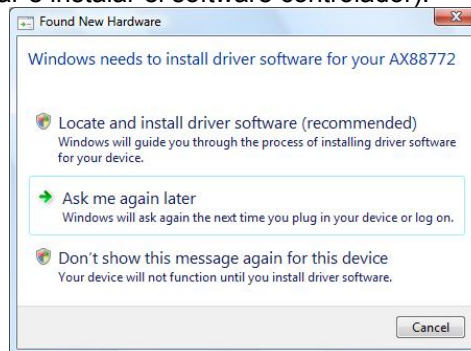
2. Inserte el CD-Rom de LevelOne en su unidad de CD-Rom. Haga clic en **Mi PC → Su unidad de CD-Rom → Driver → Vista 32 bit set up**. Presione el icono de instalación para comenzar a instalar el controlador.

3. Haga clic en "Finish" (Finalizar) una vez terminada la instalación.

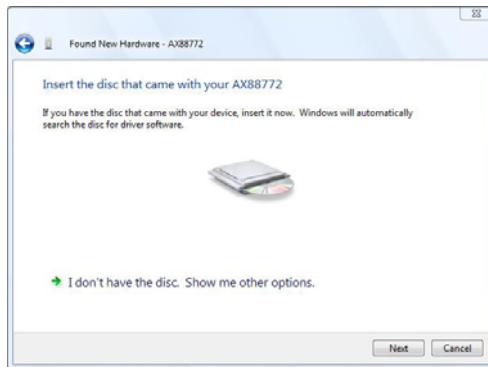


(2) Localice e instale el software controlador:

1. Aparecerá la ventana del "Asistente para nuevo hardware encontrado". Seleccione "Locate and install driver software" (Localizar e instalar el software controlador).



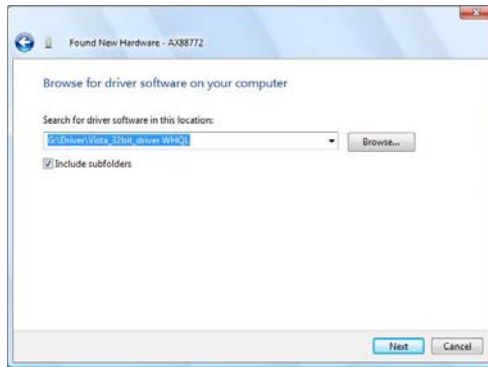
2. Seleccione "I don't have a disc. Show me other options" (No tengo el disco. Mostrar otras opciones). Haga clic entonces en "Next" (Siguiente) para continuar.



3. Seleccione "Browse my computer for driver software" (Buscar software controlador en mi equipo).



4. Inserte el CD de controladores suministrado. Pulse el botón "Browse" (Examinar) y seleccione Mi PC → Su unidad de CD-ROM → Driver → Vista_32bit_driver WHQL.
Haga clic en "Next" (Siguiente) para continuar.



5. Haga clic en el botón "Close" (Cerrar) para finalizar la instalación.



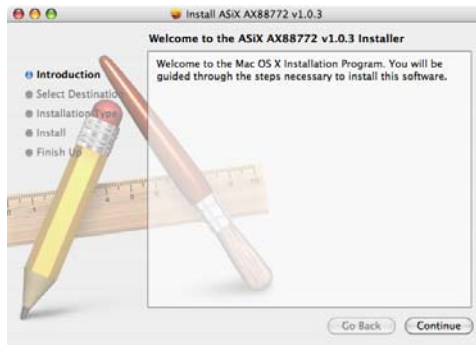
Instalación en Mac OS

No es necesario instalar el controlador en Mac 10.5, ya que se encuentra preparado para la conexión.

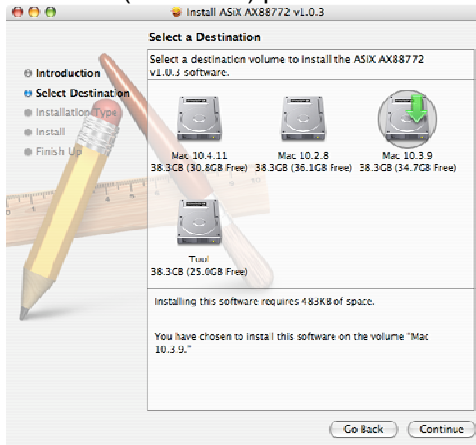
A continuación se muestran las instrucciones de instalación para Mac 10.3 o 10.4:

1. Inserte el CD suministrado en su unidad de CD-Rom. Abra **Mac_OSX10.3** (o Mac_OSX10.4, dependiendo de su sistema).

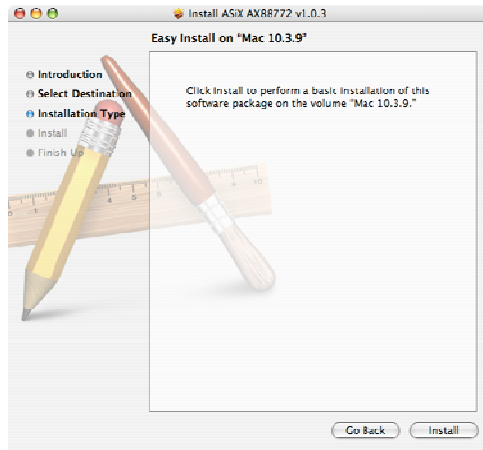
Se abrirá la ventana de instalación. Haga clic en "Continue" (Continuar).



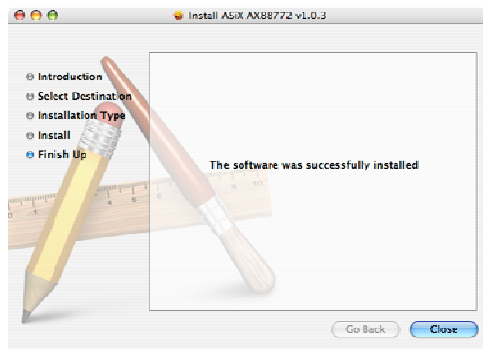
2. Seleccione un destino en el que instalar el controlador. Haga clic en "Continue" (Continuar) para continuar.



3. Haga clic e "Install" (Instalar) para iniciar la instalación.



4. Haga clic en el botón "Close" (Cerrar) para finalizar la instalación.



Configuración en Wii

Sólo es necesario conectar el USB-0202 a un puerto USB libre de su Wii (consola de videojuegos) con la configuración predeterminada en modo cliente DHCP.

Instelling

Instelling Windows Vista

U kunt de software voor Windows Vista op twee manieren installeren wanneer het venster "Found New Hardware" (Nieuwe hardware gevonden) verschijnt.

(1) Klik op **Cancel** (Annuleren) en installeer het stuurprogramma vanaf de cd van LevelOne.

(2) Zoek en installeer de stuurprogrammasoftware

Volg de onderstaande richtlijnen:

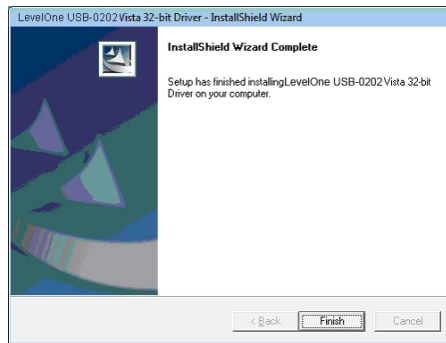
(1) Installeer het stuurprogramma vanaf de cd van LevelOne.

1. Het venster "Found New Hardware Wizard (Wizard Nieuwe hardware gevonden) wordt weergegeven. Klik op "Cancel" (Annuleren) om het venster te sluiten.



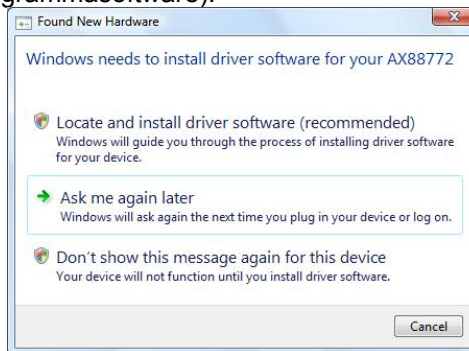
2. Plaats de cd van LevelOne in uw cd-romstation. Klik op **My Computer (Deze computer) → uw cd-romstation → Driver (Stuurprogramma) → Vista 32 bit set up (Installatie Vista 32-bits)**. Druk op het installatiepictogram om de installatie van het stuurprogramma te starten.

3. Klik op de knop Finish (Voltooien) om de installatie te voltooien.

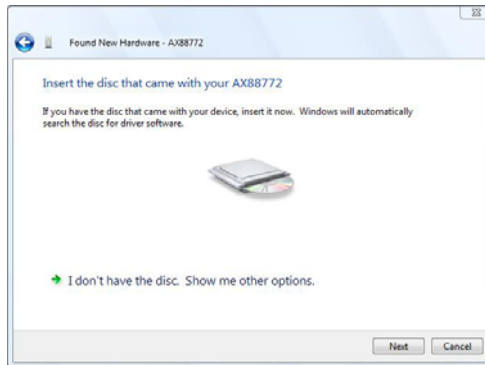


(2) Zoek en installeer de stuurprogramma's software:

1. Het venster "Found New Hardware (Nieuwe hardware gevonden) wordt weergegeven. Selecteer "Locate and install driver software" (Zoek en installeer de stuurprogramma's software).



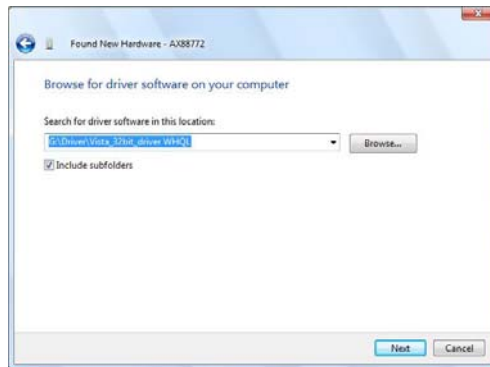
2. Selecteer "I don't have the disc. Show me other options" (Ik heb geen schijf. Toon andere opties). Klik daarna op "Next" (Volgende) om door te gaan.



3. Select "Browse my computer for driver software" (Op mijn computer zoeken naar stuurprogramma's).



4. Plaats de bijgeleverde cd met het stuurprogramma. Klik op de knop "Browse" (Bladeren) en selecteer My Computer (Deze computer) → uw cd-romstation → Driver (Stuurprogramma) → Vista_32bit_driver WHQL (WHQL-stuurprogramma Vista 32-bits)
Klik op "Next" (Volgende) om door te gaan.



5. Klik op de knop "Close" (Sluiten) om de installatie te voltooien.

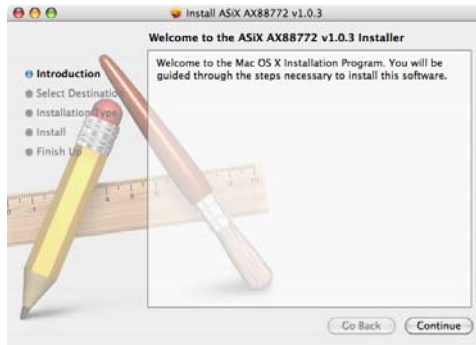


Instelling Mac OS

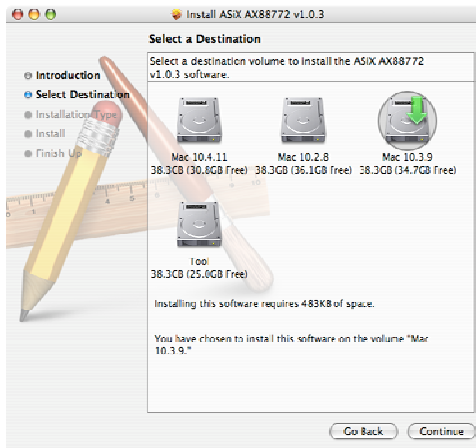
U hoeft het stuurprogramma niet te installeren op de Mac 10.5, aangezien dit plug & play is.

Hieronder vindt u de installatierichtlijnen voor Mac 10.3 of 10.4:

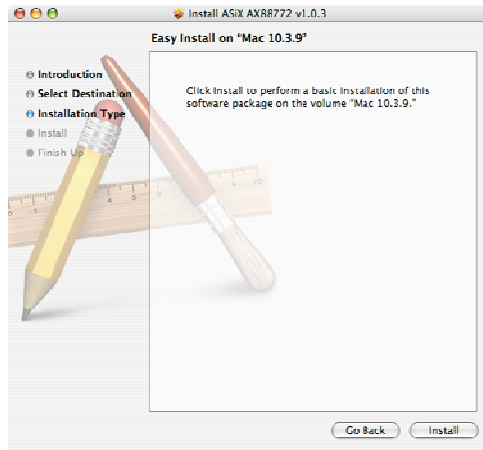
1. Plaats de bijgeleverde cd in uw cd-romstation. Blader naar **Mac_OSX10.3** (of Mac_OSX10.4, afhankelijk van uw systeem). Het installatievenster wordt weergegeven. Klik op "Continue" (Doorgaan).



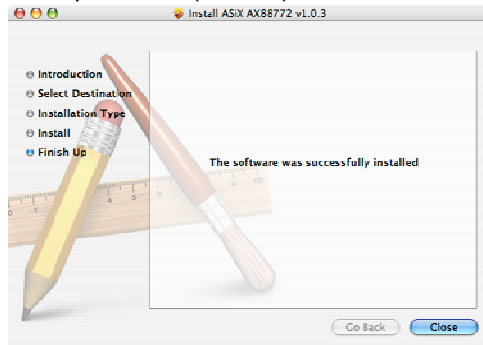
2. Selecteer een bestemming waar u het stuurprogramma wilt installeren. Klik op "Continue" (Doorgaan) om door te gaan.



3. Klik op "Install" (Installeren) om de installatie te starten.



4. Klik op de knop "Close" (Sluiten) om de installatie te voltooien.



Instelling Wii

Sluit de USB-0202 aan op een vrije USB-poort van de Wii (Gamestation). De standaardinstelling is de DHCP-clientmodus.

Opsætning

Windows Vista opsætning

Windows Vista kan installeres på to måder, når "Fundet nyt hardware" ses:

- (1) Tryk på *Cancel (Annuller)* og installer driver fra LevelOne's cd
- (2) Find og installer driver-software

Gør som følger:

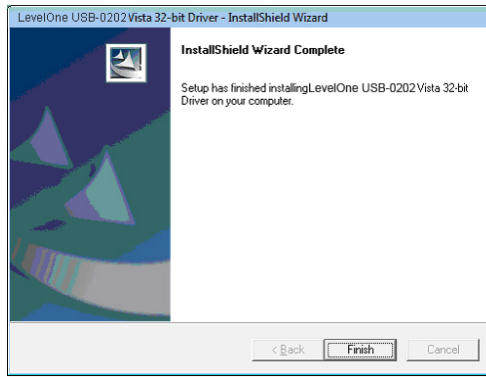
- (1) Installer driver fra levelOne's cd

1. "Fundet nyt hardware" vinduet popper op. Klik på "Cancel" (Annuller) for at lukke vinduet.



2. Anbring LevelOne cd-rom'en i cd-rom drevet. Klik på **Min computer** → **dit cd-rom drev** → **Driver** → **Vista 32 bit opsætning**. Tryk på sæt op-ikonen, som starter installationen af driveren.

3. Klik på Finish (Afslut), når installationen er fuldført.

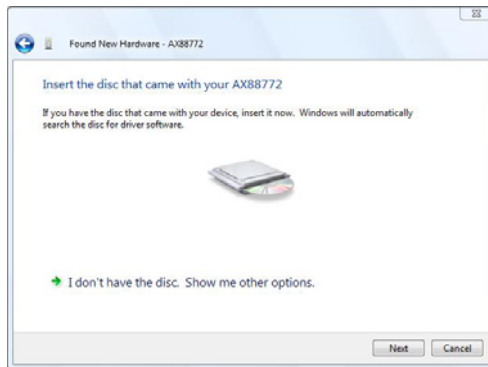


(2) *Find og installer driver-software* :

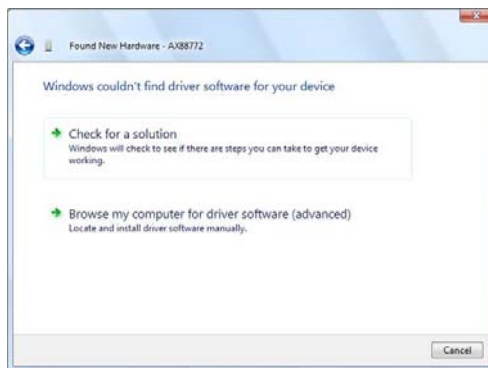
1. "Fundet nyt hardware" vinduet popper op. Vælg "Find og installer driver-software".



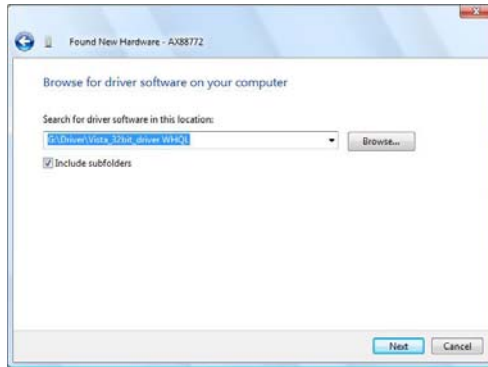
2. Vælg "Jeg har ikke disken. Vis mig andre muligheder". Klik derefter på "Next" (Næste) for at fortsætte.



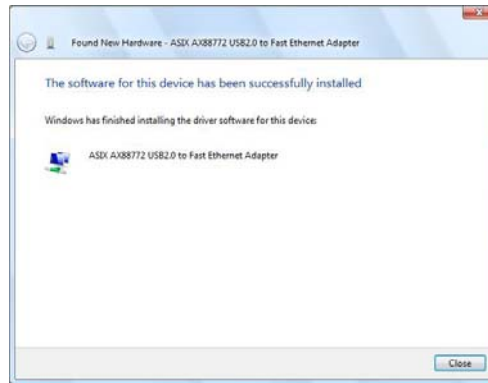
3. Vælg "Gennemse min computer for driver-software".



4. Anbring den medfølgende driver-cd. Klik på "Gennemse" og vælg Computer → dit cd-rom drev → Driver → Vista_32bit_driver WHQL
Klik på "Next" (Næste) for at fortsætte.



5. Klik på "Close" (Luk) for at afslutte installationen

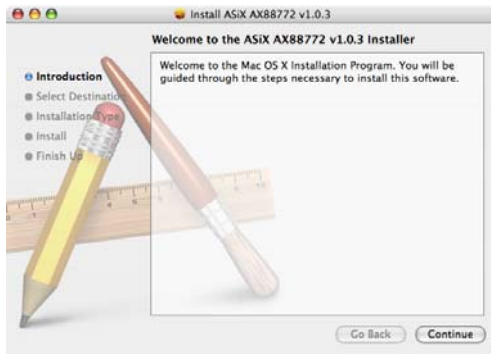


Mac OS opsætning

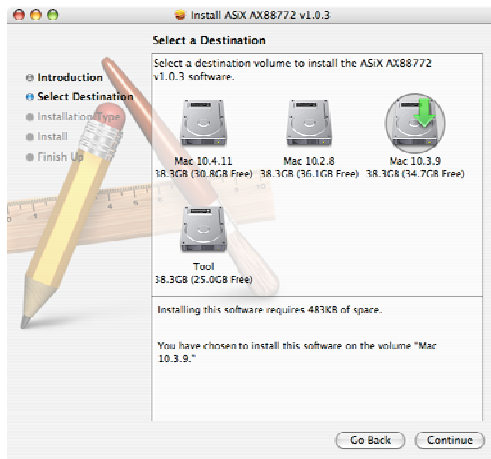
Det er ikke nødvendigt at installere driver på Mac10.5. Det er "plug and play".

Nedenfor findes retningslinjerne for Mac 10.3 og 10.4 installation:

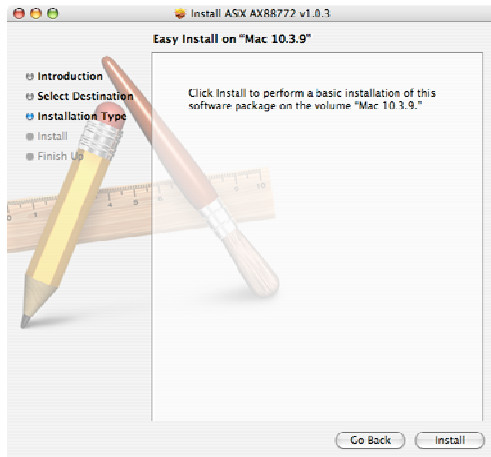
1. Anbring den medfølgende cd i cd-rom drevet. Søg efter **Mac_OSX10.3** (eller Mac_OSX10.4, afhængigt af systemet). Installationsvinduet popper op. Klik på "Continue" (Fortsæt).



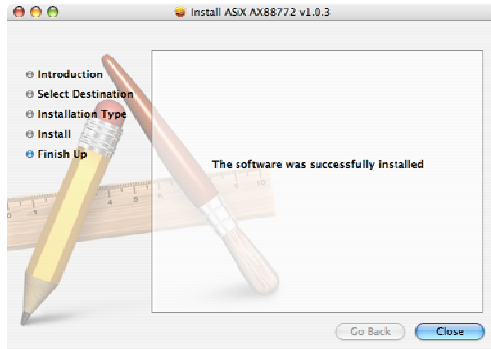
2. Vælg en destination, hvor driveren skal installeres. Klik på "Next" (Næste) for at fortsætte.



3. Klik på "Install" (Installer) for at begynde installationen.



4. Klik på "Close" (Luk) for at afslutte installationen



Wii opsætning

Forbind USB-0202 til en ledig USB port på Wii (game-station).
Standardindstillingen er DHCP klienttilstand.

Configurazione

Configurazione di Windows Vista

Due sono le modalità disponibili per installare il software in Windows Vista quando viene "Trovato nuovo Hardware"

(1) Premere Annulla quindi installare il driver dal CD di LevelOne

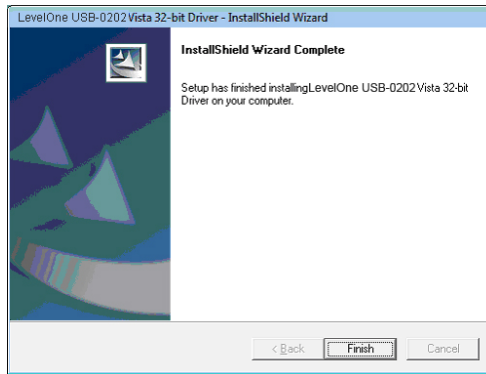
(2) Individuare e installare il driver del software
Fare riferimento alle seguenti istruzioni:

(1) Installare il driver dal CD di levelOne

1. Si apre al finestra "Installazione guidata nuovo hardware". Fare clic su "Annulla" per chiudere la finestra.



2. Inserire il CD-Rom LevelOne nel lettore ottico. Fare clic su **Computer → unità CD-Rom → Driver → Configurazione Vista 32 bit**, verrà avviata l'installazione del driver.
3. Completata l'installazione fare clic sul pulsante Fine.

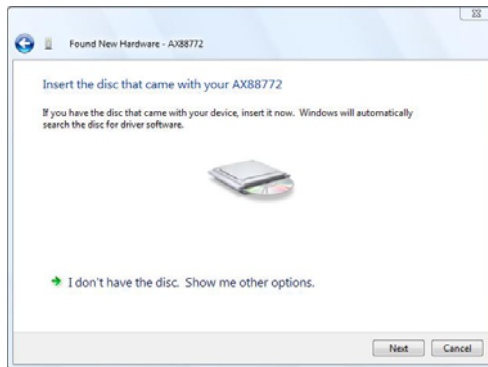


(2) Individuare e installare il software del driver.

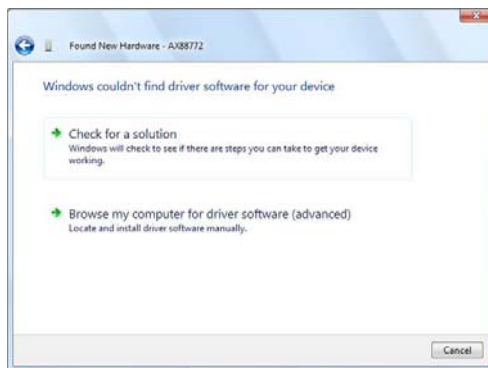
1. Si apre al finestra "Trovato nuovo hardware". Selezionare "Cerca e installa nuovo software".



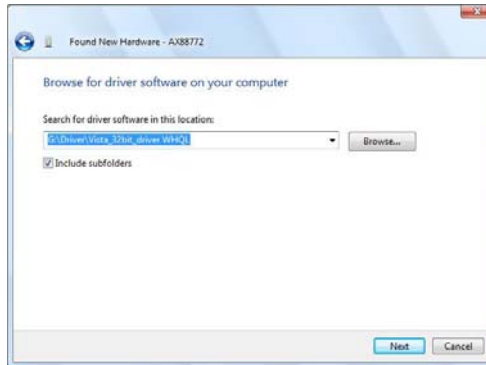
2. Selezionare "Disco non disponibile. Mostra altre opzioni". Quindi, fare clic su "Avanti" per continuare.



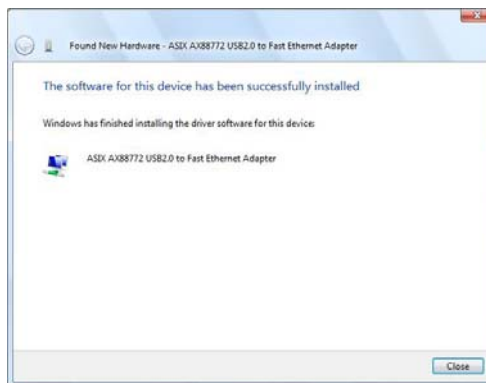
3. Selezionare "Sfogli computer per software driver".



4. Inserire il CD driver fornito. Fare clic sul pulsante "Sfogli" e selezionare Computer → unità CD-ROM → Driver → Vista_32bit_driver WHQL
Fare clic su "Avanti" per continuare.



5. Fare clic sul pulsante “Fine” per completare l’installazione.

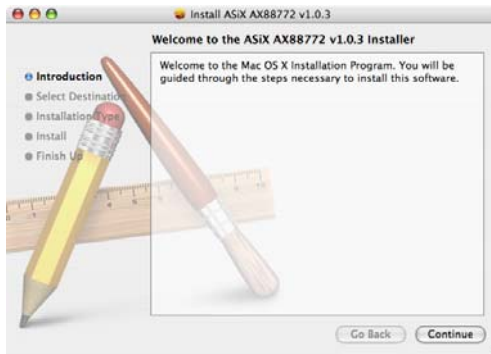


Configurazione sistema operativo Mac

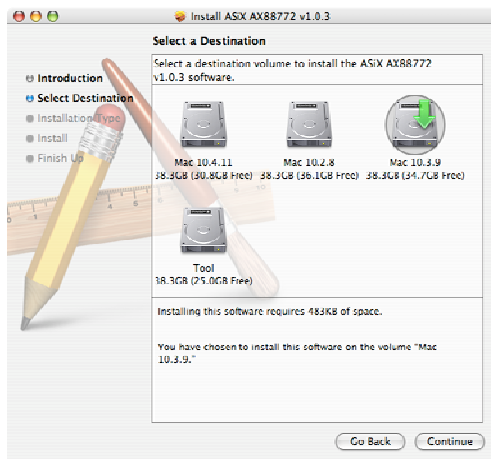
Non è necessario installare il driver su Mac10.5, è di tipo plug and play.

Di seguito sono illustrate le linee guida per l’installazione su Mac 10.3 o 10.4:

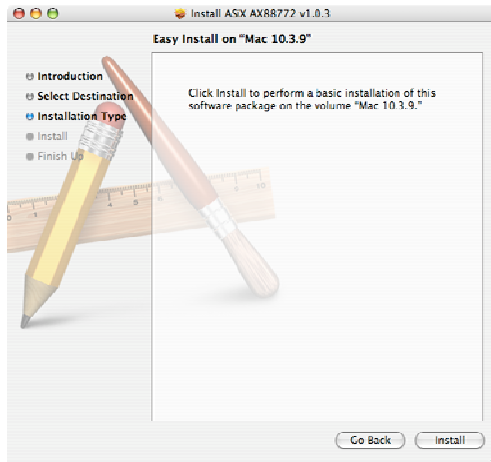
1. Inserire il CD fornito nel lettore ottico. Sfolgiare **Mac_OSX10.3** (o Mac_OSX10.4, dipende dal sistema). Si apre la finestra di installazione. Fare clic su “Continue” (Continua).



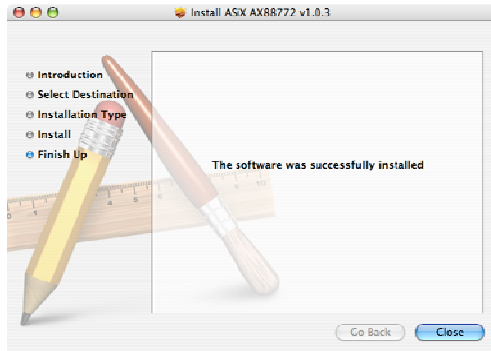
2. Selezionare la destinazione dell'installazione del driver. Fare clic su "Continue" (Continua) per continuare.



3. Fare clic su "Install" (Installa) per avviare l'installazione.



4. Fare clic sul pulsante “Chiudi” per terminare l’installazione.



Configurazione Wii

È sufficiente collegare la USB-0202 ad una porta USB libera sulla Wii (Console di giochi), l’impostazione predefinita è modalità client DHCP.

Ρύθμιση

Εγκατάσταση των Windows Vista

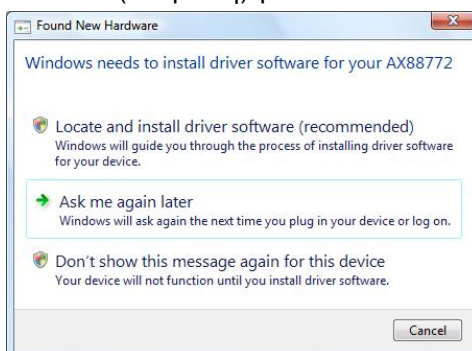
Υπάρχουν δύο τρόποι εγκατάστασης της συσκευής στα Windows Vista όταν "Εντοπιστεί νέο υλικό"

- (1) Πατήστε **Ακύρωση** κατόπιν εγκαταστήστε τη μονάδα από το CD της LevelOne
- (2) Εντοπίστε και εγκαταστήστε το λογισμικό της συσκευής

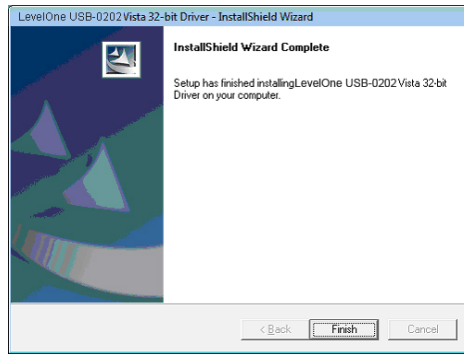
Ανατρέξτε στις παρακάτω οδηγίες:

- (1) Εγκαταστήστε τη μονάδα από το CD της LevelOne

1. Εμφανίζεται το παράθυρο διαλόγου "Εντοπίστηκε νέο υλικό". Πατήστε "Cancel" (Ακύρωση) για να κλείσετε το παράθυρο.



2. Τοποθετήστε το CD LevelOne στη μονάδα CD-ROM. Πατήστε στο **Ο Υπολογιστής μου** → **η μονάδα CD-Rom σας** → **Μονάδα** → **εγκατάσταση των Vista 32 bit**. Πατήστε στο εικονίδιο εγκατάστασης κατόπιν θα ξεκινήσει η εγκατάσταση της μονάδας.
3. Πατήστε στο πλήκτρο Τέλος αφού ολοκληρωθεί η εγκατάσταση.

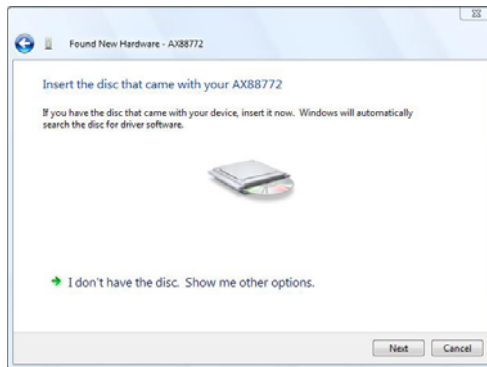


(2) *Εντοπίστε και εγκαταστήστε το λογισμικό της μονάδας:*

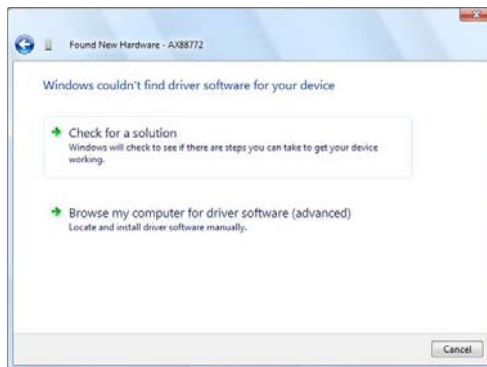
1. Εμφανίζεται το παράθυρο διαλόγου "Εντοπίστηκε νέο υλικό". Επιλέξτε "Εντοπίστε και εγκαταστήστε το λογισμικό της μονάδας"



2. Επιλέξτε "Δεν έχω τον δίσκο. Δείξε μου άλλες επιλογές". Κατόπιν, πατήστε "Next" (Επόμενο) για να προχωρήσετε.

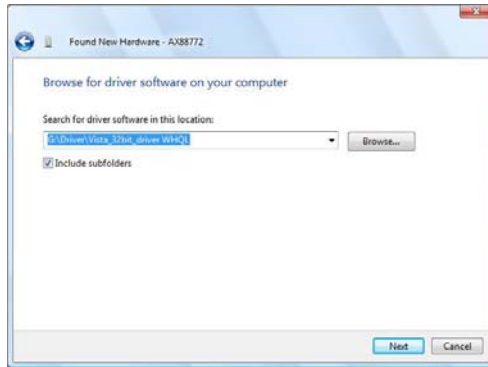


3. Επιλέξτε "Πλοήγηση στον υπολογιστή μου για το λογισμικό της μονάδας"

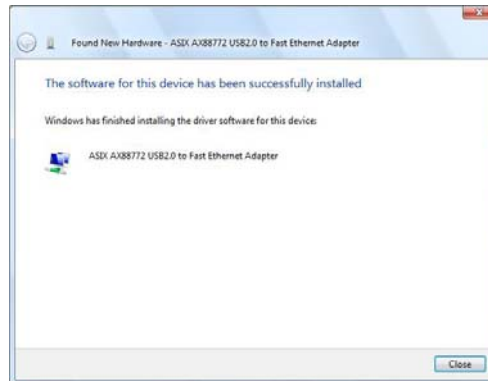


4. Εισάγετε το CD της μονάδας που περιέχεται στη συσκευασία
Πατήστε το πλήκτρο "Πλοήγηση" και επιλέξτε Υπολογιστής → η μονάδα του CD-ROM σας → Μονάδα → Vista_32bit_driver WHQL

Πατήστε "Next" (Επόμενο) για να προχωρήσετε.



5. Πατήστε το πλήκτρο "Close" (Κλείσιμο) για να ολοκληρωθεί η εγκατάσταση



Εγκατάσταση σε Mac OS

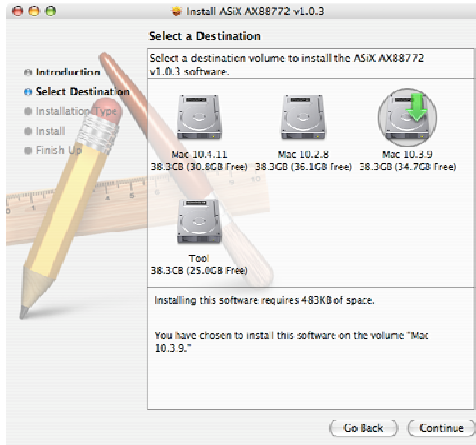
Δεν χρειάζεται να εγκαταστήσετε τη μονάδα στο Mac10.5 , πρόκειται για ένα plug and play πρόγραμμα.

Ακολουθούν οι οδηγίες εγκατάστασης για το Mac 10.3 ή 10.4:

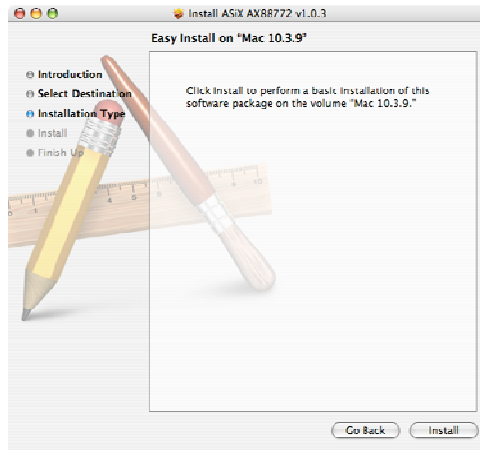
1. Εισάγετε το CD που περιλαμβάνεται στη συσκευασία στη μονάδα CD-ROM. Πλοηγηθείτε στο **Mac_OSX10.3** (ή το Mac_OSX10.4, εξαρτάται από το σύστημά σας). Εμφανίζεται το παράθυρο εγκατάστασης. Πατήστε "Continue" (Συνέχεια).



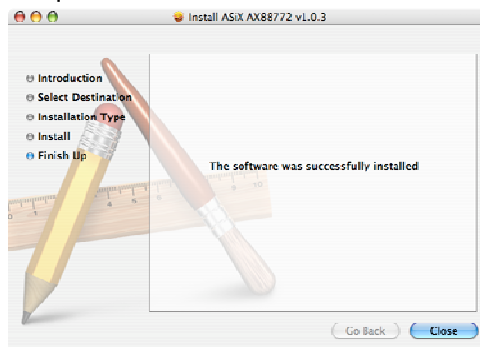
2. Επιλέξτε έναν προορισμό για να εγκαταστήσετε τη μονάδα. Πατήστε "Continue" (Συνέχεια) για να προχωρήσετε.



3. Πατήστε "Install" (Εγκατάσταση) για να ξεκινήσει η εγκατάσταση.



4. Πατήστε το πλήκτρο "Close" (Κλείσιμο) για να ολοκληρωθεί η εγκατάσταση.



Εγκατάσταση Wii

Απλά συνδέστε το USB-0202 σε μία ελεύθερη θύρα USB του Wii (Σταθμός παιχνιδιών) και η προεπιλεγμένη ρύθμιση είναι η λειτουργία πελατών DHCP.

Instalação

Instalação do Windows Vista

Existem duas maneiras de instalar o software Windows Vista ao aparecer "Found New Hardware" (Novo Hardware Encontrado)

(1) Pressione **Cancel (Cancelar)** e em seguida instale o controlador a partir do CD LevelOne.

(2) Localize e instale o software do controlador

Consulte às seguintes instruções:

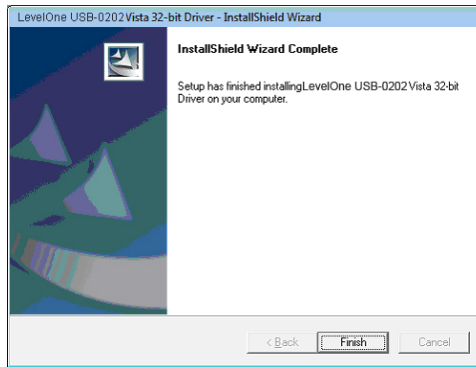
(1) Instale o controlador a partir do CD LevelOne

1. A janela "Found New Hardware Wizard" (Assistente do Novo Hardware Encontrado) aparece. Clique "Cancel" (Cancelar) para fechar a janela.



2. Insira o CD-Rom do LevelOne na sua unidade de CD-Rom. Clique em **My Computer (Meu Computador) → sua unidade de CD-Rom → Controlador → Vista 32 bit set up (Vista 32 bit instalação)**. Pressione o ícone de instalação e em seguida ele iniciará a instalar o controlador.

3. Clique no botão Finish (Terminar) depois de completar a instalação.

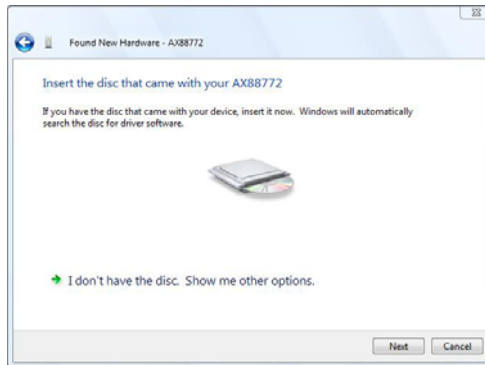


(2) Localize e instale o software do controlador:

1. A janela "Found New Hardware" (Novo Hardware Encontrado) aparece. Selecione "Locate and install driver software" (Localizar e instalar o software do controlador).



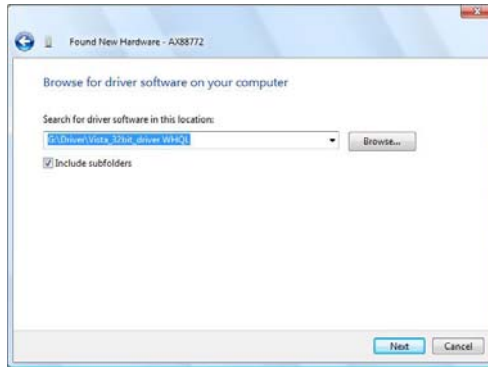
2. Selecione "I don't have the disc. Show me other options" (Eu não tenho o disco. Mostre-me outras opções). Em seguida, clique "Next" (Seguinte) para proceder.



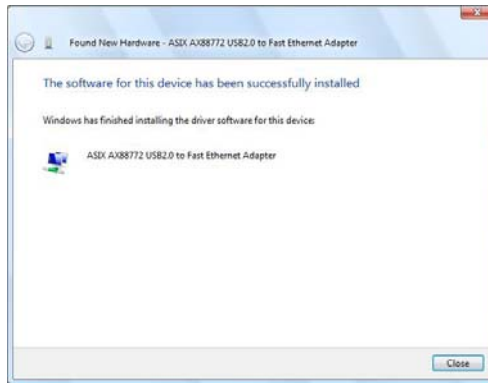
3. Selecione "Browse my computer for driver software" (Procure o software do controlador no meu computador).



4. Insira o CD do controlador fornecido. Clique no botão "Browse" (Procurar) e selecione Computer (Computador) → sua unidade de CD-ROM → Controlador → Vista_32bit_driver WHQL (Vista_32bit_instalação do WHQL).
Clique "Next" (Seguinte) para proceder.



5. Clique no botão “Close” (Fechar) para terminar a instalação.

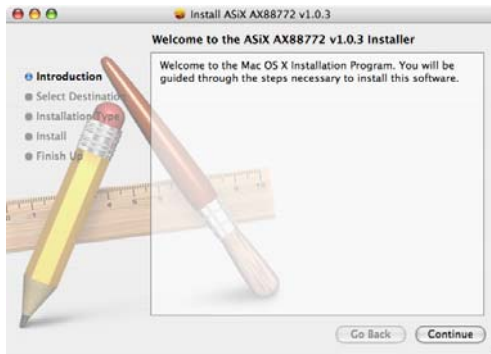


Configuração de SO Mac

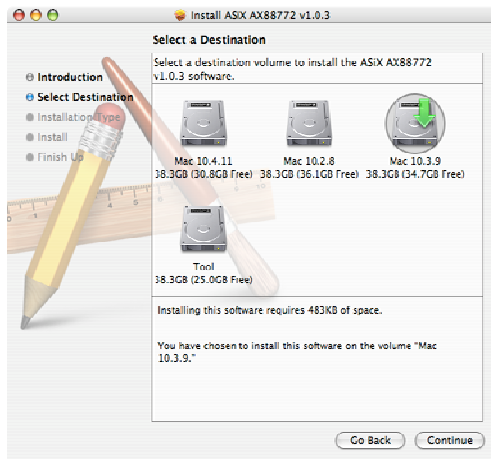
Não é necessário instalar o controlador no Mac10.5 , simplesmente conecte e use.

Abaixo estão as instruções para instalação do Mac 10.3 ou 10.4:

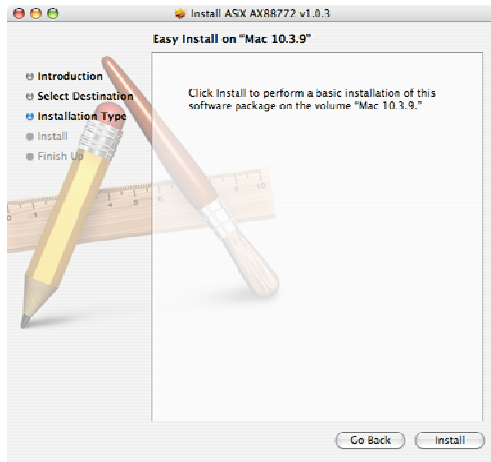
1. Insira o CD fornecido na sua unidade de CD-Rom. Navegue ao **Mac_OSX10.3** (ou Mac_OSX10.4, que depende do seu sistema). A janela de instalação aparece. Clique “Continue” (Continuar).



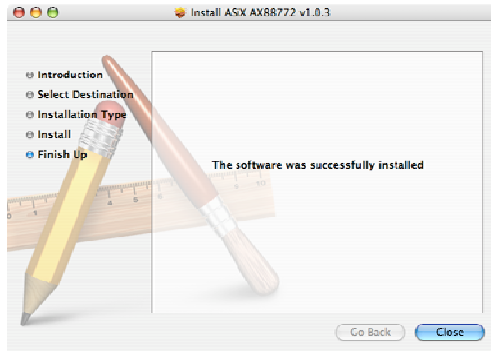
2. Selecione um destino para instalar o controlador. Clique "Continue" (Continuar) para proceder.



3. Clique "Install" (Instalar) para iniciar a instalação.



4. Clique no botão “Close” (Fechar) para terminar a instalação.



Configuração de Wii

Simplemente conecte o USB-0202 à uma porta livre USB do Wii (Estação de Jogo) e a configuração padrão estará no modo cliente DHCP.

Inställning

Inställning av Windows Vista

Det finns två sätt att installera Windows Vista-programvaran när "Found New Hardware"(ny maskinvara hittad) visas.

- (1) Tryck på Cancel (avbryt) och installera sedan drivrutinen från LevelOne-CD-skivan
- (2) Leta reda på och installera drivrutinsprogramvara.

Se följande instruktion:

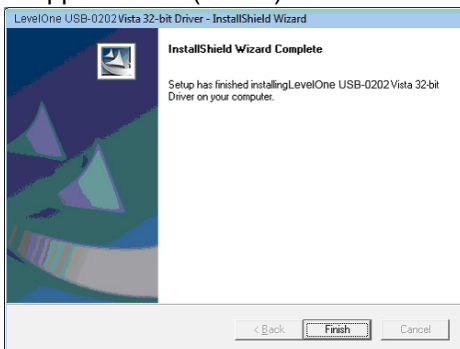
(1) Installera drivrutin från LevelOn-CD-skivan.

1. Fönstret "Found New Hardware Wizard" (guide för ny maskinvara) visas Klicka på "Cancel" (avbryt) för att stänga fönstret.



2. Sätt in LevelOne-CD-ROM-skivan i din CD-ROM-enhet. Klicka på **My Computer (den här datorn) → din CD-ROM-enhet → Driver (drivrutin) → Vista 32 bit set up (Vista 32-bitars installation)**. Tryck på installationsikonen för att börja installera drivrutinen.

3. Tryck på knappen Finish (slutför) efter slutförd installation.

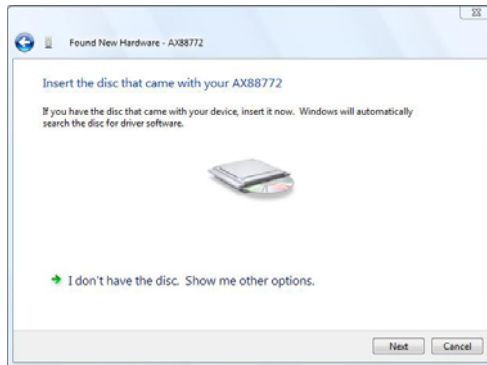


(2) *Leta reda på och installera drivrutinsprogramvara:*

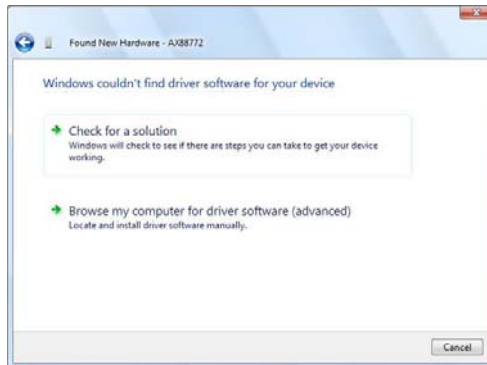
1. Fönstret "Found New Hardware Wizard" (ny maskinvara hittad) visas. Välj "Locate and install driver software" (leta reda på och installera drivrutinsprogramvara).



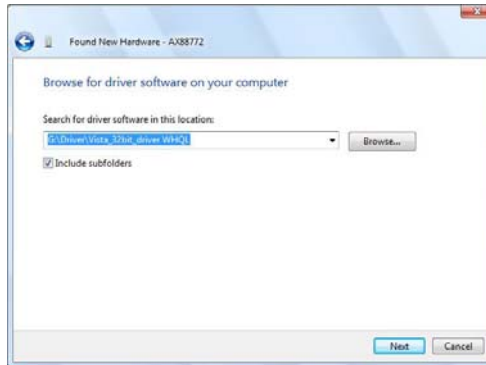
2. Välj "I don't have the disc. Show me other options" (jag saknar skivan. Visa andra alternativ). Klicka därefter på "Next" (Nästa) för att fortsätta.



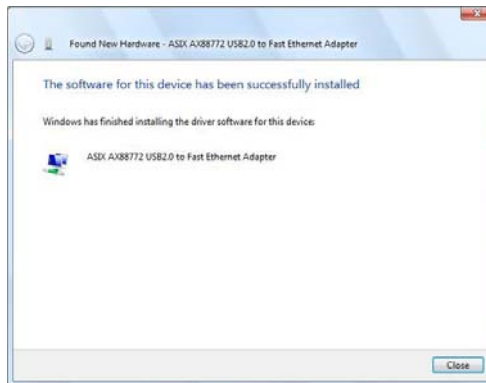
3. Välj "Browse my computer for driver software" (sök i datorn efter drivrutinsprogramvara).



4. Sätt in den medföljande drivrutins-CD-skivan. Klicka på knappen "Browse" (sök) och välj Computer (dator) → din CD-ROM-enhet → Driver (drivrutin) → Vista_32bit_driver WHQL
Klicka på "Next" (nästa) för att fortsätta.



5. Klicka på knappen "Close" (stäng) för att slutföra installationen.



Mac OS-installation

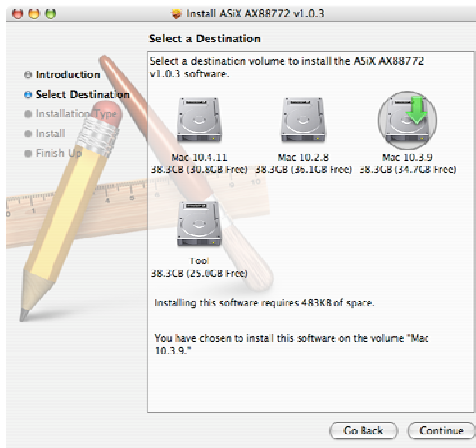
Du behöver inte installera någon drivrutin i Mac10.5, det är "plug and play".

Nedan följer riktlinjer för Mac 10.3- eller 10.4-installation .

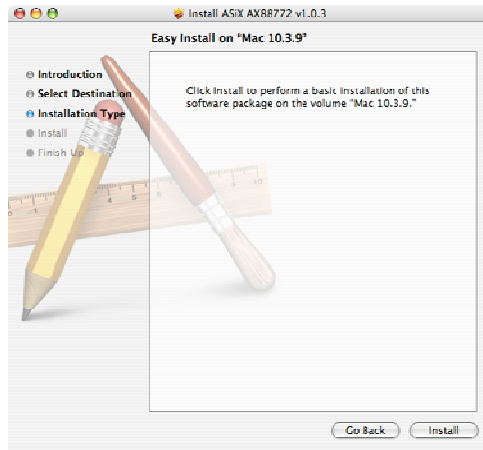
1. Sätt i den medföljande support-CD-skivan i CD-ROM-enheten. Gå till **Mac_OSX10.3** (eller Mac_OSX10.4, vilketdera beror på ditt system). Installationsfönstret visas. Klicka på "Continue" (fortsätt).



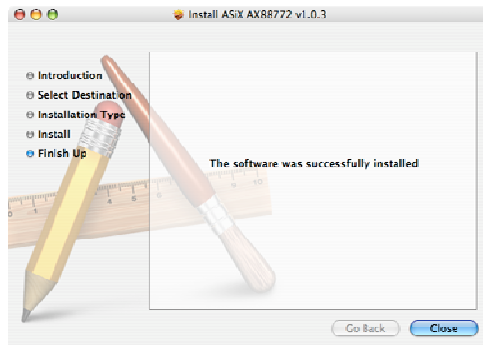
2. Välj en destinationsplats där drivrutinen ska installeras. Klicka på "Continue" (fortsätt) för att fortsätta.



3. Klicka på "Install" (installera) för att starta installationen.



4. Klicka på knappen "Close" (stäng) för att slutföra installationen.



Wii-installation

Anslut USB-0202 till en ledig USB-port för Wii (Game Station) och standardinställning är DHCP-klientläge.

Nastavitev

Namestitev Windows Vista

Ob pozivu "Found New Hardware" (Najdena je bila nova programska oprema) v Windows Vista, lahko programsko opremo namestite na dva načina:

(1) Pritisnite Cancel (Prekliči) in namestite gonilnik s CD-ja

LevelOne

(2) Določite in namestite programsko opremo gonilnika

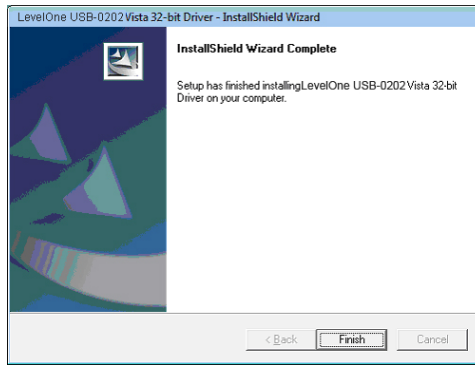
Prosimo, upoštevajte naslednja navodila:

(1) Namestite gonilnik s CD-ja LevelOne

1. Pojavilo se bo okno "Found New Hardware Wizard" (Čarovnik za najdeno novo strojno opremo). Kliknite "Cancel" (Prekliči) da zaprete okno.



2. Vstavite CD LevelOne v pogon CD. Kliknite **My Computer (Moj računalnik) → izberite CD-pogon → Driver (Gonilnik) → Vista 32 bit set up**. Pritisnite ikono za namestitev in nameščanje gonilnika se bo začelo.
3. Po končanem postopku nameščanja kliknite gumb Finish (Dokončaj).

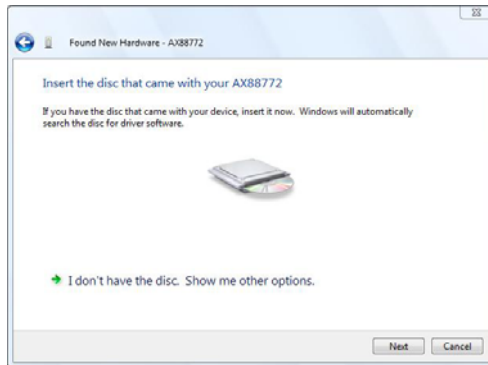


(2) *Določite in namestite programsko opremo gonilnika:*

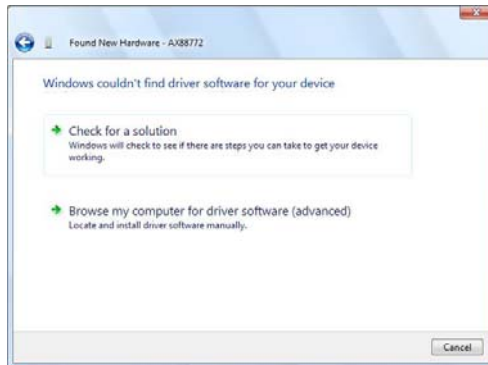
1. Pojavilo se bo okno "Found New Hardware" (Najdena nova strojna oprema). Izberite "Določi in namesti gonilnik programske opreme".



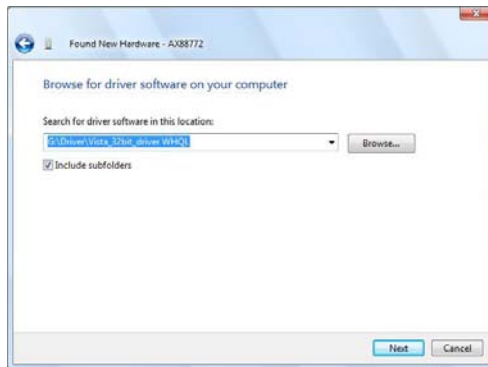
2. Izberite "I don't have the disc. Show me other options" (Nimam diska. Pokaži mi druge možnosti). Nato kliknite "Next" (Naprej) za nadaljevanje.



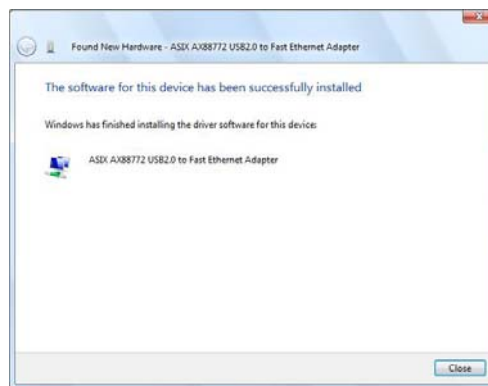
3. Izberite "Browse my computer for driver software" (Preišči moj računalnik za programsko opremo gonilnika).



4. Vstavite priloženi CD z gonilnikom. Kliknite gumb "Browse" (Prebrskaj) in izberite Computer (Moj računalnik) → CD-pogon → Driver (Gonilnik) → Vista_32bit_driver WHQL
Kliknite "Next" (Naprej) za nadaljevanje.



5. Kliknite gumb "Close" (Zapri) nadaljevanje namestitve



Namestitev OS Mac

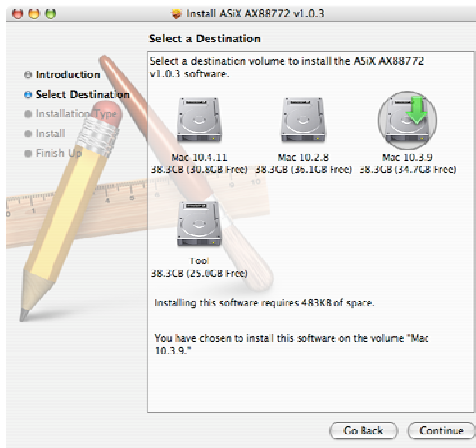
Namestitev gonilnika na Mac10.5 ni potrebna, slednji opremo prepozna samodejno.

Spodaj so navodila za nameščanje na Mac 10.3 ali 10.4:

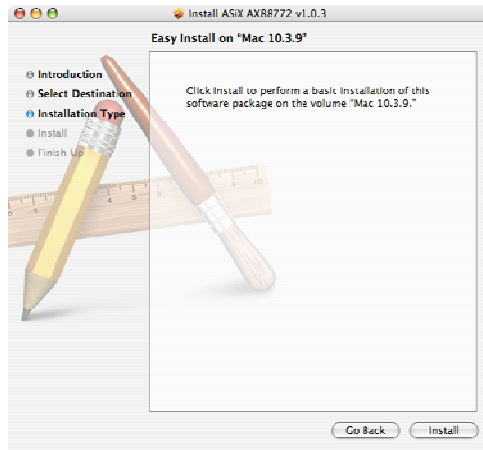
1. Vstavite priloženi CD LevelOne v pogon CD. Prebrskajte do **Mac_OSX10.3** (ali Mac_OSX10.4, glede na operacijski sistem). Prikazalo se bo okno za nameščanje. Kliknite "Continue" (Nadaljaj).



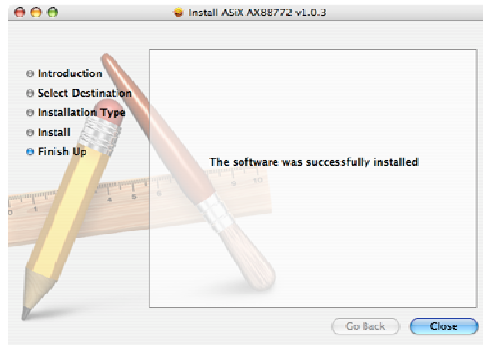
2. Izberite mesto za namestitev gonilnika. Kliknite "Continue" (Nadaljuj) za nadaljevanje.



3. Kliknite "Install" (Namesti) za začetek nameščanja.



4. Kliknite gumb “Close” (Zapri) nadaljevanje namestitve.



Namestitev Wi

Le povežite USB-0202 v prosta vrata USB postaje Wii (Igralna postaja) in privzeta nastavitve načina odjemalca je DHCP.

Windows Vista 安装

当出现“Found New Hardware”「找到新硬件」窗口时，共有两种方式可安装 Windows Vista 软件：

(1) 按下“Cancel”「取消」后，从 LevelOne 的光盘安装驱动程序

(2) 寻找并安装驱动程序软件

请参阅以下说明：

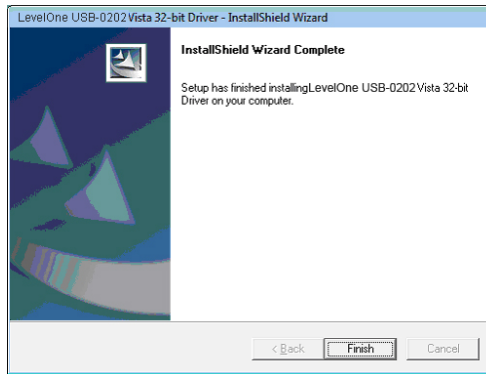
(1) 从 LevelOne 的光盘安装驱动程序

1. 当出现“Found New Hardware Wizard”「找到新硬件精灵」窗口时，请按一下“Cancel”「取消」，关闭此窗口。



2. 请将 LevelOne 的光盘放入光驱中，按一下 **我的计算机** → **光驱** → **驱动程序** → **Vista 32 位 安装**。点选安装图示后，即可开始执行驱动程序安装。

3. 安装完成后，请按一下“Finish”「完成」键。

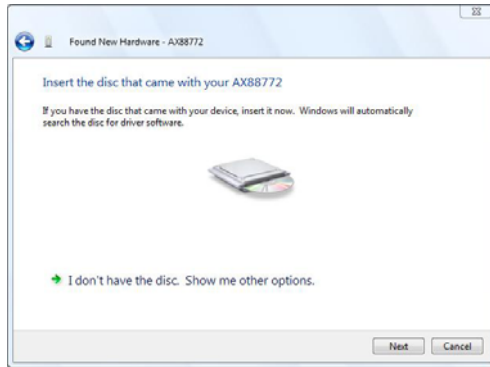


(2) 寻找并安装驱动程序软件:

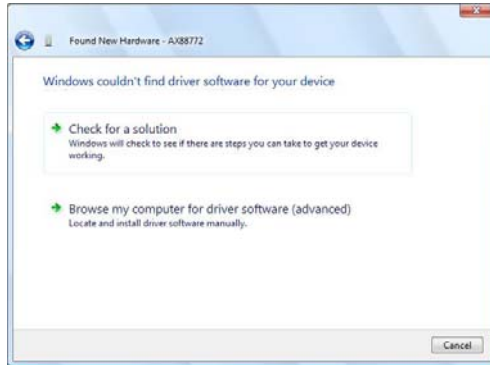
1. 当出现“Found New Hardware”「找到新硬件」窗口时，请选择“Locate and install driver software”「寻找并安装驱动程序软件」。



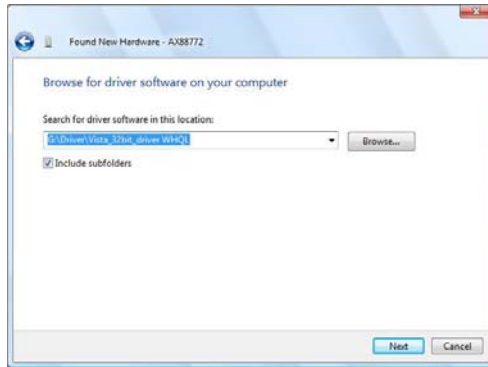
2. 选择“I don't have the disc. Show me other options”「我没有光盘片，请显示其它选项」，然后按“Next”「下一步」键继续进行。



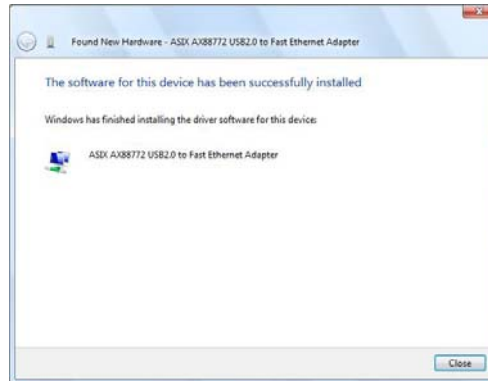
5. 选择 “Browse my computer for driver software” 「浏览计算机上的驱动程序软件」。



3. 放入随附的驱动程序光盘，按一下 “Browse” 「浏览」按钮，然后选择 计算机 → 光驱 → 驱动程序 → Vista_32bit_driver WHQL。
按 “Next” 「下一步」键继续。



4. 按一下 "Close" 「关闭」以完成安装。



Mac OS 安装

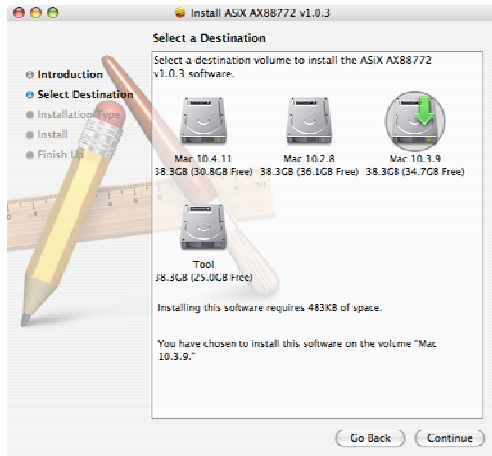
请无须在 Mac10.5 上安装驱动程序，因其具有随插即用的功能。

以下为 Mac 10.3 或 10.4 安装指南：

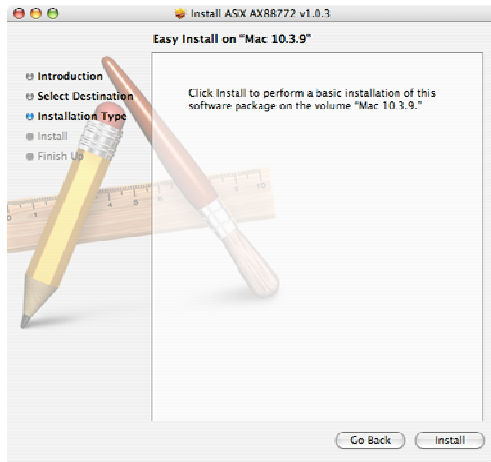
1. 将随附的光盘放入光驱中，浏览至 **Mac_OSX10.3**（或 **Mac_OSX10.4**，需视使用的系统而定），接着将出现安装窗口，请按一下 "Continue" 「继续」。



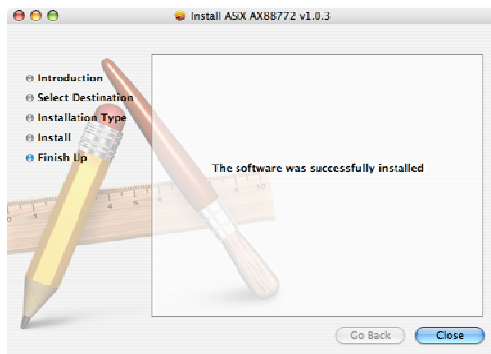
2. 选择您欲安装驱动程序的目的地，然后按“Continue”「继续」键，继续进行。



3. 按一下「安装」以开始安装。



4. 按一下「关闭」以完成安装。



Wii 安装

仅需将 USB-0202 与 Wii（游戏机）上空的 USB 埠相互连接即可，预设设定为 DHCP 客户端模式。

安裝

Windows Vista 安裝

當出現 "Found New Hardware" 「找到新硬體」視窗時，共有兩種方式可安裝 Windows Vista 軟體：

(1) 按下 "Cancel" 「取消」後，從 LevelOne 的光碟安裝驅動程式

(2) 尋找並安裝驅動程式軟體

請參閱以下說明：

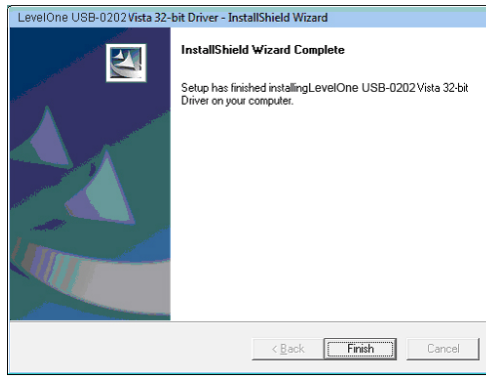
(1) 從 LevelOne 的光碟安裝驅動程式

4. 當出現 "Found New Hardware Wizard" 「找到新硬體精靈」視窗時，請按一下 "Cancel" 「取消」，關閉此視窗。



5. 請將 LevelOne 的光碟放入光碟機中，按一下 **我的電腦** → **光碟機** → **驅動程式** → **Vista 32 位元 安裝**。點選安裝圖示後，即可開始執行驅動程式安裝。

6. 安裝完成後，請按一下 "Finish" 「完成」鍵。

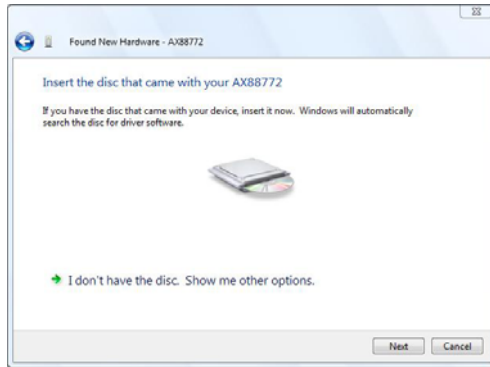


(2) 尋找並安裝驅動程式軟體：

1. 當出現“Found New Hardware”「找到新硬體」視窗時，請選擇“Locate and install driver software”「尋找並安裝驅動程式軟體」。



2. 選擇“ I don't have the disc. Show me other options”「我沒有光碟片，請顯示其他選項」，然後按“Next”「下一步」鍵繼續進行。

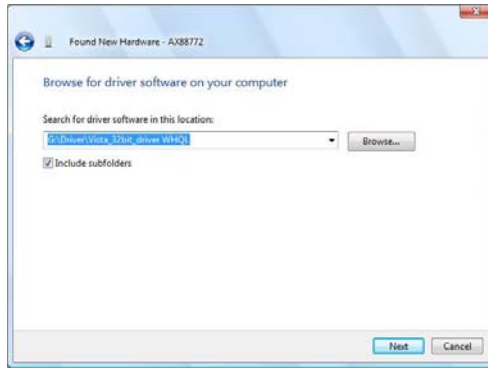


3. 選擇 “Browse my computer for driver software” 「瀏覽電腦上的驅動程式軟體」。

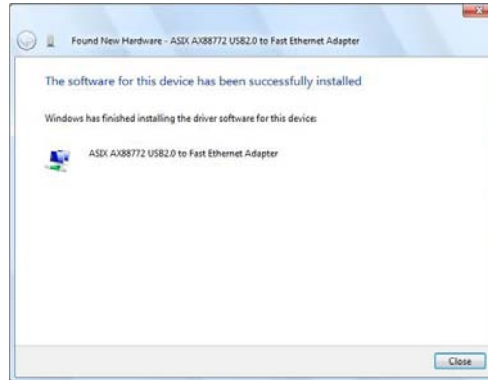


4. 放入隨附的驅動程式光碟，按一下 “Browse” 「瀏覽」 按鈕，然後選擇 電腦 → 光碟機 → 驅動程式 → Vista_32bit_driver WHQL。

按 “Next” 「下一步」 鍵繼續。



5. 按一下 "Close" 「關閉」以完成安裝。

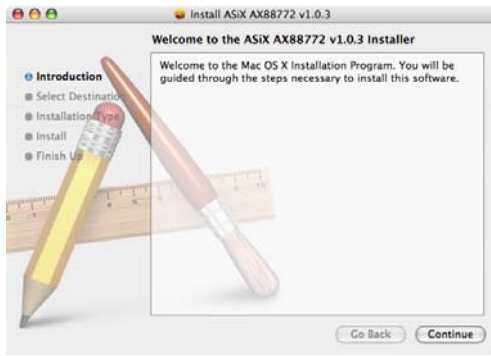


Mac OS 安裝

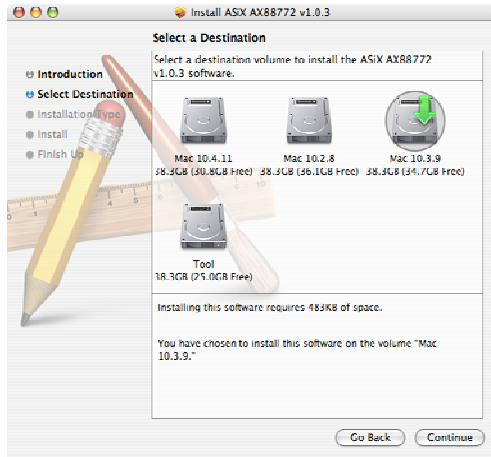
請無須在 Mac10.5 上安裝驅動程式，因其具有隨插即用的功能。

以下為 Mac 10.3 或 10.4 安裝指南：

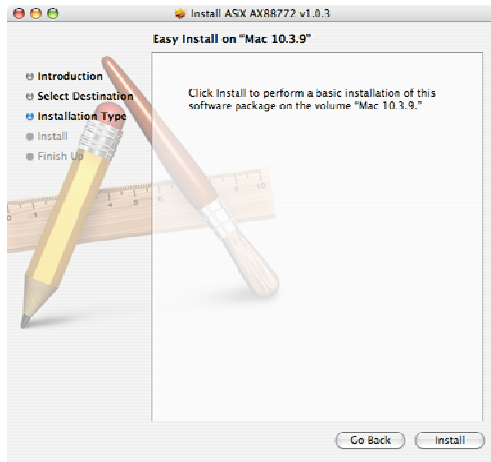
5. 將隨附的光碟放入光碟機中，瀏覽至 **Mac_OSX10.3**（或 **Mac_OSX10.4**，需視使用的系統而定），接著將出現安裝視窗，請按一下 "Continue" 「繼續」。



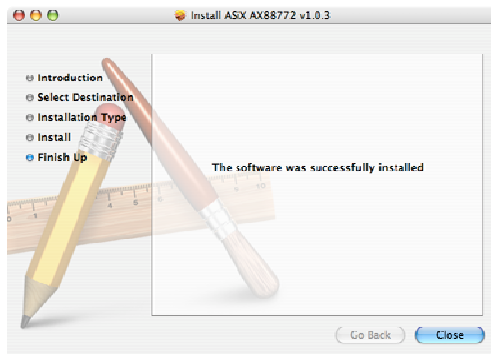
6. 選擇您欲安裝驅動程式的目的地，然後按“Continue”「繼續」鍵，繼續進行。



7. 按一下「安裝」以開始安裝。



8. 按一下「關閉」以完成安裝。



Wii 安裝

僅需將 USB-0202 與 Wii (遊戲機) 上空的 USB 埠相互連接即可，預設設定為 DHCP 用戶端模式。

설치

Windows Vista 용 설치

"Found New Hardware" (새 하드웨어 발견) 시 Windows Vista 용 소프트웨어를 설치하는 두 가지 방법이 있습니다.

- (1) " Cancel " (취소) 를 누른 다음 LevelOne 의 CD 에서 드라이버를 설치합니다.
- (2) 드라이버 소프트웨어를 검색 및 설치합니다.

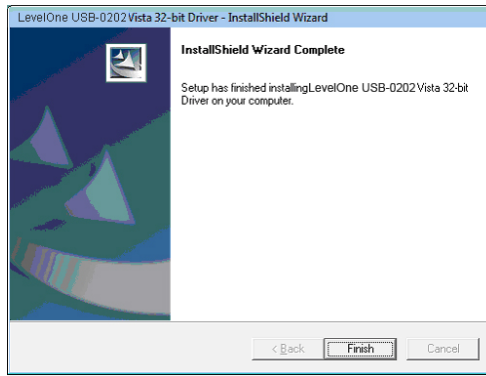
다음 지침을 참조하십시오:

(1) LevelOne CD 에서 드라이버를 설치합니다.

1. "Found New Hardware Wizard" (새 하드웨어 발견 마법사) 창이 표시됩니다. "Cancel" (취소) 를 클릭하여 창을 닫습니다.



2. LevelOne CD-ROM 을 CD-ROM 드라이브에 넣습니다. 컴퓨터 → **CD-ROM** 드라이브 → 드라이버 → **Vista 32 비트** 설치를 차례로 클릭합니다. 설치 아이콘을 누르면 드라이버 설치가 시작됩니다.
3. 설치를 완료한 다음 "Finish " (마침) 버튼을 클릭합니다.



(2) 드라이버 소프트웨어를 검색 및 설치합니다.

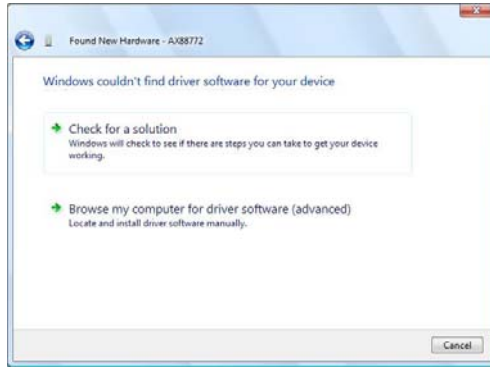
1. "Found New Hardware" (새 하드웨어 발견) 창이 표시됩니다. "Locate and install driver software" (드라이버 소프트웨어를 검색 및 설치)를 선택합니다.



2. "I don't have the disc. Show me other options" (디스크가 없습니다. 다른 옵션을 봅니다.)를 선택합니다. "Next" (다음)을 클릭하여 계속 진행합니다.

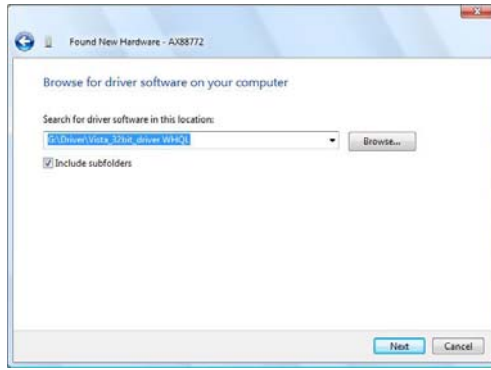


3. "Browse my computer for driver software" (컴퓨터에서 드라이버 소프트웨어 찾아보기) 를 선택합니다.



제공된 드라이버 CD 를 넣습니다. "Browse" (찾아보기) 버튼을 클릭한 다음 컴퓨터 → CD-ROM 드라이브 → 드라이버 → Vista_32bit_driver WHQL 을 차례로 선택합니다.

"Next " (다음) 을 클릭하여 계속 진행합니다.



4. " Close " (닫기) 를 클릭하여 설치를 완료합니다.



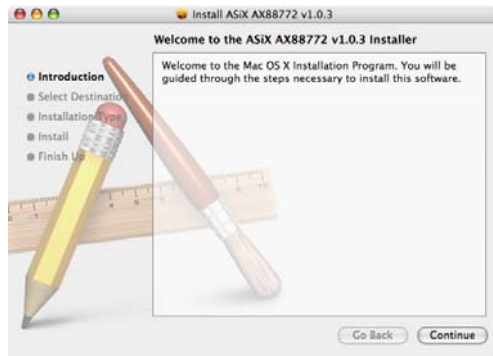
Mac OS 설치

플러그 앤 플레이가 지원되므로 Mac 10.5 에서는 드라이버를 설치할 필요가 없습니다.

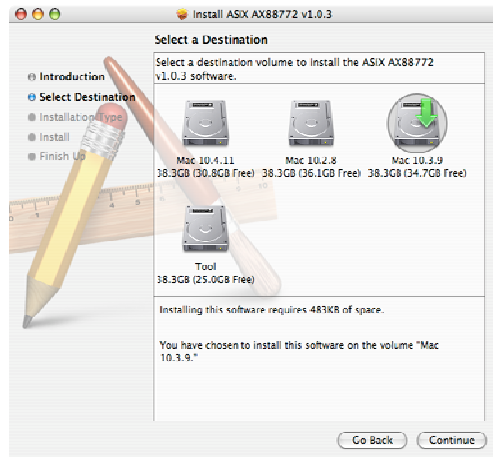
다음은 Mac 10.3 또는 10.4 설치 지침입니다.

1. 제공된 CD 를 CD-ROM 드라이브에 넣습니다.
Mac_OSX10.3(또는 시스템에 따라 **Mac_OSX10.4**)를 찾습니다. 설치창이 표시됩니다. "Continue " (계속)을

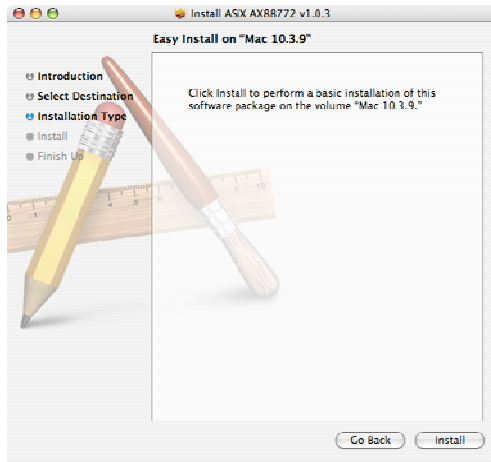
클릭합니다.



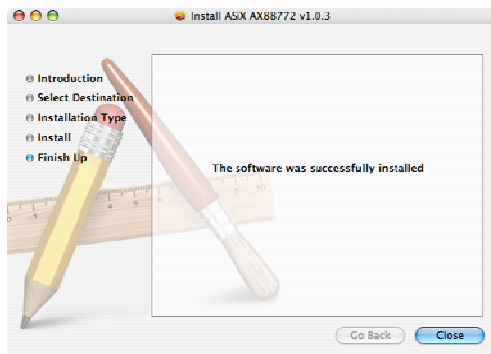
2. 드라이버를 설치할 위치를 선택합니다. "Continue" (계속) 을 클릭하여 계속 진행합니다.



3. "Install" (설치) 를 클릭하여 설치를 시작합니다.



4. "Close" (닫기) 버튼을 클릭하여 설치를 완료합니다.



Wii 설치

USB-0202 를 Wii(게임 스테이션)의 비어 있는 USB 포트에 연결합니다. 기본 설정은 DHCP 클라이언트 모드입니다.

Установка

Установка в Windows Vista

При появлении окна "Found New Hardware" (Найдено новое оборудование) ПО для ОС Windows Vista можно установить двумя способами.

(1) Нажмите кнопку "Cancel" (Отмена) и установите драйвер с компакт-диска LevelOne.

(2) Найдите и установите драйвер.

Выполните следующие действия:

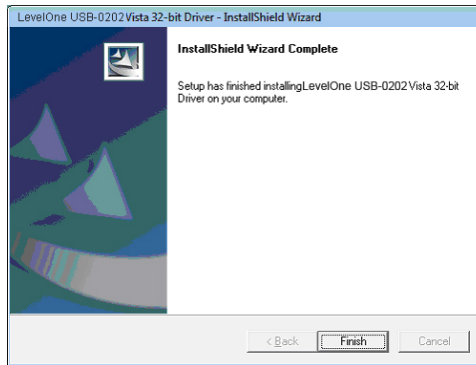
(1) Вставьте драйвер на компакт-диске LevelOne.

1. На экране откроется окно "Found New Hardware Wizard" (Мастер поиска нового оборудования). Нажмите "Cancel" (Отмена), чтобы закрыть окно.



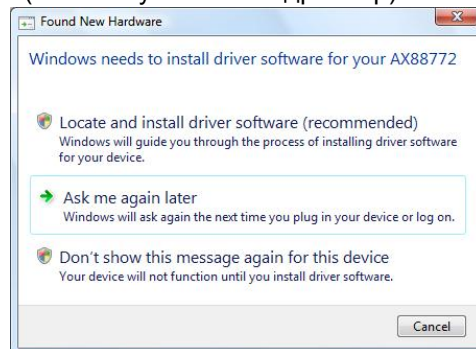
2. Вставьте компакт-диск LevelOne в привод. Щелкните "My Computer" (Мой компьютер) → привод компакт-дисков → "Driver" (Драйвер) → Установка Vista 32 bit Щелкните значок установки, чтобы начать установку драйвера.

3. Нажмите кнопку "Finish" (Готово) после завершения установки.

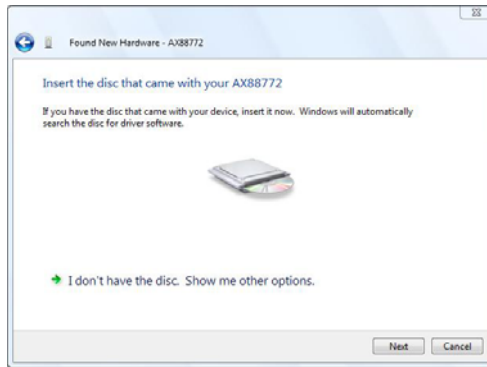


(2) Найдите и установите драйвер.

1. На экране откроется окно "Found New Hardware" (Найдено новое оборудование). Выберите "Locate and install driver software" (Найти и установить драйвер).



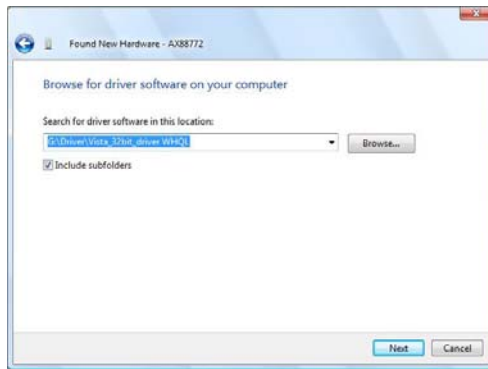
2. Выберите "I don't have the disc. Show me other options" (У меня нет диска. Покажите другие варианты). После этого нажмите кнопку "Next" (Далее) для продолжения.



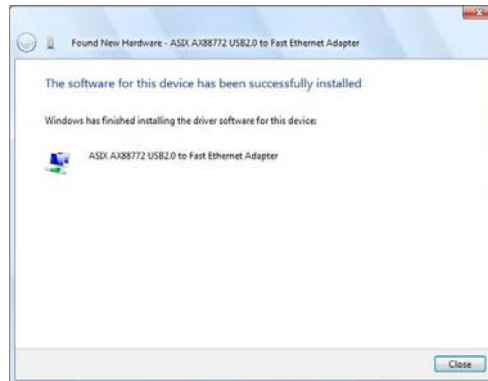
3. Выберите "Browse my computer for driver software" (Выполнить поиск драйвера на компьютере).



4. Вставьте прилагаемый компакт-диск с драйвером. Нажмите кнопку "Browse" (Обзор) и выберите My Computer (Мой компьютер) → привод компакт-дисков → "Driver" (Драйвер) → "Vista_32bit_driver WHQL"
Нажмите кнопку "Next" (Далее) для продолжения.



5. Нажмите кнопку "Close" (Закреть) для завершения установки.



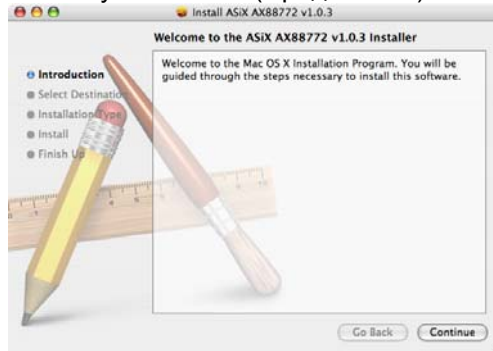
Установка в ОС Mac OS

На Mac10.5 необязательно устанавливать драйвер, т.к. поддерживается технология Plug and play.

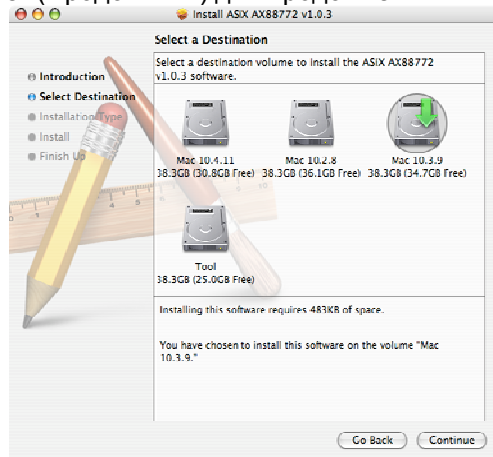
Далее приводятся указания по установке в ОС Mac 10.3 или 10.4.

1. Вставьте прилагаемый компакт-диск в привод. Выберите **Mac_OSX10.3** (или Mac_OSX10.4 в зависимости от системы). На экране появится диалоговое окно установки.

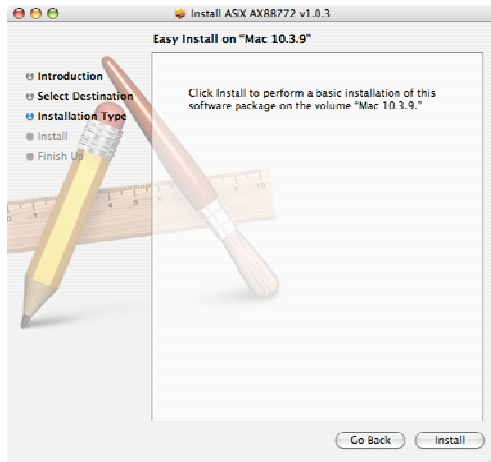
Нажмите кнопку "Continue" (Продолжить).



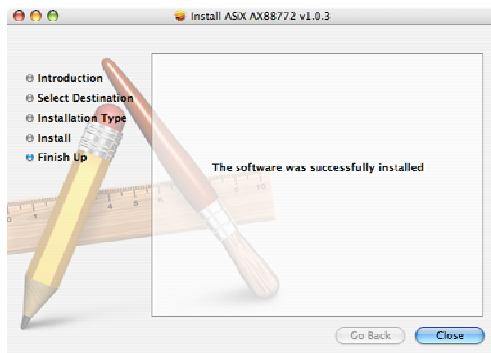
2. Выберите путь установки драйвера. Нажмите кнопку "Continue" (Продолжить) для продолжения.



3. Нажмите кнопку "Install" (Установить) для начала установки.



4. Нажмите кнопку "Close" (Закреть) для завершения установки.



Установка в Wii

Просто подключите USB-0202 к свободному USB-разъему на Wii (игровая приставка). По умолчанию установлен клиентский режим DHCP.