



WBR-3601

*11g Wireless ADSL2+ Modem Router*

---

---

# ***Quick Installation Guide***

---

---

English

## Package Contents

- WBR-3601
- Power Adapter (12V AC, 1A)
- RJ-11 ADSL / Telephone Cable
- RJ-45 LAN Ethernet Cable
- CD-ROM with Manual / Utility
- Quick Installation Guide

If any of the above items are missing, please contact your retailer or distributor.

Before you begin, please have your ISP's username and password details ready.

### Default Settings

<b>IP Address</b>	<b>192.168.0.1</b>
<b>User/Password</b>	<b>admin / password</b>
<b>Wireless Mode</b>	<b>Enable</b>
<b>Wireless SSID</b>	<b>WBR-3601</b>
<b>Security</b>	<b>None</b>

## Installation

1. Connect the ADSL activated Telephone line



2. Connect the Computer LAN cable to an available LAN port.



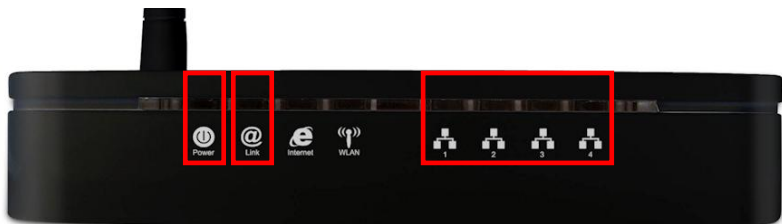
3. Plug in the Power Adapter



4. Press the Power ON switch on the rear of the router.



5. Wait until the PWR and ADSL Link lights remain lit green (not blinking) and the relevant LAN is lit.



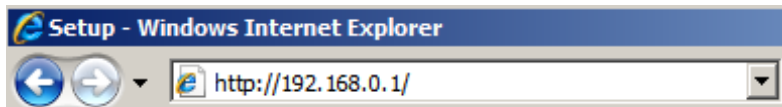
**Note:** If the ADSL Link light continues to blink, it means that that router cannot find an active ADSL connection. Please contact your Internet Service Provider for support.

6. Installation is now complete. You can now begin to set up the device.

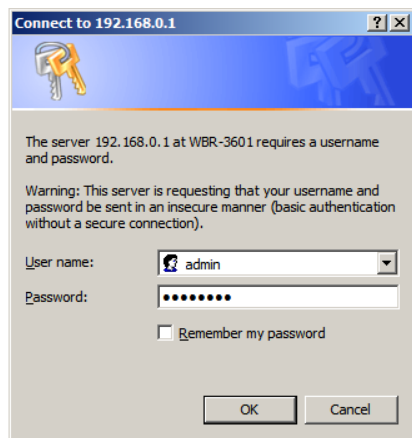
## Setup

1. Start your WEB browser. In the *Address* box, enter the following:

**http://192.168.0.1**



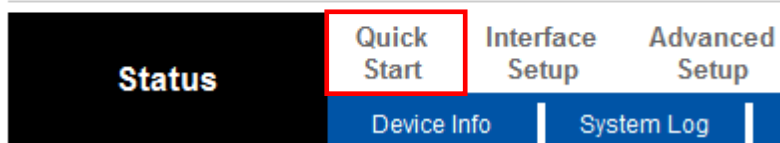
2. When prompted, use the following username and password.



User Name: **admin**

Password: **password**

- The first time you connect to the WBR-3601, you should run the Quick Start Wizard to configure the ADSL and Internet Connection. Click **Quick Start** on the menu.



- Please create a new password for the router.  
Leaving it as default could be a security risk.

#### Quick Start - Password

You may change the **admin** account password by entering in a new password. Click **NEXT** to continue.

New Password :	<input type="text"/>
Confirmed Password :	<input type="text"/>

- Select your Time Zone.

#### Quick Start - Time Zone

Select the appropriate time zone for your location and click **NEXT** to continue.

(GMT+08:00) Beijing, Hong Kong, Perth, Singapore, Taipei	▼
--	---

6. There are many ways to connect to your Internet Service Provider. Please refer to the table below to ensure your choices are correct.

In all cases, you will be required to enter the **VPI** and **VCI** settings. This must be provided to you by your Internet Service Provider.

<b>Connection Type</b>	<b>Data required.</b>
Dynamic IP Address	Usually, none.
Static (Fixed) IP Address	IP Address allocated to you, and related information, such as Network Mask, Gateway IP address, and DNS address.
PPPoE, PPPoA	a) User name and password are always required. b) If using a Static (Fixed) IP address, you need the IP address and related information (Network Mask, Gateway IP address, and DNS address)
Bridge Mode	The authentication process is not done by the WBR-3601, but by another device or PC. Note that the router and firewall functions do not apply under this mode.



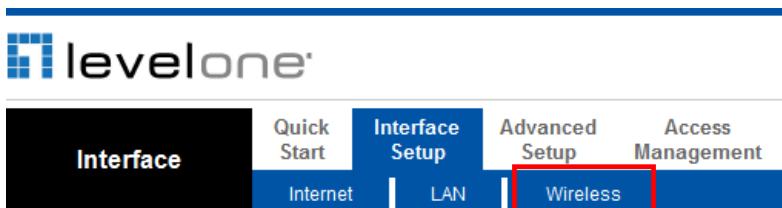
7. When the Quick Start Wizard is complete, click “**Next**” to save the settings and restart the router. You will be required to enter your *new* password.

Click “**Close**” to exit the Quick Start Wizard.

8. If successful, the Internet light should now be on.  
Now you can access the Internet.



9. Finally, to set up your wireless settings, please click “**Interface Setup**” and then “**Wireless**”.



10. Here you can select your Wireless ID (SSID) and the security encryption.

**Note:** LevelOne recommends WPA2-PSK (AES) for maximum security.

SSID Index :

Broadcast SSID :  Yes  No

SSID :

Authentication Type :

---

Encryption :

Pre-Shared Key :  (8-63 ASCII characters or 64 hexadecimal characters)

11. Congratulations! Setup of WBR-3601 is now complete.