



LevelOne

WBR-3800

MobilSpot™ Portable Wireless Hotspot

Quick Installation Guide

English

Português

Deutsch

Svenska

Français

Slovenščina

Español

繁體中文

Dutch

한국어

Dansk

Русский

Italiano

عربي

Ελληνικά

English	1
Deutsch	9
Français	17
Español	25
Dutch.....	33
Dansk.....	41
Italiano	49
Ελληνικά.....	57
Português.....	65
Svenska	73
Slovenščina.....	81
繁體中文.....	89
한국어	97
Русский.....	105
العربية	113

Default Settings

IP Address	192.168.0.1
User/Password	password
Wireless Mode	Enable
SSID	WBR-3800
Security	None

This guide covers only the most common situations. All detail information is described in the user manual.

English

To start installation, connect the WBR-3800 MobilSpot™ to your LAN network.

Note: DO NOT connect the MobilSpot™ to power before performing the installation steps below.

Step 1:

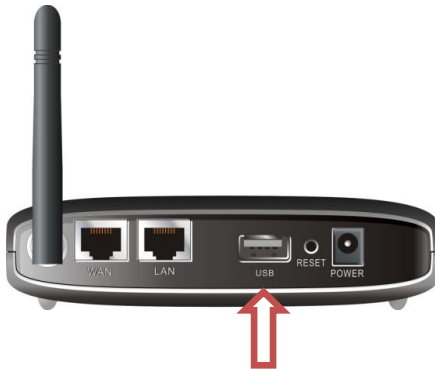
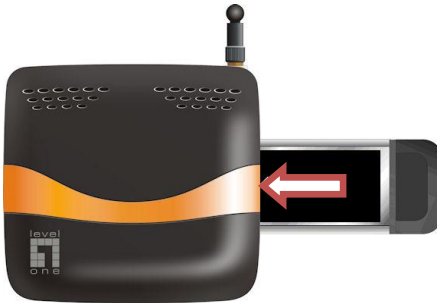
Attach the antenna by screwing it in a clockwise direction.

Once secured, position the antenna in an upwards position to ensure optimal reception.



Step 2:

Insert your 3G PC Card (either 16bit or 32bit) or plug a 3G USB Modem to the MobilSpot™.



Note: The WBR-3800 MobilSpot™ is designed to work with either UMTS or EVDO and even HSDPA 3G modems. Please refer to your service provider for detailed feature information.

If you also have an ADSL or Cable Modem, connect the modem to the WAN port.

Step 3:

Insert the Ethernet cable into the LAN Port on the back panel, and an available Ethernet port on the computer you wish to use to configure the unit.



Note: After configuration is complete, you may wish to connect the LAN port to a Switch to share the Internet connection over wired network.

We recommend Level One's FSW-0511 - 10/100Mbps 5 Port Switch.

Step 4:

Connect the Power Adapter

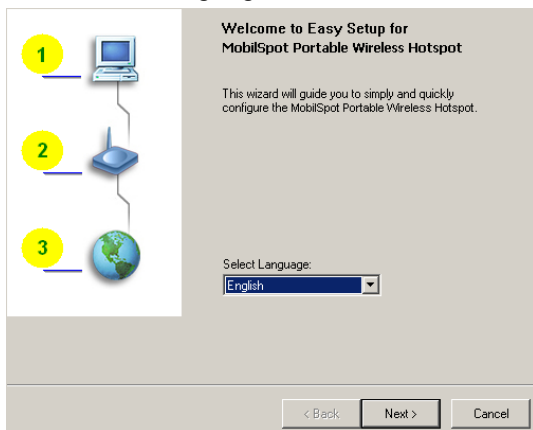


- a. The Power LED will turn ON to indicate power has been applied.
- b. Other LEDs will flash ON and OFF as the MobilSpot™ performs initialization and connection process.
- c. When complete, the following LEDs will illuminate green: 3G, WAN, LAN and WLAN.

Step 5: Using the Easy Setup Utility

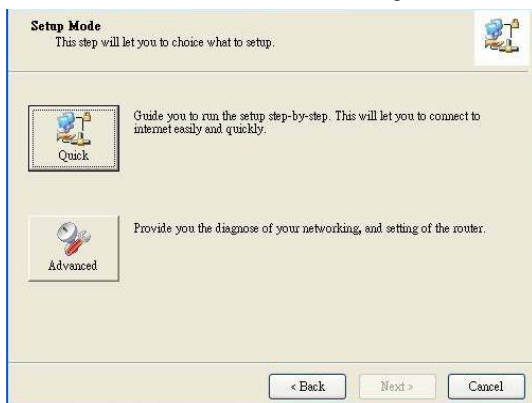
1. Install the Easy Setup Utility from CD. After installation is complete, you can execute it from the Start Menu.
2. Configure the settings by the following steps.

Select the Language, then click “Next.”

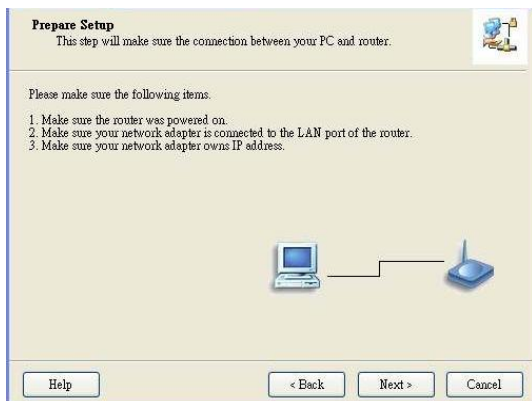


3. You can select Quick Mode to run the Step-by-Step Wizard, or use Advanced Mode to access the Web Based Configuration of the router.

Note: Please see User Manual for usage instructions



4. Check the items are completed before proceeding.



5. Enter your Wireless settings

Wireless Setting
This step will setup your basic wireless network information.

Please assign the parameters for your wireless network. If you need more settings, please login to the router's web page to setup. You can open the default web browser at <http://192.168.123.254> to configure advanced settings of the router.

Wireless:

SSID:

Channel:

Security:

Do not set at this time.

6. Auto Detect your WAN Service.

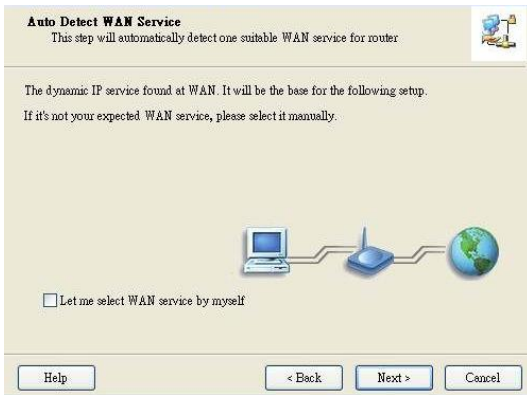
Auto Detect WAN Service
This step will automatically detect one suitable WAN service for router

Please make sure the WAN cable connection is well between your router and broadband modem.
You can ignore the WAN cable connection, but the WAN service will not be checked later.
You can specify it by yourself if you know your WAN service type.

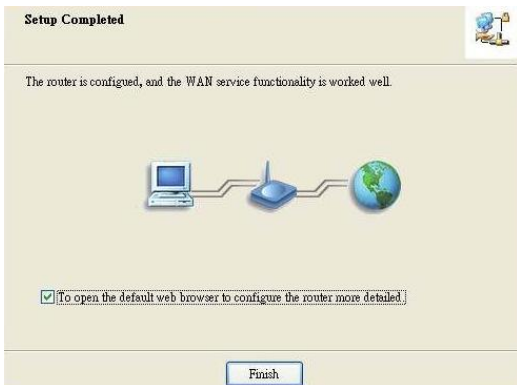


Let me select WAN service by myself

7. In this case, DHCP WAN Type is detected.



8. Easy Setup is complete.



9. Click "Finish" to complete the installation.

Deutsch

Als erster muss der 3G UMTS MobilSpot™ Router mit Ihrem Netzwerk verbunden werden.

Anm.: Den WBR-3800 3G UMTS MobilSpot™ Router erst mit dem Strom verbinden, wenn folgende Schritte ausgeführt wurden.

Schritt 1:

Schrauben Sie die Antenne im Uhrzeigersinn an den Router an.

Einmal festgeschraubt, positionieren Sie die Antenne so, dass sie nach oben zeigt.



Schritt 2:

Setzen Sie Ihre 3G UMTS Karte Card (16 Bit oder 32 Bit) ein oder verbinden Sie ein USB 3G UMTS Modem mit dem Router.



Anm.: Der 3G UMTS MobilSpot™ Router kann mit UMTS oder EVDO und auch HSDPA 3G Modems zusammenarbeiten. Bitte fragen Sie Ihren Netzbetreiber für genauere Informationen.

Wenn Sie auch ein ADSL- oder Kabelmodem besitzen, verbinden Sie dieses mit dem WAN Port des Routers.

Schritt 3:

Stecken Sie das Ethernet Kabel in den LAN Port auf der Rückseite des Routers und dem Netzwerkanschluss des Computers, den Sie zum Konfigurieren benutzen möchten.



Anm.: Nach der Konfiguration können Sie den LAN Port mit einem Switch verbinden, um die Internetverbindung an allen PCs Ihres Kabelgebundenen LANs nutzen zu können.

Wir empfehlen den Level One FSW-0511 - 10/100Mbps 5 Port Switch.

Schritt 4:

Verbinden Sie den Stromanschluss

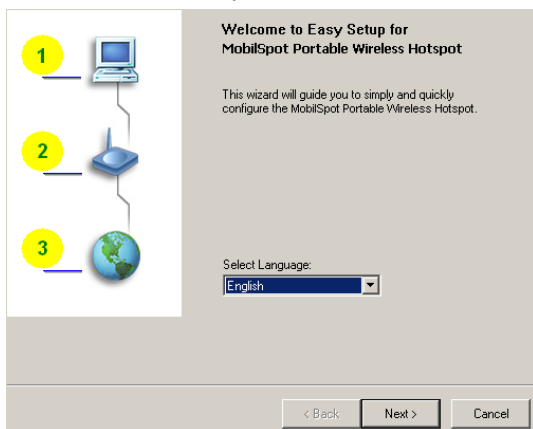


- a. Die Power LED wird aufleuchten, um anzuzeigen, dass das Gerät mit Strom versorgt wird.
- b. Die anderen LEDs werden blinken während der Router startet.
- c. Nach dem Start sollten folgende LEDs leuchten: 3G, WAN, LAN und WLAN.

Schritt 5: Nutzung des Easy Setup Utilitys

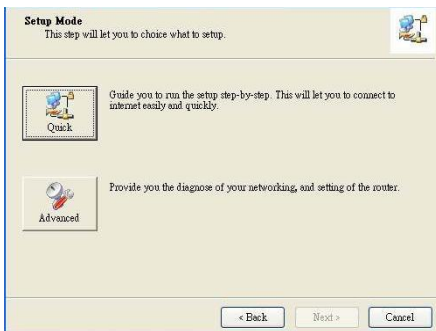
1. Installieren Sie das Easy Setup Utility von CD. Nach der Installation können Sie es vom Start Menu aus starten.
2. Konfigurieren Sie die Einstellungen durch folgende Schritte.

Wählen Sie die Sprache und klicken Sie "Weiter"

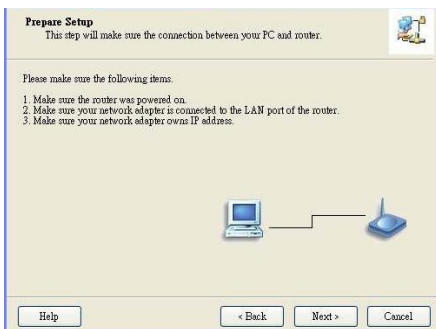


3. Sie können nun den Quick Modus für die Schritt-für-Schritt Installation wählen oder den Erweiterten Modus, um zum Webinterface des Router zu gelangen.

Anm.: Details hierzu finden Sie im im Benutzerhandbuch auf der CD



4. Prüfen Sie, ob die angezeigten Punkte erledigt sind, bevor Sie fortfahren.



5. Geben Sie Ihre Wireless Einstellungen ein

Wireless Setting

This step will setup your basic wireless network information.

Please assign the parameters for your wireless network. If you need more settings, please login to the router's web page to setup. You can open the default web browser at <http://192.168.123.254> to configure advanced settings of the router.

Wireless:

SSID:

Channel:

Security:


Do not set at this time.

6. Automatische Erkennung des WAN Dienstes

Auto Detect WAN Service

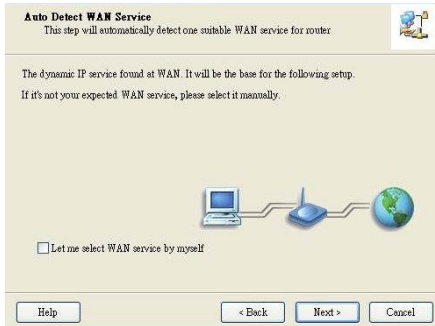
This step will automatically detect one suitable WAN service for router

Please make sure the WAN cable connection is well between your router and broadband modem.
You can ignore the WAN cable connection, but the WAN service will not be checked later.
You can specify it by yourself if you know your WAN service type.

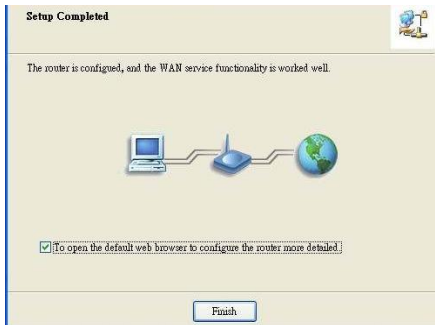


Let me select WAN service by myself

7. In diesem Fall wurde DHCP als WAN Typ erkannt.



8. Easy Setup ist vollständig.



9. Klicken Sie "Beenden" um die Installation abzuschließen.

Français

Pour démarrer l'installation, branchez le routeur sans fil 3G sur votre réseau LAN.

Remarque: NE branchez PAS le routeur sans fil 3G WBR-3800 sur l'alimentation avant d'avoir réalisé les étapes d'installation ci-dessous.

Étape 1:

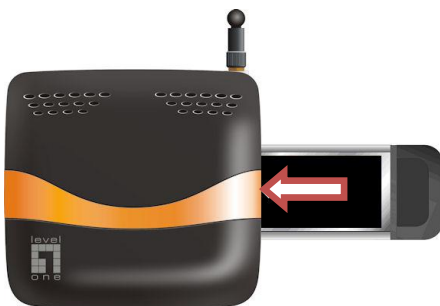
Fixez l'antenne en la vissant dans le sens des aiguilles d'une montre.

Une fois fixée, placez l'antenne vers le haut afin d'assurer une réception optimale.



Étape 2:

Insérez votre carte 3G (16 bits ou 32 bits) ou reliez un modem 3G USB au routeur.



Remarque: Le routeur sans fil 3G est conçu pour fonctionner avec des modems 3G UMTS ou EVDO et même HSDPA. Veuillez vous référer à votre fournisseur d'accès pour des informations détaillées sur la fonction.

Si vous avez également un modem ADSL ou câble, connectez le modem au port WAN.

Étape 3:

Insérez le câble Ethernet entre le port LAN du panneau arrière, et un port Ethernet disponible de l'ordinateur que vous voulez utiliser pour configurer l'appareil.



Remarque : Une fois la configuration terminée, vous pouvez souhaiter brancher le port LAN à un switch pour partager la connexion à Internet sur le réseau filaire.

Nous recommandons le switch 5 ports 10/100Mbit/s FSW-0511 de Level One.

Étape 4:

Branchez l'adaptateur secteur

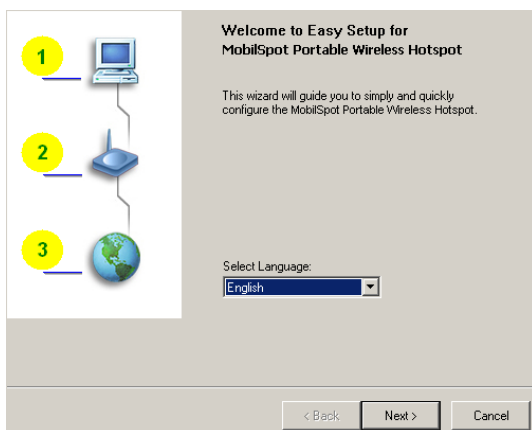


- a. Le LED d'alimentation s'allume pour indiquer que l'alimentation est appliquée.
- b. Les autres LED clignotent sur MARCHÉ et ARRÊT tandis que le routeur effectue les processus d'initialisation et de connexion.
- c. Une fois terminés, les LED suivantes s'illuminent en vert : 3G, WAN, LAN et WLAN.

Étape 5: Utiliser l'Utilitaire de configuration facile

1. Installez l'Utilitaire de configuration facile à partir du CD. Une fois l'installation terminée, vous pouvez l'exécuter depuis le menu Démarrer.
2. Configurez les réglages en effectuant les étapes suivantes.

Choisissez la langue, puis cliquez sur "Suivant."

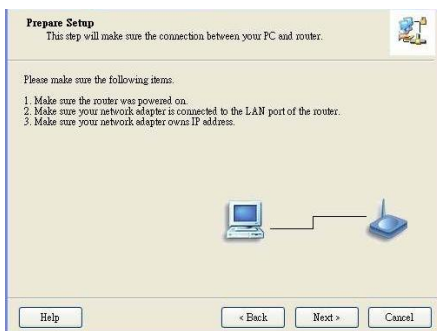


3. Vous pouvez choisir le Mode rapide pour exécuter l'Assistant pas à pas, ou utiliser le mode avancé pour accéder à la configuration basée sur le Web du routeur.

Remarque : Veuillez consulter le manuel d'utilisation pour les instructions d'utilisation



4. Vérifiez que les éléments sont terminés avant de poursuivre.



5. Saisissez vos paramètres sans fil

Wireless Setting

This step will setup your basic wireless network information.

Please assign the parameters for your wireless network. If you need more settings, please login to the router's web page to setup. You can open the default web browser at <http://192.168.1.23.254> to configure advanced settings of the router.

Wireless:

SSID:

Channel:

Security:

Do not set at this time.

6. Détecter automatiquement le service WAN

Auto Detect WAN Service

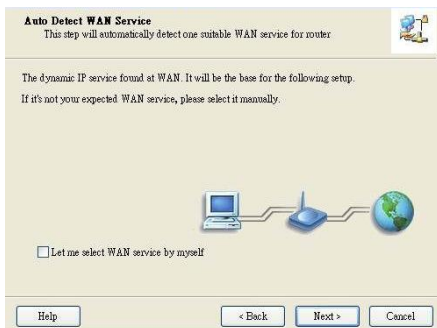
This step will automatically detect one suitable WAN service for router

Please make sure the WAN cable connection is well between your router and broadband modem.
You can ignore the WAN cable connection, but the WAN service will not be checked later.
You can specify it by yourself if you know your WAN service type.

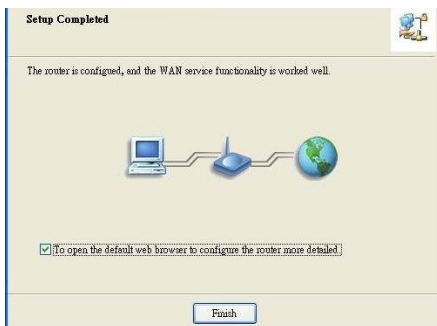


Let me select WAN service by myself

7. Dans ce cas, le type WAN DHCP est détecté



8. La Configuration facile est terminée.



9. Cliquez sur "Terminer" pour terminer l'installation.

Español

Para iniciar la instalación, conecte el router inalámbrico 3G a su red LAN.

Nota: NO conectar el WBR-3800 Wireless Router 3G a alimentación antes de llevar a cabo la instalación. Seguir los pasos descritos a continuación.

Paso 1

Conecte la antena de atornillar en sentido horario.

Una vez seguro, colocar la antena en una posición hacia arriba para asegurar una buena recepción.



Paso 2

Inserte su 3G PC Card (de 16bit o 32bit) o enchufe un módem USB 3G al router.



Nota: El router inalámbrico 3G está diseñado para trabajar con cualquier EVDO o UMTS y incluso módems HSDPA 3G. Por favor, consulte con su proveedor de servicios para conocer con detalle las características de su servicio.

Si usted también tiene ADSL o módem por cable, conectar el módem al puerto WAN.

Paso 3

Inserte el cable Ethernet LAN en el puerto del panel trasero, y en un puerto Ethernet disponible en el ordenador que desea utilizar para configurar la unidad.



Nota: Después de la configuración esté completa, puede conectar el puerto LAN a un Switch para compartir la conexión a Internet de red cableada.

Recomendamos LevelOne FSW-0511 - 10/100Mbps 5 Port Switch

Paso 4

Conectar el adaptador de alimentación

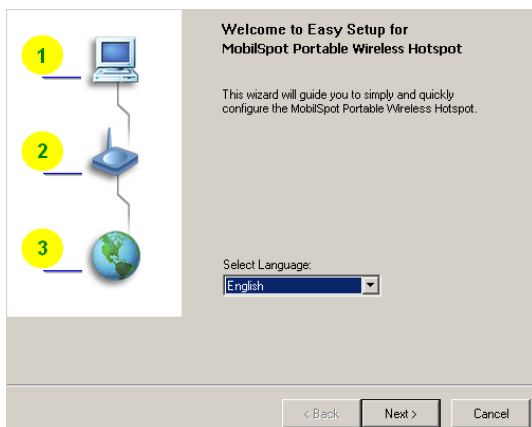


- a. El LED de alimentación se enciende para indicar que se ha aplicado la ligación de corriente eléctrica.
- b. Otros indicadores LED parpadearán "ON" y "OFF" durante el proceso de inicialización y de conexión.
- c. Al terminar, los siguientes indicadores LED se iluminan de verde: 3G, WAN, LAN y WLAN.

Paso 5: El uso de “Easy Setup”

1. Instale el “Easy Setup” (configuración fácil) de CD. Después de la instalación se haya completado, puede ejecutar desde el “Start Menu”.
2. Configurar los ajustes acompañando los siguientes pasos.

Seleccionar el idioma, pulse en "Next".

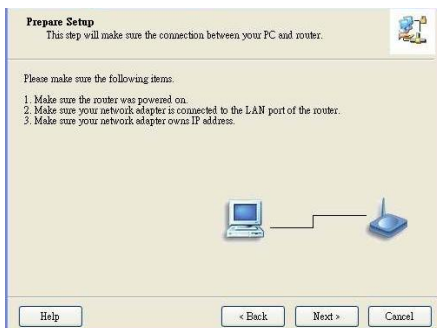


3. Puede seleccionar Quick Mode para ejecutar la aplicación “ Step-by-Step Wizard”, o utilizar “Advanced Mode” para acceder a la configuración Web del router.

Nota: Por favor, véase el Manual del Usuario para las instrucciones de uso



4. Compruebe si los artículos se completan antes de proceder.



5. Introduzca su configuración inalámbrica

Wireless Setting

This step will setup your basic wireless network information.

Please assign the parameters for your wireless network. If you need more settings, please login to the router's web page to setup. You can open the default web browser at <http://192.168.1.23.254> to configure advanced settings of the router.

Wireless:

SSID:

Channel:

Security:

Do not set at this time.

6. Detección automática de servicio WAN


Auto Detect WAN Service

This step will automatically detect one suitable WAN service for router.

Please make sure the WAN cable connection is well between your router and broadband modem.

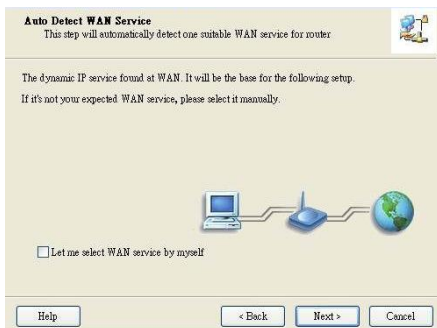
You can ignore the WAN cable connection, but the WAN service will not be checked later.

You can specify it by yourself if you know your WAN service type.

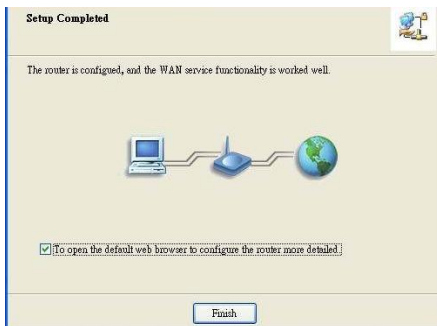


Let me select WAN service by myself

7. En este caso, WAN DHCP se ha detectado



8. Easy Setup (Configuración Fácil) se ha completado.



9. Pulse en "Finish" para completar la instalación.

Dutch

Sluit uw 3G Draadloze Router aan op uw netwerk alvorens de installatie te beginnen..

Opmerking: Sluit de WBR-3800 3G Wireless Router nog niet aan op de voedingspanning, voer eerst de onderstaande stappen uit.

Stap 1:

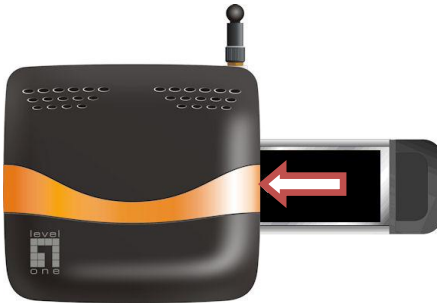
Monteer de meegeleverde antenne aan de router, draai met de klok mee.

Wanneer de antenne gemonteerd is, draait u de antenne in de positie zoals afgebeeld, dit voor een optimaal bereik.



Stap 2:

Plaats uw 3G PC Card (16bit of 32bit) of sluit een USB 3G Modem aan op uw router.



Opmerking: De 3G Wireless Router is ontworpen om met UMTS of EVDO en zelfs met HSDPA 3G modems samen te werken. Neem contact op met uw service provider voor verdere informatie.

Wanneer u ook over een ADSL of Kabel modem beschikt, kunt u deze aansluiten op de WAN poort.

Stap 3:

Sluit een netwerkkabel aan op de LAN poort van de router. De andere kant van deze netwerkkabel sluit u aan op een vrije LAN poort van uw computer waarmee u de router wilt configureren.



Opmerking: Nadat de configuratie is afgerond, kunt u eventueel wanneer het wenselijk is de LAN poort aansluiten op een switch in uw netwerk om de internet verbinding bedraad te delen.

Wij adviseren hiervoor LevelOne's FSW-0511 - 10/100Mbps 5 Port Switch.

Stap 4:

Het aansluiten van de voedings adapter

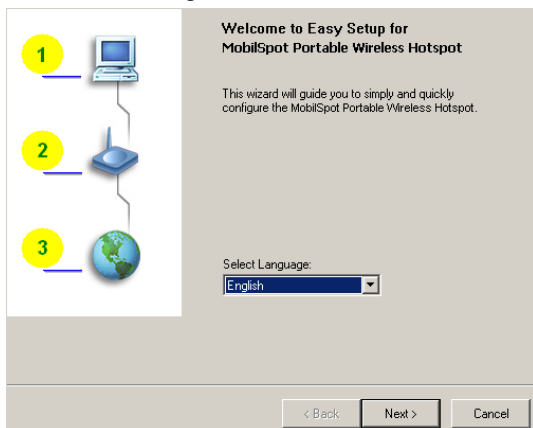


- a. De Power LED zal gaan branden wanneer de voedings adapter wordt aangesloten.
- b. De overige LEDs zullen oplichten ON en OFF wanneer de router zijn initialisatie en verbindingsproces uit voert.
- c. Wanneer dit afgerond is zullen de volgende LEDs oplichten: 3G, WAN, LAN and WLAN.

Stap 5: Gebruik van de Eenvoudige Setup Utility

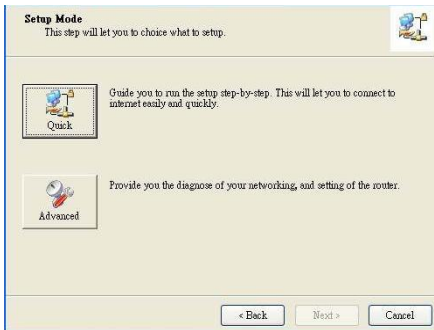
1. Installeer de “Easy Setup Utility” die op de CD staat. Wanneer de installatie is afgerond, kunt u via het menu Start de utility starten.
2. Volg de volgende stappen om de instellingen te configureren.

Selecteer de gewenste taal, dan klik “Next.”

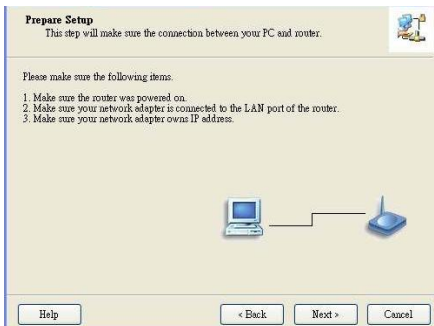


3. U kunt Quick Mode selecteren om de Stap bij Stap Wizard te gebruiken, of gebruik de Advanced Mode om de Web Based Configuratie van de router te gebruiken.

Opmerking: A.U.B. raadpleeg de User Manual voor uitgebreidere uitleg.



4. Controleer of de items zijn afgerond voordat u verder gaat.



5. Geef uw Wireless instellingen in

Wireless Setting
This step will setup your basic wireless network information.

Please assign the parameters for your wireless network. If you need more settings, please login to the router's web page to setup. You can open the default web browser at <http://192.168.1.23.254> to configure advanced settings of the router.


Wireless:
SSID:
Channel:
Security:

Do not set at this time.

6. Automatisch herkennen van de WAN Service

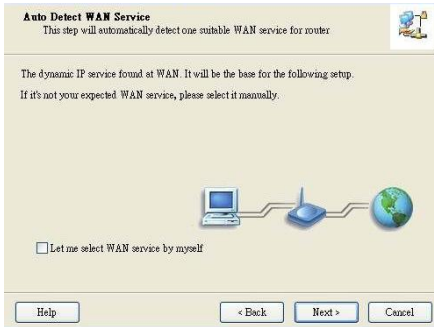
Auto Detect WAN Service
This step will automatically detect one suitable WAN service for router

Please make sure the WAN cable connection is well between your router and broadband modem.
You can ignore the WAN cable connection, but the WAN service will not be checked later.
You can specify it by yourself if you know your WAN service type.

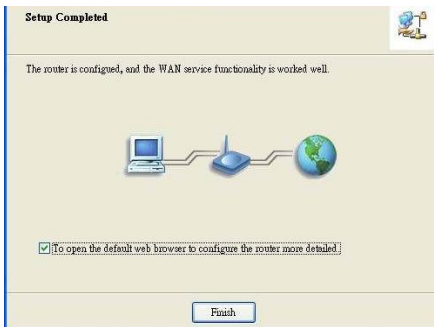


Let me select WAN service by myself

7. In dit geval, DHCP WAN Type is herkend



8. Easy Setup is afgerond.



9. Klik " Finish" om de installatie te voltooien.

Dansk

For at starte installationen, forbind din 3G trådløse router til dit kablede LAN netværk.

Note: TILSLUT IKKE WBR-3800 3G trådløse router til strøm før end du har udført de nedenstående trin.

Step 1:

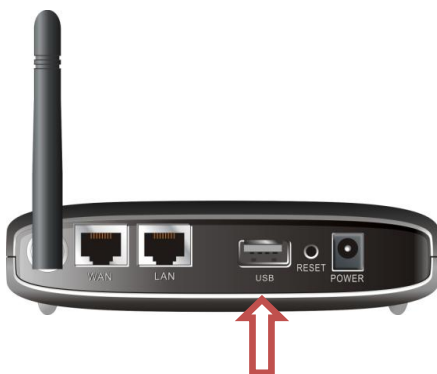
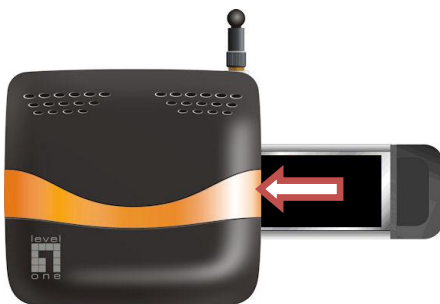
Skru antennen på, retning med uret.

Når den er monteret, ret antennen op i en oprejst position for optimal modtagelses effect..



Step 2:

Indsæt dit Type II 3G kort (enten 16bit eller 32bit) eller tilslut et USB 3G Modem til routeren.



Note: 3G trådløs router er designet til at arbejde med enten UMTS eller EVDO og selv HSDPA 3G modemer. Venligst referer til din service udbyder for detaljerede opsætnings information.

Hvis du har et ADSL eller kabel modem, tilslut modemmet til WAN port.

Step 3:

Indsæt ethernet kabel i LAN Port på bag panelet, og på en ledig ethernet port på computeren som du ønsker at bruge til konfiguration af enheden.



Note: Efter konfigurationen er komplet, Ønsker du måske at forbinde LAN porten til en switch for at dele internet forbindelsen over et kablet netværk.

Dertil anbefaler vi Level One's FSW-0511 - 10/100Mbps 5 Port Switch.

Step 4:

Tilslut strøm adapter

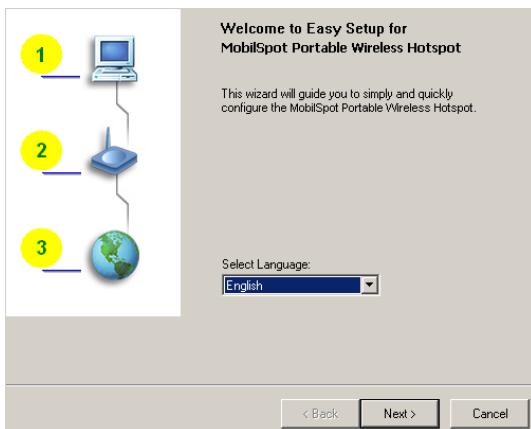


- a. Power LED vil tænde og indikere at der er strøm på enheden
- b. Andre LEDs vil blinke ON og OFF som routeren udfører opstarts og forbindelses processer.
- c. Når alt er klart, vil følgende LEDs lyse grønt: 3G, WAN, LAN og WLAN.

Step 5: Sådan bruges Easy Setup Utility

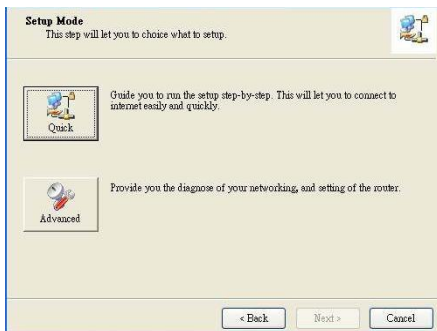
1. Installer Easy Setup Utility fra CD. Efter at installationen er komplet, kan du udføre den fra start menu igen hvis nødvendigt.
2. Konfigurer opsætningerne ved at følge disse trin.

Vælg sprog, klik "næste".

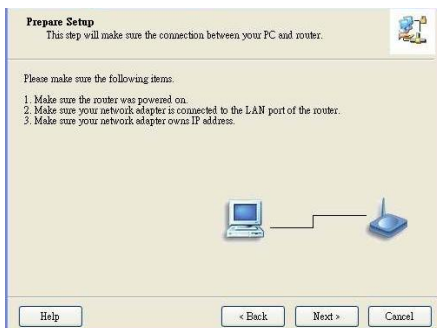


3. Du kan vælge Quick Mode for at køre en Step-by-Step Wizard, eller bruge Advanced Mode for at tilgå den web baserede konfiguration på routeren.

Note: Venligst se bruger manual for instruktioner



4. Tjek at alt er klart før du går videre.



5. Indtast dine trådløse opsætninger

Wireless Setting
This step will setup your basic wireless network information.

Please assign the parameters for your wireless network. If you need more settings, please login to the router's web page to setup. You can open the default web browser at <http://192.168.1.23.254> to configure advanced settings of the router.

Wireless:

SSID:

Channel:


Security:

Do not set at this time.

6. Auto detekt WAN service

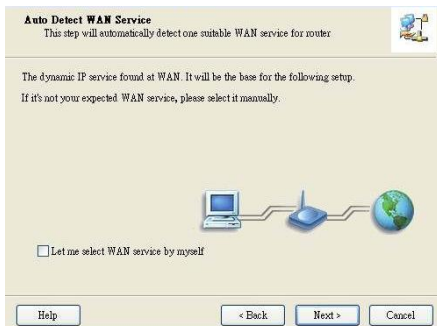
Auto Detect WAN Service
This step will automatically detect one suitable WAN service for router.

Please make sure the WAN cable connection is well between your router and broadband modem.
You can ignore the WAN cable connection, but the WAN service will not be checked later.
You can specify it by yourself if you know your WAN service type.

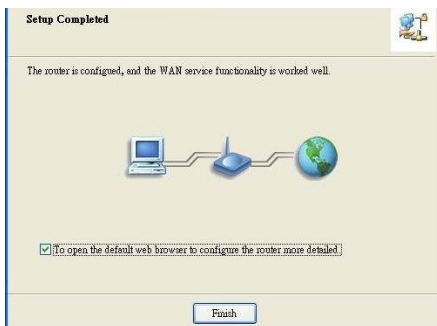


Let me select WAN service by myself

7. I tilfælde af at, DHCP WAN Type findes



8. Easy Setup er komplet.



9. Klik "Finish" for at afslutte installation.

Italiano

Per avviare l'installazione, collegare il Router Wireless 3G alla propria LAN.

Nota: NON Collegare il WBR-3800 alla corrente elettrica prima di aver eseguito le procedure indicate in seguito.

Step 1:

Collegare l'antenna al connettore a vite avvitandola in senso orario.

Fissata al connettore, posizionare l'antenna in verticale per assicurare una ricezione ottimale.



Step 2:

Inserire la propria scheda CardBus (16bit o 32bit) o collegare la scheda modem USB 3G al relativo connettore sul router.



Nota: Il router Wireless 3G è progettato per funzionare sia con schede modem UMTS, EVO che HSDPA 3G. Contattare il proprio ISP per ulteriori dettagli.

Se si possiede anche un modem ADSL o Cable-modem, connetterlo alla porta WAN.

Step 3:

Inserire il cavo Ethernet alla porta LAN nel pannello posteriore del router e ad una porta di rete del computer che si vuole utilizzare per configurare il router.



Nota: A configurazione completata, è possibile connettere il router ad uno switch per condividere con più utenti la connessione internet, Raccogliamo l'uso di switch LevelOne come il modello FSW-0511.

Step 4:

Collegare l'alimentatore

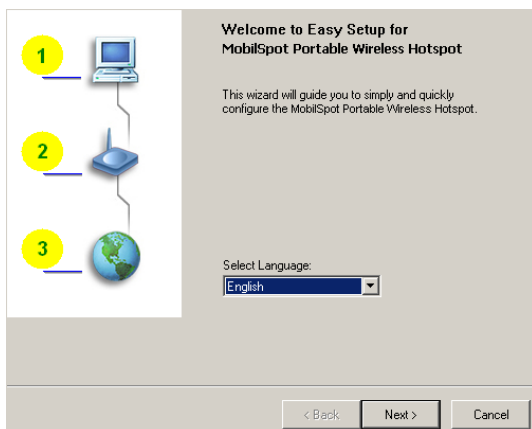


- a. Il LED power si accenderà per indicare la presenza di corrente..
- b. Gli altri LEDs presenti lampeggeranno per informare sull'inizializzazione del processo di connessione.
- c. Al termine dell'avvio I LEDs 3G,WAN, LAN e WLAN saranno illuminati.

Step 5: Utilizzo dell'utility di configurazione

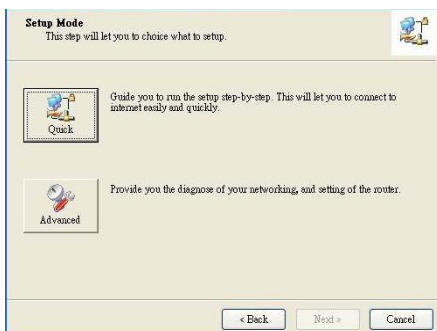
1. Installare il software Easy Setup Utility dal CD. Successivamente l'installazione è possibile avviarlo dal menu Start.
2. Configurare le impostazioni seguendo I seguenti passaggi:

Seleziona la lingua e premere "Next."

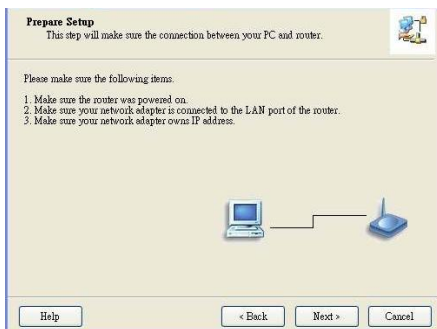


3. È possibile selezionare Quick Mode per avviare la configurazione passo-passo o utilizzare la Advanced Mode per l'accesso alla configurazione del router.

Nota: Fare riferimento al manuale utente per avere informazioni più dettagliate.



4. Controllare che sia tutto completato prima di procedere.



5. Inserire le impostazioni wireless.

Wireless Setting
This step will setup your basic wireless network information.

Please assign the parameters for your wireless network. If you need more settings, please login to the router's web page to setup. You can open the default web browser at <http://192.168.1.23.254> to configure advanced settings of the router.

Wireless:

SSID:

Channel:


Security:

Do not set at this time.

6. Autorilevamento servizio WAN

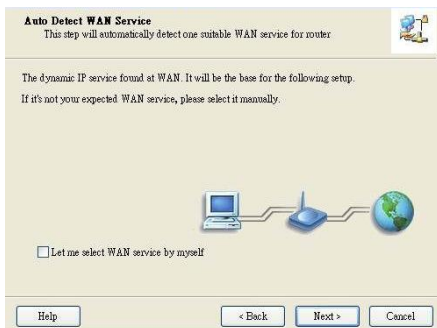
Auto Detect WAN Service
This step will automatically detect one suitable WAN service for router.

Please make sure the WAN cable connection is well between your router and broadband modem.
You can ignore the WAN cable connection, but the WAN service will not be checked later.
You can specify it by yourself if you know your WAN service type.

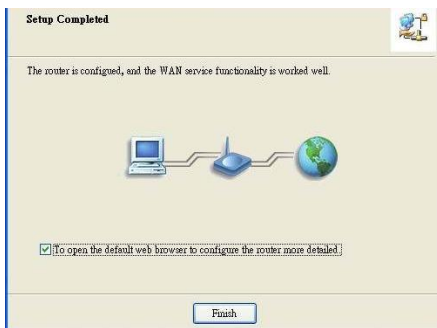


Let me select WAN service by myself

7. In questo caso, il tipo di DHCP WAN è rilevato



8. Easy Setup è completato.



9. Premere "Finish" per completare l'installazione.

Ελληνικά

Για την εγκατάσταση συνδέστε τη συσκευή στο τοπικό δίκτυο LAN.

Σημείωση: Μην συνδέσετε την συσκευή WBR-3800 3G Wireless Router στην τροφοδοσία ρεύματος εάν δεν ολοκληρωθούν τα παρακάτω βήματα.

Βήμα 1:

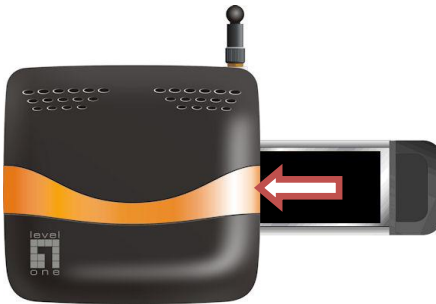
Βιδώστε την κεραία στην κατάλληλη θέση γυρίζοντας την δεξιόστροφα.

Όταν ολοκληρώσετε, γυρίστε την κεραία σε όρθια θέση.



Βήμα 2:

Εισάγετε την Type II 3G κάρτα (είτε αυτή είναι 16bit ή 32bit) ή την κάρτα USB 3G Modem στον δρομολογητή στην κατάλληλη θέση.



Note: Ο 3G Ασύρματος δρομολογητής είναι σχεδιασμένος να λειτουργεί σε δίκτυα UMTS ή EVDO και HSDPA 3G modems. Επικοινωνήστε με τον πάροχο για περισσότερες πληροφορίες.

Εάν έχετε ένα ADSL ή Cable Modem, συνδέστε το στην θύρα WAN.

Βήμα 3:

Εισάγετε το καλώδιο δικτύου στην θύρα LAN στο πίσω μέρος, και συνδέστε το και στην θύρα Ethernet του υπολογιστή σας, από τον οποίο θα ρυθμίσετε την συσκευή.



Σημείωση: Μετά την ολοκλήρωση της ρύθμισης μπορείτε να συνδέσετε το καλώδιο δικτύου σε μια θύρα LAN σε ένα Switch για να αποκτήσουν πρόσβαση στη σύνδεση Internet και οι υπόλοιποι υπολογιστές.

Συστήνουμε σαν παράδειγμα το προϊόν Level One FSW-0511 - 10/100Mbps 5 Port Switch.

Βήμα 4:

Συνδέστε την παροχή ρεύματος

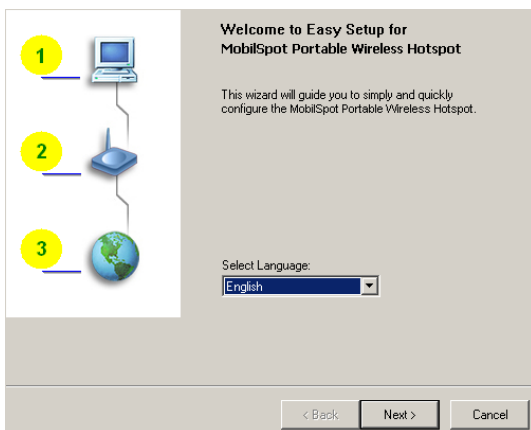


- a. Η λυχνία Power LED θα ανάψει σηματοδοτώντας την τροφοδοσία της συσκευής.
- b. Οι υπόλοιπες λυχνίες θα αναβοσβήνουν όσο η συσκευή κάνει τις απαραίτητες ρυθμίσεις και διαγνωστικούς ελέγχους.
- c. Όταν ολοκληρωθούν, οι παρακάτω λυχνίες θα ανάβουν πράσινο: 3G, WAN, LAN και WLAN.

Βήμα 5: Χρήση λογισμικού

1. Εγκαταστήστε το συνοδευτικό λογισμικό από το CD. Μετά την ολοκλήρωση της εγκατάστασης, μπορείτε να εκκινήσετε την εφαρμογή από το μενού έναρξης.
2. Ρυθμίστε το λογισμικό ακολουθώντας τα παρακάτω βήματα.

Επιλέξτε Γλώσσα, και πατήστε “Επόμενο.”

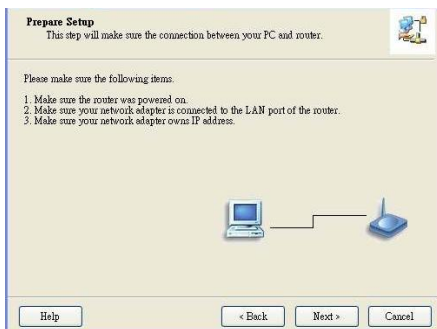


3. Μπορείτε να επιλέξετε την Γρήγορη Εγκατάσταση για να κάνετε τις ρυθμίσεις Βήμα-Βήμα, ή να επιλέξετε τις Προηγμένες Ρυθμίσεις για να αποκτήσετε πρόσβαση στο δρομολογητή μέσω της ιστοσελίδας του.

Σημείωση: Παρακαλώ δείτε τις οδηγίες χρήσης για περισσότερες πληροφορίες



4. Ελέγξτε όλα τα πεδία πριν συνεχίσετε.



5. Εισάγετε τις ρυθμίσεις ασύρματου δικτύου

Wireless Setting
This step will setup your basic wireless network information.

Please assign the parameters for your wireless network. If you need more settings, please login to the router's web page to setup. You can open the default web browser at <http://192.168.1.23.254> to configure advanced settings of the router.

Wireless:

SSID:

Channel:


Security:

Do not set at this time.

6. Αυτόματη ανίχνευση της υπηρεσίας WAN

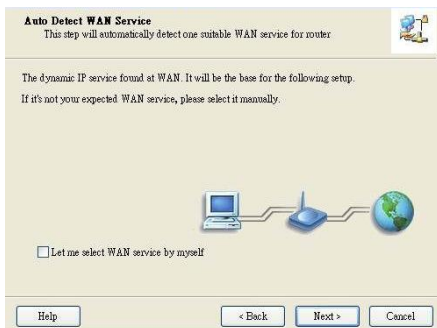
Auto Detect WAN Service
This step will automatically detect one suitable WAN service for router

Please make sure the WAN cable connection is well between your router and broadband modem.
You can ignore the WAN cable connection, but the WAN service will not be checked later.
You can specify it by yourself if you know your WAN service type.

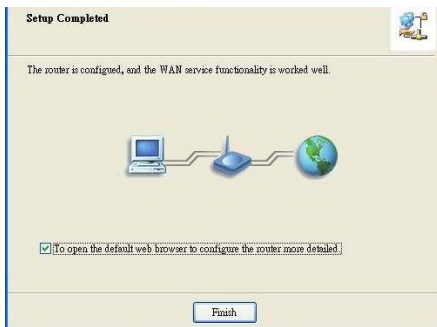


Let me select WAN service by myself

7. Εντοπίστηκε διακομιστής DHCP WAN



8. Ο οδηγός εγκατάστασης ολοκληρώθηκε.



9. Επιλέξτε " Τέλος" για την ολοκλήρωση της εγκατάστασης.

Português

Para iniciar a instalação conecte o Roteador Sem Fio 3G na sua rede LAN.

Nota: NÃO conecte o Roteador Sem Fio WBR-3800 3G na energia antes de executar os passos de instalação abaixo.

Passo 1:

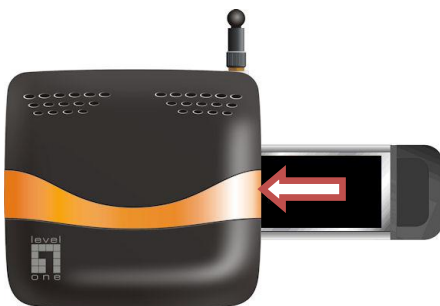
Conecte a antena girando na direção horária.

Ao ser presa, coloque a antena em uma posição ereta para assegurar a recepção ideal.



Passo 2:

Insira sua placa 3G Tipo II (ou de 16bit ou 32bit) ou conecte um modem USB 3G no roteador.



Nota: O Roteador Sem Fio 3G foi criado para funcionar com o UMTS ou EVDO e até os modems HSDPA 3G. Consulte sua operadora de serviço para obter informações detalhadas das funções.

Se usar um modem a cabo ou ADSL conecte o modem na porta WAN.

Passo 3:

Insira uma ponta do cabo Ethernet na porta LAN no painel traseiro e a outra na porta Ethernet disponível no computador que deseja usar para configurar a unidade.



Nota: Depois de concluir a configuração, pode-se conectar a porta LAN em um switch para compartilhar a conexão de internet na rede com fio.

Recomendamos FSW-0511 de LevelOne – switch de 5 portas 10/100 Mbps.

Passo 4:

Conecte o adaptador de alimentação

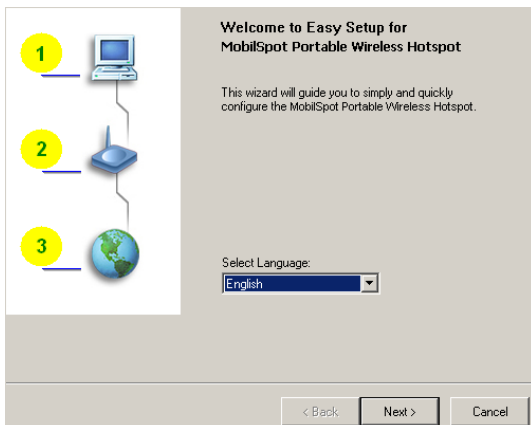


- a. O LED de alimentação irá ACENDER para indicar que a alimentação foi aplicada.
- b. Outros LEDs piscarão ACESO e APAGADO enquanto o roteador executa a inicialização e processo de conexão.
- c. Ao concluir o LED acenderá verde: 3G, WAN, LAN e WLAN.

Passo 5: Uso do utilitário de configuração fácil

1. Instale o utilitário de fácil configuração a partir do CD. Ao concluir a instalação pode executá-la do menu Iniciar.
2. Defina as configurações nos passos a seguir.

Selecione o idioma e clique em “Próximo”.

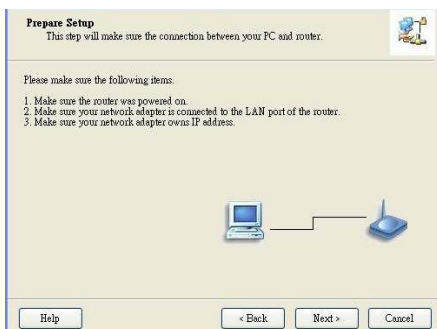


3. Pode selecionar o modo rápido para apresentar o assistente passo a passo ou usar o modo avançado para acessar a configuração baseada na página web do roteador.

Nota: Consulte o manual de usuário para as instruções de uso



4. Verifique se os itens estão completos antes de continuar.



5. Insira suas configurações da rede sem fio

Wireless Setting

This step will setup your basic wireless network information.

Please assign the parameters for your wireless network. If you need more settings, please login to the router's web page to setup. You can open the default web browser at <http://192.168.1.23.254> to configure advanced settings of the router.

Wireless:

SSID:

Channel:

Security:

Do not set at this time.

6. Serviço WAN de auto detecção


Auto Detect WAN Service

This step will automatically detect one suitable WAN service for router.

Please make sure the WAN cable connection is well between your router and broadband modem.

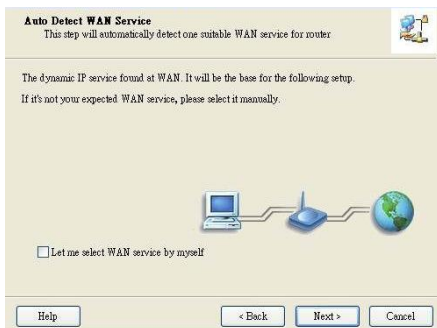
You can ignore the WAN cable connection, but the WAN service will not be checked later.

You can specify it by yourself if you know your WAN service type.

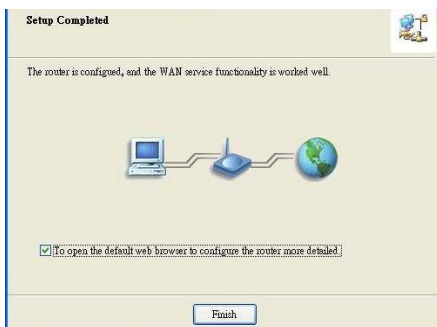


Let me select WAN service by myself

7. Neste caso, o tipo DHCP WAN é detectado



8. A configuração fácil foi concluída.



9. Clique em “Terminar” para concluir a instalação.

Svenska

Börja installationen med att koppla WBR-3800 3G WLAN routern till ditt LAN

OBS!! ANSLUT INTE nätdelen till WBR-3800 3G WLAN router innan följande steg är utförda.

Steg 1:

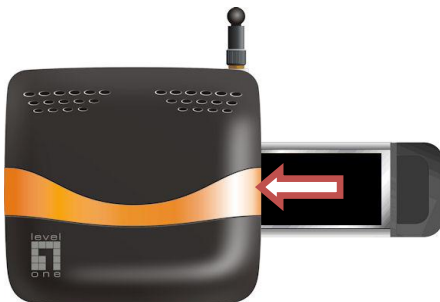
Fäst antennen genom att skruva den moturs.

Rikta den sedan uppåt för bästa mottagning



Steg 2:

Sätt in ditt Type II 3G kort (antingen 16 eller 32 bitars) eller koppla ett USB 3G modem till routern



OBS: 3G WLAN routern fungerar med antingen UMTS, EVDO och till och med med HSDPS 3G modem. Mer detaljerad information om möjligheter fås av din operatör

Har du också ett ADSL eller kabelmodem, anslut det till WAN porten

Steg 3:

Koppla en Ethernetkabel mellan LAN porten och den dator som ska användas vid konfigurering.



OBS: Kolla en switch till LAN porten om du vill dela Internetförbindelsen över LAN.

Vi rekommenderar LevelOne FSW-0511 – 10/100 Mbps 5 portars switch

Steg 4:

Anslut nätdelen

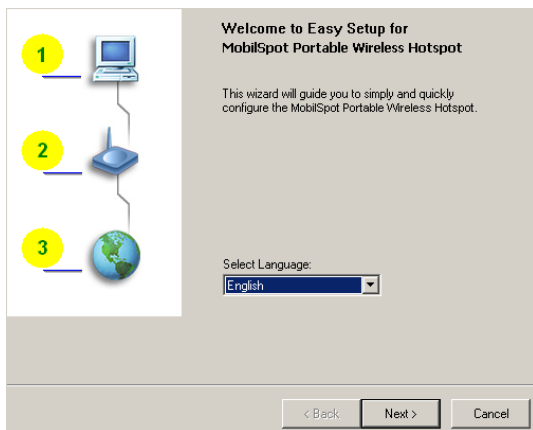


- a. Lysdioden 'Power' tänds när strömmen ansluts.
- b. Övriga lysdioder blinker under uppstart och anslutning.
- c. När det är klart ska följande lysa grönt: 3G, WAN, LAN och WLAN

Steg 5: Använda “Easy Setup Utility”

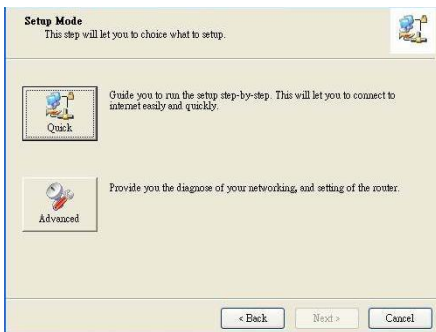
1. Installera “Easy Setup Utility” från CD skivan. Kör den sedan från Start menyn.
2. Gör inställningarna I följande steg.

Välj språk och klicka “Nästa”

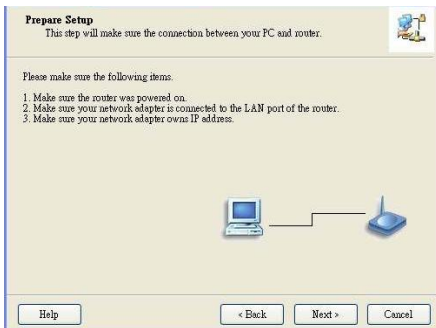


3. Du kan välja "Quick Mode" och köra en steg för steg 'Wizard' eller "Advanced Mode" för att komma åt routerns Webbgränssnitt.

OBS: Se "User Manual" för kompletta instruktioner.



4. Kontrollera att alla inställningar är korrekta innan du fortsätter.



5. Fyll I dina WLAN inställningar

Wireless Setting

This step will setup your basic wireless network information.

Please assign the parameters for your wireless network. If you need more settings, please login to the router's web page to setup. You can open the default web browser at <http://192.168.1.23.254> to configure advanced settings of the router.

Wireless:

SSID:

Channel:

Security:


Do not set at this time.

6. Automatisk WAN detektering

Auto Detect WAN Service

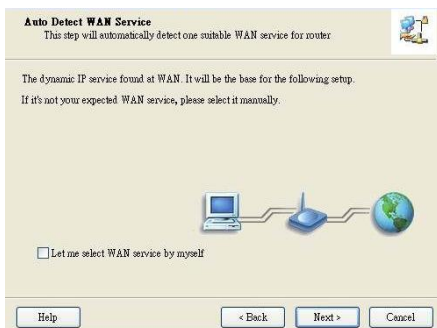
This step will automatically detect one suitable WAN service for router

Please make sure the WAN cable connection is well between your router and broadband modem.
You can ignore the WAN cable connection, but the WAN service will not be checked later.
You can specify it by yourself if you know your WAN service type.

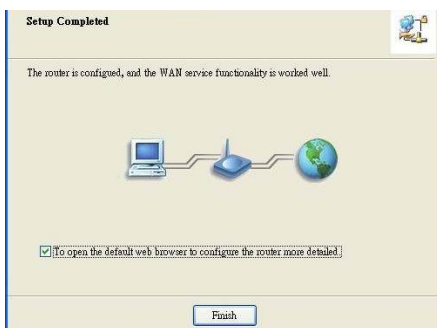


Let me select WAN service by myself

7. I detta fall detekteras DHCP på WAN sidan



8. "Easy Setup" är färdig



9. Klicka "Klar" för att avsluta installationen

Slovenščina

Za začetek instalacije povežite brezžični 3G usmerjevalnik v vaše omrežje.

Opozorilo: Vašega brezžičnega 3G usmerjevalnika NE SMETE priključiti v električno omrežje dokler ne izvedete vseh korakov instalacije opisanih spodaj.

Korak 1:

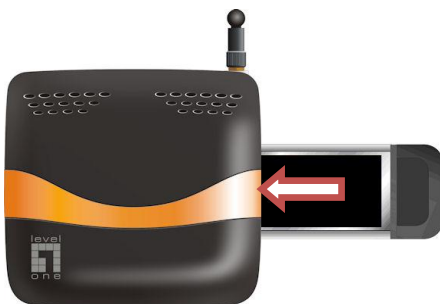
Privijte anteno v smeri urinega kazalca.

Ko je antena nameščena, jo usmerite v pokončni položaj, da zagotovite optimalen sprejem.



Korak 2:

Vstavite vašo Type II 3G kartico (16bitno ali 32bitno) ali priključite USB 3G modem v vaš usmerjevalnik.



Opozorilo: 3G brezžični usmerjevalnik je možno povezati z UMTS ali EVDO in celo HSDPA 3G modemi. Prosimo preverite pri vašem ponudniku internetnih storitev za podrobnejše informacije.

Če uporabljate tudi ADSL ali kablenski modem, povežite modem na WAN port usmerjevalnika.

Korak 3:

Priključite mrežni kabel v LAN port na zadnji strani in v mrežno kartico na vašem računalniku, preko katerega želite nastaviti usmerjevalnik.



Opozorilo: Po končani namestitvi boste morda želeli LAN port povezati s stikalom za skupno rabo interneta v žičnem omrežju.

Priporočamo 5-portno stikalo Level One FSW-0511 -10/100Mbps.

Korak 4:

Priključite napajalno enoto

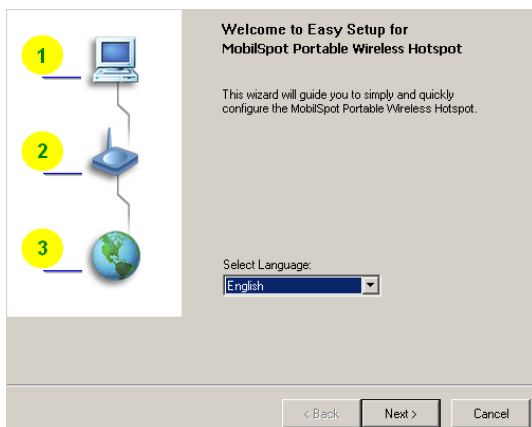


- a. Signalna LED "power" lučka se bo prižgala, ko boste napajalno enoto priključili v električno omrežje.
- b. Ostale signalne LED lučke bodo utripale dokler ne bo usmerjevalnik končal proces povezave.
- c. Po končanem procesu povezave bodo signalne LED lučke pri 3G, WAN, LAN in WLAN svetile zeleno.

Korak 5: Uporaba programa Hitri zagon

1. Zaženite “Easy Setup Utility” na CD-ROM-u. Po končani instalaciji, program lahko zaženete v meniju Start.
2. Določite nastavitve z naslednjimi koraki.

Izberite jezik(language), nato kliknite “Next”.

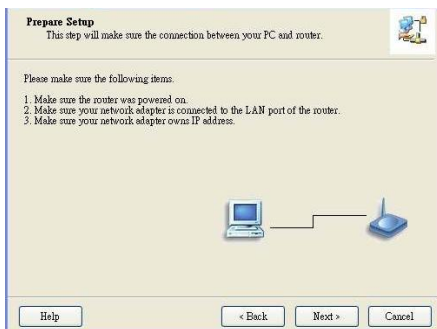


3. Za nastavitve usmerjevalnika lahko izberete *Hitri način(Quick)* z uporabo Čarovnika za namestitvev ali pa *Napredni način (Advanced)* z uporabo spletnega brskalnika.

Opozorilo: Prosimo oglejte si Navodila za uporabo za dodatne informacije.



4. Preden nadaljujete z “Next”, preverite če so spodnje točke izpolnjene.



5. Vnesite podatke za brezžično omrežje.

Wireless Setting
This step will setup your basic wireless network information.

Please assign the parameters for your wireless network. If you need more settings, please login to the router's web page to setup. You can open the default web browser at <http://192.168.1.23.254> to configure advanced settings of the router.

Wireless:

SSID:

Channel:


Security:

Do not set at this time.

6. Samodejna zaznava WAN storitve

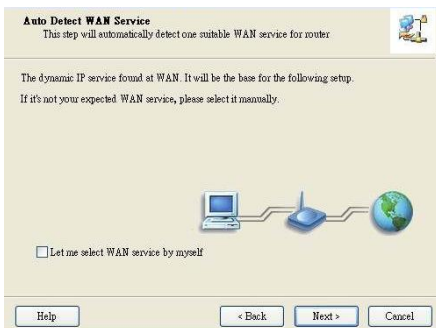
Auto Detect WAN Service
This step will automatically detect one suitable WAN service for router.

Please make sure the WAN cable connection is well between your router and broadband modem.
You can ignore the WAN cable connection, but the WAN service will not be checked later.
You can specify it by yourself if you know your WAN service type.

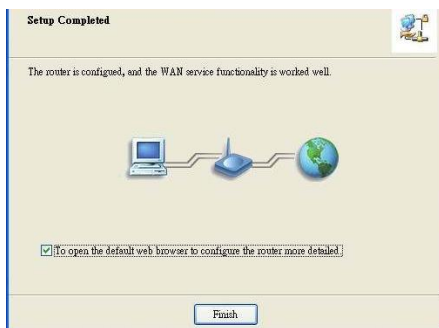


Let me select WAN service by myself

7. V tem primeru je bila zaznana DHCP WAN povezava.



8. "Easy Setup" je dokončan.



9. Kliknite "Finish" za zaključek instalacije.

繁體中文

開始安裝時，連結 3G 無線路由器至你的區域網路。

注意: 在執行安裝以下的措施之前，不能連接 WBR-3800 3G 無線路由器插上電源。

步驟一：

請依順時鐘方向安裝產品天線，如圖所標示的位置
請自行調整天線方向至訊號最好之位置。



步驟二：

請插入 PCMCIA 或 USB 3G 無線網卡至本機 PCMCIA 或 USB 卓。



注意：3G無線路由器被使用於 UMTS 或 EVDO 和甚至 HSDPA 的 3G 數據機。詳細的特徵訊息請參考你的服務提供商。

如有 ADSL 數據機，可把數據機插入 WAN 卓。

步驟三：

爲了設定本機可將網路線的一頭插入本機的 LAN 埠另一頭插入電腦的網路。



注意：再設定完成之後，你可將交換器或集線器連結至本機 LAN 埠。

當如果有多台電腦要同時使用有線方式上網時，可將集線器或交換器連結至本機的 LAN 埠，已擴充同時上網人數埠。

步驟四：

連結電源變壓器至本機.

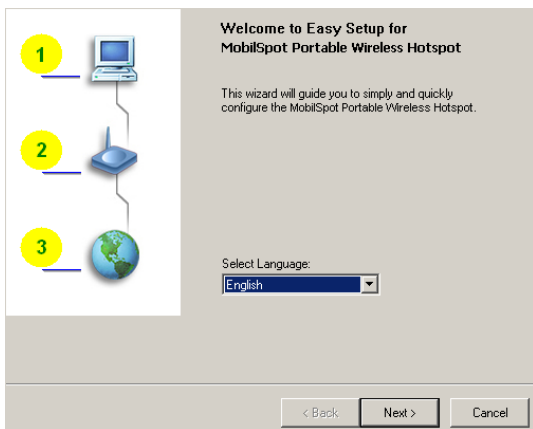


- a. 電源指示燈打開表示電源已經被使用.
- b. 當路由器進行開機和連結過程時，其他指示燈將會閃爍.
- c. 當開機完成後，3G、WAN、LAN and WLAN 的指示燈就會亮.

步驟五：

使用快速設定程式。

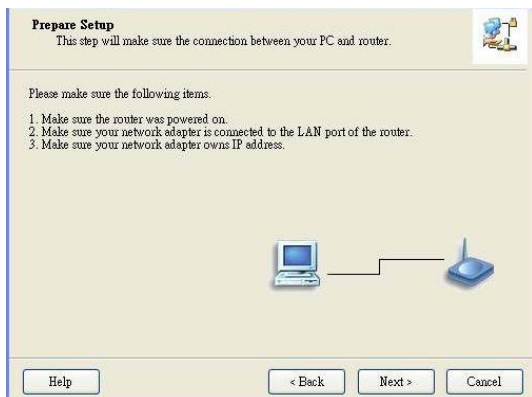
1. 從 CD 中安裝快速設定程式。在安裝完之後，你可以從電腦的開始選單中啓動。
2. 先選擇語言再按下一步



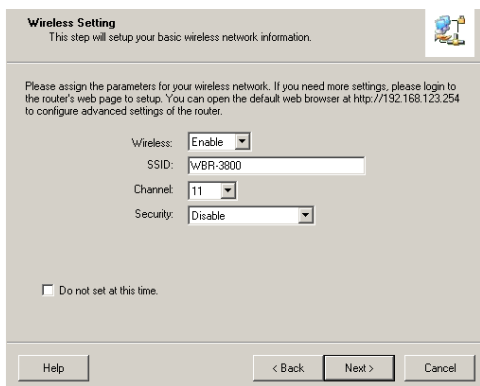
3. 你可以選擇快速安裝精靈模式或進階模式進行安裝。詳細操作說明請參照使用手冊。



4. 安裝程序之前請確認以下項目是完成的。



5. 進入你要的無線網路設定



Wireless Setting
This step will setup your basic wireless network information.

Please assign the parameters for your wireless network. If you need more settings, please login to the router's web page to setup. You can open the default web browser at <http://192.168.123.254> to configure advanced settings of the router.

Wireless:

SSID:

Channel:

Security:

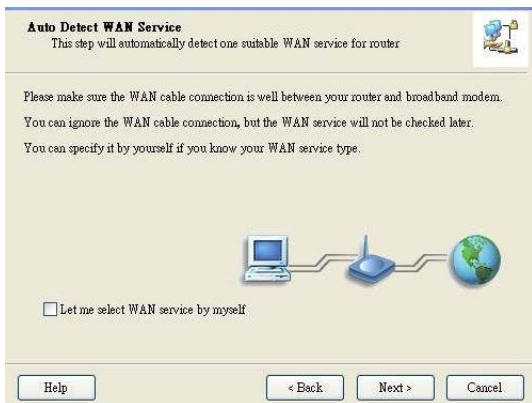
Do not set at this time.

Help < Back Next > Cancel

SSID：預設值為 WBR-3800，可自行變更可方便辨識之名稱


Security：預設值為 Disable，可自行選擇想要加密的模式

6. 自動感應 WAN 功能



Auto Detect WAN Service
This step will automatically detect one suitable WAN service for router.

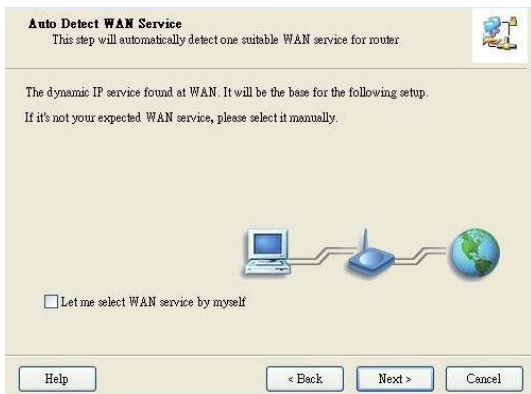
Please make sure the WAN cable connection is well between your router and broadband modem.
You can ignore the WAN cable connection, but the WAN service will not be checked later.
You can specify it by yourself if you know your WAN service type.



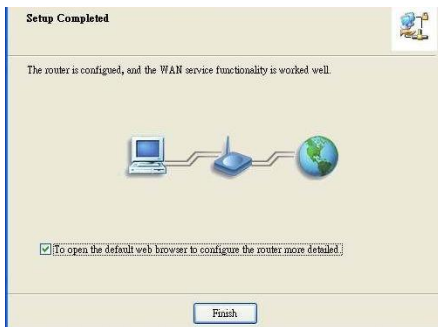
Let me select WAN service by myself

Help < Back Next > Cancel

7. 在這個例子上，DHCP WAN 類型將被感應



8. 快速安裝已完成



9. 點選完成即可完成安裝

한국어

설치를 시작하려면 3G 무선 공유기를 LAN 네트워크에 연결하십시오.

참고: 다음 설치 단계를 진행하기 전에 WBR-3800 3G 무선 공유기를 전원에 연결하지 마십시오.

1 단계:

안테나를 시계 방향으로 돌려 부착하십시오.

단단하게 고정되면 최적의 신호 수신을 위해 안테나가 위를 향하도록 방향을 조정하십시오.



2 단계:

공유기에 Type II 3G 카드(16bit 또는 32bit)를 삽입하거나 USB 3G 모뎀을 연결하십시오.

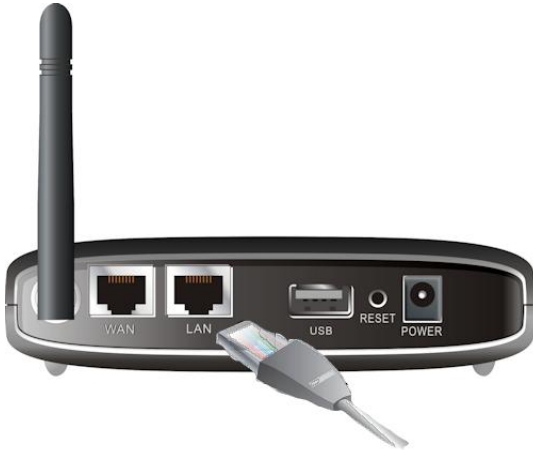


참고: 3G 무선 공유기는 UMTS 또는 EVDO 와 호환되며 HSDPA 3G 모뎀과도 호환됩니다. 자세한 기능 정보는 서비스 제공자에게 문의하십시오.

ADSL 또는 케이블 모뎀도 사용하는 경우에는 모뎀을 WAN 포트에 연결하십시오.

3 단계:

이더넷 케이블을 공유기 뒤 패널의 LAN 포트와 컴퓨터의 사용 가능한 이더넷 포트에 연결하십시오. 이 포트를 통해 컴퓨터에서 공유기를 구성하게 됩니다.



참고: 구성을 완료한 후 LAN 포트에 스위치를 연결하여 유선 네트워크와 인터넷 연결을 공유할 수 있습니다.

Level One 의 FSW-0511 - 10/100Mbps 5 포트 스위치를 권장합니다.

4 단계:

전원 어댑터를 연결하십시오.

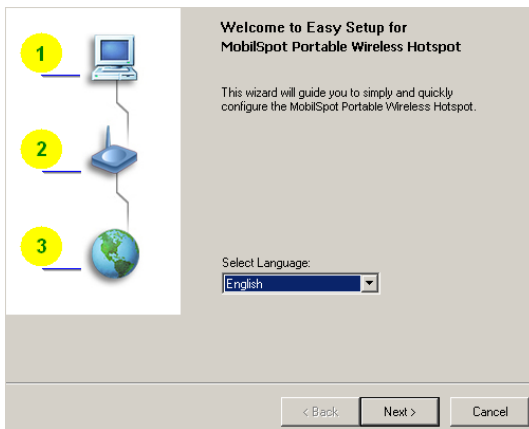


- a. 전원이 공급되면 전원 LED가 점등됩니다.
- b. 공유기가 초기화와 연결 작업을 진행하는 동안 다른 LED는 점멸합니다.
- c. 모든 작업이 완료되면 다음 LED가 녹색으로 점등됩니다: 3G, WAN, LAN 및 WLAN.

5 단계: 쉬운 설정 유틸리티 사용

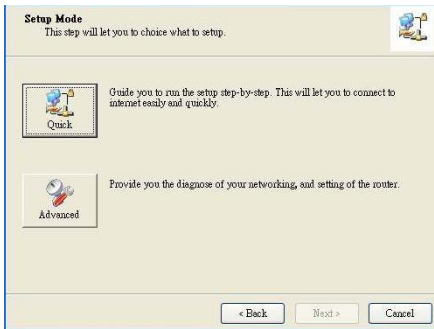
1. CD 에서 쉬운 설정 유틸리티를 설치하십시오.
설치가 완료되면 이 유틸리티를 시작 메뉴에서 실행할 수 있습니다.
2. 다음 단계에 따라 설정을 구성하십시오.

언어를 선택하고 “다음”을 클릭하십시오.

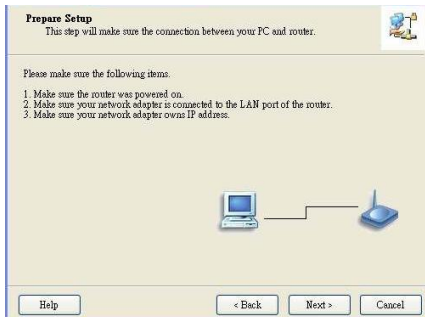


3. 빠른 모드를 선택하여 설정 마법사를 실행하거나, 고급 모드를 선택하여 공유기의 웹 기반 구성에 액세스할 수 있습니다.

참고: 사용 설명은 사용자 매뉴얼을 참조하십시오.



4. 다음 단계로 진행하기 전에 모든 항목이 준비되었는지 확인하십시오.



5. 무선 설정을 입력하십시오.

Wireless Setting
This step will setup your basic wireless network information.

Please assign the parameters for your wireless network. If you need more settings, please login to the router's web page to setup. You can open the default web browser at <http://192.168.1.23.254> to configure advanced settings of the router.

Wireless:

SSID:

Channel:


Security:

Do not set at this time.

6. WAN 서비스 자동 감지

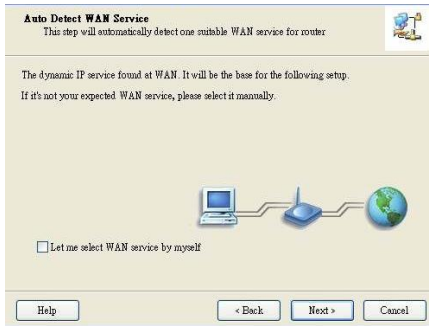
Auto Detect WAN Service
This step will automatically detect one suitable WAN service for router.

Please make sure the WAN cable connection is well between your router and broadband modem.
You can ignore the WAN cable connection, but the WAN service will not be checked later.
You can specify it by yourself if you know your WAN service type.

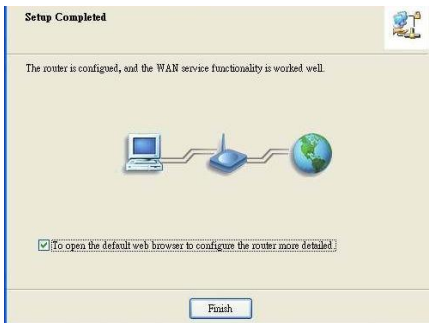


Let me select WAN service by myself

7. 이 예에서는 DHCP WAN 유형이 감지되었습니다.



8. 쉬운 설정이 완료되었습니다.



9. “마침”을 클릭하여 설치를 완료하십시오.

Русский

Для начала установки подключите беспроводной маршрутизатор WBR-3800 3G к сети LAN.

Примечание! НЕ подключайте беспроводной Маршрутизатор WBR-3800 3G к сети питания до выполнения следующих шагов по установке.

Шаг 1:

Прикрепите антенну, закрутив ее по часовой стрелке.

После фиксации установите антенну направлением вверх для обеспечения оптимального приема.



Шаг 2:

Вставьте карту 3G типа II (16 бит или 32 бит) или подключите USB-модем 3G к маршрутизатору WBR-3800.



Примечание! Беспроводной маршрутизатор WBR-3800 3G предназначен для работы с модемами UMTS или EVDO и даже HSDPA 3G. За дополнительной информацией обратитесь к сервис-провайдеру.

Если у вас также есть ADSL или кабельный модем, подключите его к порту WAN.

Шаг 3:

Вставьте кабель Ethernet в порт LAN на задней панели и подключите его к доступному порту Ethernet на компьютере, это подключение нужно для конфигурации устройства.



Примечание! После завершения конфигурации может понадобиться подключить порт LAN к коммутатору для обеспечения подключения Интернет по проводной сети нескольких устройств или компьютеров.

Рекомендуем коммутатор 1 уровня FSW-0511 - 5 портов 10/100 Мб/с.

Шаг 4:

Подключение адаптера питания

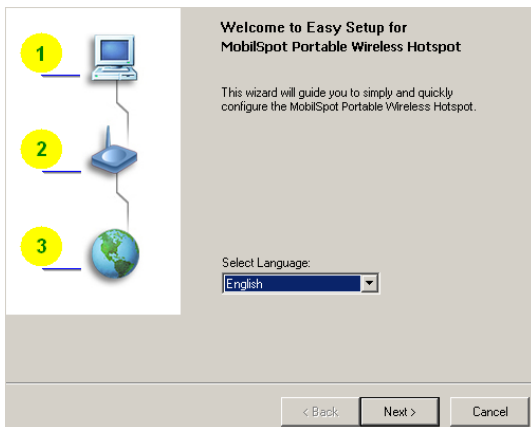


- a. Подключения адаптера питания обозначит включение LED (индикатора) означающего подачу напряжения питания на устройство.
- b. Другие LED (индикаторы) будут мигать (ON/OFF) при выполнении маршрутизатором инициализации и процесса подключения.
- c. После завершения LED (индикаторы): 3G, WAN, LAN и WLAN, будут гореть зеленым цветом.

Шаг 5: Использование утилиты Easy Setup Utility

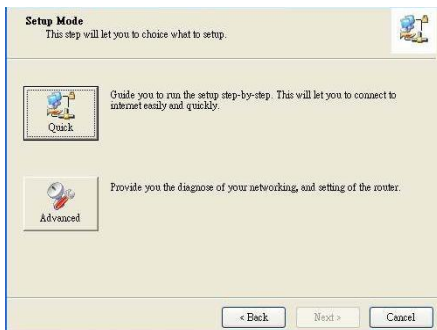
1. Установите Easy Setup Utility с CD, поставляемого в комплекте с устройством. После установки утилиты ее можно запустить из меню «Пуск»
2. Первоначальная настройка параметров.

Выберите язык и нажмите «Далее».

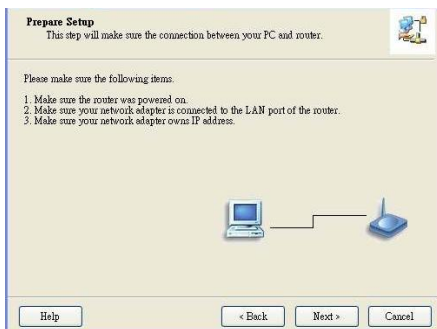


3. Можно выбрать быстрый режим для запуска мастера пошаговой установки или использовать расширенный режим для доступа к веб-конфигурации маршрутизатора.

Примечание! Для получения подробных инструкций см. Руководство пользователя



4. Перед продолжением проверьте следующие элементы.



5. Введите параметры беспроводной сети.

Wireless Setting
This step will setup your basic wireless network information.

Please assign the parameters for your wireless network. If you need more settings, please login to the router's web page to setup. You can open the default web browser at <http://192.168.1.23.254> to configure advanced settings of the router.

Wireless:

SSID:

Channel:


Security:

Do not set at this time.

6. Автоопределение типа подключения к WAN

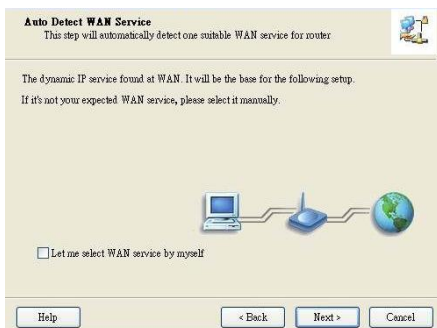
Auto Detect WAN Service
This step will automatically detect one suitable WAN service for router.

Please make sure the WAN cable connection is well between your router and broadband modem.
You can ignore the WAN cable connection, but the WAN service will not be checked later.
You can specify it by yourself if you know your WAN service type.

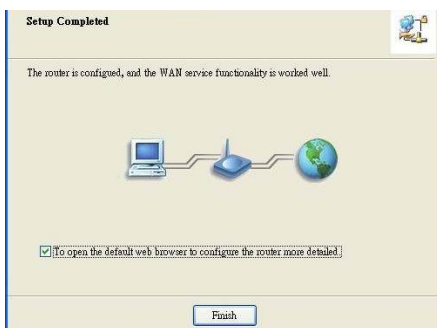


Let me select WAN service by myself

7. Выбор параметров использования DHCP



8. Установка Easy Setup завершена.



9. Для завершения установки нажмите на кнопку «Готово».

لبدء التركيب، وصل موجة البيانات اللاسلكي من الجيل الثالث 3G بشبكة البيانات المحلية LAN.

ملاحظة: لا توصل موجة البيانات اللاسلكي WBR-3800 بمصدر الطاقة قبل تنفيذ خطوات التركيب الموضحة أدناه.

الخطوة 1:

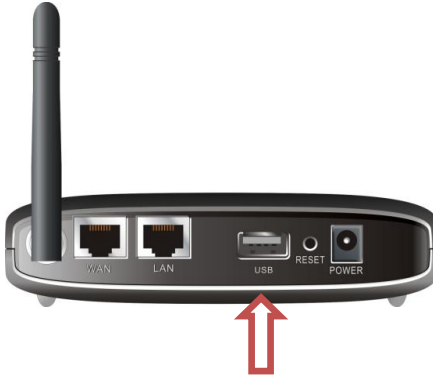
قم بتركيب الهوائي من خلال لفه في اتجاه عقارب الساعة.

بعد تركيبه بإحكام، ضع الهوائي في وضع عمودي لأعلى لضمان أفضل تغطية ممكنة.



الخطوة 2:

أدخل بطاقة الجيل الثالث Type II 3G (إما 16 بت أو 32 بت) في موجه البيانات أو وصل مودم USB 3G بالموجه.



ملاحظة: صمم موجه البيانات اللاسلكي للعمل مع تكنولوجيا النظام العالمي للاتصالات المحمولة UMTS أو تكنولوجيا EVDO أو حتى أجهزة المودم من الجيل الثالث المتوافقة مع تكنولوجيا التنزيل عالي السرعة HSDPA. يرجى الرجوع إلى مزود الخدمة لمعرفة معلومات تفصيلية عن المزايا.

إذا كانت لديك وصلة ADSL أو مودم كابل، قم بتوصيل المودم بمنفذ الشبكة واسعة النطاق WAN.

الخطوة 3:

أدخل كابل الإيثرنت في منفذ شبكة البيانات المحلية في LAN الجزء الخلفي ومنفذ الإيثرنت المتاح في الكمبيوتر الذي ترغب في استخدامه لضبط الجهاز.



ملاحظة: بعد اكتمال الضبط، قد ترغب في توصيل منفذ الشبكة المحلية بجهاز السويتش للاشتراك في وصلة الإنترنت عبر شبكة البيانات السلكية.

إننا نوصي باستخدام سويتش FSW-0511 من إنتاج شركة Level One المزود بخمسة منافذ بسرعة 100/10 ميجابت في الثانية.

الخطوة 4:

وصل محول الطاقة.

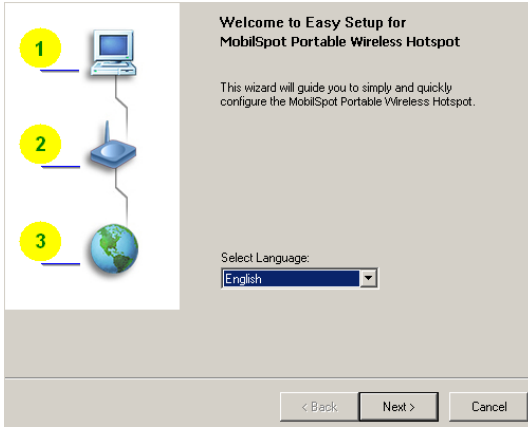


- a. سيضيء مصباح التشغيل (Power) لتوضيح مرور التيار الكهربائي.
- b. ستومض المصابيح الأخرى بين التشغيل (ON) والإيقاف (OFF) أثناء تنفيذ موجه البيانات لعملية بدء التشغيل والتوصيل.
- c. عند اكتمال التوصيل، ستضيء المصابيح التالية بالضوء الأخضر:
3G و WAN و LAN و WLAN.

الخطوة 5: استخدام دليل الإعداد السهل

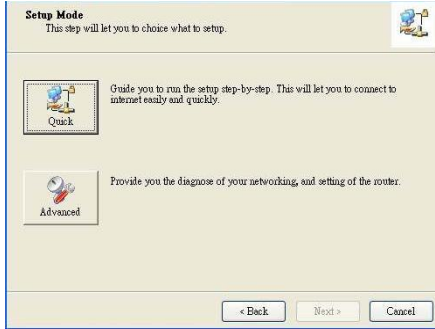
1. ثبت برنامج الإعداد السهل Easy Setup Utility من القرص المدمج.
بعد اكتمال تثبيت البرنامج يمكنك تشغيله من قائمة البدء Start Menu.
2. اضبط الإعدادات وفقا للخطوات التالية.

حدد اللغة ثم انقر على زر التالي (Next).

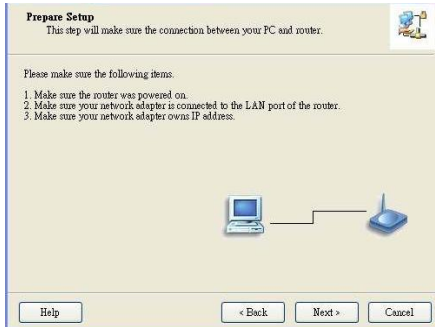


3. يمكنك تحديد الوضع السريع (Quick Mode) لتشغيل أداة الإرشاد "خطوة بخطوة" أو استخدام الوضع المتقدم (Advanced Mode) للوصول إلى ضبط موجه البيانات من الويب (Web Based Configuration).

ملاحظة: يرجى الرجوع إلى دليل المستخدم لمعرفة إرشادات الاستخدام.



4. راجع اكتمال الإعدادات قبل المتابعة.



5. أدخل إعدادات الشبكة اللاسلكية

Wireless Setting

This step will setup your basic wireless network information.

Please assign the parameters for your wireless network. If you need more settings, please login to the router's web page to setup. You can open the default web browser at <http://192.168.1.23.254> to configure advanced settings of the router.

Wireless:

SSID:

Channel:

Security:


Do not set at this time.

6. اعثر على الشبكة من خلال وظيفة الاكتشاف التلقائي

Auto Detect WAN Service

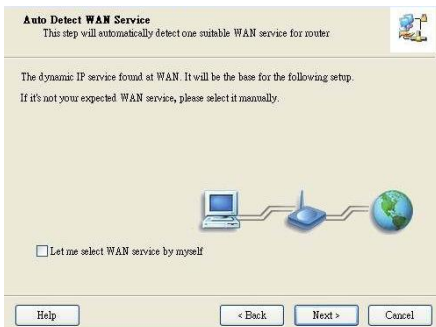
This step will automatically detect one suitable WAN service for router

Please make sure the WAN cable connection is well between your router and broadband modem.
You can ignore the WAN cable connection, but the WAN service will not be checked later.
You can specify it by yourself if you know your WAN service type.

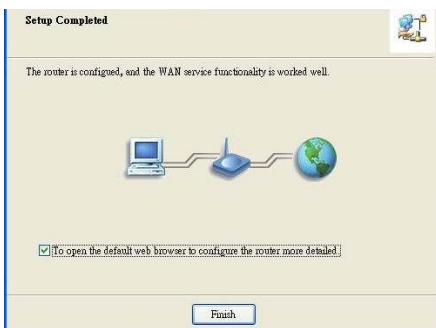


Let me select WAN service by myself

7. في هذه الحالة، يتم اكتشاف الشبكة تلقائياً DHCP WAN Type.



8. اكتمال تثبيت برنامج الإعداد السهل.



9. انقر على إنهاء (Finish) لإكمال التثبيت.