

# Quick Installation Guide

(WUA-1810 E)

**Digital Data Communications GmbH**

Hohe Straße 1, 44139 Dortmund, Germany

Email : [support@level1.com](mailto:support@level1.com)

# English

## Setup

---

### Step1: Connect to a Computer

1.1 Turn on your PC, insert USB WiFi Adapter to USB port of your PC



1.2 From the packaging CD into the computer



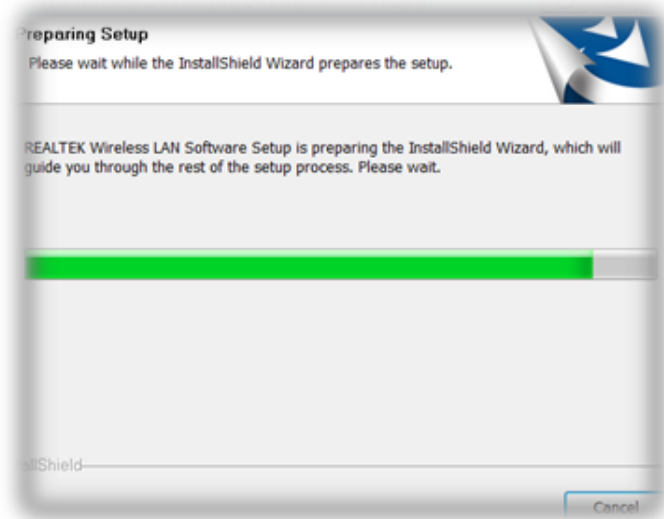
1.3 Open the folder to find Driver € windows and then click



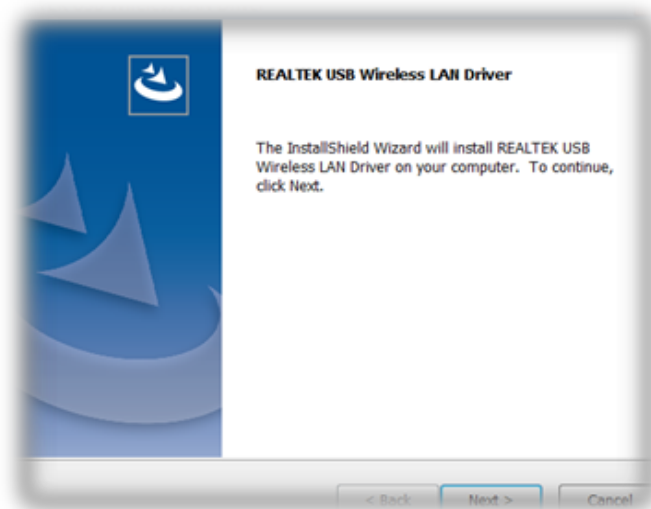
to start the installation.

## Step2: Driver software installation

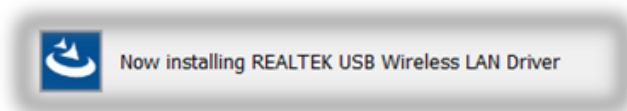
2.1 In the below interface, please wait, please do NOT click the “Cancel” button; otherwise, installation will stop



2.2 In the below interface, please click "Next" button to continue with the installation.



2.3 In the below interface, please wait



2.4 In the below interface, please wait



Now installing Cisco EAP-FAST

In the below interface, please select "Yes, I want to restart my computer now." and then click the "Finish" button to restart your computer.



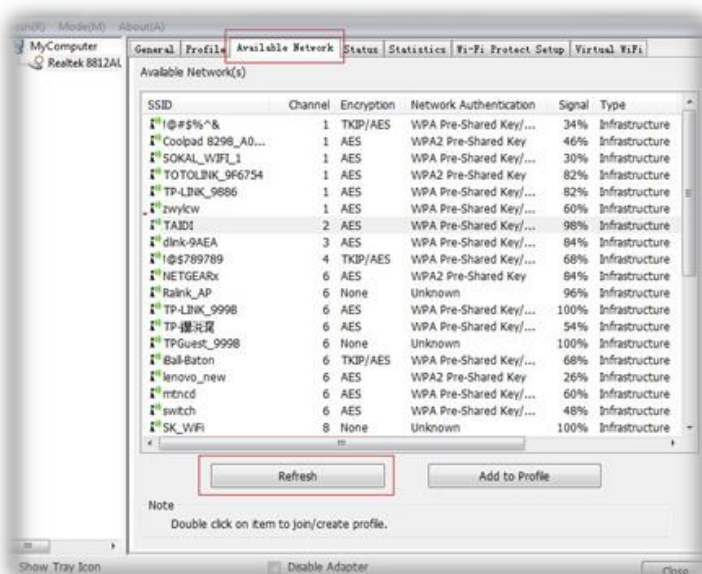
## 2.5 Complete installation

### Step3 : Wireless connection

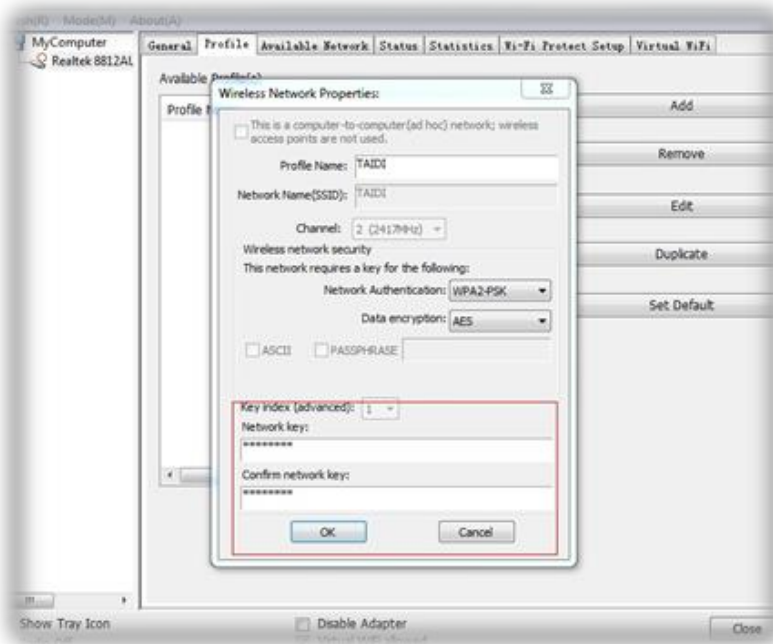


#### 3.1 Please open the installation application

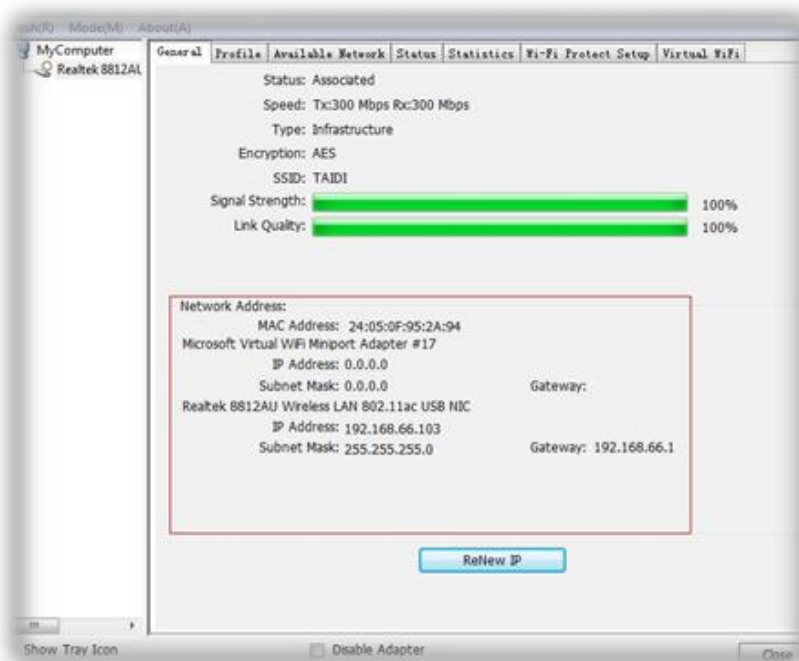
#### 3.2 Click Available Network



### 3.3 Select wireless input password to connect



### 3.4 View the information

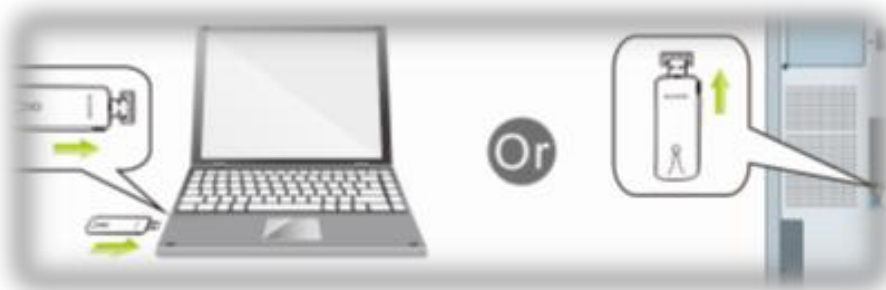


## Konfiguration

---

### Schritt 1: Mit einem Computer verbinden

- 1.1 PC einschalten, USB-WLAN-Adapter in den USB-Port Ihres PCs stecken



- 1.2 CD aus der Verpackung in den Computer einlegen



- 1.3 Ordner öffnen und nach Treiber > Windows suchen, dann

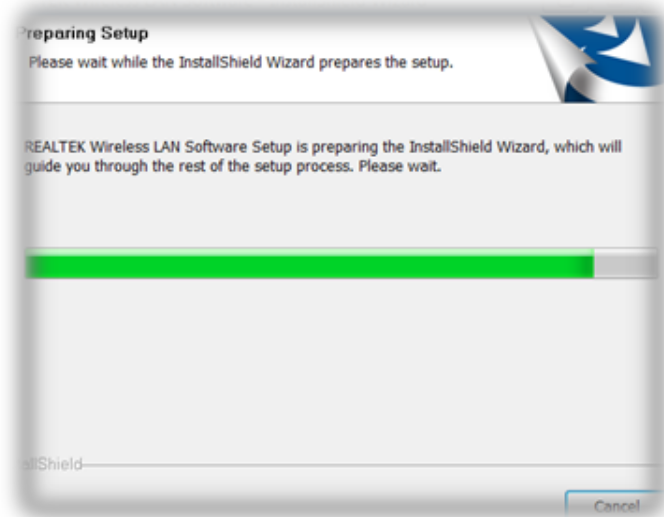


zum Starten der Installation anklicken

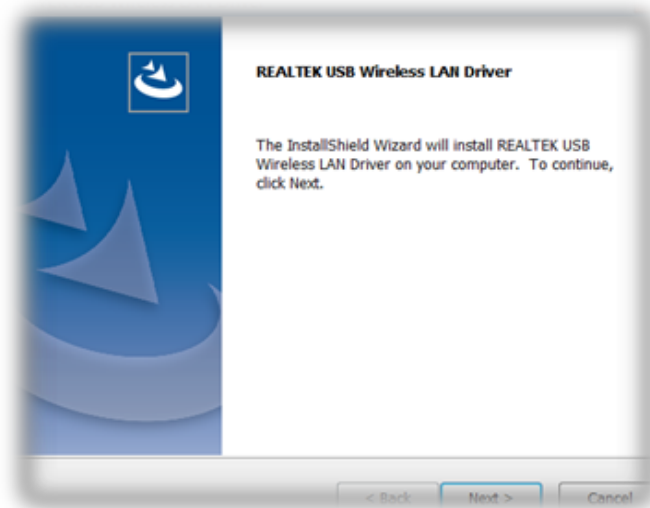
## Schritt 2: Treibersoftware installieren

2.1 Bitte warten Sie, wenn der nachstehende Bildschirm erscheint.

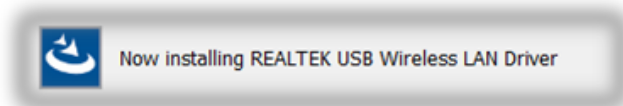
Klicken Sie nicht auf „Abbrechen“; andernfalls stoppt die Installation



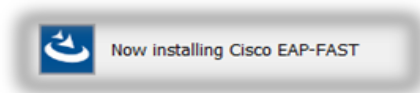
2.2 Klicken Sie am nachstehenden Bildschirm zum Fortsetzen der Installation auf „Weiter“.



2.3 Warten Sie, wenn der nachstehende Bildschirm erscheint



## 2.4 Warten Sie, wenn der nachstehende Bildschirm erscheint



Wählen Sie am nachstehenden Bildschirm „Ja, ich möchte meinen Computer jetzt neu starten“. Klicken Sie dann zum Neustarten Ihres Computers auf „Fertigstellen“.



## 2.5 Installation abschließen

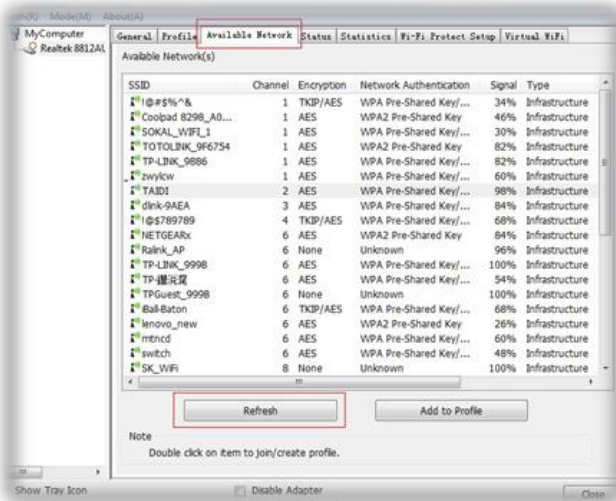


### Schritt 3: WLAN-Verbindung

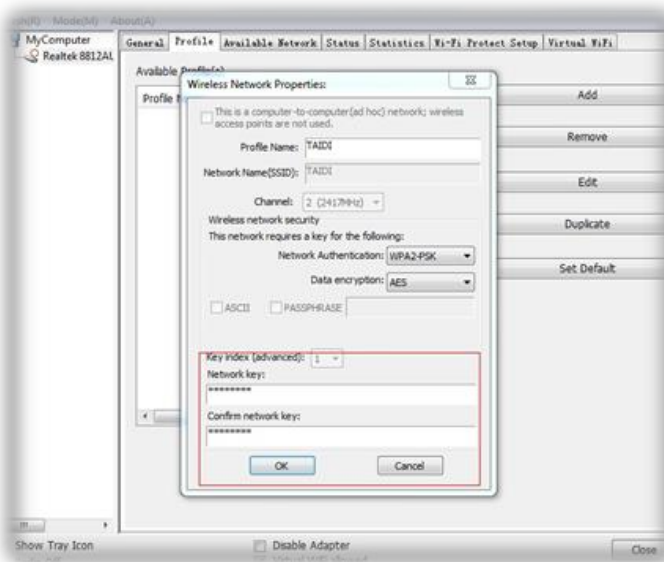
#### 3.1 Installationsanwendung öffnen

#### 3.2 Verfügbares Netzwerk anklicken

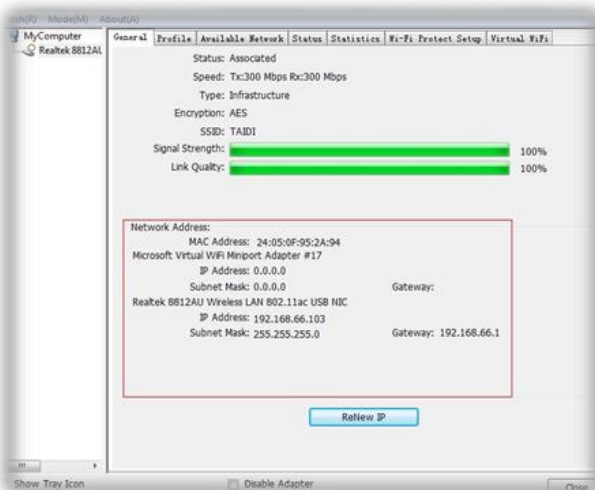




### 3.3 Zum Verbinden das WLAN-Eingabekennwort wählen



### 3.4 Informationen anzeigen



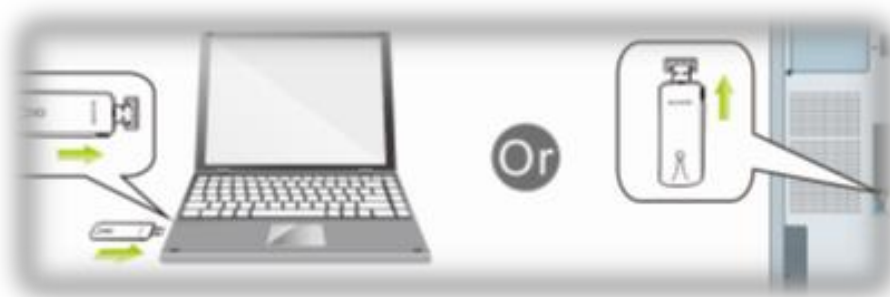
# Français

## Installation

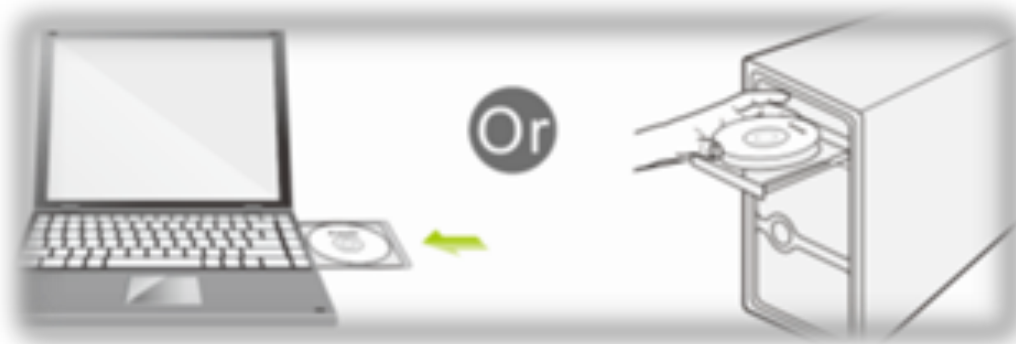
---

### Étape 1 : Connexion à un ordinateur

- 1.1 Allumez votre PC, insérez l'adaptateur USB Wi-Fi dans le port USB de votre PC



- 1.2 Depuis le CD de l'emballage jusqu'à l'ordinateur



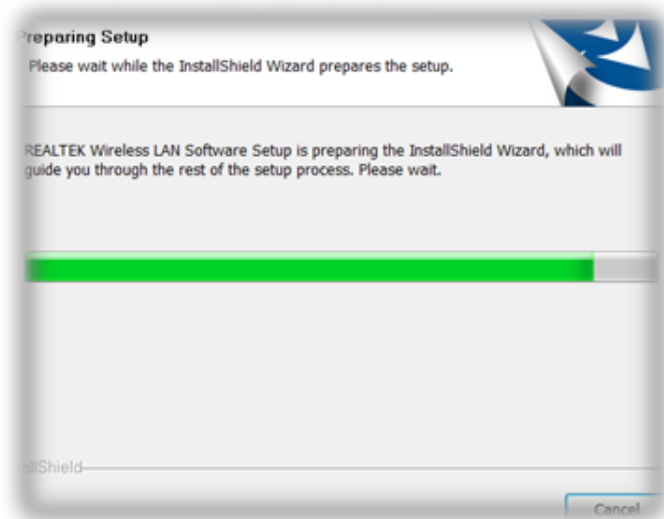
- 1.3 Ouvrez le dossier pour trouver Pilote --> Windows, puis cliquez



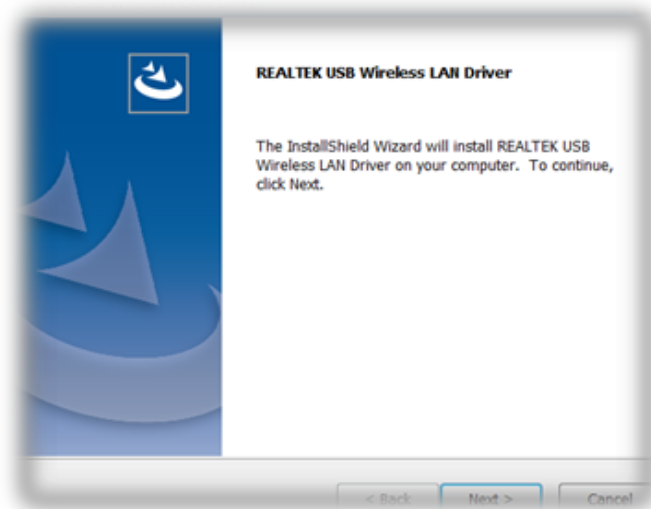
pour démarrer l'installation

## Étape 2 : Installation du logiciel pilote

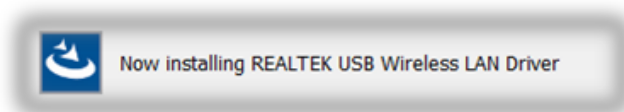
2.1 Dans l'interface ci-dessous, veuillez patienter, veuillez NE PAS cliquer sur le bouton « Annuler » ; dans le cas contraire, l'installation s'arrête.



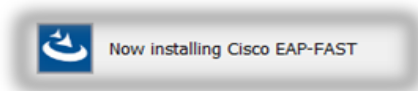
2.2 Dans l'interface ci-dessous, veuillez cliquer sur le bouton « Suivant » afin de poursuivre l'installation.



2.3 Dans l'interface ci-dessous, veuillez patienter.



## 2.4 Dans l'interface ci-dessous, veuillez patienter



Dans l'interface ci-dessous, veuillez sélectionner « Oui, je souhaite redémarrer mon ordinateur maintenant. », puis cliquez sur le bouton « Terminer » pour redémarrer votre ordinateur.



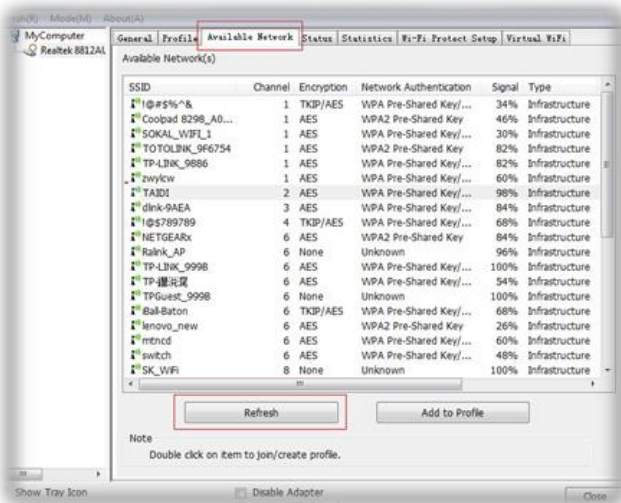
## 2.5 Terminez l'installation



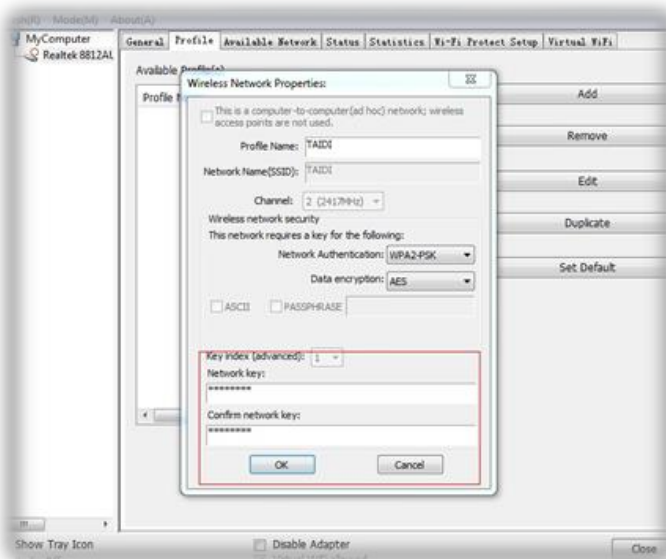
### Étape 3 : Connexion sans fil

3.1 Veuillez ouvrir l'application d'installation

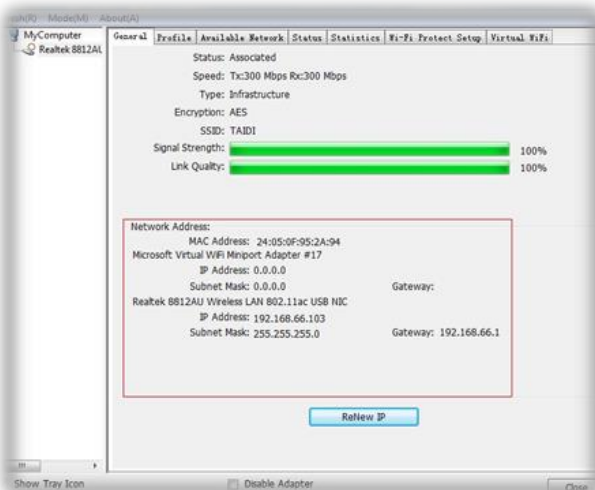
3.2 Cliquez sur Réseau disponible



3.3 Sélectionnez le mot de passe sans fil pour vous connecter.



3.4 Visualisez les informations.

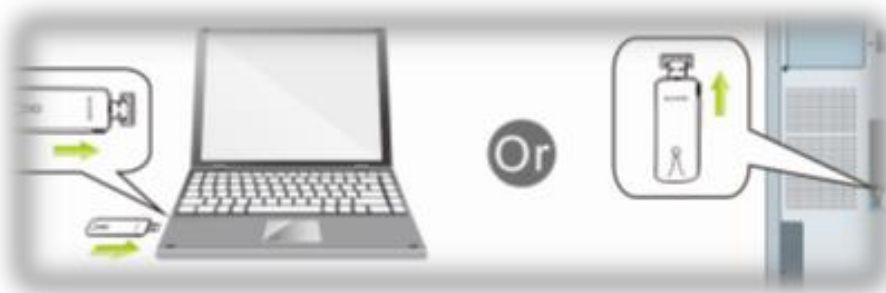


## Instalación

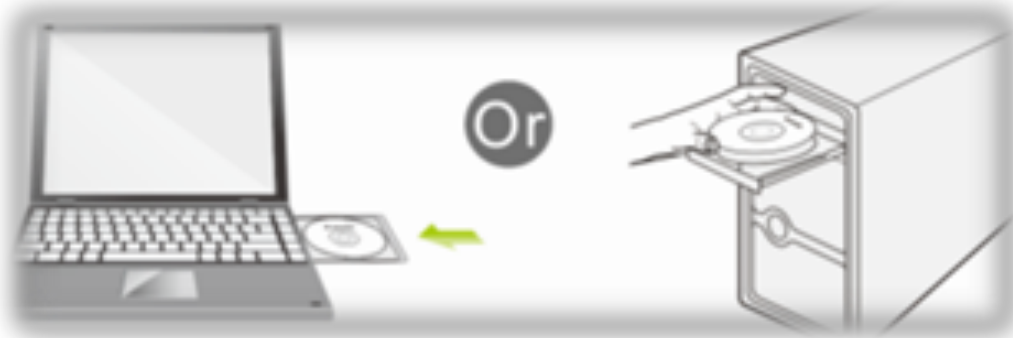
---


### Paso 1: Conectar a su ordenador

- 1.1 Encienda su PC, inserte el adaptador WiFi USB en el puerto USB de su PC.



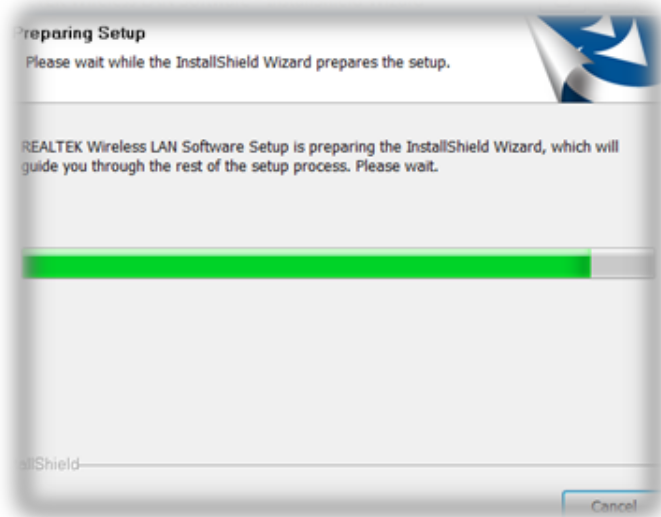
- 1.2 Inserte el CD del paquete en su ordenador.



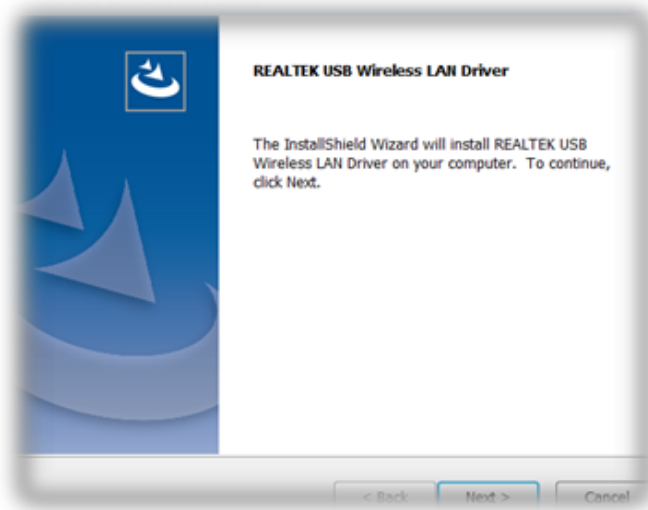
- 1.3 Abra la carpeta para buscar el controlador-->Windows y, a continuación, haga  clic para iniciar la instalación.

## Paso 2: Instalación del software del controlador

2.1 En la interfaz siguiente, espere. NO haga clic en el botón "Cancelar"; de lo contrario, la instalación se detendrá.



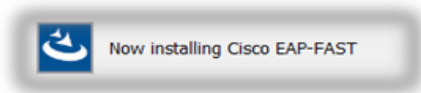
2.2 En la interfaz que figura más abajo, haga clic en el botón "Siguiente" para continuar con la instalación.



2.3 En la interfaz siguiente, espere.



2.4 En la interfaz siguiente, espere.



En la interfaz siguiente, seleccione "Sí, deseo reiniciar mi ordenador ahora." y haga clic en el botón "Finalizar" para reiniciar el equipo.



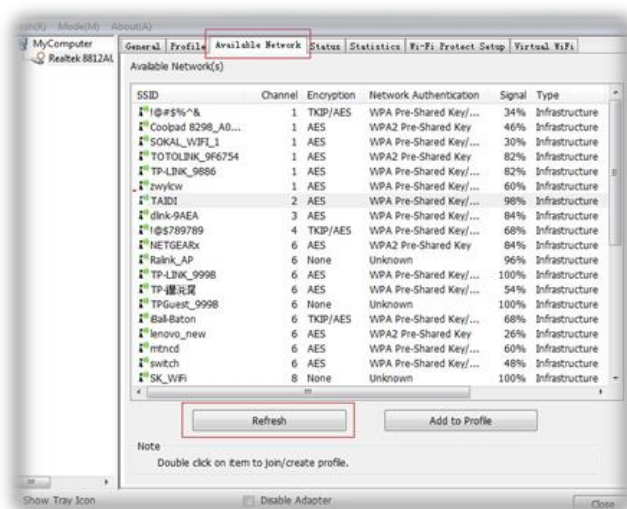
## 2.5 Completar la instalación



### Paso 3: Conexión inalámbrica

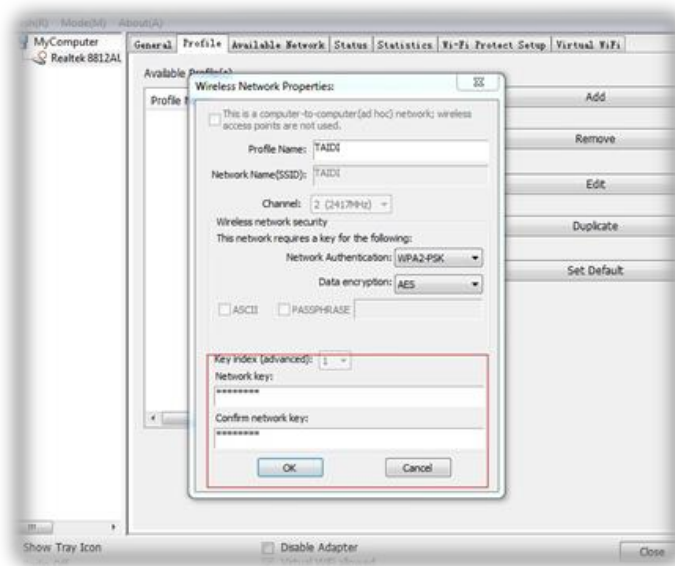
3.1 Abra la aplicación de la instalación.

3.2 Haga clic en Redes disponibles.

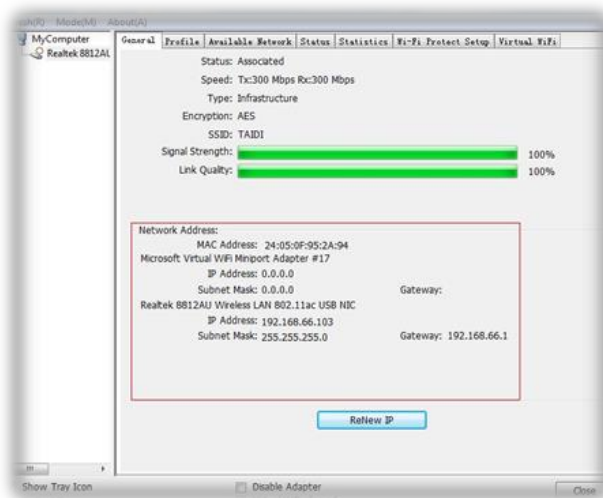




### 3.3 Seleccione la contraseña de entrada de la conexión inalámbrica para conectarse.



### 3.4 Vea la información.



# Português

## Instalação

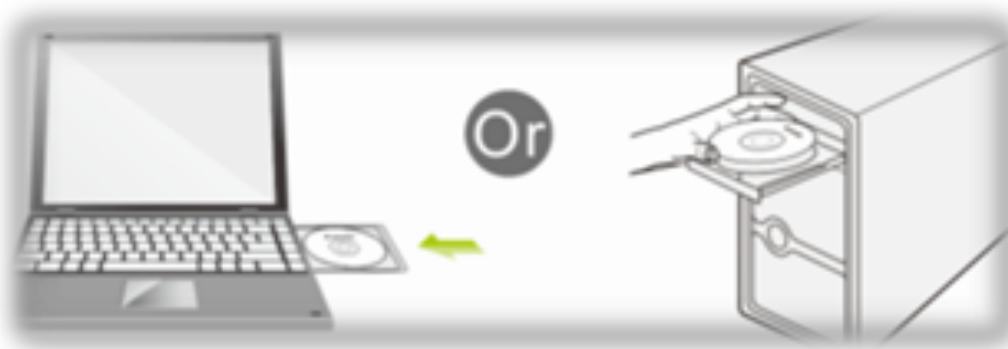
---


### Passo 1: Ligar a um computador

- 1.1 Ligue o seu PC, insira o Adaptador WiFi USB na porta USB do PC



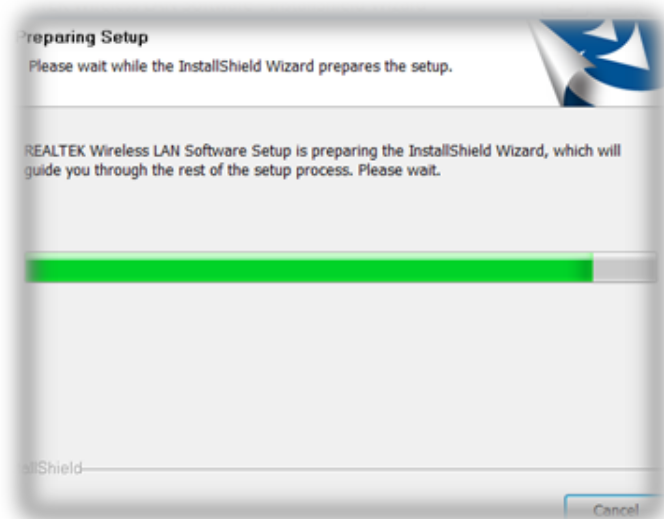
- 1.2 Insira o CD fornecido no computador



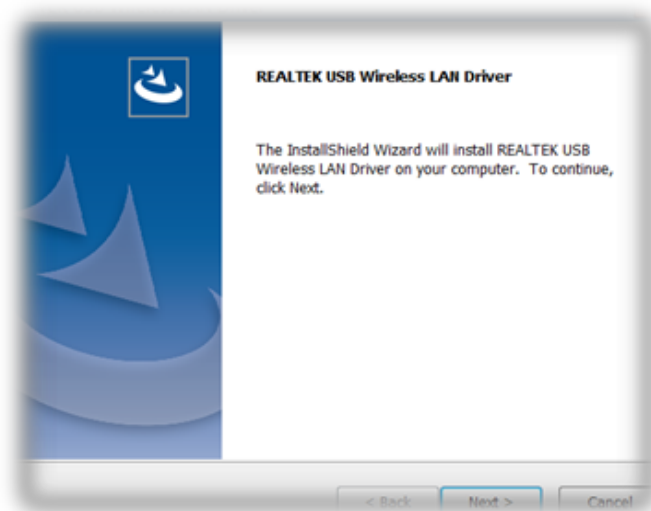
- 1.3 Abra a pasta para encontrar o Controlador --> Windows e clique  para iniciar a instalação.

### Passo 2: Instalação do software do controlador

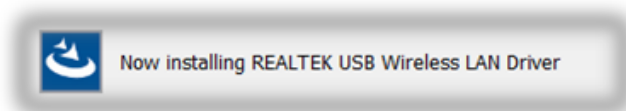
- 2.1 Na interface apresentada abaixo, aguarde, NÃO clique no botão "Cancelar", caso contrário, a instalação irá parar



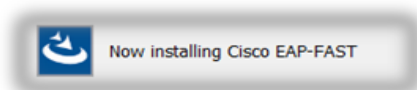
**2.2** Na interface apresentada abaixo, clique no botão "Seguinte" para continuar a instalação.



**2.3** Na interface apresentada abaixo, aguarde



**2.4** Na interface apresentada abaixo, aguarde



Na interface abaixo, selecione "Sim, desejo reiniciar o meu computador agora." e clique no botão "Concluir" para reiniciar o computador.



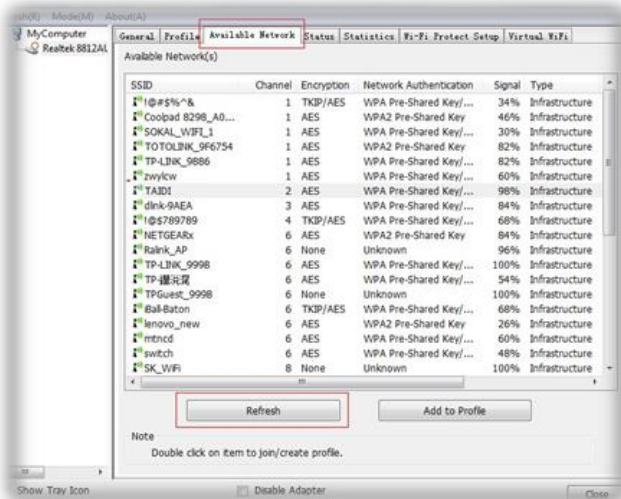
## 2.5 Instalação concluída



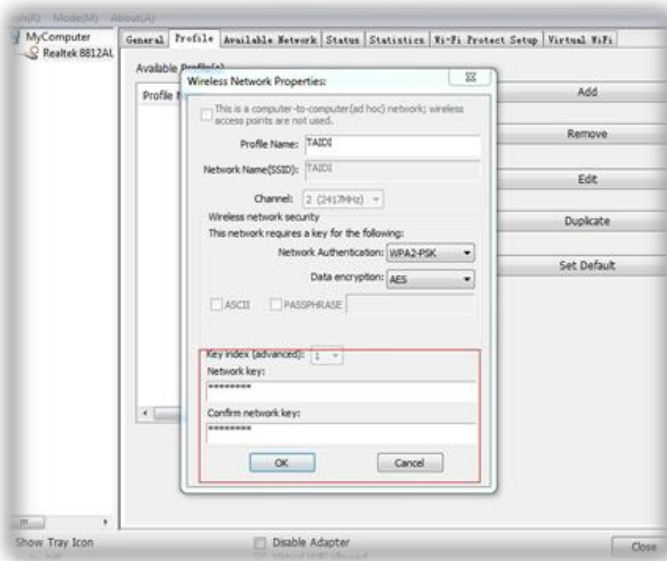
## Passo 3: Ligação sem fios

### 3.1 Abra a aplicação de instalação

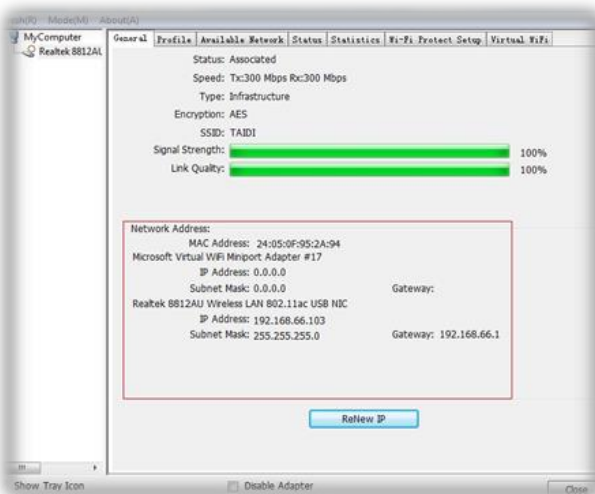
### 3.2 Clique em Redes disponíveis



### 3.3 Selecione a palavra-passe da rede sem fios para ligar.



### 3.4 Ver as informações.



## Installazione

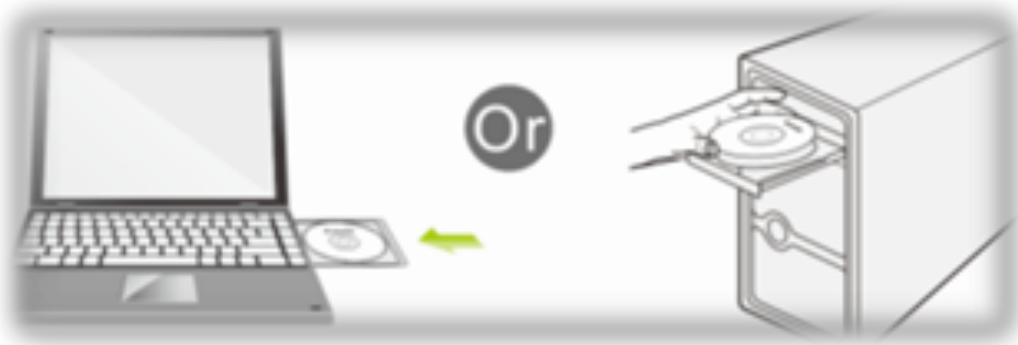
---

### Fase 1: Collegare ad un computer

1.1 Accendere il PC e inserire l'adattatore WiFi USB alla porta USB del PC



1.2 Dal CD al computer



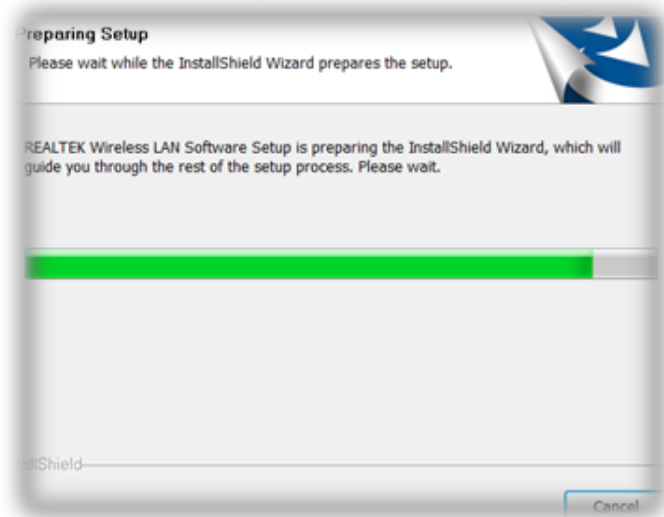
1.3 Aprire la cartella per trovare Driver -->Windows, quindi fare clic



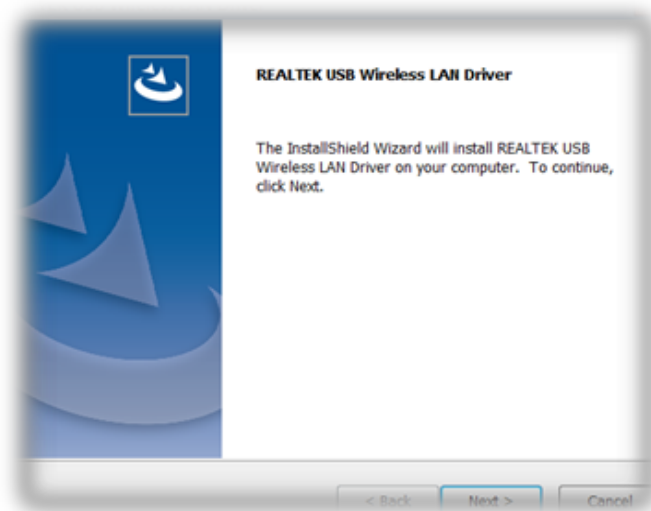
per avviare l'installazione

## Fase 2: Installazione del software del driver

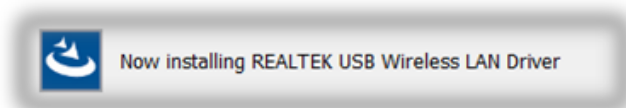
2.1 Nell'interfaccia inferiore, NON fare clic sul tasto "Annulla"; in caso contrario, l'installazione si arresta.



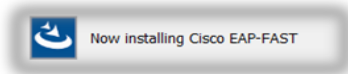
2.2 Nell'interfaccia inferiore, fare clic sul tasto "Avanti" per continuare con l'installazione.



2.3 Nell'interfaccia inferiore, attendere



## 2.4 Nell'interfaccia inferiore, attendere



Nell'interfaccia inferiore, selezionare "Sì, voglio riavviare il computer", quindi fare clic sul tasto "Fine" per riavviare il computer.



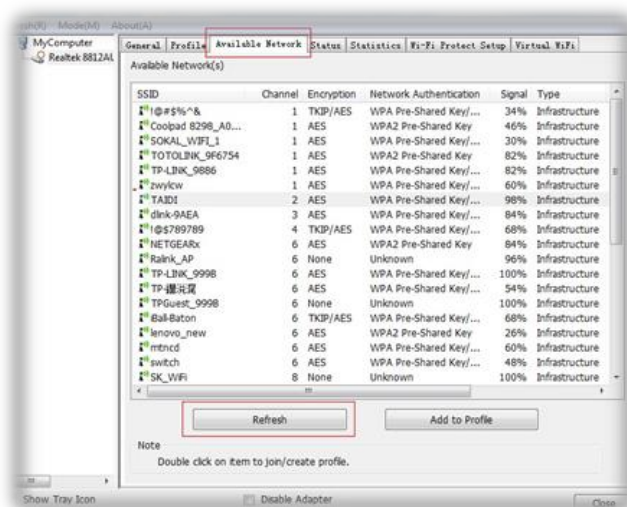
## 2.5 Completare l'installazione



## Fase 3 : Connessione wireless

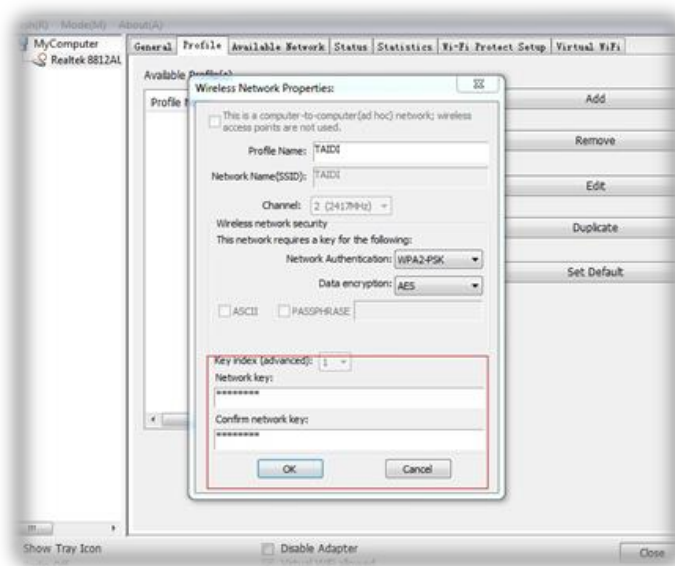
### 3.1 Aprire l'applicazione di installazione

### 3.2 Fare clic su Reti disponibili

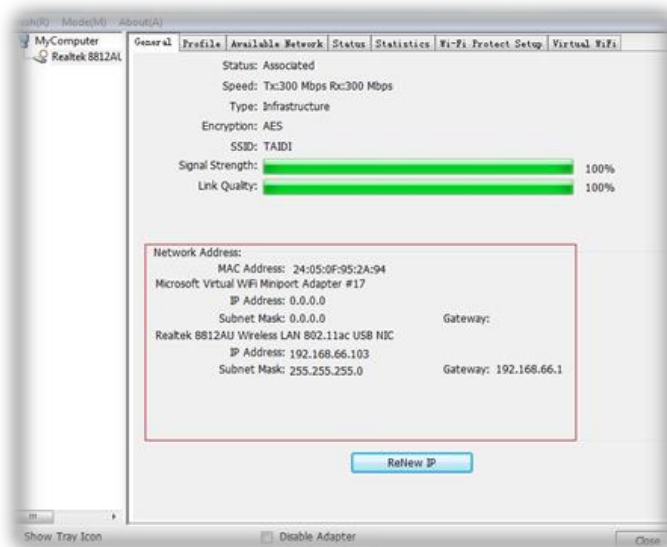




### 3.3 Selezionare la password di accesso wireless per connettersi



### 3.4 Visualizzare le informazioni





## **Compliance Statement**

CE marking is a certification mark that indicates conformity with health, safety, and environmental protection standards for products sold within the European Economic Area (EEA). The CE marking is also found on products sold outside the EEA that have been manufactured to EEA standards. This makes the CE marking recognizable worldwide even to people who are not familiar with the European Economic Area.



## **WEEE**

WEEE is waste electrical and electronic equipment. It is end-of-life electrical and electronic equipment and covers virtually everything with a plug or battery. ... The EC introduced the WEEE Directive in 2002 to address the environmental impacts of unwanted electrical and electronic equipment at end-of-life disposal.